

ROUTE NO.	SECTION	CITY	TOTAL SHEETS	SHEET NO.
FAU 7356	06-00007-00-RP	FORSYTH	25	7
FED. ROAD DIST. NO.	ILLINOIS	PROJECT	M-5189 (041)	

CONTRACT NUMBER 95564

CURVE DATA

C-2		C-3	
P.I. Sta. 104+39.73	$\Delta = 31^\circ 56' 14.8''$	P.I. Sta. 107+22.47	$\Delta = 32^\circ 41' 22.8''$
D = 110' 27' 33.0"	R = 500.00'	D = 110' 27' 33.0"	R = 500.00'
T = 143.07'	L = 278.70'	T = 147.10'	L = 286.14'
E = 20.068'	P.C. Sta. 102+96.65	E = 21.192'	P.C. Sta. 105+75.36
PTC Sta. 105+86.10		PTC Sta. 108+61.50	

REVISIONS

NO.	BY	DATE

BAINBRIDGE & ASSOCIATES, INC.
Consulting Engineers
1970 SOUTH TAYLOR ROAD
DECATUR ILLINOIS
164-07266

GEE MILANSKI
164-07266

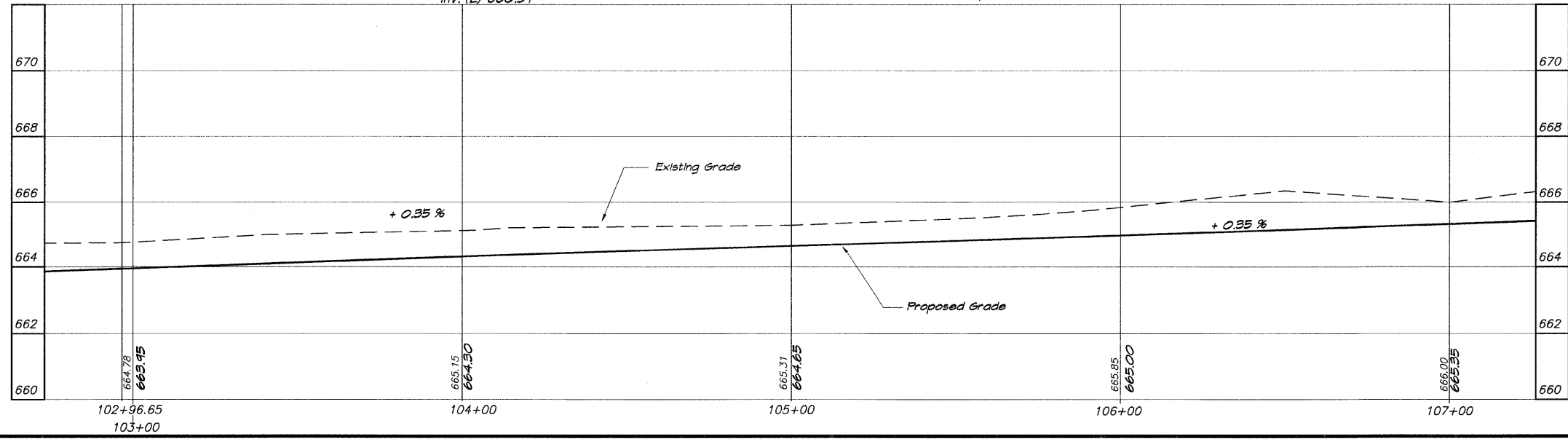
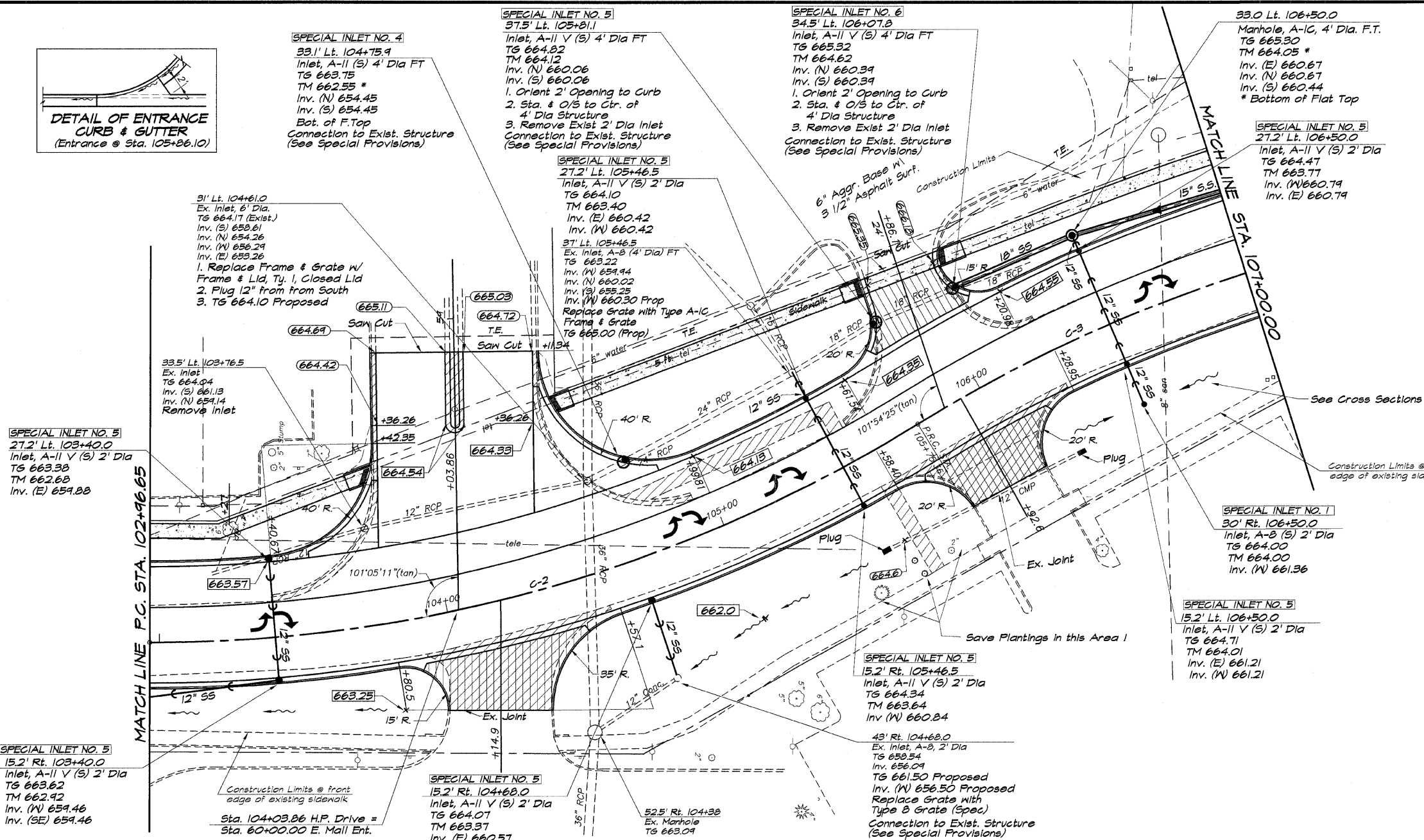
SCALE: HORIZ. 1" = 20'
VERT. 1" = 2'

DESIGNED: MAP
DRAWN: Les Jenkins
FIELD BOOK: 000-000

DATE: Oct. 2007
JOB NO.: 00-000

VILLAGE OF FORSYTH, ILLINOIS
HICKORY POINT DRIVE IMPROVEMENTS
ROADWAY PLAN AND PROFILE
STATION 102+96.65 TO 107+00.00

SHEET NO. **7**
OF 25



S:\V\2007\07-0708\MP\Plan_Village_of_Forsyth_Sheet7.dwg (2/16/2008 9:54:18 AM)