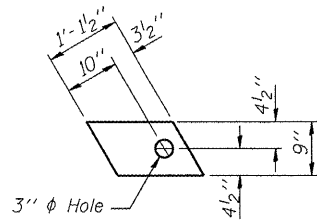


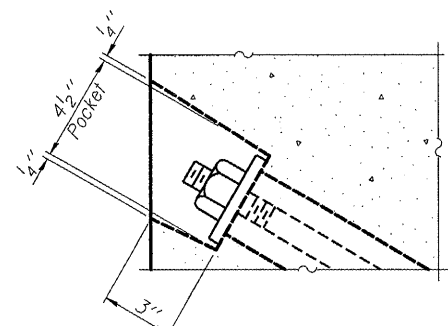
FABRIC BEARING PAD
(Interior)



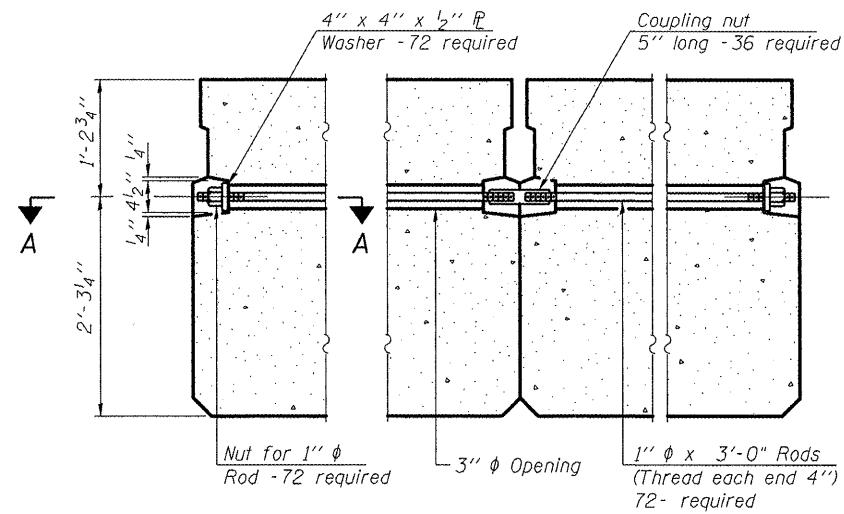
FABRIC BEARING PAD
(Exterior)

FIXED

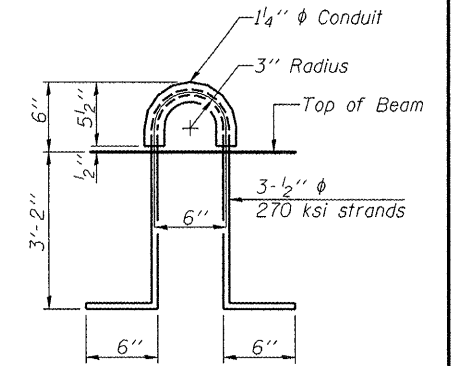
Note: Omit holes when using expansion bearings.



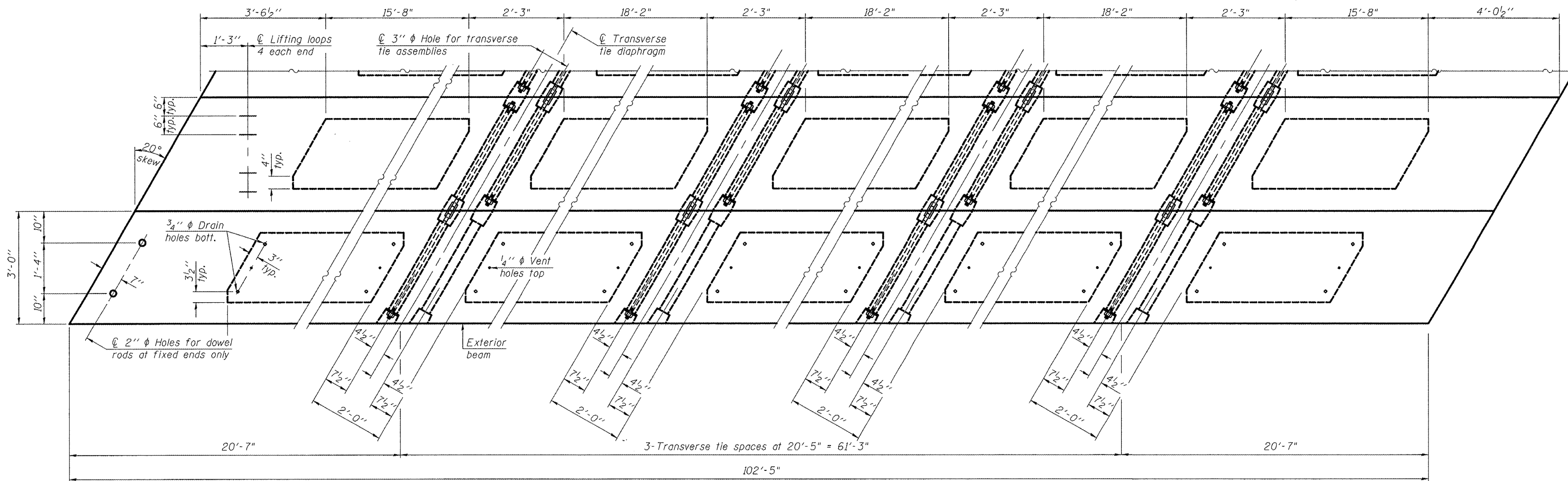
SECTION A-A



TYPICAL TRANSVERSE TIE ASSEMBLY



LIFTING LOOP DETAIL



PLAN VIEW

BILL OF MATERIAL

Precast Prestressed Conc. Deck Bms. (42" depth)	Sq. Ft.	3073
---	---------	------


42" x 36" DECK BEAM DETAILS
BLUFF ROAD OVER
PRAIRIE DU ROCHER CRK.
SN 079-3072

Note: Connect beams in pairs with the transverse tie configuration shown.

NOTES

- Prestressing steel shall be uncoated high strength, low relaxation 7-wire strand, Grade 270. The nominal diameter shall be 1/2" and the nominal cross-sectional area shall be 0.153 sq. in. The 1" rods in the transverse tie assembly shall be tightened to a snug fit and the threads set. Pockets on exterior faces of bridge shall be filled with grout after transverse tie assembly is in place.
- Reinforcement bars shall conform to ASTM A 706, Grade 60. (See Special Provisions)
- Two 3/8" fabric adjusting shims of the dimensions of the exterior bearing pad shall be provided for each bearing pad location.
- A minimum 2 1/2" lifting pin shall be used to engage the lifting loops during handling.
- Corrosion Inhibitor, per Article 1020.05(b)(12) and 1021.06 of the Standard Specifications, shall be used in the concrete for precast prestressed concrete deck beams.
- Compressive strength of prestressed concrete, f'c, shall be 6000 psi.
- Compressive strength of prestressed concrete at release, f'ci, shall be 5000 psi.

DESIGNED	ASW
CHECKED	BWP
DRAWN	ASW
CHECKED	BWP

THOUVENOT, WADE & MOERCHEN, INC.		CORPORATE OFFICE 4940 Old Collinsville Road Swansea, Illinois 62226 Tel: 618.624.4488 Fax: 618.624.6688			
SWANSEA • WATERLOO • EDWARDSVILLE • CARBONDALE • ST. CHARLES		ENGINEERS • SURVEYORS • PLANNERS			
SHEET NO. 4	F.A.S. RTE. 1857	SECTION 99-00073-00-BR	COUNTY RANDOLPH	TOTAL SHEETS 11	SHEET NO. 8
7 SHEETS		CONTRACT NO. 97363			
FED. ROAD DIST. NO.		ILLINOIS FED. AID PROJECT			