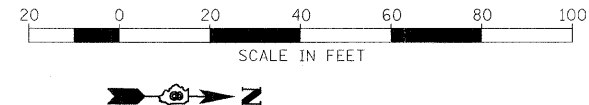
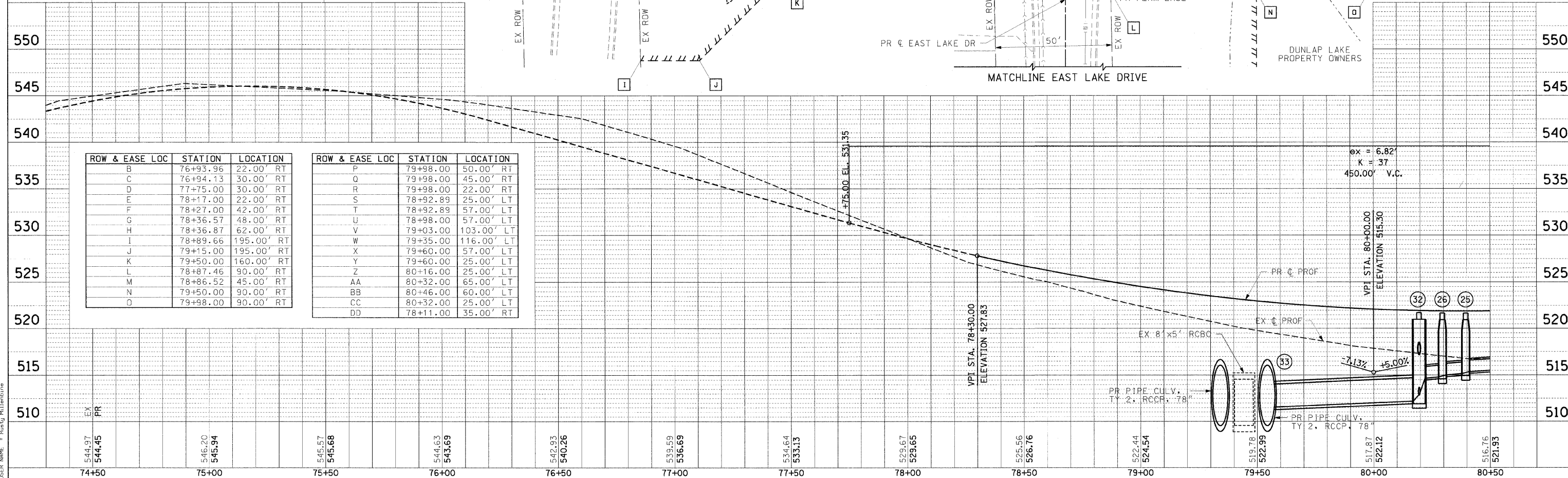
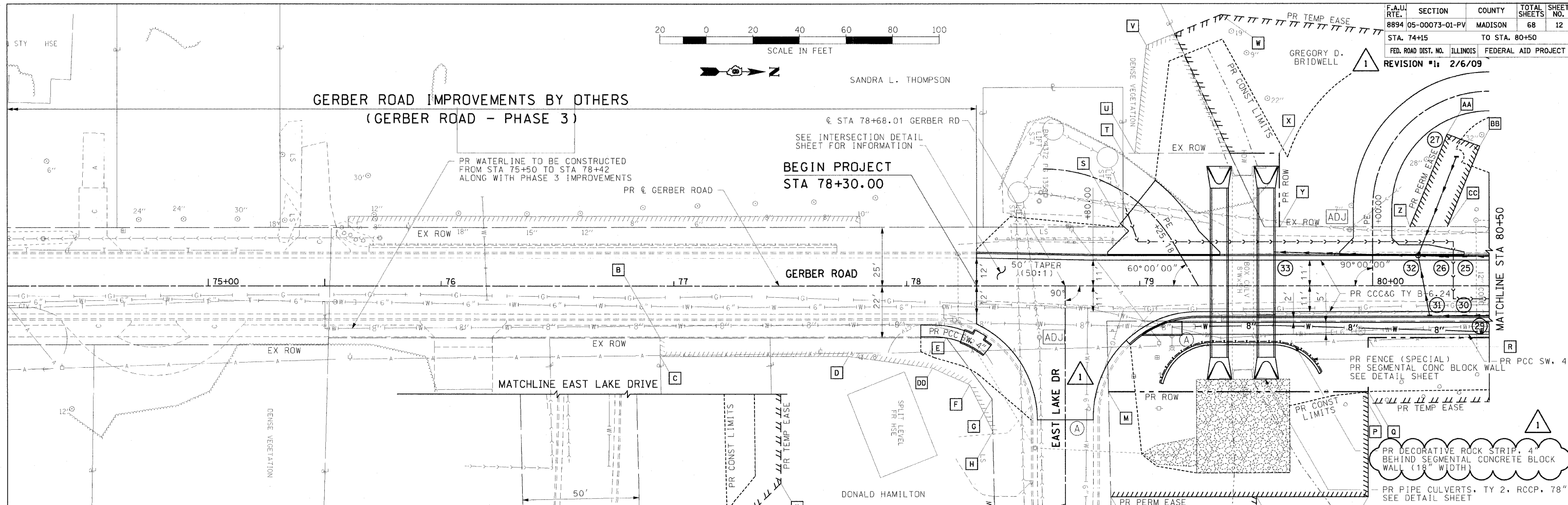


F.A.U. RTE.	SECTION	COUNTY	TOTAL SHEETS	SHEET NO.
8894	05-00073-01-PV	MADISON	68	12
STA. 74+15		TO STA. 80+50		
FED. ROAD DIST. NO.		ILLINOIS	FEDERAL AID PROJECT	
REVISION #1: 2/6/09				



SANDRA L. THOMPSON

**GERBER ROAD IMPROVEMENTS BY OTHERS
(GERBER ROAD - PHASE 3)**



ROW & EASE LOC	STATION	LOCATION	ROW & EASE LOC	STATION	LOCATION
B	76+93.96	22.00' RT	P	79+98.00	50.00' RT
C	76+94.13	30.00' RT	Q	79+98.00	45.00' RT
D	77+75.00	30.00' RT	R	79+98.00	22.00' RT
E	78+17.00	22.00' RT	S	78+92.89	25.00' LT
F	78+27.00	42.00' RT	T	78+92.89	57.00' LT
G	78+36.57	48.00' RT	U	78+98.00	57.00' LT
H	78+36.87	62.00' RT	V	79+03.00	103.00' LT
I	78+89.66	195.00' RT	W	79+35.00	116.00' LT
J	79+15.00	195.00' RT	X	79+60.00	57.00' LT
K	79+50.00	160.00' RT	Y	79+60.00	25.00' LT
L	78+87.46	90.00' RT	Z	80+16.00	25.00' LT
M	78+86.52	45.00' RT	AA	80+32.00	65.00' LT
N	79+50.00	90.00' RT	BB	80+46.00	60.00' LT
O	79+98.00	90.00' RT	CC	80+32.00	25.00' LT
			DD	78+11.00	35.00' RT

PLAN	DESIGNED	CHECKED
NOTED	PLOTTED	FILED
NO.	NO.	NO.

PROFILE	DESIGNED	CHECKED
NOTED	PLOTTED	FILED
NO.	NO.	NO.

PLOT DATE = 2/6/2009
 FILE NAME = I:\roadwork\110745101\draw\sheet\012_PP-01.dgn
 USER NAME = Russj Millardone

PLAN & PROFILE: GERBER ROAD - STA 74+15 TO STA 80+50.00