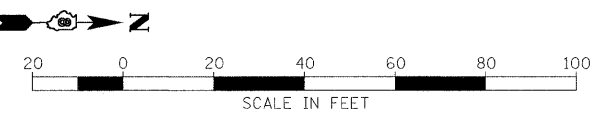


F.A.U. RTE.	SECTION	COUNTY	TOTAL SHEETS	SHEET NO.
8894 05-00073-01-PV		MADISON	68	16
STA. 98+50		TO STA. 103+79.86		
FED. ROAD DIST. NO.		ILLINOIS	FEDERAL AID PROJECT	
REVISION #1: 2/6/09				

PROP. CURVE BRIAR
 PI STA. = 103+69.31
 $\Delta = 12^\circ 08' 01''$ (LT)
 D = 57' 17' 45"
 R = 100.00'
 T = 10.63'
 L = 21.18'
 E = 0.56'
 e = N.C.
 T.R. = N.A.
 S.E. RUN = N.A.
 P.C. STA = 103+58.68
 P.T. STA = 103+79.86



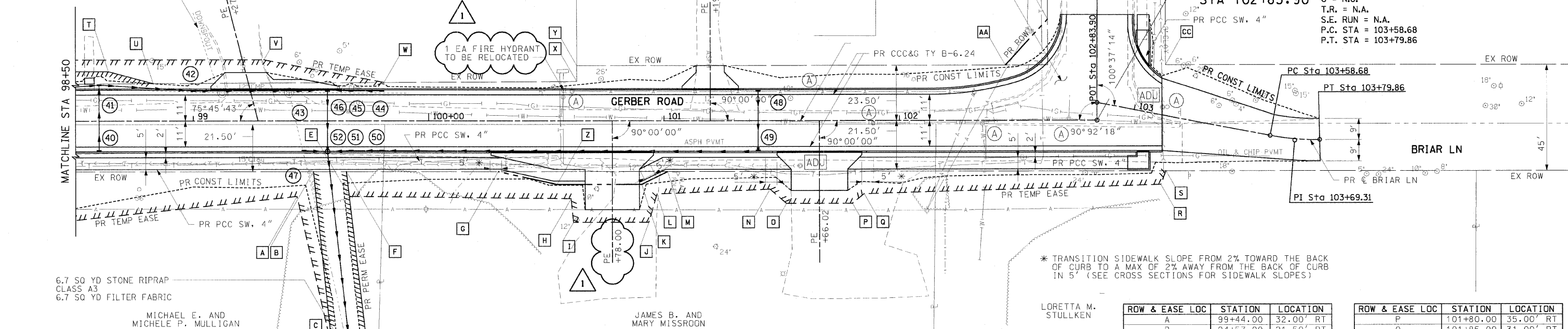
EX DOWNSPOUT TO BE CONNECTED DIRECTLY TO PR SS. (COST INCIDENTAL TO PR SS)

RUDOLPH G AND SANDRA L WILSON

LISA F. WALTON

SEE INTERSECTION DETAIL SHEET FOR INFORMATION

END PROJECT
 STA 102+83.90



* TRANSITION SIDEWALK SLOPE FROM 2% TOWARD THE BACK OF CURB TO A MAX OF 2% AWAY FROM THE BACK OF CURB IN 5' (SEE CROSS SECTIONS FOR SIDEWALK SLOPES)

6.7 SQ YD STONE RIPRAP CLASS A3
 6.7 SQ YD FILTER FABRIC

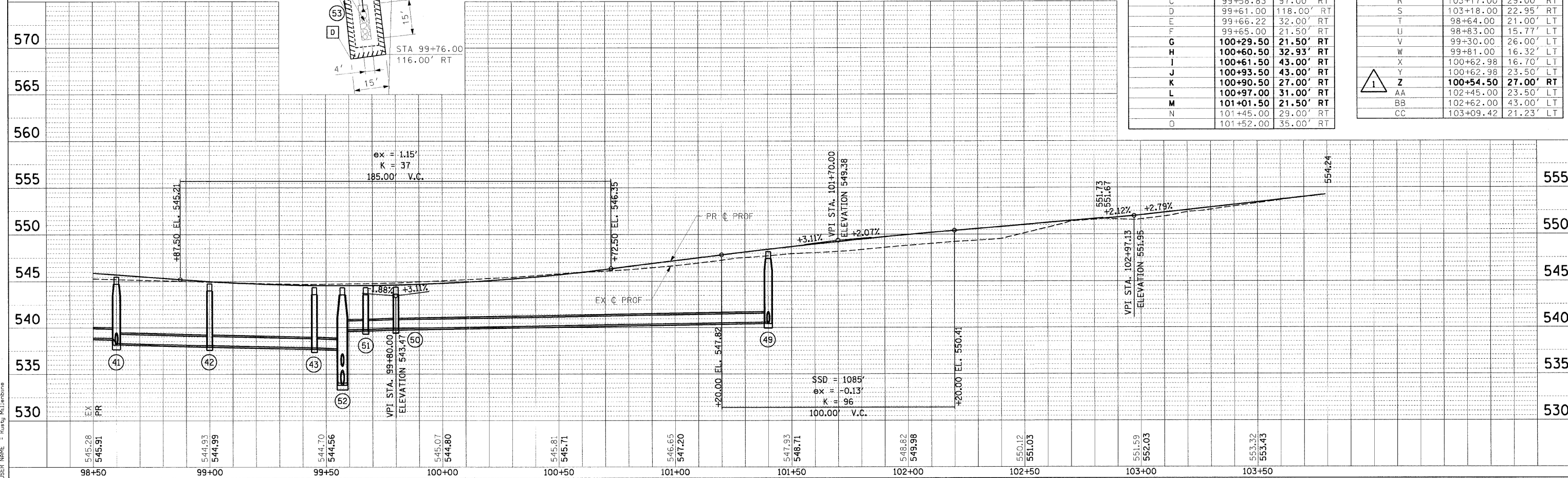
MICHAEL E. AND MICHELE P. MULLIGAN

JAMES B. AND MARY MISSROON

LORETTA M. STULLKEN

ROW & EASE LOC	STATION	LOCATION
A	99+44.00	32.00' RT
B	94+57.00	21.50' RT
C	99+58.83	97.00' RT
D	99+61.00	118.00' RT
E	99+66.22	32.00' RT
F	99+65.00	21.50' RT
G	100+29.50	21.50' RT
H	100+60.50	32.93' RT
I	100+61.50	43.00' RT
J	100+93.50	43.00' RT
K	100+90.50	27.00' RT
L	100+97.00	31.00' RT
M	101+01.50	21.50' RT
N	101+45.00	29.00' RT
O	101+52.00	35.00' RT

ROW & EASE LOC	STATION	LOCATION
P	101+80.00	35.00' RT
Q	101+85.00	31.00' RT
R	103+17.00	29.00' RT
S	103+18.00	22.95' RT
T	98+64.00	21.00' LT
U	98+83.00	15.77' LT
V	99+30.00	26.00' LT
W	99+81.00	16.32' LT
X	100+62.98	16.70' LT
Y	100+62.98	23.50' LT
Z	100+54.50	27.00' RT
AA	102+45.00	23.50' LT
BB	102+62.00	43.00' LT
CC	103+09.42	21.23' LT



DATE: _____ BY: _____
 CHECKED: _____
 PLOTTED: _____
 NO. _____

DATE: _____ BY: _____
 CHECKED: _____
 PLOTTED: _____
 NO. _____

PLOT DATE = 2/6/2009
 FILE NAME = I:\work\dwg\110746101\draw\sheet\016_PP_05.dgn
 USER NAME = Rusty Mulligan