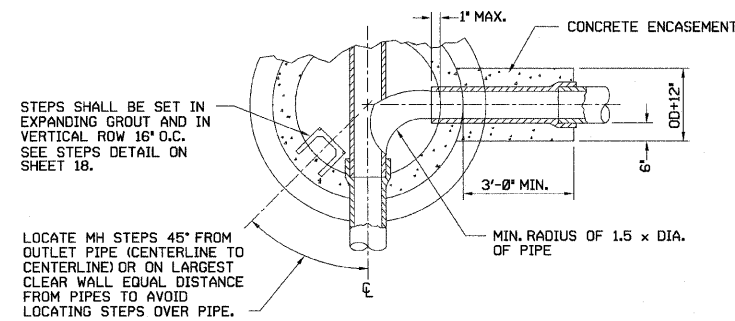
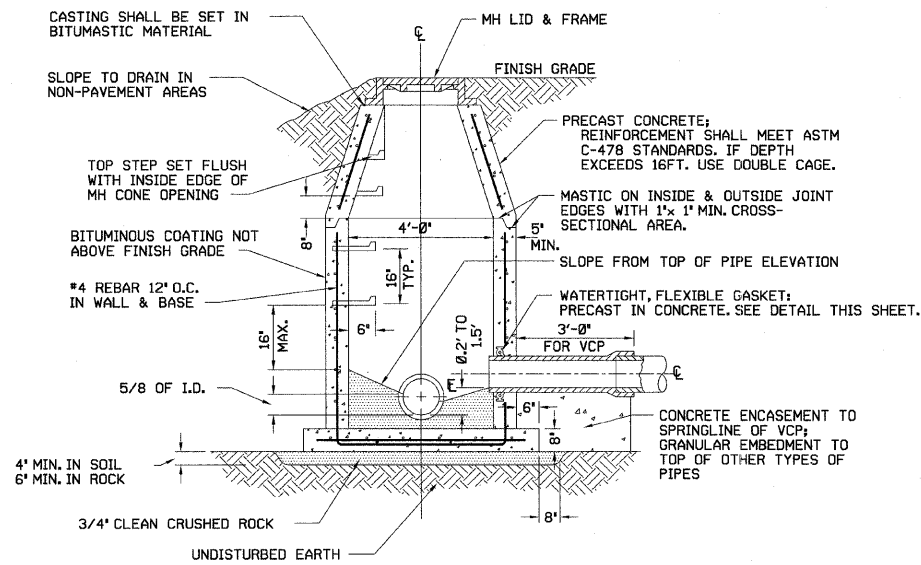


F.A.U. RTE.	SECTION	COUNTY	TOTAL SHEETS	SHEET NO.
8894	05-00073-01-PV	MADISON	68	29
STA. N.A.	TO STA. N.A.			
FED. ROAD DIST. NO.	ILLINOIS	FEDERAL AID PROJECT		

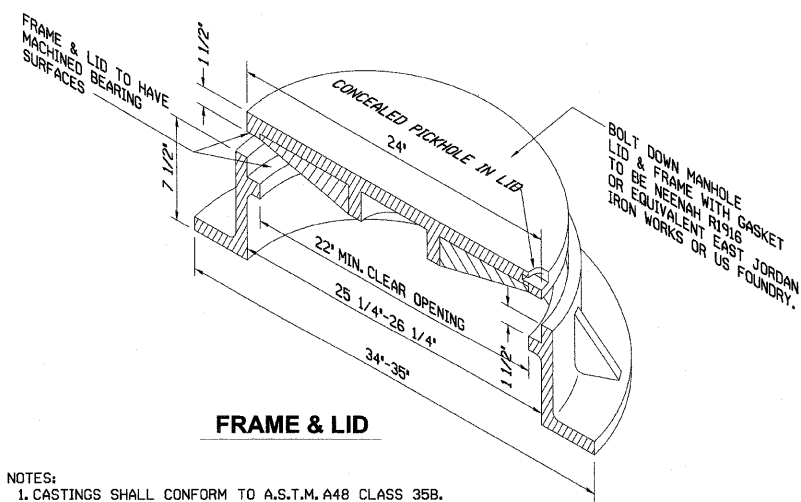


**HORIZONTAL SECTION**



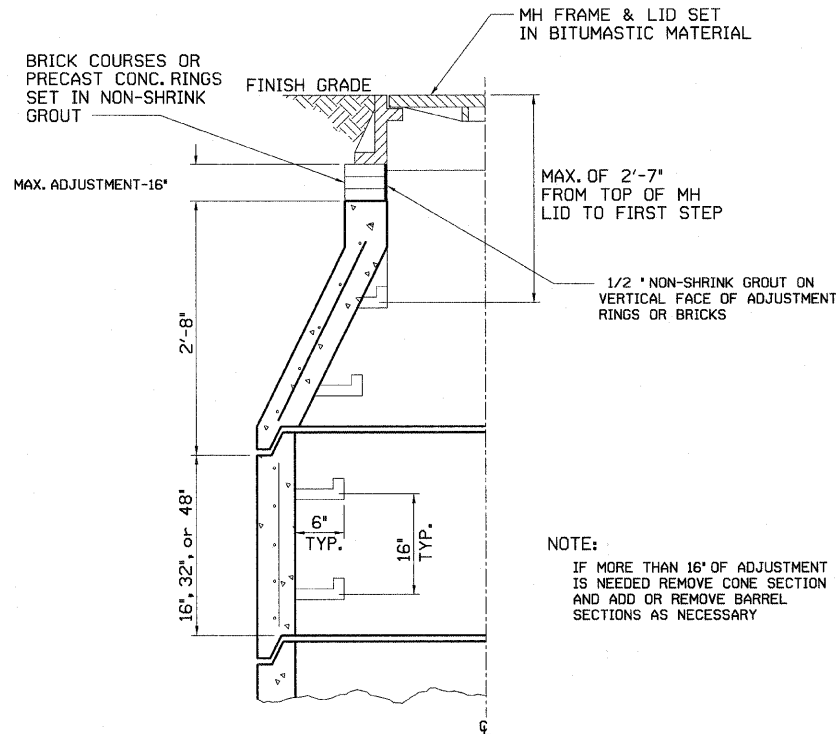
**VERTICAL SECTION**

**STANDARD MANHOLE**



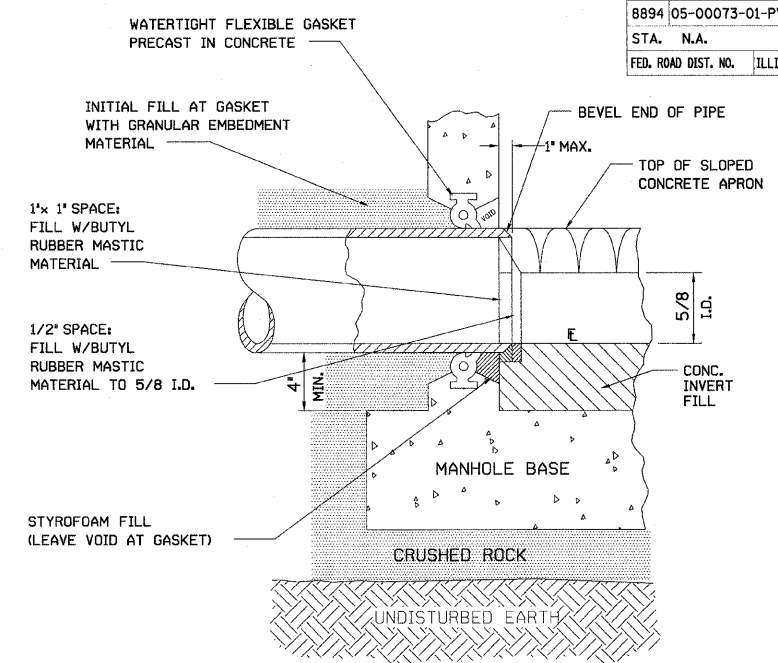
**FRAME & LID**

- NOTES:  
 1. CASTINGS SHALL CONFORM TO A.S.T.M. A48 CLASS 35B.  
 2. LID WEIGHT 135 lbs. MINIMUM. TOTAL MINIMUM WEIGHT OF 350 lbs.  
 3. FACTORY COAT WITH ASPHALT VARNISH.  
 4. FIELD COAT ALL CASTINGS WITH COALTAR PAINT.  
 5. WATERTIGHT LID AND FRAME TO BE NEENAH R1916 OR EQUIVALENT EAST JORDAN IRON WORKS OR US FOUNDRY GASKETED BOLT DOWN WITH CONCEALED PICKHOLE.  
 6. NEENAH MANHOLE STEP R-1980-J OR EQUIVALENT EAST JORDAN IRON WORKS OR US FOUNDRY MANHOLE STEP.



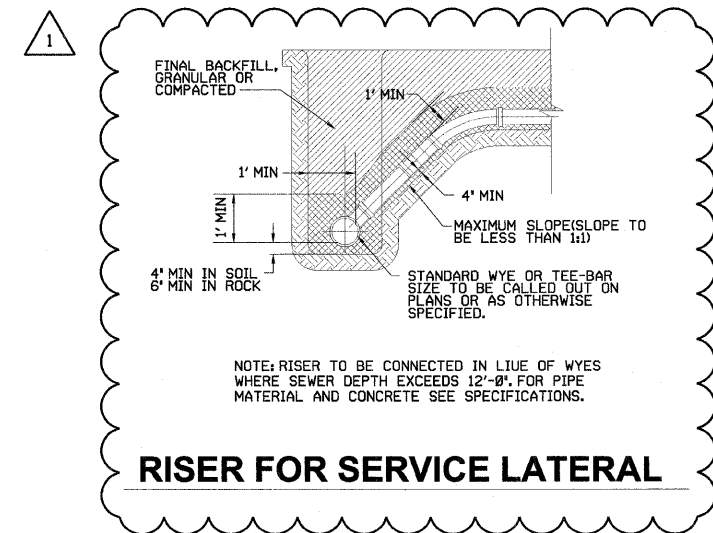
**BARREL SECTION  
MANHOLE ADJUSTMENT**

NOTE:  
 IF MORE THAN 16' OF ADJUSTMENT IS NEEDED REMOVE CONE SECTION AND ADD OR REMOVE BARREL SECTIONS AS NECESSARY

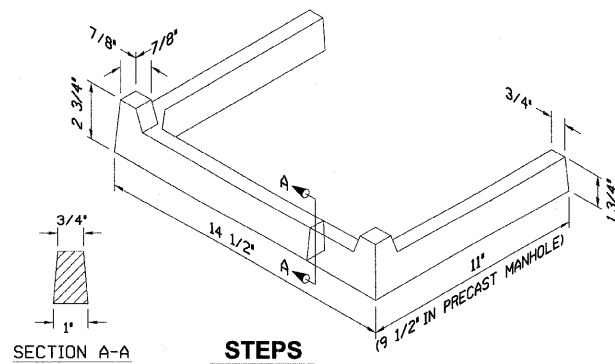


- NOTE:  
 1. BITUMINOUS COATING ON EXTERIOR SURFACE OF MANHOLE SHALL NOT COME IN CONTACT WITH PIPE GASKET.  
 2. FOR CAST-IN-PLACE CONCRETE MANHOLES OR PRE-CAST WITH BOX-OUTS, THE PIPE GASKET SHALL BE A RUBBER LABYRINTH WATERSTOP WITH STAINLESS STEEL CLAMPING BANDS LOCATED AT CENTER OF WALL AND THE SPACE BETWEEN PIPE & WALL COMPLETELY GROUTED WITH NONSHRINKING MORTAR.  
 3. PIPE MAY PROJECT 1" MAXIMUM PAST INSIDE WALL OF MANHOLE.

**MANHOLE GASKET**



**RISER FOR SERVICE LATERAL**



**STEPS**

**MANHOLE CASTINGS**

REVISIONS	
NAME	DATE
REVISION #1	2/6/09

ILLINOIS DEPARTMENT OF TRANSPORTATION

**SANITARY SEWER DETAILS**

SCALE: VERT. N.A.  
 HORIZ. N.A.  
 DATE  
 DRAWN BY AJK  
 CHECKED BY JWB