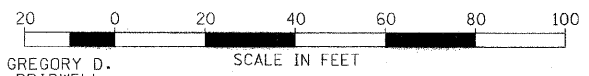
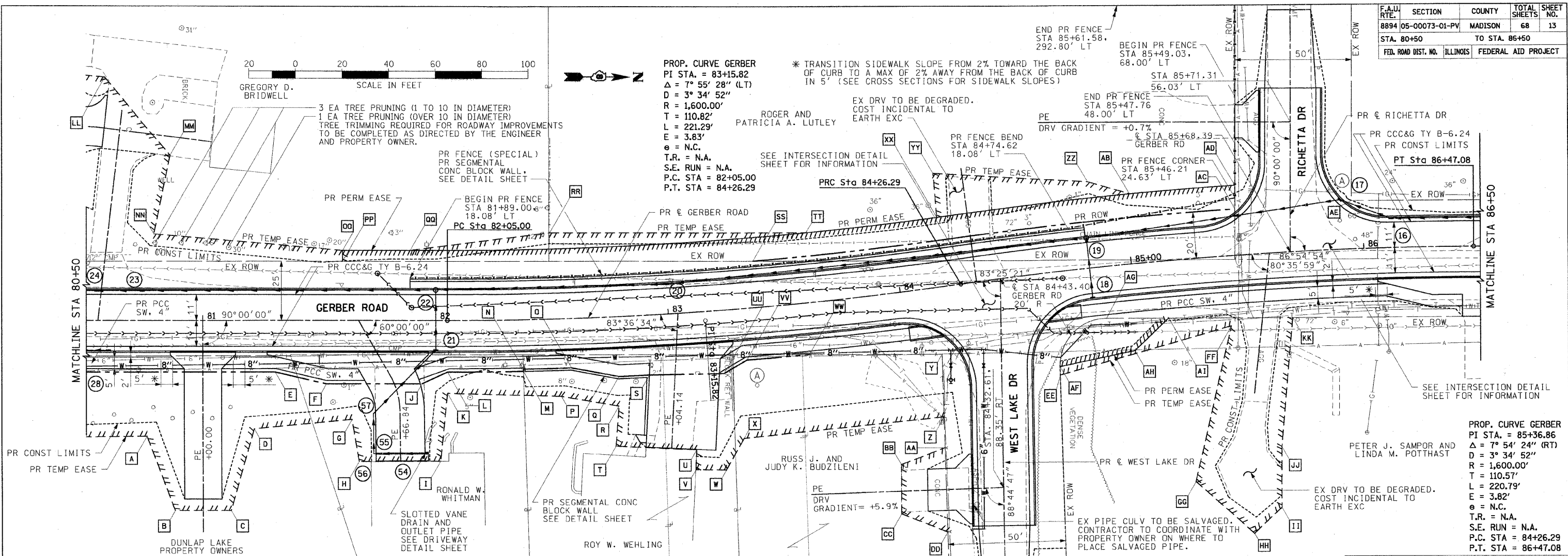


F.A.U. RTE.	SECTION	COUNTY	TOTAL SHEETS	SHEET NO.
8894 05-00073-01-PV		MADISON	68	13
STA. 80+50		TO STA. 86+50		
FED. ROAD DIST. NO.	ILLINOIS	FEDERAL AID PROJECT		

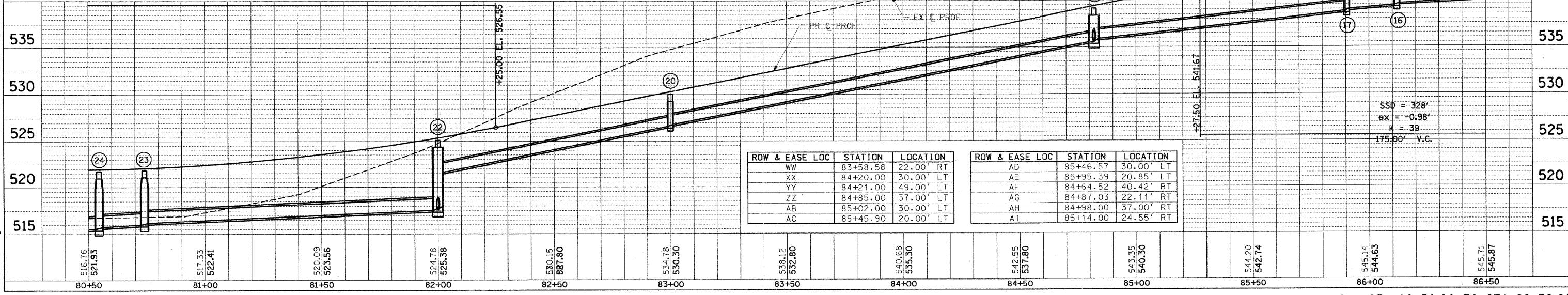


PROP. CURVE GERBER
 PI STA. = 83+15.82
 $\Delta = 7^\circ 55' 28''$ (LT)
 $D = 3^\circ 34' 52''$
 $R = 1,600.00'$
 $T = 110.82'$
 $L = 221.29'$
 $E = 3.83'$
 $e = N.C.$
 T.R. = N.A.
 S.E. RUN = N.A.
 P.C. STA = 82+05.00
 P.T. STA = 84+26.29

* TRANSITION SIDEWALK SLOPE FROM 2% TOWARD THE BACK OF CURB TO A MAX OF 2% AWAY FROM THE BACK OF CURB IN 5' (SEE CROSS SECTIONS FOR SIDEWALK SLOPES)



ROW & EASE LOC	STATION	LOCATION	ROW & EASE LOC	STATION	LOCATION	ROW & EASE LOC	STATION	LOCATION	ROW & EASE LOC	STATION	LOCATION
A	80+76.00	49.00' RT	M	82+37.24	22.00' RT	Y	84+14.37	28.44' RT	KK	85+68.00	28.00' RT
B	80+88.00	81.00' RT	N	82+37.23	21.08' RT	Z	84+11.73	55.00' RT	LL	80+58.00	104.00' LT
C	81+12.00	81.00' RT	O	82+57.67	21.08' RT	AA	84+10.47	68.00' RT	MM	80+86.00	71.00' LT
D	81+22.00	46.00' RT	P	82+53.00	33.00' RT	BB	83+91.78	73.00' RT	NN	80+79.00	37.00' RT
E	81+31.00	22.00' RT	Q	82+77.55	25.58' RT	CC	83+89.45	97.00' RT	OO	81+60.00	30.00' LT
F	81+53.00	27.00' RT	R	82+77.00	38.00' RT	DD	84+07.08	104.00' RT	PP	81+60.00	25.41' LT
G	81+64.00	42.00' RT	S	82+90.43	25.58' RT	EE	84+64.20	44.00' RT	QQ	81+89.00	30.00' LT
H	81+67.00	60.00' RT	T	82+75.00	55.00' RT	FF	85+41.00	30.00' RT	RR	82+50.00	37.00' LT
I	82+02.00	60.00' RT	U	83+08.27	58.45' RT	GG	85+20.00	95.00' RT	SS	83+38.07	20.00' LT
J	81+94.00	27.00' RT	V	83+07.43	67.00' RT	HH	85+45.00	119.00' RT	TT	83+62.21	30.00' LT
K	82+05.00	31.00' RT	W	83+20.00	68.00' RT	II	85+58.37	108.70' RT	UU	83+22.00	27.00' RT
L	82+05.00	22.00' RT	X	83+28.26	55.00' RT	JJ	85+60.00	82.67' RT	VV	83+32.00	22.00' RT



ROW & EASE LOC	STATION	LOCATION
WW	83+58.58	22.00' RT
XX	84+20.00	30.00' LT
YY	84+21.00	49.00' LT
ZZ	84+85.00	37.00' LT
AB	85+02.00	30.00' LT
AC	85+45.90	20.00' LT

ROW & EASE LOC	STATION	LOCATION
AD	85+46.57	30.00' LT
AE	85+95.39	20.85' LT
AF	84+64.52	40.42' RT
AG	84+87.03	22.11' RT
AH	84+98.00	37.00' RT
AI	85+14.00	24.55' RT

DATE: _____ BY: _____
 SURVEYED: _____
 ALIGNED: _____
 CHECKED: _____
 NO. _____

DATE: _____ BY: _____
 SURVEYED: _____
 CHECKED: _____
 NO. _____

PLOT DATE = 12/8/2008
 FILE NAME = I:\vanderkooie\074610\gerber\shimada\013_PP-02.dgn
 PLOT SCALE = 28.0000 / 1in.
 USER NAME = Rusty Miller

PLAN & PROFILE: GERBER ROAD - STA 80+50.00 TO STA 86+50.00