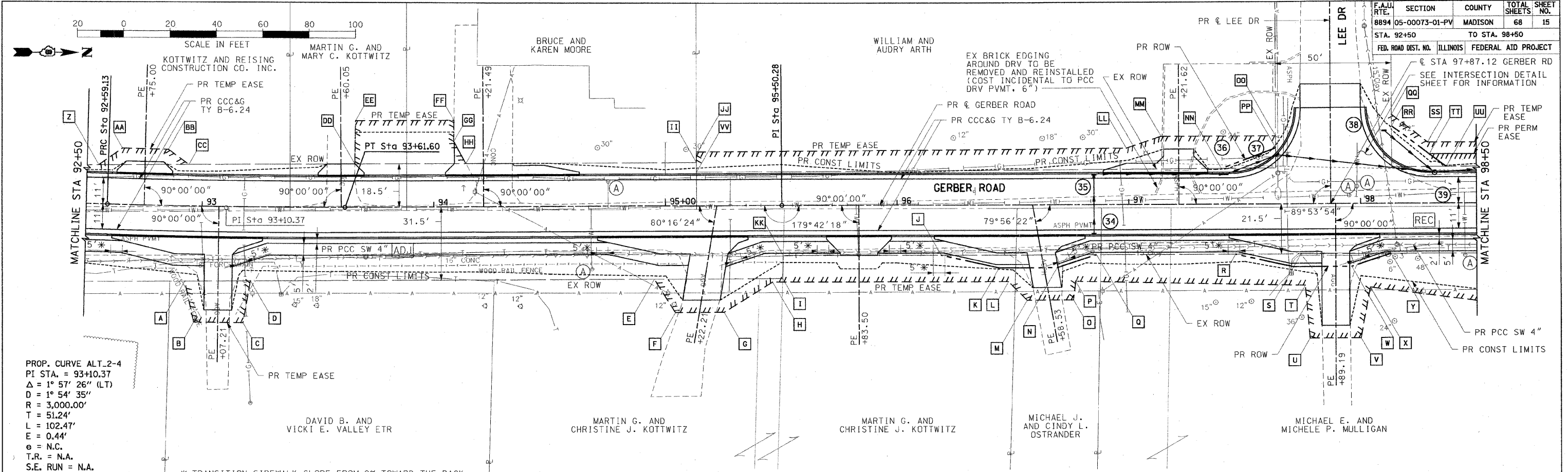


F.A.U. RTE.	SECTION	COUNTY	TOTAL SHEETS	SHEET NO.
8894	05-00073-01-PV	MADISON	68	15
STA. 92+50		TO STA. 98+50		
FED. ROAD DIST. NO.	ILLINOIS	FEDERAL AID PROJECT		
		€ STA 97+87.12 GERBER RD		
SEE INTERSECTION DETAIL SHEET FOR INFORMATION				



PROP. CURVE ALT. 2-4
 PI STA. = 93+10.37
 Δ = 1° 57' 26" (LT)
 D = 1° 54' 35"
 R = 3,000.00'
 T = 51.24'
 L = 102.47'
 E = 0.44'
 e = N.C.
 T.R. = N.A.
 S.E. RUN = N.A.
 P.C. STA = 92+59.13
 P.T. STA = 93+61.60

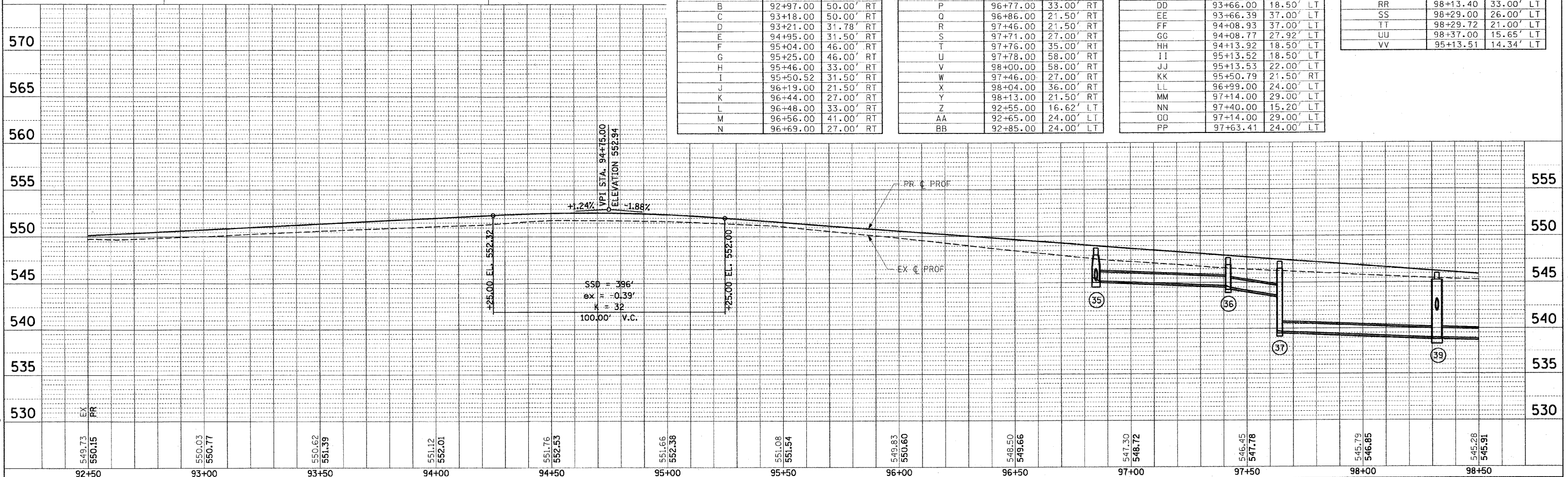
* TRANSITION SIDEWALK SLOPE FROM 2% TOWARD THE BACK OF CURB TO A MAX OF 2% AWAY FROM THE BACK OF CURB IN 5' (SEE CROSS SECTIONS FOR SIDEWALK SLOPES)

ROW & EASE LOC	STATION	LOCATION
A	92+93.00	32.29' RT
B	92+97.00	50.00' RT
C	93+18.00	50.00' RT
D	93+21.00	31.78' RT
E	94+95.00	31.50' RT
F	95+04.00	46.00' RT
G	95+25.00	46.00' RT
H	95+46.00	33.00' RT
I	95+50.52	31.50' RT
J	96+19.00	21.50' RT
K	96+44.00	27.00' RT
L	96+48.00	33.00' RT
M	96+56.00	41.00' RT
N	96+69.00	27.00' RT

ROW & EASE LOC	STATION	LOCATION
O	96+76.00	41.00' RT
P	96+77.00	33.00' RT
Q	96+86.00	21.50' RT
R	97+46.00	21.50' RT
S	97+71.00	27.00' RT
T	97+76.00	35.00' RT
U	97+78.00	58.00' RT
V	98+00.00	58.00' RT
W	97+46.00	27.00' RT
X	98+04.00	36.00' RT
Y	98+13.00	21.50' RT
Z	92+55.00	16.62' LT
AA	92+65.00	24.00' LT
BB	92+85.00	24.00' LT

ROW & EASE LOC	STATION	LOCATION
CC	92+94.00	17.74' LT
DD	93+66.00	18.50' LT
EE	93+66.39	37.00' LT
FF	94+08.93	37.00' LT
GG	94+08.77	27.92' LT
HH	94+13.92	18.50' LT
II	95+13.52	18.50' LT
JJ	95+13.53	22.00' LT
KK	95+50.79	21.50' RT
LL	96+99.00	24.00' LT
MM	97+14.00	29.00' LT
NN	97+40.00	15.20' LT
OO	97+14.00	29.00' LT
PP	97+63.41	24.00' LT

ROW & EASE LOC	STATION	LOCATION
QQ	98+13.39	38.00' LT
RR	98+13.40	33.00' LT
SS	98+29.00	26.00' LT
TT	98+29.72	21.00' LT
UU	98+37.00	15.65' LT
VV	95+13.51	14.34' LT



PROFILE	SURVEYED	DATE
	ALIGNED	
	NOTED	
	STRUCTURE	

PLOT DATE = 12/05/2008
 FILE NAME = I:\vectors\dwg\11a\0746181\0746181.dwg
 PLOT SCALE = 28.0000' / IN.
 USER NAME = Rusty Mullinane

PLAN & PROFILE: GERBER ROAD - STA 92+50.00 TO STA 98+50.00