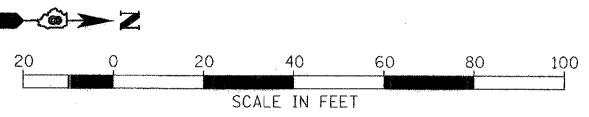


F.A.U. RTE.	SECTION	COUNTY	TOTAL SHEETS	SHEET NO.
8894	05-00073-01-PV	MADISON	68	16
STA. 98+50		TO STA. 103+79.86		
FED. ROAD DIST. NO.		ILLINOIS		FEDERAL AID PROJECT

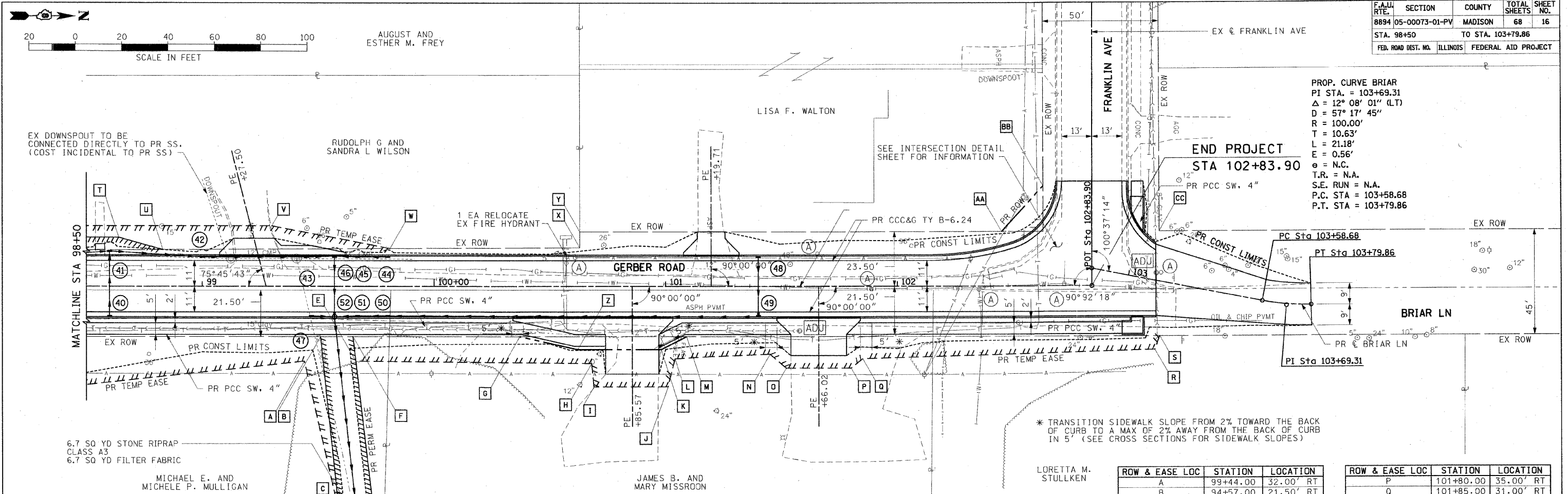


PROP. CURVE BRIAR  
 PI STA. = 103+69.31  
 $\Delta = 12^\circ 08' 01''$  (LT)  
 $D = 57^\circ 17' 45''$   
 $R = 100.00'$   
 $T = 10.63'$   
 $L = 21.18'$   
 $E = 0.56'$   
 $e = N.C.$   
 $T.R. = N.A.$   
 $S.E. RUN = N.A.$   
 $P.C. STA = 103+58.68$   
 $P.T. STA = 103+79.86$

PLAN	DATE
BY	
CHECKED	
DATE	
NO.	

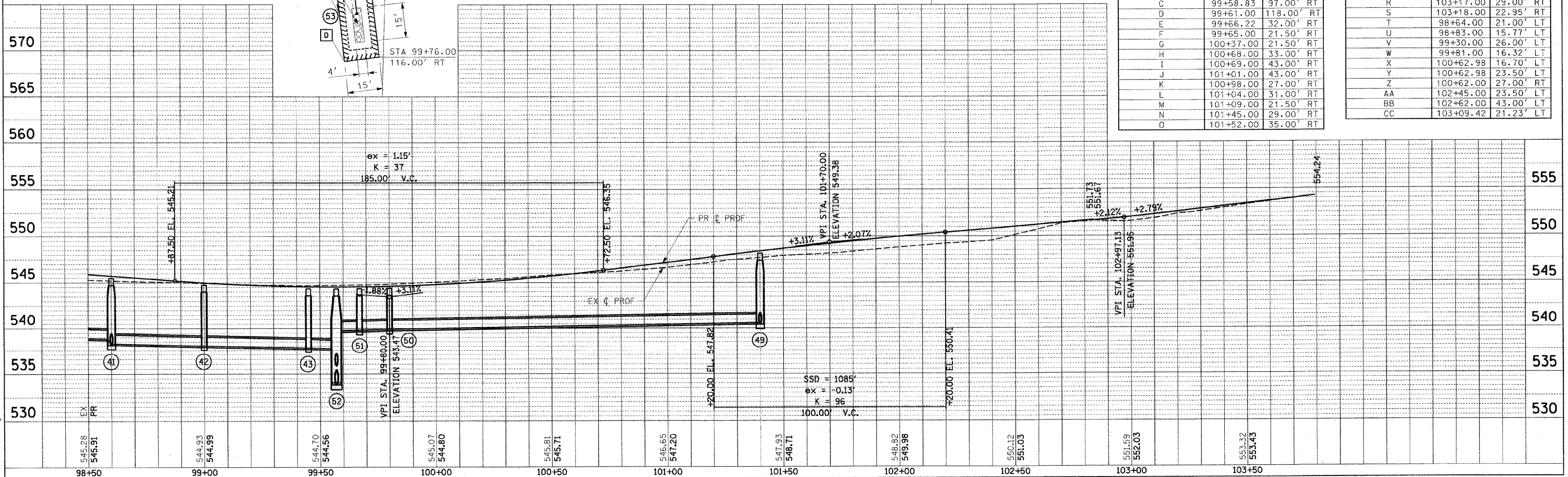
PROFILE	DATE
BY	
CHECKED	
DATE	
NO.	

PLOT DATE = 12/06/2008  
 FILE NAME = I:\vtd\pav\11a\0745101.dwg\11a\016\_PP-05.dwg  
 PLOT SCALE = 28/0000' / IN.  
 USER NAME = Rusty Millerbine



ROW & EASE LOC	STATION	LOCATION
A	99+44.00	32.00' RT
B	94+57.00	21.50' RT
C	99+58.83	97.00' RT
D	99+61.00	118.00' RT
E	99+66.22	32.00' RT
F	99+65.00	21.50' RT
G	100+37.00	21.50' RT
H	100+68.00	33.00' RT
I	100+69.00	43.00' RT
J	101+01.00	43.00' RT
K	100+98.00	27.00' RT
L	101+04.00	31.00' RT
M	101+09.00	21.50' RT
N	101+45.00	29.00' RT
O	101+52.00	35.00' RT

ROW & EASE LOC	STATION	LOCATION
P	101+80.00	35.00' RT
Q	101+85.00	31.00' RT
R	103+17.00	29.00' RT
S	103+18.00	22.95' RT
T	98+64.00	21.00' LT
U	98+83.00	15.77' LT
V	99+30.00	26.00' LT
W	99+81.00	16.32' LT
X	100+62.98	16.70' LT
Y	100+62.98	23.50' LT
Z	100+62.00	27.00' RT
AA	102+45.00	23.50' LT
BB	102+62.00	43.00' LT
CC	103+09.42	21.23' LT



PLAN & PROFILE: GERBER ROAD - STA 98+50.00 TO STA 103+79.20