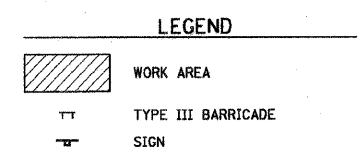
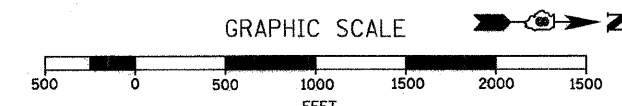
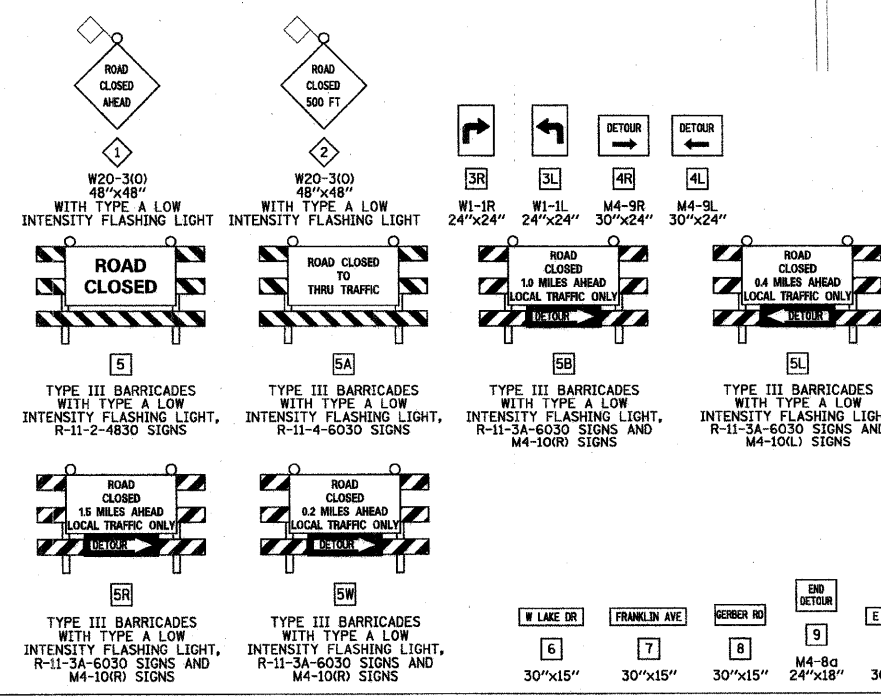
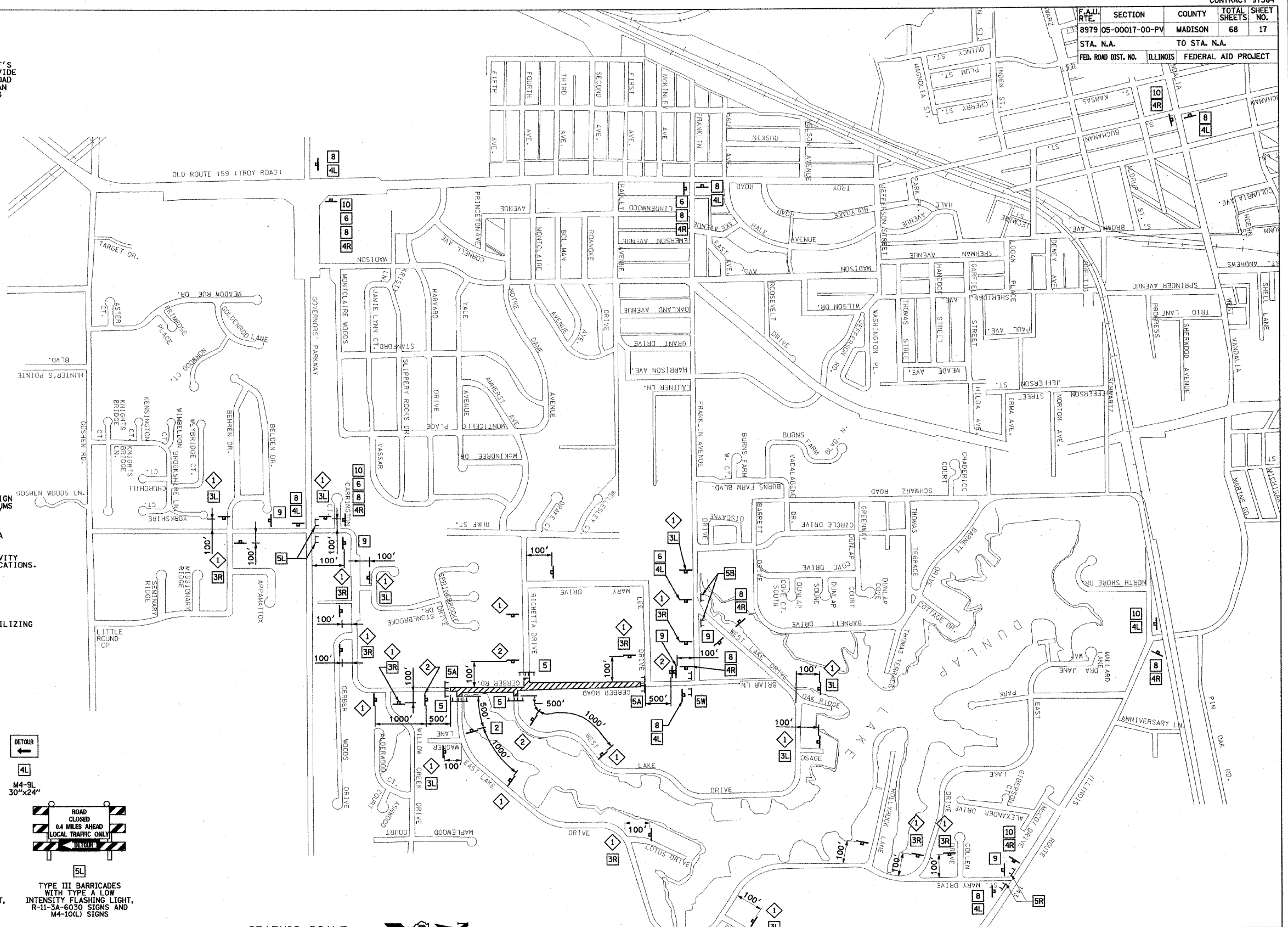


F.A.U. RTE.	SECTION	COUNTY	TOTAL SHEETS	SHEET NO.
8979 05-00017-00-PV		MADISON	68	17
STA. N.A.	TO STA. N.A.			
FED. ROAD DIST. NO.	ILLINOIS	FEDERAL AID PROJECT		

STAGE 1 CONSTRUCTION NOTES

- GERBER ROAD SHALL BE CLOSED FROM STA. 76+50.00 TO STA. 97+44.05 TO THRU TRAFFIC DURING THIS STAGE.
- ACCESS TO ALL PROPERTIES SHALL BE MAINTAINED AT ALL TIMES. IF A RESIDENT'S DRIVEWAY IS NOT ACCESSIBLE DURING CONSTRUCTION, THE CONTRACTOR SHALL PROVIDE AN ACCEPTABLE PARKING SPACE AS DETERMINED BY THE ENGINEER ALONG GERBER ROAD IN FRONT OF THE RESIDENT'S PROPERTY. THE CONTRACTOR SHALL ALSO PROVIDE AN ACCESSIBLE ROUTE AS DETERMINED BY THE ENGINEER FROM THE ON-STREET PARKING AREA TO THE RESIDENT'S HOUSE.
- COORDINATE UTILITY ADJUSTMENTS AND RELOCATIONS WITH APPROPRIATE UTILITY PRIOR TO CONSTRUCTION.
- STA. 78+30.00 TO STA. 86+45.00
 - INSTALL TEMPORARY EROSION CONTROL.
 - COMPLETE ALL REMOVAL AND ADJUSTMENT ITEMS.
 - CONSTRUCT PIPE CULVERTS AT STA. 79+34.18 AND AT STA. 79+54.33 INCLUDING RIPRAP.
 - CONSTRUCT ROADWAY EMBANKMENT AND PREPARE SUBGRADE.
 - CONSTRUCT STORM SEWER SYSTEM, GRAVITY SANITARY SEWER MAIN, SANITARY SEWER FORCE MAIN AND WATER MAIN.
 - CONSTRUCT SEGMENTAL CONCRETE BLOCK WALLS AND CORRESPONDING FENCES.
 - CONSTRUCT MODIFIED SOIL, AGGREGATE SUB-BASE AND CCC&G.
- STA. 86+45.00 TO STA. 97+44.05.
 - INSTALL TEMPORARY EROSION CONTROL.
 - CONSTRUCT STORM SEWER SYSTEM.
 - COMPLETE ALL REMOVAL AND ADJUSTMENT ITEMS FOR SB LANE.
 - CONSTRUCT ROADWAY EMBANKMENT AND PREPARE SUBGRADE FOR SB LANE.
 - CONSTRUCT MODIFIED SOIL, AGGREGATE SUB-BASE AND CCC&G FOR SB LANE.
 - COMPLETE ALL REMOVAL AND ADJUSTMENT ITEMS FOR NB LANE.
 - CONSTRUCT ROADWAY EMBANKMENT AND PREPARE SUBGRADE FOR NB LANE.
 - CONSTRUCT MODIFIED SOIL, AGGREGATE SUB-BASE AND CCC&G FOR NB LANE.
- CONSTRUCT HMA BINDER COURSE FOR STAGE 1.
- CONSTRUCT PCC DRIVEWAY PAVEMENTS AND PCC SIDEWALK FOR STAGE 1.
- COMPLETE FINAL GRADING FOR STAGE 1.
- INSTALL APPROPRIATE PERMANENT SIGNING, TEMPORARY PAVEMENT MARKING AND COMPLETE PERMANENT SEEDING FOR STAGE 1.
- BARRICADES AND CONSTRUCTION SIGNS SHALL BE POSITIONED AS SHOWN IN IDOT STANDARD 701901 AND AS DIRECTED BY THE ENGINEER.
- TYPE A LOW INTENSITY LIGHTS SHALL BE USED ON EACH BARRICADE, DRUM AND SIGN IN ADVANCE AND WITHIN THE WORK AREA SHOWING DURING HOURS OF DARKNESS. DRUMS SHALL HAVE STEADY BURN LIGHTS FOR HAZARDS OR OBSTACLES GREATER THAN 100' IN LENGTH.
- ALL WARNING SIGNS SHALL HAVE MINIMUM DIMENSIONS OF 48" BY 48" AND HAVE A BLACK LEGEND ON AN ORANGE REFLECTORIZED BACKGROUND.
- ALL WORK ZONE SIGNS ARE REQUIRED TO MEET, AS A MINIMUM, TYPE B REFLECTIVITY REQUIREMENTS OF TABLE 1091-2 IN ARTICLE 1091.02 OF THE STANDARD SPECIFICATIONS.
- LONGITUDINAL DIMENSIONS MAY BE ADJUSTED TO FIT FIELD CONDITIONS.
- WHEN FLUORESCENT SIGNS ARE USED, ORANGE FLAGS ARE NOT REQUIRED.
- ALL SIGNS SHALL BE POST MOUNTED IF CLOSURE TIME EXCEEDS FOUR DAYS.
- ALL IMPROVEMENTS TO GERBER ROAD DURING THIS STAGE SHALL BE COMPLETED UTILIZING TRAFFIC CONTROL AND PROTECTION STANDARDS 701901, BLR-21 AND BLR-22.
- ACTUAL NUMBER OF BARRICADES REQUIRED MAY DIFFER FROM THE NUMBER SHOWN.



REVISIONS		DATE
NAME		

ILLINOIS DEPARTMENT OF TRANSPORTATION

TRAFFIC CONTROL PLAN
STAGE 1

SCALE: VERT. NA
HORIZ. 1" = 400'
DATE XX/XX/XX

DRAWN BY AUK, RJM
CHECKED BY JWB

DATE 12/28/2008
 FILE NAME I:\vectors\div\11a\0746101\00a\plans\017_Traf-CNTRL-01.dgn
 PLOT SCALE = 800.001 / IN.
 USER NAME = Rusty Miller