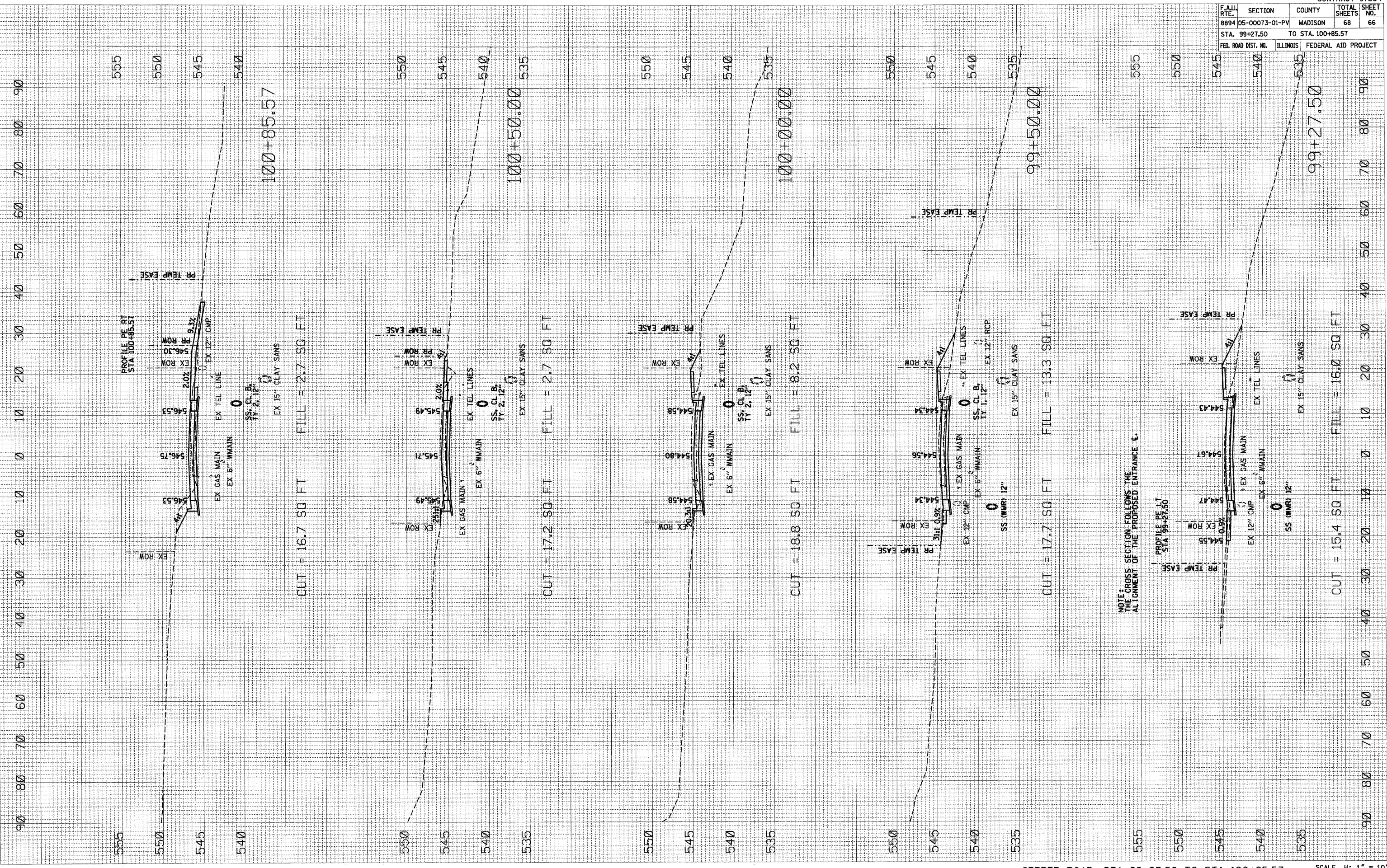


F.A.U. RTE.	SECTION	COUNTY	TOTAL SHEETS	SHEET NO.
8894	05-00073-01-PV	MADISON	68	66
STA. 99+27.50 TO STA. 100+85.57				
FED. ROAD DIST. NO.		ILLINOIS	FEDERAL AID PROJECT	

FINAL SURVEY	SURVEY	DATE
NOTED	PLOTTED	
NO. 1	NO. 2	
NO. 3	NO. 4	
NO. 5	NO. 6	
NO. 7	NO. 8	
NO. 9	NO. 10	
NO. 11	NO. 12	
NO. 13	NO. 14	
NO. 15	NO. 16	
NO. 17	NO. 18	
NO. 19	NO. 20	
NO. 21	NO. 22	
NO. 23	NO. 24	
NO. 25	NO. 26	
NO. 27	NO. 28	
NO. 29	NO. 30	
NO. 31	NO. 32	
NO. 33	NO. 34	
NO. 35	NO. 36	
NO. 37	NO. 38	
NO. 39	NO. 40	
NO. 41	NO. 42	
NO. 43	NO. 44	
NO. 45	NO. 46	
NO. 47	NO. 48	
NO. 49	NO. 50	
NO. 51	NO. 52	
NO. 53	NO. 54	
NO. 55	NO. 56	
NO. 57	NO. 58	
NO. 59	NO. 60	
NO. 61	NO. 62	
NO. 63	NO. 64	
NO. 65	NO. 66	
NO. 67	NO. 68	
NO. 69	NO. 70	
NO. 71	NO. 72	
NO. 73	NO. 74	
NO. 75	NO. 76	
NO. 77	NO. 78	
NO. 79	NO. 80	
NO. 81	NO. 82	
NO. 83	NO. 84	
NO. 85	NO. 86	
NO. 87	NO. 88	
NO. 89	NO. 90	
NO. 91	NO. 92	
NO. 93	NO. 94	
NO. 95	NO. 96	
NO. 97	NO. 98	
NO. 99	NO. 100	

ORIGINAL SURVEY	SURVEY	DATE
NOTED	PLOTTED	
NO. 1	NO. 2	
NO. 3	NO. 4	
NO. 5	NO. 6	
NO. 7	NO. 8	
NO. 9	NO. 10	
NO. 11	NO. 12	
NO. 13	NO. 14	
NO. 15	NO. 16	
NO. 17	NO. 18	
NO. 19	NO. 20	
NO. 21	NO. 22	
NO. 23	NO. 24	
NO. 25	NO. 26	
NO. 27	NO. 28	
NO. 29	NO. 30	
NO. 31	NO. 32	
NO. 33	NO. 34	
NO. 35	NO. 36	
NO. 37	NO. 38	
NO. 39	NO. 40	
NO. 41	NO. 42	
NO. 43	NO. 44	
NO. 45	NO. 46	
NO. 47	NO. 48	
NO. 49	NO. 50	
NO. 51	NO. 52	
NO. 53	NO. 54	
NO. 55	NO. 56	
NO. 57	NO. 58	
NO. 59	NO. 60	
NO. 61	NO. 62	
NO. 63	NO. 64	
NO. 65	NO. 66	
NO. 67	NO. 68	
NO. 69	NO. 70	
NO. 71	NO. 72	
NO. 73	NO. 74	
NO. 75	NO. 76	
NO. 77	NO. 78	
NO. 79	NO. 80	
NO. 81	NO. 82	
NO. 83	NO. 84	
NO. 85	NO. 86	
NO. 87	NO. 88	
NO. 89	NO. 90	
NO. 91	NO. 92	
NO. 93	NO. 94	
NO. 95	NO. 96	
NO. 97	NO. 98	
NO. 99	NO. 100	

PLOT DATE = 12/8/2009
 FILE NAME = I:\edcor\dwg\0746101\dwg\hwy\hwy99+27.50.dgn
 PLOT SCALE = 10.0000 / 1 IN.
 USER NAME = Rusty Millburne



NOTE: THIS CROSS SECTION FOLLOWS THE ALIGNMENT OF THE PROPOSED ENTRANCE &