

FAP ROUTE	SECTION	COUNTY	TOTAL SHEETS	SHEET NO.
06-000 58-00-HP		RANDOLPH	38	C-1
LOCAL ROAD PROJECT		ILLINOIS		
FEDERAL AID PROJECT				

### INDEX OF SHEETS

- C-1 COVER SHEET
- C-2 SUMMARY OF QUANTITIES AND DETAILS
- C-3 EXISTING TOPOGRAPHIC AND OVERALL SITE PLAN
- C-4 SITE PLAN AND GRADING PLAN
- C-5 SANITARY SEWER LATERAL AND PLAN AND PROFILE
- A0.1 ARCHITECTURAL LEGEND SHEET
- A1.1 ARCHITECTURAL SITE PLAN & NOTES
- A2.2 ARCHITECTURAL FLOOR PLAN & PARTITION TYPES
- A2.3 ROOF PLAN AND DETAILS
- A3.1 REFLECTED CEILING PLAN
- A4.1 BUILDING ELEVATIONS AND SECTION
- A4.2 BUILDING ELEVATIONS
- A5.1 WALL SECTIONS & EXTERIOR DETAILS
- A6.1 DOOR & WINDOW TYPES, DETAILS & SCHEDULES
- A7.1 INTERIOR ELEVATIONS & DETAILS
- M1.1 MECHANICAL PLAN AND NOTES
- E1.1 POWER & COMMUNICATIONS PLAN AND NOTES
- E2.1 LIGHTING PLAN AND NOTES
- P1.1 PLUMBING PLAN AND NOTES
- S2 FOUNDATION PLAN
- S3 ROOF FRAMING PLAN AND SHEAR WALL PLAN
- S4 WALL DETAILS
- S5 FRAMING DETAILS
- S6 SHEAR WALL DETAILS
- S7 SHEAR WALL SCHEDULE
- S8 DECK FRAMING PLAN
- S9 DECK FRAMING PLAN DETAILS

# STATE OF ILLINOIS DEPARTMENT OF TRANSPORTATION PLANS FOR PROPOSED CHESTER WELCOME CENTER SECTION 06-00058-00-HP JOB NO. C-98-306-07 CITY OF CHESTER, ILLINOIS RANDOLPH COUNTY PROJECT NO. TE-00D8(120)

RANGE 7 WEST 3rd. P.M.

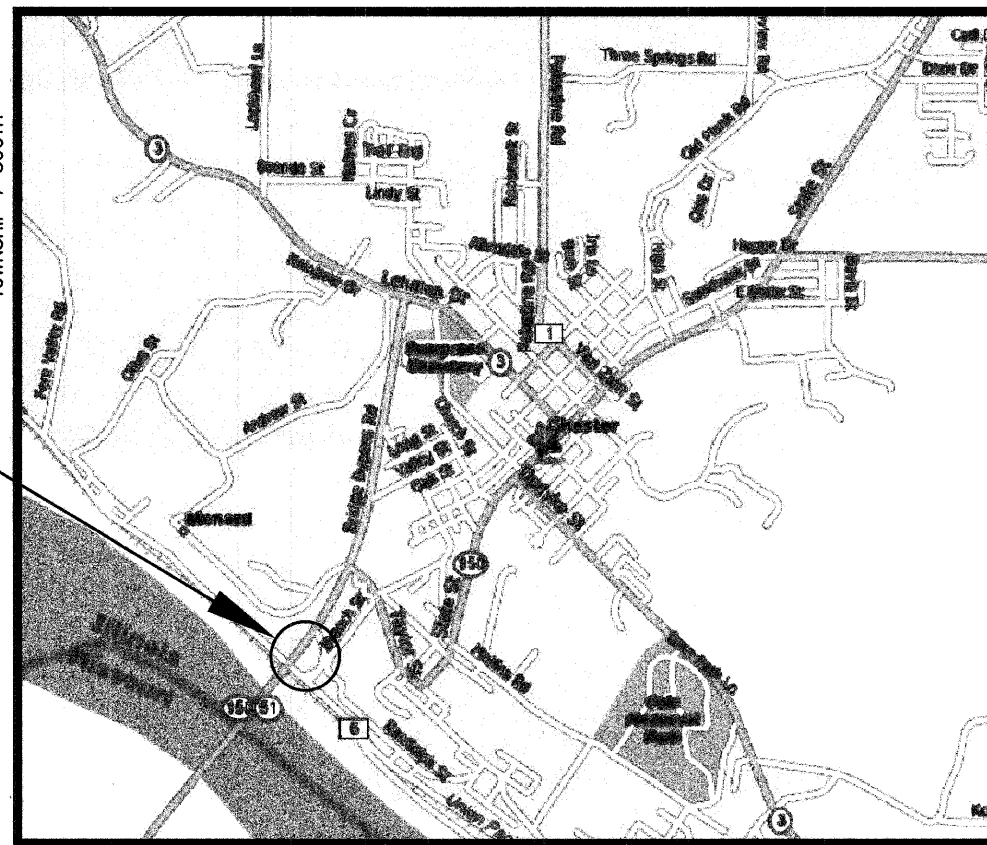
### IDOT STANDARDS

- 280001-04 TEMPORARY EROSION CONTROL SYSTEMS
- 424001-05 CURB RAMPS FOR SIDEWALKS
- 442201-03 CLASS C&D PATCHES
- 701501-05 URBAN LANE CLOSURE, 2L, 2W, UNDIVDED
- 701901-01 TRAFFIC CONTROL DEVICES
- 720001-01 SIGN PANEL MOUNTING DETAIL
- 720006-02 SIGN PANEL ERECTION DETAIL
- 728001-01 TELESCOPING STEEL SIGN SUPPORT

### UTILITIES

- WATER, SEWER & GAS** CITY OF CHESTER  
1330 SWANWICK STREET  
CHESTER, ILLINOIS 62233  
(618)826-2326
- ELECTRIC** AMEREN IP  
1050 WEST BOULEVARD  
BELLEVILLE, IL 62221  
(800)755-5000
- TELEPHONE** VERIZON  
1401 HIGH STREET  
CHESTER, ILLINOIS 62233  
(800)483-4000  
(618)826-4591
- CABLE T.V.** NEW WAVE  
823 EAST BROADWAY  
SPARTA, ILLINOIS 62286  
(888)863-9928

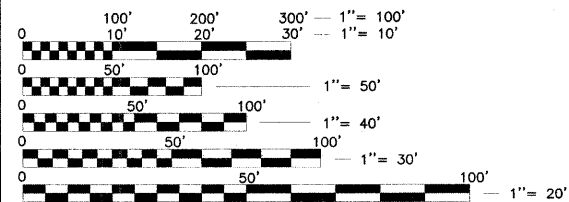
**CONSTRUCTION SITE**



**LOCATION MAP**  
NOT TO SCALE

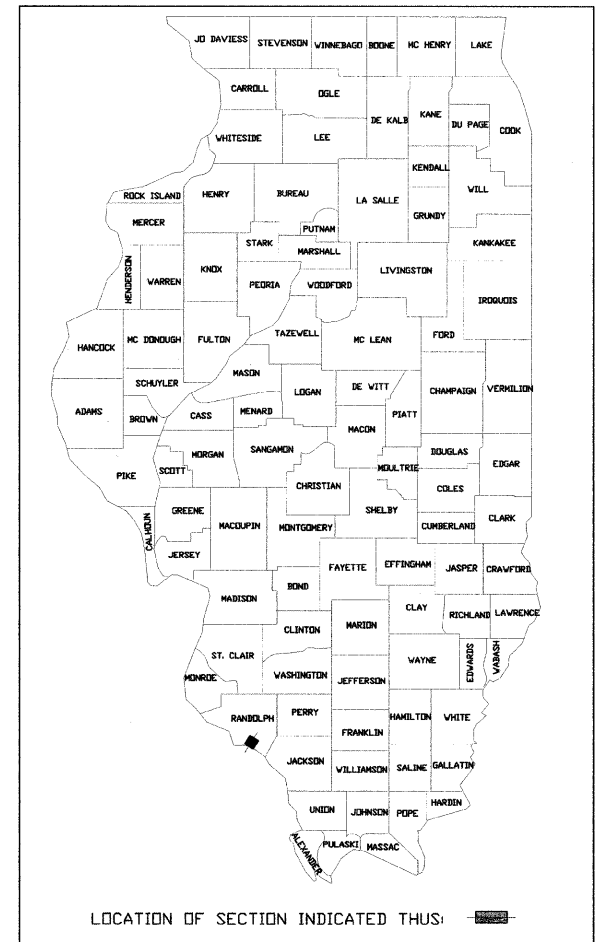
LENGTH OF PROJECT  
TOTAL SITE AREA ±3 ACRES

STREET DESIGN DESIGNATION:  
ROADWAY CLASSIFICATION - N/A  
DESIGN SPEED - N/A  
DESIGN TRAFFIC (2027) ADT - N/A



FULL SIZE PLANS HAVE BEEN PREPARED USING STANDARD ENGINEERING SCALES, REDUCED SIZED PLANS WILL NOT CONFORM TO STANDARD SCALES, IN MAKING MEASUREMENTS ON REDUCED PLANS, THE ABOVE SCALES MAY BE USED.

J.U.L.I.E.  
JOINT UTILITY LOCATION INFORMATION FOR EXCAVATION  
1-800-892-0123



STATE OF ILLINOIS DEPARTMENT OF TRANSPORTATION	
APPROVED	January 8 <sup>th</sup> 20 09 <i>Marty Beer</i> CITY OF CHESTER, MAYOR
PASSED	1/9 20 09 <i>[Signature]</i> DISTRICT EIGHT ENGINEER OF LOCAL ROADS & STREETS
RELEASING FOR BID BASED ON LIMITED REVIEW	1/9 20 09 <i>[Signature]</i> DEPUTY DIRECTOR OF HIGHWAYS, REGION 5 ENGINEER



*Craig Brauer*  
CRAIG BRAUER, P.E.  
LICENSE NO. 047294  
DATE 1/8/09  
EXPIRES 11-30-09

**TWN** PREPARED BY:  
THOUVENOT, WADE & MOERCHEN, INC.