

**THOUVENOT, WADE & MOERCHEN, INC.**  
ENGINEERS ♦ SURVEYORS ♦ PLANNERS



**CORPORATE OFFICE**  
4940 OLD COLLINSVILLE RD.  
SWANSEA, ILLINOIS 62226  
TEL (618) 624-4488  
FAX (618) 624-6688  
corp@twm-inc.com

**WATERLOO OFFICE**  
113 SOUTH MAIN STREET  
WATERLOO, ILLINOIS 62298  
TEL (618) 939-5050  
FAX (618) 939-3938  
waterloo@twm-inc.com

**ST. LOUIS OFFICE**  
1001 CRAIG ROAD, SUITE 260  
ST. LOUIS, MISSOURI 63146  
TEL (314) 236-5052  
FAX (314) 872-2194  
stlouis@twm-inc.com

PROFESSIONAL REGISTRATIONS	LICENSE NO.
ILLINOIS PROFESSIONAL DESIGN FIRM	184-02120
PROFESSIONAL ENGINEERING CORP.	02-035370
PROFESSIONAL STRUCTURAL ENGR. CORP.	01-005202
ILLINOIS PROF. LAND SURVEYING CORP.	048-000209
MISSOURI PROFESSIONAL ENGR. CORP.	NC 001528
MISSOURI LAND SURVEYING CORP.	NC 000346

SEAL

Signature: \_\_\_\_\_  
Expiration Date: \_\_\_\_\_  
STATEMENT OF RESPONSIBILITY

I hereby confirm that the document herein to be authenticated by my seal is restricted to this sheet, and I hereby disclaim any responsibility for all other drawings, specifications, estimates, reports or other documents or instruments relating to or intended to be utilized for any other part of the architectural, engineering or survey project.

**SUMMARY OF QUANTITIES AND DETAILS**

**CHESTER WELCOME CENTER  
CITY OF CHESTER  
RANDOLPH COUNTY, ILLINOIS**

CREATED ON:	JANUARY 04, 2008	
REV.	DATE	DESCRIPTION
▲	09/02/08	REVISIONS PER CITY OF CHESTER
▲	12/16/08	REVISIONS PER I.D.O.T.
▲	01/09/09	REVISIONS PER I.D.O.T.

DRAWN BY:	KAK	SHEET
DESIGNED BY:		<b>C-2</b>
CHECKED BY:		
APPROVED BY:		
PROJECT NUMBER:	D33050421	
<input type="checkbox"/> ISSUED FOR REVIEW		<input type="checkbox"/> RECORD DRAWING

**GENERAL NOTES**

ANY REFERENCE TO A STANDARD IN THESE PLANS SHALL BE INTERPRETED TO MEAN THE EDITION, AS INDICATED BY THE SUB-NUMBER LISTED IN THE INDEX OF SHEETS, OR THE COPY OF THE STANDARD INCLUDED IN THESE PLANS.

ANY FACILITIES OR APPURTENANCES WHICH ARE THE PROPERTY OF ANY PUBLIC UTILITY LOCATED WITHIN THE LIMITS OF CONSTRUCTION SHALL BE RELOCATED OR ADJUSTED BY THEIR RESPECTIVE OWNERS. THE CONTRACTOR SHALL NOTIFY AND COOPERATE WITH THE OWNERS OF ANY SUCH FACILITY IN THEIR REMOVAL AND REARRANGE HIS OPERATIONS IN ORDER THAT THE UTILITY'S OPERATIONS AND THE CONSTRUCTION OF THIS PROJECT MAY PROGRESS IN A REASONABLE MANNER.

THE TYPE, SIZE, AND LOCATION OF UTILITIES AS DELINEATED IN THESE TOPOGRAPHIC LAND SURVEY DOCUMENTS AND/OR CIVIL ENGINEERING DESIGN DOCUMENTS HAVE BEEN DETERMINED BY REVIEW OF AVAILABLE EXISTING "AS-BUILT" OR RECORD DRAWINGS; FIELD SURVEY OF J.U.L.I.E. MARKED UTILITIES; OR FIELD SURVEY OF ABOVE GROUND SURFACE UTILITY FEATURES. THE OWNER AND ENGINEER HAVE NOT UNDERTAKEN SUBSURFACE EXPLORATORY INVESTIGATIONS TO CONFIRM OR VERIFY THE UTILITIES SHOWN ON THESE DOCUMENTS, THEREFORE THEIR EXACT LOCATION, SIZE AND FUNCTION MUST BE CONSIDERED APPROXIMATE AND MUST BE FIELD CONFIRMED BY THE CONTRACTOR.

THE ENGINEER AND OWNER FURTHER DO NOT WARRANT THAT ALL UTILITIES HAVE BEEN ILLUSTRATED ON THESE DOCUMENTS. THE CONTRACTOR IS SOLELY RESPONSIBLE FOR CONTACTING J.U.L.I.E. FOR FIELD VERIFICATION OF ALL UTILITIES ON THE SITE PRIOR TO COMMENCEMENT OF CONSTRUCTION. IF THE CONTRACTOR DETERMINES THAT SUBSTANTIAL DISCREPANCY EXISTS BETWEEN FIELD VERIFIED UTILITIES AND THESE PLANS WHICH WOULD SIGNIFICANTLY AFFECT THE FUNCTION, COST, OR PERFORMANCE OF THE PROJECT, THE CONTRACTOR SHALL IMMEDIATELY CONTACT THE ENGINEER FOR CLARIFICATION AND PROJECT DIRECTION.

THE CONTRACTOR SHALL CONFINE HIS OPERATIONS TO THE AREA LOCATED WITHIN THE CONSTRUCTION LIMIT LINES, AS SHOWN ON PLANS. ANY AREA DISTURBED BEYOND THESE LIMITS SHALL BE RESTORED TO ITS ORIGINAL CONDITION AT THE CONTRACTOR'S EXPENSE.

EVERY TREE SHALL BE SAVED IF POSSIBLE. THE ENGINEER IN THE FIELD WILL VERIFY AND MARK ALL TREES REQUIRED TO BE REMOVED. SHOULD THE ENGINEER'S DECISION INCREASE OR DECREASE THE QUANTITIES OF WORK TO BE PERFORMED FROM THE PLANS, THE CONTRACTOR SHALL ACCEPT PAYMENT AS STATED IN ARTICLE 104.03 OF THE STANDARD SPECIFICATIONS. TREES OUTSIDE THE LIMITS OF CONSTRUCTION SHALL NOT BE DISTURBED UNLESS DESIGNATED BY THE ENGINEER.

IT IS THE CONTRACTOR'S RESPONSIBILITY TO INSURE THAT ALL EROSION AND DISPLACED SEDIMENT DOES NOT MIGRATE OFF SITE. IF UNEXPECTED EROSION OR SEDIMENTATION OCCURS, OR IF THE EROSION PLAN STRUCTURES BECOME DAMAGED, THE CONTRACTOR SHALL PROVIDE SUFFICIENT MEASURES TO REPAIR, REPLACE, OR INSTALL EROSION CONTROL STRUCTURES TO INSURE OFF-SITE DAMAGE DOES NOT OCCUR. ANY SEDIMENT OR EROSION DAMAGE WHICH OCCURS OFF-SITE SHALL BE REPAIRED BY THE CONTRACTOR AT HIS EXPENSE.

ALL EARTH SURFACES DISTURBED BY CONSTRUCTION OR AS DIRECTED BY THE ENGINEER SHALL BE SEEDED. THE FOLLOWING QUANTITIES HAVE BEEN INCLUDED IN THE PAY ITEM "SEEDING, CLASS 1" AND NO ADDITIONAL COMPENSATION WILL BE ALLOWED.

- 0.61 ACRES SEEDING CL 1
- 55 POUNDS NITROGEN FERTILIZER NUTRIENT
- 55 POUNDS PHOSPHORUS FERTILIZER NUTRIENT
- 55 POUNDS POTASSIUM FERTILIZER NUTRIENT

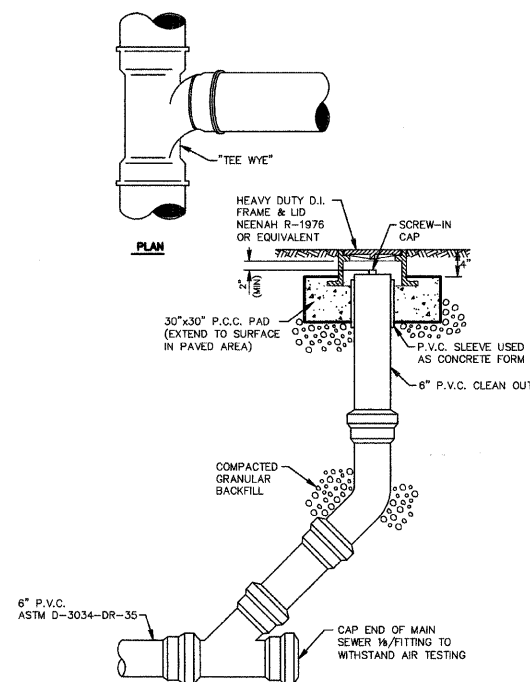
SEEDING DATES: FALL: AUG. 16 - DEC. 31  
SPRING: JAN. 1 - MAY 31  
NO SEEDING SHALL BE DONE BETWEEN JUNE 1 - AUG. 15.

IT IS INTENDED THAT ANY CULVERTS DAMAGED BY OR REMOVED BY THE CONTRACTOR OTHER THAN THOSE NOTED ON THE PLANS TO BE REMOVED WILL HAVE TO BE REMOVED AND/OR REPLACED AT THE CONTRACTOR'S SOLE EXPENSE.

ALL TRAFFIC CONTROL INCLUDING BUT NOT LIMITED TO, WORK ZONE, TEMPORARY, AND PERMANENT, SHALL BE FURNISHED, INSTALLED, MAINTAINED, RELOCATED, AND/OR REMOVED IN ACCORDANCE WITH SECTION 701 OF THE LATEST EDITION OF THE IDOT STANDARD SPECIFICATIONS FOR ROAD AND BRIDGE CONSTRUCTION AND THE LATEST EDITION OF THE MANUAL ON UNIFORM TRAFFIC CONTROL DEVICES.

TRAFFIC CONTROL SIGNS SHALL BE 48" FLUORESCENT ORANGE.

THE CONTRACTOR IS RESPONSIBLE FOR CONTACTING THE CITY OF CHESTER AT LEAST FORTY-EIGHT (48) HOURS IN ADVANCE PRIOR TO COMMENCEMENT OF ANY CONSTRUCTION ACTIVITIES OR WORK REQUIRING INSPECTION OR APPROVAL BY THE AFFECTED UNITS OF GOVERNMENT.



**CLEANOUT DETAIL**

SPECIFICATIONS: SANITARY SEWER PIPE SHALL CONFORM TO ASTM D-3034-DR-35 WITH ELASTOMERIC JOINTS IN CONFORMANCE WITH ASTM D-3212.

**SUMMARY OF QUANTITIES**

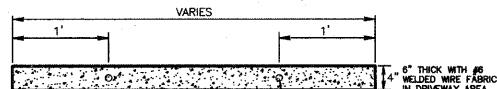
PAY CODE NUMBER	PAY ITEM DESCRIPTION	UNIT	TOTAL QUANTITY
20400800	FURNISHED EXCAVATION	CU YD	95
20800150	TRENCH BACKFILL	CU YD	61
25000100	SEEDING, CLASS 1	ACRE	0.20
25000400	NITROGEN FERTILIZER NUTRIENT	POUND	18
25000500	PHOSPHORUS FERTILIZER NUTRIENT	POUND	18
25000600	POTASSIUM FERTILIZER NUTRIENT	POUND	18
25100105	MULCH, METHOD 1	ACRE	0.20
25101504	WOOD CHIP MULCH 4"	SQ YD	55
25200100	SODDING	SQ YD	40
28000400	PERIMETER EROSION BARRIER	FOOT	362
40300100	BITUMINOUS MATERIALS (PRIME COAT)	GALLON	607
40300300	BITUMINOUS MATERIALS (COVER AND SEAL COATS)	GALLON	567
40300600	SEAL COAT AGGREGATE	TON	16
42300200	PORTLAND CEMENT CONCRETE DRIVEWAY PAVEMENT, 6 INCH	SQ YD	36
42400100	PORTLAND CEMENT CONCRETE SIDEWALK 4 INCH	SQ FT	861
42400800	DETECTABLE WARNINGS	SQ FT	16
44000600	SIDEWALK REMOVAL	SQ FT	72
44201741	CLASS D PATCHES, TYPE II, 8 INCH	SQ YD	30
56200500	WATER SERVICE LINE 1 1/2"	FOOT	89
67100100	MOBILIZATION	LUMP SUM	1
70101800	TRAFFIC CONTROL AND PROTECTION, (SPECIAL)	LUMP SUM	1
70102620	TRAFFIC CONTROL AND PROTECTION, STANDARD 701501	LUMP SUM	1
72000100	SIGN PANEL - TYPE 1	SQ FT	2
72800100	TELESCOPING STEEL SIGN SUPPORT	FOOT	12
X0321309	CONCRETE PAD	SQ YD	14
X0322672	SPLIT RAIL FENCE TO BE REMOVED AND RE-ERECTED	FOOT	100
XX000959	TRASH RECEPTACLES	EACH	3
XX005661	REMOVE AND RELOCATE SIGN NO. 1	EACH	1
XX005662	REMOVE AND RELOCATE SIGN NO. 2	EACH	1
XX005962	BENCH	EACH	2
XX007056	BUILDING	LUMP SUM	1
Z0056800	SANITARY SEWER, 6"	FOOT	262

\* ASTERICK REPRESENTS SPECIALTY ITEMS.

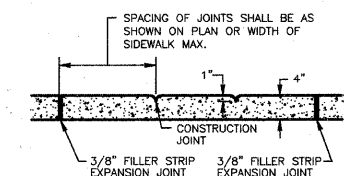
**EARTHWORK SCHEDULE**

LOCATION ENTIRE SITE	EARTH EXCAVATION (CU YD) 20200100	EARTH EXCAVATION ADJUSTED FOR SHRINKAGE (CU YD)	EMBANKMENT	EARTHWORK BALANCE WASTE (+) SHORTAGE (-) (CU YD)
	0	0	95	-95

**EARTHWORK NOTE:**  
THERE IS MINIMAL EARTH EXCAVATION WITH THE NEW SIDEWALK CONSTRUCTION AND THE FURNISHED EXCAVATION IS TO BE PLACED NEAR BRANCH STREET FOR COVER OVER THE PROPOSED SEWER LATERAL.

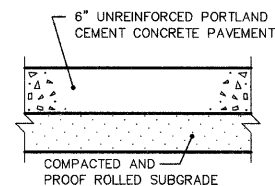


**SIDEWALK DETAIL**

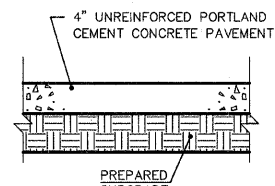


**SIDEWALK JOINT DETAIL**

NOTE: MAXIMUM 25' SPACING BETWEEN EXPANSION JOINTS PROVIDE EXPANSION JOINT MATERIAL AND SEALANT WHERE SIDEWALK AND BUILDING INTERFACE.



**HANDICAPPED PARKING PAVEMENT**



**CONCRETE PAD FOR RELOCATED PICNIC TABLE**