

**THOUVENOT, WADE & MOERCHEN, INC.**  
ENGINEERS ♦ SURVEYORS ♦ PLANNERS



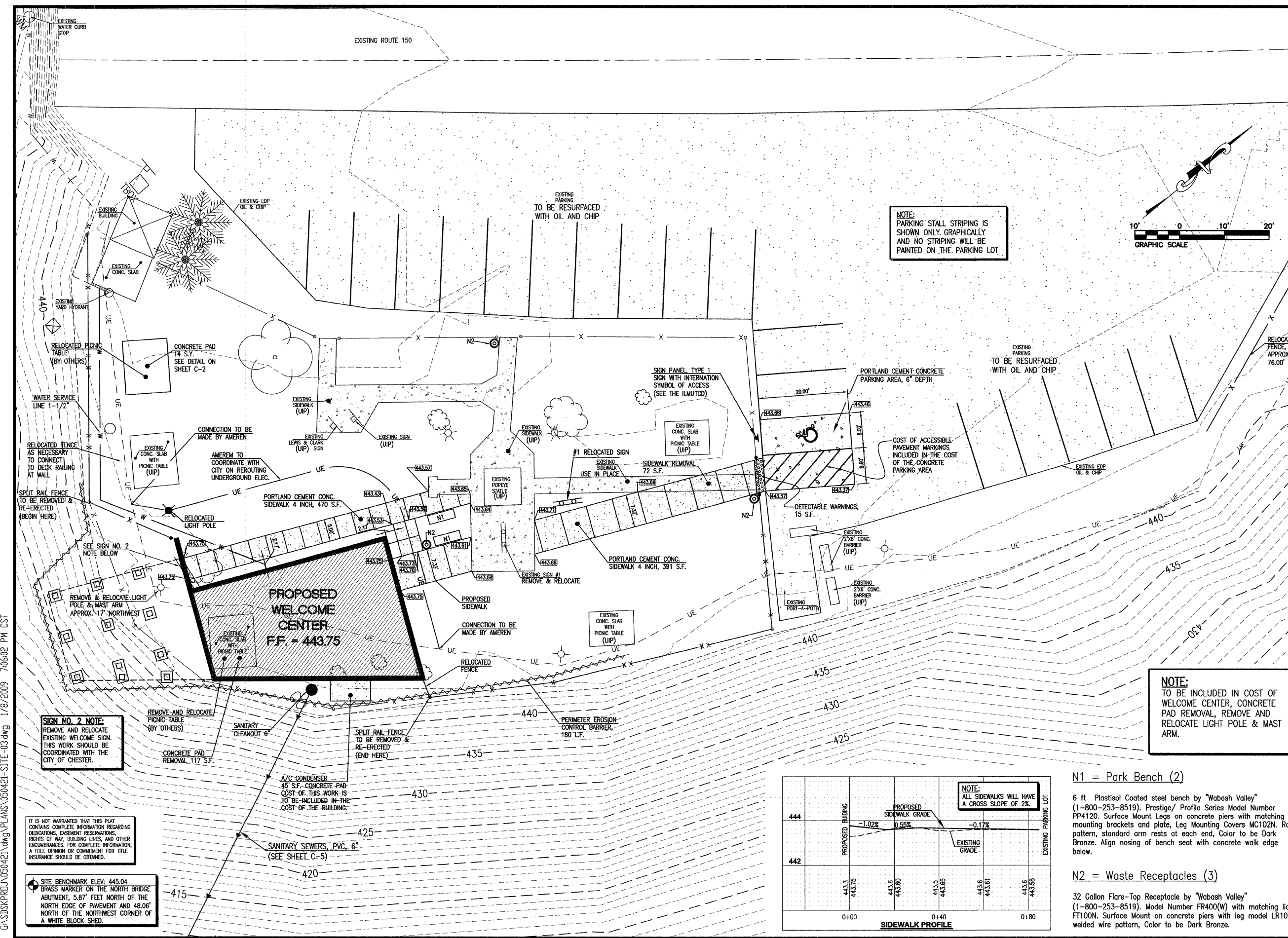
**CORPORATE OFFICE**  
4940 OLD COLLINSVILLE RD.  
SWANSEA, ILLINOIS 62226  
TEL (618) 624-4488  
FAX (618) 624-6688  
corp@twm-inc.com

**WATERLOO OFFICE**  
113 SOUTH MAIN STREET  
WATERLOO, ILLINOIS 62298  
TEL (618) 939-5050  
FAX (618) 939-3938  
waterloo@twm-inc.com

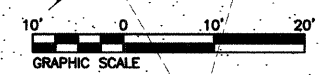
**ST. LOUIS OFFICE**  
1001 CRAIG ROAD, SUITE 260  
ST. LOUIS, MISSOURI 63146  
TEL (314) 236-5052  
FAX (314) 872-2194  
stlouis@twm-inc.com

PROFESSIONAL REGISTRATIONS	LICENSE NO.
ILLINOIS PROFESSIONAL DESIGN FIRM	184-011220
PROFESSIONAL ENGINEERING CORP.	02-005070
PROFESSIONAL STRUCTURAL ENGR. CORP.	81-005202
ILLINOIS PROF. LAND SURVEYING CORP.	048-000029
MISSOURI PROFESSIONAL ENGR. CORP.	NC 001528
MISSOURI LAND SURVEYING CORP.	NC 000346

SEAL  
Signature: \_\_\_\_\_  
Expiration Date: \_\_\_\_\_  
STATEMENT OF RESPONSIBILITY  
I hereby confirm that the document herein to be authenticated by my seal is restricted to this sheet, and I hereby disclaim any responsibility for all other drawings, specifications, estimates, reports or other documents or instruments relating to or intended to be utilized for any other part of the architectural, engineering or survey project.



**NOTE:**  
PARKING STALL STRIPING IS SHOWN ONLY GRAPHICALLY AND NO STRIPING WILL BE PAINTED ON THE PARKING LOT.

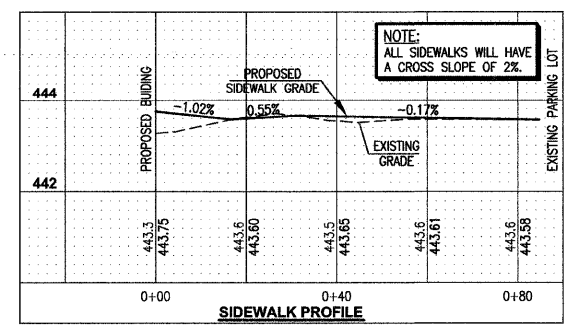


**NOTE:**  
TO BE INCLUDED IN COST OF WELCOME CENTER, CONCRETE PAD REMOVAL, REMOVE AND RELOCATE LIGHT POLE & MAST ARM.

**SIGN NO. 2 NOTE:**  
REMOVE AND RELOCATE EXISTING WELCOME SIGN. THIS WORK SHOULD BE COORDINATED WITH THE CITY OF CHESTER.

IT IS NOT WARRANTED THAT THIS PLAN CONTAINS COMPLETE INFORMATION REGARDING EASEMENTS, EASEMENT RESERVATIONS, RIGHTS OF WAY, BUILDING LINES, AND OTHER ENCUMBRANCES. FOR COMPLETE INFORMATION, A TITLE OPINION OR COMMITMENT FOR TITLE INSURANCE SHOULD BE OBTAINED.

**SITE BENCHMARK ELEV: 445.04**  
BRASS MARKER ON THE NORTH BRIDGE ABUTMENT, 5.87' FEET NORTH OF THE NORTH EDGE OF PAVEMENT AND 48.06' NORTH OF THE NORTHWEST CORNER OF A WHITE BLOCK SHED.



**N1 = Park Bench (2)**  
6 ft. Plastisol Coated steel bench by "Wabash Valley" (1-800-253-8519), Prestige/ Profile Series Model Number PP4120. Surface Mount Legs on concrete piers with matching mounting brackets and plate, Leg Mounting Covers MC102N. Rod pattern, standard arm rests at each end, Color to be Dark Bronze. Align nosing of bench seat with concrete walk edge below.

**N2 = Waste Receptacles (3)**  
32 Gallon Flare-Top Receptacle by "Wabash Valley" (1-800-253-8519), Model Number FR400(W) with matching lid FT100N. Surface Mount on concrete piers with leg model LR105, welded wire pattern, Color to be Dark Bronze.

**TITLE:** SITE AND GRADING PLAN  
**PROJECT:** CHESTER WELCOME CENTER CITY OF CHESTER RANDOLPH COUNTY, ILLINOIS

REV	DATE	DESCRIPTION
01	03/08	REVISIONS PER CITY OF CHESTER
02	12/16/08	REVISIONS PER I.D.O.T.
03	01/09/09	REVISIONS PER I.D.O.T.

CREATED ON: JANUARY 03, 2008  
DRAWN BY: KAK  
DESIGNED BY:  
CHECKED BY:  
APPROVED BY:  
PROJECT NUMBER: D33050421  
SHEET: C-4  
OF: SHEETS  
 ISSUED FOR REVIEW  RECORD DRAWING

G:\SDSK\PROJ\050421.dwg PLANS\050421-SITE-03.dwg 1/8/2009 7:06:02 PM CST