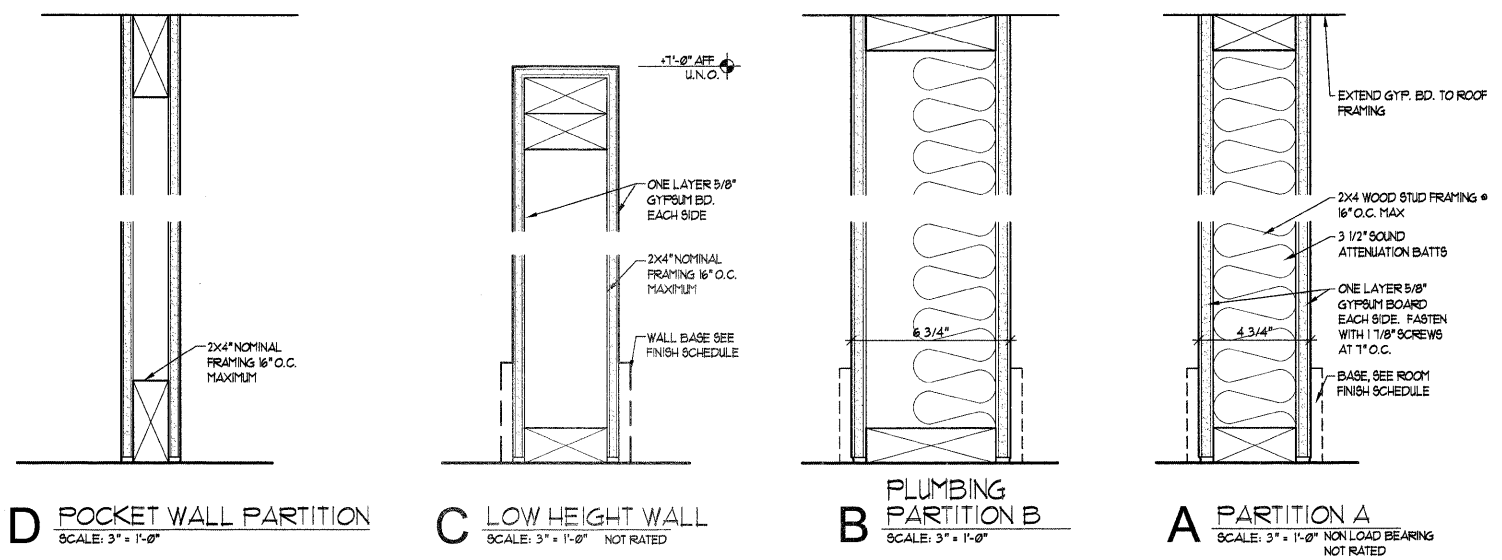


1. PROVIDE BLOCKING IN CLOSET WALLS FOR INSTALLATION OF ADJUSTABLE SHELVING AND STANDARDS FROM FLOOR TO 8'-0" AFF. PROVIDE ACCESSIBLE COAT ROD AND SHELVING IN EACH CLOSET.
3. ALL INTERIOR DIMENSIONS ARE TO FACE OF GYP. BD. UNLESS NOTED OTHERWISE.
4. ALL BATHROOMS OR TOILET ROOMS TO HAVE BLOCKING INSIDE WALLS TO SUPPORT GRAB BARS (CURRENT OR FUTURE) AND ACCESSORIES.
5. THE HEIGHT OF TABLES OR COUNTER TOPS SHALL BE FROM 28" TO 34" IN HEIGHT ABOVE THE FINISH FLOOR. IF SEATING IS PROVIDED AT TABLES OR COUNTERS, KNEE SPACE AT LEAST 21" HIGH, 30" WIDE AND 19" DEEP SHALL BE PROVIDED.
6. FIRE EXTINGUISHERS SHOWN ON PLAN ARE MINIMUM. VERIFY EXACT NUMBER AND LOCATION PER APPLICABLE CODES.

- PARTITION NOTES:**
1. PROVIDE HORIZONTAL FIRE STOPPING AS REQUIRED BY CODE
 2. CONNECT PARTITIONS TO FLOOR OR ROOF FRAMING ABOVE WITH METAL STUDS / STRUTS FOR UNSUPPORTED END WALLS AND WALLS WITH MORE THAN 12'-0" OF UNSUPPORTED LENGTH. PROVIDE BLOCKING BETWEEN FRAMING MEMBERS RUNNING PARALLEL TO PARTITIONS. LOCATE BLOCKING AT SAME SPACING AS PARTITION STUDS.
 3. PROVIDE CROSS BRACING @ ALL GYP. CEILING PANEL JOINTS
 4. PARTITION CONSTRUCTION INCLUDES ALL REQUIREMENTS OF THE U.L. OR GYPSUM ASSOCIATION ASSEMBLY NOTED FOR FIRE SEPARATION. FULL TEXT MAY BE REVIEWED AT ARCHITECT'S OFFICE.
 5. USE MOISTURE RESISTANT GYP. BD. AT ALL WET LOCATIONS AND PLUMBING WALLS
 6. CONTRACTOR MAY USE METAL STUDS IN PLACE OF WOOD STUDS AT THEIR OPTION.
 7. SEE WALL SECTIONS FOR SUB-CEILING AND BLOW-IN INSULATION NOTES.



D POCKET WALL PARTITION
SCALE: 3" = 1'-0"

C LOW HEIGHT WALL
SCALE: 3" = 1'-0" NOT RATED

B PLUMBING PARTITION B
SCALE: 3" = 1'-0"

A PARTITION A
SCALE: 3" = 1'-0" NON LOAD BEARING NOT RATED

LEGEND

	NEW CONSTRUCTION
	NEW POTTER-ROEMER #1022-B-16-VH
	SEMI-RECESSED CABINET W/ #3010 FIRE EXTINGUISHER

01.09.09	IDOT Submittal
Issued	description

ARCHITECTURAL FLOOR PLAN & PARTITION TYPES

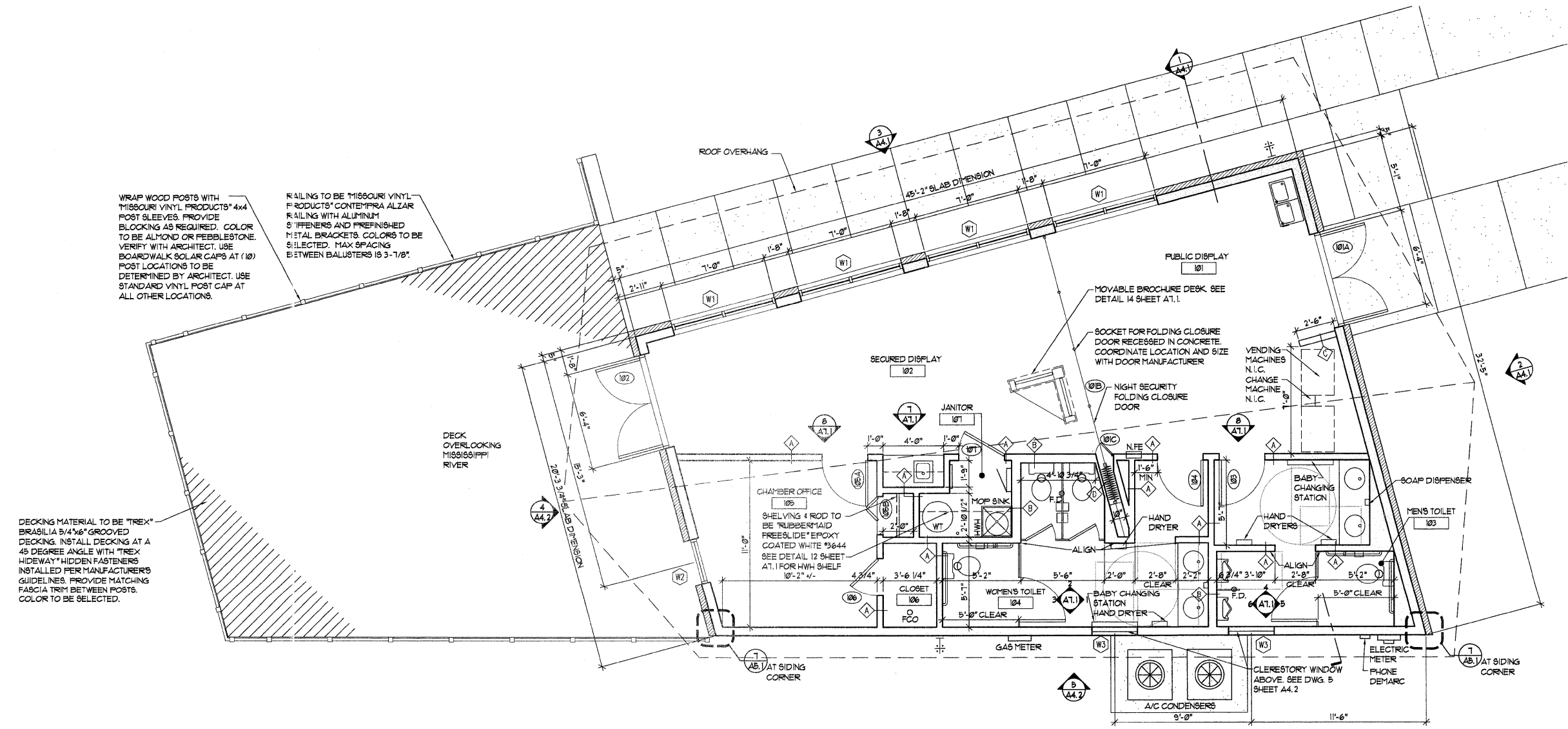
CHESTER WELCOME CENTER

Chester, Illinois

QUADRANT design
architects & planners

135 south main street
waterloo, illinois 62298
phone 618.939.0606

job number 10525
drawn by JE
checked by MGS
file name Welcome Center Plan
scale noted



WRAP WOOD POSTS WITH MISSOURI VINYL PRODUCTS' 4x4 POST SLEEVES. PROVIDE BLOCKING AS REQUIRED. COLOR TO BE ALMOND OR PEBBLESTONE. VERIFY WITH ARCHITECT. USE BOARDWALK SOLAR CAPS AT (10) POST LOCATIONS TO BE DETERMINED BY ARCHITECT. USE STANDARD VINYL POST CAP AT ALL OTHER LOCATIONS.

RAILING TO BE MISSOURI VINYL PRODUCTS' CONTEMPRA ALZAR RAILING WITH ALUMINUM 8" FINNERS AND PREFINISHED METAL BRACKETS. COLORS TO BE SELECTED. MAX SPACING BETWEEN BALUSTERS IS 3'-1/8".

DECKING MATERIAL TO BE TREX® BRASILIA 5/4x6" GROOVED DECKING. INSTALL DECKING AT A 45 DEGREE ANGLE WITH TREX® HIDEWAY® HIDDEN FASTENERS INSTALLED PER MANUFACTURER'S GUIDELINES. PROVIDE MATCHING FASCIA TRIM BETWEEN POSTS. COLOR TO BE SELECTED.

1 ARCHITECTURAL FLOOR PLAN
SCALE: 1/4" = 1'-0"
PROJECT NORTH TRUE NORTH 1/4"