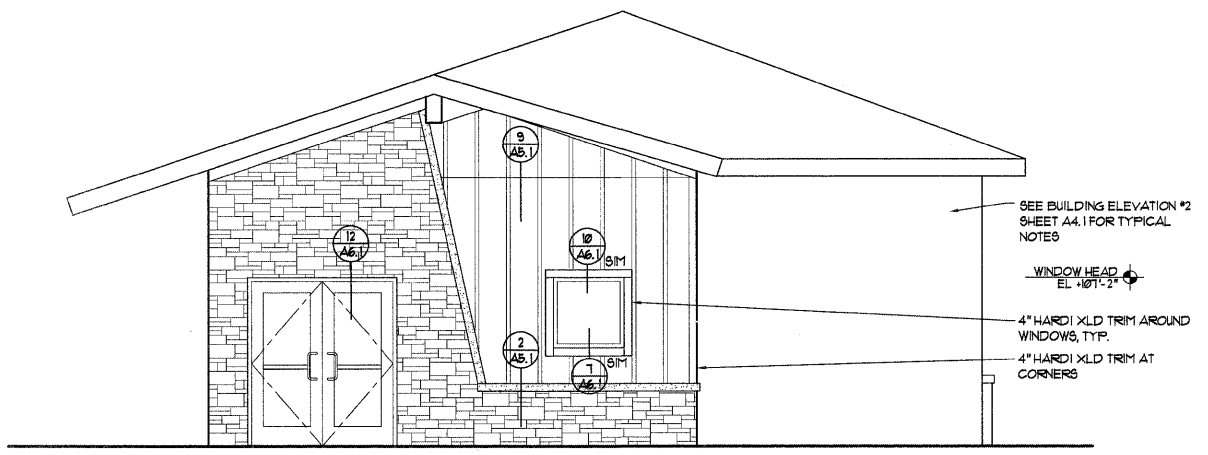


**5 EAST ELEVATION**  
SCALE: 1/4" = 1'-0"



**2 SOUTH ELEVATION**  
SCALE: 1/4" = 1'-0"

01.09.09	IDOT Submittal
Issued	Description

**BUILDING ELEVATIONS**

**CHESTER WELCOME CENTER**

Chester, Illinois



135 south main street  
waterloo, illinois 62298  
phone 618.939.0606

job number	20525
drawn by	JE
checked by	MS
file name	W. Center Elevations
scale	noted

sheet **A4.2**