

**LIGHT FIXTURE SCHEDULE**  
SUBMIT CUT SHEETS FOR VERIFICATION BEFORE ORDERING FIXTURES. TYPICAL

NOTE: SEE ELECTRICAL SYMBOL LEGEND FOR LIGHT SWITCH INFO

1. NO GENERAL NOTES ON THIS SHEET.

TYPE	SYMBOL	DESCRIPTION	MANUFACTURER	CATALOG NUMBER	LAMPS	REMARKS
A		2x4 RECESSED INDIRECT LAY-IN	HUBBELL LIGHTING-COLUMBIA LIGHTING	STR 2x4	ELECTRONIC BALLAST (2) 28W T5 LAMPS	
B		LINEAR HIGH ABUSE FLUORESCENT SURFACE MOUNT	KENALL-MILLENIUM STRETCH	MLHA126 SERIES	ELECTRONIC BALLAST (2) 28W T5 LAMPS	ROUNDED END CAPS, MATTE WHITE HOUSING FINISH, CLEAR POLYCARBONATE LENS. SEE LIGHTING PLAN FOR ROW LENGTHS
C		LINEAR FLUORESCENT PENDANT	HUBBELL LIGHTING-ALERA LIGHTING	CURY (CV)	ELECTRONIC BALLAST (2) 28W T5 LAMPS	PERFORATED HOUSING, 9C" SHALLOW CURV END CAP, ADJUSTABLE CABLE MOUNT AT EACH END OF ROW. ELECTRONIC BALLAST, LIGHT GREY FINISH RAL T035, SEE LIGHTING PLAN FOR ROW LENGTHS
D		TRACK LIGHTING	HUBBELL LIGHTING-FRESCOLITE ARCHITRAK	AKTGF38	40 W PAR 38 FRONT LOADING, WHITE FINISH	SEE PLAN FOR TRACK LENGTH, WHITE FINISH, PROVIDE 10 ADDITIONAL TRACK HEADS FOR 'ATTIC' STOCK
E		UTILITY FIXTURE	KICHLER	0102NI	(2) 13 W A19 BASE FLUORESCENT	
F		UNDER CABINET LIGHTING	KICHLER	XENON 1058055	(3) LIGHTS, 21.5"	
G		PENDANT CEILING FAN	HUNTER	THE ALLEGRO 28412	NO LAMPS	ADJUSTABLE PENDANT MOUNT, 52", WHITE HOUSING, ALL FAN 3 SPEED DIAL FAN CONTROL
H		EXTERIOR SLOPED CEILING DOWNLIGHT	HUBBELL LIGHTING-FRESCOLITE	SCIBX8	20 W A19 BASE FLUORESCENT	8" TRIM TO BE OPEN SLOPED SPECULAR CLEAR ALZAK REFLECTOR T9C8C
--		CEILING MOUNTED EXIT SIGN	HUBBELL LIGHTING-FRESCOLITE	PLEDS	L.E.D. RED	EXIT SIGN WITH WHITE PLASTIC ENCLOSURE WITH RED LED LIGHTS.
--		COMBINATION EXIT SIGN / EMERGENCY LIGHT	HUBBELL LIGHTING-FRESCOLITE	PEXHL-3-R-EC	L.E.D. RED EXIT & ADJUSTABLE 9.4 WATT INCANDESCENT LAMPHEADS	MOUNT AT 7'-6" AFF UNLESS NOTED OTHERWISE WHITE HOUSING FINISH
EF-1		EXHAUST FAN	BROAN-ULTRA SILENT SERIES	QXTE080	N/A	80 CFM, 3 SONES, 6" DUCTING. SEE NOTE M9 SHEET M1.1
EF-2		EXHAUST FAN	BROAN-ULTRA SILENT SERIES	QXTE150	N/A	150 CFM, 1.4 SONES, 6" DUCTING. SEE NOTE M9 SHEET M1.1
--		EMERGENCY LIGHTING BATTERY WALL PACK WITH WHITE ENCLOSURE	HUBBELL LIGHTING-FRESCOLITE	ELB4	1.2 W STANDARD INCANDESCENT LAMPS WITH REMOTE CAPABILITY, 6 OUTPUT BOLTS	BATTERY PACK TO MATCH EXIT SIGN

CAPITAL LETTERS ADJACENT TO SYMBOLS INDICATE FIXTURE TYPE. NUMBERS ADJACENT TO SYMBOLS INDICATE CIRCUIT NUMBER.

01.09.09	IDOT Submittal
issued	description

LIGHTING PLAN & NOTES

CHESTER WELCOME CENTER

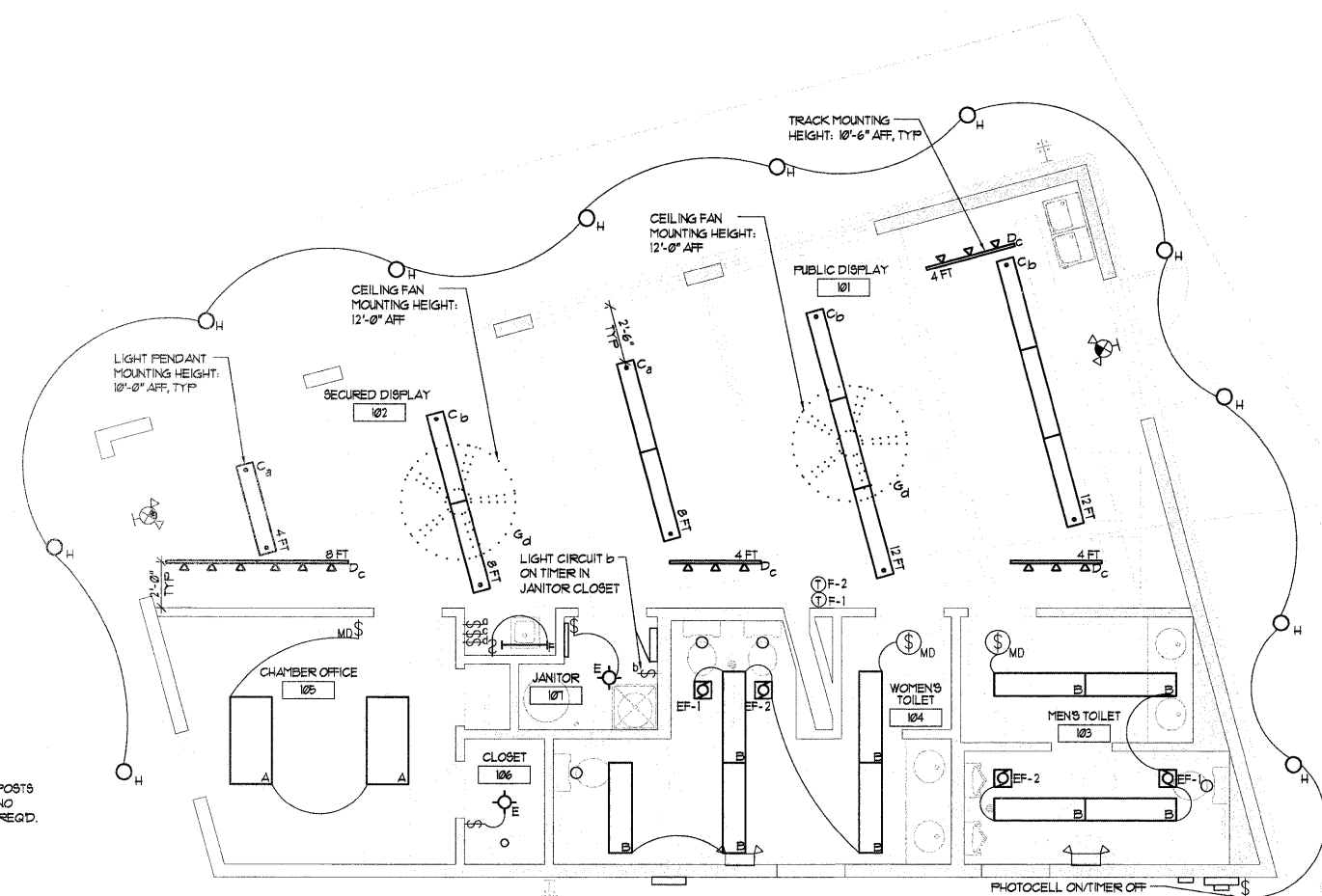
Chester, Illinois

**QUADRANT** design  
architects & planners

135 south main street  
waterloo, illinois 62298  
phone 618.939.0606

job number 20625  
drawn by JE  
checked by M6  
file name  
scale

sheet E2.1



NOTE: LIGHTS ON DECK POSTS ARE SOLAR POWERED. NO SWITCHING OR CIRCUITS REQ'D.

PHOTOCELL ON/TIMER OFF FOR EXTERIOR LIGHTING  
**1 LIGHTING PLAN**  
SCALE: 1/4" = 1'-0"  
PROJECT NORTH  
TRUE NORTH