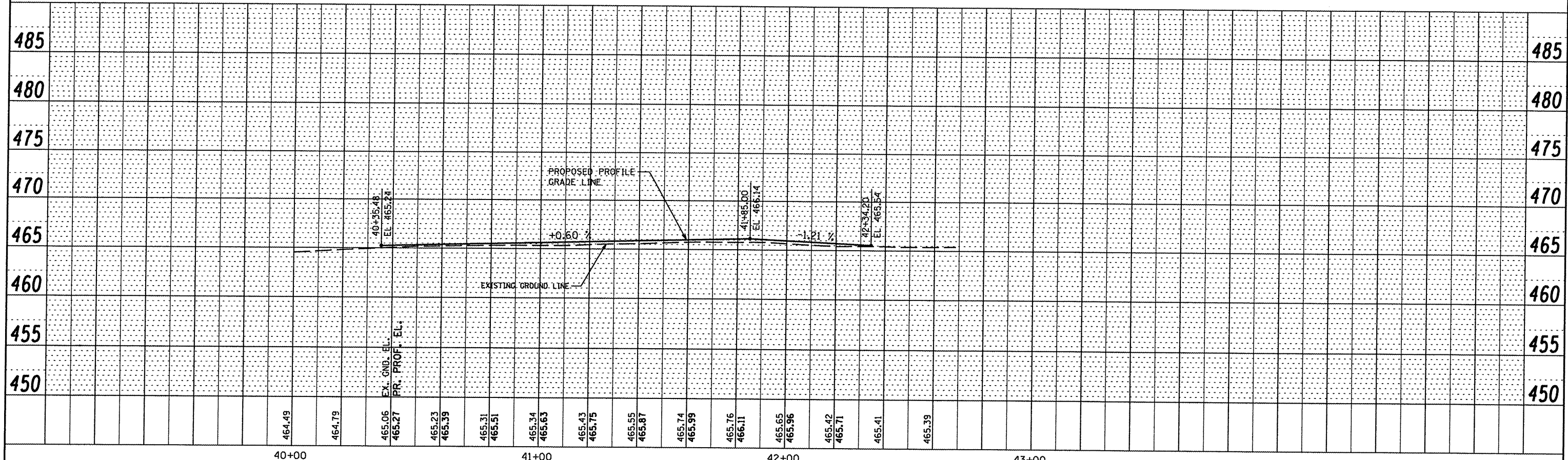


CURVE ACRD 1		CURVE ACRD 2	
P.I. STA=	40+44.66	P.I. STA=	40+89.61
Δ=	30°40'00"	Δ=	30°19'00"
D=	71°37'11"	D=	71°37'11"
R=	80.00'	R=	80.00'
T=	21.94'	T=	21.67'
L=	42.82'	L=	42.33'
E=	2.95'	E=	2.88'
P.C. STA=	40+22.73	P.C. STA=	40+67.94
P.T. STA=	40+65.55	P.T. STA=	41+10.27

OVERLAY QUANTITIES			
ITEM NO.	DESCRIPTION	UNIT	QUANTITY
AR152480	SHOULDER ADJUSTMENT	S.Y.	220
AR401610	BITUMINOUS SURFACE COURSE	TON	45
AR603510	BITUMINOUS TACK COAT	GAL.	54



PLAN	SURVEYED	BY	DATE
	PLOTTED		
	NOTE BOOK		
	NO. OF SHEETS		
	NO. OF SHEETS CHECKED		
	CADD FILE NAME		

PROFILE	SURVEYED	BY	DATE
	GRADES CHECKED		
	NOTE BOOK		
	NO.		
	STRUCTURE NOTATIONS CHECKED		

FILE NAME: P:\P\1899\Design\Plans\Plan & Profile Sheets.dgn

DATE	REVISION	GREATER BEARDSTOWN MUNICIPAL AIRPORT CITY OF BEARDSTOWN, BEARDSTOWN, ILLINOIS	FILENAME Plan & Profile Sheets.dgn PLOT SCALE 40.0000' / IN. DATE JANUARY 9, 2009 SHEET 10 OF 40 SHEETS	BENTON & ASSOCIATES, INC. 1970 W. LAFAYETTE AVE., JACKSONVILLE IL 62650 (217) 245-4146 (217) 245-4149 FAX KIRKSVILLE MISSOURI MACOMB ILLINOIS ST. LOUIS MISSOURI	ACCESS ROAD PLAN AND PROFILE ILL. PROJ. NO. K06-3749 A.I.P. PROJ. NO. 3-17-0004-B12
			LAYOUT MCM 04/08/08 DRAWN MCM 04/08/08 REVIEWED RHB 05/09/08		