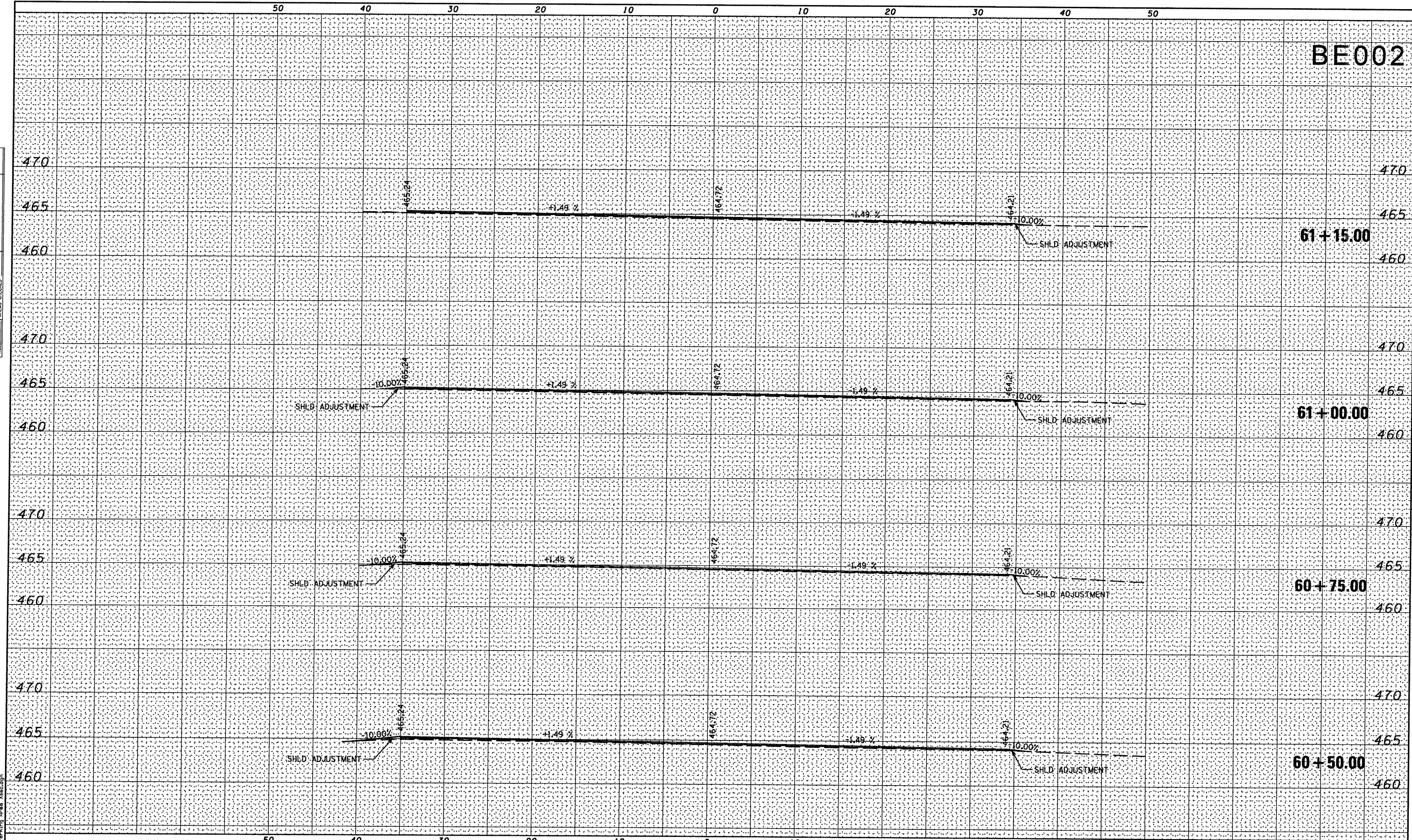


BE002

|              |               |    |      |
|--------------|---------------|----|------|
| FINAL SURVEY | SURVEYED      | BY | DATE |
| NOTE BOOK    | PLOTTED       |    |      |
| NO.          | TEMPLATE      |    |      |
|              | AREAS CHECKED |    |      |
|              | AREAS CHECKED |    |      |

|                 |               |    |      |
|-----------------|---------------|----|------|
| ORIGINAL SURVEY | SURVEYED      | BY | DATE |
| NOTE BOOK       | PLOTTED       |    |      |
| NO.             | TEMPLATE      |    |      |
|                 | AREAS CHECKED |    |      |
|                 | AREAS CHECKED |    |      |



FILE NAME = P:\2761899\Design\Drawings\Parking Area Xsec.dgn

| DATE | REVISION |
|------|----------|
|      |          |
|      |          |
|      |          |
|      |          |
|      |          |
|      |          |
|      |          |
|      |          |
|      |          |
|      |          |

GREATER BEARDSTOWN MUNICIPAL AIRPORT  
CITY OF BEARDSTOWN, BEARDSTOWN, ILLINOIS

|                       |                       |
|-----------------------|-----------------------|
| FILENAME              | Parking Area Xsec.dgn |
| PLOT SCALE            | 10.0000' / IN.        |
| DATE                  | JANUARY 9, 2009       |
| SHEET 39 OF 40 SHEETS |                       |
| LAYOUT                | MGM 04/28/08          |
| DRAWN                 | MGM 04/28/08          |
| REVIEWED              | RHB 05/06/08          |



BENTON & ASSOCIATES, INC.  
1970 W. LAFAYETTE AVE., JACKSONVILLE IL 62650  
(217) 245-4146 (217) 245-4149 FAX

KIRKSVILLE MISSOURI  
MACOMB ILLINOIS  
ST. LOUIS MISSOURI

CROSS SECTIONS - PARKING LOT  
STA. 60+50.00 TO STA. 61+15.00

ILL. PROJ. NO. K06-3749

A.I.P. PROJ. NO. 3-17-0004-B12