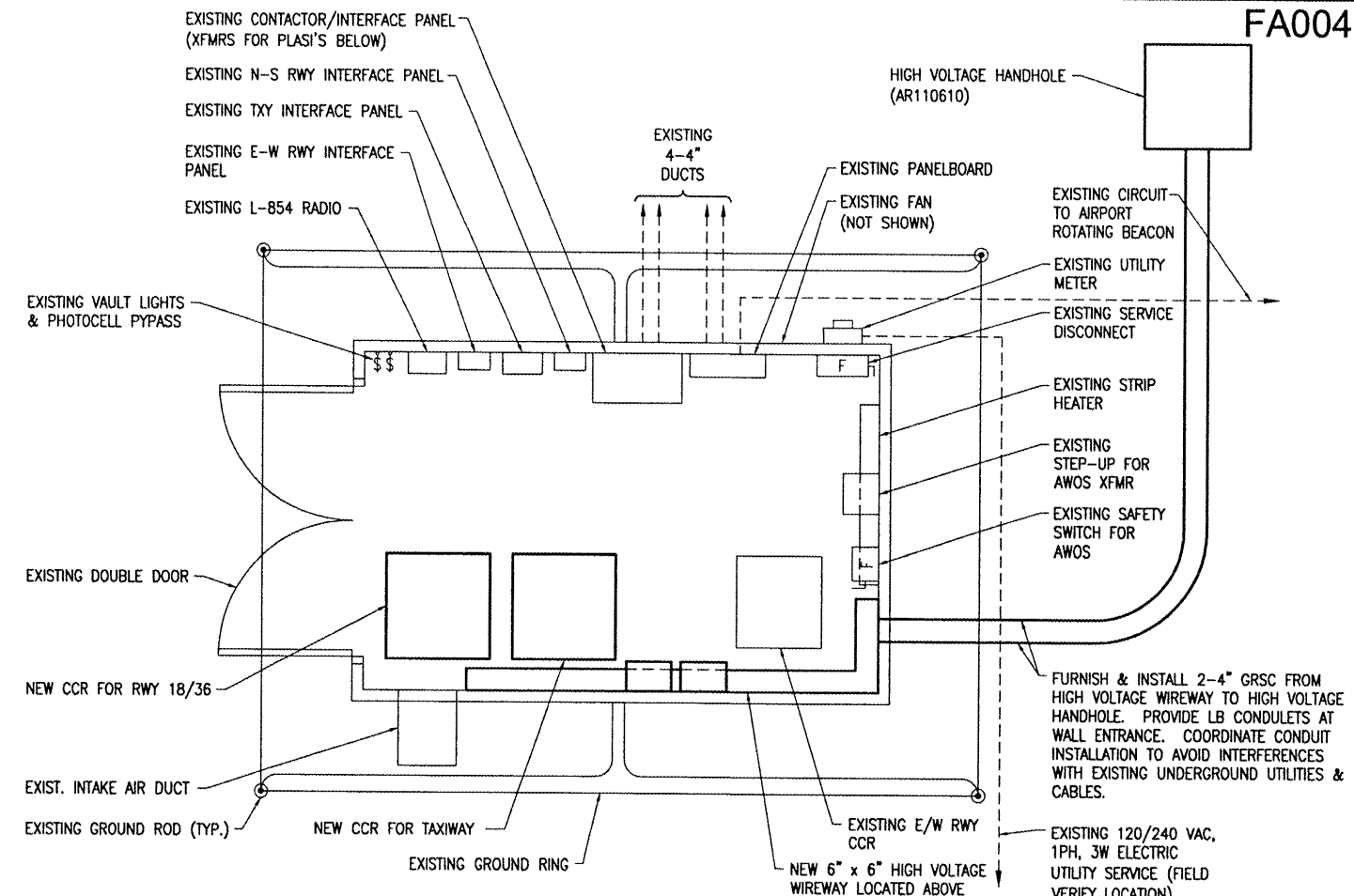
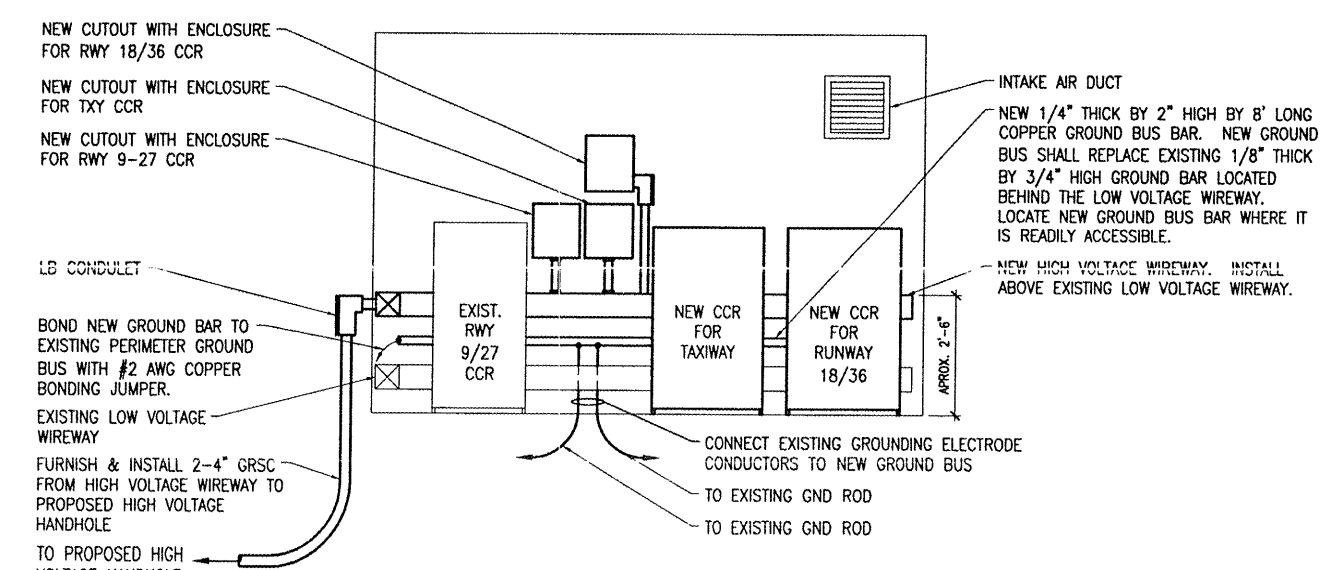


EXISTING FLOOR PLAN FOR VAULT
 0 1' 2' 4'
 HALF SIZE SCALE: 1/4" = 1'-0"
 FULL SIZE SCALE: 1/2" = 1'-0"



NEW FLOOR PLAN FOR VAULT
 0 1' 2' 4'
 HALF SIZE SCALE: 1/4" = 1'-0"
 FULL SIZE SCALE: 1/2" = 1'-0"



VAULT EAST ELEVATION
 0 1' 2' 4'
 HALF SIZE SCALE: 1/4" = 1'-0"
 FULL SIZE SCALE: 1/2" = 1'-0"

THE LOCATION, SIZE AND TYPE OF MATERIAL OF EXISTING UNDERGROUND UTILITIES INDICATED ON THE PLANS IS NOT REPRESENTED AS BEING ACCURATE, SUFFICIENT OR COMPLETE. IT SHALL BE THE CONTRACTOR'S RESPONSIBILITY TO DETERMINE THE ACTUAL LOCATION OF ALL SUCH FACILITIES, INCLUDING SERVICE CONNECTIONS TO UNDERGROUND UTILITIES. PRIOR TO CONSTRUCTION, THE CONTRACTOR SHALL NOTIFY THE UTILITY COMPANIES OF HIS OPERATIONAL PLANS AND SHALL OBTAIN FROM THE RESPECTIVE UTILITY COMPANIES DETAILED INFORMATION AND ASSISTANCE RELATIVE TO THE LOCATION OF THEIR FACILITIES AND THE WORKING SCHEDULE OF THE COMPANIES FOR REMOVAL OR ADJUSTMENT WHERE REQUIRED. IN THE EVENT AN UNEXPECTED UTILITY INTERFERENCE IS ENCOUNTERED DURING CONSTRUCTION, THE CONTRACTOR SHALL IMMEDIATELY NOTIFY THE UTILITY COMPANY OF JURISDICTION. THE ENGINEER SHALL ALSO BE IMMEDIATELY NOTIFIED. ANY SUCH MAINS AND SERVICES SHALL BE RESTORED TO SERVICE AT ONCE AND PAID FOR BY THE CONTRACTOR AT NO ADDITIONAL COST TO THE CONTRACT.

CALL J.U.L.I.E. FOR UTILITY INFORMATION 1-800-892-0123

- NOTES:**
- SEE "NEW ELECTRICAL ONE LINE DIAGRAM FOR VAULT" FOR LOW VOLTAGE INPUT POWER WIRING REQUIREMENTS TO RWY 18-36 CCR (CONSTANT CURRENT REGULATOR) & EAST-WEST TAXIWAY CCR. SEE "HIGH VOLTAGE WIRING SCHEMATIC" FOR CCR OUTPUT WIRING REQUIREMENTS. SEE "AIRFIELD LIGHTING WIRING SCHEMATIC" FOR CCR CONTROL WIRING REQUIREMENTS. PROVIDE 5 FEET MINIMUM CLEAR WORKING SPACE IN FRONT OF EACH CCR AND EACH SERIES PLUG CUTOUT.
 - CONSTANT CURRENT REGULATORS AND THEIR RESPECTIVE SERIES PLUG CUTOUTS SHALL BE CLEARLY LABELED TO IDENTIFY THE RESPECTIVE REGULATOR DESIGNATION, RUNWAY OR TAXIWAY SERVED, POWER SOURCE OR CIRCUIT, AND VOLTAGE SYSTEM.
 - BOND EACH WIREWAY TO VAULT GROUND BUS WITH #6 AWG COPPER BONDING JUMPER.
 - BOND EACH CCR FRAME/HOUSING TO VAULT GROUND BUS WITH #6 AWG COPPER BONDING JUMPER.
 - MAINTAIN SEPARATION OF HIGH VOLTAGE AND LOW VOLTAGE CIRCUITS. LOW VOLTAGE WIRING SHALL ENTER THE RESPECTIVE CCR AT THE LOW VOLTAGE SECTION. HIGH VOLTAGE WIRING SHALL ENTER THE RESPECTIVE CCR AT THE HIGH VOLTAGE SECTION.

FA004

BY	
REVISION	
DATE	

**FAIRFIELD MUNICIPAL AIRPORT
 FAIRFIELD, ILLINOIS**
 A.I.P. PROJ.: 3-17-0043-B10
 I.L. PROJ.: FWC-3829

Project No.	08A00730_0800
Filename	E-101.DWG
Scale	NONE
Date	10/10/08
LAYOUT	KNL 08/29/08
DRAWN	MV 08/29/08
REVIEWED	CAH 10/08/08



**REPLACE RUNWAY
 & TAXIWAY LIGHTING**
**VAULT FLOOR PLAN
 AND ELEVATIONS**

08/08/2009 1:49 PM HAGL000382
 I:\AIRPORTS\FAIRFIELD\08A00730\AIRPORT\08A00730\08A00730_0800\08A00730_0800.DWG - Work