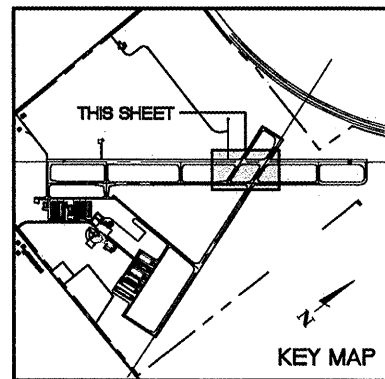
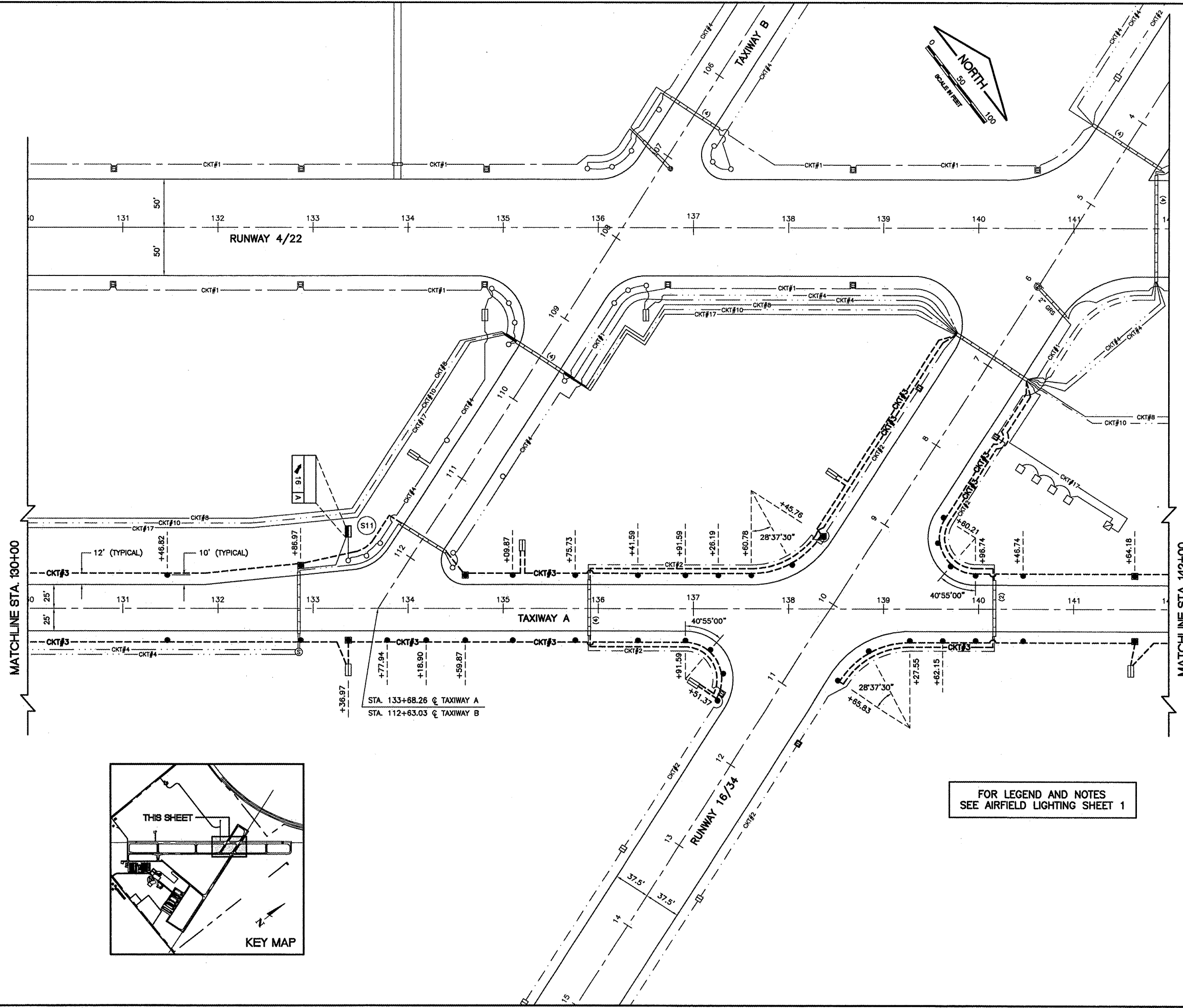


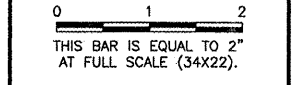
IMAGE FILES



KA038

K:\Kankakee\0807508 Lighting Ph.2\Draw\Sheets
 FILE: Lighting-04.dwg
 LAYOUT: Layout1
 UPDATE BY: Jim Ohse
 SURVEY BOOK #
 DATE: Thursday, January 15, 2009 11:22:22 AM
 XREF DWG: tbclnt.dwg
 tb.dwg
 elec-base.dwg

| REVISIONS | | |
|-----------|----|------|
| NUMBER | BY | DATE |
| | | |
| | | |
| | | |



**GREATER KANKAKEE AIRPORT
 KANKAKEE, ILLINOIS
 REHABILITATE AIRFIELD LIGHTING SYSTEM -
 RUNWAY 4/22 PARALLEL AND CONNECTING TAXIWAYS**

**AIRFIELD LIGHTING PLAN
 STA. 130+00 TO STA. 142+00**

© Copyright CMT, Inc.
CMT
 CRAWFORD, MURPHY & TILLY, INC.
 CONSULTING ENGINEERS
 License No. 184-000618

| | |
|------------------------|---------------|
| DESIGN BY: | MND |
| DRAWN BY: | JRO |
| CHECKED BY: | MND |
| APPROVED BY: | |
| DATE: | 01/16/09 |
| JOB No: | 08075-06 |
| IL PROJECT: | IKK-3863 |
| A.I.P. PROJECT: | 3-17-0057-B15 |
| FINAL SUBMITTAL | |
| SHEET 15 OF 20 SHEETS | |