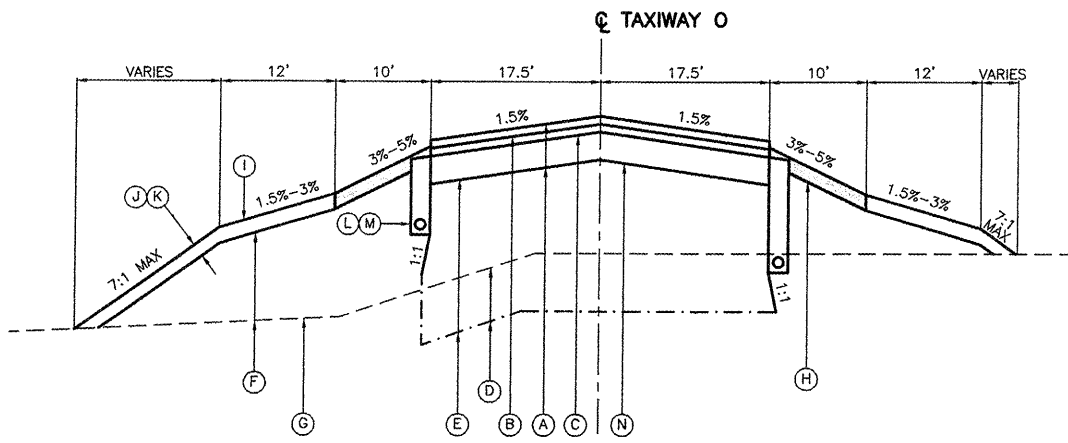
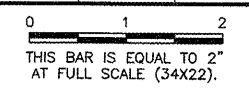


LEGEND

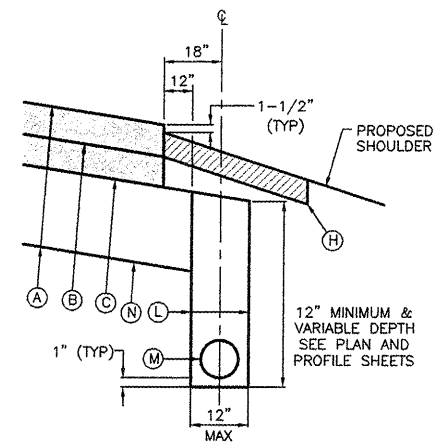
- (A) NEW 2" BITUMINOUS SURFACE COURSE (401)
- (B) NEW 2" BITUMINOUS BASE COURSE (201)
- (C) NEW 7" CRUSHED AGGREGATE BASE COURSE (209)
- (D) NEW TACK COAT (603)
- (E) NEW PRIME COAT (602)
- (F) PROPOSED 6" (AVG.) TOPSOIL STRIPPING (152)
- (G) PROPOSED EMBANKMENT FILL (152)
- (H) PROPOSED SHOULDER FILL (152)
- (I) EXISTING GROUND LINE
- (J) NEW 10' WIDE SOIL GUARD
- (K) PROPOSED GROUND LINE
- (L) PROPOSED TOPSOIL PLACEMENT (4" DEPTH) (905)
- (M) PROPOSED SEEDING AND MULCHING (901 AND 908)
- (N) PROPOSED POROUS BACKFILL (705)
- (O) NEW 6" CPPUP WITH SOCK (705)
- (P) NEW SOIL STABILIZATION FABRIC
- (Q) NEW 10" P.C.C. PAVEMENT (501)
- (R) NEW 6" CRUSHED AGGREGATE BASE COURSE (209)
- (S) NEW 12" POROUS GRANULAR EMBANKMENT (208)
- (T) PROPOSED UNCLASSIFIED EXCAVATION

REVISIONS

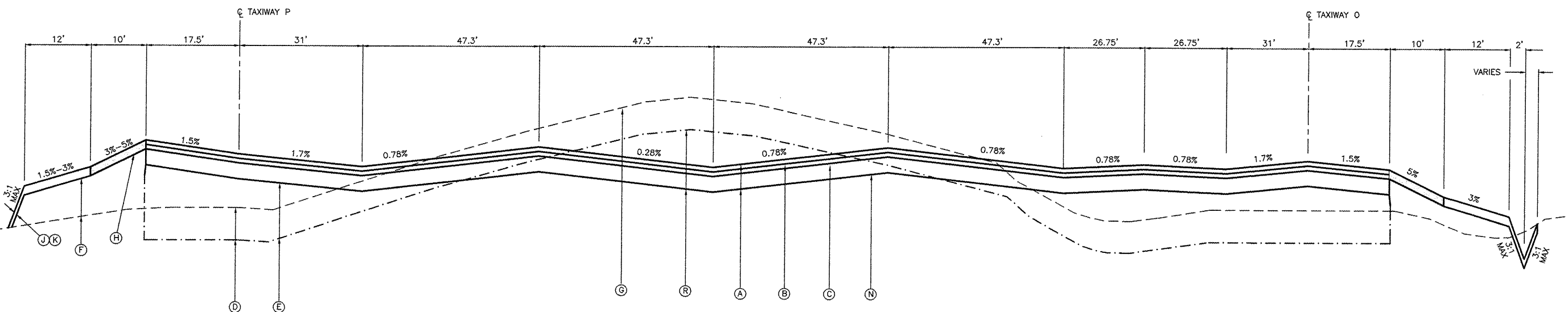
NUMBER	BY	DATE



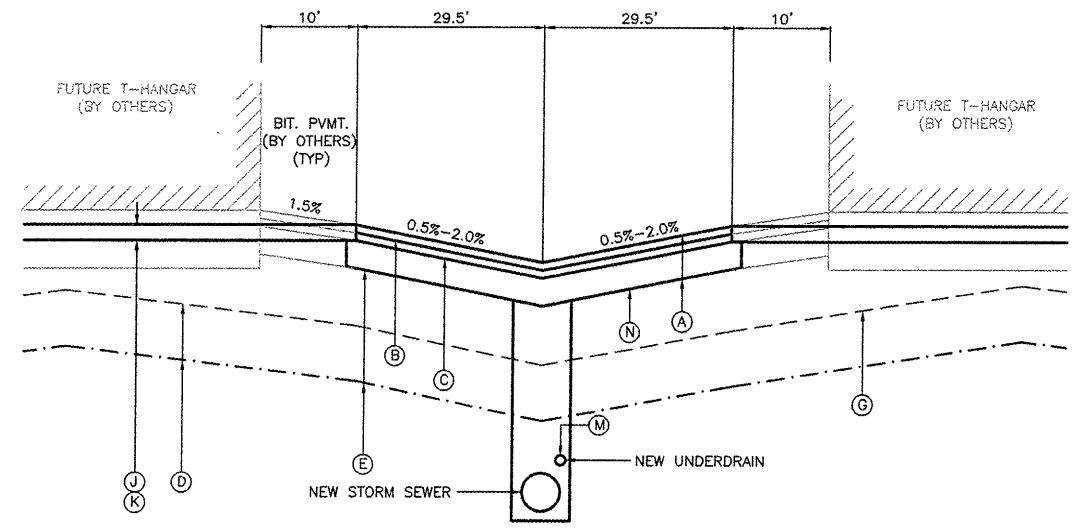
TAXIWAY TYPICAL SECTION A-A
NOT TO SCALE



UNDERDRAIN DETAIL
EDGE OF BITUMINOUS PAVEMENT AREAS
NOT TO SCALE



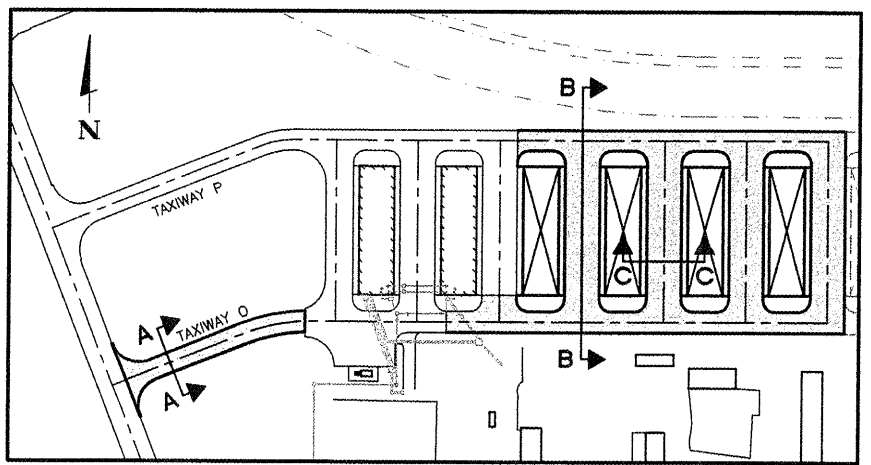
TAXIWAY TYPICAL SECTION B-B
NOT TO SCALE



TAXIWAY TYPICAL SECTION C-C
NOT TO SCALE

NOTES

- CONSTRUCT CRUSHED AGGREGATE BASE COURSE 1'-0" OUTSIDE EDGE OF PAVEMENT.



KEY MAP

CHICAGO EXECUTIVE AIRPORT
WHEELING/PROSPECT HEIGHTS, ILLINOIS

TYPICAL SECTIONS
NORTHEAST QUADRANT

© Copyright CMT, Inc.
CMT
 CRAWFORD, MURPHY & TULLY, INC.
 CONSULTING ENGINEERS
 License No. 64-000618



DESIGN BY:	MLK
DRAWN BY:	JRO
CHECKED BY:	
APPROVED BY:	
DATE:	11/21/08
JOB No:	06290-07
ILLINOIS PROJECT:	PWK-3613
A.I.P. PROJECT:	3-17-0018-B39
SHEET	11 OF 40 SHEETS