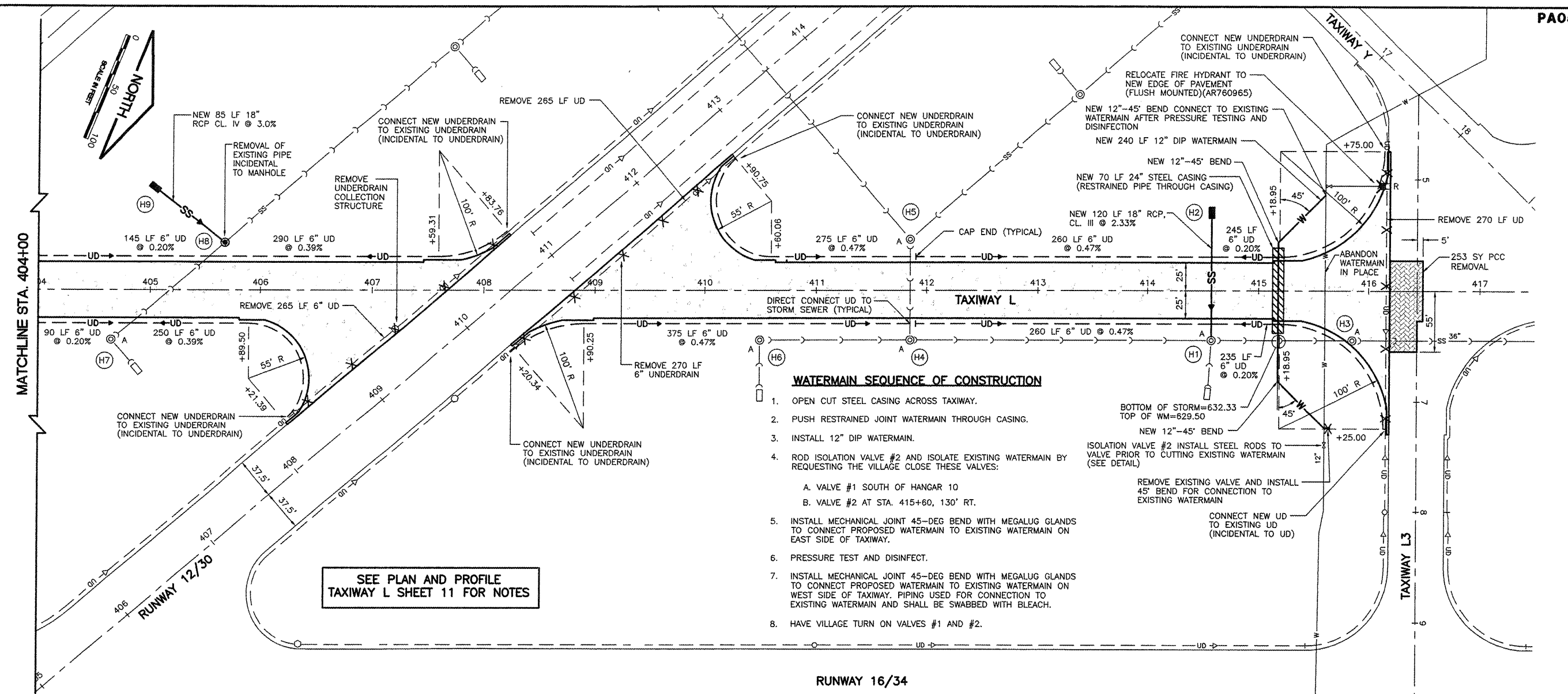
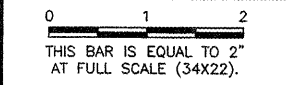


K:\Pawka\0629007 Extend Trx L\Draw\Sheets\FILE: txy-pp2.dwg
 LAYOUT: Layout1
 UPDATE BY: mkatz
 SURVEY BOOK #
 DATE: Fri 6/30/06 8:14am
 XREF DWG: tbcInL.dwg
 tb.dwg
 tbrpfgrd.dwg
 rcrpf002.dwg
 taxiway-base.dwg

REVISIONS		
NUMBER	BY	DATE

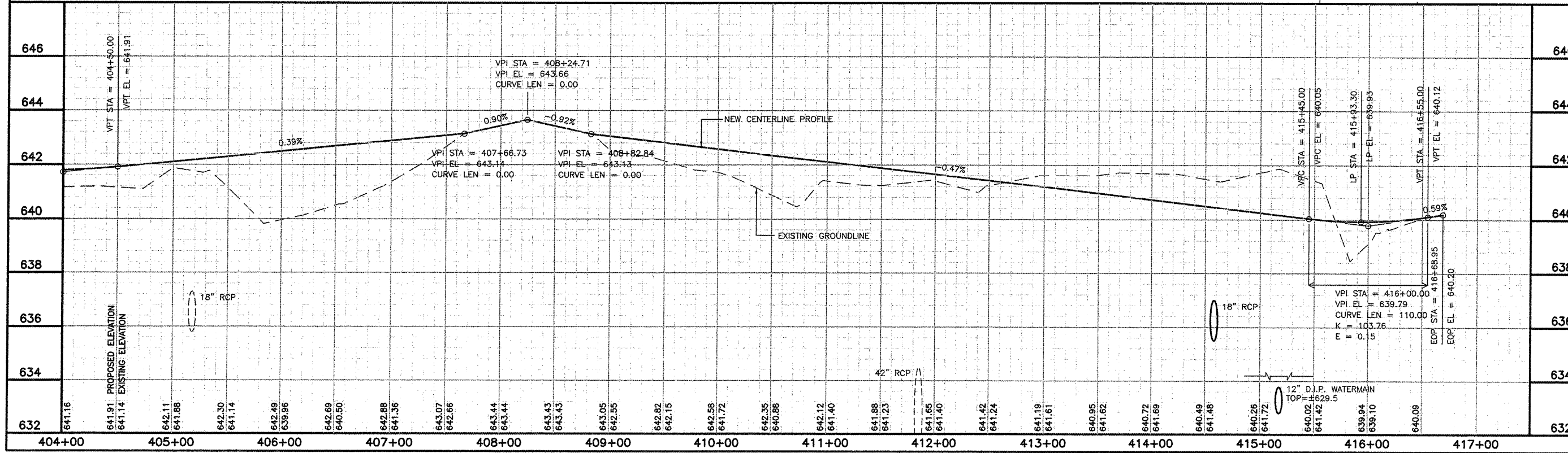


WATERMAIN SEQUENCE OF CONSTRUCTION

1. OPEN CUT STEEL CASING ACROSS TAXIWAY.
2. PUSH RESTRAINED JOINT WATERMAIN THROUGH CASING.
3. INSTALL 12" DIP WATERMAIN.
4. ROD ISOLATION VALVE #2 AND ISOLATE EXISTING WATERMAIN BY REQUESTING THE VILLAGE CLOSE THESE VALVES:
 A. VALVE #1 SOUTH OF HANGAR 10
 B. VALVE #2 AT STA. 415+60, 130' RT.
5. INSTALL MECHANICAL JOINT 45-DEG BEND WITH MEGALUG GLANDS TO CONNECT PROPOSED WATERMAIN TO EXISTING WATERMAIN ON EAST SIDE OF TAXIWAY.
6. PRESSURE TEST AND DISINFECT.
7. INSTALL MECHANICAL JOINT 45-DEG BEND WITH MEGALUG GLANDS TO CONNECT PROPOSED WATERMAIN TO EXISTING WATERMAIN ON WEST SIDE OF TAXIWAY. PIPING USED FOR CONNECTION TO EXISTING WATERMAIN AND SHALL BE SWABBED WITH BLEACH.
8. HAVE VILLAGE TURN ON VALVES #1 AND #2.

SEE PLAN AND PROFILE TAXIWAY L SHEET 11 FOR NOTES

CHICAGO EXECUTIVE AIRPORT
 WHEELING/PROSPECT HEIGHTS, ILLINOIS
 PLAN AND PROFILE
 TAXIWAY L
 STA. 404+00 TO STA. 417+00



© Copyright CMT, Inc.

CMT
 CRANFORD, MURPHY & TILLY, INC.
 CONSULTING ENGINEERS
 License No. 184-000613

CHICAGO EXECUTIVE AIRPORT

DESIGN BY:	
DRAWN BY:	
CHECKED BY:	
APPROVED BY:	
DATE:	11/21/08
JOB No:	06290-07
ILLINOIS PROJECT:	PWK-3613
A.I.P. PROJECT:	3-17-0018-B39
SHEET	13 OF 40 SHEETS