

K:\Pawakeep\062907 Extend Txy L\Draw\Sheets\
FILE: txy-lighting-2.dwg
LAYOUT: Layout1
UPDATE BY: mkatz
SURVEY BOOK #
DATE: Wed 11/19/08 2:32pm
XREF DWG: tbcint.dwg
tb.dwg
taxiway-base.dwg

LEGEND

- EXISTING BASE/STAKE MOUNTED MEDIUM INTENSITY TAXIWAY LIGHT
EXISTING BASE/STAKE MOUNTED/IN-PAVEMENT HIGH INTENSITY RUNWAY LIGHT
EXISTING AIRFIELD GUIDANCE SIGN
EXISTING CONDUIT/DUCT BANK
EXISTING ELECTRIC/STORM/SANITARY MANHOLE/WATER VALVE VAULT
EXISTING ELECTRIC HANDHOLE
EXISTING RUNWAY 16/34 CIRCUIT
EXISTING RUNWAY 6/24 CIRCUIT
EXISTING TAXIWAY G AND D CIRCUIT
EXISTING TAXIWAY D,L,M,N,Y AND 2 CIRCUIT
EXISTING TAXIWAY A,B,E AND F CIRCUIT
EXISTING REIL CABLES
EXISTING FAA CABLES
EXISTING RUNWAY GUARD LIGHT CIRCUIT
EXISTING RUNWAY DISTANCE REMAINING CIRCUIT
EXISTING RUNWAY 6 PAPI CIRCUIT (3 #4 XLP-USE, 1 #8 GND. IN 2" PVC CONDUIT 1-6 PAIR #18 SHIELDED IN 2" PVC W/ BARE COUNTERPOISE)
EXISTING RUNWAY 12 REIL CIRCUIT (2 #4 XLP-USE, 1 #8 GND. IN 2" PVC CONDUIT)
NEW RUNWAY 12 REIL CIRCUIT (2 #4 XLP-USE, 1 #8 GND. IN 2" PVC CONDUIT)
EXISTING RUNWAY 12 PAPI CIRCUIT (3 #4 XLP-USE, 1 #8 GND. IN 2" PVC CONDUIT 1-6 PAIR #18 SHIELDED IN 2" PVC W/ BARE COUNTERPOISE)
NEW BASE MOUNTED MEDIUM INTENSITY QUARTZ TAXIWAY LIGHT
NEW BASE/IN-PAVEMENT QUARTZ RUNWAY LIGHT - A - AMBER LENSE
W - WHITE LENSE
NEW AIRFIELD GUIDANCE SIGN
NEW SPLICE CAN
NEW ELECTRIC HANDHOLE
NEW CONDUIT/DUCT BANK
NEW RUNWAY 12/30 CIRCUIT
NEW RUNWAY 6/24 CIRCUIT
NEW TAXIWAY D,L AND Y CIRCUIT
NEW RUNWAY GUARD LIGHT CIRCUIT
NEW 1/C #8, 5KV, L-B24, TYPE C CABLE IN 2" PVC CONDUIT, DIRECT BURIED
NUMBER OF TICK MARKS INDICATE NUMBER OF CABLES (TYPICAL FOR ALL AIRFIELD LIGHTING CIRCUITS)
ITEM TO BE REMOVED

NOTES

- 1. ALL EXISTING TAXIWAY AND RUNWAY AIRFIELD LIGHTING CIRCUITS, FAA CABLES AND OTHER AIRPORT ELECTRICAL CABLES SHALL REMAIN IN SERVICE UNTIL REPLACED AS DIRECTED BY THE ENGINEER. ALL TEMPORARY CABLEING AND SPLICING SHALL BE CONSIDERED INCIDENTAL TO THE CONTRACT.
2. AT ANY LOCATION WHERE THE PROPOSED DUCT OR CABLE ROUTE CROSSES AN EXISTING UTILITY, THE CONTRACTOR SHALL HAND DIG AND LOCATE THE EXISTING UTILITY PRIOR TO TRENCHING. COST OF LOCATING ALL EXISTING UTILITIES SHALL BE INCIDENTAL TO THE CONTRACT.
3. THE LOCATION OF EXISTING UTILITIES ARE APPROXIMATE. THE CONTRACTOR SHALL OPEN THE ENTIRE TRENCH BETWEEN MANHOLES BEFORE ANY CONDUIT IS LAID TO ASCERTAIN THE EXISTENCE AND POSITION OF ANY OBSTRUCTIONS.
4. CONTRACTOR SHALL COORDINATE THE LOCATION OF THE EXISTING AND PROPOSED UTILITIES PRIOR TO INSTALLATION OF THE PROPOSED UNIT DUCTS, CONDUITS AND DUCT BANKS. ANY DAMAGES TO EXISTING UTILITIES SHALL BE REPAIRED IMMEDIATELY AT THE CONTRACTOR'S EXPENSE.
5. CONTRACTOR SHALL PROVIDE PULL WIRE FOR ALL DUCT BANKS AND CAP THE UNUSED DUCT BANKS FOR FUTURE USE.
6. CONTRACTOR SHALL CONNECT EXISTING CABLE TO PROPOSED CABLE IN SIGN/LIGHT/MANHOLE/HANDHOLE/SPLICE CAN. COST OF CONNECTION INCIDENTAL TO CABLE.
7. NO 90 DEGREE BENDS WILL BE ALLOWED IN CONDUIT.
8. CONTRACTOR SHALL CORE HOLES INTO EXISTING MANHOLES/HANDHOLES. THE COST OF CORING AND GROUTING SHALL BE INCIDENTAL TO THE INSTALLATION OF THE PROPOSED CABLE.
9. ALL LIGHTS AND SIGNS SHALL HAVE QUARTZ BULBS.
10. AT EXISTING DUCT BANKS THAT FALL WITHIN THE PROPOSED P.C.C. PAVEMENT, THE CONTRACTOR SHALL STAMP THE DUCT LOCATION, AS DIRECTED BY THE ENGINEER, IN THE PROPOSED P.C.C..
11. SPLICE EXISTING 600V CABLES TO NEW 600V CABLES WITH WATERPROOF SPLICE. COST OF SPLICES SHALL BE INCIDENTAL TO CABLE.

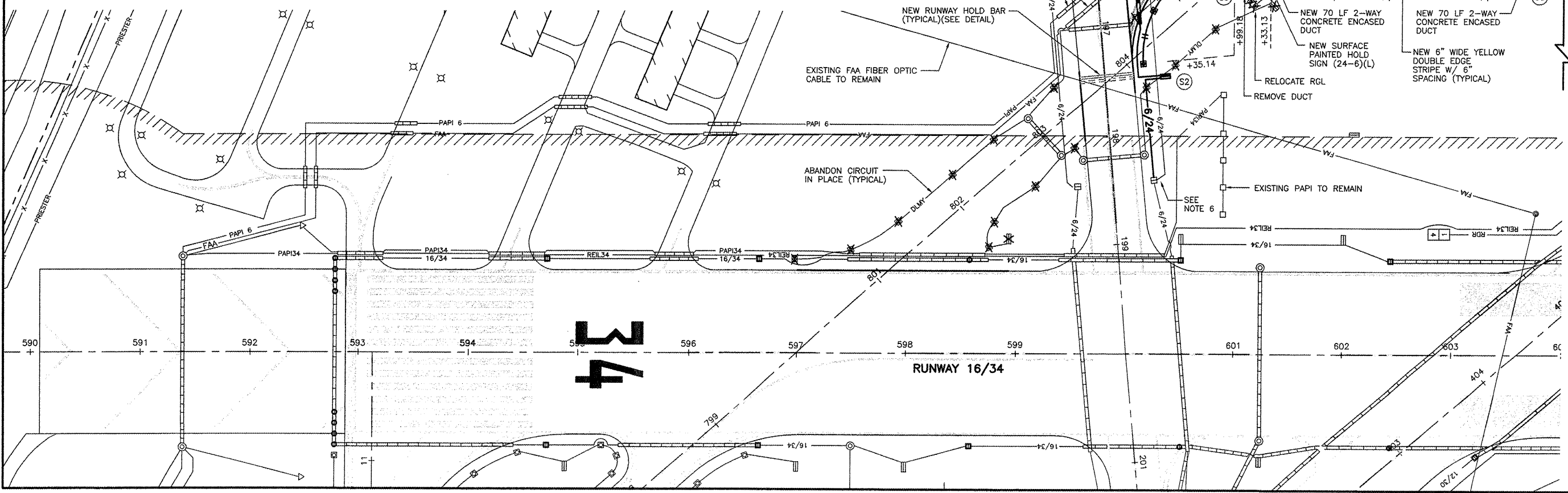
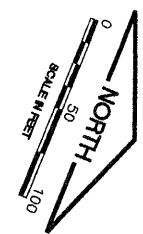


Table with 3 columns: NUMBER, BY, DATE. Title: REVISIONS

0 1 2
THIS BAR IS EQUAL TO 2" AT FULL SCALE (34X22).

CHICAGO EXECUTIVE AIRPORT
WHEELING/PROSPECT HEIGHTS, ILLINOIS
LIGHTING AND PAVEMENT MARKING PLAN
TAXIWAY L
STA. 399+00 TO STA. 404+00
MATCHLINE STA. 404+00

CMT logo and contact information for CRAWFORD, MURPHY & TILLY, INC. CONSULTING ENGINEERS. License No. 184-000613

Table with project details: DESIGN BY: MJS, DRAWN BY: JRO, CHECKED BY: AB, APPROVED BY: (blank), DATE: 11/21/08, JOB No: 06290-07, ILLINOIS PROJECT: PWK-3613, A.I.P. PROJECT: 3-17-0018-B39, SHEET 26 OF 40 SHEETS