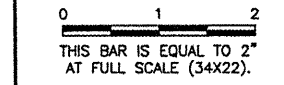


K:\Danville\0504203 Taxiway Extension\Draw\Sheets  
 FILE: 08\_PLANPRO-REVISED.dwg  
 LAYOUT: PLANPRO  
 UPDATE BY: dallan  
 SURVEY BOOK #  
 DATE: Mon 1/5/09 4:27pm  
 XREF DWG: rcrpf001.dwg  
 DonVEPBase.DWG  
 DNV-EXISTBASE-1.dwg  
 CIntinfo.dwg  
 BASE\_PROPGE0.dwg

REVISIONS		
NUMBER	BY	DATE



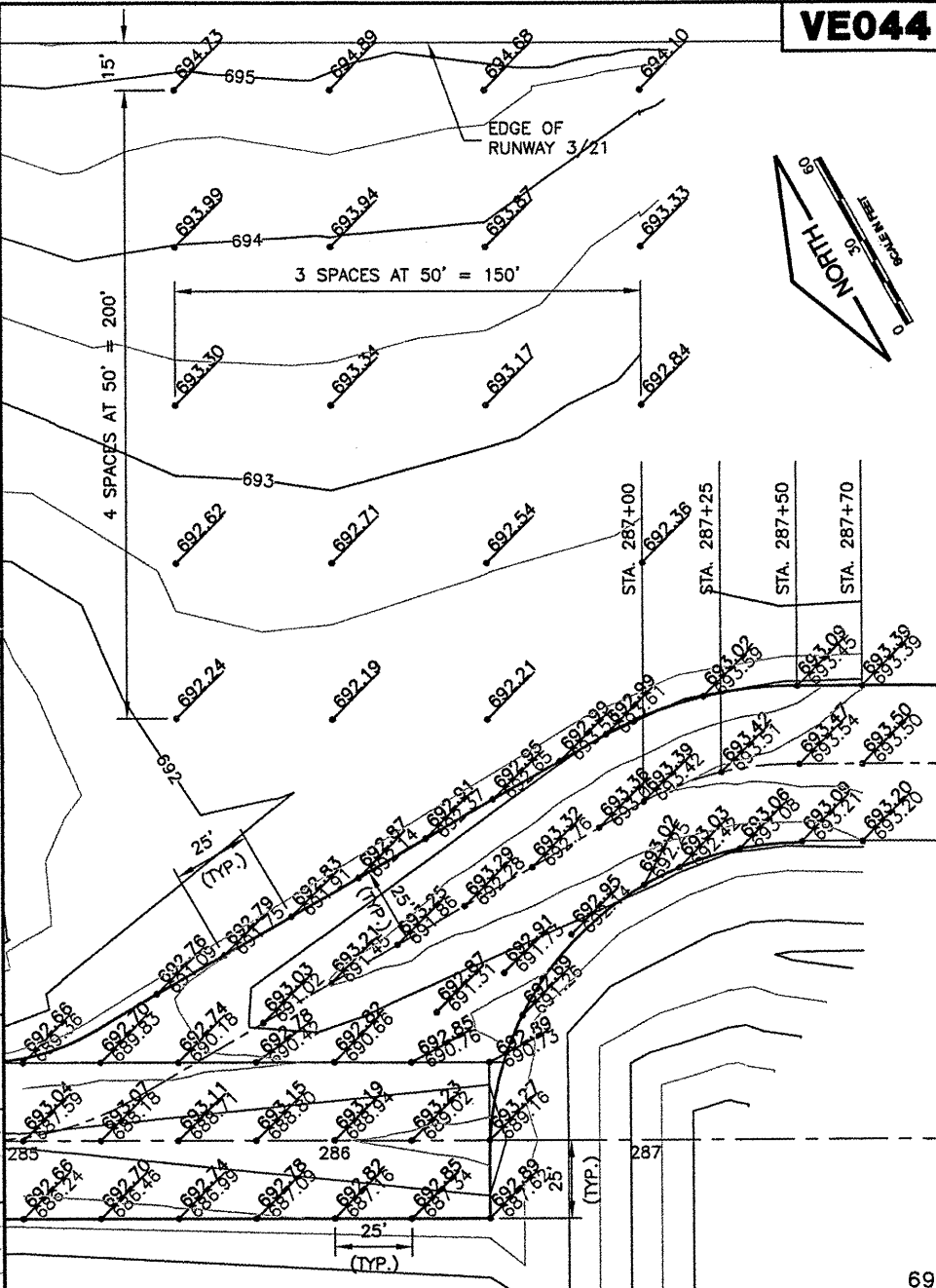
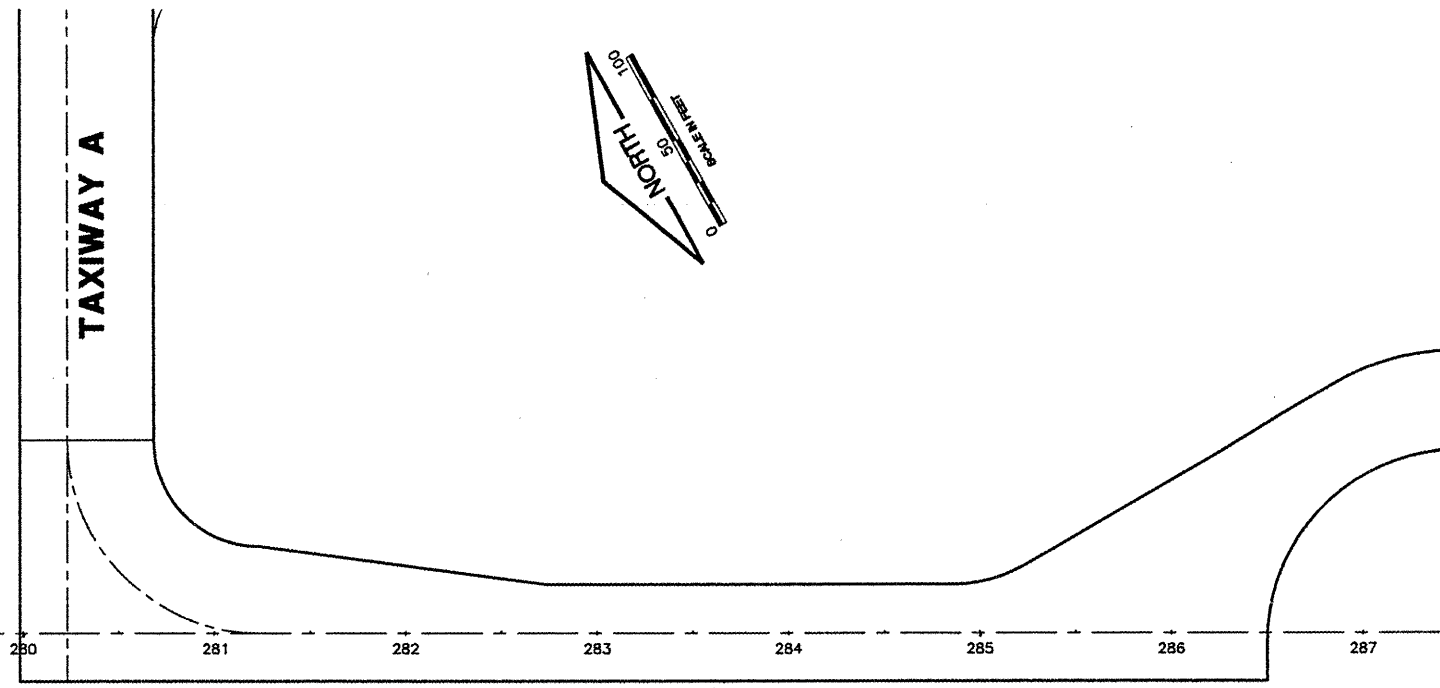
**VERMILION COUNTY AIRPORT  
 DANVILLE, ILLINOIS**

**EXTEND PARALLEL TAXIWAY 600 FEET  
 TAXIWAY A PLAN & PROFILE  
 STA. 279+00 TO STA. 287+00**

© Copyright CMT, Inc.

**CMT**  
 CRAWFORD MURPHY & TILLY, INC.  
 CONSULTING ENGINEERS  
 License No. 184-000813

DESIGN BY:	CBG
DRAWN BY:	DPA
CHECKED BY:	JEF
APPROVED BY:	JEF
DATE:	01/09/2009
JOB No:	05042-0300
ILLINOIS PROJECT DNV-3537	
A.I.P. PROJECT 3-17-0032-B10	
SHEET	08 OF 26 SHEETS



**LEGEND**

- NEW ELEVATION
- EXISTING ELEVATION
- NEW CONTOURS

SCALES:  
 1" = 50' HOR  
 1" = 2' VER

