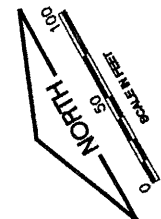


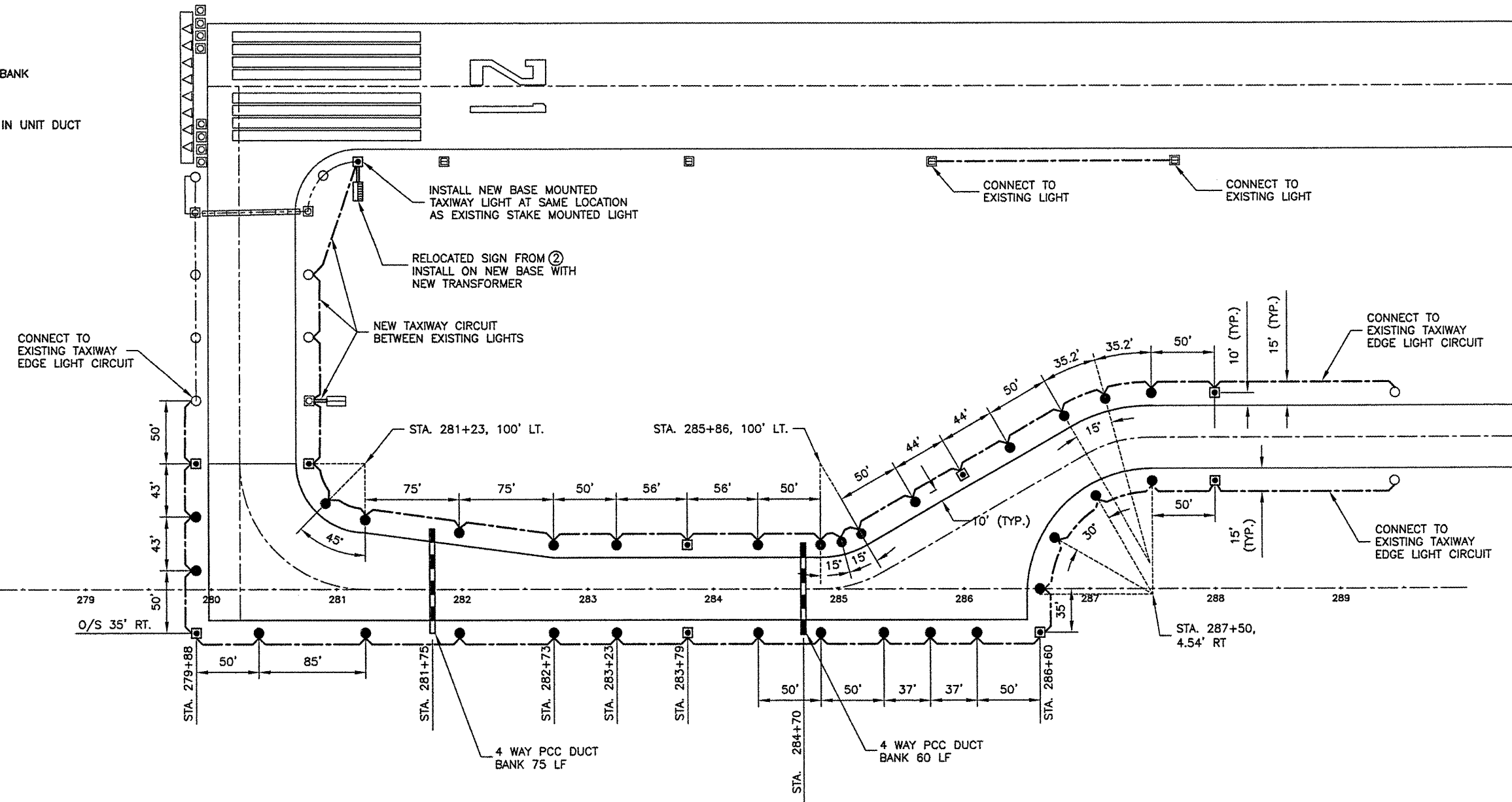
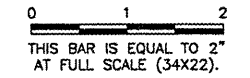
K:\Danville\0504203 Taxiway Extension\Draw\Sheets  
 FILE: 13\_ELECPLAN-REVISED.dwg  
 LAYOUT: ELECPLAN  
 UPDATE BY: dallen  
 SURVEY BOOK #  
 DATE: Mon 1/5/09 4:36pm  
 XREF DWG: C:\ntinfo.dwg  
 DNV-EXISTBASE-1.dwg  
 BASE\_PROPELEC-1.dwg  
 BASE\_PROPGEO-REVISED.dwg

LEGEND

- EXISTING STAKE MOUNTED RUNWAY LIGHT
- EXISTING STAKE MOUNTED TAXIWAY LIGHT
- NEW STAKE MOUNTED TAXIWAY LIGHT
- EXISTING BASE MOUNTED RUNWAY LIGHT
- EXISTING BASE MOUNTED TAXIWAY LIGHT
- NEW BASE MOUNTED TAXIWAY LIGHT
- EXISTING AIRFIELD SIGNAGE
- NEW AIRFIELD SIGNAGE
- RELOCATED AIRFIELD SIGN
- EXISTING SPLICE CAN
- EXISTING DUCT BANK
- NEW 4 WAY P.C.C. DUCT BANK
- EXISTING CABLE
- NEW 1/C #8 5KV CABLE IN UNIT DUCT



REVISIONS		
NUMBER	BY	DATE



**VERMILLION COUNTY AIRPORT  
 DANVILLE, ILLINOIS  
 EXTEND PARALLEL TAXIWAY 600 FEET  
 ELECTRICAL & LIGHTING PLAN**

© Copyright CMT, Inc.  
**CMT**  
 CRANFORD, MURPHY & TILLY, INC.  
 CONSULTING ENGINEERS  
 License No. 184-000619

DESIGN BY:	JEF
DRAWN BY:	DPA
CHECKED BY:	JEF
APPROVED BY:	JEF
DATE:	01/09/2009
JOB No:	05042-0300
ILLINOIS PROJECT DNV-3537	
A.I.P. PROJECT 3-17-0032-B10	
SHEET 13 OF 28 SHEETS	