

PROPOSED HIGHWAY PLANS

F.A.P. ROUTE 623 (US ROUTE 6)

SECTION (33 BR-2)T

DRAINAGE AND MISCELLANEOUS REPAIRS

LASALLE COUNTY

C-93-006-15

F.A.P. RTE.	SECTION	COUNTY	TOTAL SHEETS	SHEET NO.
623	(33BR-2)T	LASALLE	25	1
		ILLINOIS	CONTRACT NO. 66E26	

INDEX OF SHEETS

1. COVER SHEET
2. GENERAL NOTES
- 3-7. SUMMARY OF QUANTITIES
8. TYPICAL SECTIONS
- 9-10. SCHEDULES
11. STAGING DETAILS FOR STANDARD 701502
12. PAVEMENT MARKING
13. GENERAL SITE PLAN
14. DRAINAGE, SIDEWALK, PARAPET, CURB AND GUTTER REMOVAL DETAILS
- 15-16. SIDEWALK WITH PARAPET WALL/CURB AND GUTTER RECONSTRUCTION DETAILS
17. DRAINAGE RECONSTRUCTION DETAILS
18. FRAME AND GRATE, TYPE 11 (MODIFIED)
19. ALUMINUM HANDRAIL DETAILS
20. HOT-MIX ASPHALT RESURFACING DETAILS
- 21-22. EMBANKMENT CLEARING AND EROSION REPAIR DETAILS
- 23-24. STEEL BIN-TYPE RETAINING WALL - FOR INFORMATION ONLY

STANDARDS

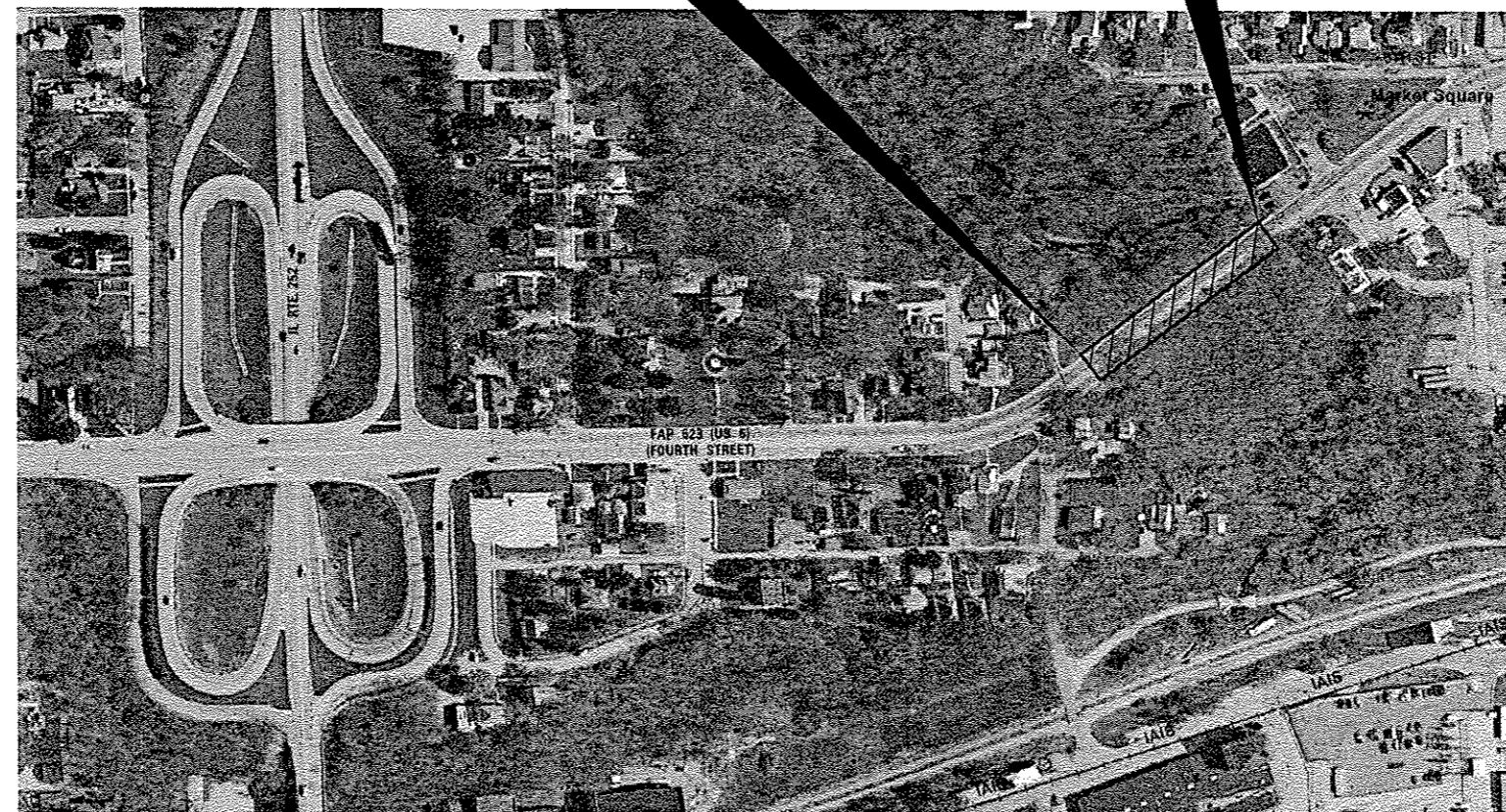
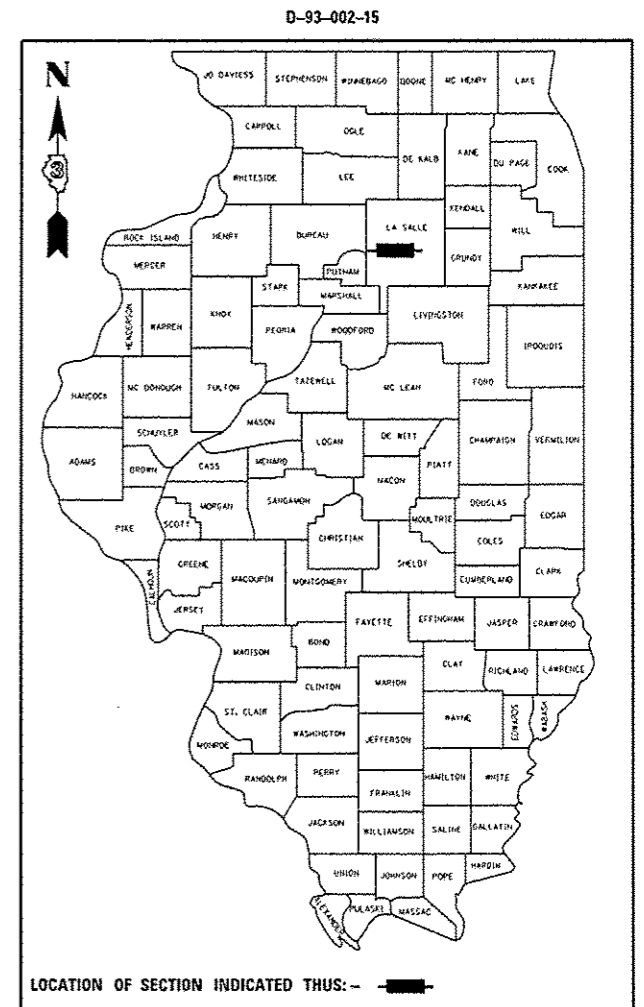
- | | |
|-----------|--|
| 000001-06 | STANDARD SYMBOLS, ABBREVIATIONS AND PATTERNS |
| 001001-02 | AREAS OF REINFORCEMENT BARS |
| 001006 | DECIMAL OF AN INCH AND OF A FOOT |
| 420001-08 | PAVEMENT JOINTS |
| 442101-07 | CLASS B PATCHES |
| 602401-03 | MANHOLE, TYPE A |
| 602701-02 | MANHOLE STEPS |
| 604061-07 | FRAME AND GRATE, TYPE 11 |
| 606001-06 | CONCRETE CURB TYPE B AND COMBINATION CONCRETE CURB AND GUTTER |
| 701001-02 | OFF-ROAD OPERATIONS 2L, 2W, MORE THAN 15' (4.5 m) AWAY |
| 701006-05 | OFF-ROAD OPERATIONS 2L, 2W, 15' (4.5 m) TO 24" (600 mm) FROM PAVEMENT EDGE |
| 701201-04 | LANE CLOSURE, 2L, 2W, DAY ONLY, FOR SPEEDS ≥ 45 MPH |
| 701301-04 | LANE CLOSURE, 2L, 2W, SHORT TIME OPERATIONS |
| 701502-06 | URBAN LANE CLOSURE 2L, 2W, WITH BIDIRECTIONAL LEFT TURN LANE |
| 701801-05 | SIDEWALK, CORNER OR CROSSWALK CLOSURE |
| 701901-04 | TRAFFIC CONTROL DEVICES |
| 781001-03 | TYPICAL APPLICATIONS RAISED REFLECTIVE PAVEMENT MARKERS |

BEGIN IMPROVEMENT

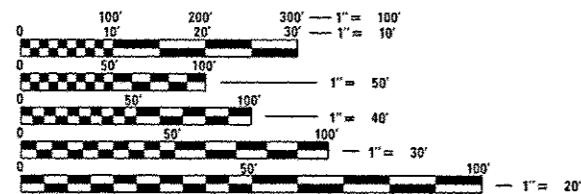
+/- 1400 FEET EAST OF
IL ROUTE 251 (STA. 229 + 54)

END IMPROVEMENT

+/- 1750 FEET EAST OF
IL ROUTE 251 (STA. 234 + 64)



POINT LOCATION



FULL SIZE PLANS HAVE BEEN PREPARED USING STANDARD ENGINEERING SCALES. REDUCED SIZED PLANS WILL NOT CONFORM TO STANDARD SCALES. IN MAKING MEASUREMENTS ON REDUCED PLANS, THE ABOVE SCALES MAY BE USED.

J.U.L.I.E.
JOINT UTILITY LOCATION INFORMATION FOR EXCAVATION
1-800-892-0123
OR 811

PROJECT ENGINEER; JOE KANNEL P.E.
UNIT CHIEF; RON WOODSHANK
TOWNSHIP: PERU
CONTRACT NO. 66E26

STATE OF ILLINOIS
DEPARTMENT OF TRANSPORTATION
DIVISION OF HIGHWAYS

SUBMITTED 12-12 20 14

Paul Coetaris
DEPUTY DIRECTOR OF HIGHWAYS, REGION ENGINEER

Jan 30 2015
Don D. Baranec P.E.
ENGINEER OF DESIGN AND ENVIRONMENT

Jan 30 2015
Omer Osman P.E.
DIRECTOR OF HIGHWAYS, CHIEF ENGINEER

PRINTED BY THE AUTHORITY OF THE STATE OF ILLINOIS

CODE NO.	ITEM	UNIT	TOTAL QUANTITY	CONSTR. CODE
				CONT. MAINT. 100% STATE
				ROADWAY 0044 URBAN
20200100	EARTH EXCAVATION	CU YD	500	500
20400800	FURNISHED EXCAVATION	CU YD	1400	1400
20800150	TRENCH BACKFILL	CU YD	163	163
25000300	SEEDING, CLASS 3	ACRE	0.11	0.11
25000400	NITROGEN FERTILIZER NUTRIENT	POUND	11	11
25000500	PHOSPHORUS FERTILIZER NUTRIENT	POUND	11	11
25000600	POTASSIUM FERTILIZER NUTRIENT	POUND	11	11
25100900	TURF REINFORCEMENT MAT	SQ YD	528	528
40600275	BITUMINOUS MATERIALS (PRIME COAT)	POUND	1096	1096
40600400	MIXTURE FOR CRACKS, JOINTS, AND FLANGEWAYS	TON	2	2
40600535	LEVELING BINDER (HAND METHOD), N70	TON	2	2
40600635	LEVELING BINDER (MACHINE METHOD), N70	TON	138	138
40603340	HOT-MIX ASPHALT SURFACE COURSE, MIX "D", N70	TON	138	138
44000161	HOT-MIX ASPHALT SURFACE REMOVAL, 3"	SQ YD	1622	1622

14

FILE NAME :	USER NAME : woodshankr1	DESIGNED - RW	REVISED -
ca:\pw\work\pwidot\woodshankr1\d0405789	0266E26-shr-detailed.dgn	DRAWN - RW	REVISED -
#MODELNAME#	PLOT SCALE = 1/8" = 1' / in.	CHECKED - HA	REVISED -
	PLOT DATE = 12/8/2014	DATE -	REVISED -

STATE OF ILLINOIS
DEPARTMENT OF TRANSPORTATION

SUMMARY OF QUANTITIES

F.A.P. RTE. 623	SECTION (53BR-2)T	COUNTY LASALLE	TOTAL SHEETS 25	SHEET NO. 3
SCALE: _____		SHEET 1 OF 5 SHEETS		STA. TO STA.
ILLINOIS FED. AID PROJECT CONTRACT NO. 66E26				

CODE NO.	ITEM	UNIT	TOTAL QUANTITY	CONSTR. CODE	
				CONT. MAINT.	100% STATE
				ROADWAY	
				0044	
				URBAN	
44000500	COMBINATION CURB AND GUTTER REMOVAL	FOOT	710		710
44200970	CLASS B PATCHES, TYPE II, 10 INCH	SO YD	61		61
44200976	CLASS B PATCHES, TYPE IV, 10 INCH	SO YD	42		42
44201007	CLASS B PATCHES, TYPE II, 13 INCH	SO YD	13		13
44201011	CLASS B PATCHES, TYPE III, 13 INCH	SO YD	23		23
44201298	DOWEL BARS 1 1/4"	EACH	168		168
44201299	DOWEL BARS 1 1/2"	EACH	72		72
44213200	SAW CUTS	FOOT	705		705
44300200	STRIP REFLECTIVE CRACK CONTROL TREATMENT	FOOT	1795		1795
50800205	REINFORCEMENT BARS, EPOXY COATED	POUND	8712		8712
50900105	ALUMINUM RAILING, TYPE L	FOOT	350		350
54248510	CONCRETE COLLAR	CU YD	0.5		0.5
54390090	INSERTION CULVERT LINER 12"	FOOT	238		238
550A0050	STORM SEWERS, CLASS A, TYPE 1 12"	FOOT	303		303

14

CODE NO.	ITEM	UNIT	TOTAL QUANTITY	CONSTR. CODE
				CONT. MAINT.
				100% STATE
				ROADWAY
				0044
				URBAN
55100300	STORM SEWER REMOVAL 8"	FOOT	72	72
55100500	STORM SEWER REMOVAL 12"	FOOT	121	121
60222900	MANHOLES, TYPE A, 5' -DIAMETER	EACH	1	1
60238800	INLETS, TYPE A	EACH	6	6
60500040	REMOVING MANHOLES	EACH	2	2
60500060	REMOVING INLETS	EACH	7	7
67100100	MOBILIZATION	L SUM	1	1
70100450	TRAFFIC CONTROL AND PROTECTION, STANDARD 701201	L SUM	1	1
70102622	TRAFFIC CONTROL AND PROTECTION, STANDARD 701502	L SUM	1	1
70102640	TRAFFIC CONTROL AND PROTECTION, STANDARD 701801	L SUM	1	1
70106800	CHANGEABLE MESSAGE SIGN	CAL MO	2	2
78000100	THERMOPLASTIC PAVEMENT MARKING - LETTERS AND SYMBOLS	SQ FT	63	63
78000200	THERMOPLASTIC PAVEMENT MARKING - LINE 4"	FOOT	1583	1583
78000500	THERMOPLASTIC PAVEMENT MARKING - LINE 8"	FOOT	200	200
78000600	THERMOPLASTIC PAVEMENT MARKING - LINE 12"	FOOT	142	142

15

CONSTR. CODE
CONT. MAINT.
100% STATE

CODE NO.	ITEM	UNIT	TOTAL QUANTITY	ROADWAY
				0044 URBAN
78100100	RAISED REFLECTIVE PAVEMENT MARKER	EACH	34	34
78300100	PAVEMENT MARKING REMOVAL	SQ FT	158	158
78300200	RAISED REFLECTIVE PAVEMENT MARKER REMOVAL	EACH	34	34
81100400	CONDUIT ATTACHED TO STRUCTURE, 1 1/4" DIA., GALVANIZED STEEL	FOOT	278	278
81702441	ELECTRIC CABLE IN CONDUIT, 600V (XLP-TYPE USE) 2-12/C, 1-12/C GROUND	FOOT	300	300
X0323586	PIPE DRAIN REMOVAL	FOOT	84	84
X2010507	CLEARING, SPECIAL	ACRE	0.3	0.3
X7010410	SPEED DISPLAY TRAILER	CAL MO	2	2
Z0007126	HANDRAIL REMOVAL	FOOT	350	350
Z0018911	DRILL AND GROUT #6 TIE BARS	EACH	736	736
Z0026400	FURNISHING AND PLACING SAND FILL	CU YD	36	36
Z0051400	REMOVING AND RESETTNG POSTS	EACH	20	20
X1700002	COMBINATION CONCRETE CURB AND GUTTER, TYPE B-3. 12	FOOT	710	710
X1200029	FRAME AND GRATE, TYPE 11 (MODIFIED)	EACH	7	7

14

FILE NAME =	USER NAME = woodshankr1	DESIGNED - RW	REVISED -
e:\pwwork\pwwork\woodshankr1\9405789	366E26-shd-details.dgn	DRAWN - RW	REVISED -
#MODELNAME#	PLOT SCALE = 99.8980' / 1" =	CHECKED - HA	REVISED -
	PLOT DATE = 12/8/2011	DATE -	REVISED -

STATE OF ILLINOIS
DEPARTMENT OF TRANSPORTATION

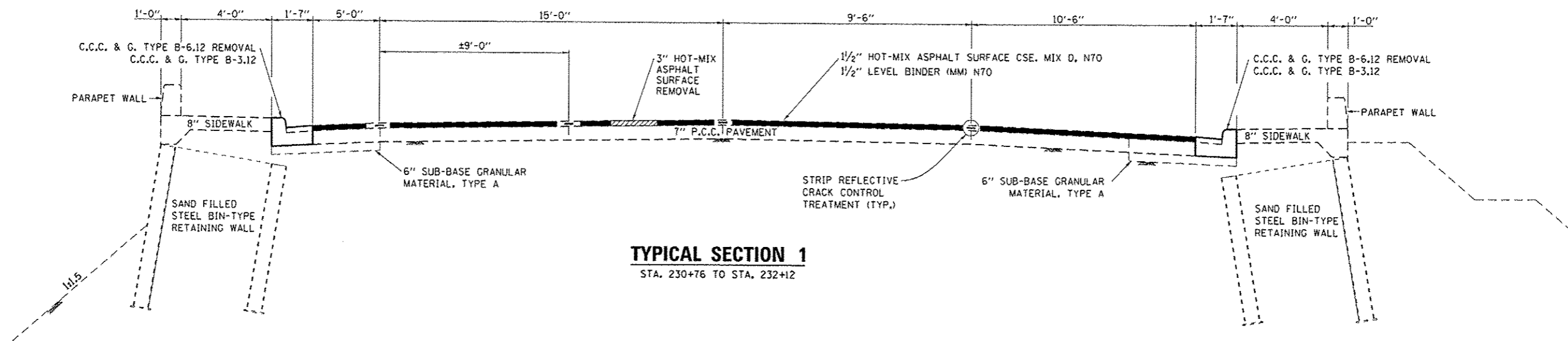
SUMMARY OF QUANTITIES

SCALE: SHEET 4 OF 5 SHEETS STA. TO STA.

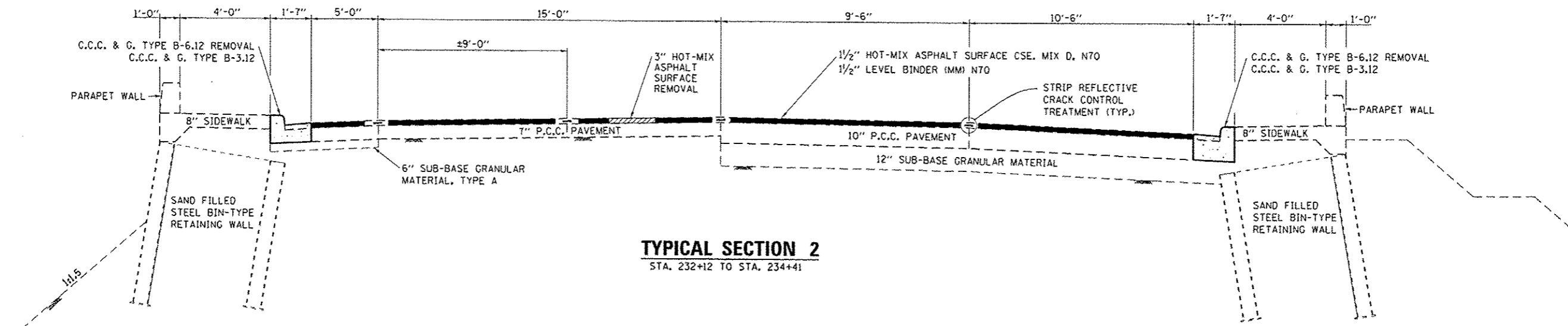
F.A.P. RTE.	SECTION	COUNTY	TOTAL SHEETS	SHEET NO.
623	133BR-2IT	LASALLE	25	6
			CONTRACT NO. 66E26	
[ILLINOIS] FED. AID PROJECT				

CODE NO.	ITEM	UNIT	TOTAL QUANTITY	CONSTR. CODE
				CONT. MAINT.
				100% STATE
				ROADWAY
				0044
				URBAN
X1700003	SIDEWALK REMOVAL (SPECIAL) WITH PARAPET WALL	CU YD	13.6	13.6
X1700004	PORTLAND CEMENT CONCRETE SIDEWALK (SPECIAL) WITH PARAPET WALL	CU YD	13.6	13.6

2 •SPECIALTY ITEMS



TYPICAL SECTION 1
STA. 230+76 TO STA. 232+12



TYPICAL SECTION 2
STA. 232+12 TO STA. 234+41

HMA MIXTURE REQUIREMENT TABLE		
LOCATION(S):	STA. 230+76 TO STA. 234+41	STA. 230+76 TO STA. 234+41
MIXTURE USE(S):	SURFACE	LEVELING BINDER
BINDER GRADE (PG):	PG64-22	PG64-22
DESIGN AIR VOIDS:	4% @ N70	4% @ N70
MIXTURE COMPOSITION: (MIXTURE GRADATION)	IL 9.5	IL 9.5
FRICTION AGGREGATE:	MIXTURE D	
MIXTURE WEIGHT:	112.0 LB/SY/IN	112.0 LB/SY/IN
QUALITY MANAGEMENT PROGRAM:	OC/OA	OC/OA
SUBLOT SIZE:		
DENSITY TEST METHOD:	CORES	CORES

FILE NAME =	USER NAME = woodshankr1	DESIGNED - RW	REVISED -
at:\pwwork\pwwork\woodshankr1\0405789\268E26-shs-details.dgn		DRAWN - RW	REVISED -
	PLOT SCALE = 99.8980' / in.	CHECKED - HA	REVISED -
#MODELNAME*	PLOT DATE = 12/8/2014	DATE -	REVISED -

STATE OF ILLINOIS
DEPARTMENT OF TRANSPORTATION

TYPICAL SECTIONS

SCALE: _____ SHEET 1 OF 1 SHEETS STA. _____ TO STA. _____

F.A.P. RTE.	SECTION	COUNTY	TOTAL SHEETS	SHEET NO.
623	(33BR-2)I	LASALLE	25	8
CONTRACT NO. 66E26			ILLINOIS FED. AID PROJECT	

DRAINAGE SCHEDULE

LOCATION	STORM SEWER REMOVAL 8"	STORM SEWER REMOVAL 12"	PIPE DRAIN REMOVAL	REMOVING INLETS	REMOVING MANHOLES	TRENCH BACKFILL	STORM SEWERS CLASS B TYPE 1 12"	PIPE DRAIN CORRUGATE STEEL 12"	MANHOLES TYPE A 5' DIA.	INLETS TYPE A	TYPE 11 FRAME AND GRATE (MODIFIED)	INSERTION CULVERT LINER 12"
	FOOT	FOOT	FOOT	EACH	EACH	CU YD	FOOT	FOOT	EACH	EACH	EACH	FOOT
NORTH SIDE												
STA. 231+31 -	16			1	1	14	20			1	1	
STA. 231+33 - STA. 232+28		95				12						
STA. 231+79 -		21	60			14						
STA. 232+30 -					1							
STA. 232+31 -	16			1		15	20			1	1	
STA. 234+01 -			8	1		15	20			1	1	
SUBTOTAL	32	116	68	3	2	70	60			3	3	
SOUTH SIDE												
STA. 231+31 -	20			1		15	20			1	1	
STA. 231+32 - STA. 232+30						20	98					
STA. 232+31 -	20			1		15	20			1	1	
STA. 232+32 - STA. 233+05						19	73					
STA. 233+06 -			12	1				12	1			238
STA. 234+01 - STA. 234+06		5	12				20			1	1	
STA. 234+06 -				1		24						
SUBTOTAL	40	5	12	4		93	231	12	1	3	4	238
TOTALS	72	121	80	7	2	163	291	12	1	6	7	238

PATCHING SCHEDULE

LOCATION	CLASS B PATCH				SAW CUTS	DOWEL BARS 1 1/4"	DOWEL BARS 1 1/2"	DRILL AND GROUT #6 TIE BARS
	10" TYPE II	10" TYPE IV	13" TYPE II	13" TYPE IV				
	SO YD	SO YD	SO YD	SO YD				
NORTH SIDE								
STA. 231+31	13				66	36		
STA. 231+79	9				41	24		
STA. 232+31	13				66	36		
STA. 231+36 TO STA. 232+28		42			276			93
STA. 234+06	13				66	36		
SUBTOTAL	48	42			515	132		93
SOUTH SIDE								
STA. 231+31	13				60	36		
STA. 232+31			13		60	36		
STA. 234+06				23	70	36		
SUBTOTAL			13	23	190	36	72	
TOTALS	61	42	13	23	705	168	72	93

SIDEWALK SCHEDULE

LOCATION	SIDEWALK REMOVAL (SPECIAL) WITH PARAPET WALL	PORTLAND CEMENT CONCRETE SIDEWALK WITH PARAPET WALL	DRILL AND GROUT #6 TIE BARS
	CU YD	CU YD	EACH
NORTH SIDE			
STA. 231+28 TO STA. 231+34	1	1	36
STA. 231+66 TO STA. 231+86	3.5	3.5	36
STA. 232+27 TO STA. 232+33	1.1	1.1	36
STA. 233+96 TO STA. 234+06	2	2	36
NORTHSIDE SUBTOTALS	7.6	7.6	144
SOUTH SIDE			
STA. 231+28 TO STA. 231+34	1.1	1.1	36
STA. 231+66 TO STA. 231+86	1.1	1.1	36
STA. 232+27 TO STA. 232+33	1.9	1.9	36
STA. 233+96 TO STA. 234+06	1.9	1.9	36
SOUTHSIDE SUBTOTALS	6	6	144
TOTALS	13.6	13.6	288

EMBANKMENT SCHEDULE

LOCATION	EARTH EXCAVATION	FURNISHED EXCAVATION	FURNISHING AND PLACING SAND FILL	SEEDING CLASS 3	NITROGEN FERTILIZER	PHOSPHORUS FERTILIZER	POTASSIUM FERTILIZER	TURF REINFORCEMENT MAT	CLEARING SPECIAL
	CU YD	CU YD	CU YD	ACRE	POUND	POUND	POUND	SO YD	ACRE
NORTH SIDE									
STA. 231+79	500	1000	25	0.09	9	9	9	417	0.3
STA. 234+06		400	11	0.02	2	2	2	111	
TOTALS	500	1400	36	0.11	11	11	11	528	0.3

PAVEMENT SCHEDULE

LOCATION	HOT-MIX ASPHALT SURFACE REMOVAL 3"	MIXTURE FOR CRACKS JOINTS AND FLANGEWAYS	STRIP REFLECTIVE CRACK CONTROL TREATMENT	BITUMINOUS MATERIALS (PRIME COAT)	LEVELING BINDER (HM) N70	LEVELING BINDER (MM) N70	HOT-MIX ASPHALT SURFACE COURSE MIX D. N70
	SQ YD	TON	FOOT	POUND	TON	TON	TON
NORTH SIDE							
STA. 230+76 TO STA. 234+41	811	1	1065	548	1	69	69
SOUTH SIDE							
STA. 230+76 TO STA. 234+41	811	1	730	548	1	69	69
TOTALS	1622	2	1795	1096	2	138	138

CURB AND GUTTER SCHEDULE

LOCATION	COMBINATION CURB AND GUTTER REMOVAL	COMBINATION CONCRETE CURB & GUTTER TYPE B-3.12	DRILL AND GROUT #6 TIE BARS
	FOOT	FOOT	EACH
NORTH SIDE			
STA. 230+76 TO STA. 234+26	350	350	175
SOUTH SIDE			
STA. 230+81 TO STA. 234+41	360	360	180
TOTALS	710	710	355

HANDRAIL SCHEDULE

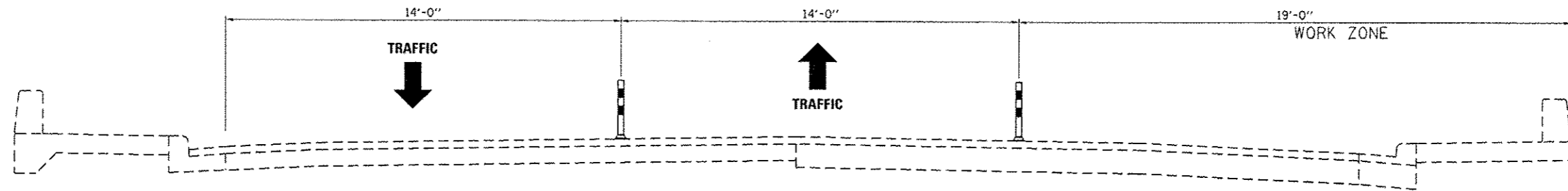
LOCATION	HANDRAIL REMOVAL	REMOVING AND RESETTING POSTS	ALUMINUM RAILING TYPE L
	FOOT	EACH	FOOT
NORTHSIDE			
STA. 230+76 - STA. 234+26	350		350
STA. 231+28 - STA. 231+34		1	
STA. 231+66 - STA. 231+86		3	
STA. 232+27 - STA. 232+33		1	
STA. 233+96 - STA. 234+04		1	
VARIOUS		10	
NORTHSIDE SUBTOTALS	350	16	350
SOUTHSIDE			
STA. 231+28 - STA. 231+34		1	
STA. 232+27 - STA. 232+33		1	
STA. 233+01 - STA. 233+11		1	
STA. 233+96 - STA. 234+04		1	
SOUTHSIDE SUBTOTALS		4	
TOTALS	350	20	350

ELECTRICAL SCHEDULE

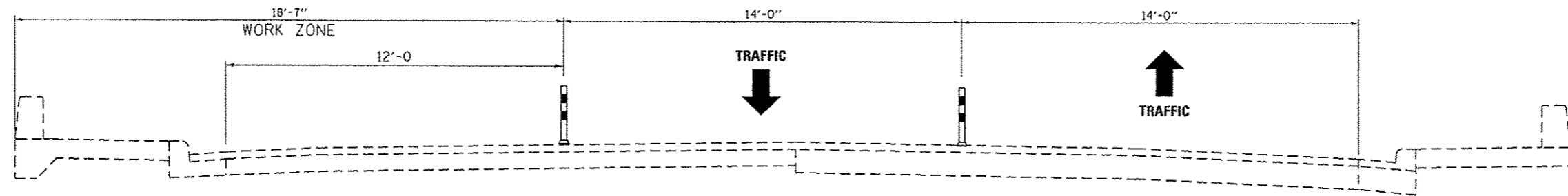
LOCATION	CONDUIT ATTACHED TO STRUCTURE 1 1/4" DIA. GALVANIZED STEEL	ELECTRIC CABLE IN CONDUIT 600V (XLP-TYPE USE) 2-12C, 1-12/C GROUND
	FOOT	FOOT
NORTH SIDE		
STA. 231+10 - STA. 233+88	278	300

PAVEMENT MARKING SCHEDULE

LOCATION	PAVEMENT MARKING REMOVAL	THERMOPLASTIC PAVEMENT MARKING L & S	THERMOPLASTIC PAVEMENT MARKING LINE 4"	THERMOPLASTIC PAVEMENT MARKING LINE 8"	THERMOPLASTIC PAVEMENT MARKING LINE 12"	RAISED REFLECTIVE PAVEMENT MARKER REMOVAL	RAISED REFLECTIVE PAVEMENT MARKER	
		SQ FT	FOOT	FOOT	FOOT	EACH	CRYSTAL	AMBER
STA. 229+54 - STA. 230+76	124	31	274	105		11	3	8
STA. 230+76 - STA. 234+41		16	1263	72	142	20	2	18
STA. 234+41 - STA. 231+64	34	16	46	23		3	1	2
TOTALS	158	63	1583	200	142	34	6	28

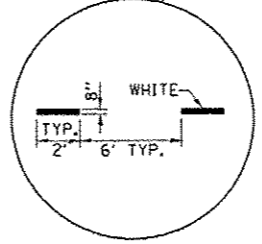
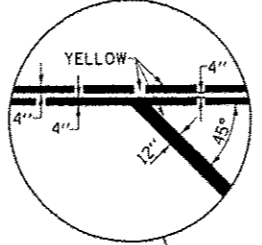
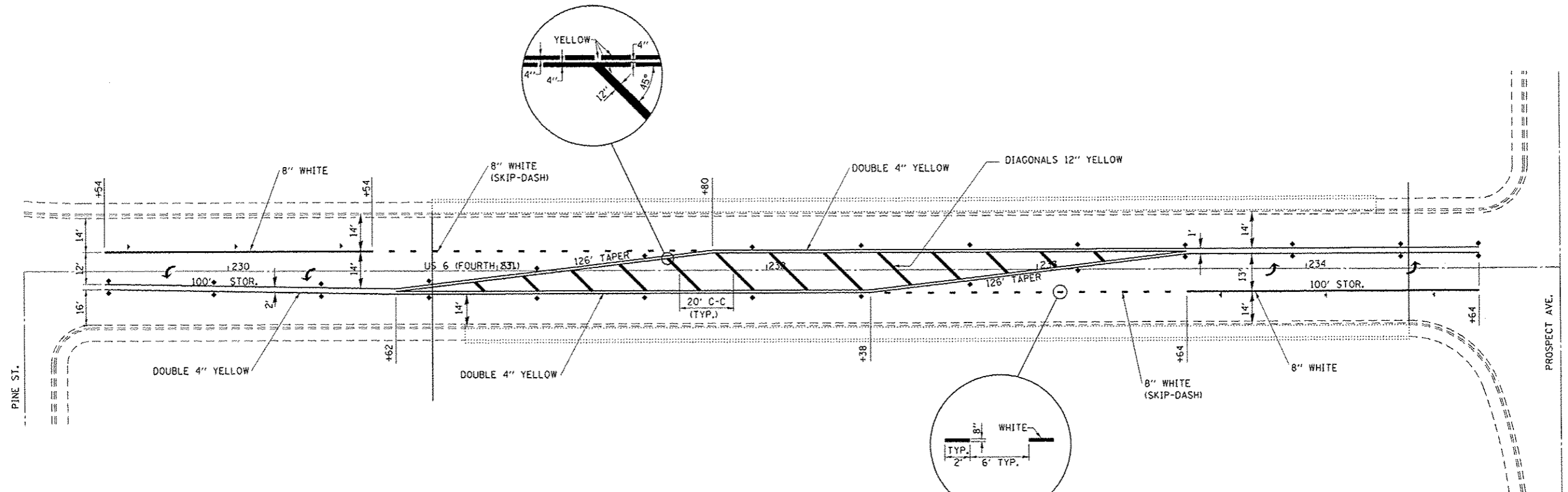


CROSS SECTION
ESTBOUND LANE CLOSED
 (LOOKING EAST)



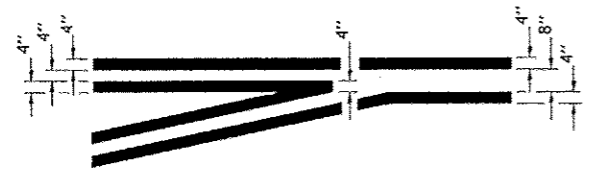
CROSS SECTION
WETBOUND LANE CLOSED
 (LOOKING EAST)

FILE NAME <	USER NAME = woodshankr1	DESIGNED - RW	REVISED -	STATE OF ILLINOIS DEPARTMENT OF TRANSPORTATION	STAGING DETAILS FOR STANDARD 701502	F.A.P. RTE.	SECTION	COUNTY	TOTAL SHEETS	SHEET NO.	
c:\pwwork\pwwork\woodshankr1\d8409789	66E26-ahs-ds11.dgn	DRAWN - RW	REVISED -			623	(33BR-2)T	LASALLE	25	11	
MODELNAME	PLOT SCALE = 99.8980' / 10.	CHECKED - HA	REVISED -			CONTRACT NO. 66E26		ILLINOIS FED. AID PROJECT			
	PLOT DATE = 12/8/2014	DATE -	REVISED -			SCALE: _____	SHEET 1 OF 1 SHEETS	STA. _____	TO STA. _____		

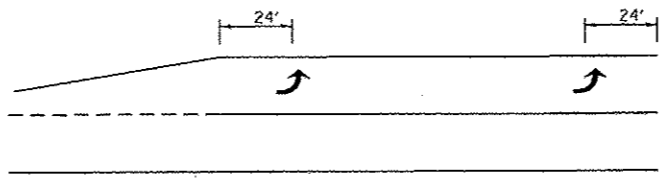


LEGEND

- ◆ BIDIRECTIONAL RAISED REFLECTIVE PAVEMENT MARKER – AMBER
- ◀ MONODIRECTIONAL RAISED REFLECTIVE PAVEMENT MARKER – CRYSTAL



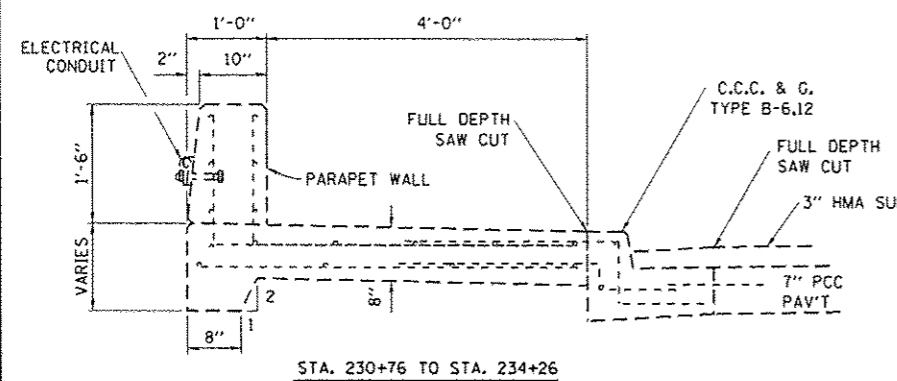
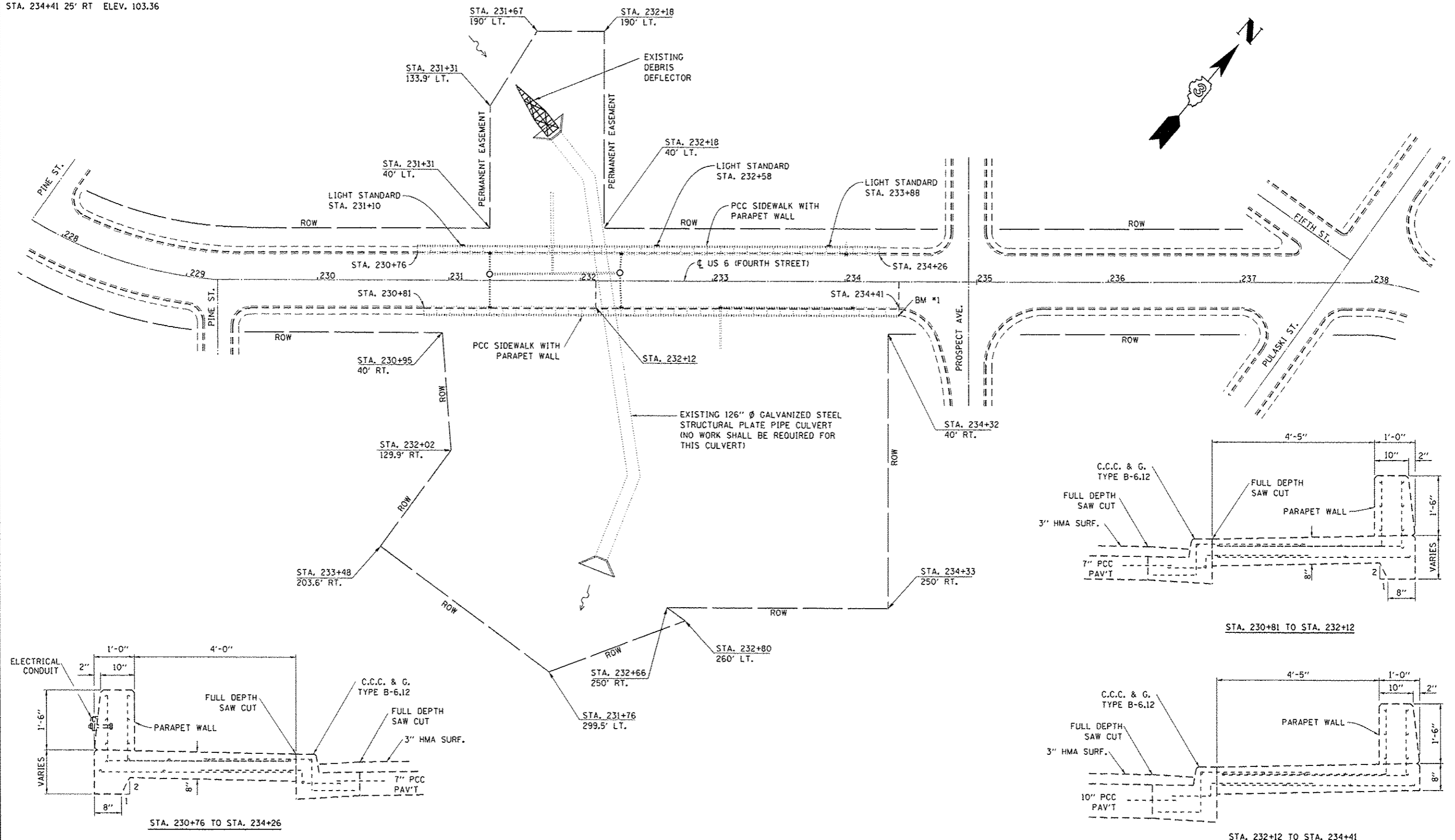
**TYPICAL APPLICATION
@ LEFT TURN LANES**



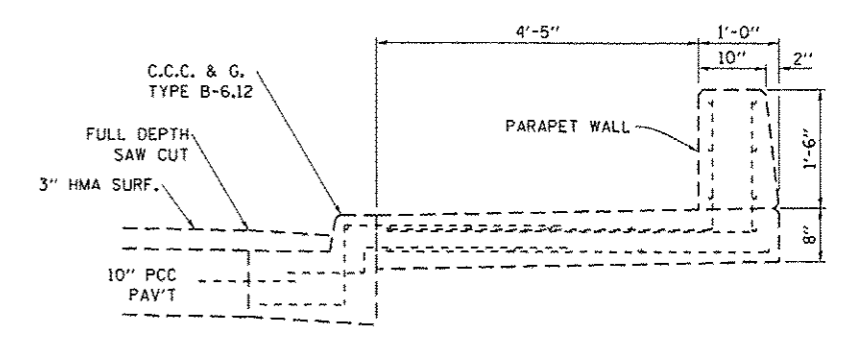
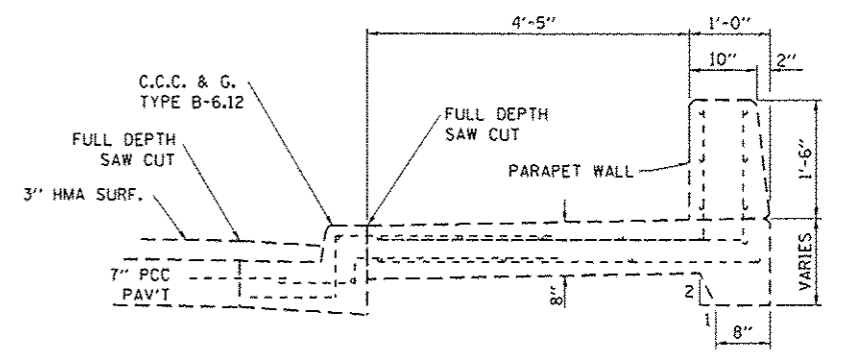
**TYPICAL PLACEMENT OF ARROWS
IN TURN LANES**

FILE NAME =	USER NAME = woodshenk1	DESIGNED - RW	REVISED -	STATE OF ILLINOIS DEPARTMENT OF TRANSPORTATION	PAVEMENT MARKING	F.A.P. RTE.	SECTION	COUNTY	TOTAL SHEETS	SHEET NO.	
c:\pwwork\pwwork\woodshenk1\0405799	0306E26-shr-detail.dgn	DRAWN - RW	REVISED -			623	(33BR-2)T	LASALLE	25	12	
MODELNAME =	PLOT SCALE = 99.8988 1/ in.	CHECKED - HA	REVISED -			CONTRACT NO. 66E26					
	PLOT DATE = 12/8/2014	DATE -	REVISED -			ILLINOIS FED. AID PROJECT					

B.M. #1 CHISLED "□" EAST END OF SOUTHEAST WINGWALL
 STA. 234+41 25' RT ELEV. 103.36



**SECTION THRU SIDEWALK
 NORTH SIDE**



**SECTION THRU SIDEWALK
 SOUTH SIDE**

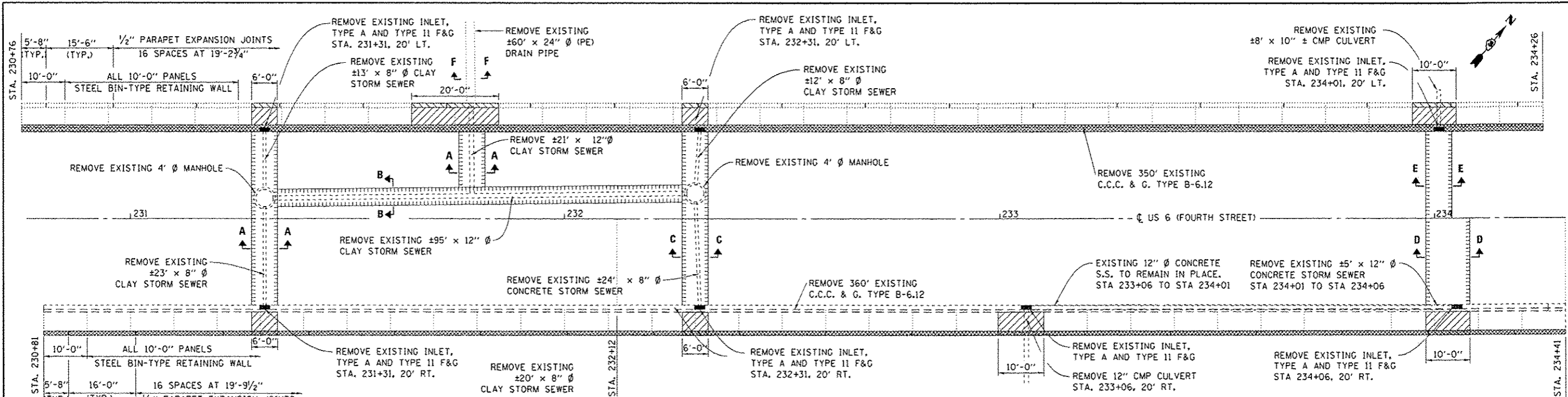
FILE NAME:	USER NAME: woodshenkri	DESIGNED: RW	REVISED:
c:\pwworksp\pudat\woodshenkri\04057891	9306E26-shd-details.dgn	DRAWN: RW	REVISED:
	PLOT SCALE = 94.8980 1/4 in.	CHECKED: HA	REVISED:
MODEL NAME:	PLOT DATE = 12/8/2014	DATE:	REVISED:

**STATE OF ILLINOIS
 DEPARTMENT OF TRANSPORTATION**

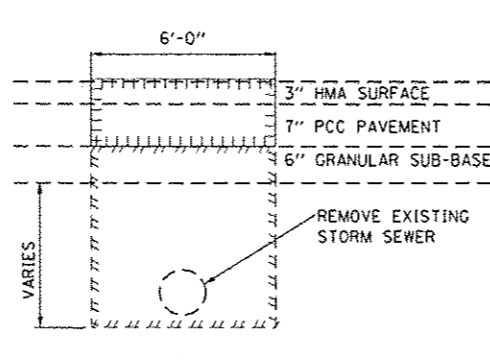
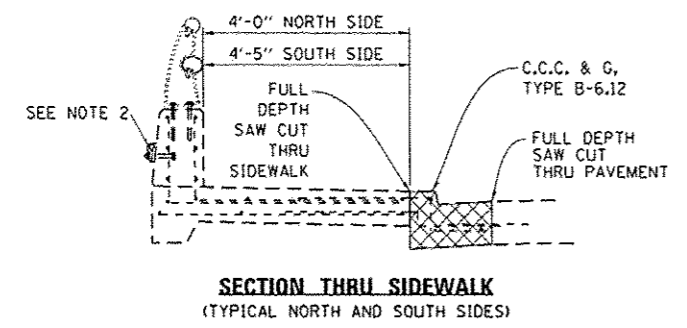
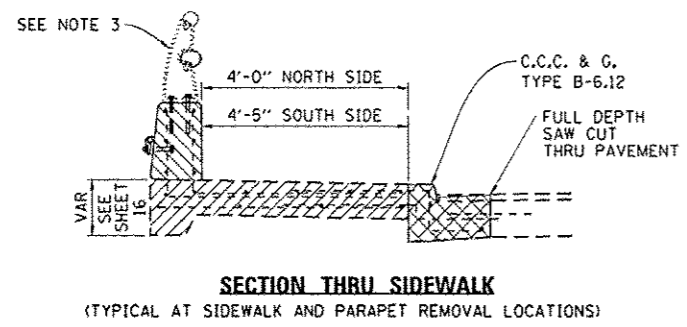
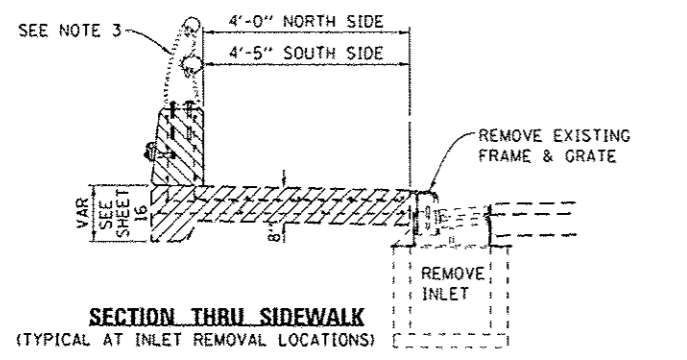
GENERAL SITE PLAN

SCALE: _____ SHEET 1 OF 1 SHEETS STA. _____ TO STA. _____

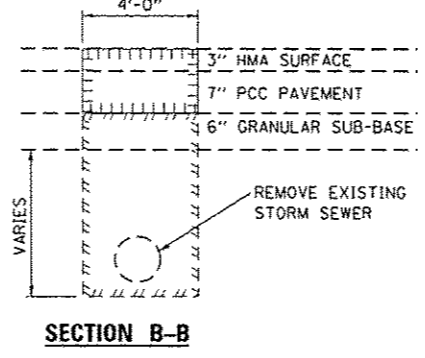
F.A.P. FILE NO. 623	SECTION (33BR-2)T	COUNTY LASALLE	TOTAL SHEETS 25	SHEET NO. 13
			CONTRACT NO. 66E26	
ILLINOIS FED. AID PROJECT				



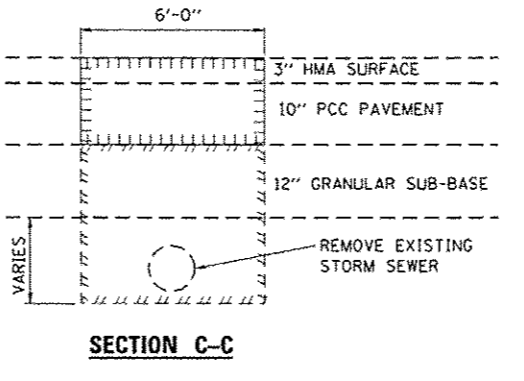
PLAN



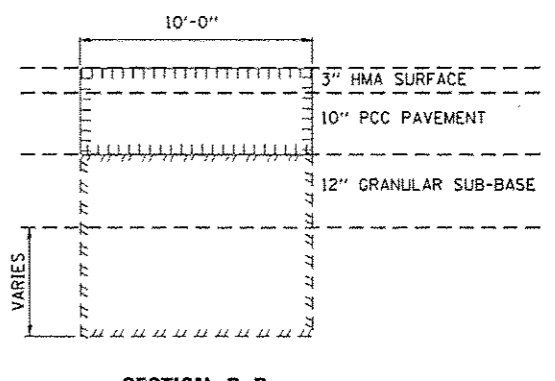
SECTION A-A



SECTION B-B



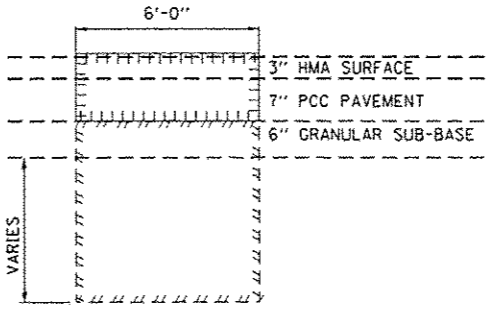
SECTION C-C



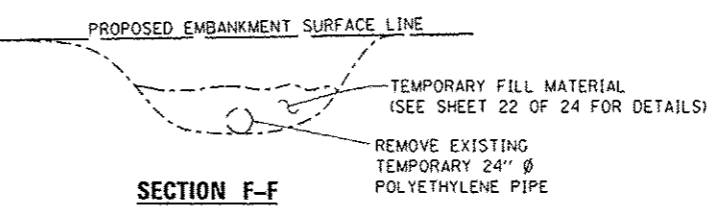
SECTION D-D

LEGEND

- PAVEMENT REMOVAL FOR CLASS B PATCH
- EARTH EXCAVATION FOR STORM SEWER REMOVAL
- SIDEWALK REMOVAL (SPECIAL)
- SIDEWALK PARAPET REMOVAL
- C.C.C. & G. TYPE B-6.12 REMOVAL



SECTION E-E

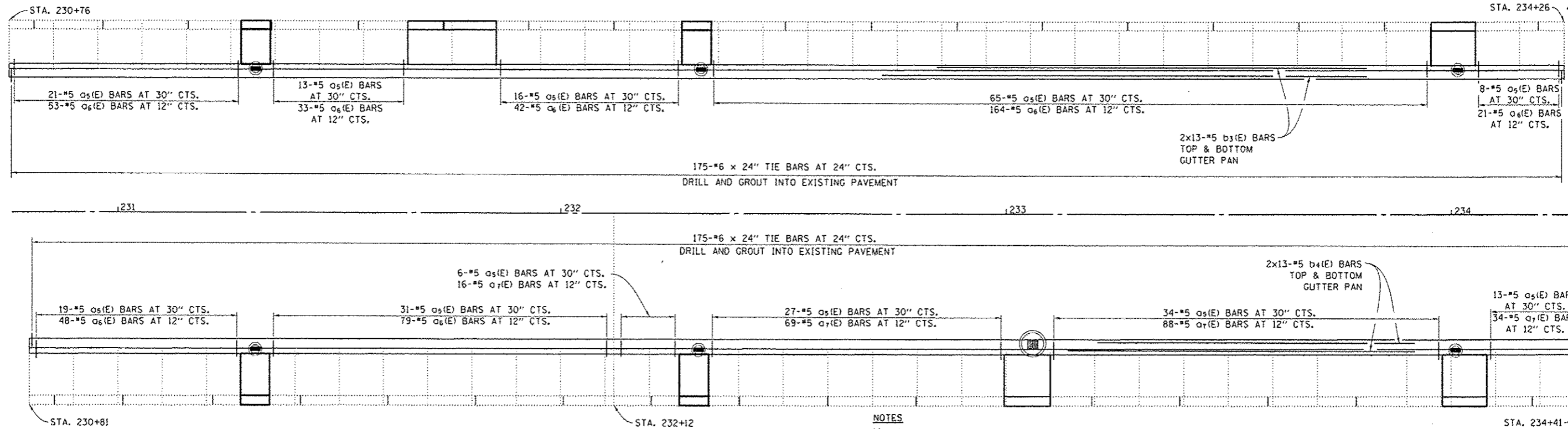


SECTION F-F

NOTES

1. EARTH EXCAVATION FOR STORM SEWER REMOVAL SHALL NOT BE PAID FOR SEPARATELY BUT SHALL BE INCLUDED IN THE COST OF THE RELATED STORM SEWER REMOVAL ITEMS.
2. EXISTING ELECTRICAL CONDUIT & WIRE SHALL BE REMOVED AND REPLACED WITH NEW CONDUIT & WIRE BETWEEN LIGHT STANDARDS. (NORTH SIDE ONLY).
3. EXISTING ALUMINUM HANDRAIL POSTS EXTENDING INTO PARAPET REMOVAL AREAS SHALL BE REMOVED AND REINSTALLED WITH NEW ANCHOR DEVICES. SEE SHEET 19 OF 24 FOR DETAILS.
4. THE ENGINEER SHALL VERIFY AND RECORD EXPANSION JOINT SPACING IN THE PARAPET WALL AND RAIL POST SPACINGS PRIOR TO THE CONTRACTOR BEGINNING REMOVAL OPERATIONS.
5. HMA SURFACE ON GUTTER PAN REMOVAL SHALL NOT BE PAID FOR SEPARATELY BUT SHALL BE INCLUDED IN THE COST OF THE PAVEMENT PATCH.

FILE NAME =	USER NAME = woodshankr1	DESIGNED - RW	REVISED -	STATE OF ILLINOIS DEPARTMENT OF TRANSPORTATION	DRAINAGE, SIDEWALK, PARAPET, CURB & GUTTER REMOVAL DETAILS	F.A.P. RTE. 623	SECTION (33BR-21T)	COUNTY LASALLE	TOTAL SHEETS 25	SHEET NO. 14		
MODELNAME#	3366E26-shr-details.dgn	DRAWN - RW	REVISED -			SCALE: _____	SHEET 1 OF 1 SHEETS	STA. _____	TO STA. _____	CONTRACT NO. 66E26		
	PLOT SCALE = 1/8" = 1'-0"	CHECKED - HA	REVISED -							ILLINOIS FED. AID PROJECT		
	PLOT DATE = 12/8/2014	DATE -	REVISED -									

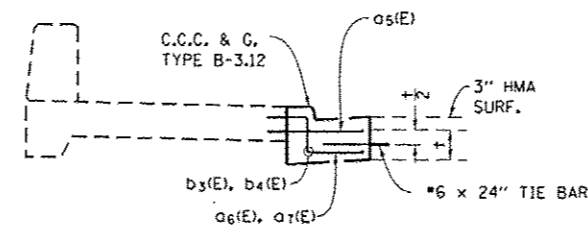


NOTES
 1/2" EXPANSION JOINTS IN PARAPET THAT FALL WITHIN 2' OF A CONSTRUCTION JOINT SHALL BE RELOCATED TO THE CONSTRUCTION JOINT.

PLAN

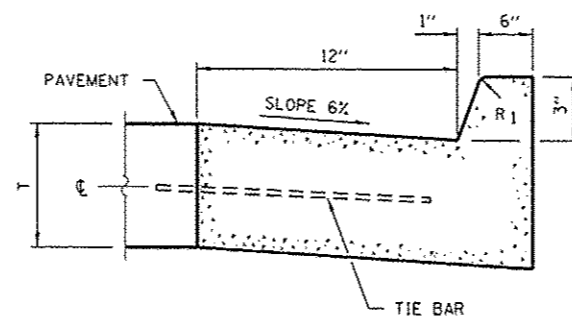
BILL OF MATERIALS

BAR	NO.	SIZE	LENGTH	SHAPE
a(E)	46	5	4'-9"	—
a1(E)	36	5	5'-2"	—
a2(E)	36	5	2'-11"	—
a3(E)	53	5	3'-8"	—
a4(E)	29	5	3'-11"	—
a5(E)	253	5	2'-1"	—
a6(E)	440	5	2'-11"	—
a7(E)	207	5	3'-2"	—
b(E)	48	5	5'-9"	—
b1(E)	12	5	19'-9"	—
b2(E)	24	5	9'-9"	—
b3(E)	52	5	27'-7"	—
b4(E)	52	5	28'-4"	—
d(E)	96	6	3'-5"	L
d1(E)	45	5	6'-1"	—
d2(E)	36	5	6'-7"	—
e(E)	24	5	5'-9"	—
e1(E)	6	5	7'-9"	—
e2(E)	6	5	11'-9"	—
e3(E)	12	5	9'-9"	—
REINFORCEMENT BARS, EPOXY COATED			POUNDS	8652

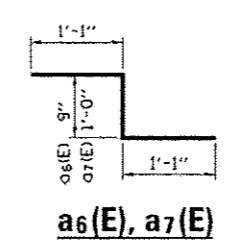


SECTION THRU SIDEWALK

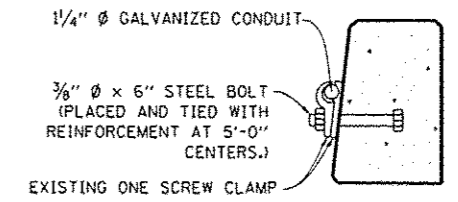
STA. 230+76 TO STA. 234+26 (NORTH SIDE)
 STA. 230+81 TO STA. 234+41 (SOUTH SIDE)
 "OMIT a6(E) AND a7(E) BARS THRU SIDEWALK REPLACEMENT AREAS"



CONCRETE CURB AND GUTTER TYPE B-3.12

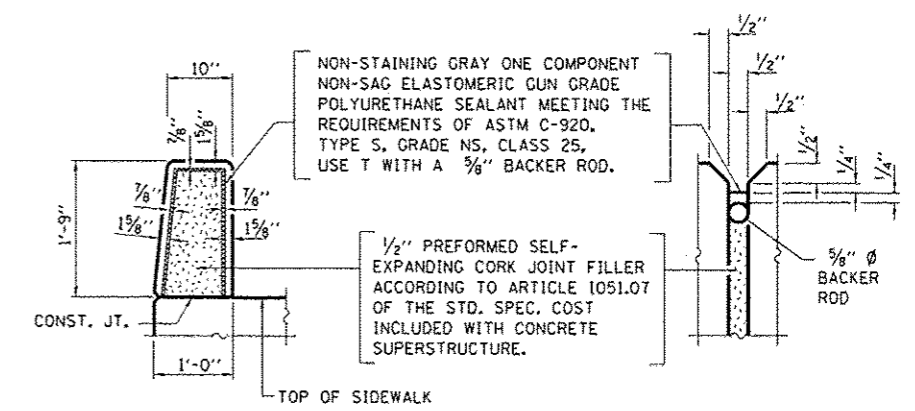


a6(E), a7(E)



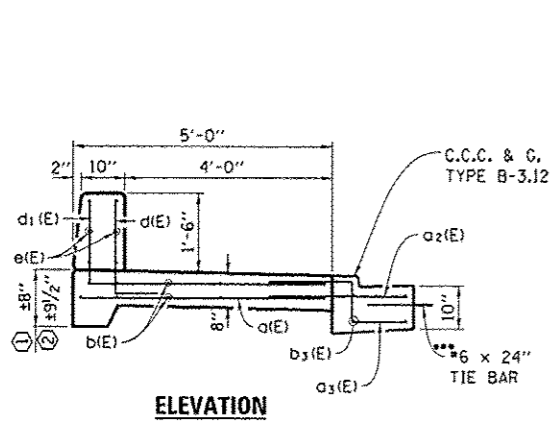
ELECTRICAL CONDUIT AT PARAPET WALL

EXISTING CLAMPS AND BOLTS SHALL BE REUSED WHENEVER PRACTICAL. EXISTING CLAMPS SHALL BE USED WITH NEW BOLTS IN PARAPET RECONSTRUCTION LOCATIONS. WHEN CLAMPS AND/OR BOLTS ARE FOUND TO BE UNUSEABLE, THEY SHALL BE REPLACED. REPLACEMENT OF THE CLAMPS AND OR BOLTS WHEN REQUIRED SHALL NOT BE PAID FOR SEPARATELY BUT SHALL BE INCLUDED IN THE NEW ELECTRICAL ITEMS INVOLVED.



PARAPET WALL JOINT

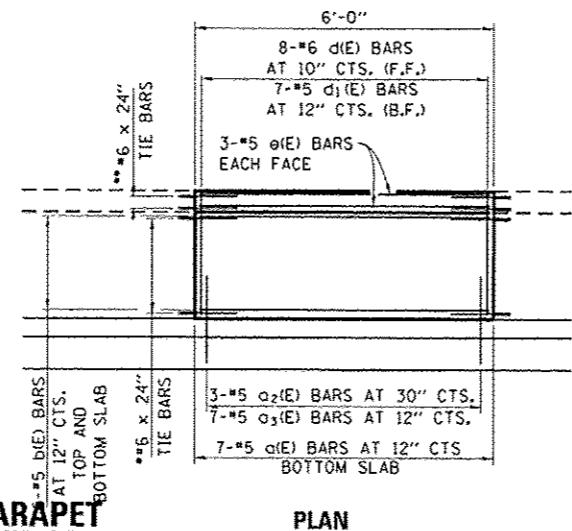
THE ENGINEER SHALL VERIFY THE SPACING OF EXISTING RETAINING WALL JOINTS PRIOR TO THE CONTRACTOR BEGINNING CONCRETE REMOVAL OPERATIONS.



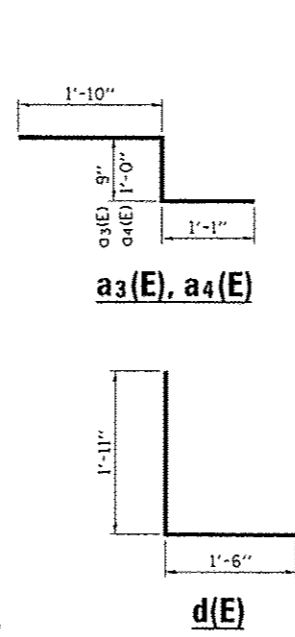
ELEVATION

SIDEWALK WITH PARAPET

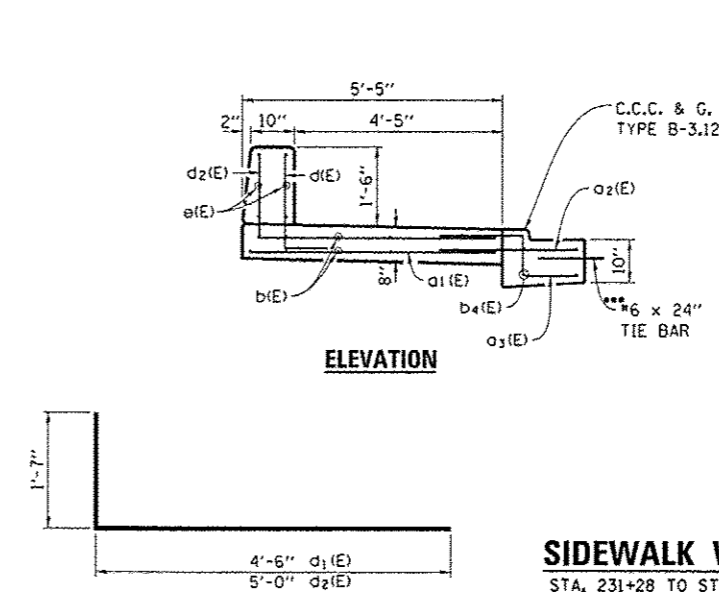
- ① STA. 231+28 TO STA. 231+34 (NORTH SIDE)
- ② STA. 232+27 TO STA. 232+33 (NORTH SIDE)



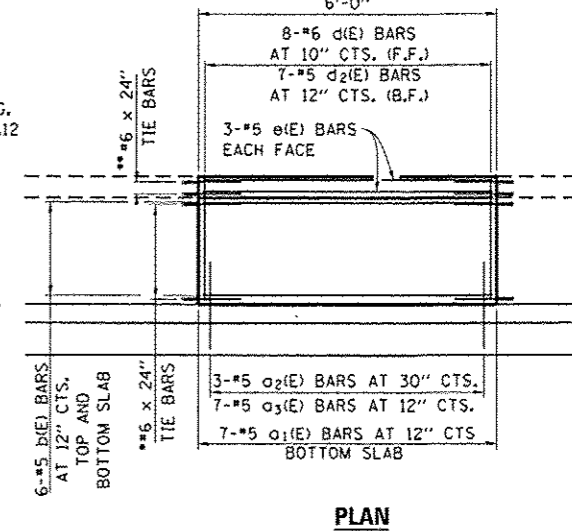
PLAN



d3(E), a4(E)

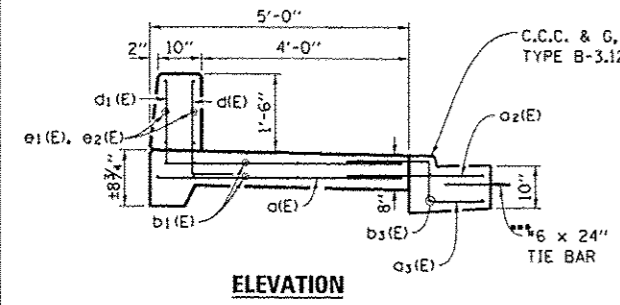


d1(E), d2(E)



PLAN

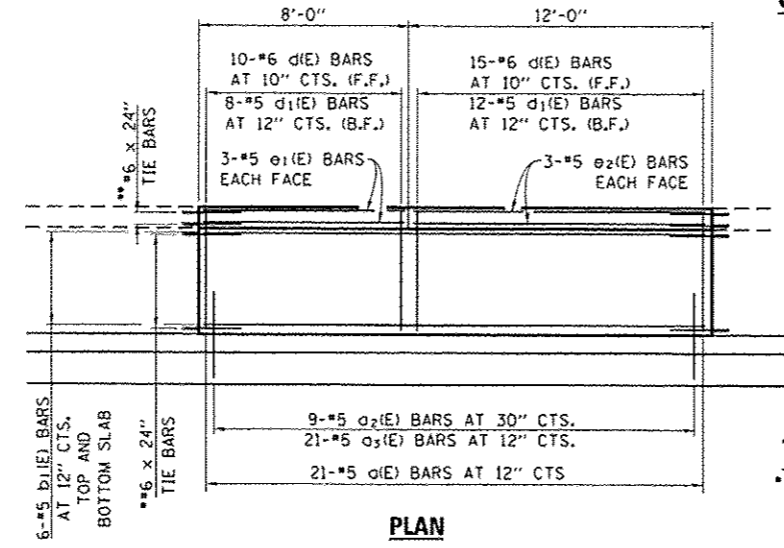
SIDEWALK WITH PARAPET
STA. 231+28 TO STA. 231+34 (SOUTH SIDE)



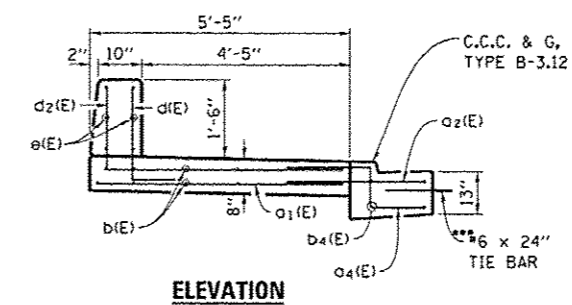
ELEVATION

SIDEWALK WITH PARAPET

STA. 231+66 TO STA. 231+86 (NORTH SIDE)



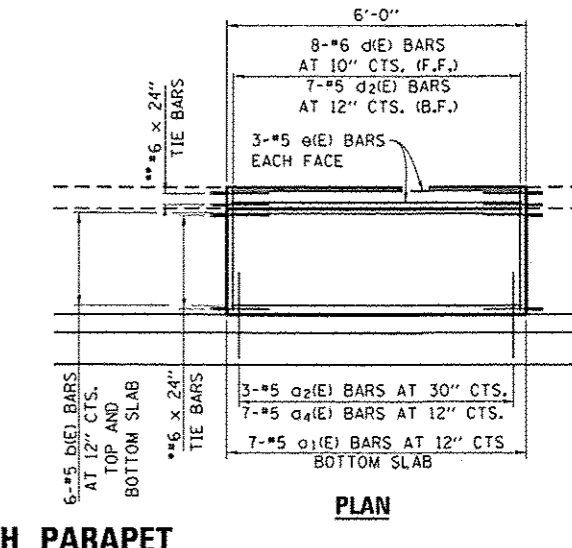
PLAN



ELEVATION

SIDEWALK WITH PARAPET

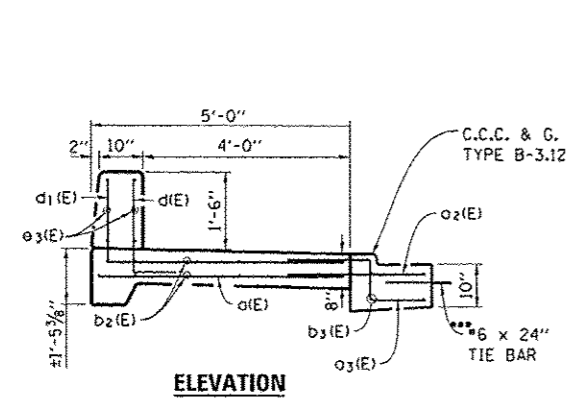
STA. 232+27 TO STA. 232+33 (SOUTH SIDE)



PLAN

TIE BARS

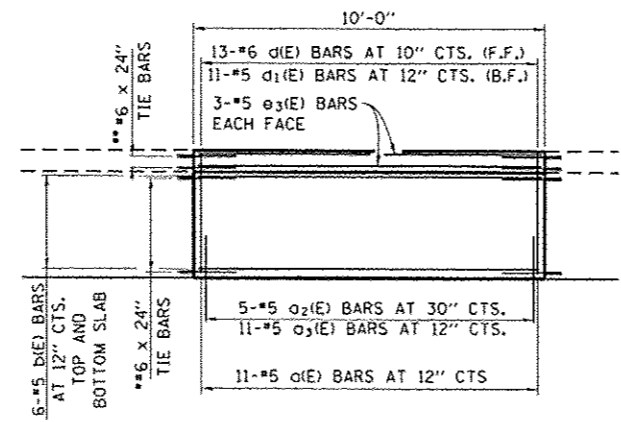
- * TIE BARS SHALL BE DRILLED AND GROUTED INTO EXISTING SIDEWALK AND LAPPED WITH b1(E) BARS (TYPICAL)
- ** TIE BARS SHALL BE DRILLED AND GROUTED INTO EXISTING PARAPET AND LAPPED WITH e1(E) BARS (TYPICAL).
- *** TIE BARS SHALL BE DRILLED AND GROUTED INTO EXISTING PAVEMENT (TYPICAL).



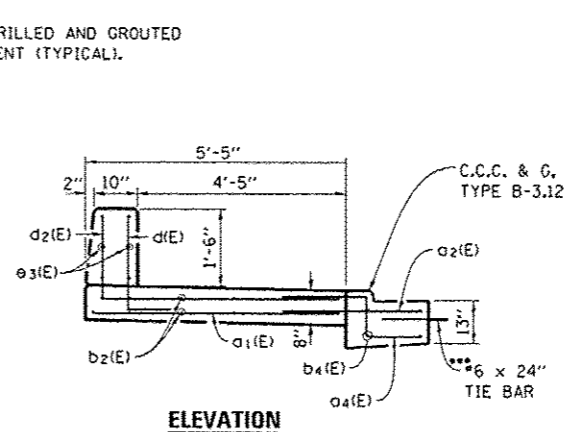
ELEVATION

SIDEWALK WITH PARAPET

STA. 233+96 TO STA. 234+06 (NORTH SIDE)



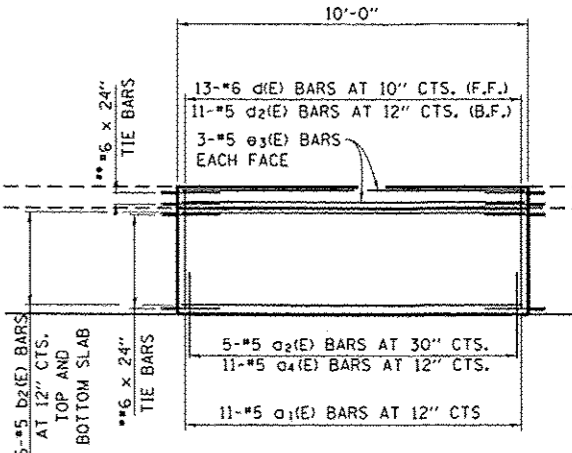
PLAN



ELEVATION

SIDEWALK WITH PARAPET

STA. 233+01 TO STA. 233+11 (SOUTH SIDE)
STA. 233+98 TO STA. 234+08 (SOUTH SIDE)



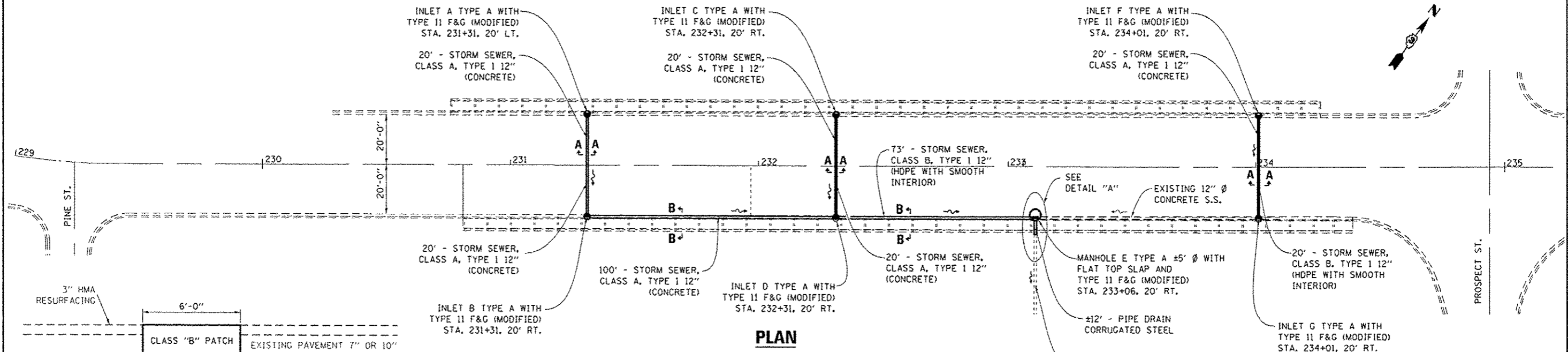
PLAN

FILE NAME	USER NAME	DESIGNED	REVISED
01\p\work\p\sidot\woodshankr\1\09405789	woodshankr	RW	-
MODEL NAME	PLOT SCALE	CHECKED	REVISED
	1/8" = 1'-0"	HA	-
	PLOT DATE	DATE	REVISED
	12/9/2014		-

STATE OF ILLINOIS
DEPARTMENT OF TRANSPORTATION

SIDEWALK WITH RETAINING WALL / CURB AND GUTTER RECONSTRUCTION DETAILS
SCALE: SHEET 2 OF 2 SHEETS STA. TO STA.

F.A.P. RTE.	SECTION	COUNTY	TOTAL SHEETS	SHEET NO.
623	(33BR-21T)	LASALLE	25	16
CONTRACT NO. 66E26				
ILLINOIS FED. AID PROJECT				

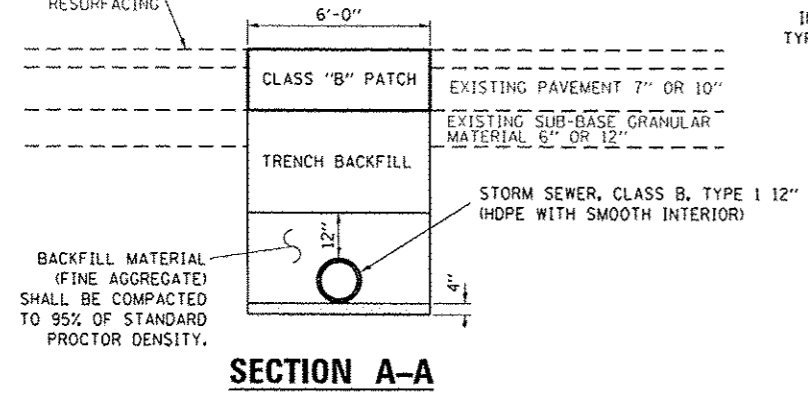


PLAN

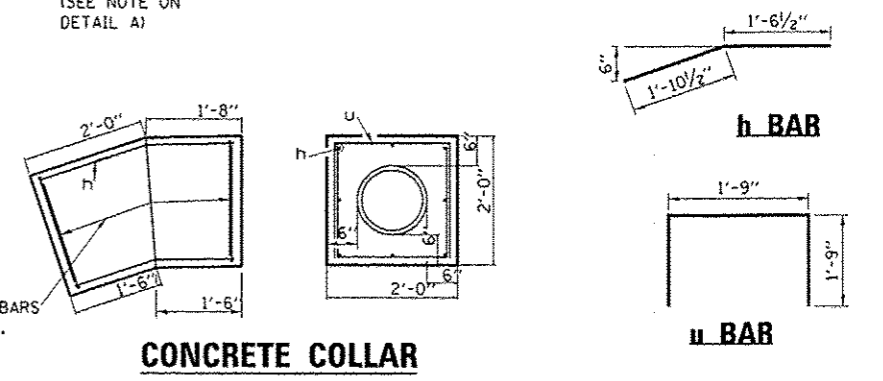
DRAINAGE ELEVATIONS

LOCATION	STRUCTURE	EOP	INVERT
A STA. 231+31 20' LT	INLET	100.16	96.65
B STA. 231+31 20' RT	INLET	99.49	96.30
C STA. 232+31 20' LT	INLET	100.44	97.40
D STA. 232+31 20' RT	INLET	99.38	95.50
E STA. 233+06 20' RT	MANHOLE	99.57	94.50
F STA. 234+01 20' RT	INLET	100.19	95.83
G STA. 234+01 20' LT	INLET	101.23	96.80

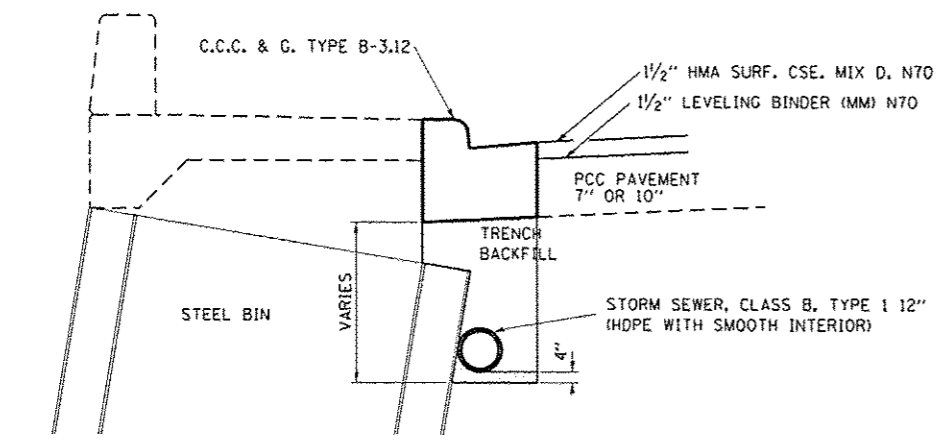
PIPE RUN	LENGTH (FT)	U/S INVERT	D/S INVERT	SLOPE (%)
A-B	40	96.65	96.35	0.75
B-D	98	96.30	95.50	0.82
C-D	40	97.40	96.20	3.00
D-E	74	95.50	94.60	1.22
E-OUTLET	12	94.50	-	3.00
F-E	95	95.83	95.46	0.38
G-F	40	96.00	96.80	2.00



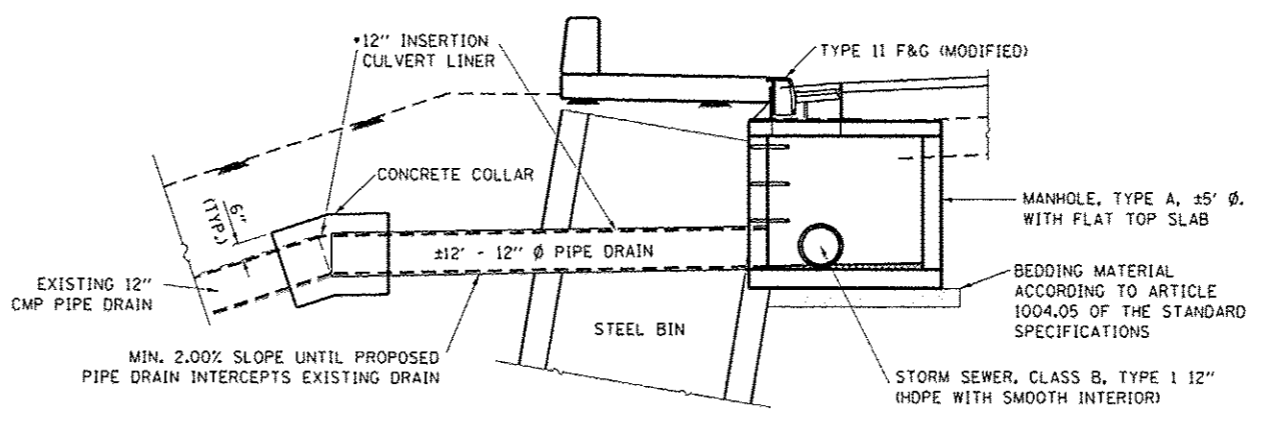
SECTION A-A



CONCRETE COLLAR



SECTION B-B



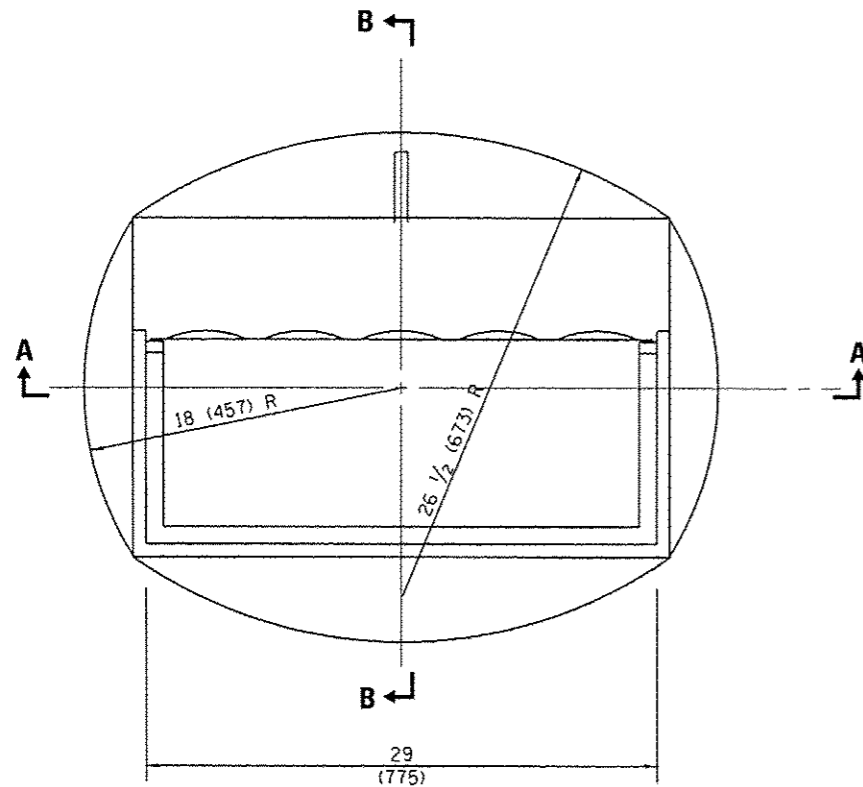
DETAIL "A"

*INSERTION CULVERT LINER SHALL RUN THE ENTIRE LENGTH OF THE PIPE DRAIN FROM THE 5' Ø MANHOLE TO THE BOTTOM OF THE EXISTING 12" Ø CMP PIPE DRAIN (SEE SHEET 25 OF 25).

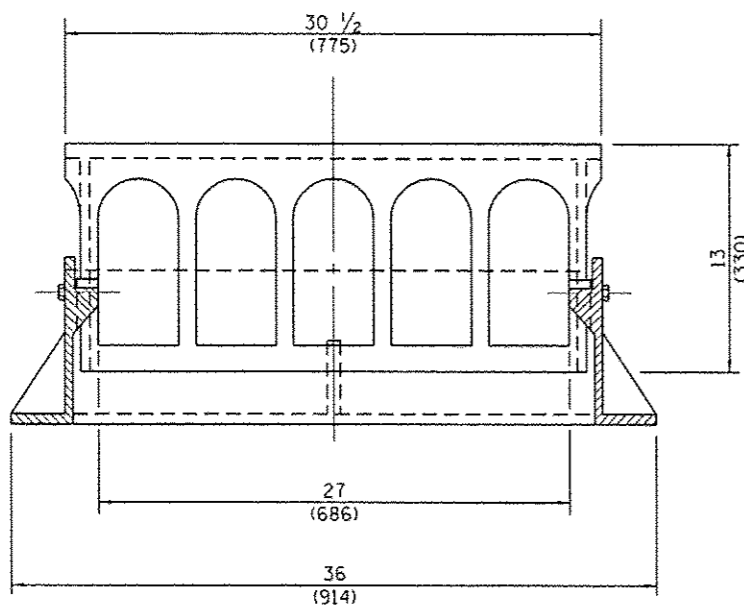
- NOTES**
- WHEN REQUIRED TO FACILITATE THE INSTALLATION OF THE MANHOLE OR STORM SEWER, THE CONTRACTOR HAS THE OPTION OF REMOVING PANEL SECTIONS OF EXISTING STEEL BIN-TYPE RETAINING WALL OR CUTTING THE PANELS TO INSTALL THE MANHOLE OR STORM SEWERS. IF THE CONTRACTOR REMOVES OR CUTS THE STEEL BIN-TYPE PANELS, THE INTEGRITY OF THE SIDEWALK AND ROADWAY SHALL BE MAINTAINED.
 - H BARS SHALL BE ORDERED FULL LENGTH AND CUT TO FIT.
 - REINFORCEMENT BARS FOR CONCRETE COLLAR SHALL BE PAID AS "REINFORCEMENT BARS, EPOXY COATED".

BILL OF MATERIAL FOR ONE COLLAR

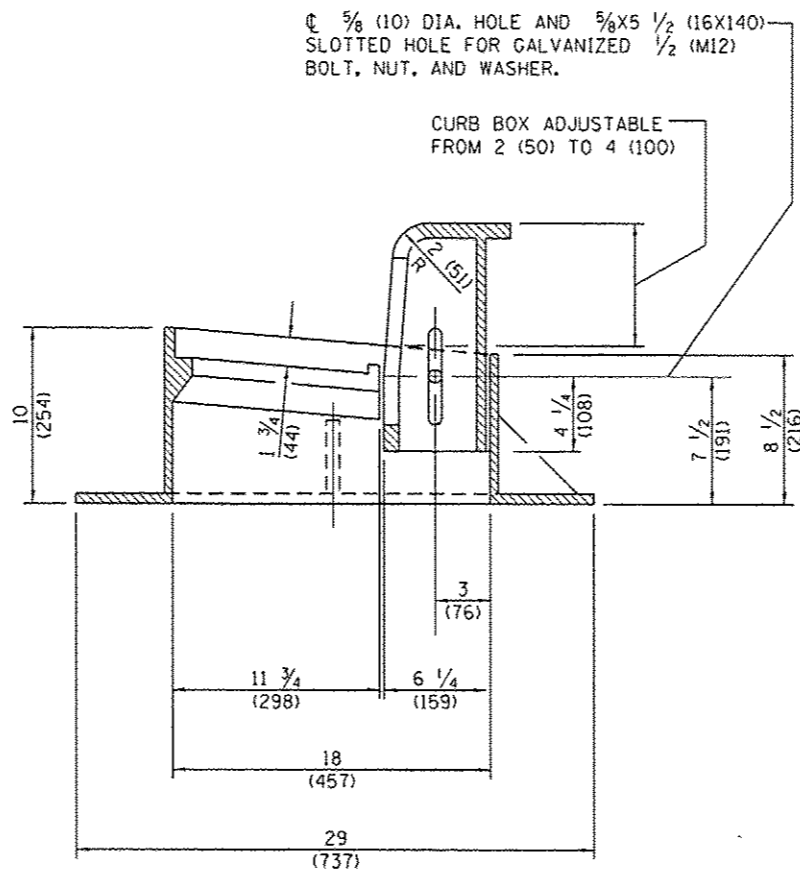
BAR	NO.	SIZE	LENGTH	SHAPE
h(E)	8	#4	3'-5"	—
u(E)	12	#4	5'-3"	□
CONCRETE COLLAR			CU. YD.	0.5
REINFORCEMENT BARS, EPOXY COATED			LBS.	60



CAST FRAME



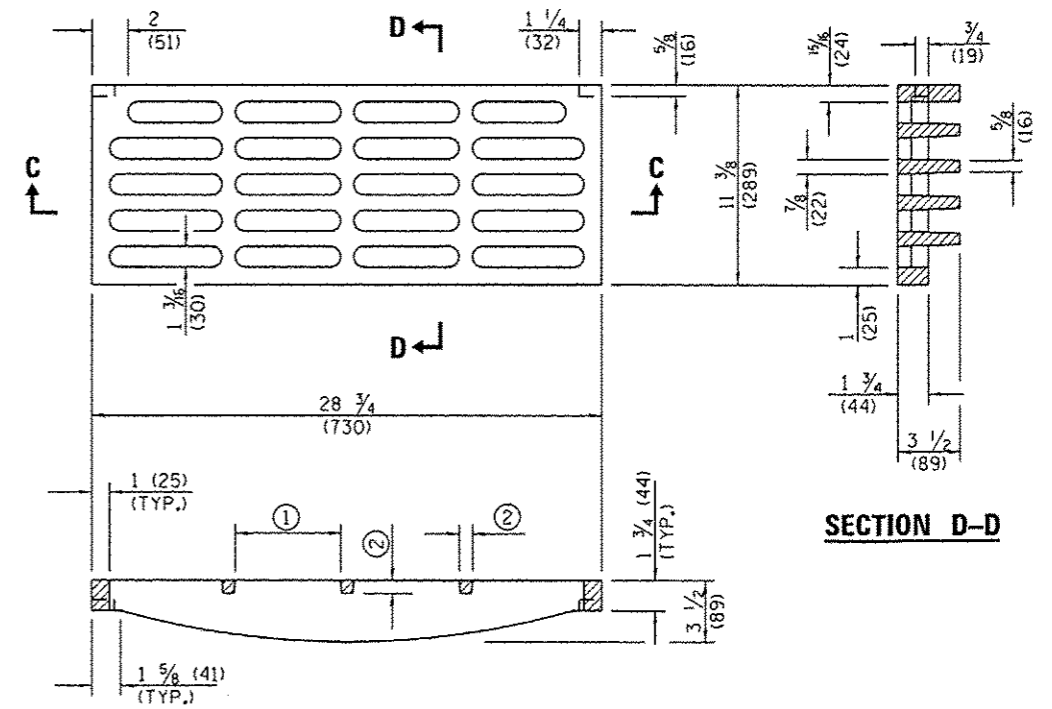
SECTION A-A



SECTION B-B

Ø 5/8 (10) DIA. HOLE AND 5/8 X 5 1/2 (16 X 140) SLOTTED HOLE FOR GALVANIZED 1/2 (M12) BOLT, NUT, AND WASHER.

CURB BOX ADJUSTABLE FROM 2 (50) TO 4 (100)



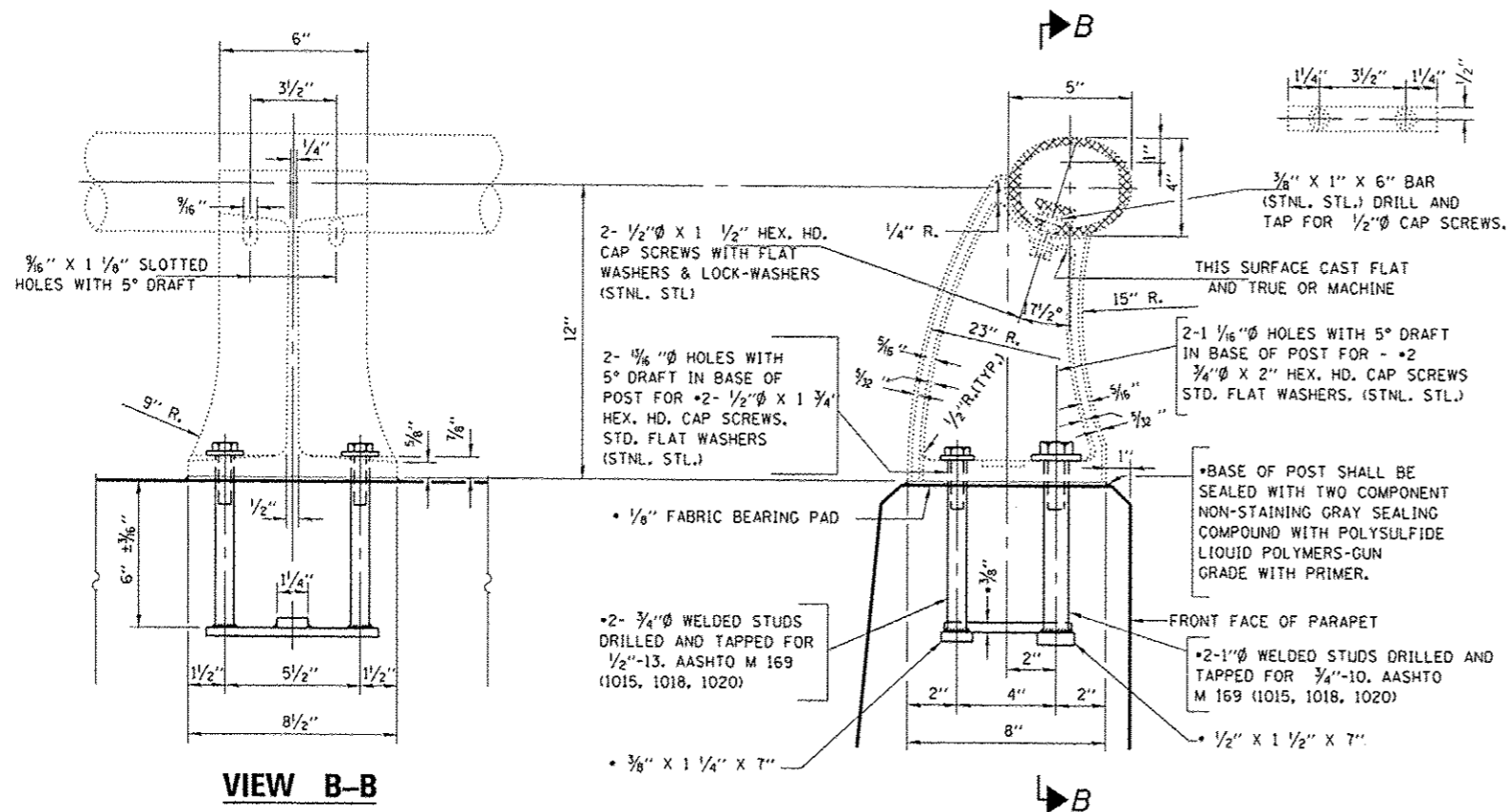
SECTION C-C

- ① = 6 1/4 (159) MAX. (TYP.)
- ② = 3/4 (19) MIN. (TYP.)

CAST GRATE

ALL DIMENSIONS ARE IN INCHES (MILLIMETERS) UNLESS OTHERWISE SHOWN.

FILE NAME: c:\pwork\woodshankr\1\405789	USER NAME: woodshankr	DESIGNED: RW	REVISED: -	STATE OF ILLINOIS DEPARTMENT OF TRANSPORTATION	FRAME AND GRATE, TYPE 11 (MODIFIED)	F.A.P. RTE. 623	SECTION 133BR-21T	COUNTY LASALLE	TOTAL SHEETS 25	SHEET NO. 18
MODELNAME: 66E26-shd-detail.dgn	PLT SCALE: 9/8"=1"	DRAWN: RW	REVISED: -			CONTRACT NO. 66E26				
	PLT DATE: 12/8/2014	CHECKED: HA	REVISED: -			ILLINOIS FED. AID PROJECT				
		DATE: -	REVISED: -			SCALE: SHEET 1 OF 1 SHEETS STA. TO STA.				

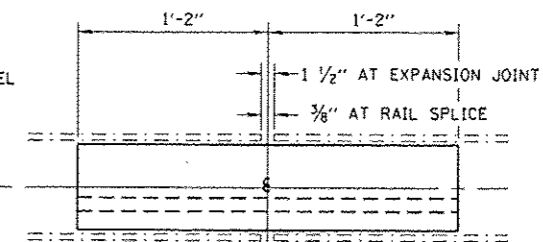


VIEW B-B

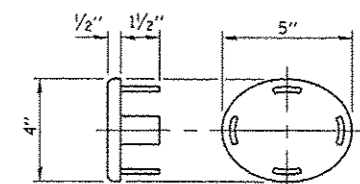
SECTION THRU RAIL

RAIL POST DETAILS

• NEW RAIL POST ANCHORAGE DEVICES WILL BE REQUIRED AT EACH LOCATION WHERE POSTS ARE CONNECTED TO NEW CONSTRUCTION. COST SHALL BE INCLUDED WITH REMOVING AND RE-ERECTING EXISTING RAILING.

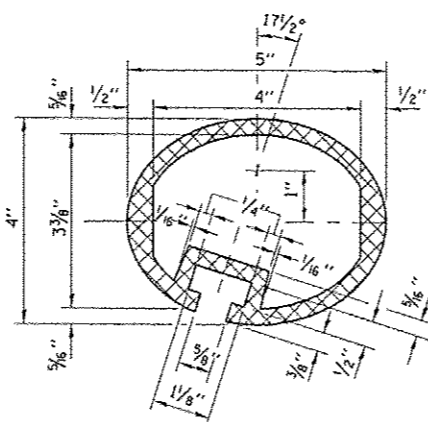


RAIL SPLICE

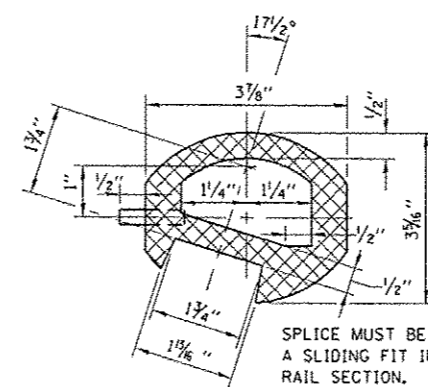


CAST END CAP

DRIVE FIT TYPE



SEC. THRU ELLIPTICAL RAIL SECTION

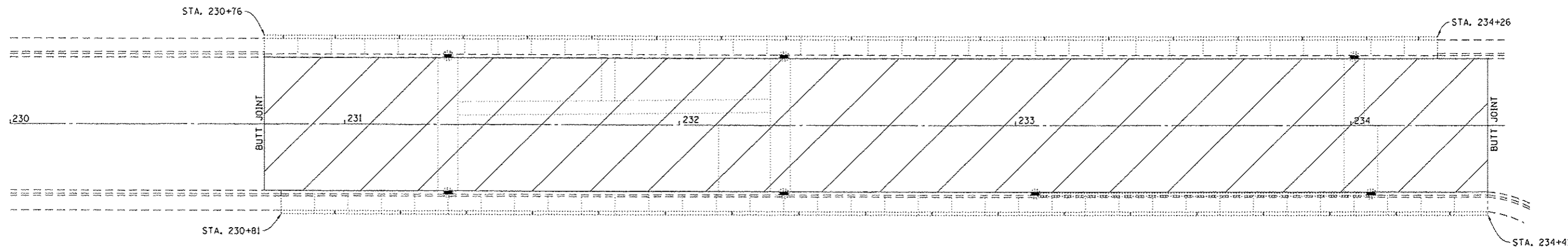


SEC. THRU SPLICE

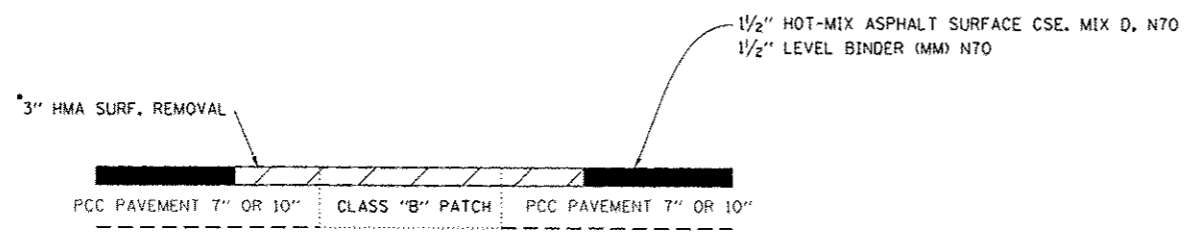
NOTES:

- ALL POSTS SHALL BE NORMAL TO PARAPET.
- ALL JOINTS IN RAIL SHALL BE SPLICED PER DETAIL.
- PROVIDE 1- 1/8" AND 2- 1/16" ALUMINUM SHIMS FOR 25% OF THE POSTS.
- RAIL ELEMENTS SHALL BE PARALLEL TO GRADE AND IN ALIGNMENT WITH TOP OF PARAPET - HIGH SPOTS WILL BE GROUND AND LOW SPOTS SHIMMED.
- RAIL POSTS SHOWN ARE FOR INFORMATION ONLY. EXISTING RAIL POSTS SHALL BE REMOVED AND REINSTALLED AS NECESSARY TO RE-ALIGN THE RAIL ELEMENTS. EXISTING ANCHOR BOLTS SHALL BE CUT OFF FLUSH WITH CONCRETE. NEW ANCHOR BOLTS SHALL BE DRILLED AND GROUTED IN PLACE.
- THIS WORK SHALL BE PAID FOR AT THE CONTRACT UNIT PRICE PER FOOT FOR REMOVING AND REPLACING EXISTING RAILING.

FILE NAME =	USER NAME = potelyj	DESIGNED - RW	REVISED -	STATE OF ILLINOIS DEPARTMENT OF TRANSPORTATION	ALUMINUM HANDRAIL DETAILS	F.A.P. RTE.	SECTION	COUNTY	TOTAL SHEETS	SHEET NO.	
c:\pwwork\pwwork\potelyj\0405789\0308	26-shi-details.dgn	DRAWN - RW	REVISED -			623	(33BR-2)T	LASALLE	25	19	
MODEL NAME =	PLOT SCALE = 1/8" = 1'-0"	CHECKED - HA	REVISED -			CONTRACT NO. 66E26					
	PLOT DATE = 12/11/2014	DATE -	REVISED -			ILLINOIS FED. AID PROJECT					

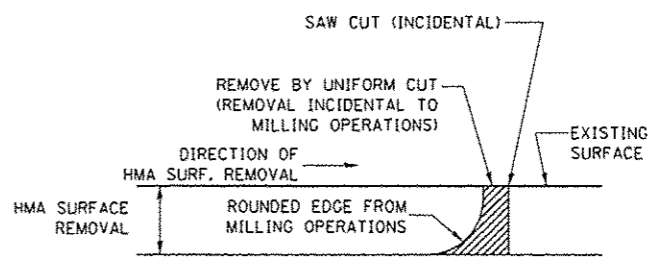


HMA SURFACE REMOVAL AND REPLACEMENT



SECTION THRU PATCH

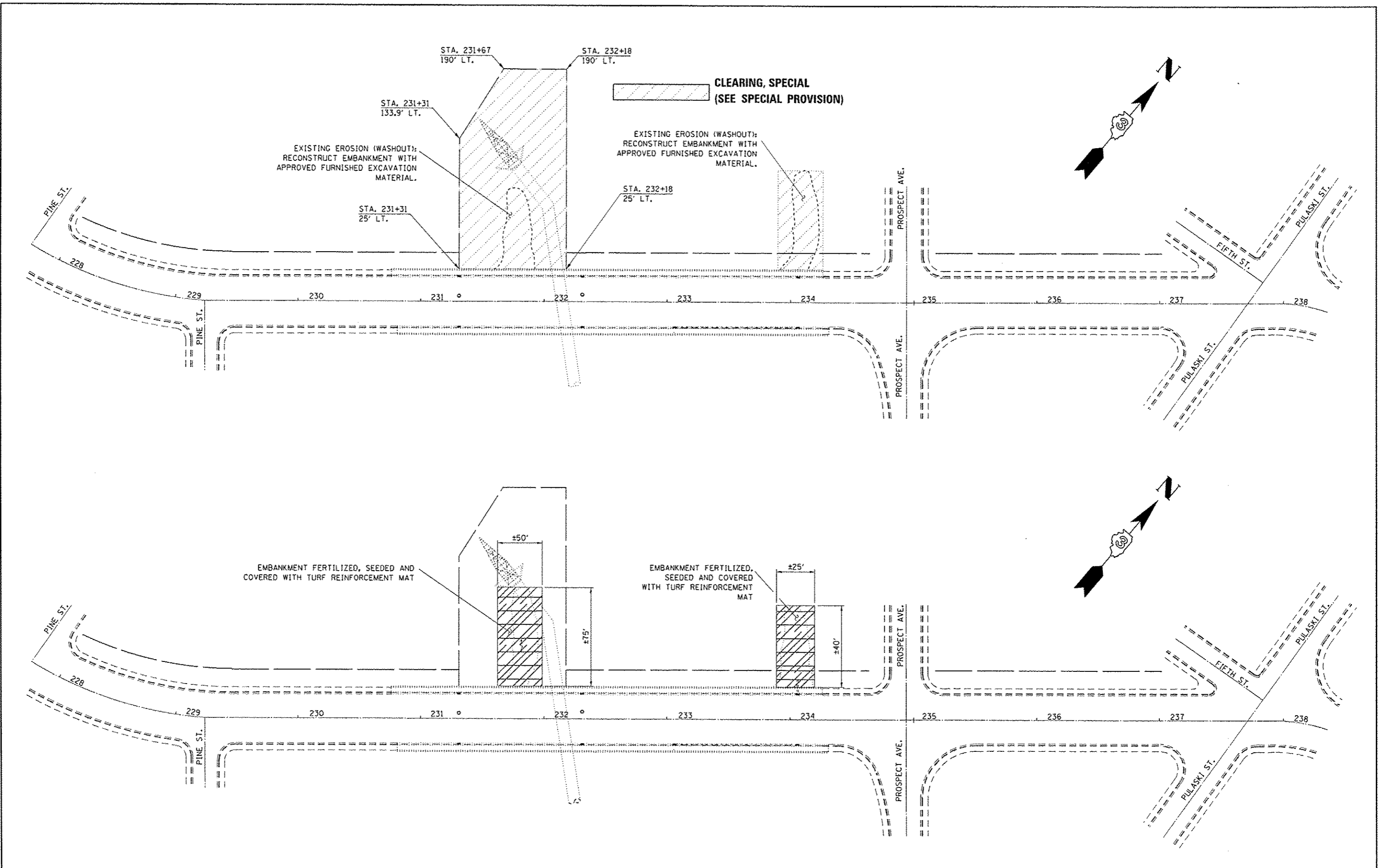
*COST OF REMOVING (COLD MILLING) SURFACE OF CONCRETE PATCH SHALL BE INCLUDED IN THE COST OF HMA SURFACE REMOVAL.



NOTE:
WHEN MILLING OPERATIONS PRODUCE A ROUNDED EDGE, THEN A SAW CUT SHALL BE USED TO MANUFACTURE A PERPENDICULAR EDGE AS SHOWN IN THE DETAIL. THE ENGINEER SHALL BE THE SOLE JUDGE CONCERNING THE USE OF THIS DETAIL

HMA DETAIL AT BUTT JOINTS

FILE NAME *	USER NAME *	DESIGNED - RW	REVISED -	STATE OF ILLINOIS DEPARTMENT OF TRANSPORTATION	HOT-MIX ASPHALT RESURFACING DETAILS	F.A.P. R.T.C. 623	SECTION (33BR-2)T	COUNTY LASALLE	TOTAL SHEETS 25	SHEET NO. 20	
ci:\pw_wprk\prj\dtd\woodshenk\1\0405789\066E26-shr\details.dgn		DRAWN - RW	REVISED -			SCALE: _____	SHEET 1 OF 1 SHEETS	ILLINOIS FED. AID PROJECT	CONTRACT NO. 66E26		
MODEL NAME *		CHECKED - HA	REVISED -			STA. _____	TO STA. _____				
		DATE -	REVISED -								



FILE NAME =	USER NAME = woodshankr	DESIGNED - RW	REVISED -
c:\pwork\pilot\woodshankr\148495789	66E26-shs-details.dgn	DRAWN - RW	REVISED -
	PLOT SCALE = 1/8" = 10'	CHECKED - HA	REVISED -
#MODELNAME#	PLOT DATE = 12/8/2014	DATE -	REVISED -

**STATE OF ILLINOIS
DEPARTMENT OF TRANSPORTATION**

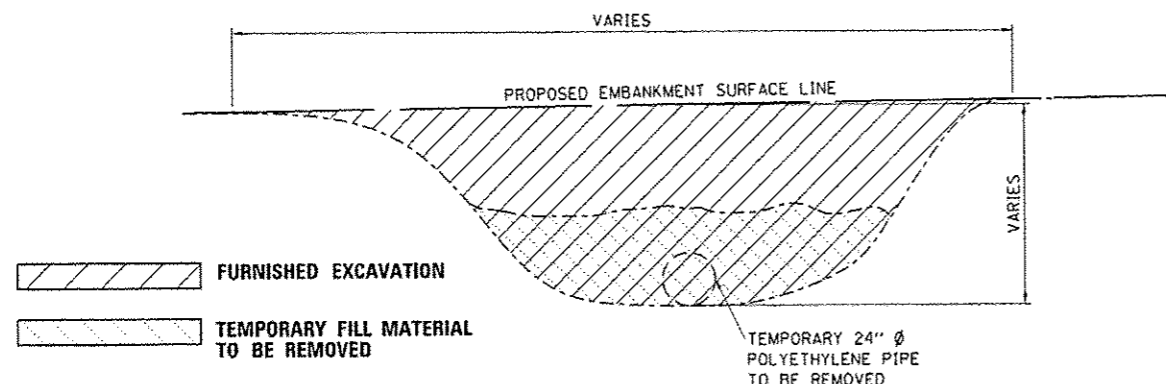
**EMBANKMENT CLEARING AND
EROSION REPAIR DETAILS**

SCALE: _____ SHEET 1 OF 2 SHEETS STA. _____ TO STA. _____

F.A.P. RTE. 623	SECTION 133BR-21T	COUNTY LASALLE	TOTAL SHEETS 25	SHEET NO. 21
CONTRACT NO. 66E26			ILLINOIS FED. AID PROJECT	

NOTE:
SURFACE OF FURNISHED EXCAVATION AREA(S) SHALL BE FERTILIZED, SEEDED AND COVERED WITH A TURF REINFORCEMENT MAT.

NOTE:
THE CONTRACTOR HAS THE OPTION OF REMOVING AND REINSTALLING EXISTING STEEL BIN-TYPE RETAINING WALL PANELS TO FACILITATE IN THE SLOPE REPAIR OPERATIONS. THE CONTRACTOR SHALL EXERCISE EXTREME CARE IN WORKING ADJACENT TO THE PANELS OR REMOVING AND REINSTALLING EXISTING PANELS SO THAT DAMAGE TO THE PANELS DOES NOT OCCUR. IF THE PANELS ARE DAMAGED DUE TO THE CONTRACTORS OPERATIONS, THE DAMAGED PANELS SHALL BE REPLACED AT THE CONTRACTORS EXPENSE.



SECTION THRU SLOPE FAILURE

STEEL BIN-TYPE RETAINING WALLS (SEE SHEET 23 OF 25 SHEETS FOR DETAILS)

STEEL BIN-TYPE RETAINING WALLS SHALL BE BACKFILLED WITH FINE AGGREGATE "SEE SPECIAL PROVISIONS" AT THE FOLLOWING LOCATIONS.

STA. 231+40 TO STA. 231+90 LT.
STA. 234+00 TO STA. 234+10 LT.
STA. 233+00 TO STA. 233+10 RT.

TEMPORARY FILL MATERIAL SHALL BE REMOVED AND PLACED AT LOCATIONS DESIGNATED BY THE ENGINEER. ALL EXCAVATED MATERIALS SHALL REMAIN WITHIN THE LIMITS OF THE RIGHT OF WAY.

EXCAVATED MATERIALS REMOVED OFF RIGHT OF WAY SHALL NOT BE PERMITTED.

FURNISHED EXCAVATION MATERIAL ACCORDING TO SECTION 204 OF THE STANDARD SPECIFICATIONS SHALL BE FURNISHED AND PLACED TO THE LINES AND GRADES SHOWN.

MATCH EXISTING SLOPE

EXISTING SAND FILL MATERIAL

EXISTING 12" Ø CLAY STORM SEWER SHALL BE REMOVED

APPROXIMATE EMBANKMENT SURFACE LINE

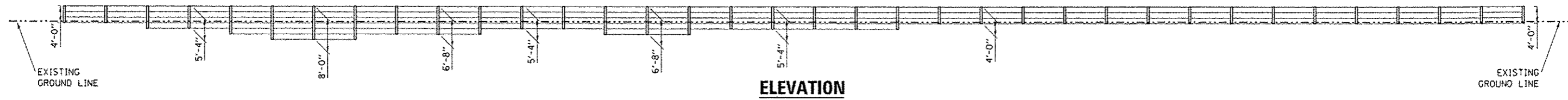
TEMPORARY POLYETHYLENE PIPE DRAIN SHALL BE REMOVED

•THE ENGINEER SHALL DETERMINE EXACT LOCATIONS AND DIMENSION OF SLOPE REPAIR IN THE FIELD AT TIME OF CONSTRUCTION PRIOR TO THE CONTRACTOR BEGINNING SLOPE REPAIR OPERATIONS.

SECTION THRU EMBANKMENT ON NORTH SIDE

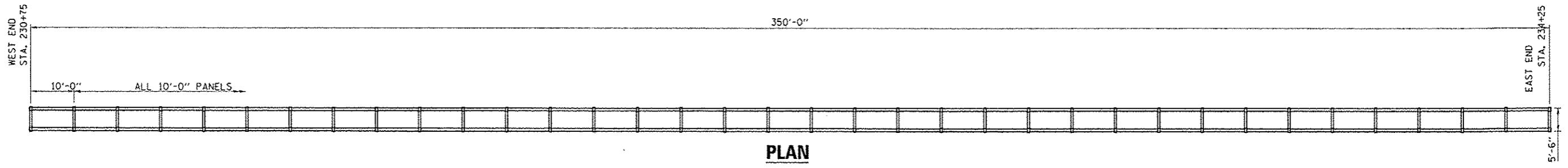
STA. 231+79 LT.

FILE NAME =	USER NAME = woodshankr1	DESIGNED - RW	REVISED -	STATE OF ILLINOIS DEPARTMENT OF TRANSPORTATION	EMBANKMENT CLEARING AND EROSION REPAIR DETAILS	F.A.P. R.T.E. 623	SECTION (338R-2)T	COUNTY LASALLE	TOTAL SHEETS 25	SHEET NO. 22		
ca:\pwork\pwork\woodshankr1\09405789\0366E26-shr-details.dgn	DRAWN - RW	CHECKED - HA	REVISED -			SCALE: _____	SHEET 2 OF 2 SHEETS	STA. _____	TO STA. _____	CONTRACT NO. 66E26		
PLOT SCALE = 59.8980 1/1 in.	DATE -	REVISED -	REVISED -			ILLINOIS FED. AID PROJECT						
PLOT DATE = 12/8/2014												
#MODELVIEW#												



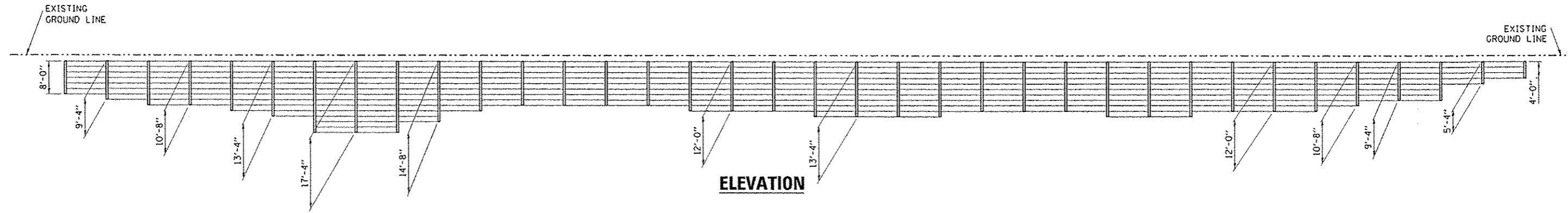
ELEVATION

+75 +85 +95 231+05 +15 +25 +35 +45 +55 +65 +75 +85 +95 232+05 +15 +25 +35 +45 +55 +65 +75 +85 +95 233+05 +15 +25 +35 +45 +55 +65 +75 +85 +95 234+05 +15 +26



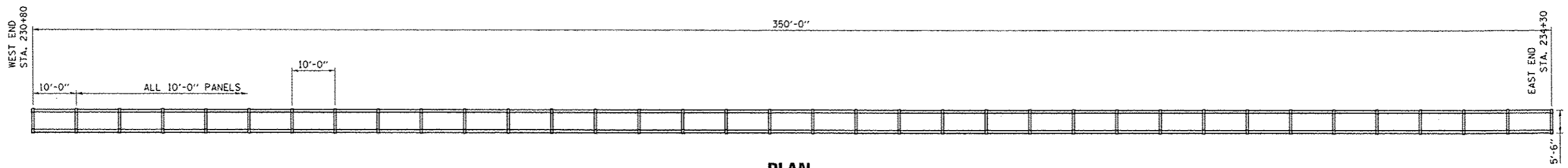
PLAN

**NORTH SIDE
STEEL BIN-TYPE RETAINING WALL**



ELEVATION

+80 +90 231+00 +10 +20 +30 +40 +50 +60 +70 +80 +90 232+00 +10 +20 +30 +40 +50 +60 +70 +80 +90 232+00 +10 +20 +30 +40 +50 +60 +70 +80 +90 232+00 +10 +20 +30

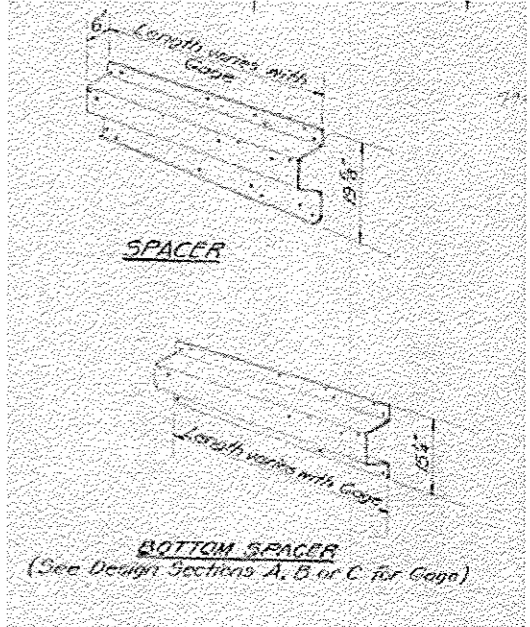
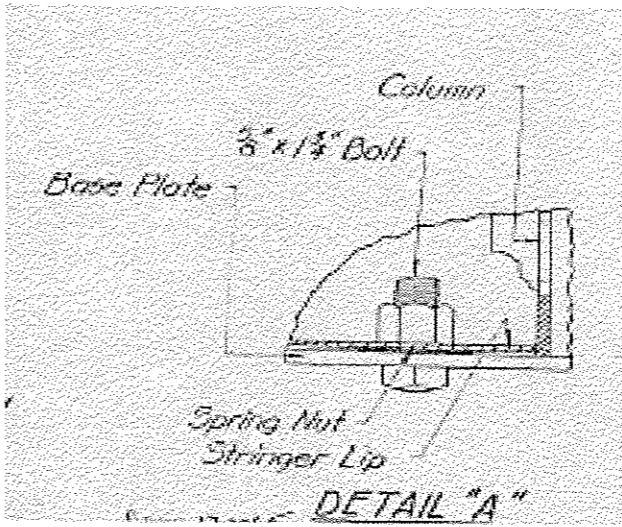
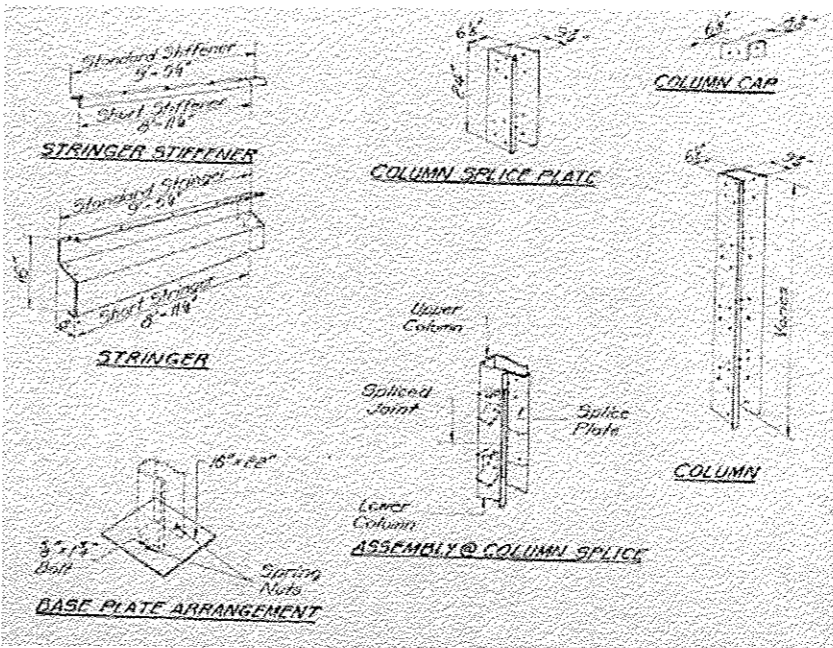
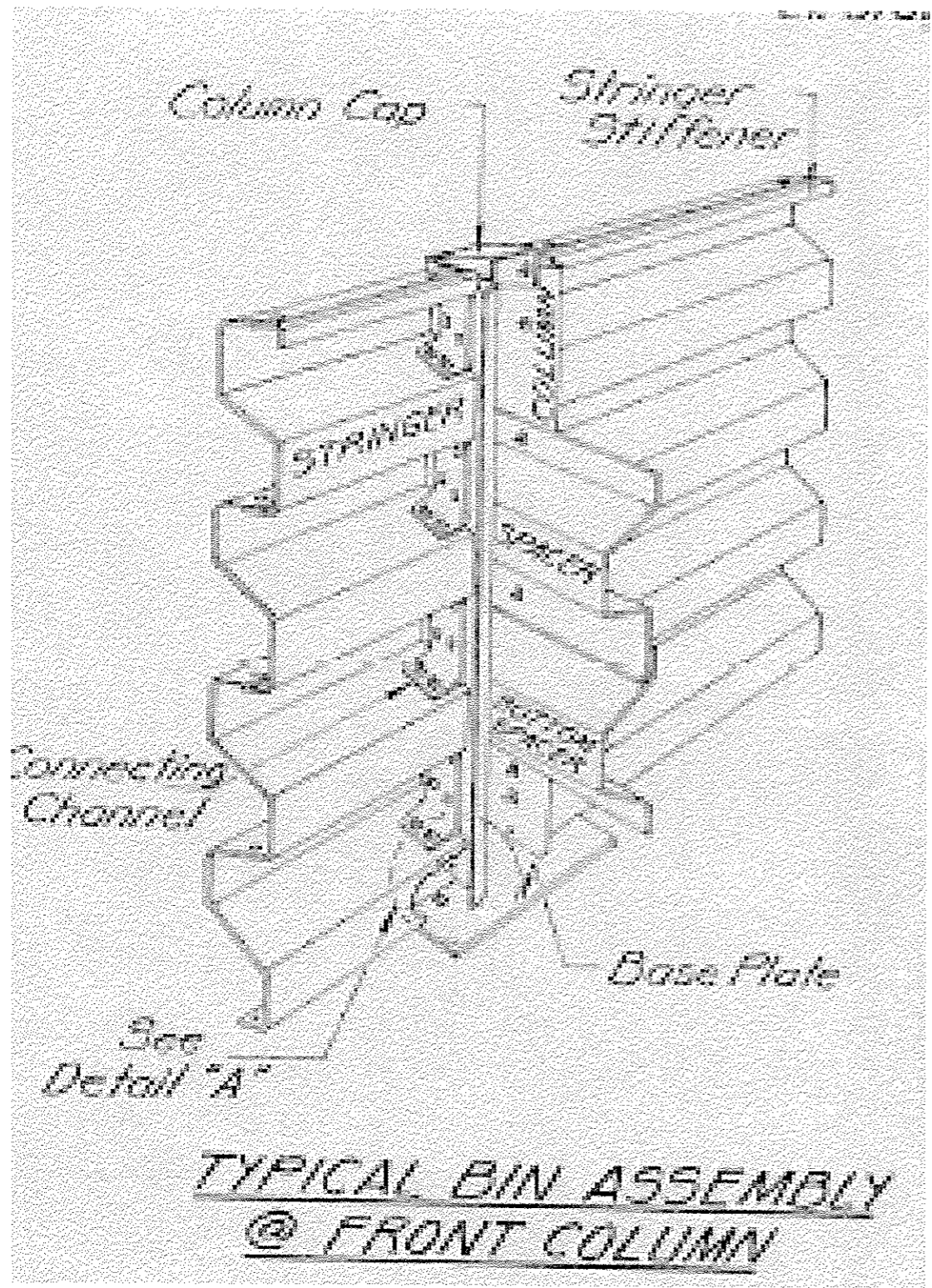


PLAN

**SOUTH SIDE
STEEL BIN-TYPE RETAINING WALL**

FOR INFORMATION ONLY

FILE NAME : c:\pwwork\pudat\woodshenkr\1\0405789\66E26-sht-details.dgn	USER NAME : woodshenkr1	DESIGNED - RW	REVISED -	STATE OF ILLINOIS DEPARTMENT OF TRANSPORTATION	STEEL BIN-TYPE RETAINING WALL	F.A.P. RT# 623	SECTION (33BR-2)T	COUNTY LASALLE	TOTAL SHEETS 25	SHEET NO. 23	CONTRACT NO. 66E26		
MODEL NAME :	PL01 SCALE : 1/8" = 1'-0"	DRAWN - RW	REVISED -			SCALE: _____	SHEET 1 OF 2 SHEETS	STA. _____	TO STA. _____	ILLINOIS FED. AID PROJECT			
	PL01 DATE : 12/8/2014	CHECKED - HA	REVISED -										
		DATE -	REVISED -										



FOR INFORMATION ONLY

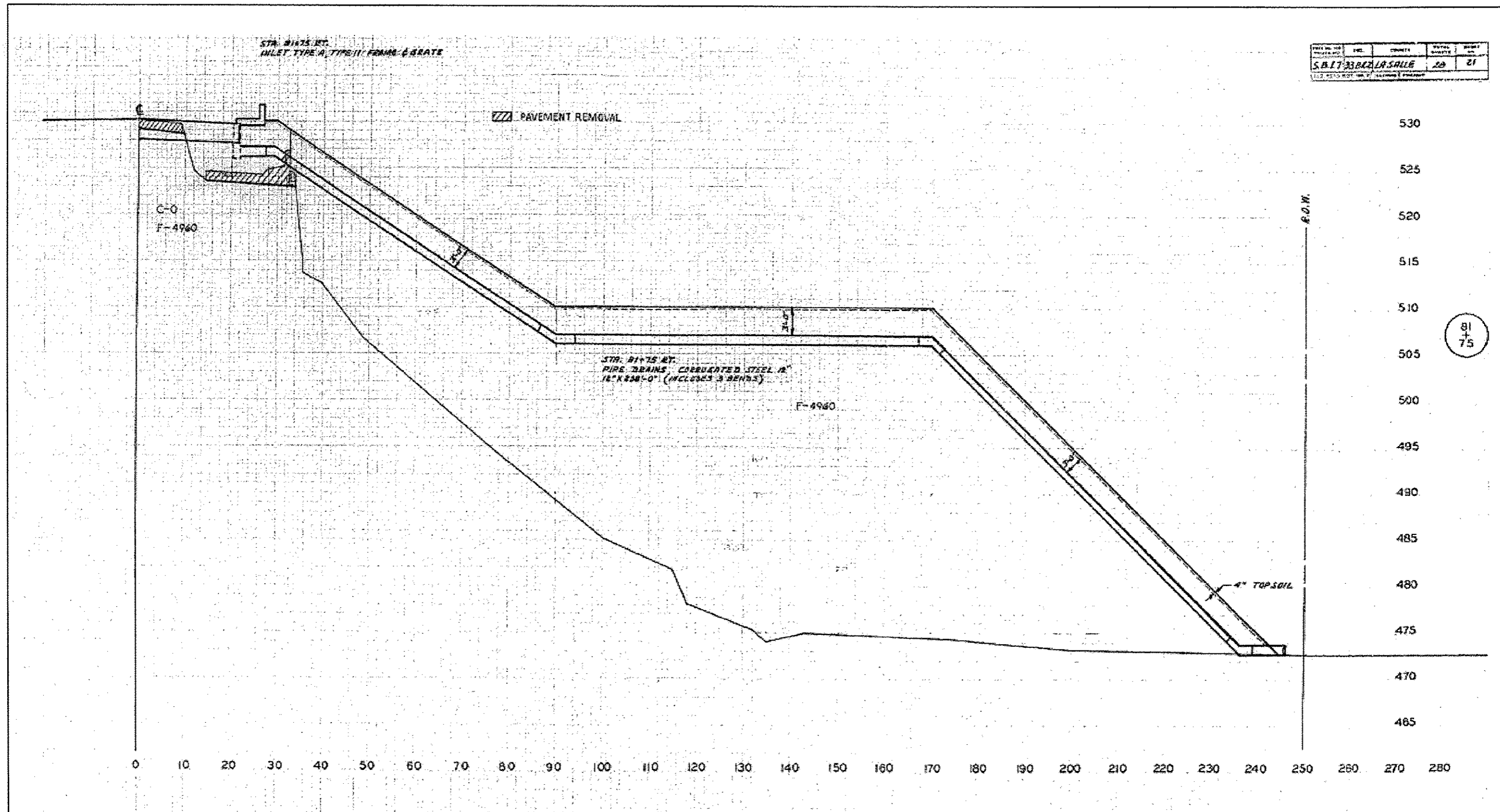
FILE NAME :	USER NAME : woodshankr1	DESIGNED - RW	REVISED -
c:\pwwork\pwwork\woodshankr1\d0405789\766E26-shr-details.dgn		DRAWN - RW	REVISED -
	PLOT SCALE = 99.8780 1/2 in.	CHECKED - HA	REVISED -
#MODELNAME#	PLOT DATE = 12/8/2014	DATE -	REVISED -

STATE OF ILLINOIS
DEPARTMENT OF TRANSPORTATION

STEEL BIN-TYPE RETAINING WALL
SCALE: _____ SHEET 2 OF 2 SHEETS STA. _____ TO STA. _____

F.A.P. RTE. 623	SECTION (33BR-2)T	COUNTY LASALLE	TOTAL SHEETS 25	SHEET NO. 24
CONTRACT NO. 66E26				ILLINOIS FED. AID PROJECT

PROJECT NO.	SHEET NO.	TOTAL SHEETS	DATE
SAIT 33BR-21T	20	21	



81
75

FOR INFORMATION ONLY

FILE NAME :	USER NAME :	DESIGNED :	REVISED :
c:\pwwork\pridas\woodshankr1\0405789	woodshankr1	RW	-
	366E26.eht_details.dgn	DRAWN :	REVISED :
		RW	-
	PLOT SCALE = 1/8" = 1' - 0"	CHECKED :	REVISED :
		HA	-
#MODEL NAME :	PLOT DATE = 12/07/2014	DATE :	REVISED :
		-	-

**STATE OF ILLINOIS
DEPARTMENT OF TRANSPORTATION**

EXISTING 12" CMP SOUTH SIDE

SCALE: _____ SHEET 2 OF 2 SHEETS STA. _____ TO STA. _____

F.A.P. RT#	SECTION	COUNTY	TOTAL SHEETS	SHEET NO.
623	(33BR-21T)	LASALLE	25	25
			CONTRACT NO. 66E26	
[ILLINOIS] FED. AID PROJECT				