

F.A. RTE.	SECTION	COUNTY	TOTAL SHEETS	SHEET NO.
VAR. D4 PAVEMENT MARKING 2015		VARIOUS	5	1
		ILLINOIS	CONTRACT NO. 68C38	

1. COVER SHEET
2. SUMMARY OF QUANTITIES
3. SCHEDULE OF QUANTITIES & JOB SPECIFIC NOTES
- 4-5. TYPICAL PAVEMENT MARKINGS STANDARD 780001-D4

DEPARTMENT OF TRANSPORTATION

DIVISION OF HIGHWAYS

PROPOSED HIGHWAY PLANS

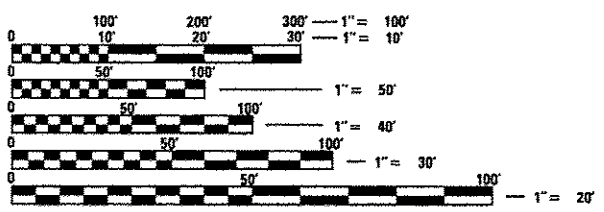
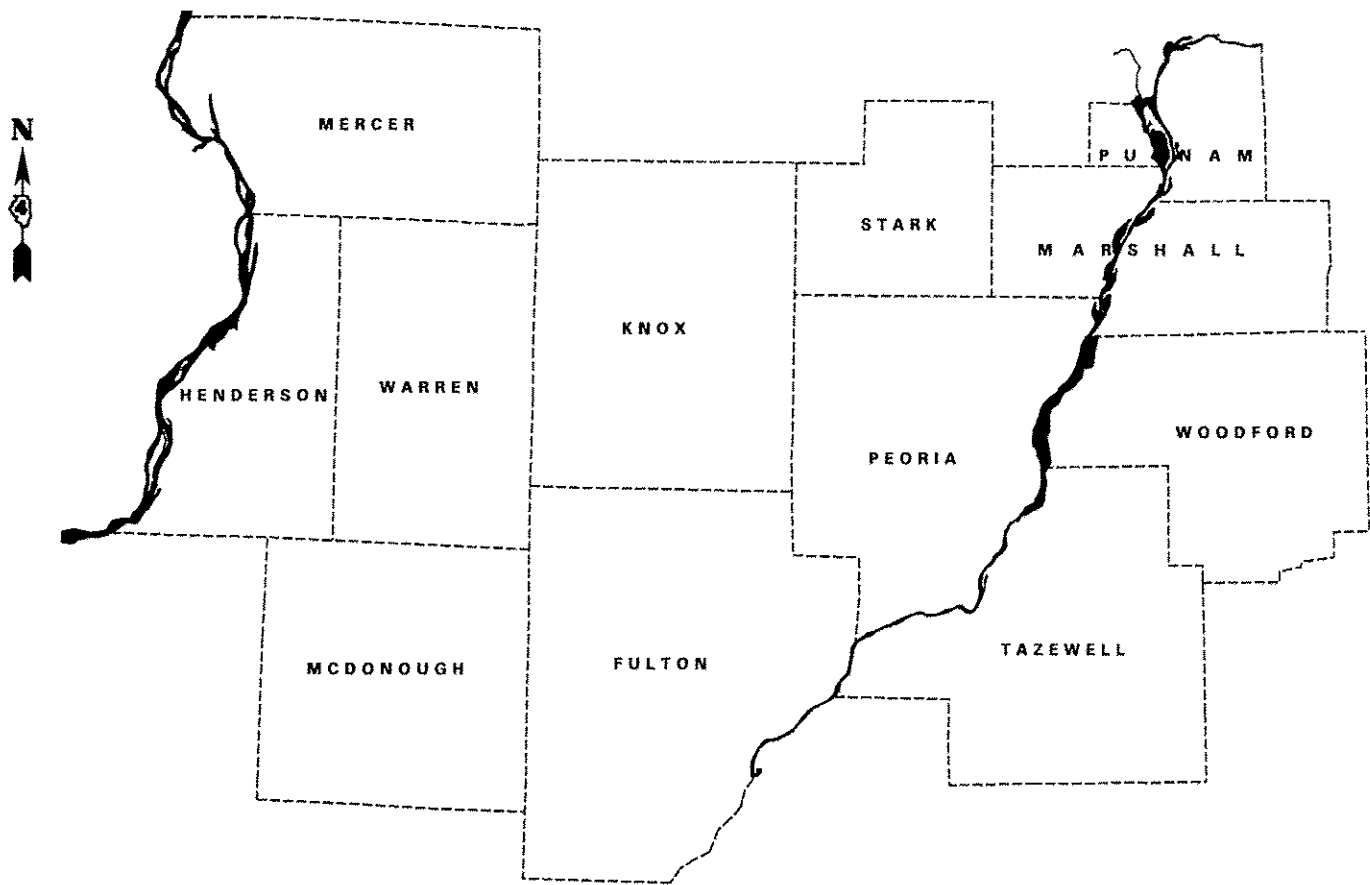
VARIOUS ROUTES
SECTION D4 PAVEMENT MARKING 2015

CONTRACT MAINTENANCE
VARIOUS COUNTIES

C-94-029-15

HIGHWAY STANDARDS

- 701311-03
- 701426-07
- 701427-03
- 701901-04
- 780001-05



FULL SIZE PLANS HAVE BEEN PREPARED USING STANDARD ENGINEERING SCALES. REDUCED SIZED PLANS WILL NOT CONFORM TO STANDARD SCALES. IN MAKING MEASUREMENTS ON REDUCED PLANS, THE ABOVE SCALES MAY BE USED.

J.U.L.I.E.
JOINT UTILITY LOCATION INFORMATION FOR EXCAVATION
1-800-892-0123
OR 811

PROJECT ENGINEER MIKE LEWIS (309) 671-3454
PROJECT MANAGER RAYMOND SAMARA (309) 671-3459
CATALOG NO. 035213-00D
CONTRACT NO. 68C38

GROSS LENGTH = N/A
NET LENGTH = N/A

DESCRIPTION:
THIS PROJECT CONSISTS OF APPLYING PAINT PAVEMENT MARKING ON VARIOUS ROUTES IN VARIOUS COUNTIES OF DISTRICT 4

STATE OF ILLINOIS
DEPARTMENT OF TRANSPORTATION
DIVISION OF HIGHWAYS

SUBMITTED Dec 5 2014
Kensil G. Gourette
DEPUTY DIRECTOR OF HIGHWAYS, REGION ENGINEER

Jan 30 2015
John D. Baranzoni P.E.
ENGINEER OF DESIGN AND ENVIRONMENT

Jan 30 2015
Orner Osman P.E.
DIRECTOR OF HIGHWAYS, CHIEF ENGINEER

**PRINTED BY THE AUTHORITY
OF THE STATE OF ILLINOIS**

PAINT PAVEMENT MARKING

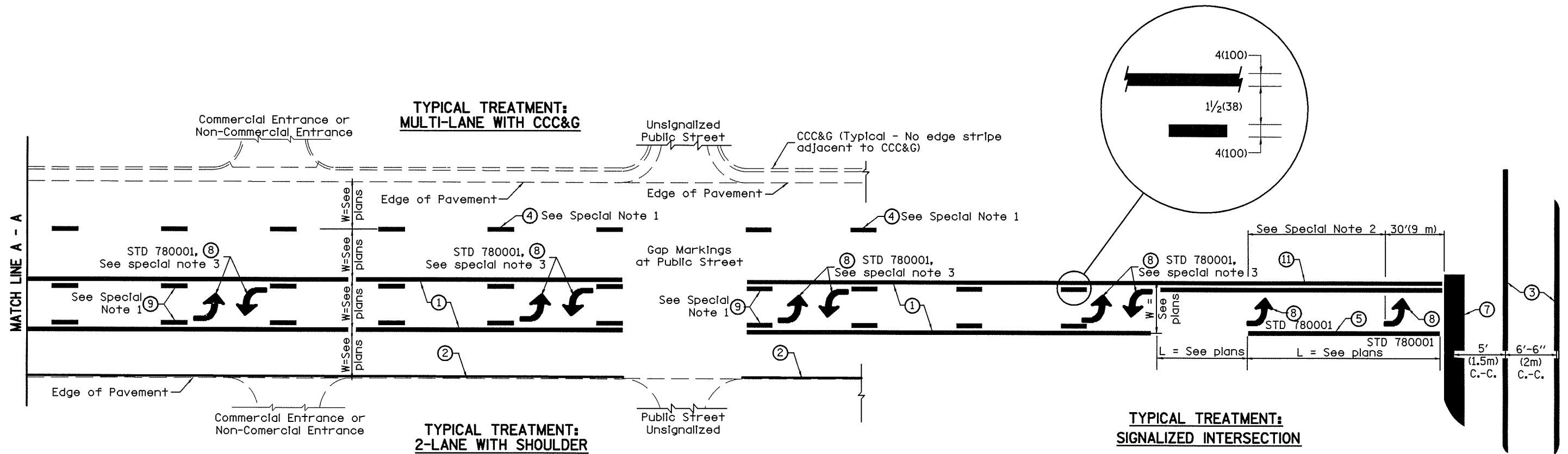
COUNTY	4"		6"	8"
	WHITE	YELLOW	WHITE	WHITE
FULTON	1951114	903015	1063	3994
HENDERSON	869232	410793	5532	7223
HENRY	42218	9863	0	0
KNOX	878074	548894	37721	38279
MARSHALL	243422	109875	0	3068
MCDONOUGH	707050	284494	9490	1194
MERCER	278567	102713	0	3857
PEORIA	927157	752177	107748	54322
PUTNAM	9000	1170	0	0
SCHUYLER	46592	23088	0	0
STARK	130403	63732	0	81
TAZEWELL	548000	370708	39808	23780
WOODFORD	240451	111150	0	2412
SUB-TOTAL	6871280	3691672	201362	138210
TOTAL	10562952		201362	138210

MOBILIZATION	
LOCATION	L SUM
VAR COUNTIES	1

JOB SPECIFIC NOTES
 FOR PAVEMENT MARKING
 LOCATIONS CONTACT:
 BILL HARRMAN 309-693-5176
 OR
 RANDY HARTZ 309-734-3721

DESIGNER NOTES:

1. Include State Standard 780001 (Typical Pavement Markings)



**FLUSH PAVED MEDIAN: TWO-WAY LEFT TURN LANE
WITH ONE-WAY LEFT TURN LANE AT SIGNALIZED INTERSECTION**

TYPICAL PAVEMENT MARKING LEGEND

(Note: This is a District Standard Legend. Some elements may not apply to specific project.)

- ① 4(100) Solid (Yellow)
- ② 4(100) Solid (White)
- ③ 2-6(150) Crosswalk @ 6'-6" (2m)min C.-C. (White)
2-8(200) Crosswalk @ 6'-6" (2m)min C.-C. (White) (When traffic signals are present.)
- ④ 6(150) Skip-Dash (White) (See Special Note 1)
- ⑤ 8(200) Solid (White)
- ⑥ 12(300) Diagonal (White) (Item ⑥ is shown on Std. 780001)
- ⑦ 24(600) Stop Bar (White)
- ⑧ Letters & Arrows (See Std. 780001 and Special Notes 2 & 3)
- ⑨ 4(100) Skip-Dash (Yellow) (See Special Note 1)
- ⑩ 12(300) Diagonal (Yellow) (See Table A)
- ⑪ 4(100) Double Solid (Yellow) (See Table A)

SPECIAL NOTES

1. Skip-Dash markings will be centered between both ends of city blocks and shall be placed in alignment transversely across the pavement.
2. The following shall apply to arrows located in one-way left turn lanes:
 - A. A minimum of two (2) arrows is required.
 - B. The maximum spacing between arrows is 80' (24 m).
 - C. Arrows shall be evenly spaced if three (3) or more are required.
3. The following shall apply to arrow pairs located in two-way left turn lanes:
 - A. A minimum of two (2) arrow pairs is required.
 - B. The maximum spacing between arrow pairs is 200' (61 m).
 - C. Arrow pairs shall be evenly spaced if three (3) or more are required.
 - D. The spacing between BI Directional Left Turn Arrows is 33' (10 m).

GENERAL NOTES

1. Refer to State Standard 780001 for additional Pavement Markings including letters & arrows.
2. See Plans for Pavement Markings adjacent to curbed islands and medians, and through lane reductions.

01-01-97	RENUM. F-8.03, NEW REVISION BOX	T.P.	10-16-06	REVISED TO 2007 SPEC.	STATE OF ILLINOIS DEPARTMENT OF TRANSPORTATION	TYPICAL PAVEMENT MARKINGS	F.A. RTE.	SECTION	COUNTY	TOTAL SHEETS	SHEET NO.
02-07-97	ADD BI DIRECTIONAL DIMENSION	J.A.					VAR D4 PAVEMENT MARKING 2015	VARIOUS	5	4	
10-97	CORRECT BI DIRECTIONAL DIMENSION	J.A.									
08-02	ADD CROSSWALK DMNS. WITH T.S.	M.A.									
NOT TO SCALE						SHT. 1 OF 2 CADD STD. 780001-D4		CONTRACT NO. 68C38			
						FED. ROAD DIST. NO.		ILLINOIS FED. AID PROJECT			

