

STATE OF ILLINOIS  
DEPARTMENT OF TRANSPORTATION  
DIVISION OF HIGHWAYS

**PROPOSED  
IMPROVEMENTS**

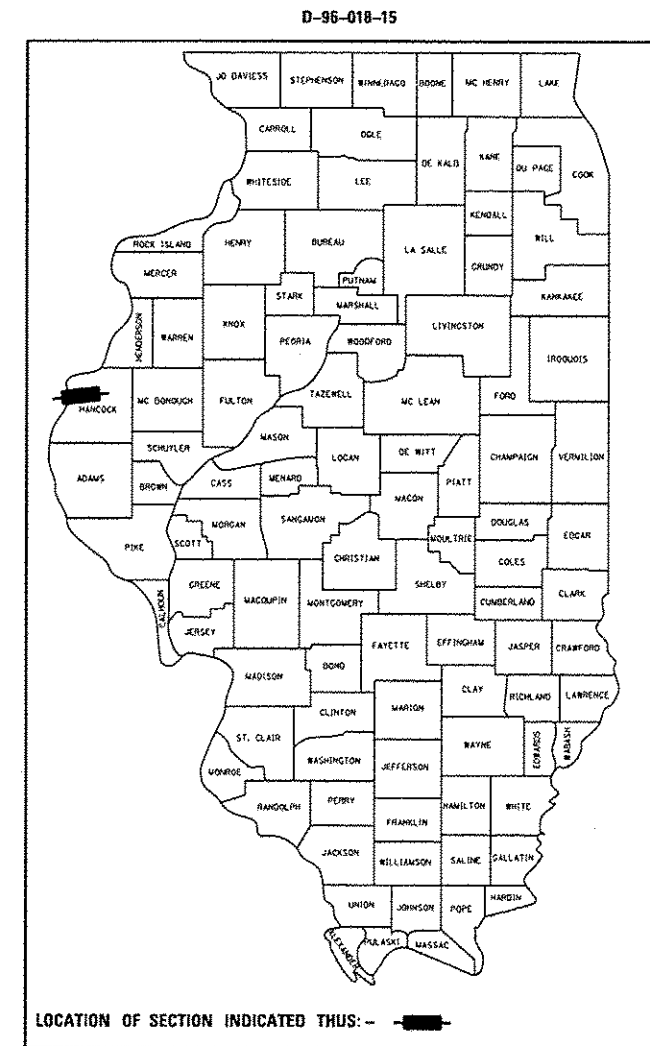
FAP ROUTE 315 (US RTE 136)  
SECTION (23)I-1

RESURFACING  
HANCOCK COUNTY

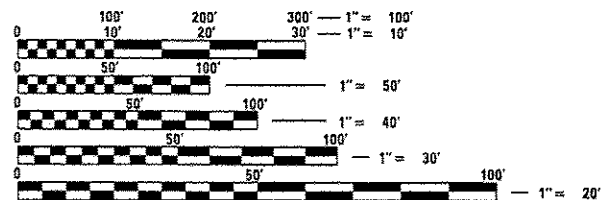
C-96-018-15

F.A.P. RTE.	SECTION	COUNTY	TOTAL SHEETS	SHEET NO.
315	(23) I-1	HANCOCK	7	1
		ILLINOIS	CONTRACT NO. 72H45	

FOR INDEX OF SHEETS, SEE SHEET NO. 2

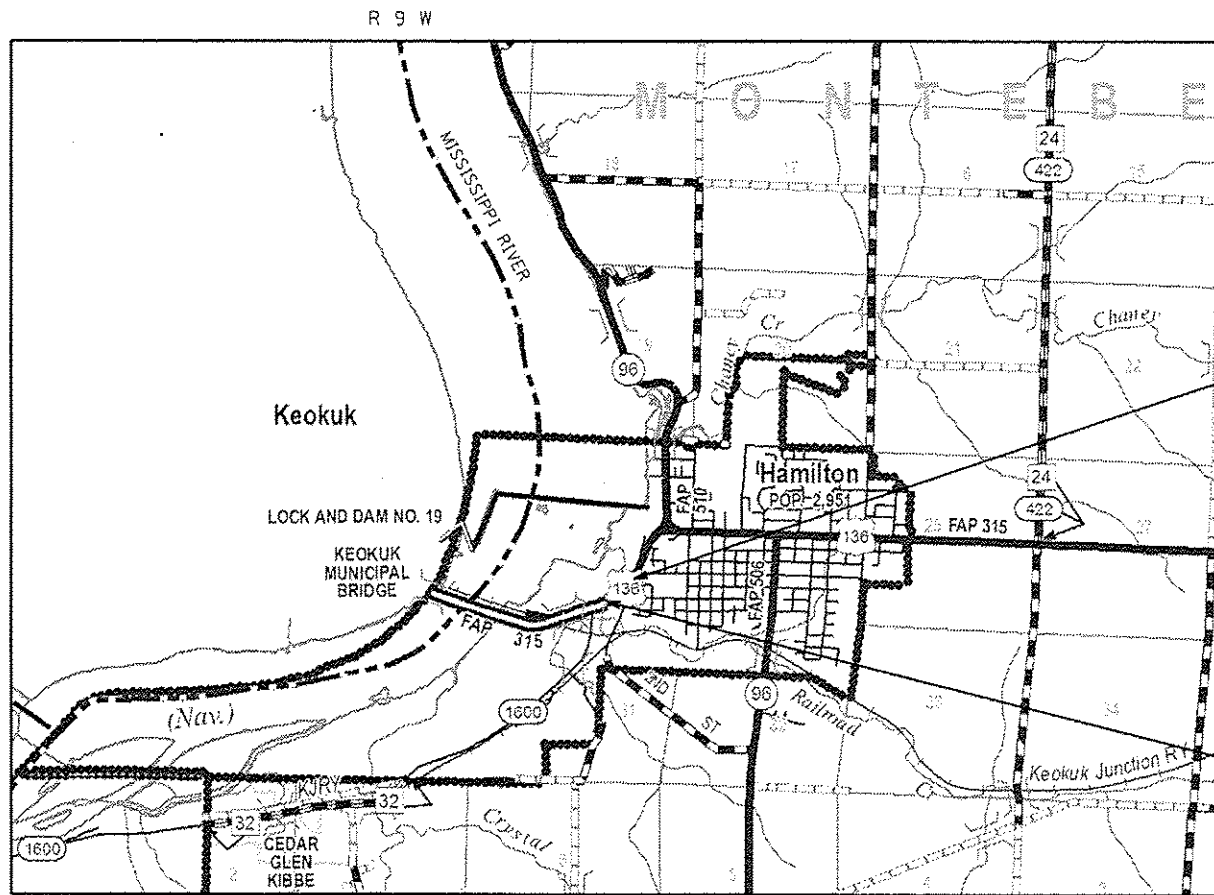


LOCATION OF SECTION INDICATED THUS: - [shaded rectangle] -



FULL SIZE PLANS HAVE BEEN PREPARED USING STANDARD ENGINEERING SCALES. REDUCED SIZED PLANS WILL NOT CONFORM TO STANDARD SCALES. IN MAKING MEASUREMENTS ON REDUCED PLANS, THE ABOVE SCALES MAY BE USED.

J.U.L.I.E.  
JOINT UTILITY LOCATION INFORMATION FOR EXCAVATION  
1-800-892-0123  
OR 811



LOCATION MAP

NET LENGTH = 861.43 FT. = 0.163 MILE



END PROJECT  
STA. 127+50.00

BEGIN PROJECT  
STA. 118+88.57

FAP ROUTE 315 (US RTE 136)  
ADT (2013) = 12400  
PV = 93.34% SU = 3.43%, MU = 3.23%  
SPEED LIMIT = 30 MPH (POSTED)

STATE OF ILLINOIS  
DEPARTMENT OF TRANSPORTATION  
DIVISION OF HIGHWAYS

SUBMITTED *October 29 20 14*  
*Roger Z. Druker*  
DEPUTY DIRECTOR OF HIGHWAYS, REGION ENGINEER

*Jan 30 20 15*  
*Dan D. Baranzelli P.E.*  
ENGINEER OF DESIGN AND ENVIRONMENT

*Jan 30 20 15*  
*Omer Osman P.E.*  
DIRECTOR OF HIGHWAYS, CHIEF ENGINEER

PROJECT ENGINEER  
PROJECT MANAGER

CONTRACT NO. 72H45

PRINTED BY THE AUTHORITY  
OF THE STATE OF ILLINOIS



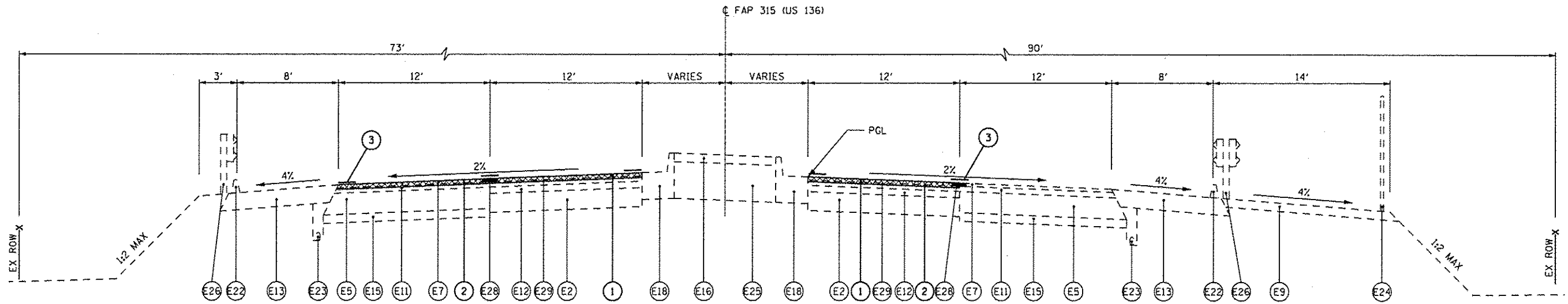
100% STATE  
0005

CODE NO.	ITEM	UNIT	TOTAL QUANTITY
40600275	BITUMINOUS MATERIALS (PRIME COAT)	POUNDS	3000
40600990	TEMPORARY RAMP	SQ YD	150
40603340	HOT-MIX ASPHALT SURFACE COURSE, MIX D, N70	TON	438
44000157	HOT-MIX ASPHALT SURFACE REMOVAL 2"	SQ YD	3,906
67100100	MOBILIZATION	L SUM	1
70102625	TRAFFIC CONTROL AND PROTECTION, STANDARD 701606	L SUM	1
70102635	TRAFFIC CONTROL AND PROTECTION, STANDARD 701701	L SUM	1
70300100	SHORT-TERM PAVEMENT MARKING	FOOT	100

100% STATE  
0005

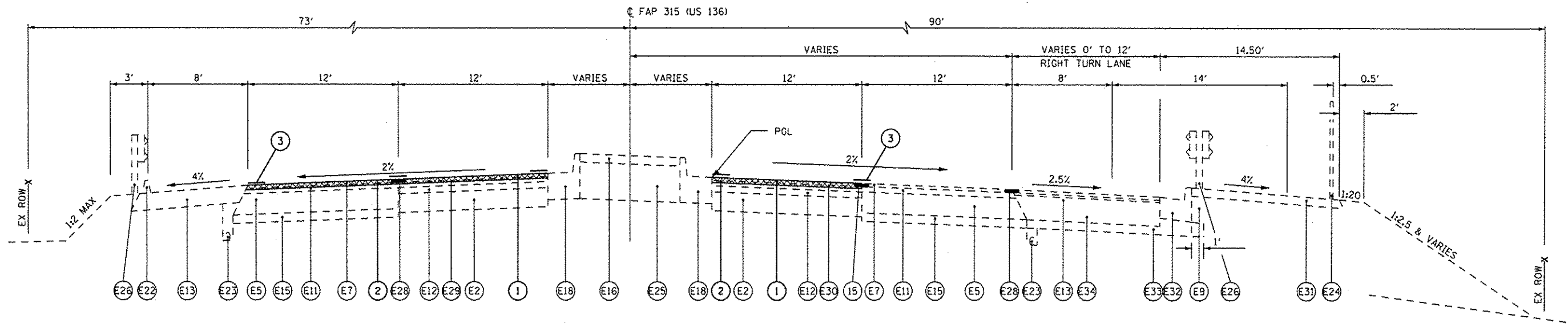
CODE NO.	ITEM	UNIT	TOTAL QUANTITY
* 78001120	PAINT PAVEMENT MARKING - LINE 5"	FOOT	3,380
* 78004220	PREFORMED PLASTIC PAVEMENT MARKING, TYPE B - INLAID -LINE 5"	FOOT	220
* 78004230	PREFORMED PLASTIC PAVEMENT MARKING, TYPE B - INLAID -LINE 6"	FOOT	150
* 78300200	PREFORMED PLASTIC PAVEMENT MARKING, TYPE B - INLAID -LINE 24"	FOOT	48
* 78100100	RAISED REFLECTIVE PAVEMENT MARKER	EACH	14
78300200	RAISED REFLECTIVE PAVEMENT MARKER REMOVAL	EACH	14

\* SPECIALTY ITEM



**TYPICAL FAP 315 (US 136) SECTION**

STA 1+316.500 TO STA 1+395.475 (METRIC)  
 STA 118+88.57 TO STA 121+47.63 (ENGLISH)

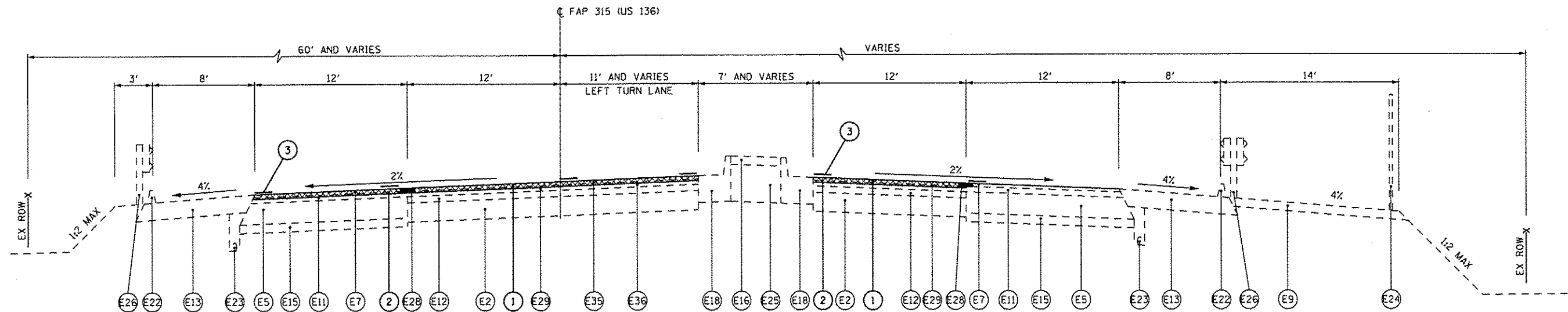


**TYPICAL FAP 315 (US 136) SECTION**

STA 1+395.475 TO STA 1+516.220 (METRIC)  
 STA 121+47.63 TO STA 125+41.33 (ENGLISH)

NOTE: LEGEND ON SHEET 5

FILE NAME *	USER NAME * sherpsta	DESIGNED - DMS	REVISED -	<b>STATE OF ILLINOIS DEPARTMENT OF TRANSPORTATION</b>	<b>TYPICAL SECTION F.A.P. 315 (US 136)</b>		F.A.P. RTE. 315	SECTION (231)-1	COUNTY HANCOCK	TOTAL SHEETS 7	SHEET NO. 4	
c:\pwwork\pwwork\sherpsta\d2416716\0672-45-eh14-5-typical.dgn		DRAWN - DMS	REVISED -		SCALE: _____	SHEET 1	OF 2 SHEETS	STA. _____	TO STA. _____	CONTRACT NO. 72H45		
Default		CHECKED -	REVISED -		ILLINOIS FED. AID PROJECT							
		DATE -	REVISED -									



**TYPICAL FAP 315 (US 136) SECTION**

STA 1+516.220 TO STA 1+583.823 (METRIC)

STA 125+41.33 TO STA 127+50.00 (ENGLISH)

**EXISTING LEGEND**

- (E1) EXISTING 225 mm - 150 mm - 225 mm PCC PAVEMENT
- (E2) EXISTING PCC PAVEMENT, 229 mm
- (E3) EXISTING PCC BASE COURSE WIDENING, 229 mm
- (E4) EXISTING BITUMINOUS CONCRETE BASE COURSE WIDENING, 229 mm
- (E5) EXISTING BITUMINOUS BASE COURSE, 254 mm
- (E6) EXISTING BITUMINOUS CONCRETE SURFACE, 32 mm
- (E7) EXISTING BITUMINOUS CONCRETE SURFACE, 38 mm
- (E8) EXISTING BITUMINOUS CONCRETE SURFACE, 75 mm
- (E9) EXISTING BITUMINOUS CONCRETE SURFACE, 102 mm
- (E10) EXISTING BITUMINOUS CONCRETE BINDER, 44 mm
- (E11) EXISTING BITUMINOUS CONCRETE BINDER, 64 mm
- (E12) EXISTING BITUMINOUS CONCRETE LEVELING BINDER, VARIABLE THICKNESS
- (E13) EXISTING BITUMINOUS SHOULDER, 203 mm
- (E14) EXISTING AGGREGATE SHOULDER, 203 mm
- (E15) EXISTING SUBBASE GRANULAR MATERIAL, TYPE A, 102 mm
- (E16) EXISTING CONCRETE MEDIAN SURFACE, 102 mm
- (E17) EXISTING COMBINATION CONCRETE CURB AND GUTTER, TYPE B-15.60
- (E18) EXISTING COMBINATION CONCRETE CURB AND GUTTER, TYPE B-22.60

- (E19) EXISTING GUTTER
- (E20) EXISTING TYPE B GUTTER
- (E21) EXISTING GUTTER SPECIAL
- (E22) EXISTING BITUMINOUS CURB
- (E23) EXISTING PIPE UNDERDRAIN, 102 mm
- (E24) EXISTING CHAIN LINK FENCE, 1.5 m
- (E25) EXISTING SAND FILL
- (E26) EXISTING GUARDRAIL
- (E27) EXISTING SIDEROAD PAVEMENT
- (E28) EXISTING STRIP REFLECTIVE CRACK CONTROL TREATMENT
- (E29) EXISTING LEVELING BINDER, 1/4"
- (E30) EXISTING LEVELING BINDER, 1/2"
- (E31) EXISTING INCIDENTAL BITUMINOUS SURFACING, 100 mm
- (E32) EXISTING COMBINATION CONCRETE CURB AND GUTTER, TYPE B-15.60
- (E33) EXISTING SUB-BASE GRANULAR MATERIAL, TYPE B (100 mm MIN)
- (E34) EXISTING BITUMINOUS CONCRETE BASE COURSE WIDENING, 300 mm (WHEN WIDTH < 1.8 m)  
EXISTING BITUMINOUS BASE COURSE, 300 mm (WHEN WIDTH > 1.8 m)
- (E35) EXISTING BITUMINOUS CONCRETE SURFACE COURSE, 1/2"
- (E36) EXISTING LEVELING BINDER (MACHINE METHOD), 3/4"

**PROPOSED LEGEND**

- (1) PROPOSED HMA SURFACE COURSE, MIX "D", N70, 2"
- (2) PROPOSED BITUMINOUS SURFACE REMOVAL, 2"
- (3) PROPOSED PAVEMENT MARKING, 5"

FILE NAME = c:\pwwork\pwwork\sharptd\2014\16718\0572\43-sh14-3-typical.dgn	USER NAME = sharptd	DESIGNED - DMS	REVISED -	<b>STATE OF ILLINOIS DEPARTMENT OF TRANSPORTATION</b>	<b>TYPICAL SECTIONS F.A.P. 315 (US 136)</b>		F.A.P. RTE. 315	SECTION (231)-1	COUNTY HANCOCK	TOTAL SHEETS 7	SHEET NO. 5
	PLOT SCALE = 48,0000' / 1"	CHECKED -	REVISED -				CONTRACT NO. 72H45				
Default	PLOT DATE = Oct-08-2014 08:03:51AM	DATE -	REVISED -	SCALE: _____ SHEET 2 OF 2 SHEETS		STA. _____ TO STA. _____	ILLINOIS FED. AID PROJECT				

MAINLINE IMPROVEMENTS											
BITUMINOUS MATERIAL (PRIME COAT) RATE - 0.00038 T/SY AGGREGATE (PRIME COAT) RATE - 0.002 T/SY BITUMINOUS SURFACE / BINDER (112 LBS) RATE - 0.056 T/SY*IN					40600275 BITUMINOUS MATERIALS (PRIME COAT)	40603340 HMA SURFACE COURSE MIX "D", N 70 d=2"	44000157 HMA SUFRACE REMOVAL, 2"	78100100 RAISED REFL. PAVEMENT MARKER EACH	78300200 RAISED REFL. PAVEMENT MARKER REMOVAL EACH		
LOCATION STATION TO STATION	LENGTH FT	WIDTH FT	AREA SQ YD	TON	TON	SQ YD	EACH	EACH			
STA 117+88.57 TO STA. 127+50.00	WBPL, WBDL	861.43	24.00	2,297.15	0.87	257.3	2,297.15	8	8		
STA 124+41.72 TO STA. 127+50.00	WBTL LN, MED	308.28	VAR.	460	0.18	51.5	460.0	4	4		
STA. 117+88.57 TO STA. 127+50.00	EBTL	861.43	12.00	1,148.57	0.44	128.6	1,148.57	2	2		
TOTAL:					1.5	438	3,906	14	14		

40600990			
TEMPORARY RAMP (SQ YD)			
LOCATION	LENGTH FT	WIDTH FT	AREA SQ YD
STATION TO STATION - LT/RT			
STA. 118+88.57 LT	6.7	24.0	17.8
STA. 118+88.58 RT	6.7	12.0	8.9
STA. 127+50.0 LT	6.7	36	26.8
STA. 127+50.0 RT	6.7	12.0	8.9
TOTAL:			149.7
USE:			150.00

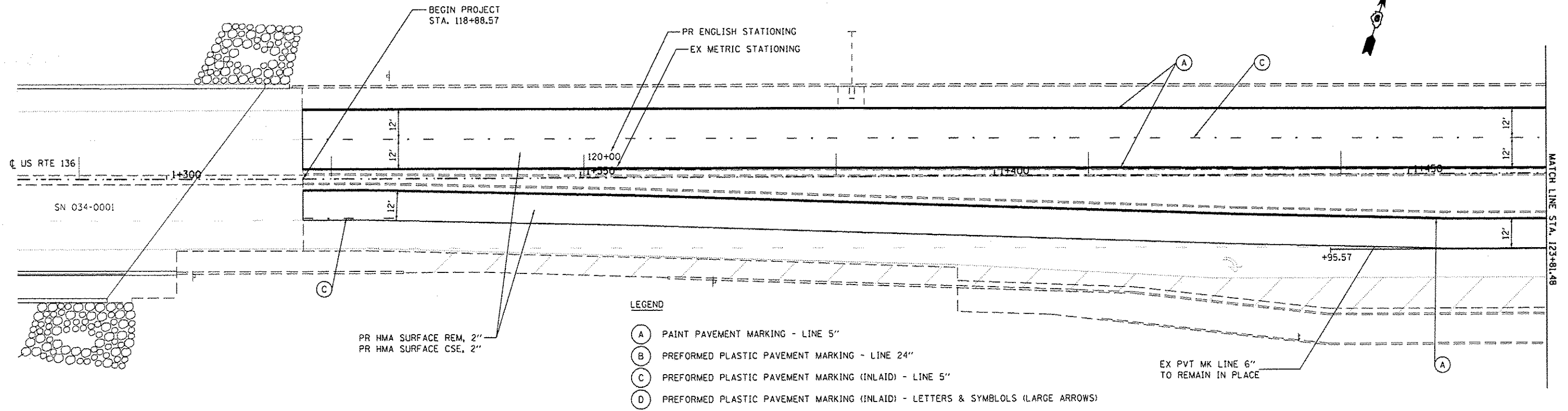
78001120					
PAINT PAVEMENT MARKING - LINE 5" (FOOT)					
LOCATION	LENGTH FT	COLOR YELLOW/ WHITE	EDGELINE SOLID FT		
STA. 118+88.57 TO STA. 127+50.0 LT DL	861.43	WHITE	861.43		
STA. 118+88.57 TO STA. 124+88.57 LT PL	553.15	YELLOW	600.00		
STA. 125+80.00 TO STA. 127+50.0 LT PL	150.00	YELLOW	170.00		
STA. 118+88.57 TO STA. 124+76.91 RT TL	588.34	YELLOW	588.34		
STA. 125+90.00 STA. 127+50.0 RT TL	160.00	YELLOW	160.00		
TOTAL:			2,380.00		

LOCATION	LENGTH FT	70300100 SHORT TERM PAV'T MARK FOOT
STA. 118+88.57 TO STA 124+49.3 LT CL	560.82	56.00
STA. 126+00.00 TO STA 127+50.0 LT CL	150.00	15.00
STA. 118+88.57 TO STA 119+78.57 RT CL	90.00	9.00
TOTAL:		80.00
USE:		100.00

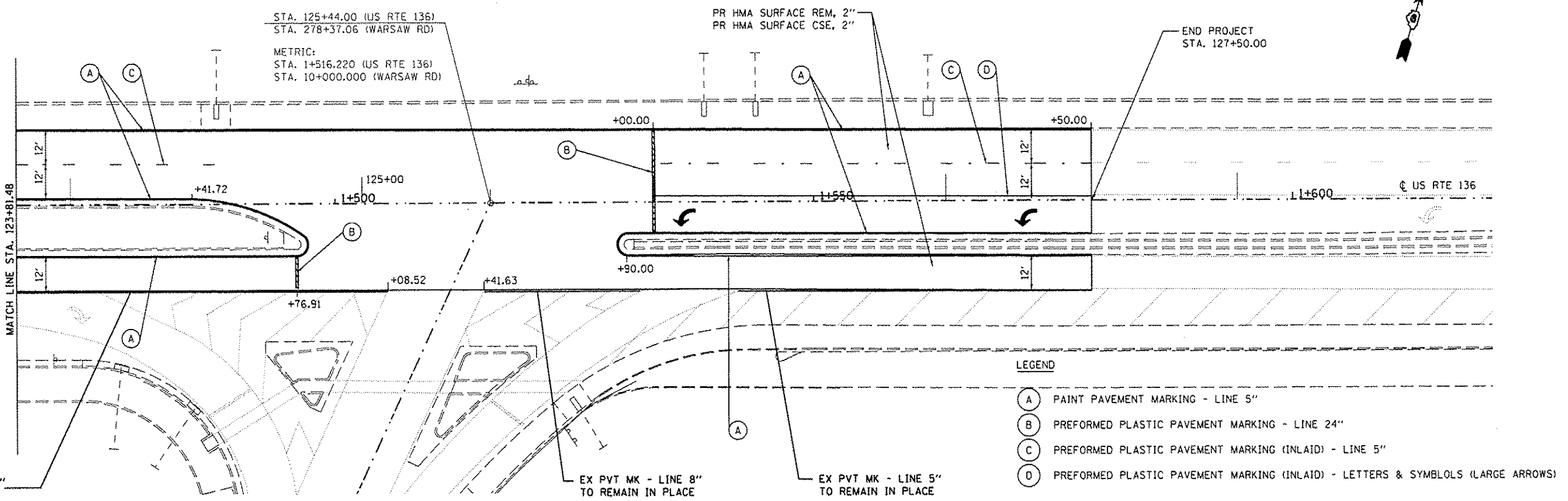
78006180		
PERFORMED PLASTIC PAVEMENT MARKING LINE 24" (FOOT)		
LOCATION	TYPE	LENGTH WHITE FT
STA. 124+76.91 RT	STOP BAR	12.00
STA. 126+00.00 RT	STOP BAR	36.00
TOTAL:		48.00
USE:		48

78006120				
PERFORMED THERMOPLASTIC PAVEMENT MARKING - LINE 5" (FOOT)				
LOCATION	LENGTH FT	COLOR YELLOW/ WHITE	CENTERLINE SKIP-DASH FT	
STA. 118+88.57 TO STA. 124+49.39 LT CL	560.82	WHITE	150	
STA. 126+00.00 TO STA. 127+50.0 LT CL	150.00	WHITE	40	
STA. 118+88.57 TO STA. 119+34.98 RT CL	46.41	YELLOW	30	
TOTAL:			220.00	

78004230			
PERFORMED THERMOPLASTIC PAVEMENT MARKING - LINE 6" (FOOT)			
LOCATION	LENGTH FT	COLOR YELLOW/ WHITE	EDGELINE SOLID FT
STA. 125+00.00 TO STA. 127+50.00 WBTL	150	WHITE	150.00
TOTAL:			150.00



- LEGEND**
- (A) PAINT PAVEMENT MARKING - LINE 5"
  - (B) PREFORMED PLASTIC PAVEMENT MARKING - LINE 24"
  - (C) PREFORMED PLASTIC PAVEMENT MARKING (INLAID) - LINE 5"
  - (D) PREFORMED PLASTIC PAVEMENT MARKING (INLAID) - LETTERS & SYMBOLOS (LARGE ARROWS)



- LEGEND**
- (A) PAINT PAVEMENT MARKING - LINE 5"
  - (B) PREFORMED PLASTIC PAVEMENT MARKING - LINE 24"
  - (C) PREFORMED PLASTIC PAVEMENT MARKING (INLAID) - LINE 5"
  - (D) PREFORMED PLASTIC PAVEMENT MARKING (INLAID) - LETTERS & SYMBOLOS (LARGE ARROWS)

FILE NAME = c:\pwwork\pawid\sherp\td\va8416716\067245\sh7-ran.dgn	USER NAME = sherp\td	DESIGNED - DMS	REVISED -	<b>STATE OF ILLINOIS DEPARTMENT OF TRANSPORTATION</b>	<b>PLAN SHEET F.A.P. 315 (US 136)</b>	F.A.P. RTE. 315	SECTION (231)-1	COUNTY HANCOCK	TOTAL SHEETS 7	SHEET NO. 7
	PLOT SCALE = 48.2822' / 1"	CHECKED -	REVISED -			CONTRACT NO. 72H45	ILLINOIS FED. AID PROJECT			
PLOT DATE = Dec-29-2014 07:07:33AM	DATE -	REVISED -	SCALE: SHEET OF SHEETS STA. TO STA.							