

03-06-2015 LETTING ITEM 114

STATE OF ILLINOIS  
DEPARTMENT OF TRANSPORTATION  
DIVISION OF HIGHWAYS

**PROPOSED  
HIGHWAY PLANS**

FAP ROUTE 766 (ILL 32)  
SECTION D7 PAVT PRSV 2015-1

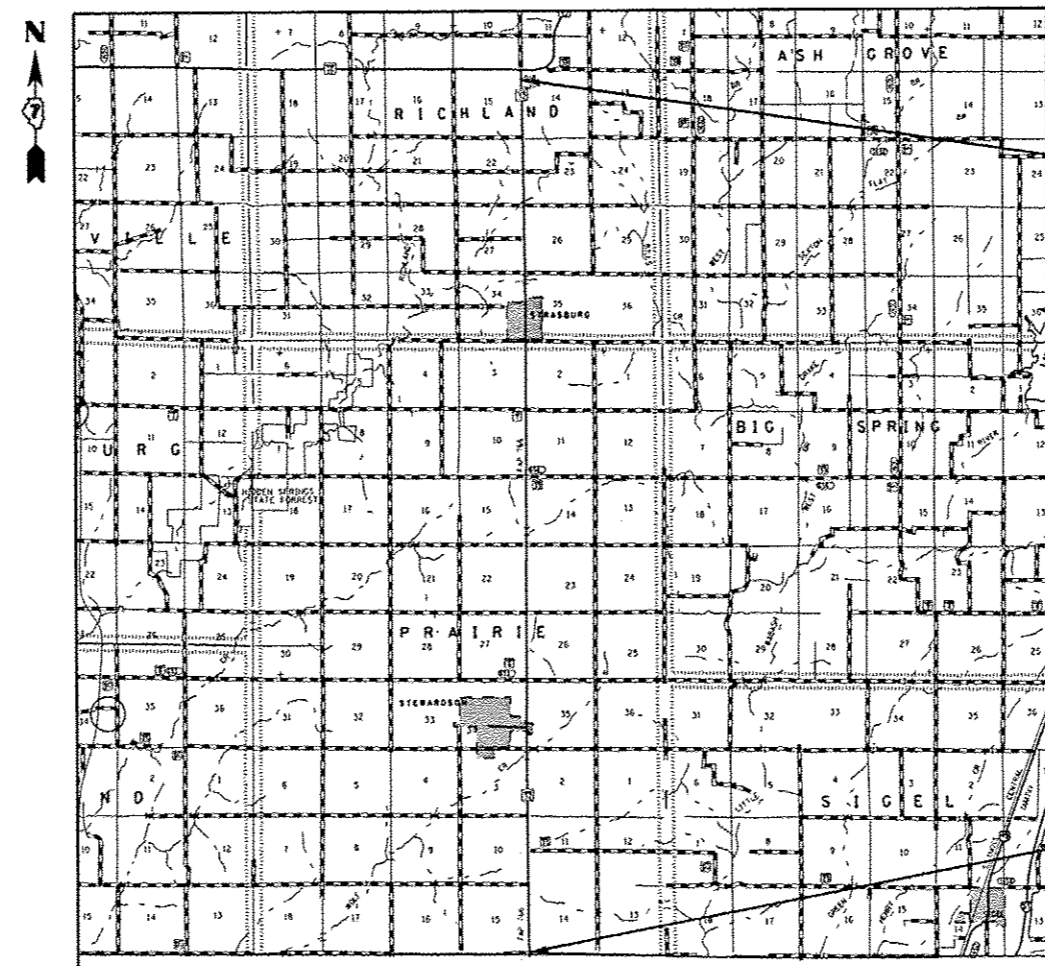
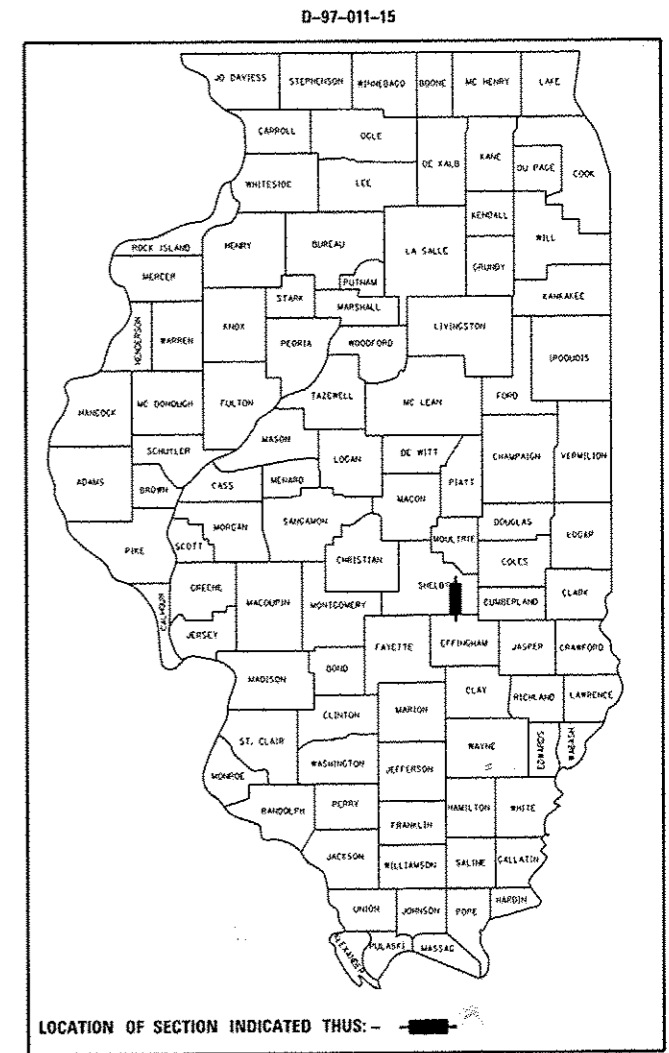
CAPE SEAL  
SHELBY COUNTY

C-97-017-15

F.A.P. RTE.	SECTION	COUNTY	TOTAL SHEETS	SHEET NO.
766	D7 PAVT PRSV 2015-1	SHELBY	5	1
		ILLINOIS	CONTRACT NO. 74706	

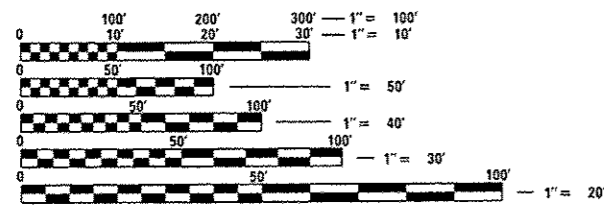
FOR INDEX OF SHEETS, SEE SHEET NO. 2

ADT (2013) = 3550



PROJECT BEGINS  
STA 13+00

PROJECT ENDS  
STA 688+10



FULL SIZE PLANS HAVE BEEN PREPARED USING STANDARD ENGINEERING SCALES. REDUCED SIZED PLANS WILL NOT CONFORM TO STANDARD SCALES. IN MAKING MEASUREMENTS ON REDUCED PLANS, THE ABOVE SCALES MAY BE USED.

J.U.L.I.E.  
JOINT UTILITY LOCATION INFORMATION FOR EXCAVATION  
1-800-892-0123  
OR 811

PROJECT ENGINEER: MARK DAUGHERTY  
PROJECT MANAGER: JOYCE HEMMEN

CONTRACT NO. 74706

GROSS LENGTH = 67,510.0 FT. = 12.786 MILE  
NET LENGTH = 67,510.0 FT. = 12.786 MILE

STATE OF ILLINOIS  
DEPARTMENT OF TRANSPORTATION  
DIVISION OF HIGHWAYS

SUBMITTED DECEMBER 4, 2014

*Roger L. Orshelless*  
DEPUTY DIRECTOR OF HIGHWAYS, REGION ENGINEER

*John D. Baranzelli PE, Inc.*  
ENGINEER OF DESIGN AND ENVIRONMENT

*Jan 30, 2015*  
*Omer Osman PE, Inc.*  
DIRECTOR OF HIGHWAYS, CHIEF ENGINEER

**PRINTED BY THE AUTHORITY  
OF THE STATE OF ILLINOIS**

GENERAL NOTES

THIS SECTION SHALL BE CONSTRUCTED IN ACCORDANCE WITH THE PLANS; THE "STANDARD SPECIFICATIONS FOR ROAD AND BRIDGE CONSTRUCTION" ADOPTED JANUARY 1, 2012; THE "SUPPLEMENTAL SPECIFICATIONS AND RECURRING SPECIAL PROVISIONS" INDICATED ON THE CHECK SHEET, AND "THE SPECIAL PROVISIONS" INCLUDED IN THIS PROPOSAL.

THE PROPOSED WORK IS LOCATED ON ILL 32 IN SHELBY COUNTY FROM ILL 16 TO THE EFFINGHAM COUNTY LINE.

THE WORK INCLUDED IN THIS SECTION CONSISTS OF APPLYING CAPE SEAL TO IL 32, PLUS ANY OTHER NECESSARY WORK TO COMPLETE THE SECTION.

FOR THE MICROSURFACING, THE AGGREGATE GRADATION FOR THE A-1 BITUMINOUS SURFACE TREATMENT SHALL BE CRUSHED STONE, CA 16 AND FRICTION AGGREGATE MIXTURE C.

PAVEMENT MARKING SHALL BE APPLIED IN ACCORDANCE WITH SECTION 780 OF THE STANDARD SPECIFICATIONS. SHORT TERM PAVEMENT MARKING SHALL BE APPLIED TO THE A-1 TREATMENT AND THE CAPE SEAL. PAINT SHALL BE USED FOR THE CENTERLINE AND TAPE SHALL BE USED FOR THE DIAGONALS ON THE SHOULDER. THE CENTERLINE STRIPES FOR SHORT TERM PAVEMENT MARKING SHALL BE 10 FOOT LONG AT 40 FOOT CENTERS. THE QUANTITY FOR PAINT PAVEMENT MARKING LINE 4" IS MADE UP OF 132406 FEET WHITE AND 18388 FEET YELLOW.

INDEX OF SHEETS

SHEET NO. DESCRIPTION

- 1 COVER SHEET
- 2 INDEX OF SHEETS & GENERAL NOTES
- 3 SUMMARY OF QUANTITIES
- 4 TYPICAL SECTIONS
- 5 SCHEDULE AND LOCATION MAP

THE FOLLOWING STANDARDS ARE A PART OF THESE PLANS AND ARE INCLUDED FOLLOWING SHEET NUMBER 5:

- 701301-04 LANE CLOSURE, 2L, 2W, SHORT TIME OPERATIONS
- 701306-03 LANE CLOSURE, 2L, 2W, SLOW MOVING OPERATIONS DAY ONLY, FOR SPEEDS >= 45 MPH
- 701311-03 LANE CLOSURE, 2L, 2W, MOVING OPERATIONS - DAY ONLY
- 701901-04 TRAFFIC CONTROL DEVICES
- 780001-05 TYPICAL PAVEMENT MARKINGS
- 781001-03 TYPICAL APPLICATIONS OF RAISED REFLECTIVE PAVEMENT MARKERS

FILE NAME =	USER NAME = steffennk	DESIGNED -	REVISED -	<b>STATE OF ILLINOIS DEPARTMENT OF TRANSPORTATION</b>	<b>GENERAL NOTES &amp; INDEX OF SHEETS</b>	F.A.P. RTE.	SECTION	COUNTY	TOTAL SHEETS	SHEET NO.
c:\pwork\pedit\steffennk\0413028\07	4706-shr-gannote.dgn	DRAWN -	REVISED -			766	DT PAVT PRSV 2015-1	SHELBY	5	2
	PLOT SCALE = 1/8" = 100.0000' / in.	CHECKED -	REVISED -			CONTRACT NO. 74706				
Default	PLOT DATE = 12/8/2014	DATE -	REVISED -			SCALE:	SHEET OF SHEETS STA. TO STA.	[ILLINOIS] FED. AID PROJECT		

100% STATE

SUMMARY OF QUANTITIES			TOTAL QUANTITIES	CONSTRUCTION TYPE CODE		
CODE NO	ITEM	UNIT		0005		
67100100	MOBILIZATION	L SUM	1	1		
70100460	TRAFFIC CONTROL AND PROTECTION, STANDARD 701306	L SUM	1	1		
70300100	SHORT TERM PAVEMENT MARKING	FOOT	38700	38700		
70300220	TEMPORARY PAVEMENT MARKING - LINE 4"	FOOT	150794	150794		
70301000	WORK ZONE PAVEMENT MARKING REMOVAL	SQ FT	1648	1648		
* 78001110	PAINT PAVEMENT MARKING - LINE 4"	FOOT	150794	150794		
* 78100100	RAISED REFLECTIVE PAVEMENT MARKER	EACH	844	844		
78300200	RAISED REFLECTIVE PAVEMENT MARKER REMOVAL	EACH	844	844		
X7015005	CHANGEABLE MESSAGE SIGN	CAL DA	28	28		
Z0049799	PROTECTING OR RESETTING SURVEY MARKERS	EACH	18	18		
Z0064265	CAPE SEAL	SQ YD	195029	195029		
11						

\* SPECIALTY ITEM

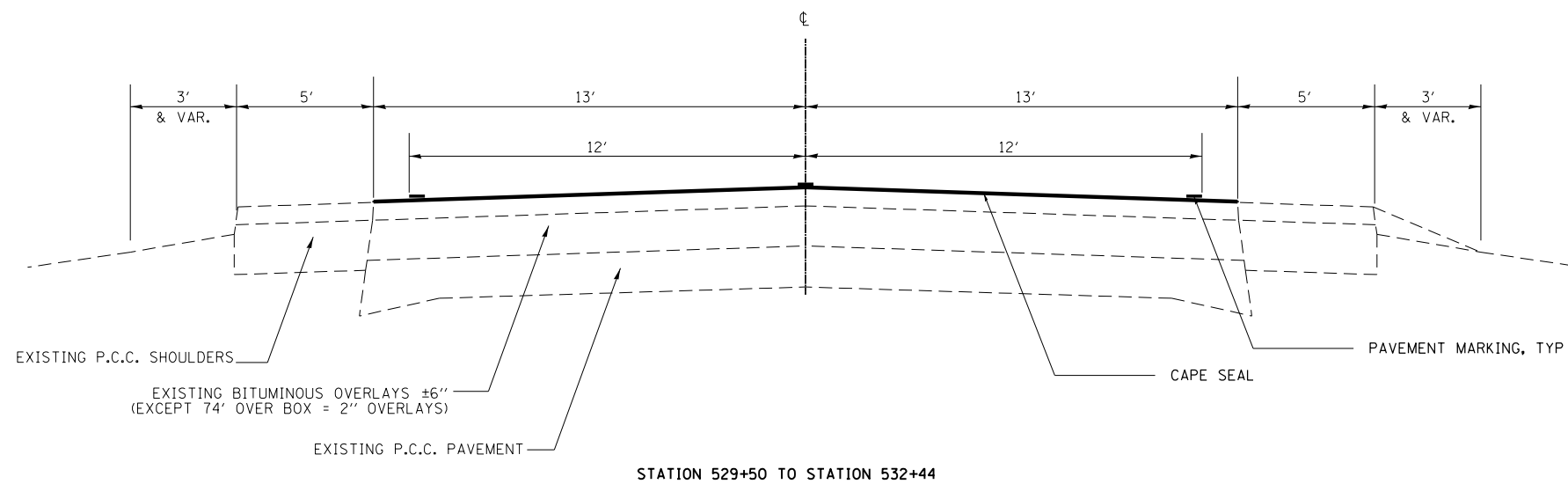
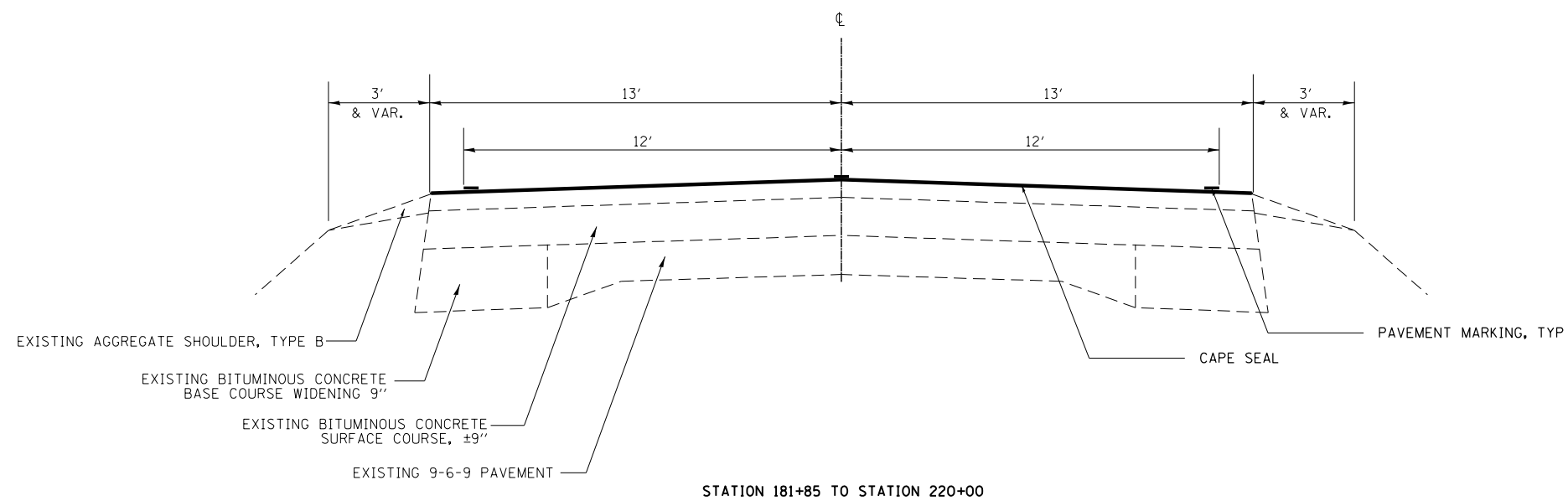
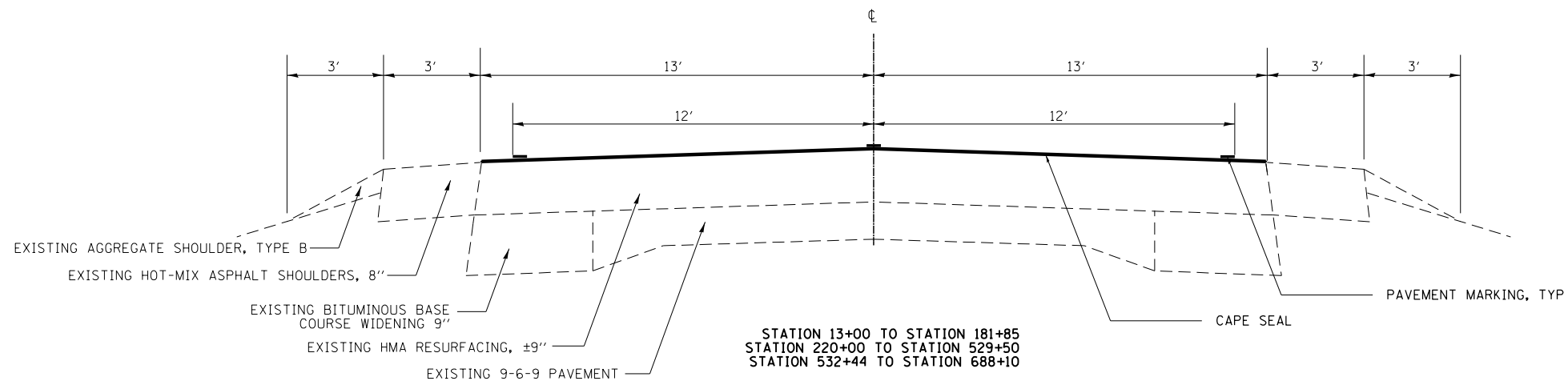
FILE NAME =	USER NAME = steffannk	DESIGNED -	REVISED -
c:\pwork\psidoc\steffannk\08410820\0774706-shr-xog.dgn		DRAWN -	REVISED -
		CHECKED -	REVISED -
		DATE -	REVISED -
Default	PLOT DATE = 12/8/2014		

STATE OF ILLINOIS  
DEPARTMENT OF TRANSPORTATION

SUMMARY OF QUANTITIES

SCALE: SHEET OF SHEETS STA. TO STA.

F.A.P. RTE.	SECTION	COUNTY	TOTAL SHEETS	SHEET NO.
766	DT PAVT PRSV 2015-1	SHELBY	5	3
ILLINOIS I.F.E.O. A10 PROJECT			CONTRACT NO. 74706	



FILE NAME =	USER NAME = steffenmk	DESIGNED -	REVISED -
c:\pwork\pwork\stevfenmk\d0413028\074706-sh-typicals.dgn		DRAWN -	REVISED -
Default	PLOT SCALE = 100.0000' / in.	CHECKED -	REVISED -
	PLOT DATE = 12/8/2014	DATE -	REVISED -

**STATE OF ILLINOIS  
 DEPARTMENT OF TRANSPORTATION**

<b>TYPICAL SECTIONS</b>			
SCALE:	SHEET	OF SHEETS	STA. TO STA.

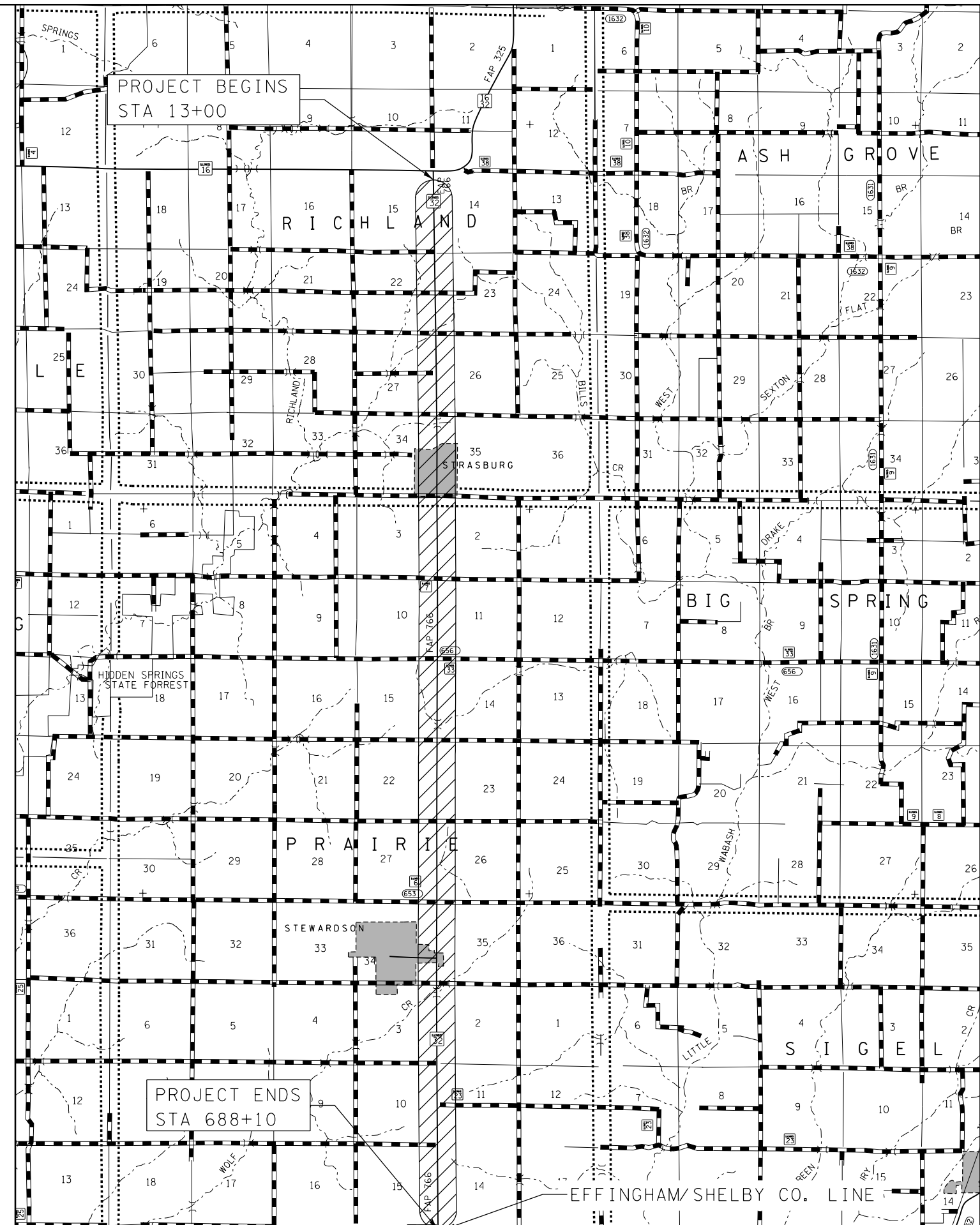
F.A.P. RTE.	SECTION	COUNTY	TOTAL SHEETS	SHEET NO.
766	D7 PAVT PRSV 2015-1	SHELBY	5	4
CONTRACT NO. 74706			ILLINOIS FED. AID PROJECT	

SCHEDULE OF QUANTITIES

STATION TO STATION	LENGTH (FOOT)	WIDTH (FOOT)	CAPE SEAL	SHORT TERM PAVEMENT MARKING	TEMPORARY PAVEMENT MARKING LINE, 4"	WORK ZONE PAVEMENT MARKING REMOVAL	PAINT PAVEMENT MARKING LINE, 4"	RAISED REFLECTIVE PAVEMENT MARKER	RAISED REFLECTIVE PAVEMENT MARKER REMOVAL
			Z0064265 (SQ YD)	70300100 (FOOT)	70300220 (FOOT)	70301000 (SQ FT)	78001110 (FOOT)	78100100 (EACH)	78300200 (EACH)
13+00.00 TO 494+50.00	48150.0	26.0	139100.0	27520.2	106288.5	1148.4	106288.5	601.88	601.88
494+50.00 TO 502+15.00	765.0	26.0	2210.0	443.7	2486.3	20.4	2486.3	9.56	9.56
502+15.00 TO 505+90.00	375.0	26.0	1083.3	217.5	843.8	10	843.8	4.69	4.69
505+90.00 TO 513+35.00	745.0	26.0	2152.2	422.2	2297.3	16.6	2297.3	9.31	9.31
513+35.00 TO 688+10.00	17475.0	26.0	50483.3	10096.2	38877.8	452.9	38877.8	218.44	218.44
TOTALS			195029	38700	150794	1648	150794	844	844

PROTECTING OR RESETTING SURVEY MARKERS

STATION	OFFSET FOOT	QUANTITY EACH
26+49	0.4 LT	1
53+07	7.0 RT	1
159+23	6.9 RT	1
185+73	2.0 RT	1
212+21	6.6 LT	1
265+26	4.2 LT	1
291+70	0.8 LT	1
318+14	1.4 RT	1
344+53	0.3 LT	1
370+91	3.2 LT	1
423+70	0.0	1
423+70	2.8 RT	1
450+13	0.5 RT	1
476+59	5.3 RT	1
502+97	2.7 RT	1
529+28	0.0	1
529+28	14.5 RT	1
634+22	0.4 LT	1
TOTALS		18



FILE NAME =	USER NAME = steffenmk	DESIGNED -	REVISED -
c:\pw\work\p\dot\stef\enmk\d0413028\074706-sh1-schedules.dgn		DRAWN -	REVISED -
Default	PLOT SCALE = 100.0000' / in.	CHECKED -	REVISED -
	PLOT DATE = 12/8/2014	DATE -	REVISED -

**STATE OF ILLINOIS  
DEPARTMENT OF TRANSPORTATION**

**SCHEDULES &  
LOCATION MAP**

SCALE: SHEET OF SHEETS STA. TO STA.

F.A.P. RTE.	SECTION	COUNTY	TOTAL SHEETS	SHEET NO.
766	D7 PAVT PRSV 2015-1	SHELBY	5	5
CONTRACT NO. 74706				
ILLINOIS FED. AID PROJECT				