

03-06-2015 LETTING ITEM 122

STATE OF ILLINOIS
DEPARTMENT OF TRANSPORTATION
DIVISION OF HIGHWAYS

**PROPOSED
HIGHWAY PLANS**

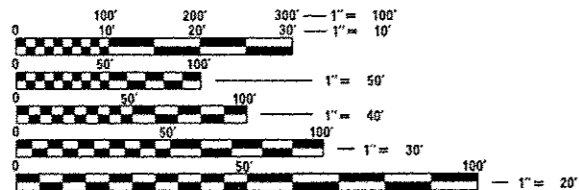
FAP ROUTE 690 (IL 160)
SECTION 15-1

CONCRETE PATCHING
CLINTON COUNTY
C-98-060-14

FOR INDEX OF SHEETS, SEE SHEET NO. 2

AADT: IL 160 - 5,400(2015)/6,800(2035) MU = 2.7% SU = 5.2%

BEGIN PROJECT: LAT. - 38°36'32.2"N
LONG. - 89°41'13.6"W
END PROJECT: LAT. - 38°37'03.6"N
LONG. - 89°41'14.1"W

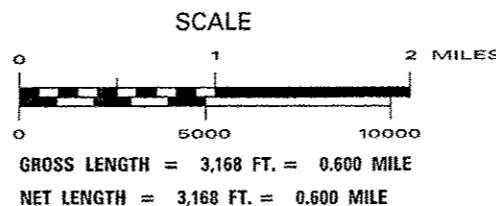
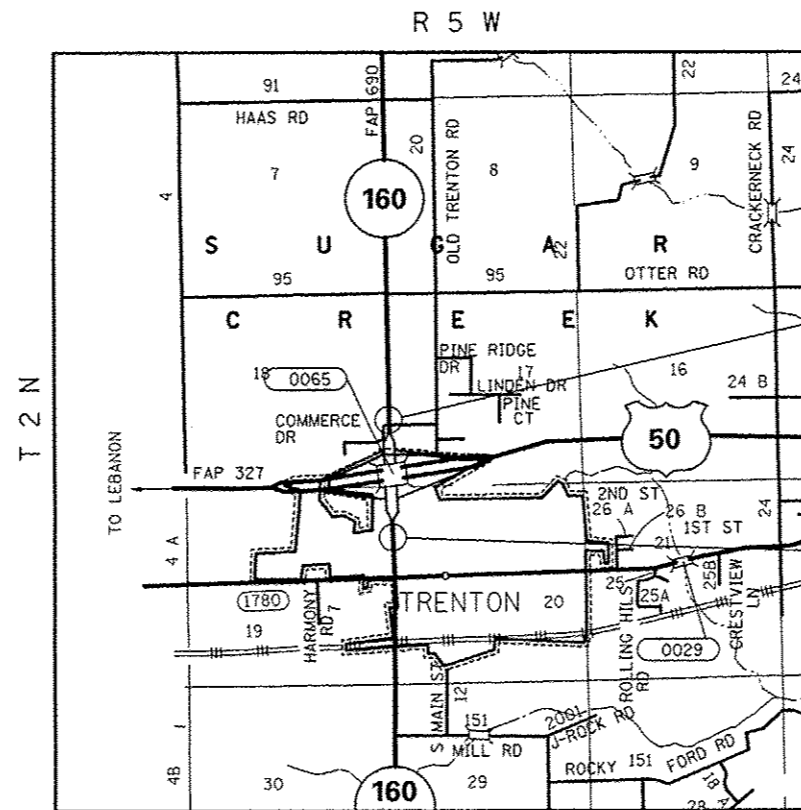


FULL SIZE PLANS HAVE BEEN PREPARED USING STANDARD ENGINEERING SCALES. REDUCED SIZED PLANS WILL NOT CONFORM TO STANDARD SCALES. IN MAKING MEASUREMENTS ON REDUCED PLANS, THE ABOVE SCALES MAY BE USED.

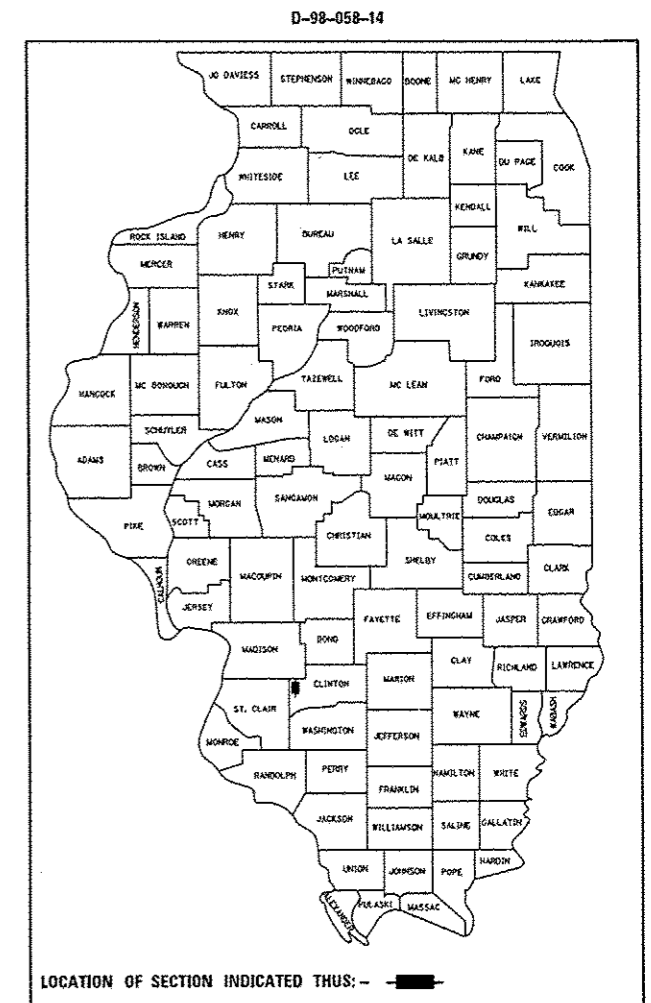
J.U.L.I.E.
JOINT UTILITY LOCATION INFORMATION FOR EXCAVATION
1-800-892-0123
OR 811

PROJECT ENGINEER: MICHAEL PRITCHETT (618) 346-3180
DESIGN ENGINEER: BO WEDMORE (618) 346-3206

CONTRACT NO. 76H33



F.A.P. RTE.	SECTION	COUNTY	TOTAL SHEETS	SHEET NO.
690	15-1	CLINTON	7	1
		ILLINOIS	CONTRACT NO. 76H33	



END PROJECT
MILE 13.842

BEGIN PROJECT
MILE 13.242

STATE OF ILLINOIS
DEPARTMENT OF TRANSPORTATION
DIVISION OF HIGHWAYS

SUBMITTED *July 25, 2014*

Jeffrey L. Kan...
DEPUTY DIRECTOR OF HIGHWAYS, REGION ENGINEER

John D. Baran...
ENGINEER OF DESIGN AND ENVIRONMENT

Oct 17, 2014

Oct 17, 2014

Omer Osman
DIRECTOR OF HIGHWAYS, CHIEF ENGINEER

PRINTED BY THE AUTHORITY
OF THE STATE OF ILLINOIS

INDEX OF SHEETS

- 1 COVER SHEET
- 2 GENERAL NOTES, INDEX OF SHEETS, STANDARDS
- 3 SUMMARY OF QUANTITIES
- 4 TYPICAL SECTIONS
- 5 PAVEMENT MARKING & RAISED REFLECTIVE PAVEMENT MARKER SCHEDULES
- 6-7 PATCHING SCHEDULE

STANDARDS

- 000001-06 STANDARD SYMBOLS, ABBREVIATIONS AND PATTERNS
- 001006 DECIMAL OF AN INCH AND OF A FOOT
- 442101-07 CLASS B PATCHES
- 701001-02 OFF-RD OPERATIONS, 2L, 2W, MORE THAN 15' AWAY
- 701006-05 OFF-RD OPERATIONS, 2L, 2W, 15' TO 24" FROM PAVEMENT EDGE
- 701201-04 LANE CLOSURE, 2L, 2W, DAY ONLY, FOR SPEEDS ≥ 45 MPH
- 701301-04 LANE CLOSURE, 2L, 2W, SHORT TIME OPERATIONS
- 701311-03 LANE CLOSURE 2L, 2W MOVING OPERATIONS-DAY ONLY
- 701336-06 LANE CLOSURE, 2L, 2W, WORK AREAS IN SERIES, FOR SPEEDS ≥ 45 MPH
- 701501-06 URBAN LANE CLOSURE, 2L, 2W, UNDIVIDED
- 701701-09 URBAN LANE CLOSURE, MULTILANE INTERSECTION
- 701901-04 TRAFFIC CONTROL DEVICES
- 780001-05 TYPICAL PAVEMENT MARKINGS
- 781001-03 TYPICAL APPLICATIONS RAISED REFLECTIVE PAVEMENT MARKERS

GENERAL NOTES

1. ILLINOIS STATE LAW REQUIRES A 48-HOUR NOTICE TO BE GIVEN TO UTILITIES BEFORE DIGGING. FIELD MARKING OF FACILITIES MAY BE OBTAINED BY CONTACTING J.U.L.I.E. (1-800-892-0123 OR 811) OR FOR NON-MEMBERS THE UTILITY COMPANY DIRECTLY.
 - * AMEREN IL - ELECTRIC & GAS
 - * AT&T IL - COMMUNICATIONS
 - * CHARTER COMMUNICATIONS, INC. - CABLE TV
 - * CLINTON COUNTY ELECTRIC COOPERATIVE, INC. - ELECTRIC
 - * CITY OF TRENTON - WATER & SANITARY SEWER

MEMBERS OF J.U.L.I.E. ARE NOTED BY AN *.
3. THE CONTRACTOR SHALL VERIFY ALL DIMENSIONS AND CONDITIONS IN THE FIELD PRIOR TO CONSTRUCTION AND ORDERING OF MATERIALS.
4. NO OVERNIGHT LANE CLOSURES SHALL BE ALLOWED ON THE PROJECT.
5. FLAGGERS SHALL BE PRESENT DURING ALL CLOSURE HOURS INCLUDING LUNCH HOUR AND NO ADDITIONAL COMPENSATION SHALL BE ALLOWED.
6. THE RESIDENT ENGINEER SHALL DETERMINE EXACT LOCATIONS WHERE PATCHES ARE TO BE APPLIED, SINCE THE PLAN LOCATIONS ARE APPROXIMATE.
7. THE PROPOSED PAVEMENT MARKING SHALL MATCH THE LOCATIONS OF THE EXISTING PAVEMENT MARKING, AS DIRECTED BY THE ENGINEER.
8. ALL TURF AREAS DISTURBED BY THE CONTRACTOR SHALL BE SEEDED WITH THE APPROPRIATE EROSION CONTROL AS DIRECTED BY THE ENGINEER AT THE CONTRACTOR'S EXPENSE.
9. "ROAD CONSTRUCTION AHEAD" SIGNS SHALL BE PLACED AT EACH END OF THE PROJECT PLUS THE INTERSECTING SIDE ROADS, AND WILL BE CONSIDERED INCLUDED IN THE TRAFFIC CONTROL PAY ITEMS. ALL CONSTRUCTION SIGNS SHALL BE 48"x48" FLUORESCENT ORANGE.

COMMITMENTS

NONE

FILE NAME :	USER NAME :	DESIGNED :	REVISED :	STATE OF ILLINOIS DEPARTMENT OF TRANSPORTATION	GENERAL NOTES, INDEX OF SHEETS & STANDARDS	F.A.P. RTE.	SECTION	COUNTY	TOTAL SHEETS	SHEET NO.	
al\pe_wark\pudat\wadmore_jb\0396001\d9	sh33-ah-tr-plandgr	DRAWN :	REVISED :			690	15-1	CLINTON	7	2	
		CHECKED :	REVISED :			CONTRACT NO. 76H33					
		DATE :	REVISED :			ILLINOIS FED. AID PROJECT					
				SCALE:	SHEET	OF	SHEETS	STA.	TO	STA.	

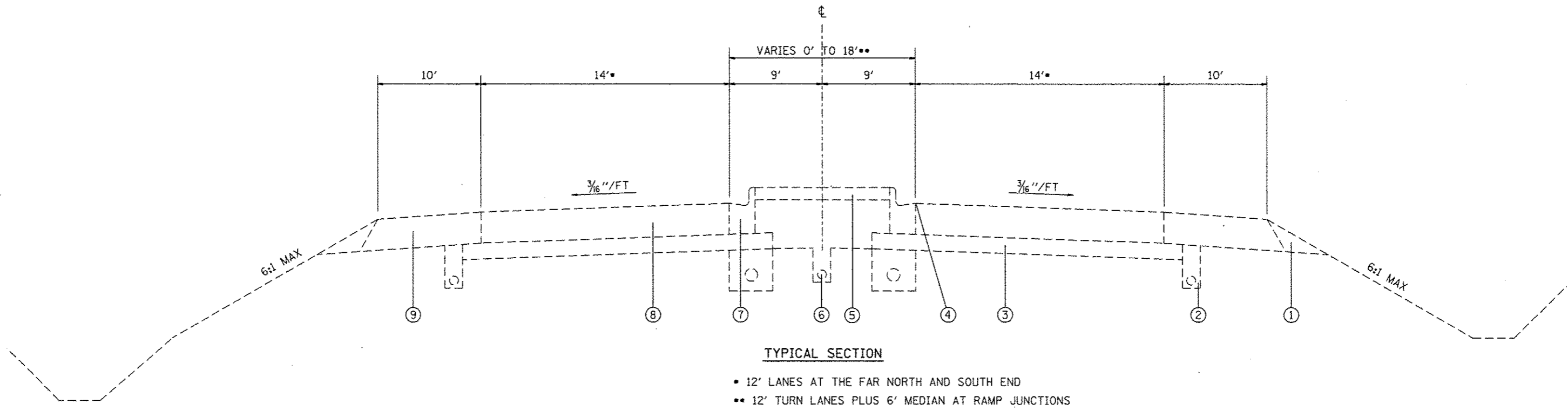
7/25/2014

CONSTR. CODE
CONT. MAINT.
100% STATE
ROADWAY
0005
RURAL

CODE NO.	ITEM	UNIT	TOTAL QUANTITY	
44200929	CLASS B PATCHES, TYPE I, 8 INCH	SQ YD	8	8
44200934	CLASS B PATCHES, TYPE II, 8 INCH	SQ YD	619	619
44200944	CLASS B PATCHES, TYPE IV, 8 INCH	SQ YD	159	159
44201299	DOWEL BARS 1 1/2"	EACH	1430	1430
44213100	PAVEMENT FABRIC	SQ YD	159	159
44213200	SAW CUTS	FOOT	3812	3812
44213204	TIE BARS 3/4"	EACH	40	40
67100100	MOBILIZATION	L SUM	1	1
70100450	TRAFFIC CONTROL AND PROTECTION, STANDARD 701201	L SUM	1	1
70100600	TRAFFIC CONTROL AND PROTECTION, STANDARD 701336	L SUM	1	1
70102620	TRAFFIC CONTROL AND PROTECTION, STANDARD 701501	L SUM	1	1
* 78001100	PAINT PAVEMENT MARKING - LETTERS AND SYMBOLS	SO FT	62	62
* 78001110	PAINT PAVEMENT MARKING - LINE 4"	FOOT	13067	13067
* 78100100	RAISED REFLECTIVE PAVEMENT MARKER	EACH	4	4

* SPECIALTY ITEM

FILE NAME =	USER NAME = wedmorejb	DESIGNED -	REVISED -	STATE OF ILLINOIS DEPARTMENT OF TRANSPORTATION	SUMMARY OF QUANTITIES				F.A.P. RTE.	SECTION	COUNTY	TOTAL SHEETS	SHEET NO.
c:\pwork\p\idot\wedmorejb\0396881\0396881.dgn	7/25/2014	DRAWN -	REVISED -						690	15-1	CLINTON	7	3
PLOT SCALE = 100.0000' / 1"		CHECKED -	REVISED -						CONTRACT NO. 76H33				
PLOT DATE = 7/25/2014		DATE -	REVISED -						ILLINOIS FED. AID PROJECT				



TYPICAL SECTION

- 12' LANES AT THE FAR NORTH AND SOUTH END
- 12' TURN LANES PLUS 6' MEDIAN AT RAMP JUNCTIONS

LEGEND

- ① EXISTING AGGREGATE SHOULDER
- ② EXISTING PIPE UNDERDRAIN 4"
- ③ EXISTING SUB-BASE GRANULAR MATERIAL TYPE A, 6"
- ④ EXISTING PROFILE GRADE
- ⑤ EXISTING CONCRETE MEDIAN SURFACE, 4"
- ⑥ EXISTING 4" PIPE UNDERDRAIN LOCATED CENTER OF MEDIAN
- ⑦ EXISTING COMB CONC C & G TY. M-6.06
- ⑧ EXISTING PCC PAVEMENT 8"
- ⑨ EXISTING BITUMINOUS SHOULDERS, 8"

FILE NAME =	USER NAME = wedmore_jb	DESIGNED -	REVISED -	STATE OF ILLINOIS DEPARTMENT OF TRANSPORTATION	TYPICAL SECTIONS			F.A.P. RTE.	SECTION	COUNTY	TOTAL SHEETS	SHEET NO.			
os\pwork\pwork\wedmore_jb\d0396081\d08	6h33-ahh-plan.dgn	DRAWN -	REVISED -		SCALE:	SHEET NO.	OF	SHEETS	STA.	TO STA.	690	15-1	CLINTON	7	4
	PLOT SCALE = 1/8" = 100.0000' / in.	CHECKED -	REVISED -								CONTRACT NO. 76H33				
	PLOT DATE = 7/25/2014	DATE -	REVISED -								FED. ROAD DIST. NO. [ILLINOIS] FED. AID PROJECT				

PAINT PAVEMENT MARKING

MILE STATION			LANE	4" YELLOW SKIP DASH	4" YELLOW SOLID	4" WHITE EDGELINES*	LETTERS & SYMBOLS
				FOOT	FOOT	FOOT	SQ FT
13.242	TO	13.842	NB	80	3299	3040	31
13.242	TO	13.842	SB	58	3389	3201	31
SUB-TOTAL				138	6688	6241	62
TOTAL				13067			62

* INCLUDES QUANTITY FOR LEFT TURN LANE WHITE LINES.

RAISED REFLECTIVE PAVEMENT MARKERS

MILE STATION			LENGTH	RAISED REFLECTIVE PAVEMENT TWO-WAY AMBER MARKER	RAISED REFLECTIVE PAVEMENT ONE-WAY CRYSTAL MARKER
				EACH	EACH
13.242	TO	13.842	0.60	2	2
TOTAL				2	2

NOTE: THESE QUANTITIES ARE PROVIDED IN CASE EXISTING RRPMS ARE DISTURBED DURING THE PATCHING PROCESS.

FILE NAME =	USER NAME = vedmore.jb	DESIGNED -	REVISED -	STATE OF ILLINOIS DEPARTMENT OF TRANSPORTATION	PAVEMENT MARKINGS & RAISED REFLECTIVE PAVMENT MARKER SCHEDULES			F.A.P. RTE.	SECTION	COUNTY	TOTAL SHEETS	SHEET NO.
c:\pv_work\pvd\dot\vedmore.jb\0396881\d9	6h33-eh1-plan.dgn	DRAWN -	REVISED -					690	15-1	CLINTON	7	5
	PLOT SCALE = 100.0000' / 1"	CHECKED -	REVISED -		SCALE: SHEET NO. OF SHEETS STA. TO STA.			FED. ROAD DIST. NO. [ILLINOIS] FED. AID PROJECT		CONTRACT NO. 76H33		
	PLOT DATE = 7/25/2014	DATE -	REVISED -									

PATCHING SCHEDULE

MILE STATION	WIDTH	LENGTH	LANE	CLASS B PATCHES, TYPE I, 8 INCH	CLASS B PATCHES, TYPE II, 8 INCH	CLASS B PATCHES, TYPE IV, 8 INCH	SAW CUTS	PAVEMENT FABRIC	TIE BARS 3/4"	DOWEL BARS 1 1/2"
	FOOT	FOOT	NB/SB/TL	SQ YD	SQ YD	SQ YD	FOOT	SQ YD	EACH	EACH
13.254	12	6	NB		8		48			20
13.281	12	6	NB		8		48			20
13.299	14	6	NB		10		54			20
13.306	14	6	NB		10		54			20
13.318	14	6	NB		10		54			20
13.366	14	6	NB		10		54			20
13.537	14	6	NB		10		54			20
13.537	5	6	TL	4			27			20
13.548	14	6	NB		10		54			20
13.548	10	6	TL		7		42			20
13.557	14	6	TL		10		54			20
13.571	12	6	TL		8		48			20
13.572	14	6	NB		10		54			20
13.577	14	6	NB		10		54			20
13.577	12	6	TL		8		48			20
13.586	14	6	NB		10		54			20
13.586	12	6	TL		8		48			20
13.602	14	6	NB		10		54			20
13.620	14	6	NB		10		54			20
13.631	14	6	NB		10		54			20
13.665	14	6	NB		10		54			20
13.689	14	6	NB		10		54			20
13.708	14	6	NB		10		54			20
13.721	14	6	NB		10		54			20
13.741	14	6	NB		10		54			20
13.760	14	6	NB		10		54			20
13.773	14	6	NB		10		54			20
NORTHBOUND SUB-TOTAL				4	247	0	1389	0	0	540

NB = NORTHBOUND
 SB = SOUTHBOUND
 TL = TURN LANE

FILE NAME : c:\pwork\pvdot\wedmore\j\d8396801\d8396801.dgn	USER NAME : wedmore.jb	DESIGNED - -	REVISED - -	STATE OF ILLINOIS DEPARTMENT OF TRANSPORTATION	PATCHING SCHEDULE				F.A.P. RTE. 690	SECTION 15-1	COUNTY CLINTON	TOTAL SHEETS 7	SHEET NO. 6
	PLOT SCALE = 1/8" = 100.0000' / in.	DRAWN - -	REVISED - -		SCALE:	SHEET NO.	OF	SHEETS	STA.	TO STA.	CONTRACT NO. 76H33		
	PLOT DATE = 7/25/2014	CHECKED - -	REVISED - -		FED. ROAD DIST. NO. [ILLINOIS] FED. AID PROJECT								
		DATE - -	REVISED - -										

PATCHING SCHEDULE

MILE STATION	WIDTH	LENGTH	LANE	CLASS B PATCHES, TYPE I, 8 INCH	CLASS B PATCHES, TYPE II, 8 INCH	CLASS B PATCHES, TYPE IV, 8 INCH	SAW CUTS	PAVEMENT FABRIC	TIE BARS 3/4"	DOWEL BARS 1 1/2"
	FOOT	FOOT	NB/SB/TL	SQ YD	SQ YD	SQ YD	FOOT	SQ YD	EACH	EACH
13.244	12	6	SB		8		48			20
13.254	12	6	SB		8		48			20
13.264	12	6	SB		8		48			20
13.281	12	6	SB		8		48			20
13.289	12	6	SB		8		48			20
13.299	12	6	SB		8		48			20
13.306	14	6	SB		10		54			20
13.315	14	6	SB		10		54			20
13.388	14	6	SB		10		54			20
13.417	14	6	SB		10		54			20
13.423	14	6	SB		10		54			20
13.446	14	6	SB		10		54			20
13.458	12	6	TL		8		48			20
13.464	14	6	SB		10		54			20
13.464	12	10	TL		14		56			20
13.480	14	6	SB		10		54			20
13.480	12	6	TL		8		48			20
13.489	14	6	SB		10		54			20
13.489	12	6	TL		8		48			20
13.494	14	17	SB			27	76	27		20
13.496	10	6	TL		7		42			20
13.505	14	6	SB		10		54			20
13.505	8	6	TL		6		36			20
13.513	14	6	SB		10		54			20
13.513	4	6	TL	3			24			20
13.607	14	6	SB		10		54			20
13.615	14	6	SB		10		54			20
13.627	14	6	SB		10		54			20
13.648	14	6	SB		10		54			20
13.667	14	6	SB		10		54			20
13.678	14	6	SB		10		54			20
13.689	14	43	SB			67	128	67	21	20
13.720	14	32	SB			50	106	50	15	20
13.735	14	6	SB		10		54			20
13.754	14	6	SB		10		54			20
13.770	14	6	SB		10		54			20
13.781	12	6	SB		8		48			20
13.795	12	6	SB		8		48			20
SOUTHBOUND SUB-TOTAL				3	315	144	2076	144	36	760
NORTHBOUND/SOUTHBOUND SUB-TOTAL				7	562	144	3465	144	36	1300
10% ALLOWANCE FOR FAILURES				1	57	15	347	15	4	130
GRAND TOTAL				8	619	159	3812	159	40	1430

NB = NORTHBOUND
SB = SOUTHBOUND
TL = TURN LANE

FILE NAME =	USER NAME = vedmore_jb	DESIGNED -	REVISED -	STATE OF ILLINOIS DEPARTMENT OF TRANSPORTATION	PATCHING SCHEDULE				F.A.P. RTE.	SECTION	COUNTY	TOTAL SHEETS	SHEET NO.	
o:\pe_work\pedit\vedmore_jb\0396801\08	6h33-shr-plan.dgn	DRAWN -	REVISED -		SCALE:	SHEET NO.	OF	SHEETS	STA.	TO STA.	690	15-1	CLINTON	7 7
	PLOT SCALE = 1/8" = 100.0000' / 1"	CHECKED -	REVISED -										CONTRACT NO. 76H33	
	PLOT DATE = 7/25/2014	DATE -	REVISED -										FED. ROAD DIST. NO.	ILLINOIS FED. AID PROJECT