

STATE OF ILLINOIS
DEPARTMENT OF TRANSPORTATION

FAP	SECTION	COUNTY	TOTAL SHEETS	SHEET NO.
344	2019-061-BR	DUPAGE	17	1
		ILLINOIS	CONTRACT NO. 62J38	

FOR INDEX OF SHEETS, SEE SHEET NO. 2

PROPOSED HIGHWAY PLANS

FAP ROUTE 344: IL 83 (KINGERY HWY) AT CHICAGO AVE.
SECTION: 2019-061-BR
PROJECT: NHPP-02VH(275)
BRIDGE REPAIR, BRIDGE JOINT REPAIR, BRIDGE DECK OVERLAY
DUPAGE COUNTY

C-91-422-19



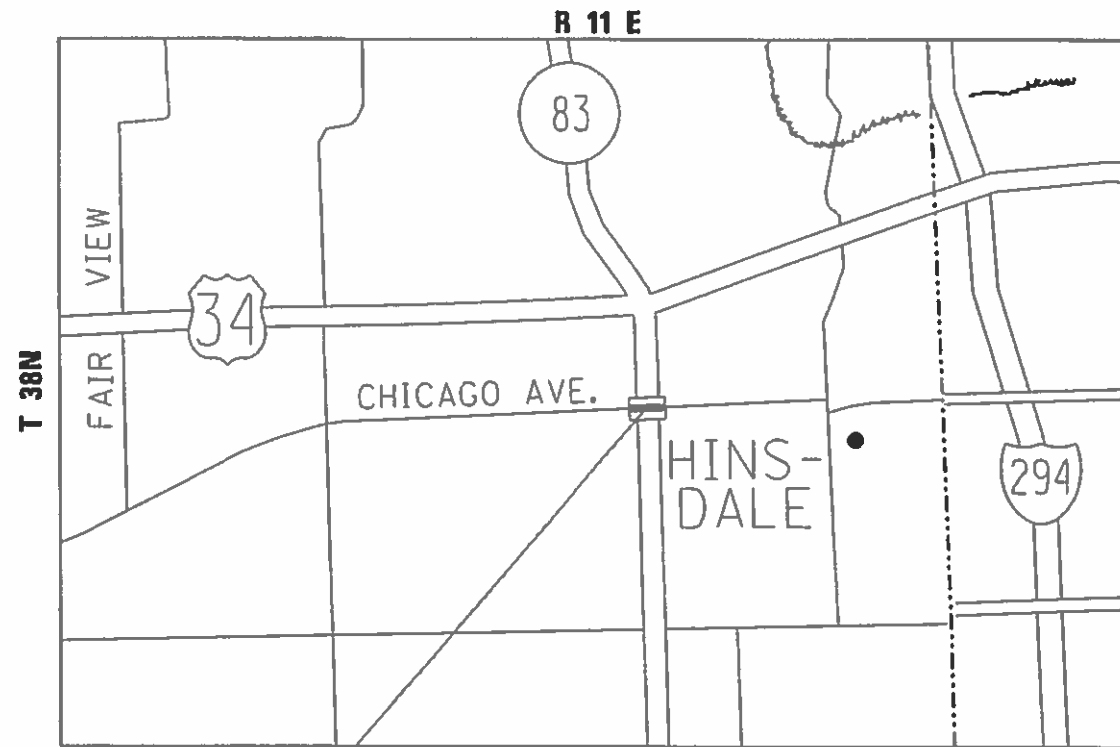
THIS PROJECT IS LOCATED IN THE VILLAGE OF HINSDALE AND THE VILLAGE OF CLARENDON HILLS

TRAFFIC DATA
2016 ADT: 5,600
POSTED SPEED: 25 MPH



FULL SIZE PLANS HAVE BEEN PREPARED USING STANDARD ENGINEERING SCALES. REDUCED SIZED PLANS WILL NOT CONFORM TO STANDARD SCALES. IN MAKING MEASUREMENTS ON REDUCED PLANS, THE ABOVE SCALES MAY BE USED.

J.U.L.I.E.
JOINT UTILITY LOCATION INFORMATION FOR EXCAVATORS
1-800-892-0123
OR 811



PROJECT LOCATION
S.N. 022-0211

PROJECT ENGINEER: J. ALAIN MIDY (847)-221-3056
PROJECT MANAGER: FAWAD AQUEEL (847)-705-4247

CONTRACT NO. 62J38

GROSS LENGTH = 143.40 FT = 0.027 MILE
NET LENGTH = 143.40 FT = 0.027 MILE

STATE OF ILLINOIS
DEPARTMENT OF TRANSPORTATION

SUBMITTED December 16, 2019

Anthony J. Quigley REGIONAL ENGINEER

Jan 31, 2020

[Signature] ENGINEER OF DESIGN AND ENVIRONMENT

Jan 31, 2020

[Signature] DIRECTOR OF HIGHWAYS PROJECT IMPLEMENTATION

PRINTED BY THE AUTHORITY
OF THE STATE OF ILLINOIS

INDEX OF SHEETS

<u>SHEET NO.</u>	<u>DESCRIPTION</u>
1	COVERSHEET
2	INDEX OF SHEETS & STATE STANDARDS & GENERAL NOTES
3	SUMMARY OF QUANTITIES
4	ROADWAY PLAN
5	DETOUR PLAN FOR CHICAGO AVE. BRIDGE
6 - 15	BRIDGE REPAIR PLANS
16	ARTERIAL ROAD INFORMATION SIGN
17	DETOUR SIGNING (TC-21)

STATE STANDARDS

<u>STANDARD NO.</u>	<u>DESCRIPTION</u>
701011-04	OFF-RD MOVING OPERATIONS, 2L, 2W, DAY ONLY
701301-04	LANE CLOSURE, 2L, 2W, SHORT TIME OPERATIONS
701311-03	LANE CLOSURE 2L, 2W MOVING OPERATIONS DAY ONLY
701601-09	URBAN LANE CLOSURE, MULTILANE, 1W OR 2W WITH NONTRAVERSABLE MEDIAN
701801-06	SIDEWALK, CORNER OR CROSSWALK CLOSURE
701901-08	TRAFFIC CONTROL DEVICES

GENERAL NOTES

- BEFORE STARTING ANY EXCAVATION, THE CONTRACTOR SHALL CALL "JULIE" AT 800-892-0123 OR 811 FOR FIELD LOCATIONS OF BURIED ELECTRIC, TELEPHONE AND GAS FACILITIES. (48 HOUR NOTIFICATION IS REQUIRED).
- TEN (10) FOOT TRANSITIONS SHALL BE USED TO MATCH PROPOSED CURB AND GUTTER AND MEDIAN ITEMS OF WORK TO EXISTING CURBS AND GUTTER AND MEDIANS IN THE FIELD, UNLESS OTHERWISE SHOWN. THE TRANSITIONS SHALL BE PAID FOR THE CONTRACT UNIT PRICE FOR THE PROPOSED ITEMS OF WORK SPECIFIED.
- THE CONTRACTOR SHALL COORDINATE CONSTRUCTION ACTIVITIES WITH UTILITY COMPANIES VILLAGE OF HINSDALE AND DUPAGE COUNTY.
- THE CONTRACTOR WILL NOT BE ALLOWED TO SET UP A YARD OR FIELD OFFICE ON STATE PROPERTY WITHOUT WRITTEN PERMISSION FROM THE DEPARTMENT.
- ALL DAMAGE TO EXISTING PAVEMENT MARKINGS OR RAISED REFLECTIVE PAVEMENT MARKERS OUTSIDE THE REMOVAL LINE SHOWN ON THE PLANS SHALL BE REPLACED AT NO ADDITIONAL COST TO THE DEPARTMENT.
- THE RESIDENT ENGINEER SHALL CONTACT THE AREA TRAFFIC FIELD TECHNICIAN VIA EMAIL AT JOE.ECKERT@ILLINOIS.GOV, A MINIMUM OF 2 WEEKS PRIOR TO PLACEMENT OF PERMANENT PAVEMENT MARKING.
- BEFORE BEGINNING ANY WORK, THE CONTRACTOR SHALL RETAIN AND RECORD FOR FUTURE REFERENCE ALL EXISTING PAVEMENT MARKING LINES (AND RAISED REFLECTIVE PAVEMENT MARKERS) IN ORDER THAT THESE LOCATIONS CAN BE RE-ESTABLISHED FOR STRIPING. EXACT LOCATIONS OF ALL PAVEMENT MARKING SHALL BE AS DIRECTED BY THE ENGINEER.
- DO NOT SCALE PLANS FOR CONSTRUCTION DIMENSIONS.
- DOUBLE LANE MARKERS ARE TO BE USED AS SHOWN ON THE DISTRICT ONE DETAIL "TYPICAL APPLICATIONS - RAISED REFLECTIVE PAVEMENT MARKERS (SNOW-PLOW RESISTANT)" SHOWN IN THE PLANS.
- DRAINAGE ADJUSTMENT, RECONSTRUCTION, OR CLEANING LOCATIONS WILL BE DETERMINED IN THE FIELD BY THE ENGINEER.
- IT SHALL BE THE CONTRACTOR'S RESPONSIBILITY TO VERIFY ALL DIMENSIONS AND CONDITIONS EXISTING IN THE FIELD PRIOR TO CONSTRUCTION AND ORDERING OF MATERIALS.
- FRAMES AND LIDS ADJUSTMENT OF PRIVATE UTILITIES WITHIN THE LIMITS OF THE IMPROVEMENTS SHALL BE DONE BY THEIR RESPECTIVE OWNERS AND ARE NOT PART OF THIS CONTRACT.
- THE CONTRACTOR SHALL CONTACT THE DISTRICT ONE TRAFFIC CONTROL SUPERVISOR AT KALPANA.KANNAN.HOSADURGA@ILLINOIS.GOV A MINIMUM OF 72 HOURS IN ADVANCE OF BEGINNING WORK.
- THE CONTRACTOR SHALL BE REQUIRED TO PROVIDE ACCESS TO ABUTTING PROPERTY AT ALL TIMES DURING THE CONSTRUCTION OF THIS PROJECT.
- EXISTING BROKEN FRAMES AND LIDS SHALL BE REMOVED AND DISPOSED OF BY THE CONTRACTOR AND SHALL BE REPLACED AS DIRECTED BY THE ENGINEER. REPLACEMENT FRAMES AND LIDS WILL BE PAID FOR ACCORDING TO ARTICLE 109.04 OF THE STANDARD SPECIFICATIONS UNLESS A SEPARATE PAY ITEM HAS BEEN PROVIDED.
- THE CONTRACTOR SHALL BE RESPONSIBLE FOR THE NOTIFICATION OF ALL EMERGENCY SERVICES, SCHOOL DISTRICTS, IDOT'S COMMUNICATIONS CENTER, SPRINGFIELD TRUCK PERMIT SECTION AND OTHER AGENCIES AFFECTED BY THE CLOSURE. THE CONTRACTOR SHALL ALSO BE RESPONSIBLE FOR POSTING SIGNS THAT WILL INDICATE THE DATES THE CLOSURE WILL BE IN PLACE.
- THE "ARTERIAL ROAD INFORMATION SIGN (TC-22)" IS APPLICABLE ONLY TO ARTERIAL ROADS AND SHALL NOT BE APPLIED TO EXPRESSWAYS/TOLLWAYS.
- CONTACT THE IDOT ROADSIDE DEVELOPMENT UNIT AT 847-705-4171 AT LEAST 2 WEEKS PRIOR TO BEGINNING FORESTRY WORK FOR LAYOUT.

MODEL: Default
FILE: \\hpc-pub\hpcroom\data\illinois.gov\RWIDOT\Documents\IDOT_Offices\District_1\Projects\ID118819\CADDData\Design\ID118819_sht-GENERAL.dgn

USER NAME = kxanms	DESIGNED -	REVISED -	STATE OF ILLINOIS DEPARTMENT OF TRANSPORTATION	INDEX OF SHEETS & STATE STANDARDS & GENERAL NOTES CHICAGO AVE. BRIDGE AT IL 83	F.A.P. RTE.	SECTION	COUNTY	TOTAL SHEETS	SHEET NO.	
	DRAWN -	REVISED -			344	2019-061-BR	DUPAGE	17	2	
PLOT SCALE = 100.0000' / in.	CHECKED -	REVISED -			CONTRACT NO. 62J38					
PLOT DATE = 12/13/2019	DATE -	REVISED -			ILLINOIS FED. AID PROJECT					
				SCALE:	SHEET	OF	SHEETS	STA.	TO STA.	

SUMMARY OF QUANTITIES			TOTAL QUANTITIES	CONSTRUCTION TYPE CODE				
CODE NO	ITEM	UNIT		CHICAGO AVE. 80% FED/ 20% STATE 0013	CHICAGO AVE. 100% STATE 0013			
42400200	PORTLAND CEMENT CONCRETE SIDEWALK 5 INCH	SO FT	50	50				
44201769	CLASS D PATCHES, TYPE III, 10 INCH	SO YD	20	20				
50102400	CONCRETE REMOVAL	CU YD	7.75	7.75				
50300255	CONCRETE SUPERSTRUCTURE	CU YD	7.5	7.5				
50800205	REINFORCEMENT BARS, EPOXY COATED	POUND	1230	1230				
52000110	PREFORMED JOINT STRIP SEAL	FOOT	90	90				
59000200	EPOXY CRACK INJECTION	FOOT	65	65				
67000400	ENGINEER'S FIELD OFFICE, TYPE A	CAL MO	4	4				
67100100	MOBILIZATION	L SUM	1	1				
* 78000200	THERMOPLASTIC PAVEMENT MARKING - LINE 4"	FOOT	100	100				
* 78008210	POLYUREA PAVEMENT MARKING TYPE I - LINE 4"	FOOT	226	226				
x5870015	BRIDGE DECK CONCRETE SEALER	SO FT	1800	1800				
x7010216	TRAFFIC CONTROL AND PROTECTION, (SPECIAL)	L SUM	1	1				

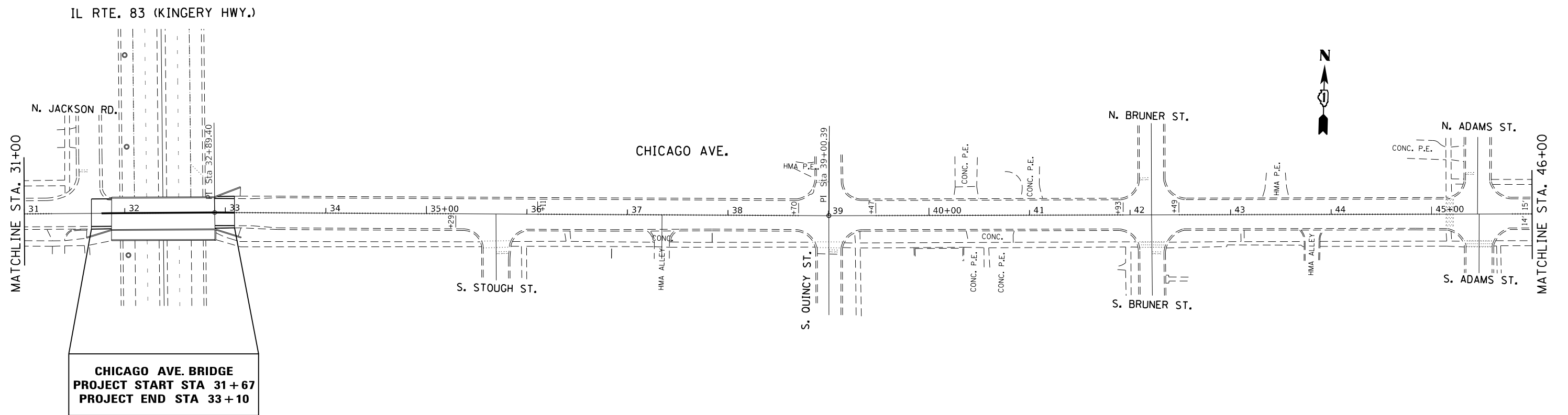
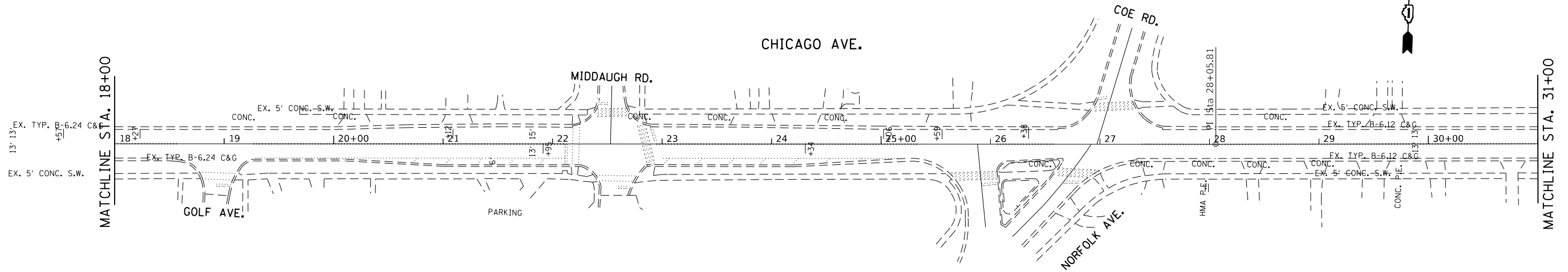
SUMMARY OF QUANTITIES			TOTAL QUANTITIES	CONSTRUCTION TYPE CODE				
CODE NO	ITEM	UNIT		CHICAGO AVE. 80% FED/ 20% STATE 0013	CHICAGO AVE. 100% STATE 0013			
Z0012102	CONCRETE BRIDGE DECK SCARIFICATION 3/8 INCH	SO YD	498	498				
Z0012193	BRIDGE DECK THIN POLYMER OVERLAY 3/8"	SO YD	498	498				
Z0012754	STRUCTURAL REPAIR OF CONCRETE (DEPTH EQUAL TO OR LESS THAN 5 INCHES)	SO FT	10	10				
Z0018500	DRAINAGE STRUCTURES TO BE CLEANED	EACH	7	7				
Z0030850	TEMPORARY INFORMATION SIGNING	SO FT	37.3	37.3				
Z0073510	TEMPORARY TRAFFIC SIGNAL TIMING	EACH	4	4				

FILE NAME =	USER NAME = khamms	DESIGNED -	REVISED -
p:\planroom\dtd\illinois\p\1001\Documents\DOT\Files\District\Projects\DI\BB\PCAD\Design\DI\BB9-sh-		DRAWN -	REVISED -
	PLOT SCALE = 100.0000' / 1in	CHECKED -	REVISED -
	PLOT DATE = 12/13/2019	DATE -	REVISED -

**STATE OF ILLINOIS
DEPARTMENT OF TRANSPORTATION**

SUMMARY OF QUANTITIES	
SCALE:	SHEET NO. 1 OF 1 SHEETS STA. TO STA.

F.A.P. RTE.	SECTION	COUNTY	TOTAL SHEETS	SHEET NO.
344	2019-061-BR	DUPAGE	17	3
CONTRACT NO. 62J38				
FED. ROAD DIST. NO. 1 ILLINOIS FED. AID PROJECT				



**CHICAGO AVE. BRIDGE
PROJECT START STA 31+67
PROJECT END STA 33+10**

MODEL: Default
FILE: Model: Chicago Ave. at IL RTE. 83 (Kingery Hwy) - 2019-06-17 10:40:00
PROJECT: D:\Projects\18819\18819\CD\Drawings\DOT Office\Drawings\18819\18819-CHICAGO AVE. BRIDGE.dwg

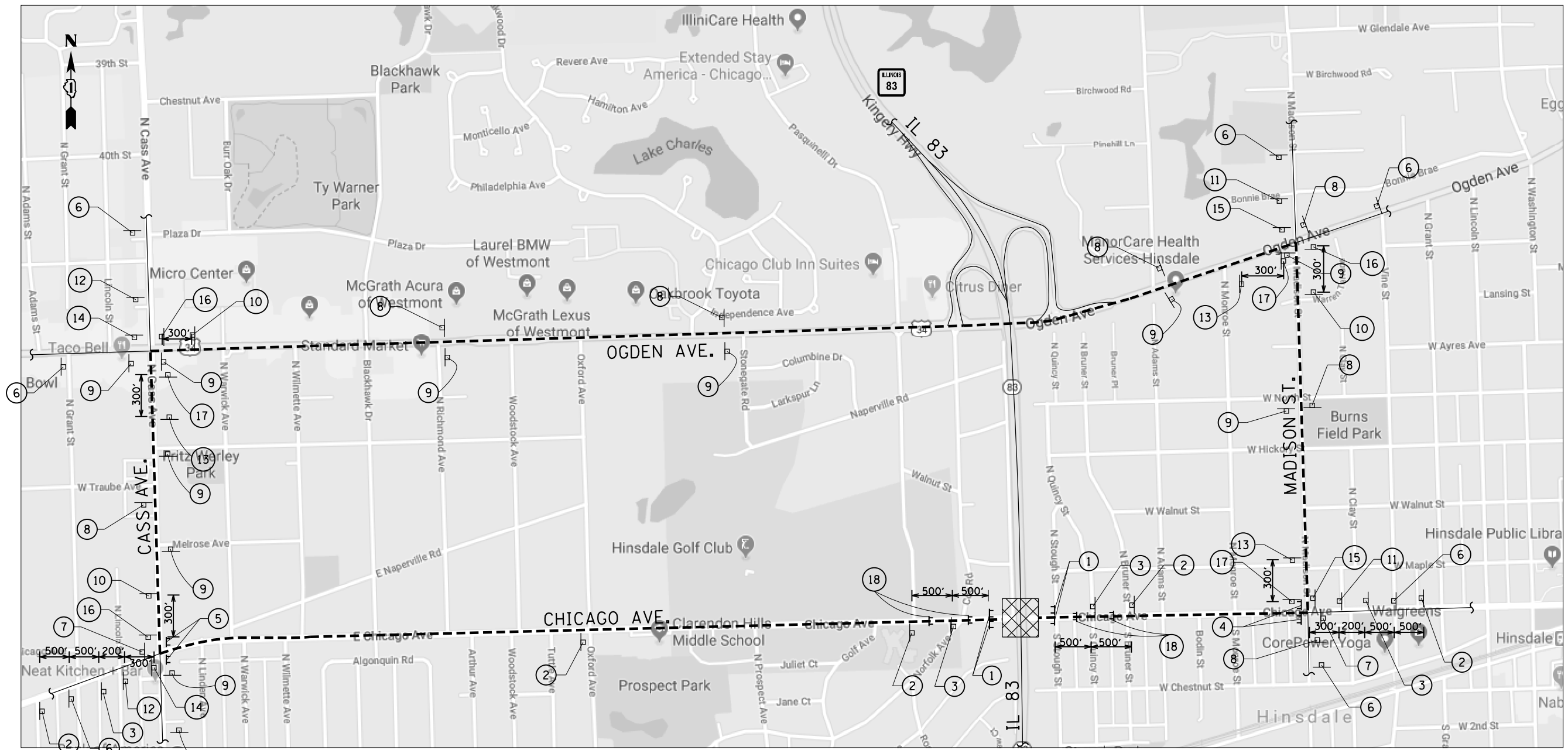
USER NAME = khanms	DESIGNED -	REVISED -
	DRAWN -	REVISED -
PLOT SCALE = 100,0000' / in.	CHECKED -	REVISED -
PLOT DATE = 12/13/2019	DATE -	REVISED -

**STATE OF ILLINOIS
DEPARTMENT OF TRANSPORTATION**

**ROADWAY PLAN SHEET
CHICAGO AVE. AT IL RTE. 83 (KINGERY HWY.)**

SCALE: 1"=50' SHEET OF SHEETS STA. 31+00 TO STA. 61+00

F.A.P. RTE.	SECTION	COUNTY	TOTAL SHEETS	SHEET NO.
344	2019-061-BR	DUPAGE	17	4
CONTRACT NO. 62J38				
ILLINOIS FED. AID PROJECT				



LEGEND

1	ROAD CLOSED R11-2-4830	3	Flashing light ROAD CLOSED 500 FT W20-3-4848	5	ROAD CLOSED TO THRU TRAFFIC R11-4-6030 DETOUR M4-10L4818	7	END DETOUR M4-8A	9	EAST CHICAGO AVE. DETOUR M3-2-2412 *CUSTOM M4-9 30" x 24"	11	WEST CHICAGO AVE. DETOUR M3-4-2412 *CUSTOM M4-9R 30" x 24"	13	EAST CHICAGO AVE. DETOUR M3-2-2412 *CUSTOM M4-9R 30" x 24"	15	WEST CHICAGO AVE. DETOUR M3-4-2412 *CUSTOM M4-9R 30" x 24"	17	EAST CHICAGO AVE. DETOUR M3-2-2412 *CUSTOM M4-9R 30" x 24"	18	ROAD CLOSED TO THRU TRAFFIC R11-4-6030
2	Flashing light ROAD CLOSED AHEAD W20-3-4848	4	ROAD CLOSED TO THRU TRAFFIC R11-4-6030 DETOUR M4-10R-4818	6	DETOUR AHEAD W20-2-4848	8	WEST CHICAGO AVE. DETOUR M3-4-2412 *CUSTOM M4-9 30" x 24"	10	WEST CHICAGO AVE. DETOUR M3-4-2412 *CUSTOM M4-9L 30" x 24"	12	EAST CHICAGO AVE. DETOUR M3-2-2412 *CUSTOM M4-9L 30" x 24"	14	EAST CHICAGO AVE. DETOUR M3-2-2412 *CUSTOM M4-9L 30" x 24"	16	WEST CHICAGO AVE. DETOUR M3-4-2412 *CUSTOM M4-9L 30" x 24"	Type III barricade with flashing lights DETOUR ROUTE CONSTRUCTION ZONE			

MODEL: Default
 FILE: \\nrcs\pub\pubroom\dat\illinois\gov\pww\DOT\Documents\DOT_Offices\District_1\Projects\118819\CADD\Design\118819-sh-eb-04.dgn
 PLOT SCALE = 100,0000' / in.
 PLOT DATE = 12/13/2019

USER NAME = khanms	DESIGNED -	REVISED -
	DRAWN -	REVISED -
	CHECKED -	REVISED -
	DATE -	REVISED -

**STATE OF ILLINOIS
DEPARTMENT OF TRANSPORTATION**

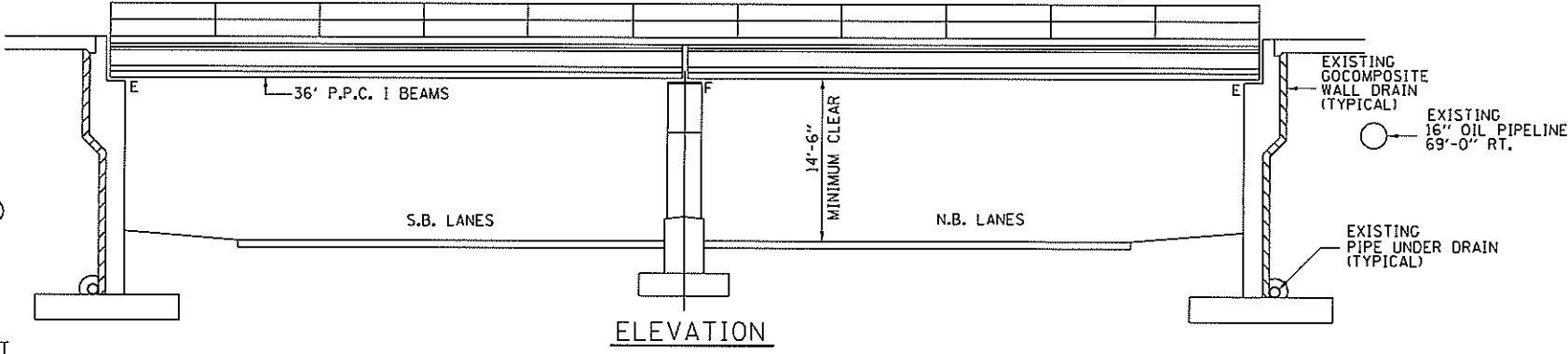
DETOUR PLAN FOR CHICAGO AVE. BRIDGE

SCALE: SHEET OF SHEETS STA. TO STA.

F.A.P. RTE.	SECTION	COUNTY	TOTAL SHEETS	SHEET NO.
344	2019-061-BR	DUPAGE	17	5
IL 83 AT CHICAGO AVE.		CONTRACT NO. 62J38		
ILLINOIS		FED. AID PROJECT		



EXISTING 6" SANITARY SEWER

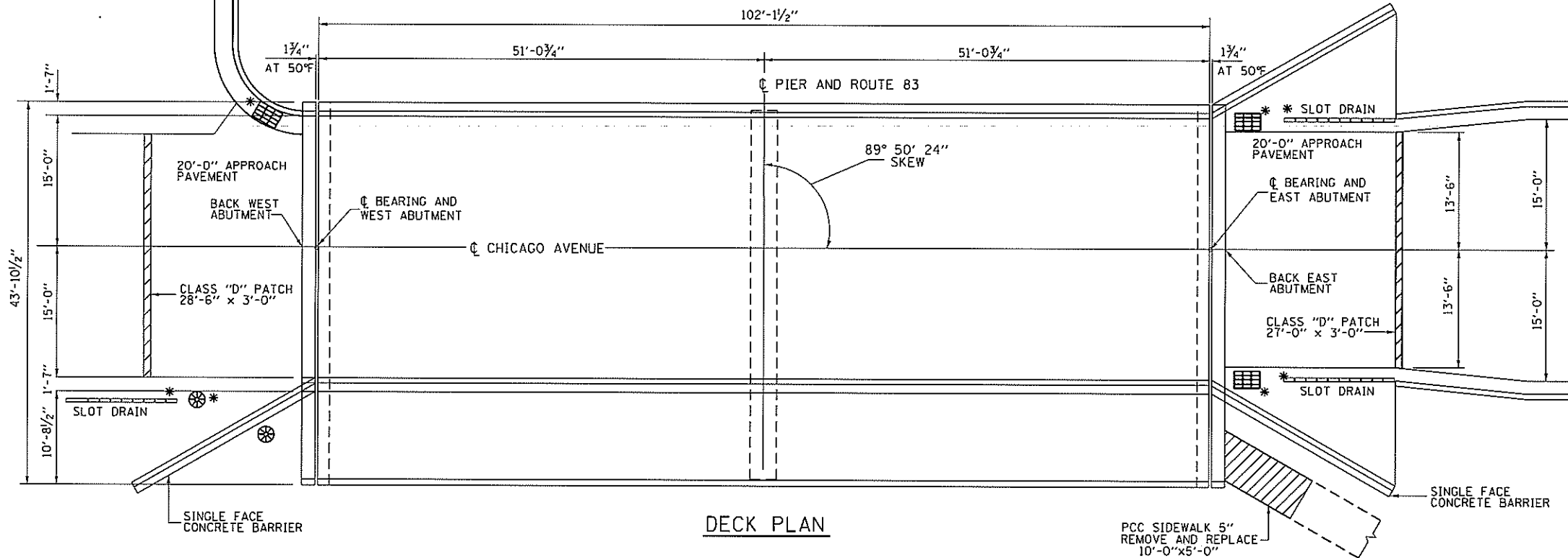


ELEVATION

GENERAL NOTES:
PLAN DIMENSIONS AND DETAILS RELATIVE TO EXISTING PLANS ARE SUBJECT TO ROUTING VARIATIONS. THE CONTRACTOR SHALL FIELD VERIFY EXISTING DIMENSIONS AND DETAILS EFFECTING NEW CONSTRUCTION AND MAKE NECESSARY APPROVED ADJUSTMENT PRIOR TO CONSTRUCTION OR ORDERING OF MATERIALS. SUCH VARIATIONS SHALL NOT BE A CAUSE FOR ADDITIONAL COMPENSATION FOR A CHANGE IN SCOPE OF THE WORK, HOWEVER, THE CONTRACTOR WILL BE PAID FOR THE QUANTITY ACTUALLY FURNISHED BASED UPON THE UNIT PRICE BID FOR THE WORK.

ALL NEW STRUCTURAL STEEL SHALL CONFORM TO AASHTO M-270, GR.36 UNLESS OTHERWISE SPECIFIED.
REINFORCEMENT BARS DESIGNATED (E) SHALL BE EPOXY COATED
EXISTING REINFORCEMENT BARS EXTENDING INTO THE REMOVAL AREA SHALL BE CLEANED, STRAIGHTENED AND INCORPORATED INTO THE NEW CONSTRUCTION. ANY REINFORCEMENT BARS THAT ARE DAMAGED DURING CONCRETE REMOVAL SHALL BE REPLACED WITH AN APPROVED BAR SPLICER OR ANCHORAGE SYSTEM, COST INCLUDED WITH CONCRETE REMOVAL.
JOINT OPENINGS SHALL BE ADJUSTED ACCORDING TO ARTICLE 520.04 OF THE STANDARD SPECIFICATIONS, WHEN THE DECK IS POURED AT AN AMBIENT TEMPERATURE OTHER THAN 50° F.

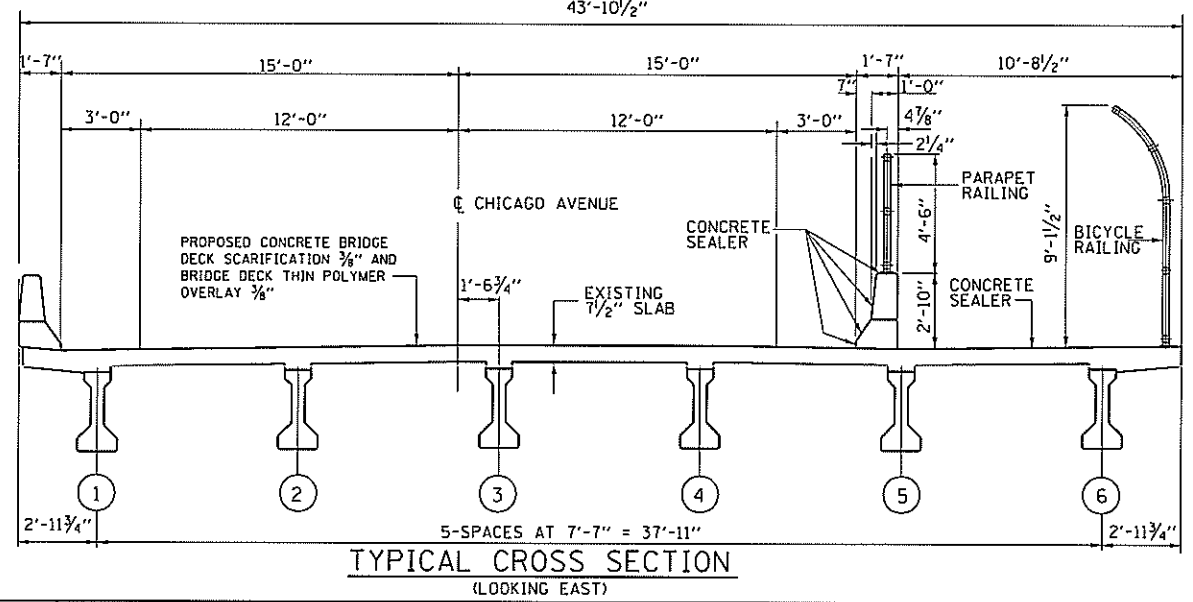
POLYMER CONCRETE MUST BE PLACED IN DIRECT CONTACT WITH THE CONCRETE DECK. REMOVAL OF ALL MATERIAL THAT MAY ADHERE TO THE POLYMER CONCRETE CONTACT AREA IS REQUIRED. COST INCLUDED IN BRIDGE DECK THIN POLYMER OVERLAY 3/8".
THE DECK SURFACE SHALL HAVE ITS FINAL FINISH TINED ACCORDING TO ARTICLE 420.09 (e)(1) OF THE STANDARD SPECIFICATION. COST INCLUDED IN CONCRETE SUPERSTRUCTURE.
WORK TO BE COMPLETED UNDER ROAD CLOSURE.
THE CONTRACT SHALL USE EXTREME CARE DURING CONCRETE REMOVAL SO AS NOT TO DAMAGE THE PPC I-BEAMS.



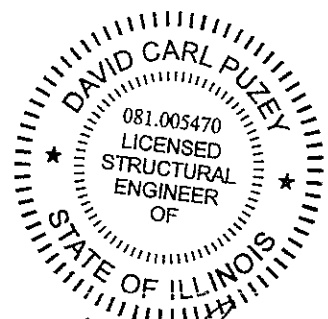
DECK PLAN

TOTA BILL OF MATERIALS

ITEM	UNIT	QUANTITY
REINFORCEMENT BARS, EPOXY COATED	POUND	1230
CONCRETE SUPERSTRUCTURE	CU.YD.	7.50
CONCRETE REMOVAL	CU.YD.	7.75
EPOXY CRACK INJECTION	FOOT	65
STRUCTURAL REPAIR OF CONCRETE DEPTH <5"	SO.FT.	10
DRAINAGE STRUCTURES TO BE CLEANED*	EACH	7
BRIDGE DECK CONCRETE SEALER	SO.FT.	1800
PREFORMED JOINT STRIP SEAL	FOOT	90
CLASS "D" PATCH	SO.YD.	20
CONCRETE BRIDGE DECK SCARIFICATION 3/8"	SO.YD.	498
BRIDGE DECK THIN POLYMER OVERLAY 3/8"	SO.YD.	498
PCC SIDEWALK 5"	SO.FT.	50



TYPICAL CROSS SECTION (LOOKING EAST)



*Da Carl Puzey 1/27/2020
Expires 1/30/2020*

MODEL: Default
FILE NAME: \\p\baranogm.d\illinois\p\p\p\DOT\Documents\DOT - Office\B\Barf, L\Projects\Struct\ICAD\baranogm\022-0211.dwg

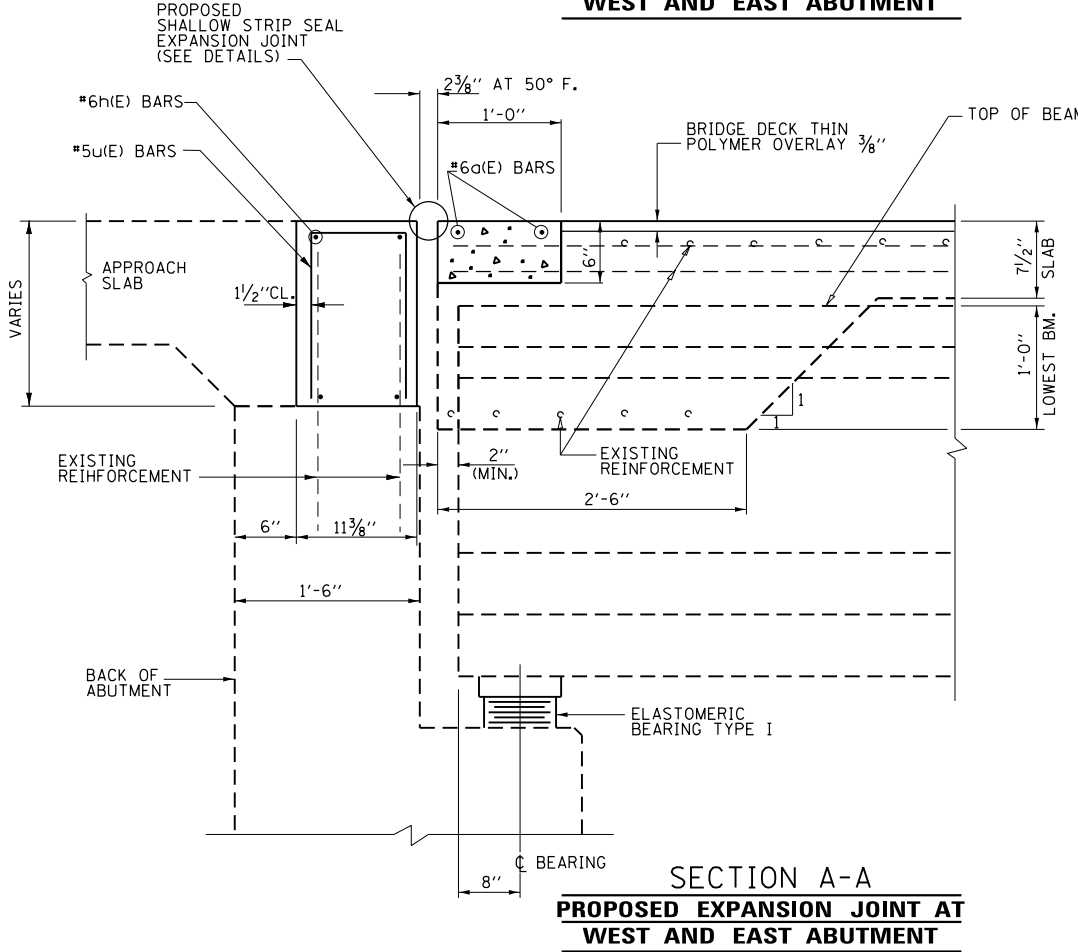
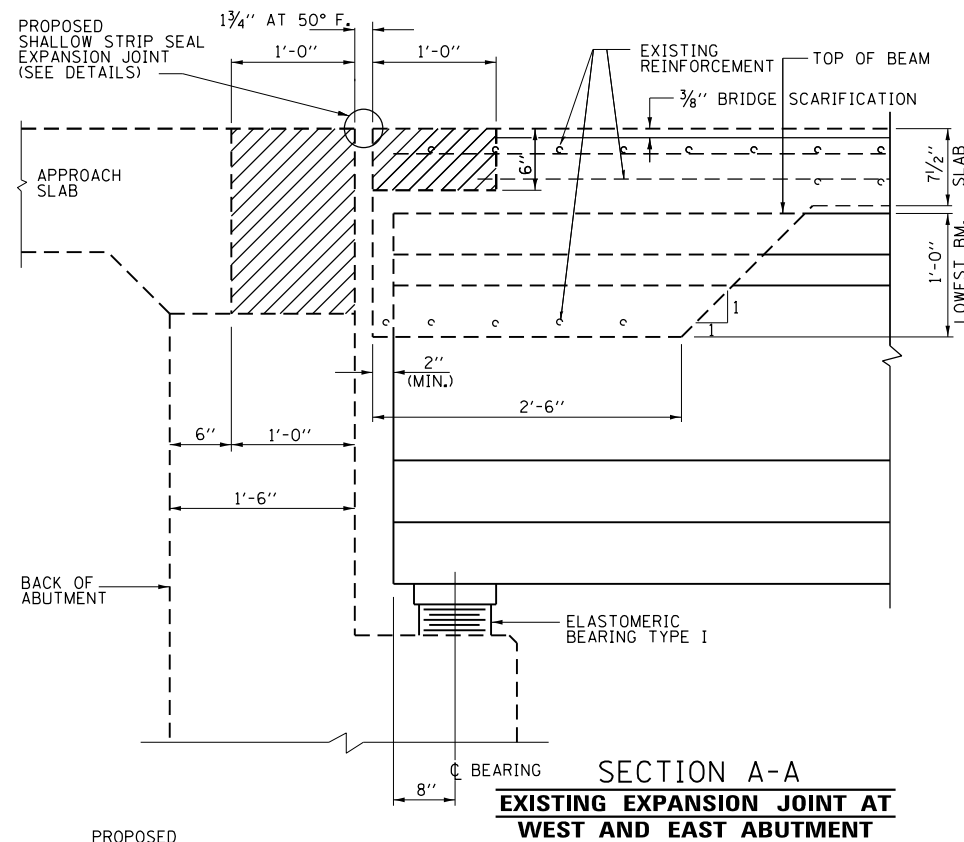
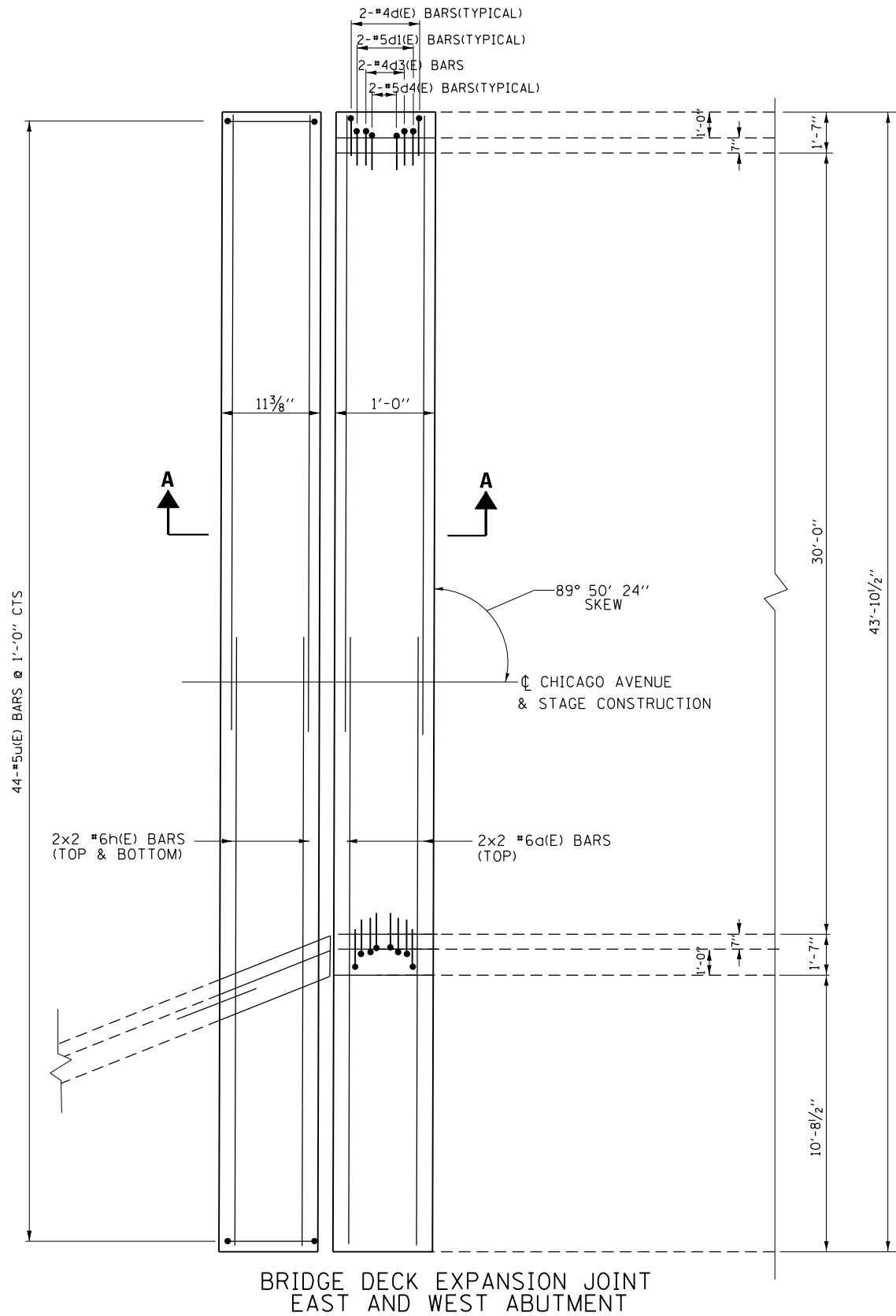
USER NAME = mdylja	DESIGNED - MVT	REVISED -
	DRAWN - MVT	REVISED -
PLOT SCALE = 100.0000 * / in.	CHECKED - MJA	REVISED -
PLOT DATE = 1/24/2020	DATE -	REVISED -

STATE OF ILLINOIS
DEPARTMENT OF TRANSPORTATION

CHICAGO AVE. OVER IL. 83
BRIDGE REPAIRS
S.N. 022-0211

F.A.P. RTE. 344	SECTION 2019-061-BR	COUNTY DUNAGE	TOTAL SHEETS 17	SHEET NO. 6
SCALE:		SHEET 1 OF 10 SHEETS STA.	TO STA.	
ILLINOIS		FED. AID PROJECT		

CONTRACT NO. 62J38

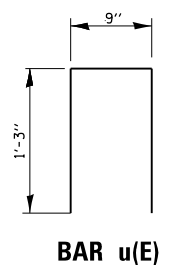


BILL OF MATERIALS

BAR	NO.	SIZE	LENGTH	SHARE
a(E)	8	#6	23'-11"	
d(E)	8	#4	3'-0"	L
d1(E)	8	#5	3'-0"	L
d3(E)	8	#4	3'-10"	L
d4(E)	4	#5	2'-7"	L
h(E)	16	#6	23'-11"	
u(E)	88	#5	3'-3"	L
REINFORCEMENT BARS, EPOXY COATED			POUND	1230
CONCRETE REMOVAL			CU.YD.	7.75
CONCRETE SUPERSTRUCTURE			CU.YD.	7.50

MINIMUM BAR LAP

SIZE	LAP
#6	4'-5"



MODEL: Default
 FILE: Model - Proj\publ\room.dwg
 PROJECTS\STRUCT\OFFICE\DIRTET\1\Projects\Struct\1\CA\0000\022-0211.dgn

USER NAME = midyja	DESIGNED - MVT	REVISED -
DRAWN - MVT	REVISIONS -	
PLOT SCALE = 100,0000 ' / in.	CHECKED - MJA	REVISED -
PLOT DATE = 1/24/2020	DATE -	REVISED -

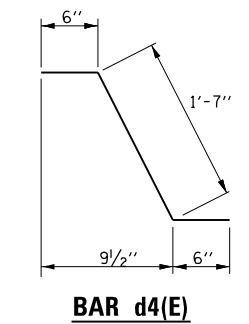
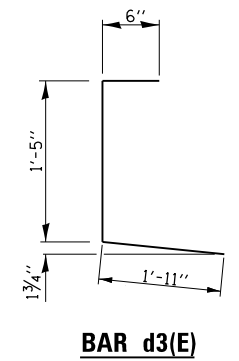
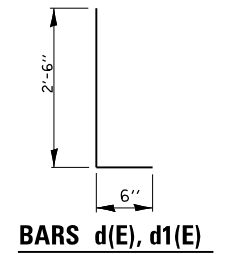
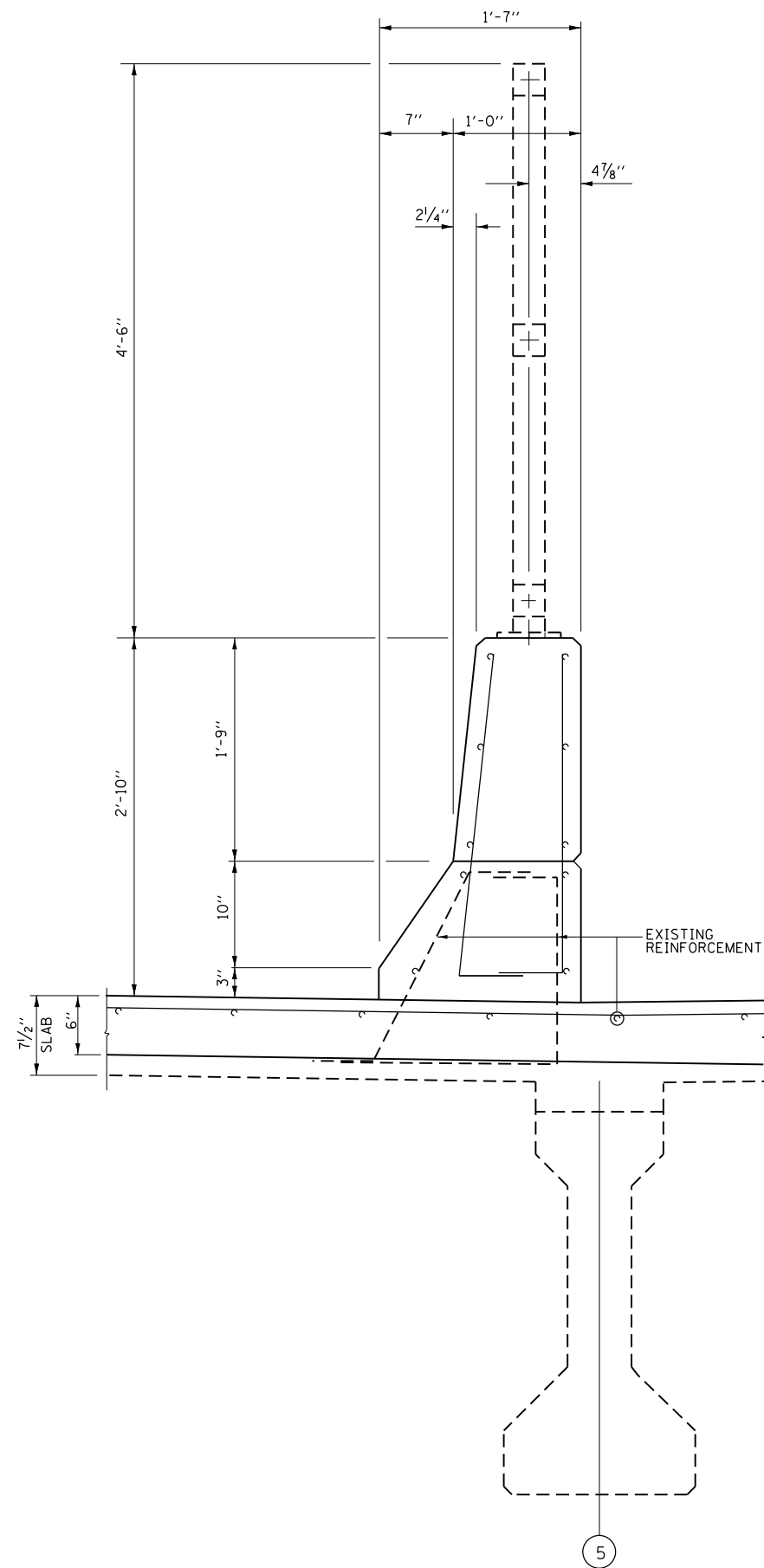
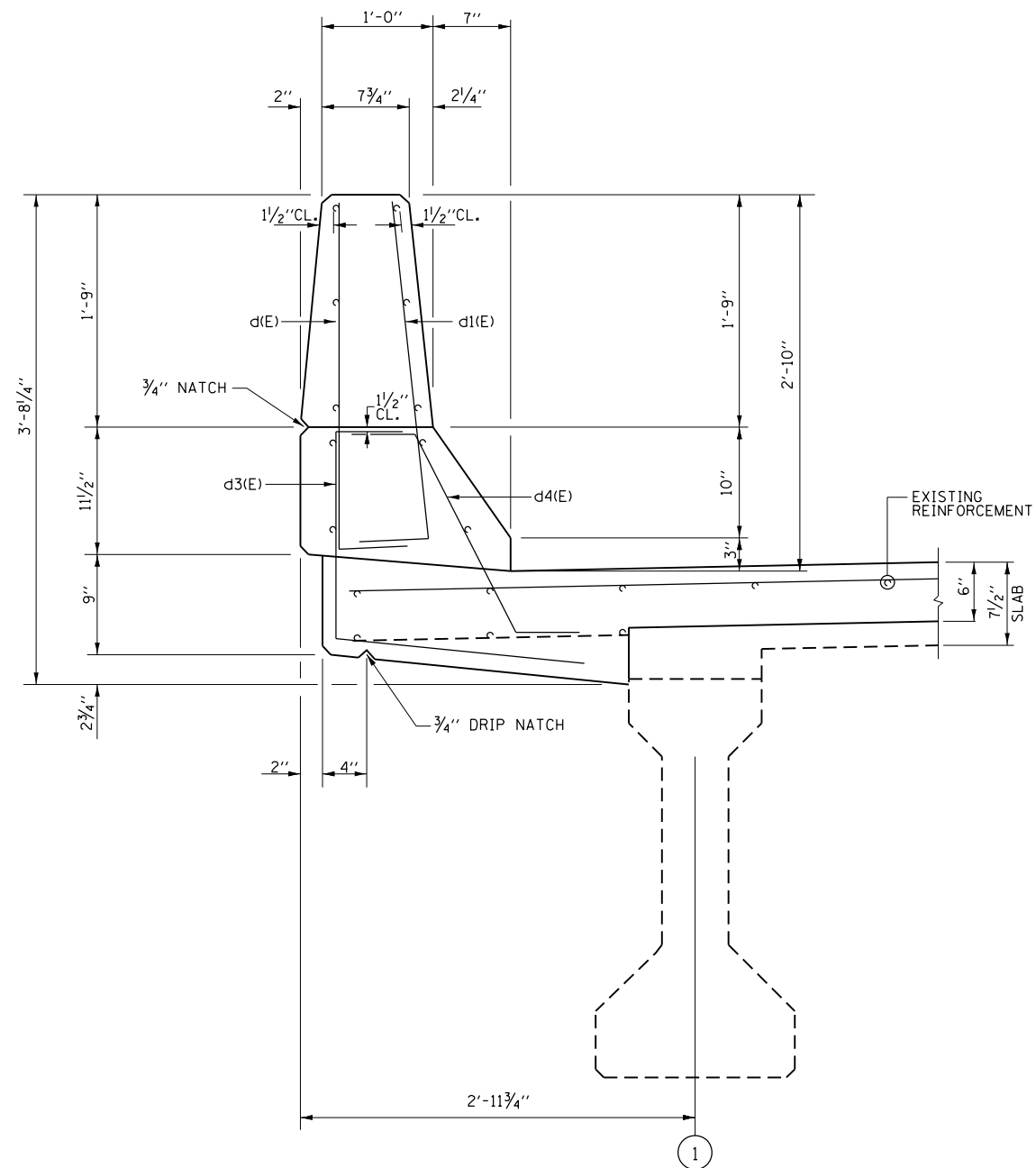
**STATE OF ILLINOIS
DEPARTMENT OF TRANSPORTATION**

**CHICAGO AVE. OVER IL. 83
BRIDGE REPAIRS
S.N. 022-0211**

F.A.P. RTE. 344	SECTION 2019-061-BR	COUNTY DUPAGE	TOTAL SHEETS 17	SHEET NO. 7
CONTRACT NO. 62J38			ILLINOIS FED. AID PROJECT	

SCALE: SHEET 2 OF 10 SHEETS STA. TO STA.

MODEL: Default
 FILE: A:\m1015_2020\pub\pubroom.dwg
 PROJECTS\STRUCTURE\1\CA000\Bridges\022-0211.dgn



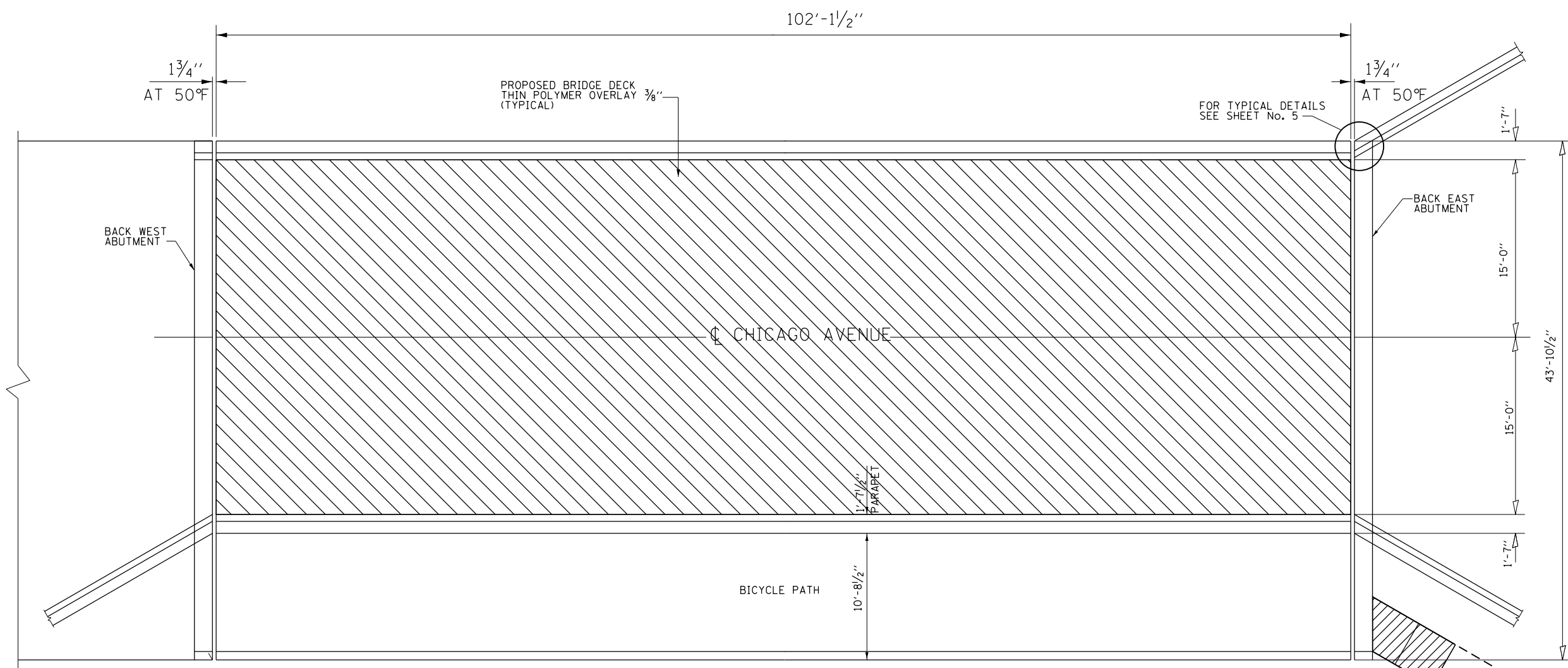
USER NAME = midyja	DESIGNED - MVT	REVISED - MVT
DRAWN - MVT	REVISED - MVT	
PLOT SCALE = 100.0000 ' / in.	CHECKED - MJA	REVISED - MJA
PLOT DATE = 1/23/2020	DATE -	REVISED -

**STATE OF ILLINOIS
 DEPARTMENT OF TRANSPORTATION**

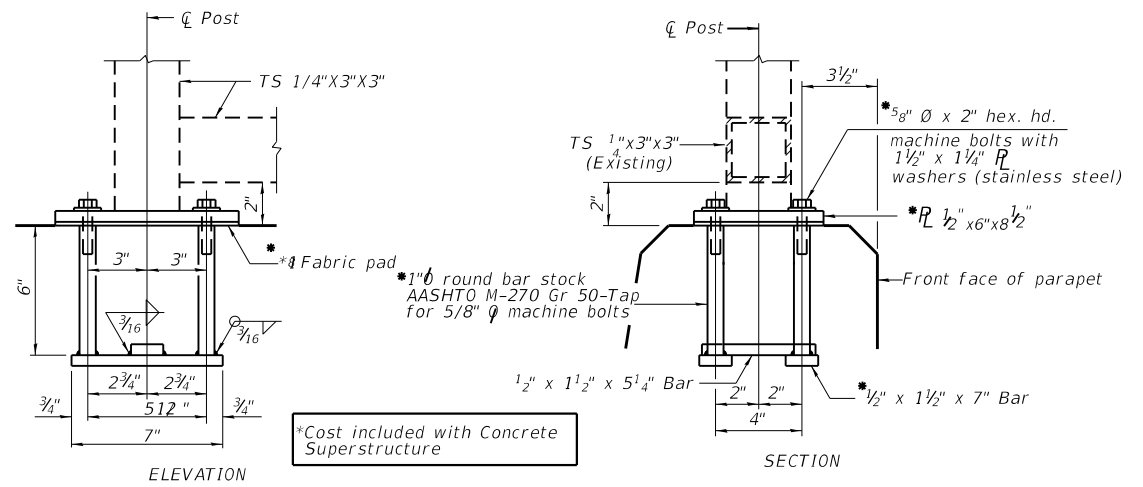
**CHICAGO AVE. OVER IL. 83
 BRIDGE REPAIRS
 S.N. 022-0211**

SCALE: SHEET 3 OF 10 SHEETS STA. TO STA.

F.A.P. RTE.	SECTION	COUNTY	TOTAL SHEETS	SHEET NO.
344	2019-061-BR	DUPAGE	17	8
CONTRACT NO. 62J38				
ILLINOIS FED. AID PROJECT				



DECK PLAN



RAIL POST REMOVAL AND REPLACEMENT DETAILS ON PARAPETS

NOTE:

REATTACH RAIL POST. THE CONTRACTOR MUST VERIFY LOCATIONS AND SIZES OF EXISTING HOLES PRIOR TO ORDERING 3/4" Ø XX PIPES, BARS, CAP SCREWS AND STANDARD FLAT WASHERS. REINSTALL RAILS AFTER CONCRETE SUPERSTRUCTURE IS COMPLETED. COST INCLUDED WITH CONCRETE SUPERSTRUCTURE. IN LIEU OF THE CAST-IN-PLCE ANCHOR DEVICE SHOWN, THE CONTRACTOR HAS THE OPTION OF DRILLING AND SETTING STAINLESS STEEL ANCHOR RODS OF THE SAME DIAMETER AND GRADE AS THE SPECIFIED CAP SCREWS ACCORDING TO ARTICLE 509.06 OF THE STANDARD SPECIFICATIONS. EMBEDMENT SHALL BE ACCORDING TO THE MANUFACTURER'S SPECIFICATIONS. COST INCLUDED WITH CONCRETE SUPERSTRUCTURE.

NOTE:

CONCRETE SEALER (SIDEWALK TOP AND SIDES OF PARAPET)

LEGEND:

- BRIDGE DECK THIN POLYMER CONCRETE 3/8"
- CONCRETE BRIDGE DECK SCARIFICATION 3/8"
- PCC SIDEWALK 5"

BILL OF MATERIALS

ITEM	UNIT	QUANTITY
BRIDGE DECK THIN POLYMER CONCRETE 3/8"	SQ.YD.	498
PCC SIDEWALK 5"	SQ.FT.	50

MODEL: Default
FILE: A:\mtdc_p\pub\barroom.dwg
PROJECTS\STRUCT\1\CA00\Drawn\Drawn022-0211.dwg

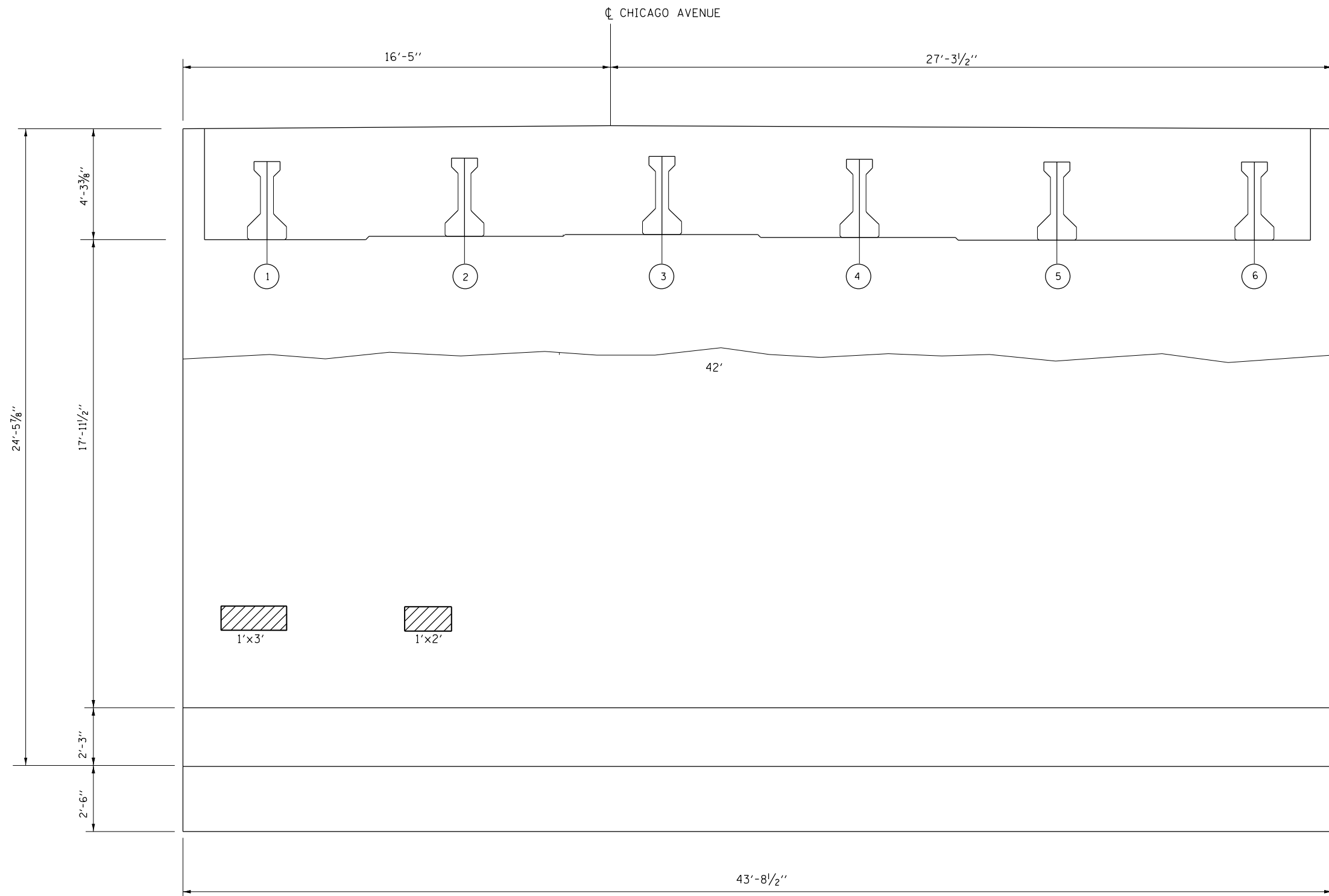
USER NAME = midyja	DESIGNED - MVT	REVISED -
PLOT SCALE = 100.0000' / in.	DRAWN - MVT	REVISED -
PLOT DATE = 1/24/2020	CHECKED - MJA	REVISED -
	DATE -	REVISED -

**STATE OF ILLINOIS
DEPARTMENT OF TRANSPORTATION**

**CHICAGO AVE. OVER IL. 83
BRIDGE DECK REPAIR
S.N. 022-0211**

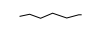
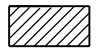
SCALE: SHEET 4 OF 10 SHEETS STA. TO STA.

F.A.P. RTE. 344	SECTION 2019-061-BR	COUNTY DUPAGE	TOTAL SHEETS 17	SHEET NO. 9
CONTRACT NO. 62J38				
ILLINOIS FED. AID PROJECT				



EAST ABUTMENT

LEGEND:

-  EPOXY CRACK INJECTION
-  STRUCTURAL REPAIR OF CONCRETE DEPTH <5\"/>

BILL OF MATERIALS

ITEM	UNIT	QUANTITY
EPOXY CRACK INJECTION	FOOT	42
STRUCTURAL REPAIR OF CONCRETE DEPTH <5\"/>	SQ.FT.	5

MODEL: Default
 FILE: Abutment_Plan.dwg
 PROJECT: I:\Projects\Struct\1\CA08\Abutment.dwg
 DATE: 1/23/2020

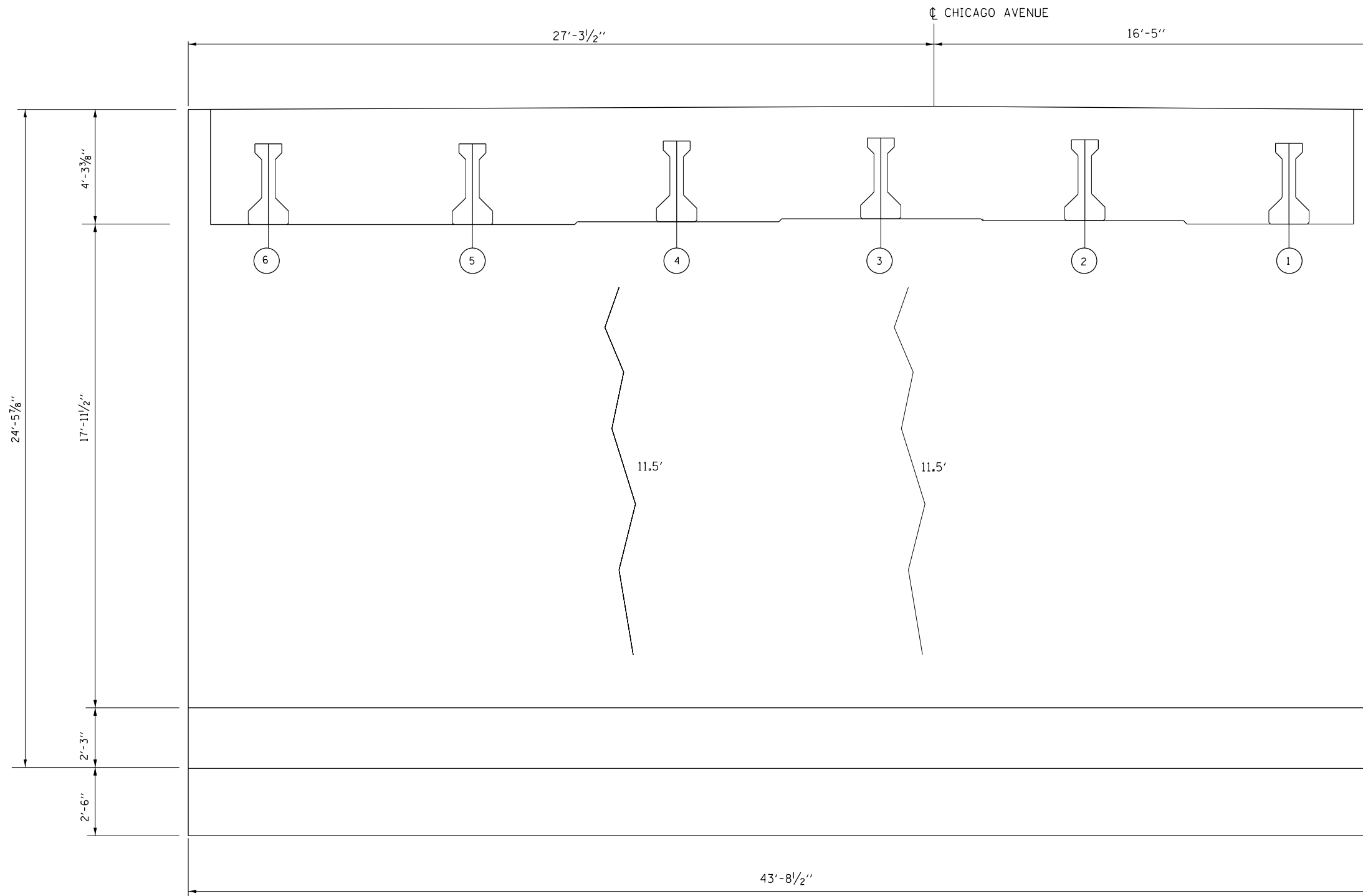
USER NAME = midyja	DESIGNED - MVT	REVISED -
PLOT SCALE = 100.0000' / in.	DRAWN - MVT	REVISED -
PLOT DATE = 1/23/2020	CHECKED - MJA	REVISED -
	DATE -	REVISED -

STATE OF ILLINOIS
DEPARTMENT OF TRANSPORTATION

CHICAGO AVE. OVER IL. 83
EAST ABUTMENT REPAIR
S.N. 022-0211

SCALE: SHEET 5 OF 10 SHEETS STA. TO STA.

F.A.P. RTE. 344	SECTION 2019-061-BR	COUNTY DUPAGE	TOTAL SHEETS 17	SHEET NO. 10
CONTRACT NO. 62138				ILLINOIS FED. AID PROJECT



WEST ABUTMENT

LEGEND:

~ EPOXY CRACK INJECTION

BILL OF MATERIALS

ITEM	UNIT	QUANTITY
EPOXY CRACK INJECTION	FOOT	23

MODEL: Default
 FILE: \\nas01c.pw.us.ibm.com\data\illinois.gov\PW\DOT\Documents\DOT_Offices\Illinet\1\Projects\Struct\1\CA\00\Abutment\022-0211.dgn

USER NAME = midyja	DESIGNED - MVT	REVISED -
	DRAWN - MVT	REVISED -
PLOT SCALE = 100.0000 ' / in.	CHECKED - MJA	REVISED -
PLOT DATE = 1/23/2020	DATE -	REVISED -

**STATE OF ILLINOIS
DEPARTMENT OF TRANSPORTATION**

**CHICAGO AVE. OVER IL. 83
WEST ABUTMENT REPAIR
S.N. 022-0211**

SCALE: SHEET 6 OF 10 SHEETS STA. TO STA.

F.A.P. RTE.	SECTION	COUNTY	TOTAL SHEETS	SHEET NO.
344	2019-061-BR	DUPAGE	17	11
			CONTRACT NO. 62J38	
		ILLINOIS	FED. AID PROJECT	

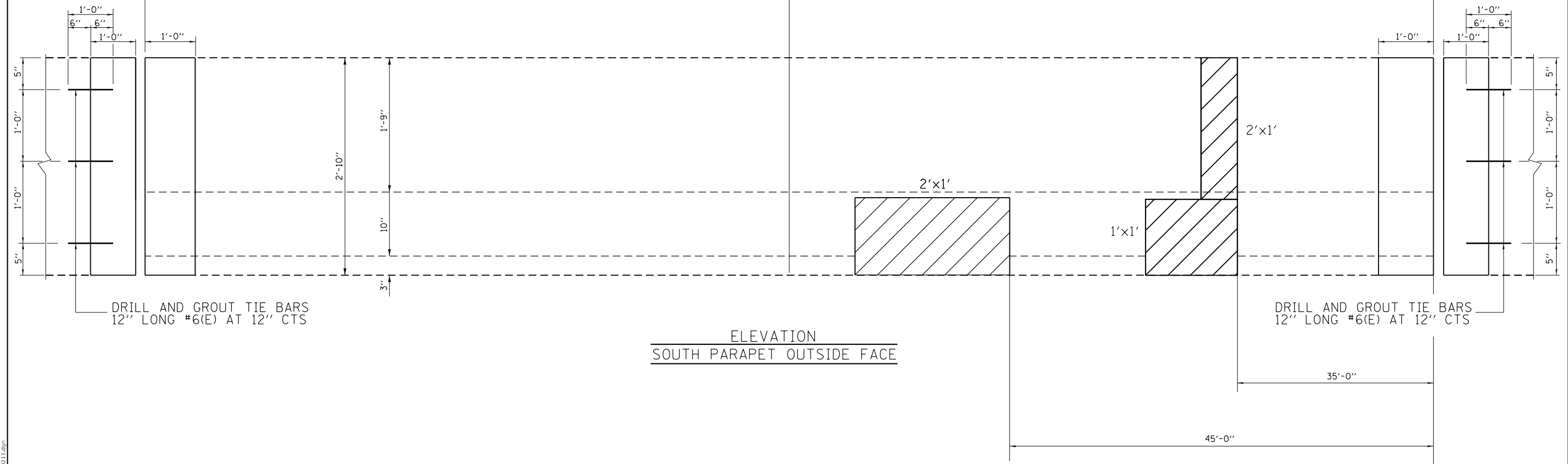


102'-1 1/2"

51'-0 3/4"

PIER

51'-0 3/4"



DRILL AND GROUT TIE BARS
12" LONG #6(E) AT 12" CTS

DRILL AND GROUT TIE BARS
12" LONG #6(E) AT 12" CTS

ELEVATION
SOUTH PARAPET OUTSIDE FACE

LEGEND:

STRUCTURAL REPAIR OF CONCRETE
DEPTH ≤ 5"

BILL OF MATERIALS

ITEM	UNIT	QUANTITY
STRUCTURAL REPAIR OF CONCRETE DEPTH ≤ 5"	SQ.FT.	5

MODEL: Default
FILE: \\nas101.pw.state.il.us\pww\DOT\Documents\DOT_Offices\Director_1\Projects\Struct\1\CA000\022-0211.dgn

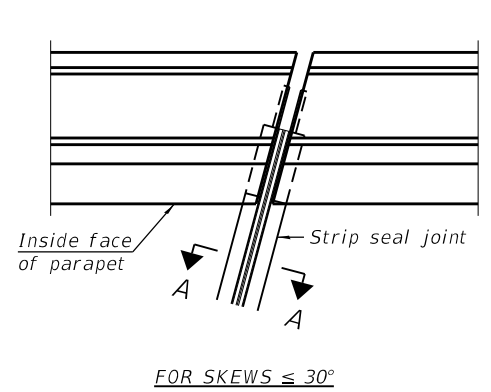
USER NAME = midyja	DESIGNED - MVT	REVISED -
	DRAWN - MVT	REVISED -
PLOT SCALE = 100.0000 ' / in.	CHECKED - MJA	REVISED -
PLOT DATE = 1/23/2020	DATE -	REVISED -

STATE OF ILLINOIS
DEPARTMENT OF TRANSPORTATION

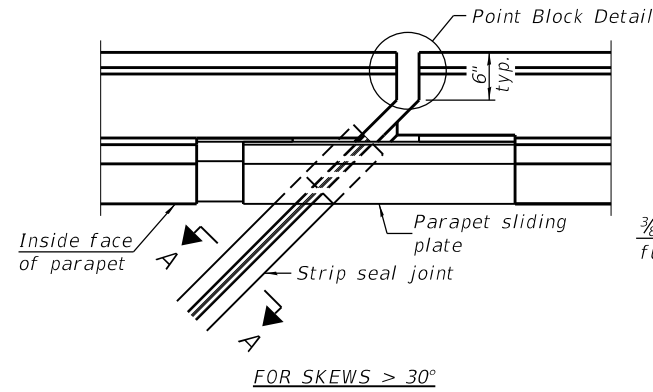
CHICAGO AVE. OVER IL. 83
PARAPET DETAILS
S.N. 022-0211

SCALE: SHEET 7 OF 10 SHEETS STA. TO STA.

F.A.P. RTE.	SECTION	COUNTY	TOTAL SHEETS	SHEET NO.
344	2019-061-BR	DUPAGE	17	12
CONTRACT NO. 62J38			ILLINOIS FED. AID PROJECT	

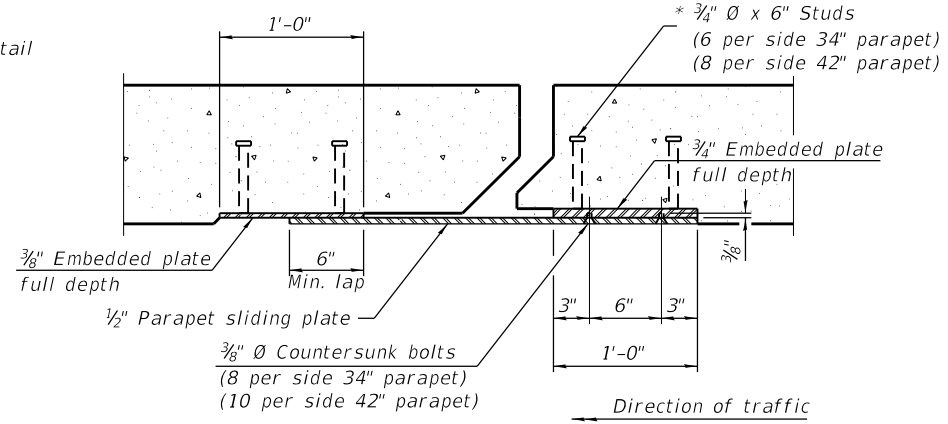


FOR SKEWS $\leq 30^\circ$

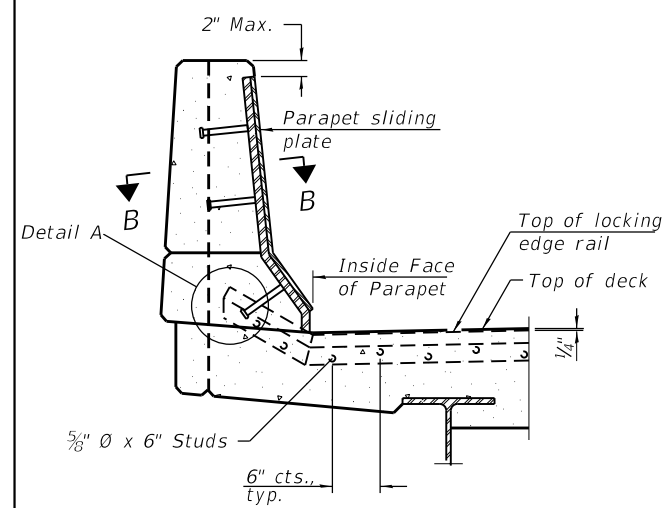


FOR SKEWS $> 30^\circ$

PLAN AT PARAPET

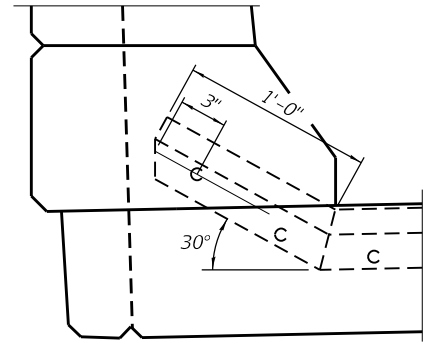


SECTION B-B

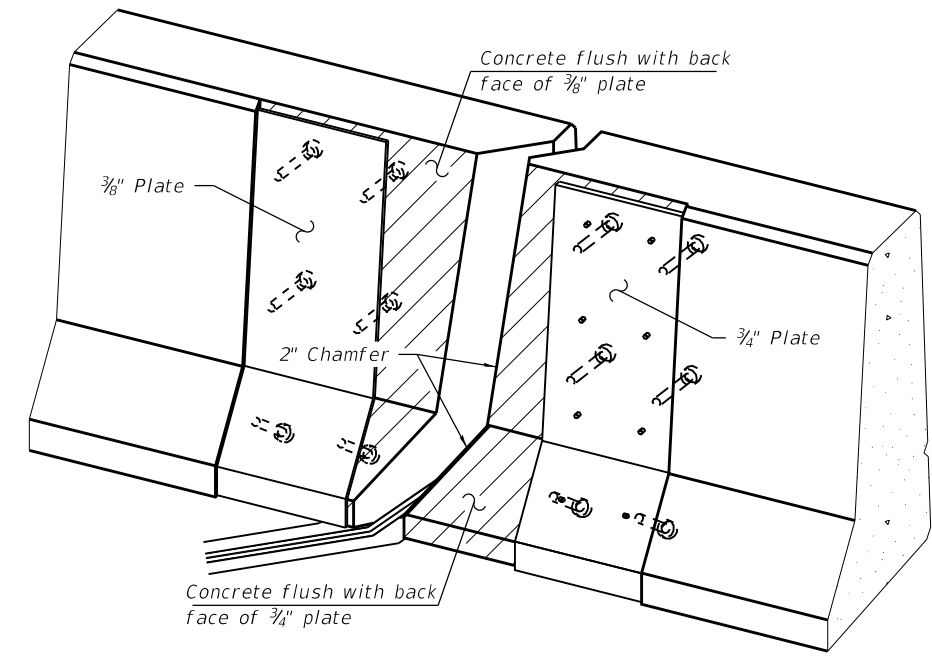


ELEVATION AT PARAPET

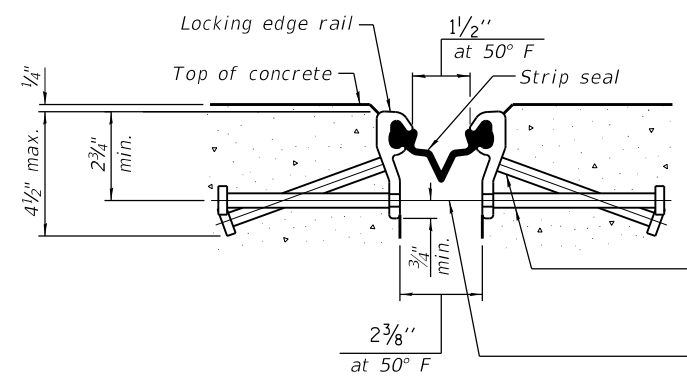
(Skews $> 30^\circ$ shown. Skews $\leq 30^\circ$ similar except as shown in plan view.)



DETAIL A



TRIMETRIC VIEW
(Showing embedded plates only)



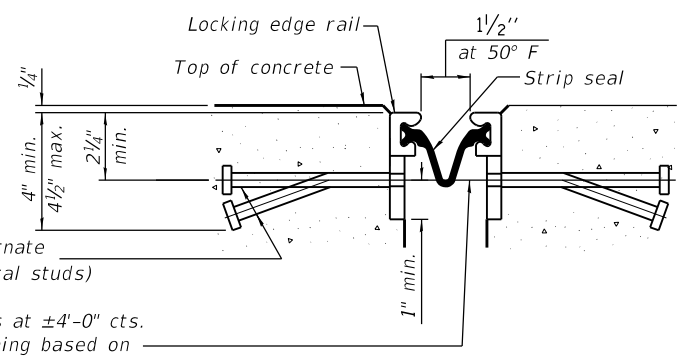
SHOWING ROLLED RAIL JOINT

* $5/8"$ ϕ x 6" studs @ 6" cts. (alternate angled/bent studs with horizontal studs)

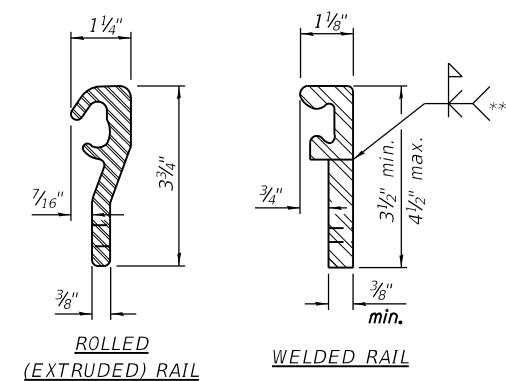
$3/8"$ ϕ threaded rods in $7/16"$ ϕ holes at $\pm 4'-0"$ cts. for holding the proper joint opening based on the temperature during the deck pour. Place to miss studs. All rods shall be burned, or sawed off flush with the plates after concrete is set.

SECTION A-A

* Granular or solid flux filled headed studs conforming to Article 1006.32 of the Std. Specs., automatically end welded.

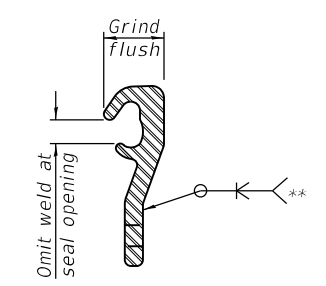


SHOWING WELDED RAIL JOINT



LOCKING EDGE RAILS

** Back gouge not required if complete joint penetration is verified by mock-up.



LOCKING EDGE RAIL SPLICE

The inside of the locking edge rail groove shall be free of weld residue. Rolled rail shown, welded rail similar.

BILL OF MATERIAL

Item	Unit	Total
Preformed Joint Strip Seal	Foot	90

Notes:
The strip seal shall be made continuous and shall have a minimum thickness of $1/4"$. The configuration of the strip seal shall match the configuration of the locking edge rails. Open or "webbed" strip seal gland configurations are not permitted. The gland shall be sized for a maximum rated movement of 4 inches.

The locking edge rails depicted are configured for typical applications and are conceptual only. The actual configuration of the locking edge rails and matching strip seal may vary from manufacturer to manufacturer provided they fit the application and meet the minimum anchorage shown. Flanged edge rails, however, will not be allowed. Locking edge rails may exceed the $4 1/2"$ maximum depth provided the anchorage system is revised according to the manufacturer's recommendation.

The manufacturer's recommended installation methods shall be followed.

All steel components shall be galvanized after fabrication according to Article 520.03 of the Standard Specifications.

The Maximum space between locking edge rail segments shall be $3/16"$ and sealed with a suitable sealant; however, any rail joint within 10' measured perpendicular to the face of the curb or parapet shall be welded as shown in the locking edge rail splice detail.

The top surface of sidewalk sliding plates shall have a raised pattern according to ASTM A786.

Cost of parapet sliding plates, sidewalk sliding plates, embedded plates, anchorage studs, and expansion anchors included with Preformed Joint Strip Seal.

34" F-shape barrier shown, 42" F-shape similar as noted.

The concrete opening below the strip seal will vary based on the locking edge rail chosen by the Contractor. Deck and parapet lengths shown elsewhere in the plans are dimensioned to the concrete opening, not the joint opening, and are based on the rolled locking edge rail. If the Contractor elects to use a different locking edge rail, dimensional adjustments may be required. One exception to this would be the strip seal joint at the end of the precast bridge approach slab. For these cases the pavement connector length shall be adjusted, not the length of the bridge approach slab.

MODEL: Default
FILE: \\nas01\pub\barcom\ada\illinois\gov\pww\DOT\Documents\IBDOT_Offices\Bartlett_1\Projects\Struct\1\CAD\Drawings\02-0211.dgn

EJ-SS-S

8-11-17

(Sheet 1 of 3)

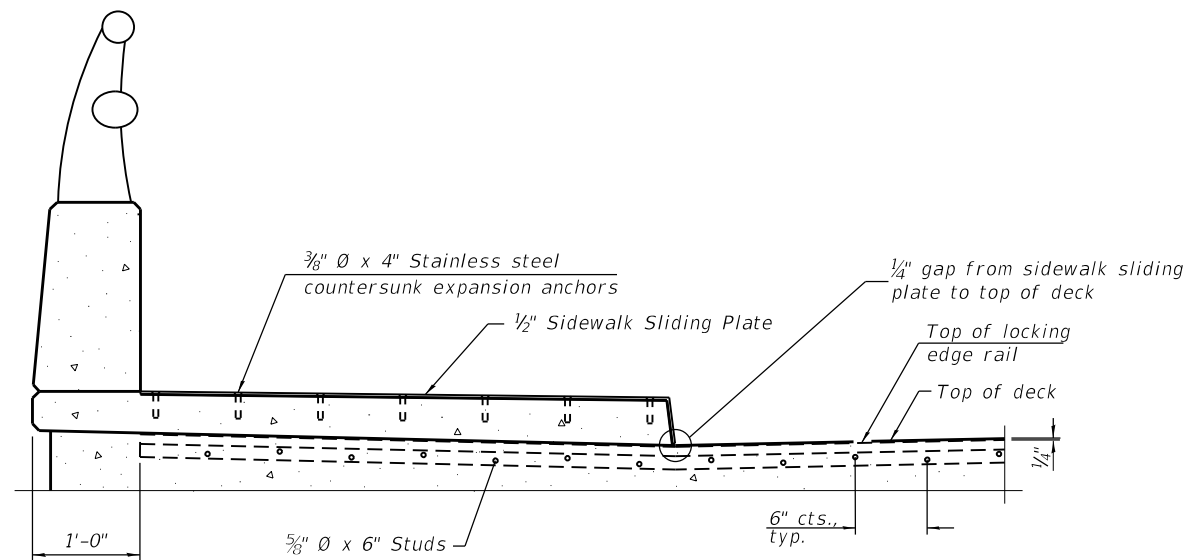
USER NAME = midyja	DESIGNED -	REVISED -
PLOT SCALE = 100,0000' / in.	DRAWN -	REVISED -
PLOT DATE = 1/23/2020	CHECKED -	REVISED -
	DATE -	REVISED -

STATE OF ILLINOIS
DEPARTMENT OF TRANSPORTATION

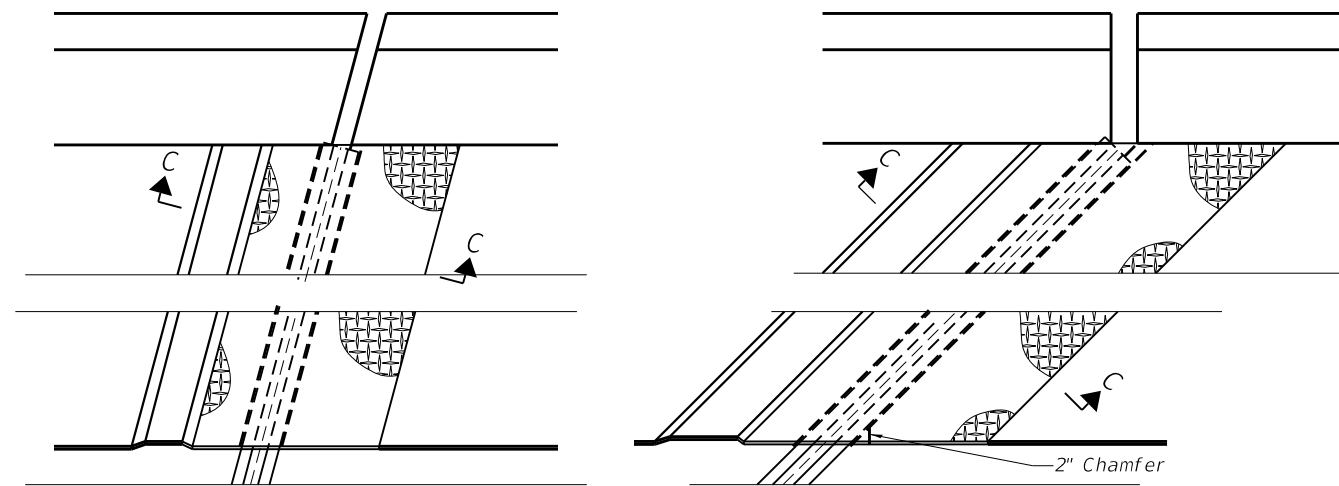
CHICAGO AVE. OVER IL. 83
PREFORMED JOINT STRIP SEAL
S.N. 022-0211

SCALE: SHEET 8 OF 10 SHEETS STA. TO STA.

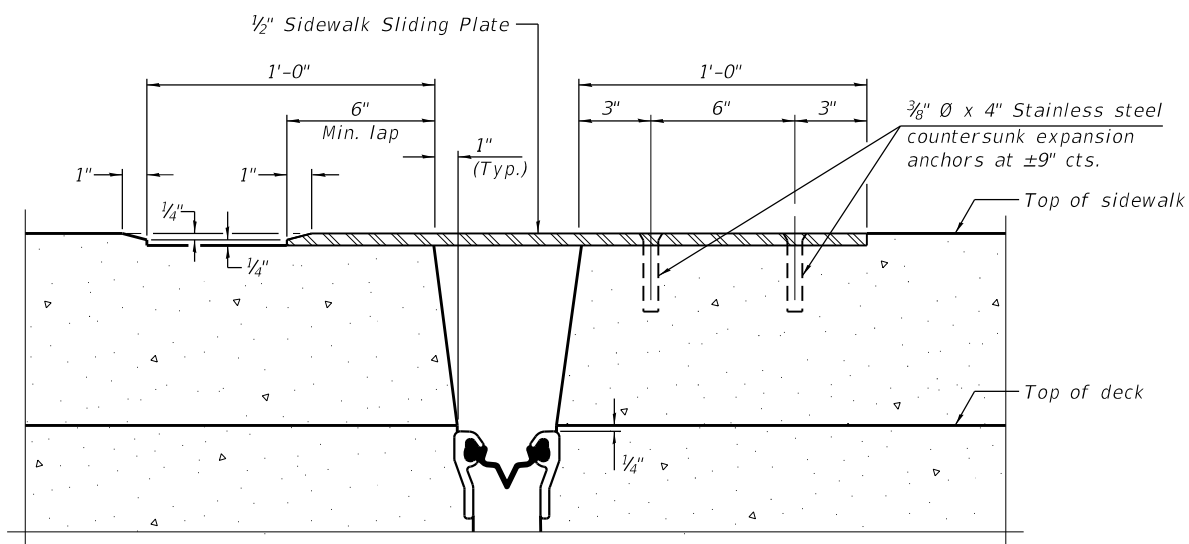
F.A.P. RTE. 344	SECTION 2019-061-BR	COUNTY DUPAGE	TOTAL SHEETS 17	SHEET NO. 13
ILLINOIS FED. AID PROJECT			CONTRACT NO. 62J38	



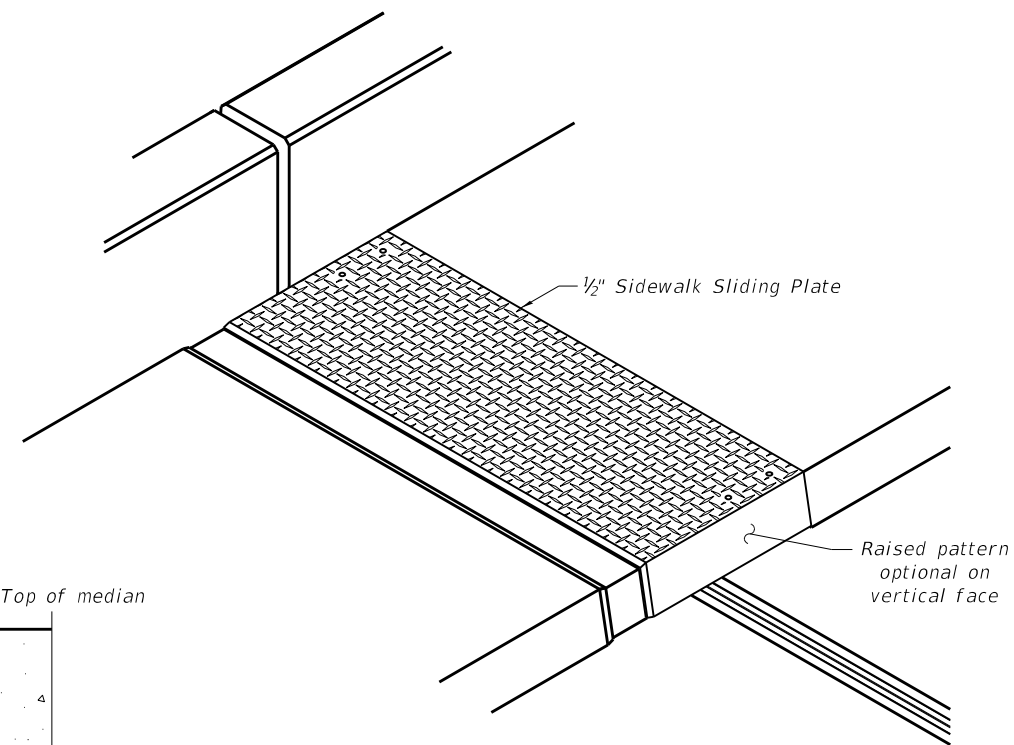
ELEVATION AT RAISED SIDEWALK



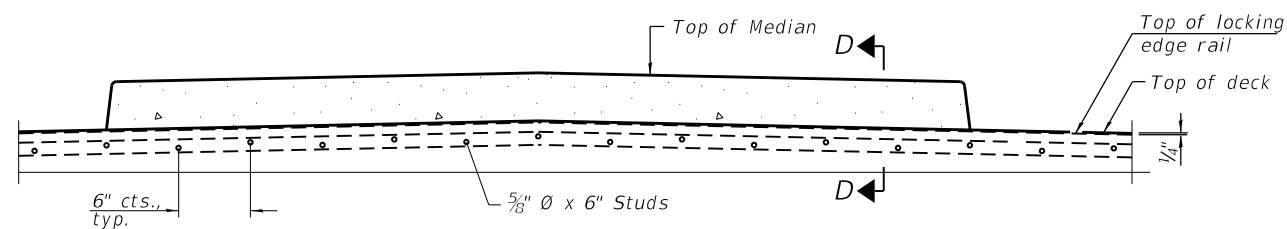
PLAN AT RAISED SIDEWALK



SECTION C-C

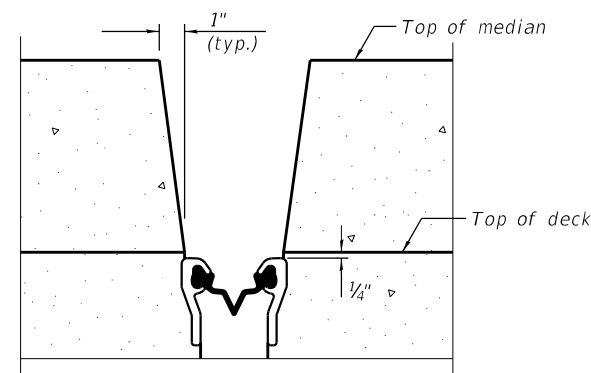


TRIMETRIC VIEW



ELEVATION AT MEDIAN

For skews $> 30^\circ$, chamfer acute corners 2" similar to sidewalk.



SECTION D-D

(at Rt. L's)

(Sheet 2 of 3)

EJ-SS-S 8-11-17

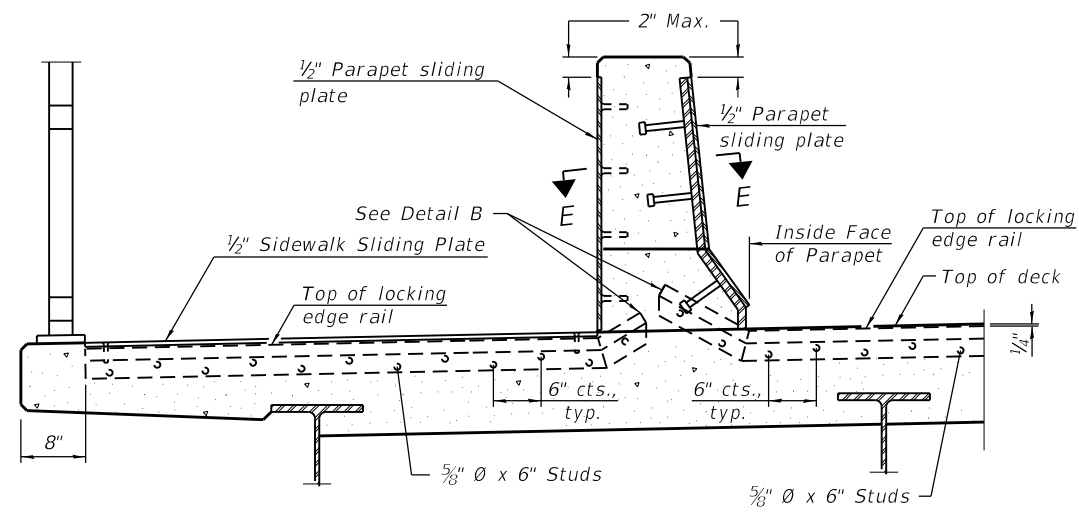
STATE OF ILLINOIS
DEPARTMENT OF TRANSPORTATION

CHICAGO AVE. OVER IL. 83
PREFORMED JOINT STRIP SEAL - SIDEWALK
S.N. 022-0211

F.A.P. RTE.	SECTION	COUNTY	TOTAL SHEETS	SHEET NO.
344	2019-061-BR	DUPAGE	17	14
CONTRACT NO. 62J38				

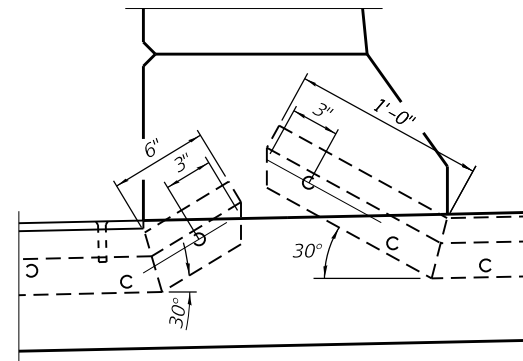
SCALE: SHEET 9 OF 10 SHEETS STA. TO STA.

ILLINOIS FED. AID PROJECT

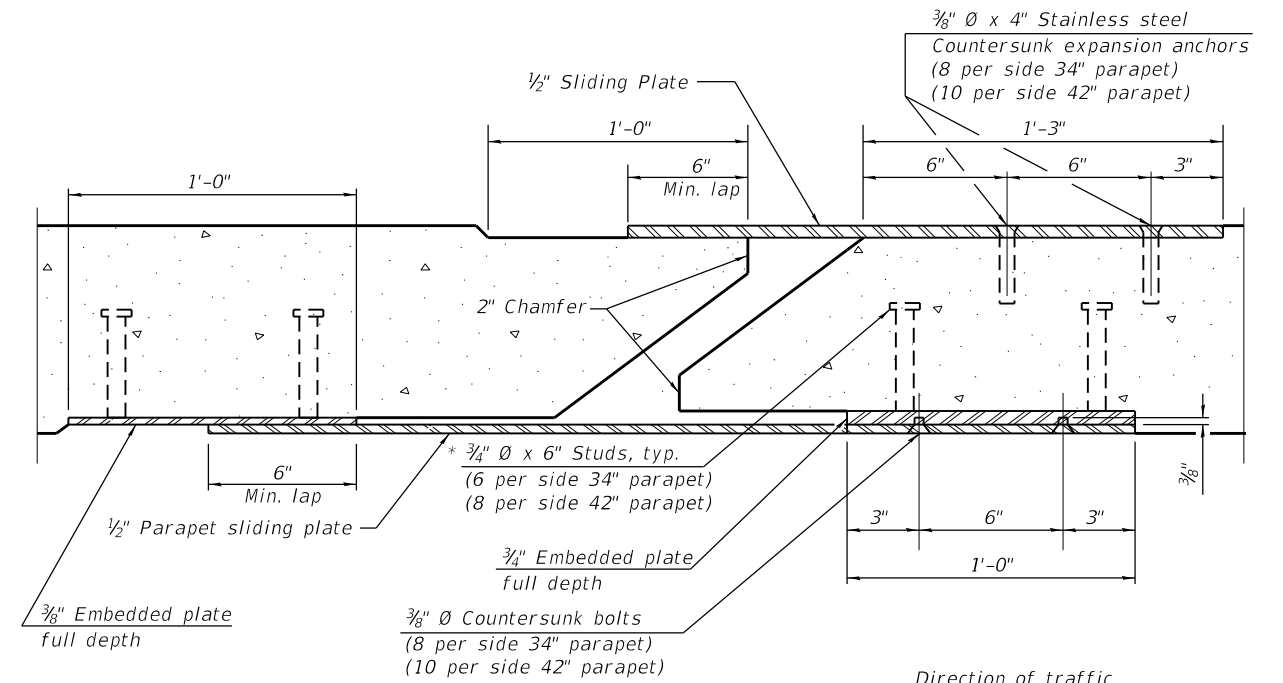


ELEVATION AT DECK LEVEL SIDEWALK

(Skews > 30° shown. Skews ≤ 30° similar except as shown in plan view.)

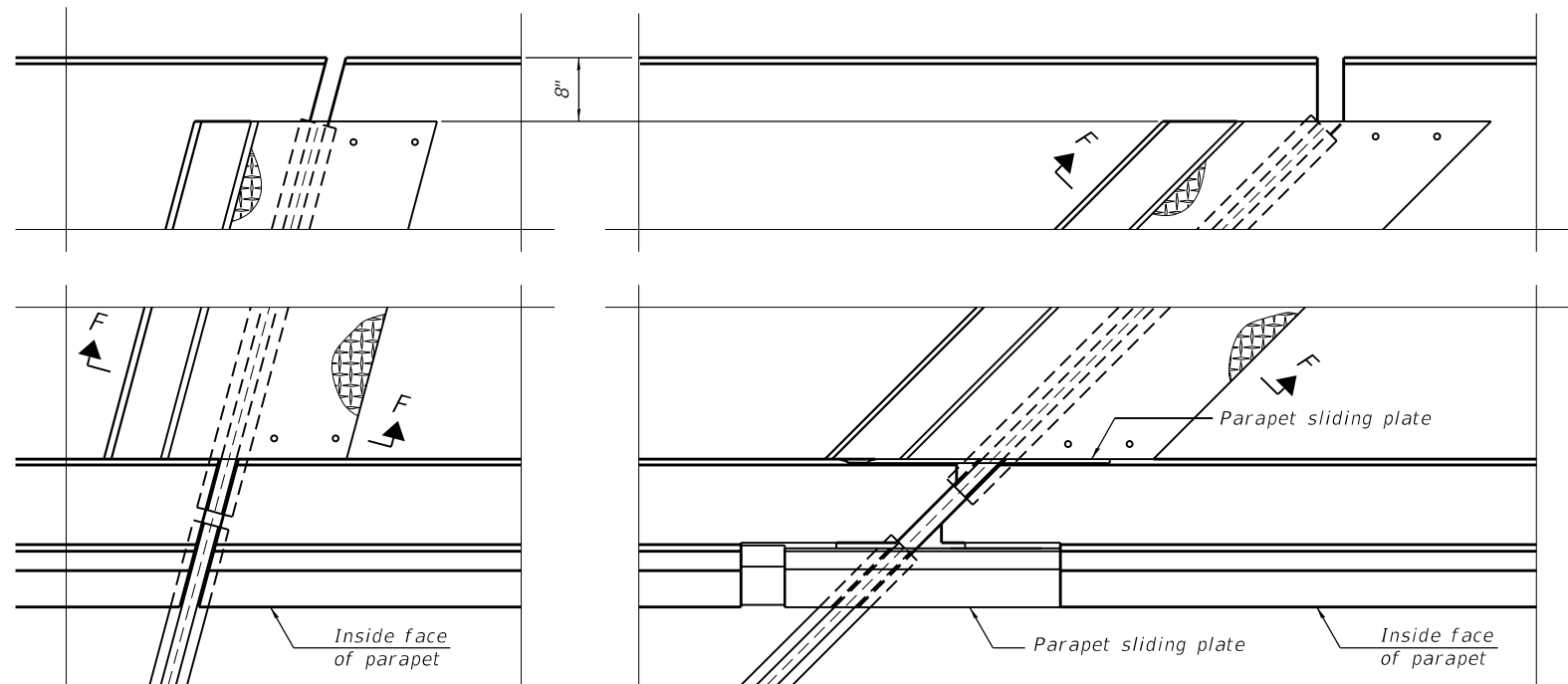


DETAIL B

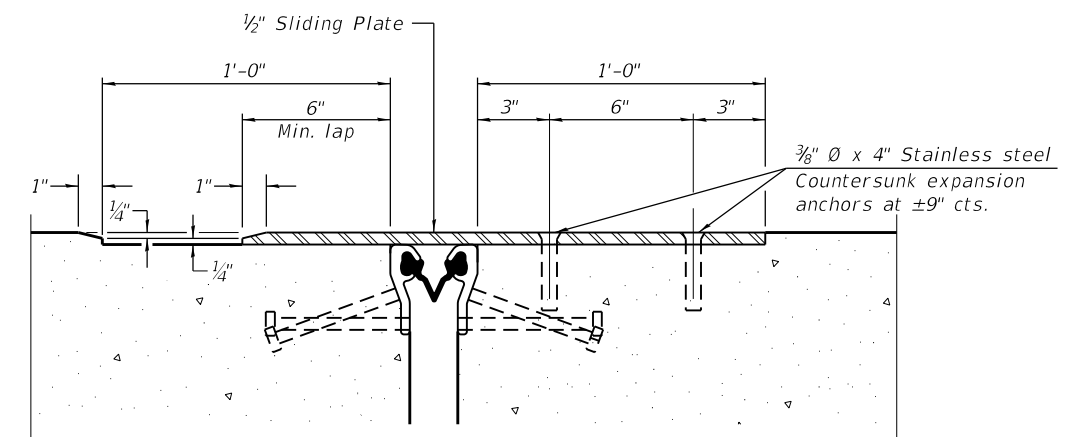


SECTION E-E

Direction of traffic



PLAN AT DECK LEVEL SIDEWALK



SECTION F-F

EJ-SS-S

8-11-17

(Sheet 3 of 3)

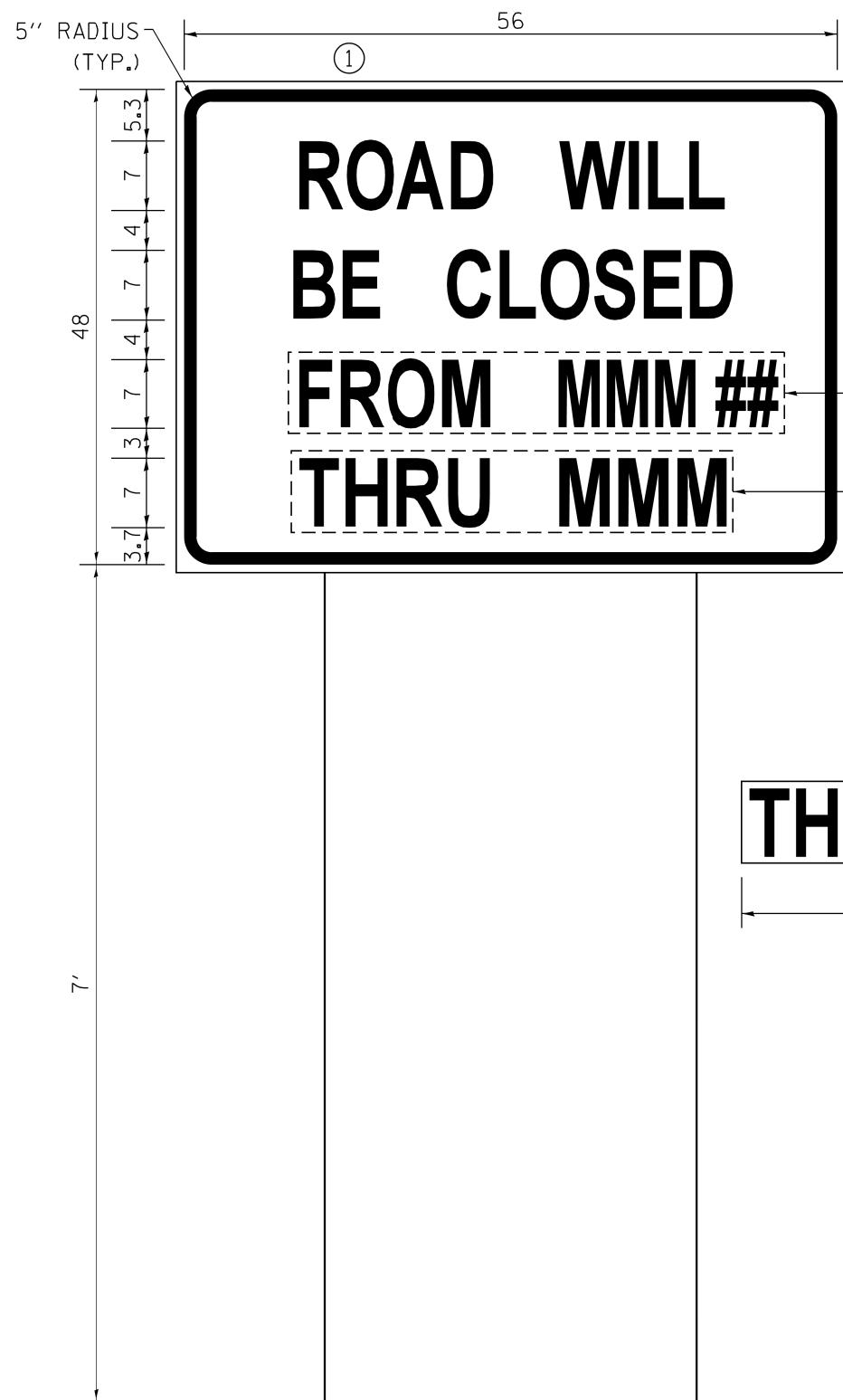
MODEL: Default
 FILE: \\nas01c.pw.state.il.us\pub\baronm.d\at\illinois.gov\PIWDOT\Documents\DOT_Offices\ID\refc_1\Projects\Struct\1\CA\00\00\00\00\022-0211.dgn

USER NAME = midyja	DESIGNED -	REVISED -
PLOT SCALE = 100.0000' / in.	DRAWN -	REVISED -
PLOT DATE = 1/23/2020	CHECKED -	REVISED -
	DATE -	REVISED -

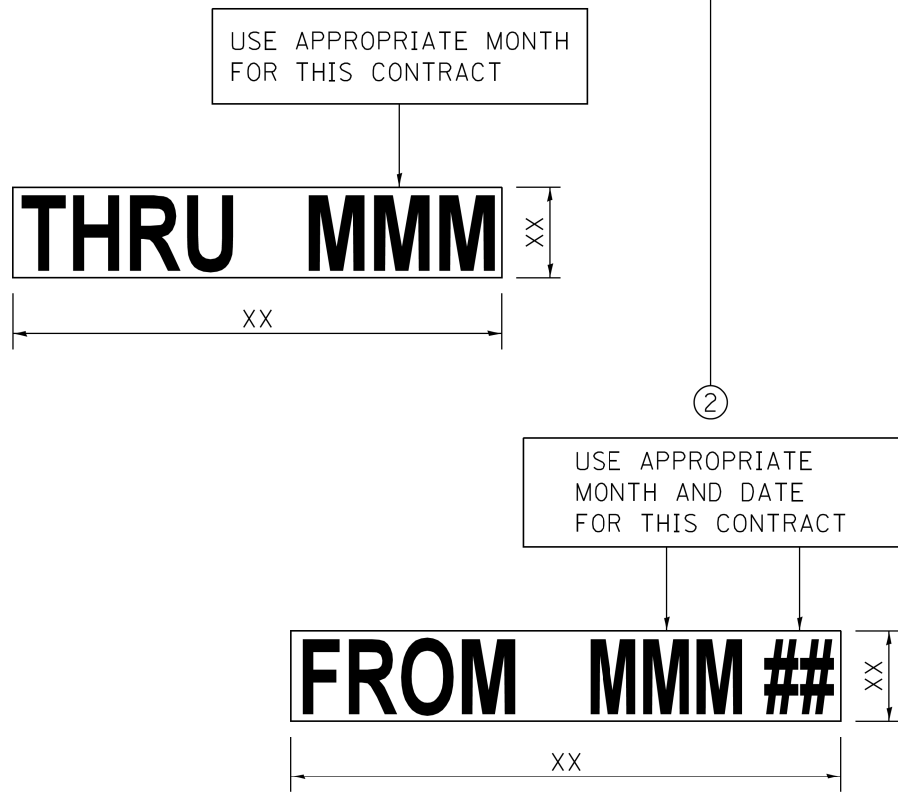
**STATE OF ILLINOIS
DEPARTMENT OF TRANSPORTATION**

CHICAGO AVE. OVER IL. 83 PERFORMED JOINT STRIP SEAL - SIDEWALK S.N. 022-0211		F.A.P. RTE.	SECTION	COUNTY	TOTAL SHEETS	SHEET NO.
		344	2019-061-BR	DUPAGE	17	15
SCALE: SHEET 10 OF 10 SHEETS STA. TO STA.		ILLINOIS FED. AID PROJECT				

CONTRACT NO. 62J38	
---------------------------	--



1. USE BLACK LETTERING ON ORANGE BACKGROUND. ALL LETTERING SHALL BE HIGHWAY C FONT.
2. ERECT SIGN ASSEMBLY (POST MOUNTED) WITH PANELS ② AND ③ IN PLACE ON ROAD TO BE CLOSED IN EACH DIRECTION NEAR POINT OF CLOSURE OR WITHIN SECTION TO BE FULLY CLOSED TWO (2) WEEKS PRIOR TO START DATE OF FULL CLOSURE. REMOVE SIGN AFTER CLOSURE
3. OVERLAY PANEL ② TO CONTAIN STARTING DATE OF FULL CLOSURE AND DETOUR IMPLEMENTATION. (EX. "FROM APR 2")
4. OVERLAY PANEL ③ TO CONTAIN ENDING MONTH OF FULL CLOSURE & DETOUR (EX. "THRU JULY"). OMIT THE DATE ON PANEL ③ ; MONTH ONLY.
5. SEE SPECIAL PROVISION FOR "TEMPORARY INFORMATION SIGNING" FOR ADDITIONAL INFORMATION.
6. ONE SIGN ASSEMBLY EQUALS SQ. FT.
7. SHALL BE PAID FOR AS TEMPORARY INFORMATION SIGNING.



NOTE:
 ERECT SIGN (POST-MOUNTED) WITH PANELS ① AND ② IN PLACE ON ROAD TO BE CLOSED IN EACH DIRECTION NEAR POINT OF CLOSURE OR WITHIN SECTION TO BE FULLY CLOSED TWO (2) WEEKS PRIOR TO START DATE OF FULL CLOSURE. REMOVE ASSEMBLY AFTER CLOSURE.

ARTERIAL ROAD INFORMATION SIGN
 FOR ROADS TO BE FULLY CLOSED
 AND DETOURED

* ALL DIMENSIONS ARE IN INCHES
 UNLESS SHOWN OTHERWISE.

FILE NAME =	USER NAME = lgibgtrnobt	DESIGNED -	REVISED -	STATE OF ILLINOIS DEPARTMENT OF TRANSPORTATION	ARTERIAL ROAD INFORMATION SIGN IL 83 AT CHICAGO AVE. (S.N. 022-0211)	F.A.P. RTE.	SECTION	COUNTY	TOTAL SHEETS	SHEET NO.	
		DRAWN -	REVISED -			344	2019-061-BR	DUPAGE	17	16	
		CHECKED -	REVISED -			CONTRACT NO. 62J38					
		DATE -	REVISED -			ILLINOIS FED. AID PROJECT					
	PLOT SCALE = 100.0000' / 1" =			SCALE:	SHEET	OF	SHEETS	STA.	TO	STA.	

