

049

03-06-2020 LETING ITEM 049

STATE OF ILLINOIS
DEPARTMENT OF TRANSPORTATION

F.A.P. SITE	SECTION	COUNTY	TOTAL SHEETS	SHEET NO.
326	(122BR)BRR	LIVINGSTON	18	1
		ILLINOIS	CONTRACT NO. 66K49	

INDEX OF SHEETS

- 1 COVER SHEET
- 2 GENERAL NOTES & COMMITMENTS
- 3 - 5 SUMMARY OF QUANTITIES
- 6 TYPICAL SECTION
- 7 - 8 TRAFFIC CONTROL AND PROTECTION, STANDARD 701321
- 9 SCHEDULES
- 10 STEEL PLATE BEAM GUARDRAIL DETAILS
- 11 - 17 STRUCTURE NO. 053 0047 REPAIR PLANS
- 18 MISCELLANEOUS DETAILS

STANDARDS

- 000C01-07 STANDARD SYMBOLS, ABBREVIATIONS AND PATTERNS
- 001001-02 AREAS OF REINFORCEMENT BARS
- 001006 DECIMAL OF AN INCH AND OF A FOOT
- 420001-09 PAVEMENT POINTS
- 420401-13 PAVEMENT CONNECTOR (PCC) FOR BRIDGE APPROACH SLAB
- 420701-03 PAVEMENT WELDED WIRE REINFORCEMENT
- 630001-12 STEEL PLATE BEAM GUARDRAIL
- 631031-16 TRAFFIC BARRIER TERMINAL, TYPE 6
- 701001-02 OFF-RD OPERATIONS, 2L, 2W MORE THAN 15' (4.5 m) AWAY
- 701006-05 OFF-RD OPERATIONS 2L, 2W 15' (4.5 m) TO 24' (600 mm) FROM PAVEMENT EDGE
- 701201-05 LANE CLOSURE, 2L, 2W, DAY ONLY, FOR SPEEDS ≥ 45 MPH
- 701206-05 LANE CLOSURE, 2L, 2W, NIGHT ONLY, FOR SPEEDS ≥ 45 MPH
- 701301-04 LANE CLOSURE, 2L, 2W SHORT TIME OPERATIONS
- 701311-03 LANE CLOSURE 2L, 2W MOVING OPERATIONS-DAY ONLY
- 701901-08 TRAFFIC CONTROL DEVICES
- 704001-08 TEMPORARY CONCRETE BARRIER
- 782006-01 GUARDRAIL AND BARRIER WALL REFLECTOR MOUNTING DETAILS

PROPOSED HIGHWAY PLANS

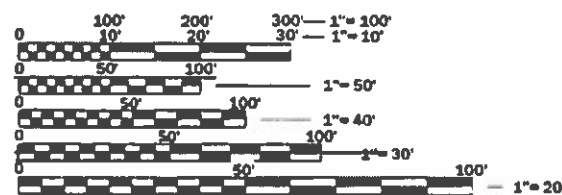
F.A.P. ROUTE 326 (IL 47)
SECTION (122BR)BRR
BRIDGE REPAIRS
LIVINGSTON COUNTY

C-93-021-20



PROJECT LOCATION

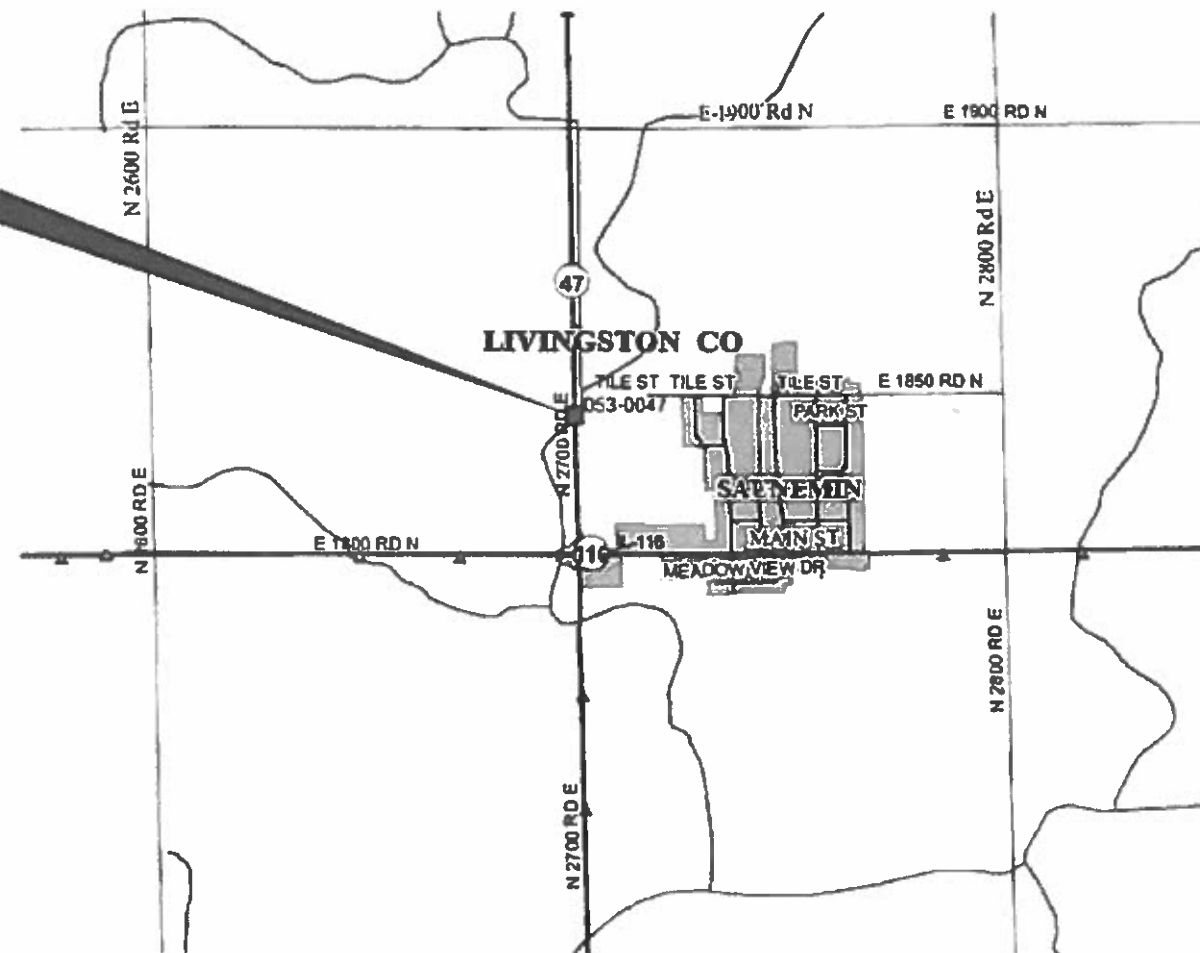
STRUCTURE NO. 053-0047
CARRYING FAP 326 (IL 47)
OVER 5 MILE CREEK APPROXIMATELY
0.30 MI. NORTH OF IL ROUTE 116
(NEAR SAUNEMIN)



FULL SIZE PLANS HAVE BEEN PREPARED USING STANDARD ENGINEERING SCALES. REDUCED SIZED PLANS WILL NOT CONFORM TO STANDARD SCALES. IN MAKING MEASUREMENTS ON REDUCED PLANS, THE ABOVE SCALES MAY BE USED.

J.U.L.I.E.
JOINT UTILITY LOCATION INFORMATION FOR EXCAVATION
1-800-892-0123
OR 811

PROJECT ENGINEER: JOE KANNEL P.E.
UNIT CHIEF: RON WOODSHANK
DISTRICT 3 NO. (815) 434-6131
CONTRACT NO. 66K49



GROSS LENGTH = 248 FT. = 0.05 MILE
NET LENGTH = 248 FT. = 0.05 MILE

FUNCTIONAL CLASSIFICATION

RURAL
F.A.P. ROUTE 326 (IL 47)
2017 ADT = 2450
P.V. 64.3% S.U. 4.1% M.U. 31.6%

STATE OF ILLINOIS
DEPARTMENT OF TRANSPORTATION

SUBMITTED *Dec 17, 2019*

[Signature]
REGIONAL ENGINEER

[Signature]
ENGINEER OF DESIGN AND ENVIRONMENT

[Signature]
DIRECTOR OF HIGHWAYS PROJECT IMPLEMENTATION

PRINTED BY THE AUTHORITY
OF THE STATE OF ILLINOIS

CODE NO.	ITEM	UNIT	TOTAL QUANTITY	CONSTRUCTION CODE
				CONTRACT MAINTENANCE
				100% STATE
				BRIDGE
				0047
				053-0047
20200100	EARTH EXCAVATION	CU YD	78	78
31101200	SUBBASE GRANULAR MATERIAL, TYPE B 4"	SQ YD	178	178
42000060	WELDED WIRE REINFORCEMENT	SQ YD	238	238
42000080	PAVEMENT CONNECTOR (PCC) FOR BRIDGE APPROACH SLAB	SQ YD	238	238
44000100	PAVEMENT REMOVAL	SQ YD	161	161
44004250	PAVED SHOULDER REMOVAL	SQ YD	104	104
44213204	TIE BARS 3/4"	EACH	48	48
50102400	CONCRETE REMOVAL	CU YD	12.4	12.4
50300225	CONCRETE STRUCTURES	CU YD	29.8	29.8
50300255	CONCRETE SUPERSTRUCTURE	CU YD	12.4	12.4
50300260	BRIDGE DECK GROOVING	SQ YD	497	497
50300300	PROTECTIVE COAT	SQ YD	504	504
50301350	CONCRETE SUPERSTRUCTURE (APPROACH SLAB)	CU YD	124	124
50800205	REINFORCEMENT BARS, EPOXY COATED	POUND	37934	37934
50800515	BAR SPLICERS	EACH	252	252
52000110	PREFORMED JOINT STRIP SEAL	FOOT	96	96

MODEL: Default
 FILE: Mainfile: pw\p\barcom.dwg
 ILLINOIS.gov:PW\DOT\Documents\DOT_Offices\District_3\Projects\0366K49\CADD\data\0366K49-cover.dgn

USER NAME = MARINIEJ	DESIGNED - RW	REVISED -
	DRAWN - RW	REVISED -
PLOT SCALE = 3.9370' / mm	CHECKED - EM	REVISED -
PLOT DATE = 11/7/2019	DATE - 8/28/2019	REVISED -

**STATE OF ILLINOIS
DEPARTMENT OF TRANSPORTATION**

SUMMARY OF QUANTITIES

SCALE: SHEET 1 OF 3 SHEETS STA. TO STA.

F.A.P. RTE.	SECTION	COUNTY	TOTAL SHEETS	SHEET NO.
326	(122BR)BRR	LIVINGSTON	18	3
			CONTRACT NO. 66K49	
ILLINOIS FED. AID PROJECT				

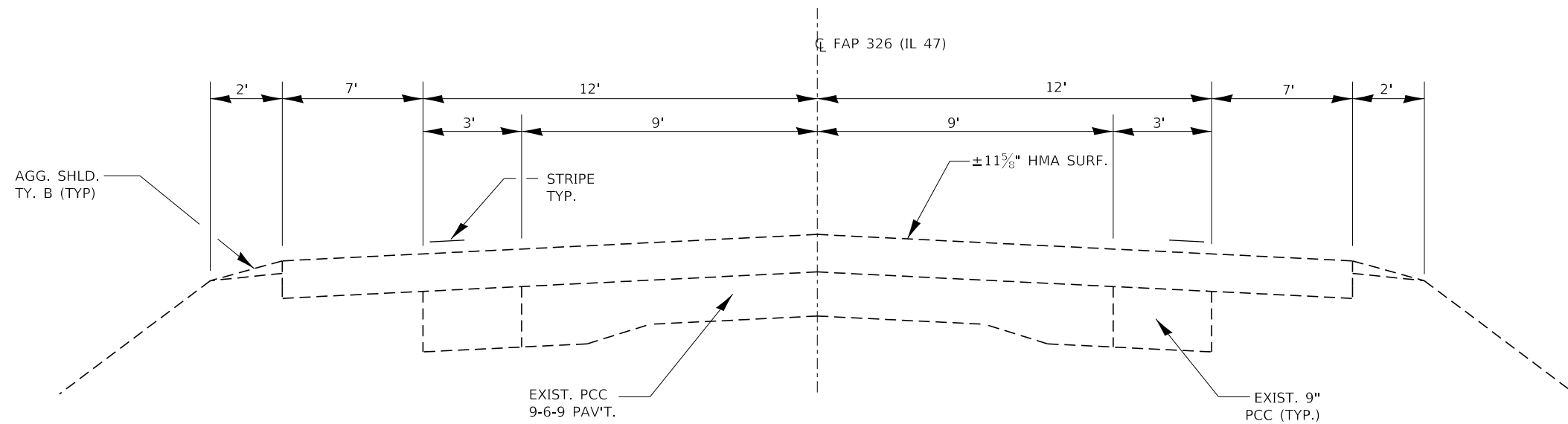
CODE NO.	ITEM	UNIT	TOTAL QUANTITY	CONSTRUCTION CODE	
				CONTRACT MAINTENANCE	
				100% STATE	
				BRIDGE	
		0047		053-0047	
* 78008230	POLYUREA PAVEMENT MARKING TYPE I - LINE 6"	FOOT	184		184
* 78200005	GUARDRAIL REFLECTORS, TYPE A	EACH	8		8
* X0327809	LINEAR DELINEATOR PANELS, 4 INCH	EACH	4		4
X0327980	PAVEMENT MARKING REMOVAL - WATER BLASTING	SQ FT	404		404
X2700001	TEMPORARY RUMBLE STRIPS (SPECIAL)	EACH	18		18
Z0001495	BRIDGE APPROACH SHOULDER REMOVAL	SQ YD	34		34
Z0004552	APPROACH SLAB REMOVAL	SQ YD	170		170
Z0016200	DECK SLAB REPAIR (PARTIAL)	SQ YD	38		38
Ø Z0076600	TRAINEES	HOUR	1000		1000
Z0030850	TEMPORARY INFORMATION SIGNING	SQ FT	42		42

*= SPECIALTY ITEM

Ø 0042

MODEL: Default
FILE: h:\mhc\p\pub\harcour\mhc\p\pub\DOT\Documents\DOT - Offices\Dir\ctc 3\Project\0366K49\CADD\0366K49-cover.dgn

USER NAME = MARINIEJ	DESIGNED - RW	REVISED -	STATE OF ILLINOIS DEPARTMENT OF TRANSPORTATION	SUMMARY OF QUANTITIES			F.A.P. RTE.	SECTION	COUNTY	TOTAL SHEETS	SHEET NO.
DRAWN - RW	REVISIED -	326					(122BR)BRR	LIVINGSTON	18	5	
PLOT SCALE = 3.9370' / mm	CHECKED - EM	REVISIED -		SCALE: SHEET 3 OF 3 SHEETS STA. TO STA.			CONTRACT NO. 66K49				
PLOT DATE = 12/17/2019	DATE - 8/28/2019	REVISIED -		ILLINOIS FED. AID PROJECT							



TYPICAL SECTION
FAP 326 (IL 47)

MODEL: Default
 FILE: h:\mfc_p\pub\harcourt\dot\illinois\pwr\pww\DOT\Documents\DOT_Offices\Dir\dot 3\Project\326\K49\CADD\326\K49-cover.dgn

USER NAME = MARINIEJ	DESIGNED - RW	REVISED -
	DRAWN - RW	REVISED -
PLOT SCALE = 3.9370' / mm	CHECKED - EM	REVISED -
PLOT DATE = 11/8/2019	DATE - 8/28/2019	REVISED -

STATE OF ILLINOIS
DEPARTMENT OF TRANSPORTATION

TYPICAL SECTIONS	
SCALE:	SHEET 1 OF 1 SHEETS STA. TO STA.

F.A.P. RTE.	SECTION	COUNTY	TOTAL SHEETS	SHEET NO.
326	(122BR)BRR	LIVINGSTON	18	6
CONTRACT NO. 66K49				
ILLINOIS FED. AID PROJECT				

**SCHEDULE - TRAFFIC CONTROL
STRUCTURE NO. 053-0047**

LOCATION	TRAFFIC CONTROL AND PROTECTION, STANDARD 701321	TEMPORARY BRIDGE TRAFFIC SIGNALS	TEMPORARY RUMBLE STRIPS (SPECIAL)	TEMPORARY CONCRETE BARRIER	RELOCATE TEMPORARY CONCRETE BARRIER	IMPACT ATTENUATORS TEMPORARY (NON-REDIRECTIVE) TEST LEVEL 3	IMPACT ATTENUATORS RELOCATE (NON-REDIRECTIVE) TEST LEVEL 3	TEMPORARY INFORMATION SIGNING
	EACH	EACH	EACH	FOOT	FOOT	EACH	EACH	SQ FT
STAGE I	1	1	6	475		2		42
STAGE II					475		2	
TOTAL	1	1	6	475	475	2	2	42

**SCHEDULE - PAVEMENT MARKING
STRUCTURE NO. 053-0047**

LOCATION	PAVEMENT MARKING REMOVAL WATER BLASTING	POLYUREA PAVEMENT MARKING TYPE 1 LINE 4"	POLYUREA PAVEMENT MARKING TYPE 1 LINE 6"
	SQ FT	FOOT	FOOT
STAGE I	251		
STAGE II	153	928	184
TOTAL	404	928	184

**SCHEDULE - PAVEMENT
STRUCTURE NO. 053-0047**

LOCATION	PAVEMENT REMOVAL
	SQ YD
NORTH APPROACH	81
SOUTH APPROACH	80
TOTAL	161

**SCHEDULE - GUARDRAIL
STRUCTURE NO. 053-0047**

LOCATION	GUARDRAIL REMOVAL	STEEL PLATE BEAM GUARDRAIL, TYPE A	TRAFFIC BARRIER TERMINAL TYPE 6	TRAFFIC BARRIER TERMINAL TYPE 1 (SPECIAL) TANGENT	GUARDRAIL REFLECTORS, TYPE A	LINEAR DELINEATOR PANELS, 4 INCH
	FOOT	FOOT	EACH	EACH	EACH	EACH
SE QUAD	220	75	1	1	2	1
NE QUAD	170	12.5	1	1	2	1
SW QUAD	170	12.5	1	1	2	1
NW QUAD	220	75	1	1	2	1
TOTAL	780	175	4	4	8	4

**SCHEDULE - PAVEMENT
STRUCTURE NO. 053-0047**

LOCATION	PAVED SHOULDER REMOVAL
	SQ YD
NE CORNER	18
SE CORNER	34
NW CORNER	34
SW CORNER	18
TOTAL	104

**SCHEDULE - SUBBASE GRANULAR MATERIAL, TYPE B 4"
STRUCTURE NO. 053-0047**

LOCATION	SUBBASE GRANULAR MATERIAL, TYPE B 4"
	CU YD
NORTH APPROACH	89
SOUTH APPROACH	89
TOTAL	178

**SCHEDULE - EXCAVATION
STRUCTURE NO. 053-0047**

LOCATION	EARTH EXCAVATION
	CU YD
NORTH APPROACH	39
SOUTH APPROACH	39
TOTAL	78

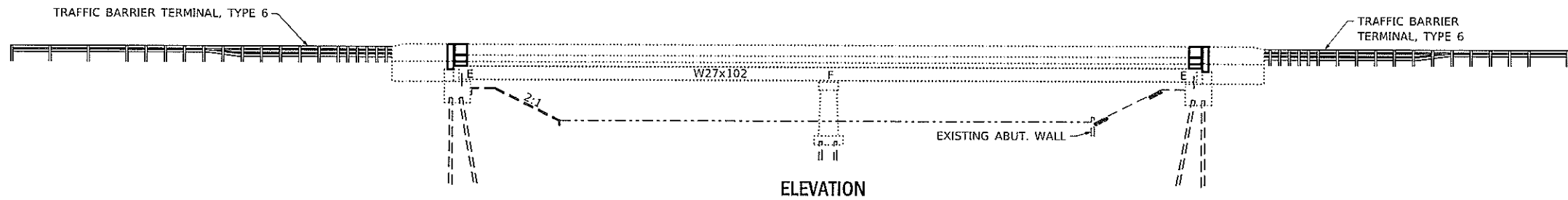
MODEL: Default
FILE: \\nas01c:\pub\planroom\dat\illinois\pwr\DOT\Documents\DOT_Offices\Bartlett_3\Projects\0366K49\CADD\0366K49-cover.dgn

USER NAME = MARINIEJ	DESIGNED - RW	REVISED -
	DRAWN - RW	REVISED -
PLOT SCALE = 3.9370' / mm	CHECKED - EM	REVISED -
PLOT DATE = 11/20/2019	DATE - 8/28/2019	REVISED -

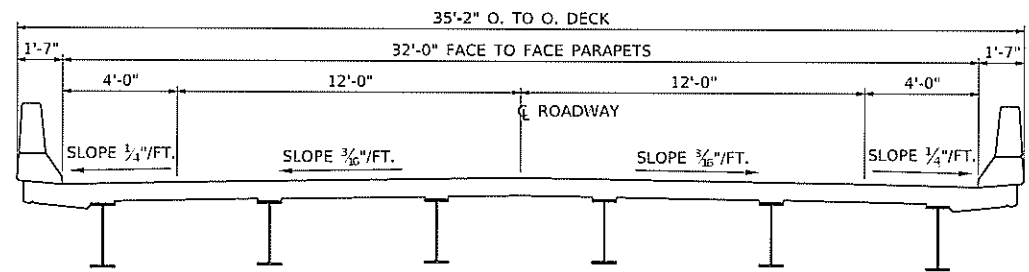
**STATE OF ILLINOIS
DEPARTMENT OF TRANSPORTATION**

SCHEDULES STRUCTURE NO. 053-0047			
SCALE:	SHEET 1	OF 1 SHEETS	STA. TO STA.

F.A.P. RTE.	SECTION	COUNTY	TOTAL SHEETS	SHEET NO.
326	(122BR)BRR	LIVINGSTON	18	9
			CONTRACT NO. 66K49	
		ILLINOIS	FED. AID PROJECT	



ELEVATION



CROSS SECTION
LOOKING SOUTH

TOTAL BILL OF MATERIAL
STRUCTURE NO. 053-0047

ITEM	UNIT	SUPER	SUB	TOTAL
BRIDGE APPROACH SHOULDER REMOVAL	SQ. YD.	34		34
APPROACH SLAB REMOVAL	SQ. YD.	170		170
WELDED WIRE REINFORCEMENT	SQ. YD.	238		238
PAVEMENT CONNECTOR (PCC) FOR BRIDGE APPROACH SLAB	SQ. YD.	238		238
BRIDGE DECK GROOVING	SQ. YD.	497		497
CONCRETE SUPERSTRUCTURE (APPROACH SLAB)	CU. YD.	124		124
CONCRETE REMOVAL	CU. YD.	12.4		12.4
CONCRETE SUPERSTRUCTURE	CU. YD.	12.4		12.4
REINFORCEMENT BARS EPOXY COATED	POUND	37934		37934
PROTECTIVE COAT	SQ. YD.	504		504
PREFORMED JOINT STRIP SEAL	FOOT	96		96
DECK SLAB REPAIR (PARTIAL)	SQ. YD.	38		38
BAR SPLICERS	EACH	252		252
TIE BARS 3/4"	EACH	48		48
CONCRETE STRUCTURES	CU. YD.	29.8		29.8

GENERAL NOTES

PLAN DIMENSIONS AND DETAILS RELATIVE TO EXISTING PLANS ARE SUBJECT TO NOMINAL CONSTRUCTION VARIATIONS. THE CONTRACTOR SHALL FIELD VERIFY EXISTING DIMENSIONS AND DETAILS AFFECTING NEW CONSTRUCTION AND MAKE NECESSARY APPROVED ADJUSTMENTS PRIOR TO CONSTRUCTION OR ORDERING OF MATERIALS. SUCH VARIATIONS SHALL NOT BE CAUSE FOR ADDITIONAL COMPENSATION FOR A CHANGE IN SCOPE OF WORK; HOWEVER, THE CONTRACTOR WILL BE PAID FOR THE QUANTITY ACTUALLY FURNISHED AT THE UNIT PRICE BID FOR THE WORK.

NO FIELD WELDING IS PERMITTED EXCEPT AS SPECIFIED IN THE CONTRACT DOCUMENTS.

REINFORCEMENT BARS DESIGNATED (E) SHALL BE EPOXY COATED.

PRIOR TO POURING THE NEW CONCRETE DECK, ALL HEAVY OR LOOSE RUST, LOOSE MILL SCALE, AND OTHER LOOSE OR POTENTIALLY DETRIMENTAL FOREIGN MATERIAL SHALL BE REMOVED FROM THE SURFACES IN CONTACT WITH CONCRETE. TIGHTLY ADHERED PAINT MAY REMAIN UNLESS OTHERWISE NOTED. REMOVAL SHALL BE ACCOMPLISHED BY METHODS THAT WILL NOT DAMAGE THE STEEL AND THE COST WILL BE INCLUDED IN THE PAY ITEM COVERING REMOVAL OF THE EXISTING CONCRETE.

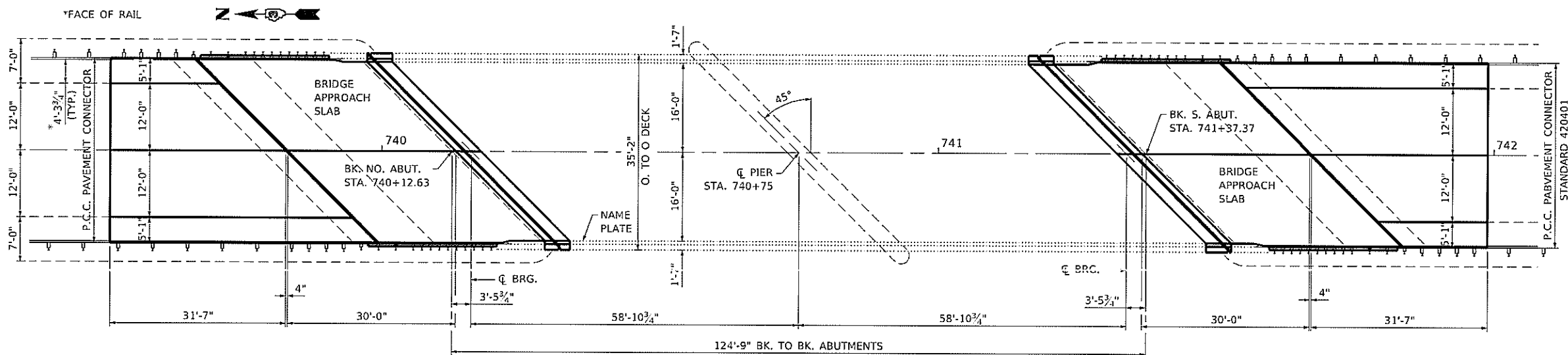
PROTECTIVE COAT SHALL BE APPLIED TO ALL NEW CONCRETE SURFACES

EXISTING REINFORCEMENT BARS EXTENDING INTO THE REMOVAL AREA SHALL BE CLEANED, STRAIGHTENED AND INCORPORATED INTO THE NEW CONSTRUCTION. ANY REINFORCEMENT BARS THAT ARE DAMAGED DURING CONCRETE REMOVAL SHALL BE REPLACED WITH AN APPROVED BAR SPLICER OR ANCHORAGE SYSTEM. COST INCLUDED WITH CONCRETE REMOVAL.

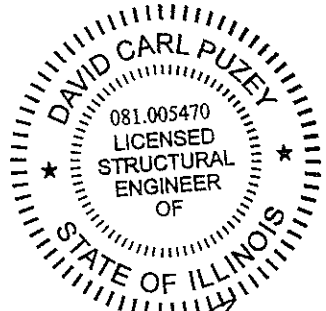
AS DIRECTED BY THE ENGINEER, EXISTING CONSTRUCTION ACCESSORIES WELDED TO THE TOP FLANGE OF BEAMS AND GIRDERS SHALL BE REMOVED. THE WELD AREAS SHALL BE GROUND FLUSH AND INSPECTED FOR CRACKS USING MAGNETIC PARTICLE TESTING (MT) OR DYE PENETRANT TESTING (PT) BY QUALIFIED PERSONNEL APPROVED BY THE ENGINEER. ANY CRACKS THAT CANNOT BE REMOVED BY GRINDING 1/4" DEEP SHALL BE IDENTIFIED AND REPORTED TO THE BUREAU OF BRIDGES AND STRUCTURES FOR FURTHER DISPOSITION. THE COST OF REMOVING WELDED ACCESSORIES, GRINDING AND INSPECTING WELD AREAS AND GRINDING CRACKS WILL BE PAID FOR ACCORDING TO ARTICLE 109.04 OF THE STANDARD SPECIFICATIONS.

JOINT OPENING SHALL BE ADJUSTED ACCORDING TO ARTICLE 520.04 OF THE STANDARD SPECIFICATIONS WHEN THE DECK IS POURED AT AN AMBIENT TEMPERATURE OTHER THAN 50 DEGREES F.

ALL TIE BARS SHOWN ON PLAN DETAILS SHALL BE EPOXY COATED



PLAN
STRUCTURE NO. 053-0047



David Carl Puzey 1/28/2020
Expires 11/30/2020

MODEL Detail
FILE NAME: p:\hahnem dm\lincs\rev\1001\document\1101\01\cadd\053-0047\053-0047.dgn

USER NAME = woodsharkrl	DESIGNED - RW	REVISED -
	DRAWN - RW	REVISED -
PLOT SCALE = 100.0000' / in.	CHECKED - EM	REVISED -
PLOT DATE = 1/28/2020	DATE - 8/28/2019	REVISED -

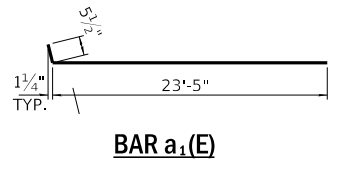
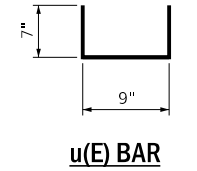
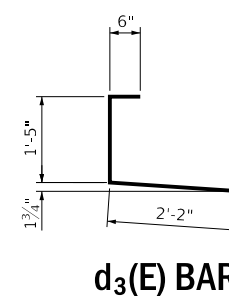
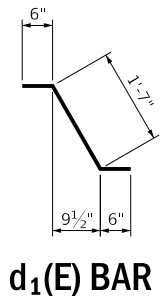
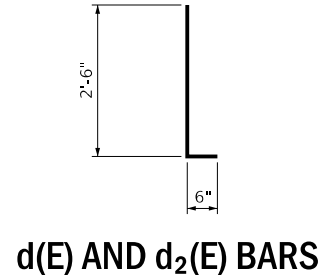
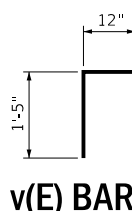
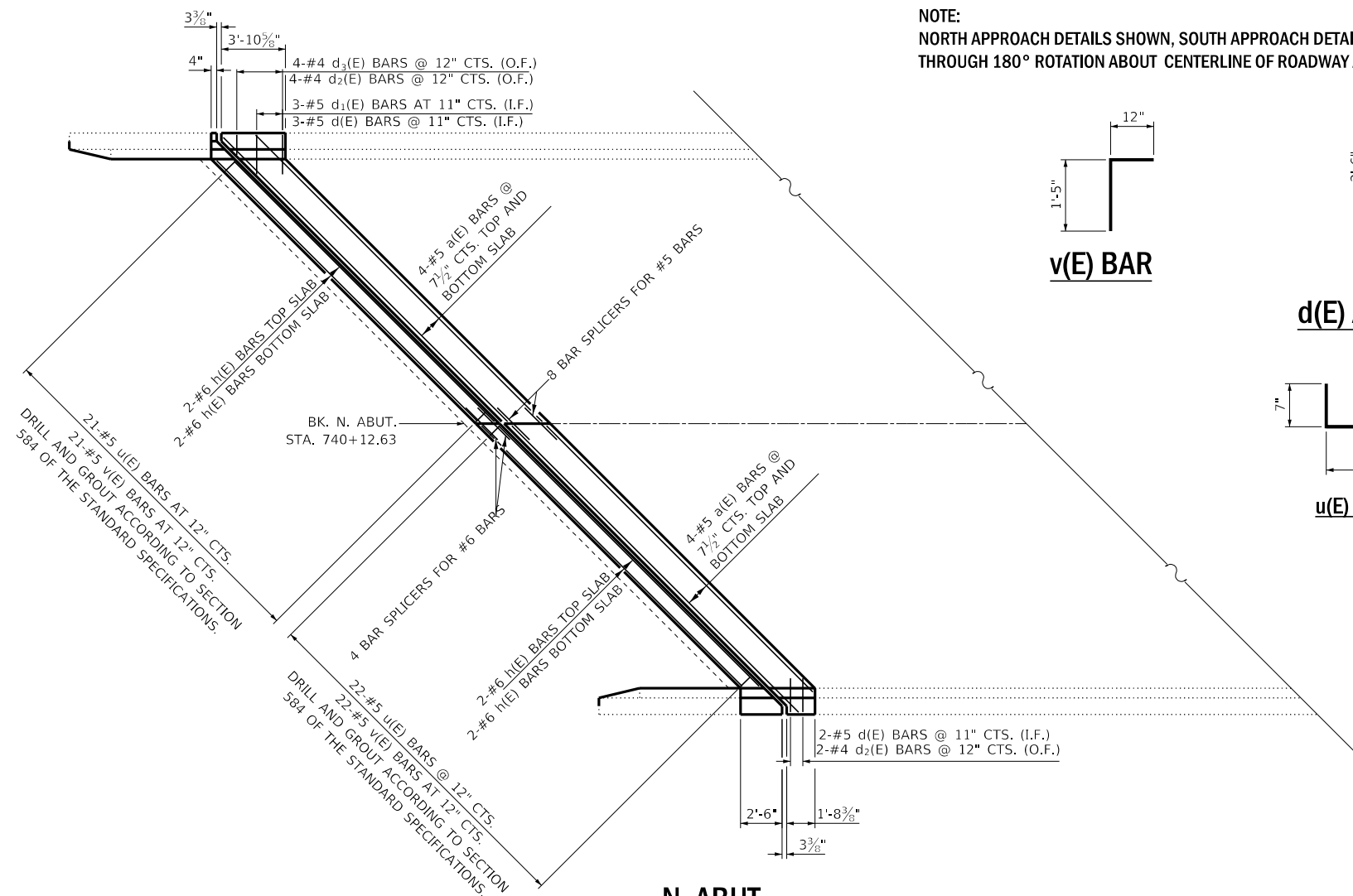
STATE OF ILLINOIS
DEPARTMENT OF TRANSPORTATION

GENERAL PLAN AND ELEVATION
STRUCTURE NO. 053-0047

SCALE: SHEET 1 OF 7 SHEETS STA. TO STA.

F.A.P. RTE.	SECTION	COUNTY	TOTAL SHEETS	SHEET NO.
326	(122BR)BRR	LIVINGSTON	18	11
ILLINOIS FED. AID PROJECT			CONTRACT NO. 66K49	

NOTE:
 NORTH APPROACH DETAILS SHOWN, SOUTH APPROACH DETAILS SIMILAR
 THROUGH 180° ROTATION ABOUT CENTERLINE OF ROADWAY AT BK. OF ABUT.

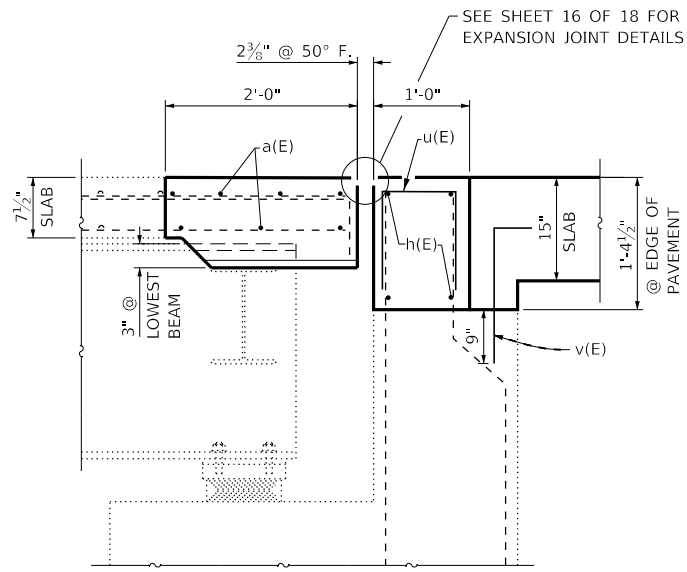


BILL OF MATERIAL
STRUCTURE NO. 053-0047

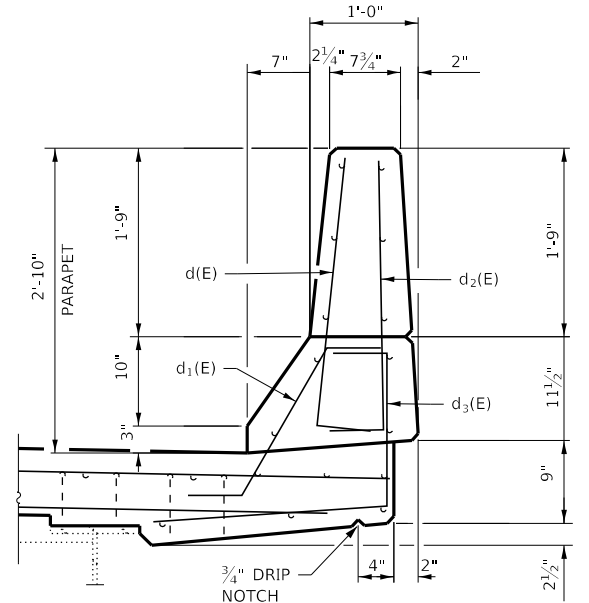
BAR	NO.	SIZE	LENGTH	SHAPE
a(E)	28	#5	24' - 4"	—
a1(E)	128	#5	23' - 10"	└─┘
a2(E)	168	#8	23' - 10"	—
b(E)	104	#5	29' - 8"	—
b1(E)	164	#9	29' - 8"	—
b2(E)	2	#4	22' - 0"	—
b3(E)	2	#4	20' - 4"	—
d(E)	12	#5	3' - 0"	└─┘
d1(E)	10	#5	2' - 7"	└─┘
d2(E)	12	#4	3' - 0"	└─┘
d3(E)	10	#4	4' - 1"	└─┘
h(E)	16	#6	22' - 3"	—
t(E)	144	#4	13' - 9"	—
u(E)	86	#5	1' - 11"	└─┘
v(E)	86	#5	2' - 5"	└─┘
w(E)	80	#5	23' - 10"	—

BRIDGE APPROACH SHOULDER REMOVAL	SQ. YD.	34
APPROACH SLAB REMOVAL	SQ. YD.	170
WELDED WIRE REINFORCEMENT	SQ. YD.	238
PAVEMENT CONNECTOR (PCC) FOR BRIDGE APPROACH SLAB	SQ. YD.	238
BRIDGE DECK GROOVING	SQ. YD.	497
CONCRETE SUPERSTRUCTURE (APPROACH SLAB)	CU. YD.	124
CONCRETE SUPERSTRUCTURE	CU. YD.	12.4
REINFORCEMENT BARS EPOXY COATED	POUND	37934
PROTECTIVE COAT	SQ. YD.	504
TIE BARS 3/4"	EACH	48
CONCRETE STRUCTURES	CU. YD.	29.8

N. ABUT.



SECTION D-D
 @ RT. 4'S



CURB SECTION
AT EXPANSION JOINT

MODEL: Default
 FILE: Abutment_ExpansionJoint.dwg
 PROJECT: I:\Projects\053\0047\0530047.dwg
 USER: grunstadaj
 DATE: 8/28/2019
 SCALE: 1/8" = 1'-0"
 SHEET: 4 OF 7

USER NAME	DESIGNED	REVISION
grunstadaj	RW	-
	RW	-
	EM	-
		-

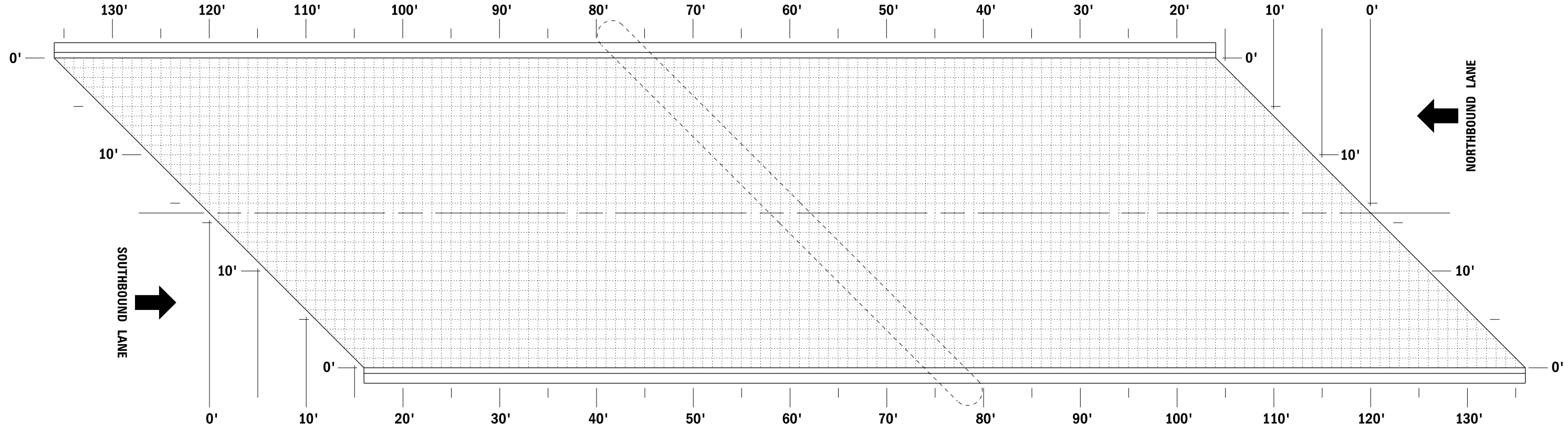
STATE OF ILLINOIS
DEPARTMENT OF TRANSPORTATION

CONCRETE SUPERSTRUCTURE DETAILS
STRUCTURE NO. 053-0047

SCALE: SHEET 4 OF 7 SHEETS STA. TO STA.

F.A.P. RTE.	SECTION	COUNTY	TOTAL SHEETS	SHEET NO.
326	(122BR)BR	LIVINGSTON	18	14

CONTRACT NO. 66K49
 ILLINOIS FED. AID PROJECT



**"AS-BUILT" DECK SLAB REPAIR
FOR STRUCTURE NO. 053-0047**

NOTE

THE QUANTITY FOR DECK SLAB REPAIR (38 SQ YD) IS ESTIMATED. THE ENGINEER SHALL SOUND THE ENTIRE DECK AREA PRIOR TO BEGINNING DECK SLAB REPAIR OPERATIONS AND RECORD ACTUAL LOCATIONS AND QUANTITIES ON THIS SHEET.

MODEL: Default
FILE: \\nas0101.pw.state.il.us\pub\baronm.d\at\illinois.gov\PWIDOT\Documents\DOT_Offices\District_3\Projects\0366K49\CADD\0366K49-cover.dgn

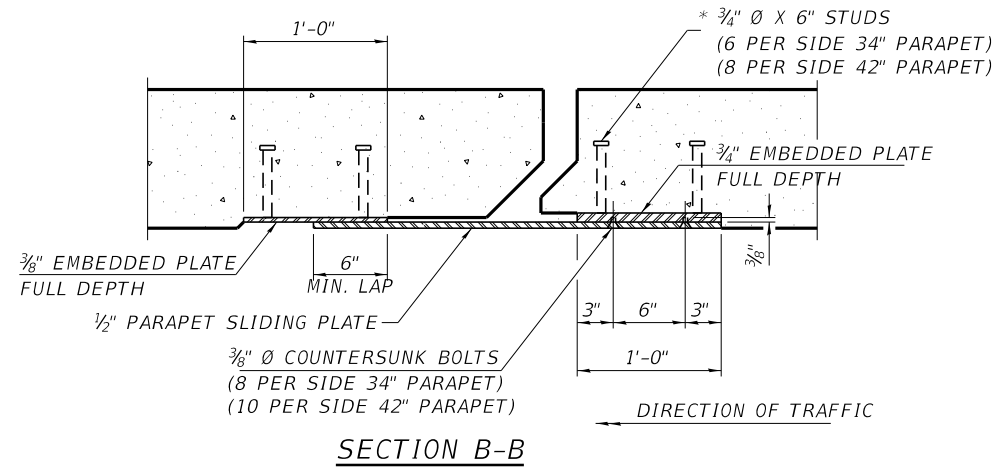
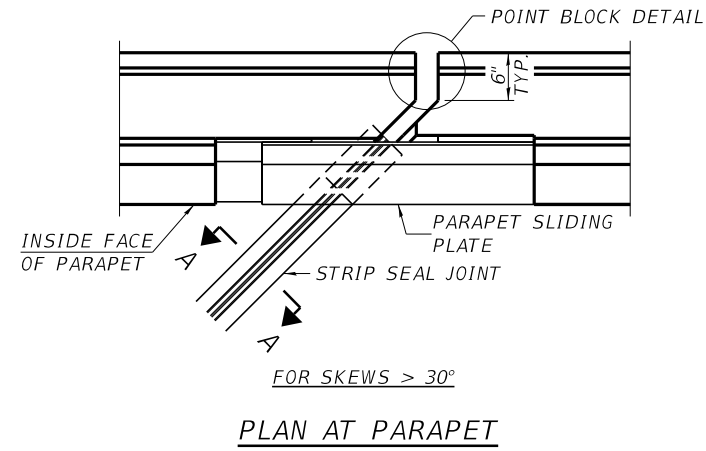
USER NAME = MARINIEJ	DESIGNED - RW	REVISED -
	DRAWN - RW	REVISED -
PLOT SCALE = 3.9370' / mm	CHECKED - EM	REVISED -
PLOT DATE = 10/29/2019	DATE - 8/28/2019	REVISED -

**STATE OF ILLINOIS
DEPARTMENT OF TRANSPORTATION**

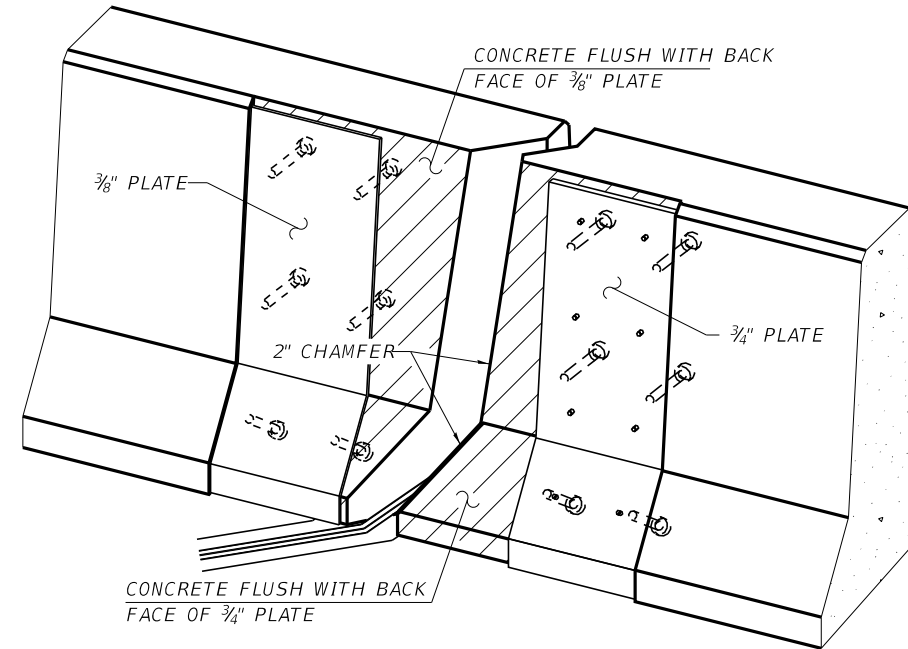
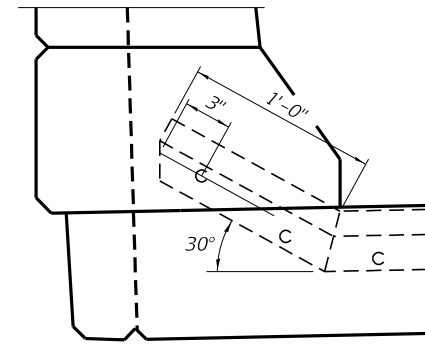
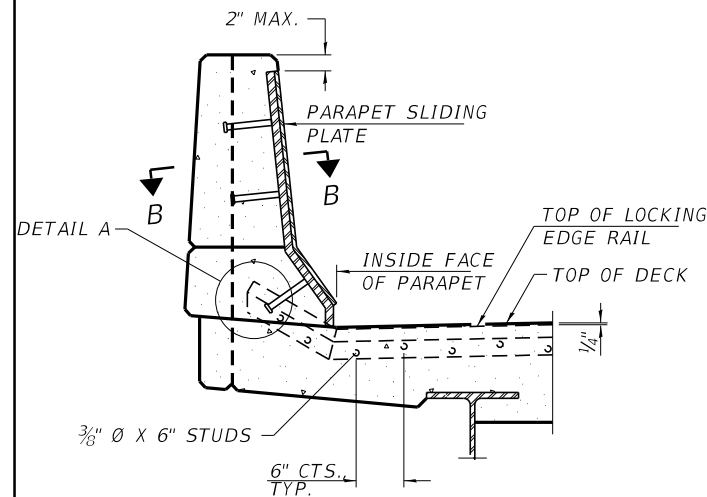
**"AS-BUILT" DECK SLAB REPAIR
STRUCTURE NO. 053-0047**

SCALE: SHEET 5 OF 7 SHEETS STA. TO STA.

F.A.P. RTE.	SECTION	COUNTY	TOTAL SHEETS	SHEET NO.
326	(122BR)BRR	LIVINGSTON	18	15
			CONTRACT NO. 66K49	
ILLINOIS FED. AID PROJECT				



NOTES:
 THE STRIP SEAL SHALL BE MADE CONTINUOUS AND SHALL HAVE A MINIMUM THICKNESS OF 1/4". THE CONFIGURATION OF THE STRIP SEAL SHALL MATCH THE CONFIGURATION OF THE LOCKING EDGE RAILS. OPEN OR "WEBBED" STRIP SEAL GLAND CONFIGURATIONS ARE NOT PERMITTED. THE GLAND SHALL BE SIZED FOR A MAXIMUM RATED MOVEMENT OF 4 INCHES.
 THE LOCKING EDGE RAILS DEPICTED ARE CONFIGURED FOR TYPICAL APPLICATIONS AND ARE CONCEPTUAL ONLY. THE ACTUAL CONFIGURATION OF THE LOCKING EDGE RAILS AND MATCHING STRIP SEAL MAY VARY FROM MANUFACTURER TO MANUFACTURER PROVIDED THEY FIT THE APPLICATION AND MEET THE MINIMUM ANCHORAGE SHOWN. FLANGED EDGE RAILS, HOWEVER, WILL NOT BE ALLOWED. LOCKING EDGE RAILS MAY EXCEED THE 4 1/2" MAXIMUM DEPTH PROVIDED THE ANCHORAGE SYSTEM IS REVISED ACCORDING TO THE MANUFACTURER'S RECOMMENDATION.
 THE MANUFACTURER'S RECOMMENDED INSTALLATION METHODS SHALL BE FOLLOWED.
 ALL STEEL COMPONENTS SHALL BE GALVANIZED AFTER FABRICATION ACCORDING TO ARTICLE 520.03 OF THE STANDARD SPECIFICATIONS.
 THE MAXIMUM SPACE BETWEEN LOCKING EDGE RAIL SEGMENTS SHALL BE 1/16" AND SEALED WITH A SUITABLE SEALANT; HOWEVER, ANY RAIL JOINT WITHIN 10' MEASURED PERPENDICULAR TO THE FACE OF THE CURB OR PARAPET SHALL BE WELDED AS SHOWN IN THE LOCKING EDGE RAIL SPLICE DETAIL.
 COST OF PARAPET SLIDING PLATES, EMBEDDED PLATES, AND ANCHORAGE STUDS INCLUDED WITH PREFORMED JOINT STRIP SEAL.
 34" F-SHAPE BARRIER SHOWN, 42" F-SHAPE SIMILAR AS NOTED.
 THE CONCRETE OPENING BELOW THE STRIP SEAL WILL VARY BASED ON THE LOCKING EDGE RAIL CHOSEN BY THE CONTRACTOR. DECK AND PARAPET LENGTHS SHOWN ELSEWHERE IN THE PLANS ARE DIMENSIONED TO THE CONCRETE OPENING, NOT THE JOINT OPENING, AND ARE BASED ON THE ROLLED LOCKING EDGE RAIL. IF THE CONTRACTOR ELECTS TO USE A DIFFERENT LOCKING EDGE RAIL, DIMENSIONAL ADJUSTMENTS MAY BE REQUIRED. ONE EXCEPTION TO THIS WOULD BE THE STRIP SEAL JOINT AT THE END OF THE PRECAST BRIDGE APPROACH SLAB. FOR THESE CASES THE PAVEMENT CONNECTOR LENGTH SHALL BE ADJUSTED, NOT THE LENGTH OF THE BRIDGE APPROACH SLAB.



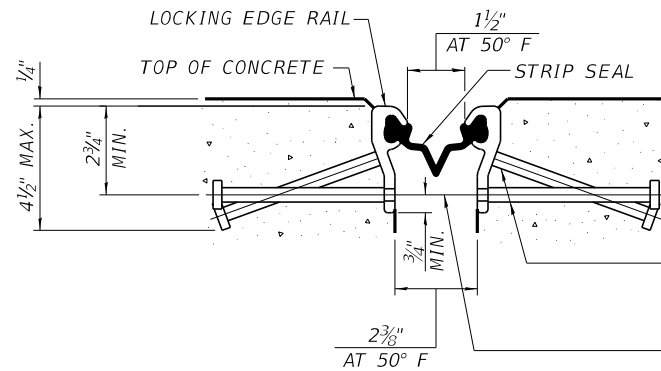
**BILL OF MATERIAL
 STRUCTURE NO. 053-0047**

ITEM	UNIT	TOTAL
PREFORMED JOINT STRIP SEAL	FOOT	96

ELEVATION AT PARAPET
 (SKEWS > 30° SHOWN. SKEWS ≤ 30° SIMILAR EXCEPT AS SHOWN IN PLAN VIEW.)

DETAIL A

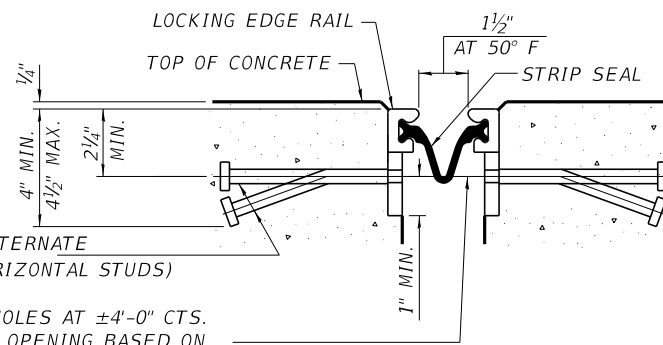
TRIMETRIC VIEW
 (SHOWING EMBEDDED PLATES ONLY)



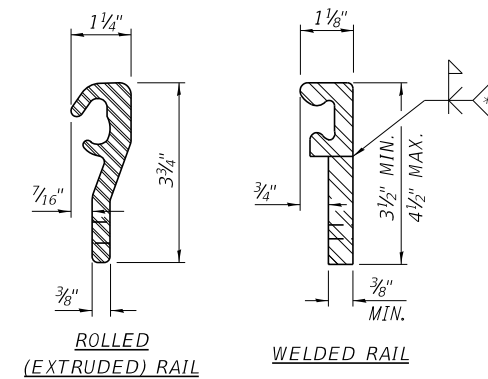
* 5/8" Ø X 6" STUDS @ 6" CTS. (ALTERNATE ANGLED/BENT STUDS WITH HORIZONTAL STUDS)
 3/8" Ø THREADED RODS IN 7/16" Ø HOLES AT ±4"-0" CTS. FOR HOLDING THE PROPER JOINT OPENING BASED ON THE TEMPERATURE DURING THE DECK POUR. PLACE TO MISS STUDS. ALL RODS SHALL BE BURNED, OR SAWED OFF FLUSH WITH THE PLATES AFTER CONCRETE IS SET.

SECTION A-A

* GRANULAR OR SOLID FLUX FILLED HEADED STUDS CONFORMING TO ARTICLE 1006.32 OF THE STD. SPECS., AUTOMATICALLY END WELDED.

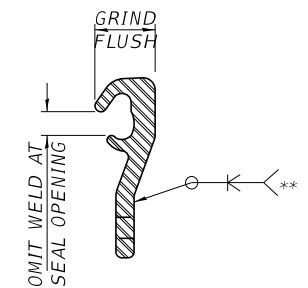


SHOWING WELDED RAIL JOINT



LOCKING EDGE RAILS

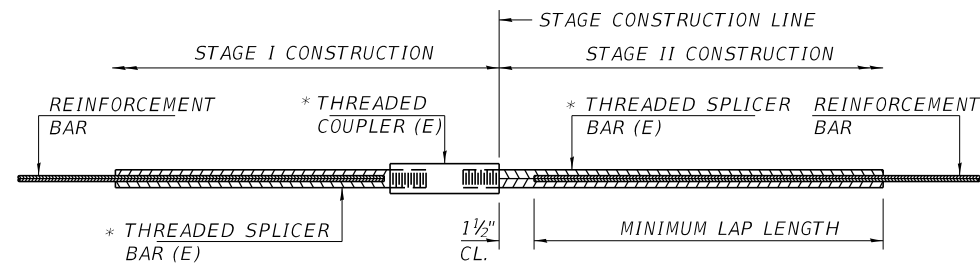
** BACK GOUGE NOT REQUIRED IF COMPLETE JOINT PENETRATION IS VERIFIED BY MOCK-UP.



LOCKING EDGE RAIL SPLICE

THE INSIDE OF THE LOCKING EDGE RAIL GROOVE SHALL BE FREE OF WELD RESIDUE. ROLLED RAIL SHOWN, WELDED RAIL SIMILAR.

EJ-SS 8-11-17



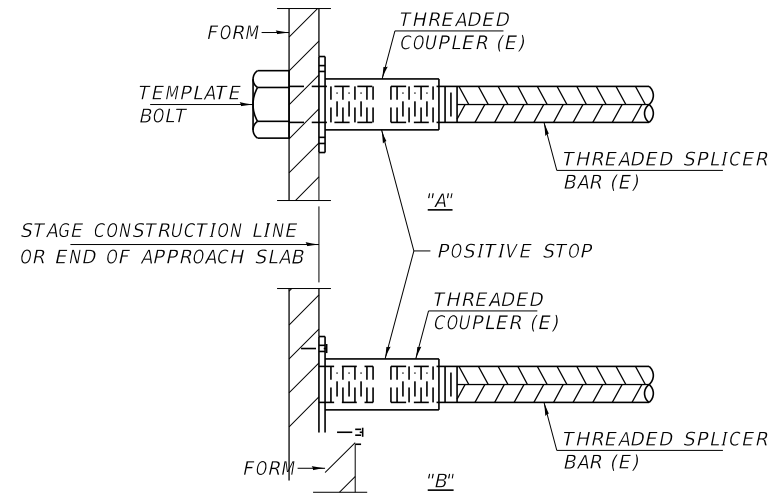
STANDARD BAR SPLICER ASSEMBLY

THREADED SPLICER BAR LENGTH = MIN. LAP LENGTH + 1 1/2" + THREAD LENGTH

* EPOXY NOT REQUIRED ON BAR SPLICER ASSEMBLY COMPONENTS USED IN CONJUNCTION WITH BLACK BARS.

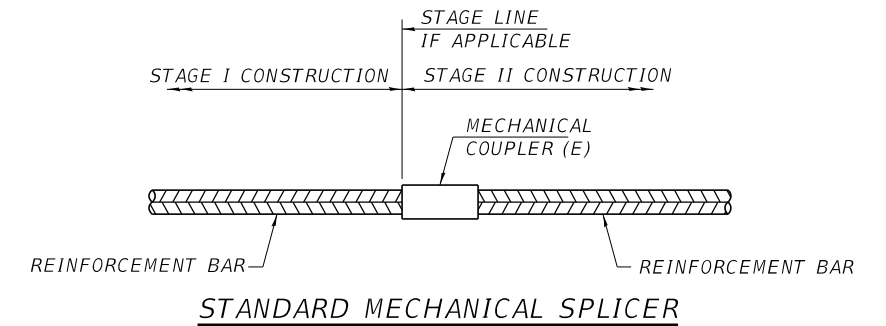
**BILL OF MATERIAL
STRUCTURE NO. 053-0047**

LOCATION	BAR SIZE	NO. ASSEMBLIES REQUIRED	MINIMUM LAP LENGTH
N. DECK	#5	8	3'-0"
S. DECK	#5	8	3'-0"
N. HATCHBLOCK	#6	4	4'-0"
S. HATCHBLOCK	#6	4	4'-0"
N. APPR. SLAB-TOP	#5	32	3'-4"
N. APPR. SLAB BOTTOM	#8	42	5'-4"
N. APPR. FOOTING	#5	40	3'-0"
S. APPR. SLAB-TOP	#5	32	3'-4"
S. APPR. SLAB BOTTOM	#8	42	5'-4"
S. APPR. FOOTING	#5	40	3'-0"

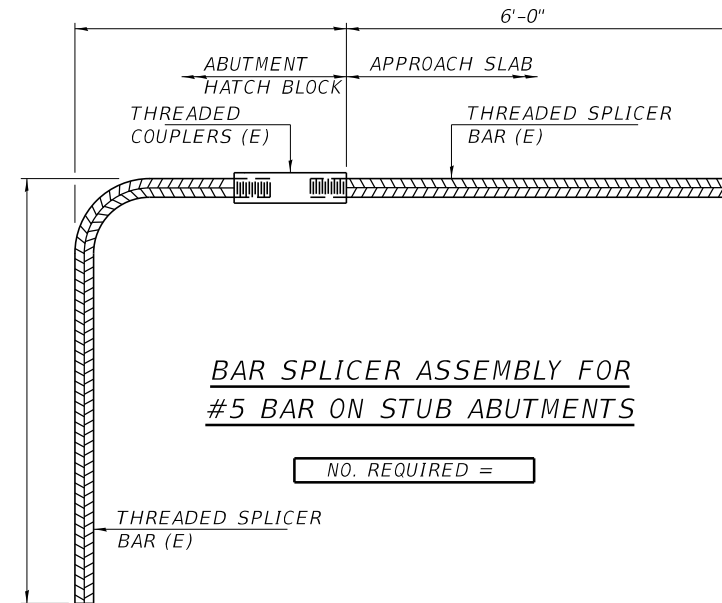


INSTALLATION AND SETTING METHODS

"A" : SET BAR SPLICER ASSEMBLY BY MEANS OF A TEMPLATE BOLT.
 "B" : SET BAR SPLICER ASSEMBLY BY NAILING TO WOOD FORMS OR CEMENTING TO STEEL FORMS.
 (E) : INDICATES EPOXY COATING.



Location	Bar size	No. assemblies required



**BAR SPLICER ASSEMBLY FOR
#5 BAR ON STUB ABUTMENTS**

NO. REQUIRED =

NOTES

SPLICER BARS SHALL BE DEFORMED WITH THREADED ENDS AND HAVE A MINIMUM 60 KSI YIELD STRENGTH.
 ALL REINFORCEMENT SHALL BE LAPPED AND TIED TO THE SPLICER BARS.
 BAR SPLICER ASSEMBLIES SHALL BE EPOXY COATED ACCORDING TO THE REQUIREMENTS FOR REINFORCEMENT BARS. SEE SECTION 508 OF THE STANDARD SPECIFICATIONS.
 SEE APPROVED LIST OF BAR SPLICER ASSEMBLIES AND MECHANICAL SPLICERS FOR ALTERNATIVES.

BSD-1

2-17-2017

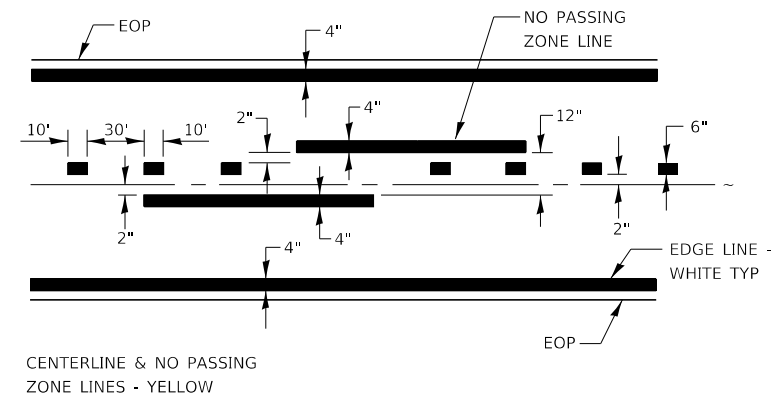
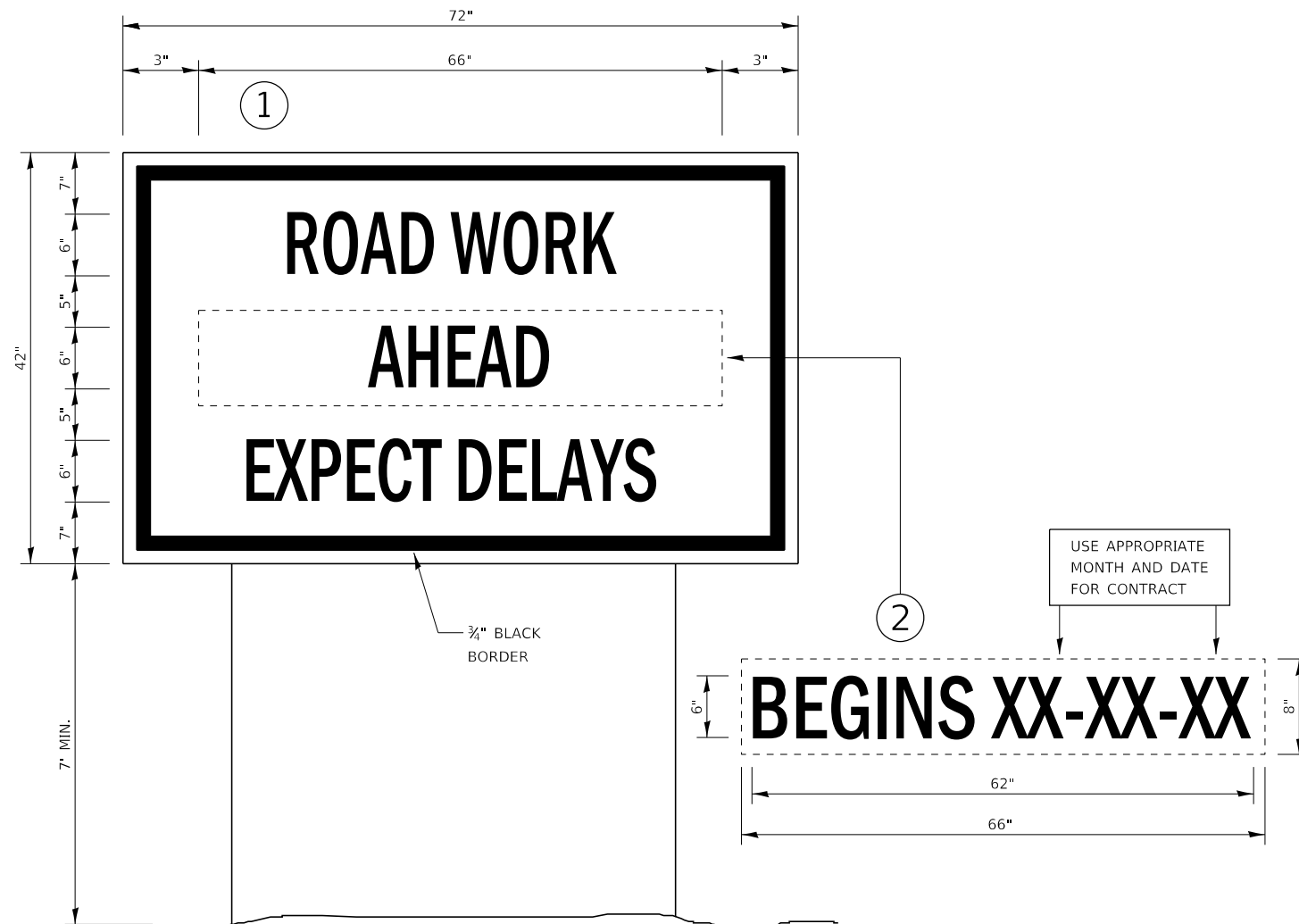
FILE NAME =	USER NAME = woodshank1	DESIGNED - EM	REVISED -
p:\planroom\dot\illinois\gov\PWDOT\Documents\IDOT	Files\District 3\Projects\0366K49\CADData\0366K49-cover.dwg	DRAWN - EM	REVISED -
Default	PLOT SCALE = 100.0000' / in.	CHECKED - RW	REVISED -
	PLOT DATE = 1/28/2020	DATE - 7/23/2019	REVISED -

**STATE OF ILLINOIS
DEPARTMENT OF TRANSPORTATION**

**BAR SPLICER ASSEMBLY AND MECHANICAL SPLICER DETAILS
FOR STRUCTURE NO. 053-0047**

SCALE: SHEET 7 OF 7 SHEETS STA. TO STA.

F.A.P. RTE.	SECTION	COUNTY	TOTAL SHEETS	SHEET NO.
326	(122BR)BRR	LIVINGSTON	18	17
ILLINOIS FED. AID PROJECT			CONTRACT NO. 66K49	

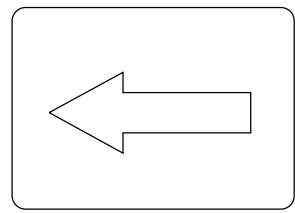


PAVEMENT MARKING

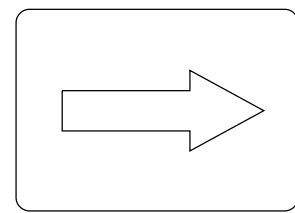
TEMPORARY INFORMATION SIGNING

NOTES:

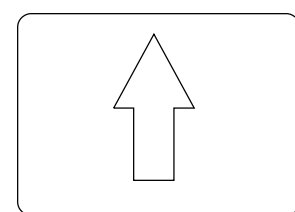
1. USE 6" D BLACK LETTERING ON FLUORESCENT ORANGE BACKGROUND.
2. ERECT SIGNS AT LOCATIONS IN ADVANCE OF THE "ROAD CONSTRUCTION AHEAD" SIGNS AS DIRECTED BY THE ENGINEER.
3. ERECT SIGN ① WITH INSTALLED PANEL ② A MINIMUM OF ONE WEEK PRIOR TO THE START OF THE LANE CLOSURE.
4. REMOVE PANEL ② ON THAT DATE.
5. SEE SPECIAL PROVISION "TEMPORARY INFORMATION SIGNING" FOR ADDITIONAL INFORMATION.
6. WILL BE PAID FOR PER SQ FT AS "TEMPORARY INFORMATION SIGNING". EACH SIGN = 21 SQ FT AND THE DATE PANEL ② WILL NOT BE MEASURED SEPARATELY FOR PAYMENT.



M6-1 21"X15"
BLACK ON FLUORESCENT ORANGE

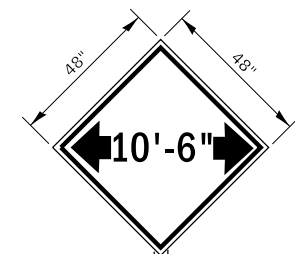


M6-1 21"X15"
BLACK ON FLUORESCENT ORANGE

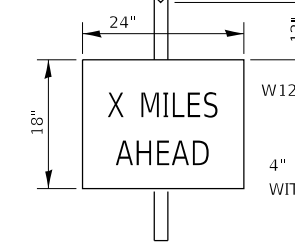
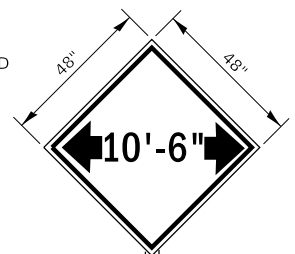


M6-3 21"X15"
BLACK ON FLUORESCENT ORANGE

DIRECTIONAL ARROWS



12" D BLACK LETTERING WITH ORANGE BACKGROUND



W12-I 101 (O)

4" D BLACK LETTERING WITH ORANGE BACKGROUND

TO BE POST MOUNTED AS SHOWN ELSEWHERE IN THE PLANS.

COST OF SUPPLYING, INSTALLING, MAINTAINING AND REMOVING WIDTH RESTRICTION SIGNS SHALL BE INCLUDED IN THE COST OF THE TRAFFIC CONTROL AND PROTECTION PAY ITEMS.

WIDTH RESTRICTION SIGNING DETAILS

FILE NAME =	USER NAME = MARINEJ	DESIGNED - EM	REVISED -	STATE OF ILLINOIS DEPARTMENT OF TRANSPORTATION	MISCELLANEOUS DETAILS			F.A.P. RTE.	SECTION	COUNTY	TOTAL SHEETS	SHEET NO.
pw:\planroom\dot\illinois\gov\PWIDOT\Documents\DOT\Office\District 3\Projects\D366K49\CADData\I366K49-cover.dwg	DRAWN - EM	REVISD -	REVISD -					326	(122BR)BRR	LIVINGSTON	18	18
Default	PLOT SCALE = 3.8370' / mm	CHECKED - RW	REVISD -		SCALE: SHEET 1 OF 1 SHEETS STA. TO STA.			CONTRACT NO. 66K49				
	PLOT DATE = 11/21/2019	DATE - 7/23/2019	REVISD -					ILLINOIS FED. AID PROJECT				