

085

03-06-2020 LETTING ITEM 085

STATE OF ILLINOIS
DEPARTMENT OF TRANSPORTATION

F.A.P. SITE	SECTION	COUNTY	TOTAL SHEETS	SHEET NO.
828	13RS-4	EFFINGHAM	10	1
		ILLINOIS	CONTRACT NO.: 74924	

D-97-042-19



FOR INDEX OF SHEETS, SEE SHEET NO. 2

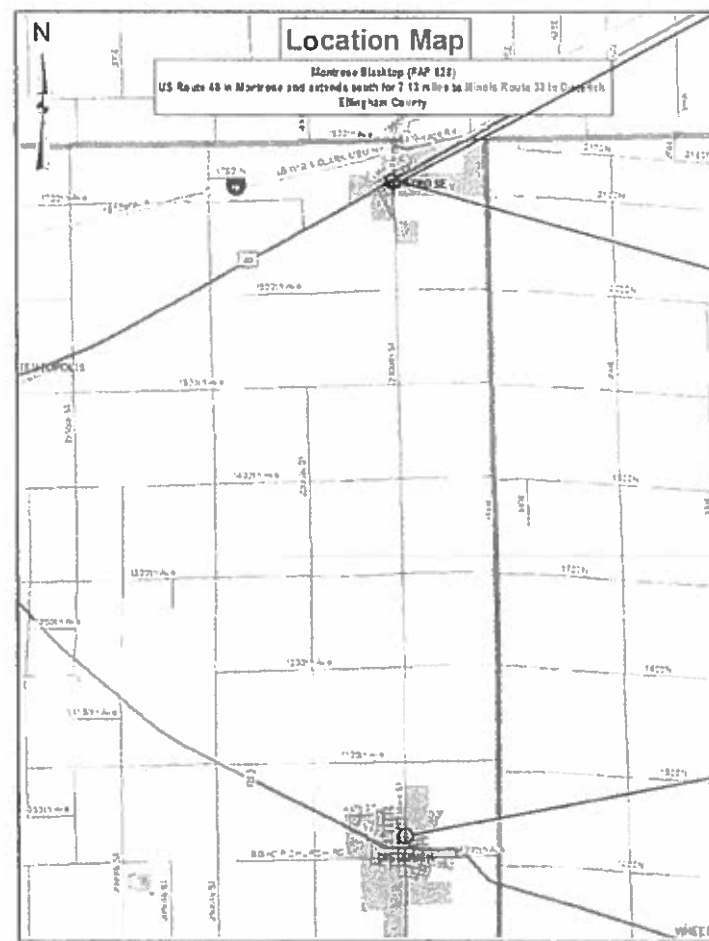
OMISSIONS: RAILROAD CROSSING

STATION 1+78 TO 2+34

PROPOSED HIGHWAY PLANS

F.A.P. ROUTE 828 (MONTROSE BLACKTOP)
SECTION 13RS-4
PROJECT STP-79VA (217)
3P RESURFACING
EFFINGHAM COUNTY

C-97-086-19

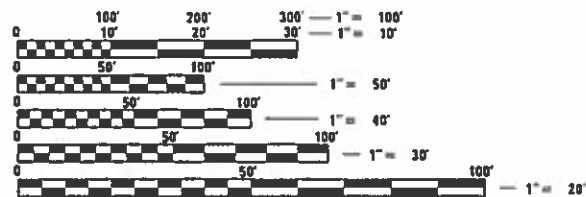


PROJECT BEGINS
STATION 0+13

PAVING OMISSION
STA. 1+78 TO STA. 2+34

PROJECT ENDS
STATION 375+24

ADT = 2100 (2018)



FULL SIZE PLANS HAVE BEEN PREPARED USING STANDARD ENGINEERING SCALES. REDUCED SIZED PLANS WILL NOT CONFORM TO STANDARD SCALES. IN MAKING MEASUREMENTS ON REDUCED PLANS, THE ABOVE SCALES MAY BE USED.

J.U.L.I.E.
JOINT UTILITY LOCATION INFORMATION FOR EXCAVATORS
1-800-892-0123
OR 811

PROJECT ENGINEER: TOM ROMAN
PROJECT MANAGER: TOM ROMAN
PHONE NUMBER: (217) 342-8320
CONTRACT NO. 74924

GROSS LENGTH = 37,511.2 FT. = 7.104 MILE
NET LENGTH = 37,455.2 FT. = 7.094 MILE

STATE OF ILLINOIS
DEPARTMENT OF TRANSPORTATION

SUBMITTED DECEMBER 10 2019

Jeffrey P. Meyer
REGIONAL ENGINEER

Jan 31 2020
S. A. ETK

Jan 31 2020
DIRECTOR OF DESIGN AND ENVIRONMENT

Jan 31 2020
DIRECTOR OF HIGHWAYS PROJECT IMPLEMENTATION

PRINTED BY THE AUTHORITY
OF THE STATE OF ILLINOIS

80% FED
20% STATE

80% FED
20% STATE

SUMMARY OF QUANTITIES			TOTAL QUANTITIES	CONSTRUCTION TYPE CODE		
CODE NO	ITEM	UNIT		0005		
40200800	AGGREGATE SURFACE COURSE, TYPE B	TON	283	283		
40600290	BITUMINOUS MATERIALS (TACK COAT)	POUND	67580	67580		
40600982	HOT-MIX ASPHALT SURFACE REMOVAL - BUTT JOINT	SQ YD	266	266		
40600990	TEMPORARY RAMP	SQ YD	186	186		
40602970	HOT-MIX ASPHALT BINDER COURSE, IL-9.5FG, N70	TON	9818	9818		
40604052	HOT-MIX ASPHALT SURFACE COURSE, IL-9.5, MIX "C", N70	TON	11220	11220		
40800050	INCIDENTAL HOT-MIX ASPHALT SURFACING	TON	101	101		
44000161	HOT-MIX ASPHALT SURFACE REMOVAL, 3"	SQ YD	99235	99235		
44000164	HOT-MIX ASPHALT SURFACE REMOVAL, 3 3/4"	SQ YD	710	710		
44200140	PAVEMENT PATCHING, TYPE I, 12 INCH	SQ YD	32	32		
44200144	PAVEMENT PATCHING, TYPE II, 12 INCH	SQ YD	2127	2127		
44200148	PAVEMENT PATCHING, TYPE III, 12 INCH	SQ YD	617	617		
44200150	PAVEMENT PATCHING, TYPE IV, 12 INCH	SQ YD	2640	2640		

SUMMARY OF QUANTITIES			TOTAL QUANTITIES	CONSTRUCTION TYPE CODE		
CODE NO	ITEM	UNIT		0005		
48102100	AGGREGATE WEDGE SHOULDER, TYPE B	TON	4663	4663		
67000400	ENGINEER'S FIELD OFFICE, TYPE A	CAL MO	5	5		
67000600	ENGINEER'S FIELD LABORATORY	CAL MO	5	5		
67100100	MOBILIZATION	L SUM	1	1		
70100450	TRAFFIC CONTROL AND PROTECTION, STANDARD 701201	L SUM	1	1		
70100460	TRAFFIC CONTROL AND PROTECTION, STANDARD 701306	L SUM	1	1		
70107025	CHANGEABLE MESSAGE SIGN	CAL DA	28	28		
70300100	SHORT TERM PAVEMENT MARKING	FOOT	11237	11237		
70300150	SHORT TERM PAVEMENT MARKING REMOVAL	SO FT	1236	1236		
70300210	TEMPORARY PAVEMENT MARKING LETTERS AND SYMBOLS	SO FT	14.4	14.4		
70300220	TEMPORARY PAVEMENT MARKING - LINE 4"	FOOT	84309	84309		
70300270	TEMPORARY PAVEMENT MARKING - LINE 16"	FOOT	86	86		

MODEL: Default
 FILE: Model_Plan_PlanRoom.dwg
 PROJECT: 74924\CADData\CAD\Drawings\DOT Office\Drawings\74924\PlanRoom.dwg

USER NAME = steffenmk	DESIGNED -	REVISED -
PLOT SCALE = 100.0000' / in.	DRAWN -	REVISED -
PLOT DATE = 12/12/2019	CHECKED -	REVISED -
	DATE -	REVISED -

**STATE OF ILLINOIS
DEPARTMENT OF TRANSPORTATION**

SUMMARY OF QUANTITIES

SCALE: SHEET 1 OF 2 SHEETS STA. TO STA.

F.A.P. RTE. 828	SECTION 13R5-4	COUNTY EFFINGHAM	TOTAL SHEETS 16	SHEET NO. 3
				CONTRACT NO. 74924
		ILLINOIS	FED. AID PROJECT	

80% FED
20% STATE

80% FED
20% STATE

SUMMARY OF QUANTITIES			TOTAL QUANTITIES	CONSTRUCTION TYPE CODE		
CODE NO	ITEM	UNIT		0005		
70300280	TEMPORARY PAVEMENT MARKING - LINE 24"	FOOT	40	40		
* 78000100	THERMOPLASTIC PAVEMENT MARKING - LETTERS AND SYMBOLS	SQ FT	14.4	14.4		
* 78000200	THERMOPLASTIC PAVEMENT MARKING - LINE 4"	FOOT	2097	2097		
* 78000610	THERMOPLASTIC PAVEMENT MARKING - LINE 16"	FOOT	86	86		
* 78000650	THERMOPLASTIC PAVEMENT MARKING - LINE 24"	FOOT	40	40		
* 78001110	PAINT PAVEMENT MARKING - LINE 4"	FOOT	81735	81735		
X0326440	SURFACE REMOVAL, VARIABLE DEPTH (SPECIAL)	SQ YD	1201	1201		
X0327980	PAVEMENT MARKING REMOVAL - WATER BLASTING	SQ FT	1058	1058		
X4060995	TEMPORARY RAMP, SPECIAL	SQ YD	360	360		
* X7830060	GROOVING FOR RECESSED PAVEMENT MARKING, LETTERS AND SYMBOLS	SQ FT	14.4	14.4		
* X7830070	GROOVING FOR RECESSED PAVEMENT MARKING 5"	FOOT	2097	2097		
* X7830084	GROOVING FOR RECESSED PAVEMENT MARKING 19"	FOOT	86	86		
* X7830090	GROOVING FOR RECESSED PAVEMENT MARKING 25"	FOOT	40	40		

SUMMARY OF QUANTITIES			TOTAL QUANTITIES	CONSTRUCTION TYPE CODE		
CODE NO	ITEM	UNIT		0005		
Z0033700	LONGITUDINAL JOINT SEALANT	FOOT	37455	37455		
Z0048665	RAILROAD PROTECTIVE LIABILITY INSURANCE	L SUM	1	1		
Z0049799	PROTECTING OR RESETTING SURVEY MARKERS	EACH	4	4		
Z0070202	SURVEY MARKER VAULT	EACH	4	4		

* SPECIALTY ITEM

MODEL: Default
 FILE: Model_Plan\pub\barroom.dwg
 PROJECT: 7492\ACADD\barroom.dwg
 USER: steffenmk
 DATE: 12/12/2019

USER NAME = steffenmk	DESIGNED -	REVISED -
PLOT SCALE = 100.0000' / in.	DRAWN -	REVISIED -
PLOT DATE = 12/12/2019	CHECKED -	REVISIED -
	DATE -	REVISIED -

STATE OF ILLINOIS
DEPARTMENT OF TRANSPORTATION

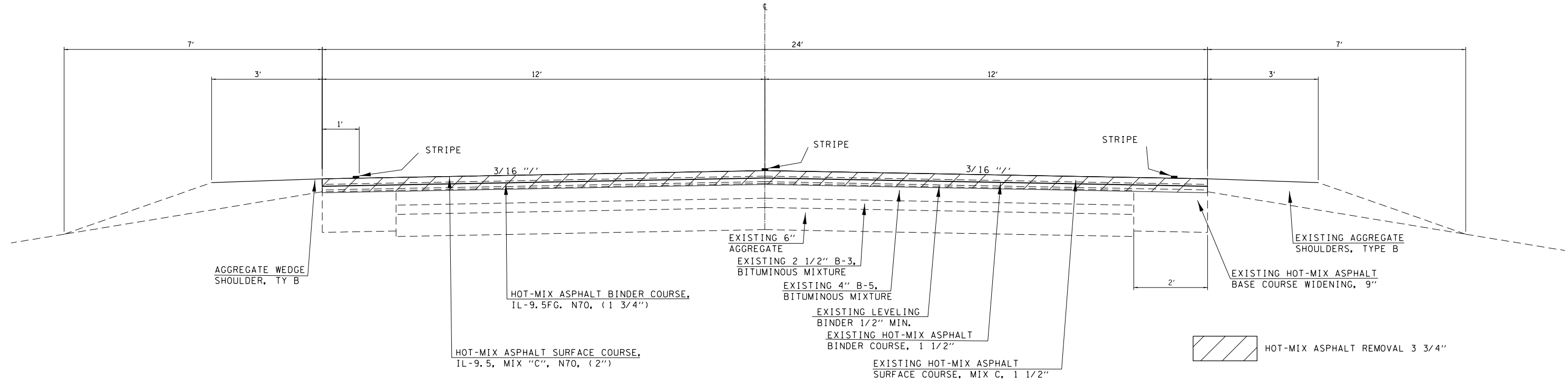
SUMMARY OF QUANTITIES

SCALE: SHEET 2 OF 2 SHEETS STA. TO STA.

F.A.P. RTE. 828	SECTION 13R5-4	COUNTY EFFINGHAM	TOTAL SHEETS 16	SHEET NO. 4
CONTRACT NO. 74924			ILLINOIS FED. AID PROJECT	

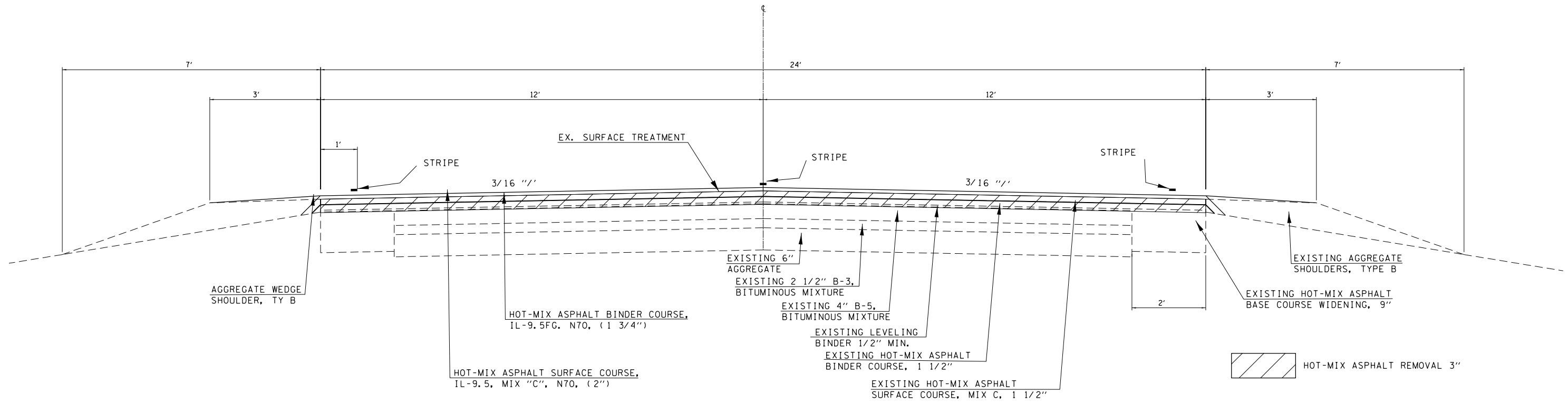
TYPICAL CROSS SECTION

STATION 0+13 TO STATION 1+78
RR OMISSION; STATION 1+78 TO STATION 2+34



TYPICAL CROSS SECTION

STATION 2+34 TO STATION 375+24



NOTE: NOT DRAWN TO SCALE

MODEL: Default
 FILE: Model - 20190108.dwg
 PROJECT: 74924
 SHEET: 1 OF 16
 DATE: 12/12/2019

USER NAME = steffemk	DESIGNED -	REVISED -
PLOT SCALE = 100.0000' / in.	DRAWN -	REVISED -
PLOT DATE = 12/12/2019	CHECKED -	REVISED -
	DATE -	REVISED -

**STATE OF ILLINOIS
DEPARTMENT OF TRANSPORTATION**

TYPICAL SECTIONS			
SCALE:	SHEET 1	OF 1 SHEETS	STA. TO STA.

F.A.P. RTE.	SECTION	COUNTY	TOTAL SHEETS	SHEET NO.
828	13R5-4	EFFINGHAM	16	5
CONTRACT NO. 74924				
ILLINOIS FED. AID PROJECT				

SURVEY MONUMENT SCHEDULE

STATION	POINT NO.	NORTHING	EASTING	OFFSET FEET	TYPE OF POINT	TIE POINTS	DESCRIPTION	PROTECTING OR RESETTING SURVEY MARKERS	SURVEY MARKER VAULTS
								EACH	EACH
23+37	100	858198.490	970773.640	0	PI/ROW SHEETS	NO	3/4" IP FOUND @ CENTERLINE, 12" BELOW ROAD SURFACE		1
36+50	101	860931.156	970834.363	13.5 FT RT	SEC COR/MON. RECORDS	YES	5/8" IP FOUND BENT 6" BELOW AGG SHOULDER. (EAST 1/4 COR. SEC 11, T8N, R7E)	1	
195+28	102	863607.394	970876.787	4.5 FT LT	SEC COR/ROW SHEETS	NO	MAG SPIKE FOUND IN N.B. LANE, 4.5' LEFT OF CL. (EAST 1/4 COR. SEC 26, T8N, R7E)	1	1
274+65	103	866283.783	970919.208	11.5 FT LT	SEC COR/MON. RECORDS	YES	SQUARE BRASS BOLT FOUND IN N.B. LANE, 11.5 FT LEFT OF CL. (SE COR. SEC 35, T8N, R7E)	1	1
301+12	104	871629.815	971000.862	4.0 FT LT	SEC COR/MON. RECORDS	YES	MAGNAIL FOUND IN N.B. LANE, 4.0 FT LEFT OF CL. (W 1/4 COR. SEC 1, T7N, R7E)	1	1
TOTALS								4	4

MODEL: Default
 FILE: h:\mfc_p\pub\harcour.dwg
 PROJECT: 74924\CAD\DATA\CAD\Drawings\DOT_Offices\Drawings\74924\dot\schedule.dwg

USER NAME = steffenmk	DESIGNED -	REVISED -
	DRAWN -	REVISED -
PLOT SCALE = 100.0000' / in.	CHECKED -	REVISED -
PLOT DATE = 12/12/2019	DATE -	REVISED -

**STATE OF ILLINOIS
DEPARTMENT OF TRANSPORTATION**

SURVEY MONUMENT SCHEDULE

SCALE: SHEET 1 OF 1 SHEETS STA. TO STA.

F.A.P. RTE.	SECTION	COUNTY	TOTAL SHEETS	SHEET NO.
828	13R5-4	EFFINGHAM	16	7
			CONTRACT NO. 74924	
		ILLINOIS	FED. AID PROJECT	

RESURFACING SCHEDULE

STATION TO STATION			LENGTH	PAVEMENT WIDTH	AREA	HOT-MIX ASPHALT SURFACE REMOVAL - BUTT JOINT	HOT-MIX ASPHALT SURFACE REMOVAL, 3 3/4"	HOT-MIX ASPHALT SURFACE REMOVAL, 3"	BITUMINOUS MATERIALS (TACK COAT)	HOT-MIX ASPHALT BINDER COURSE, IL-9.5FG, N70	HOT-MIX ASPHALT SURFACE COURSE, IL-9.5, MIX "C", N70	LONGITUDINAL JOINT SEALANT	AGGREGATE WEDGE SHOULDERS, TYPE B	TEMPORARY RAMP
			FOOT	FOOT	SQ YD	SQ YD	SQ YD	SQ YD	POUND	TON	TON	FOOT	TON	SQ YD
0+13	TO	1+78	165	VAR.	710		710		458	66	76	165	21	160
1+78	TO	2+34	56	24	PAVING OMISSION - RR TRACKS									
2+34	TO	2+61	27	24	72	133			90	13	15	50	3	13
2+61	TO	23+31	2070	24	5519			5519	3684	541	618	2047	247	
23+31	TO	62+25	3894	24	10385			10385	7010	1018	1163	3894	493	
62+25	TO	115+92	5367	24	14313			14313	9661	1403	1603	5367	655	
115+92	TO	142+14	2621	24	6990			6990	4719	685	783	2621	332	
142+14	TO	168+42	2628	24	7008			7008	4730	687	785	2628	333	
168+42	TO	212+18	4377	24	11671			11671	7878	1144	1307	4377	545	
212+18	TO	259+33	4715	24	12572			12572	8486	1232	1408	4715	589	
259+33	TO	288+99	2966	24	7909			7909	5339	775	886	2966	370	
288+99	TO	315+01	2602	24	6938			6938	4683	680	777	2602	329	
315+01	TO	341+02	2602	24	6938			6938	4683	680	777	2602	324	
341+02	TO	364+74	2372	24	6325			6325	4270	620	708	2372	292	
364+74	TO	370+09	535	24	1426			1426	963	140	160	535	65	
370+09	TO	374+74	465	24	1240			1240	837	122	139	465	59	
374+74	TO	375+24	50	24	133	133			90	13	15	50	6	13
TOTALS						266	710	99235	67580	9818	11220	37455	4663	186

MODEL: Default
 FILE: h:\mfc_p\pub\harcourm.dwg
 PROJECT: 74924\CAD\DATA\CAD\Drawings\DOT_Offices\Drawings\74924-ResurfacingSchedule.dwg

USER NAME = steffemk	DESIGNED -	REVISED -
	DRAWN -	REVISED -
PLOT SCALE = 100.0000' / in.	CHECKED -	REVISED -
PLOT DATE = 12/12/2019	DATE -	REVISED -

STATE OF ILLINOIS
 DEPARTMENT OF TRANSPORTATION

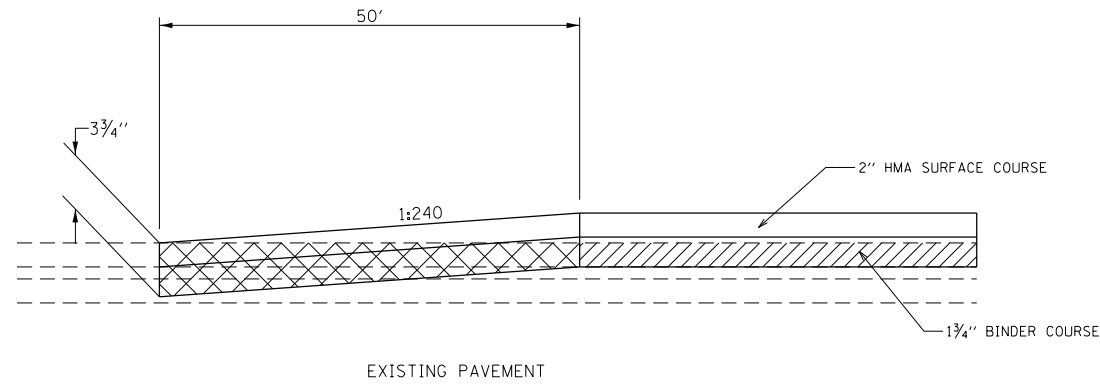
RESURFACING SCHEDULE



SCALE: SHEET 1 OF 1 SHEETS STA. TO STA.

F.A.P. RTE.	SECTION	COUNTY	TOTAL SHEETS	SHEET NO.
828	13R5-4	EFFINGHAM	16	8
CONTRACT NO. 74924			ILLINOIS FED. AID PROJECT	

BUTT JOINT DETAIL

STA. 2+34 TO STA. 2+84
 STA. 374+74 TO STA. 375+24



-  HOT-MIX ASPHALT SURFACE REMOVAL, 3"
-  HOT-MIX ASPHALT SURFACE REMOVAL - BUTT JOINT

MODEL: Default
 FILE: h:\mhc\p\pub\haronm.dwg
 PROJECT: 74924\CAADDATA\CADD\Drawings\DOT_Offices\Drawings\74924\Sheet\10.dwg

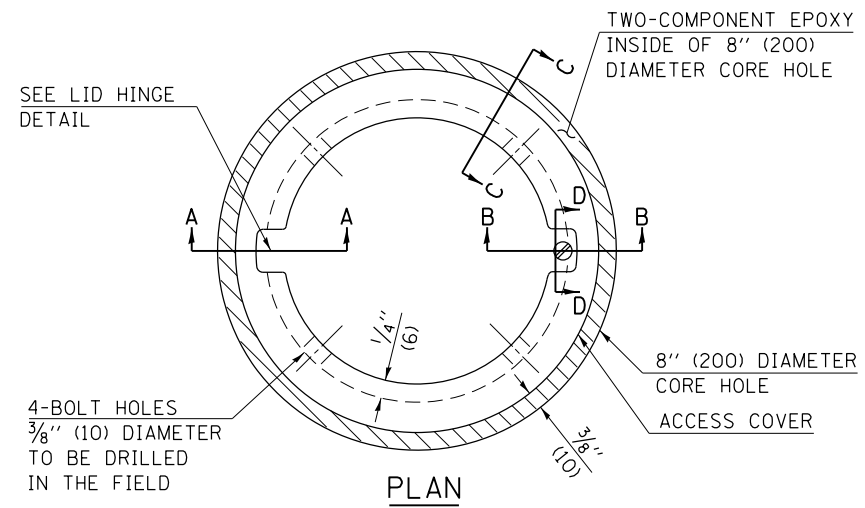
USER NAME = steffenmk	DESIGNED -	REVISED -
	DRAWN -	REVISED -
PLOT SCALE = 100.0000 ' / in.	CHECKED -	REVISED -
PLOT DATE = 12/12/2019	DATE -	REVISED -

**STATE OF ILLINOIS
 DEPARTMENT OF TRANSPORTATION**

BUTT-JOINT DETAIL

SCALE: SHEET 1 OF 1 SHEETS STA. TO STA.

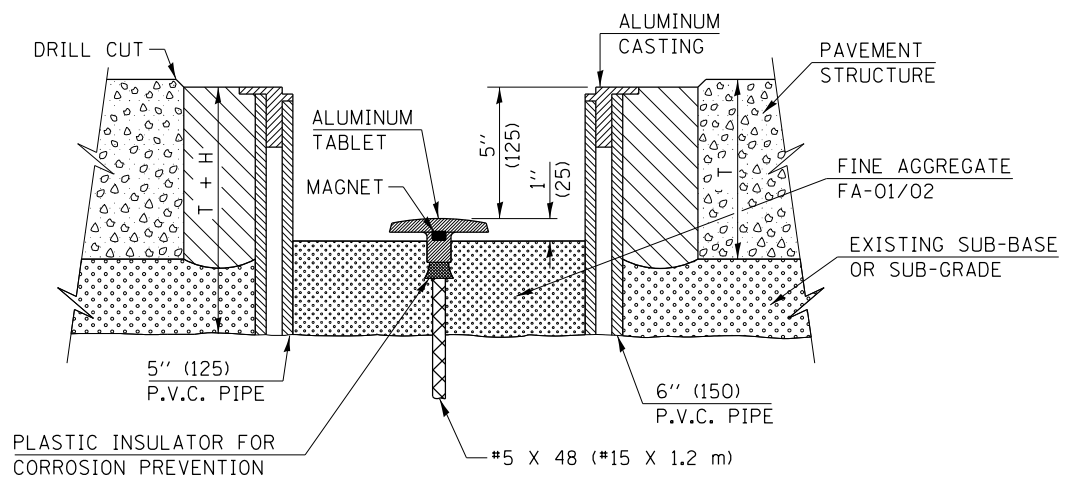
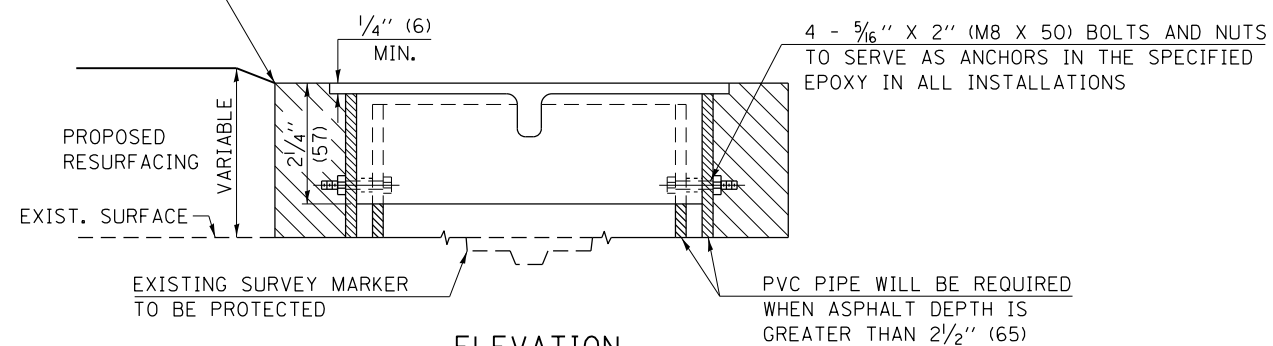
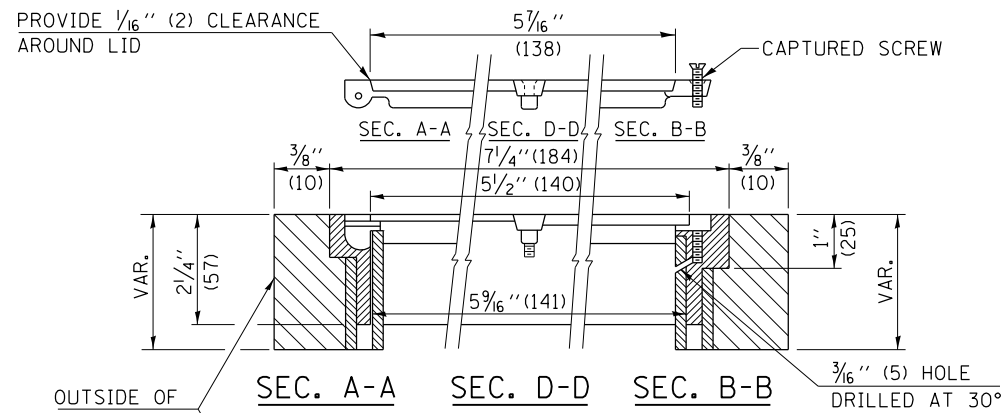
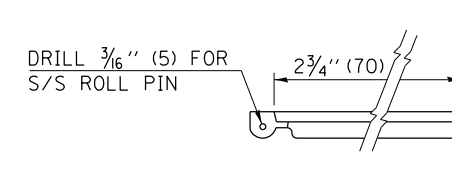
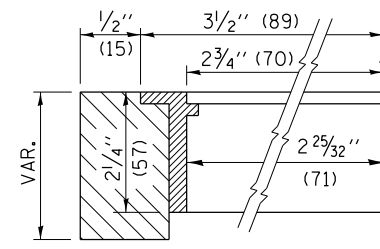
F.A.P. RTE.	SECTION	COUNTY	TOTAL SHEETS	SHEET NO.
828	13R5-4	EFFINGHAM	16	10
				CONTRACT NO. 74924
		ILLINOIS	FED. AID PROJECT	



LEGEND

- ALUMINUM CASTING
- 5" (125) OR 6" (150) P.V.C. PIPE
- TWO-COMPONENT EPOXY
- T = THICKNESS OF PAVEMENT STRUCTURE
- H = THE THICKNESS OF THE SUB-BASE GRANULAR + 1" (25)

BILL OF MATERIAL	
ALUMINUM CASTING OF THE DIMENSIONS AND SPECIFICATIONS SHOWN OR OTHER SUBJECT TO ENGINEER'S APPROVAL OF SHOP DRAWINGS, 4 EACH - 5/16" X 2" (M8 X 50) BOLTS WITH NUTS, EPOXY, 5" OR 6" (125 mm OR 150 mm) DIAMETER P.V.C. PIPE, SCHEDULE 40 (WHEN REQUIRED).	



EXISTING SURVEY MARKER

PROPOSED SURVEY MARKER

NOT TO SCALE

FILE NAME =	USER NAME = steffennk	DESIGNED -	REVISED - MAD 6-11
pw:\planroom.dot.illinois.gov\PIDOT\Documents\IDOT Offices\District 7\Projects\74924\DRAWN\CADsheets\0774924-shr-details.dgn		REVISIONS	
	PLOT SCALE = 100.0000' / 1"	CHECKED -	REVISED -
	PLOT DATE = 12/12/2019	DATE -	REVISED -

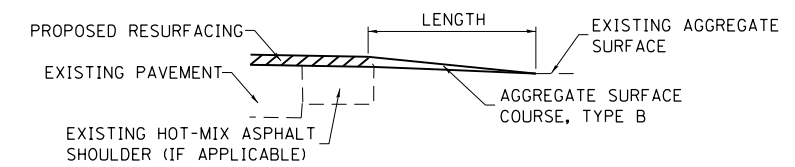
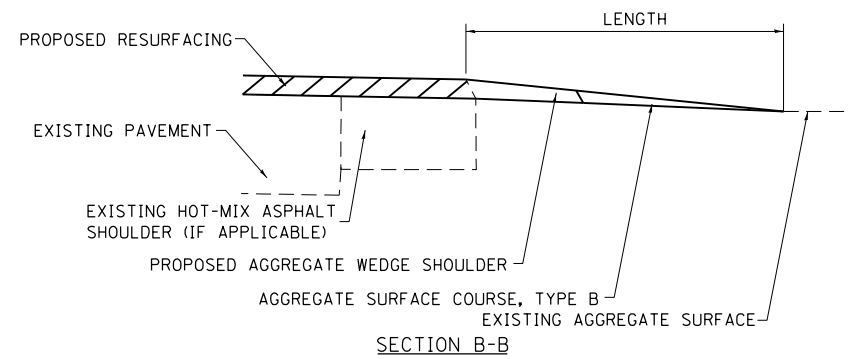
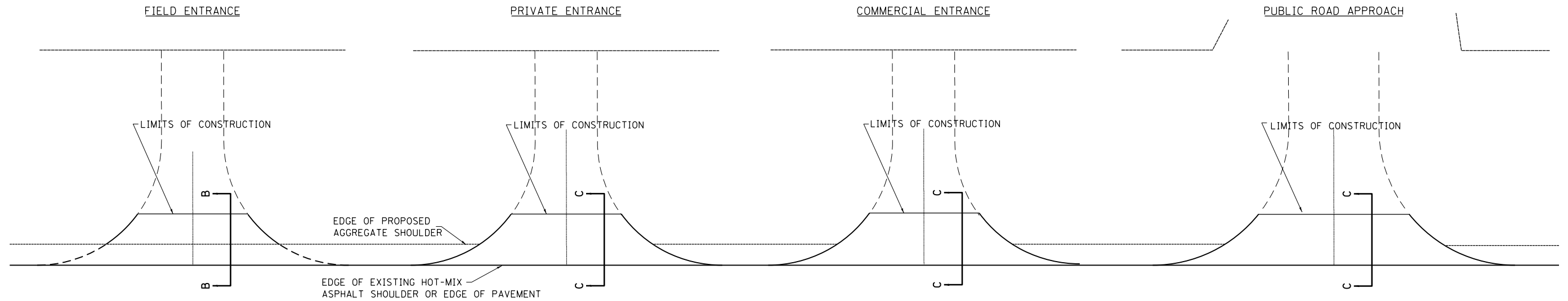
STATE OF ILLINOIS
DEPARTMENT OF TRANSPORTATION

SURVEY MARKER VAULT

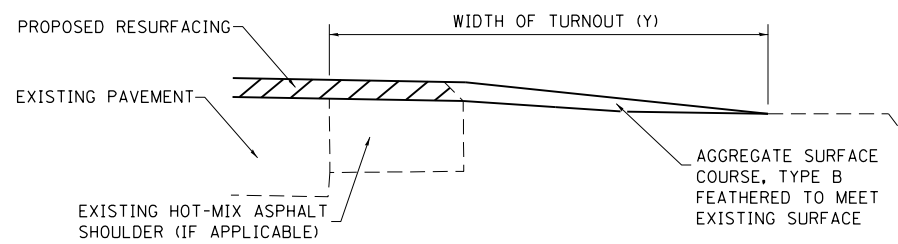
SCALE: SHEET NO. 1 OF 1 SHEETS STA. TO STA.

DISTRICT 7 DETAIL NO. 20070202

F.A.P. RTE.	SECTION	COUNTY	TOTAL SHEETS	SHEET NO.
828	13RS-4	EFFINGHAM	16	11
CONTRACT NO. 74924				
FED. ROAD DIST. NO. ILLINOIS FED. AID PROJECT				

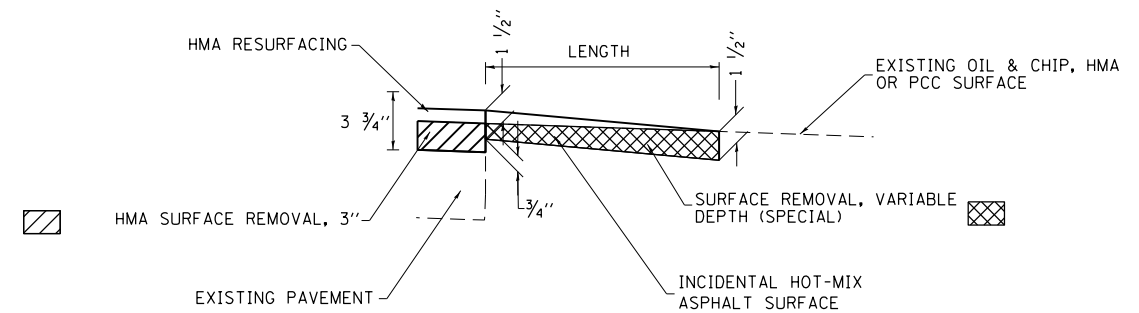


SECTION C-C



TYPICAL SECTION AT MAILBOX TURNOUT

NOTE: SEE STANDARD 406201 FOR MAILBOX TURNOUT DETAILS



SECTION C-C

NOTES

LENGTH = 10' UNLESS OTHERWISE NOTED ON PLANS

IF THERE IS NOT EXISTING HOT-MIX ASPHALT SHOULDER THEN THE ENTRANCE TAPER STARTS AT THE EDGE OF EXISTING PAVEMENT.

THE COST OF THE BITUMINOUS MATERIALS (TACK COAT) FOR ENTRANCES AND PUBLIC ROAD APPROACHES SHALL BE INCLUDED IN THE PAY ITEM INCIDENTAL HOT-MIX ASPHALT SURFACING.

MODEL: Default
FILE: Mailbox_Plan_Supplemental.dwg
PROJECT: 13R5-4
DRAWING: 13R5-4-MAILBOX
DATE: 12/12/2019

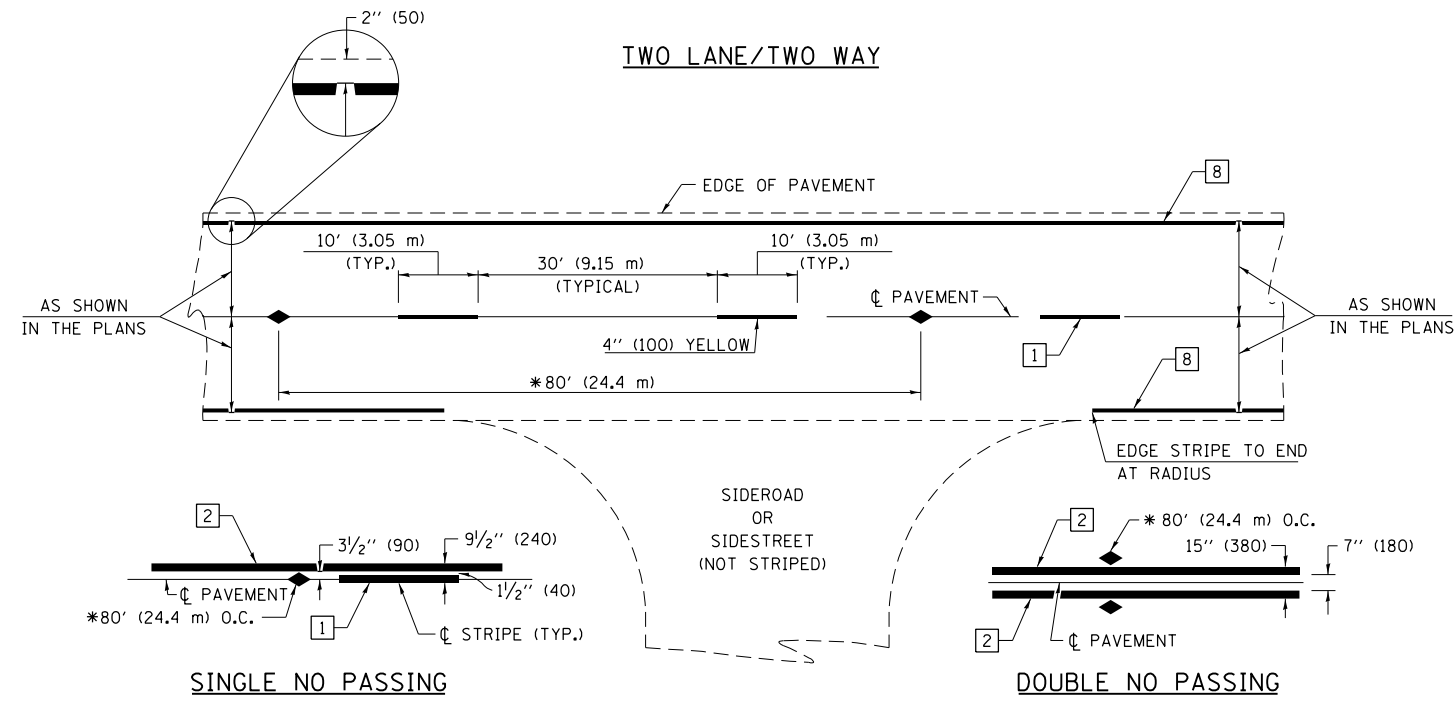
USER NAME = steffenmk	DESIGNED -	REVISED -
	DRAWN -	REVISED -
PLOT SCALE = 100.0000' / in.	CHECKED -	REVISED -
PLOT DATE = 12/12/2019	DATE -	REVISED -

STATE OF ILLINOIS
DEPARTMENT OF TRANSPORTATION

RURAL ENTRANCE AND MAILBOX TURNOUT DETAILS
WITH SHOULDERS

SCALE: SHEET 1 OF 1 SHEETS STA. TO STA.

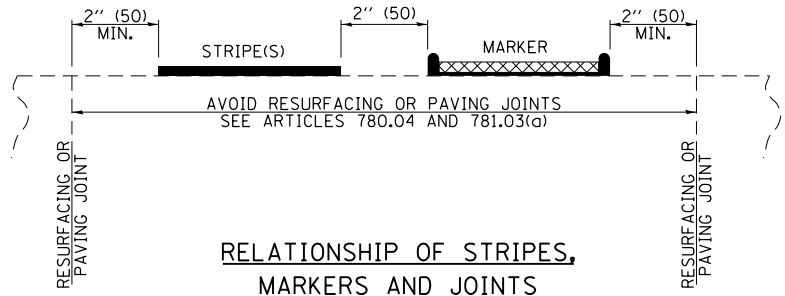
F.A.P. RTE.	SECTION	COUNTY	TOTAL SHEETS	SHEET NO.
828	13R5-4	EFFINGHAM	16	12
CONTRACT NO. 74924			ILLINOIS FED. AID PROJECT	



* REDUCE TO 40' (12.2 m) O.C. ON CURVES WITH POSTED OR ADVISORY SPEEDS OF 45 mph (70 km/h) OR LESS.

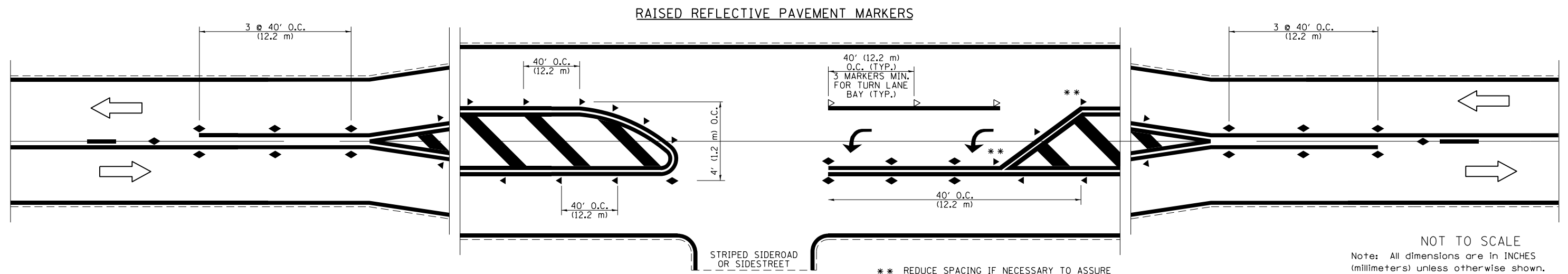
PAVEMENT MARKING LEGEND

- 1 4" (100) SKIP-DASH (YELLOW)
 - 2 4" (100) SOLID (YELLOW)
 - 3 12" (300) DIAGONAL (YELLOW)
 - 4 4" (100) DOUBLE YELLOW (NARROW)
 - 5 12" (300) SOLID WHITE
 - 6 RESERVED
 - 7 6" (150) SKIP-DASH (WHITE)
 - 8 4" (100) SOLID (WHITE)
 - 9 12" (300) DIAGONAL (WHITE)
 - 10 6" (150) SOLID (WHITE)
 - 11 24" (600) STOP BAR (WHITE)
 - 12 8" (200) SOLID (WHITE)
 - 13 4" (100) PARKING WHITE
-



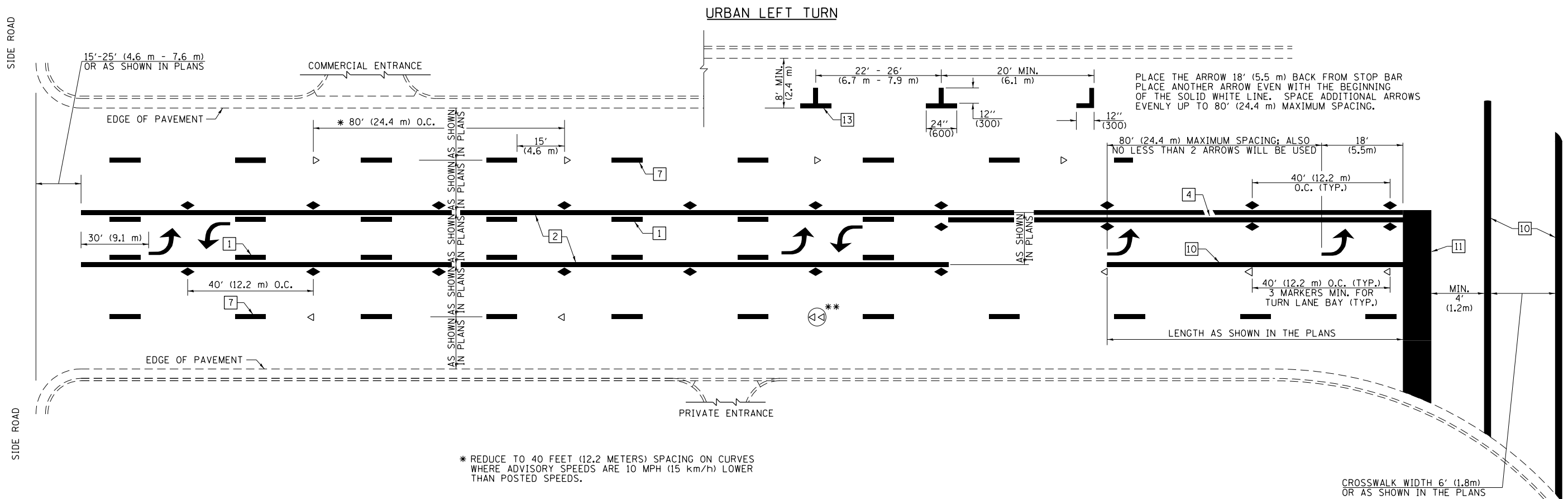
TYPICAL PAVEMENT MARKERS LEGEND

- ◆ TWO-WAY AMBER MARKER
- ▶ ONE-WAY AMBER MARKER
- ▷ ONE-WAY CRYSTAL MARKER



** REDUCE SPACING IF NECESSARY TO ASSURE MARKERS AT CORNER POINTS.

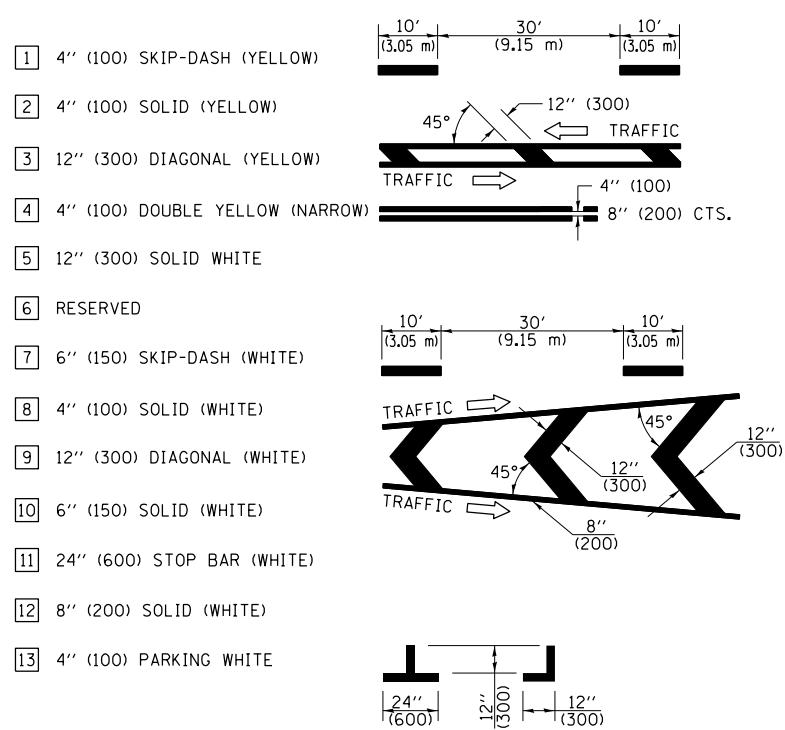
NOT TO SCALE
Note: All dimensions are in INCHES (millimeters) unless otherwise shown.



* REDUCE TO 40 FEET (12.2 METERS) SPACING ON CURVES WHERE ADVISORY SPEEDS ARE 10 MPH (15 km/h) LOWER THAN POSTED SPEEDS.

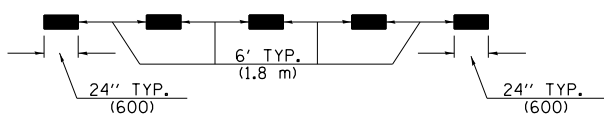
** DOUBLE LANE LINE MARKERS SHALL BE SPECIFIED AND SPACED AS SHOWN IN HIGHWAY STANDARD 781001 FOR MULTI-LANE DIVIDED AND UNDIVIDED HIGHWAYS.

PAVEMENT MARKING LEGEND

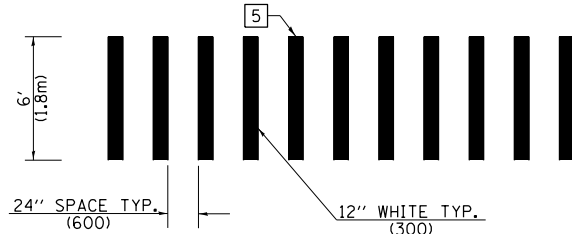


GENERAL NOTES

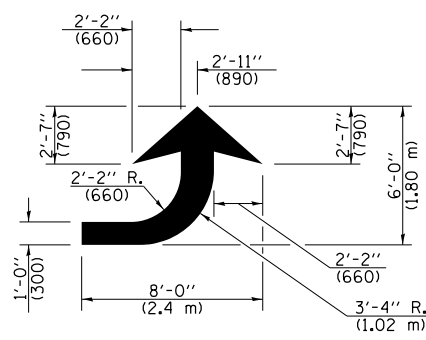
- TURN ARROW PAIRS SHALL BE PLACED AT 250' (75 m) INTERVALS AND SHALL BE EVENLY SPACED BETWEEN BOTH ENDS OF THE BIDIRECTIONAL LEFT TURN LANE. USE A MINIMUM OF TWO PAIRS PER BLOCK.
- THE SOLID YELLOW PAVEMENT MARKINGS [2] SHOULD GENERALLY START OR END NEAR THE RADIUS POINT OF EACH STREET RETURN EXCEPT WHERE ONE OR BOTH ENDS WOULD INCLUDE STOP BARS.
- THE SKIP-DASH PAVEMENT MARKINGS [1] OR [7] SHOULD BE CENTERED BETWEEN BOTH ENDS OF EACH CITY BLOCK AND SHALL BE PLACED SO THEY LINE UP ACROSS FROM EACH OTHER.
- USE LARGE ARROW SIZE FOR BOTH RURAL AND URBAN LOCATIONS. (SEE LAST PAGE OF SECTION 780x FOR SYMBOLS TABLE)
- LANE LINE EXTENSIONS SHALL BE THE SAME COLOR AND WIDTH AS THE LANE LINE BEING EXTENDED.



LANE LINE EXTENSIONS

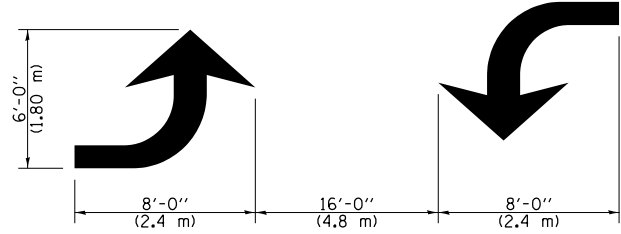


CROSSWALK DETAIL (DECATUR CITY LIMITS ONLY)



LEFT ARROW

REVERSE FOR RIGHT ARROW
AREA = 15.6 SQ. FT. (1.47 m²)
(WHITE)



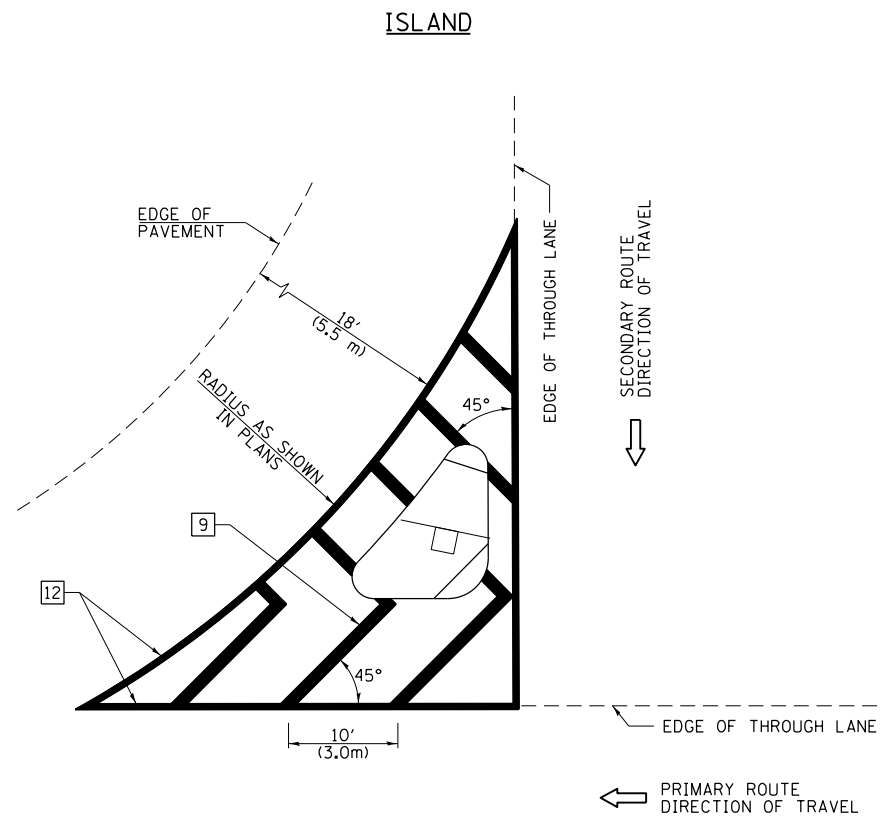
TYPICAL DOUBLE TURN ARROWS (WHITE)

NOT TO SCALE

Note: All dimensions are in INCHES (millimeters) unless otherwise shown.

DISTRICT 7 DETAIL NO. 7800001

FILE NAME =	USER NAME = steffennk	DESIGNED -	REVISED -	STATE OF ILLINOIS DEPARTMENT OF TRANSPORTATION	PAVEMENT MARKING AND RAISED REFLECTIVE PAVEMENT MARKERS (RURAL & URBAN APPLICATIONS)	F.A.P. RTE.	SECTION	COUNTY	TOTAL SHEETS	SHEET NO.	
pw:\planroom.dot.illinois.gov\PWIDOT\Documents\IDOT Offices\District 7\Projects\74924\DRAWN\CADsheets\0774924-sht-details.dgn		REVISIONS				828	13RS-4	EFFINGHAM	16	14	
	PLOT SCALE = 100.0000' / in.	CHECKED -	REVISED -			CONTRACT NO. 74924					
	PLOT DATE = 12/12/2019	DATE -	REVISED -			ILLINOIS FED. AID PROJECT					

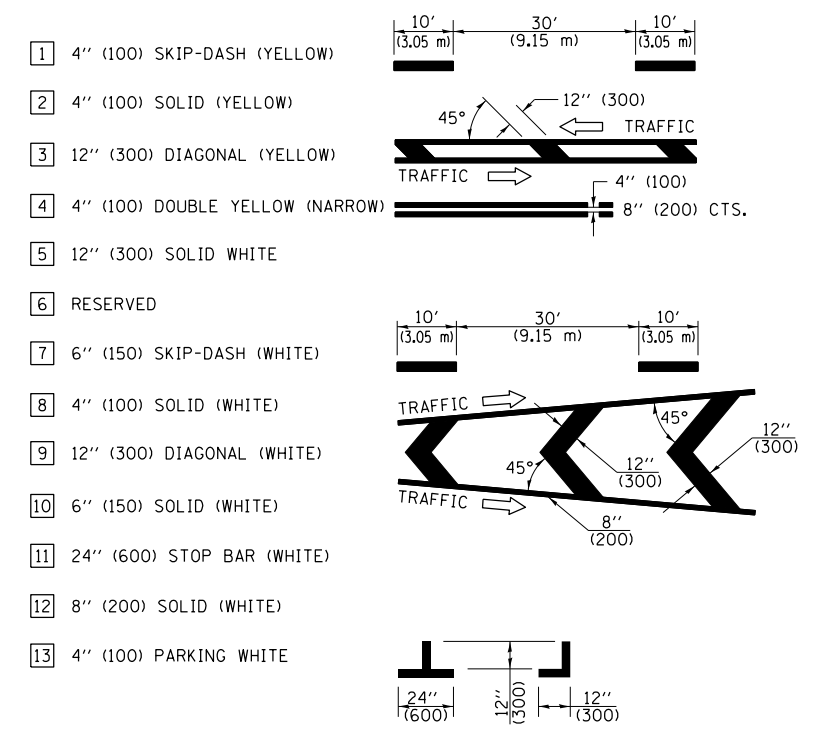


GENERAL NOTES

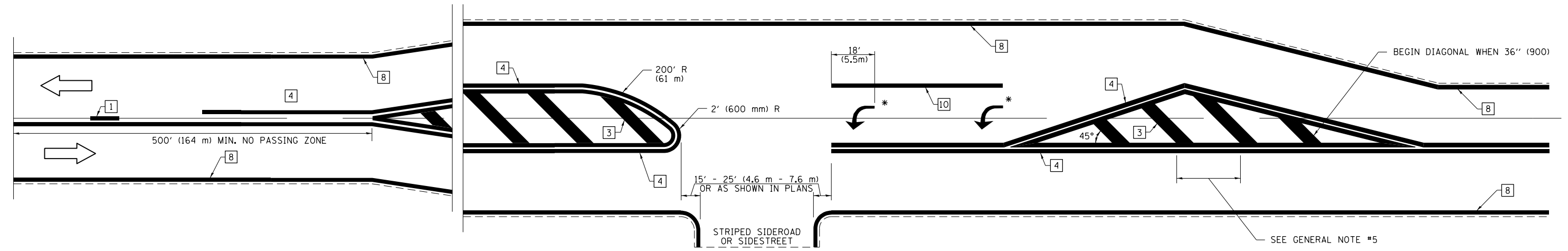
1. RAISED AND CORRUGATED MEDIANS SHALL BE OUTLINED WITH [2] IF PRESENT.
2. SOME OF THE INFORMATION INCLUDED WITH THIS DETAIL MAY NOT BE APPLICABLE TO THIS IMPROVEMENT.
3. PAVEMENT MARKINGS ARE TO BE EXTENDED THROUGH OMISSIONS WHEN APPLICABLE.
4. FINAL PAVEMENT MARKINGS SHALL BE IN PLACE PRIOR TO PLACING ANY RAISED REFLECTIVE PAVEMENT MARKERS.
5. THE FOLLOWING CRITERIA SHALL BE USED FOR SELECTING THE DIAGONAL PAVEMENT MARKING SPACING:

< 30 MPH (< 50 km/h)	15' (4.5 m)
30-45 MPH (50-75 km/h)	20' (6.0 m)
> 45 MPH (> 75 km/h)	30' (9.0 m)

PAVEMENT MARKING LEGEND



RURAL LEFT TURN STRIPING



NOT TO SCALE
 Note: All dimensions are in INCHES (millimeters) unless otherwise shown.

DISTRICT 7 DETAIL NO. 7800001

FILE NAME =	USER NAME = steffenmk	DESIGNED -	REVISED -
pw:\planroom.dot.illinois.gov\PIDOT\Documents\IDOT Offices\District 7\Projects\74924\DRAWN\CADsheets\0774924-shd-details.dgn		REVISIONS	REVISIONS
	PLOT SCALE = 100.0000' / in.	CHECKED -	REVISED -
	PLOT DATE = 12/12/2019	DATE -	REVISED -

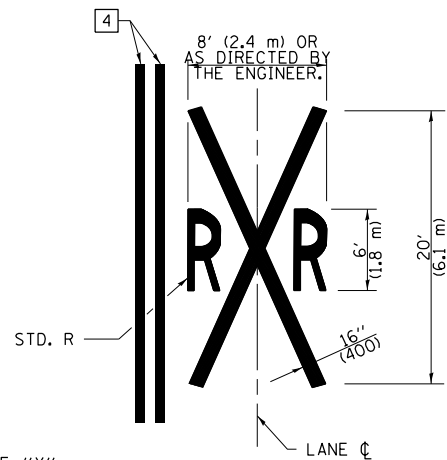
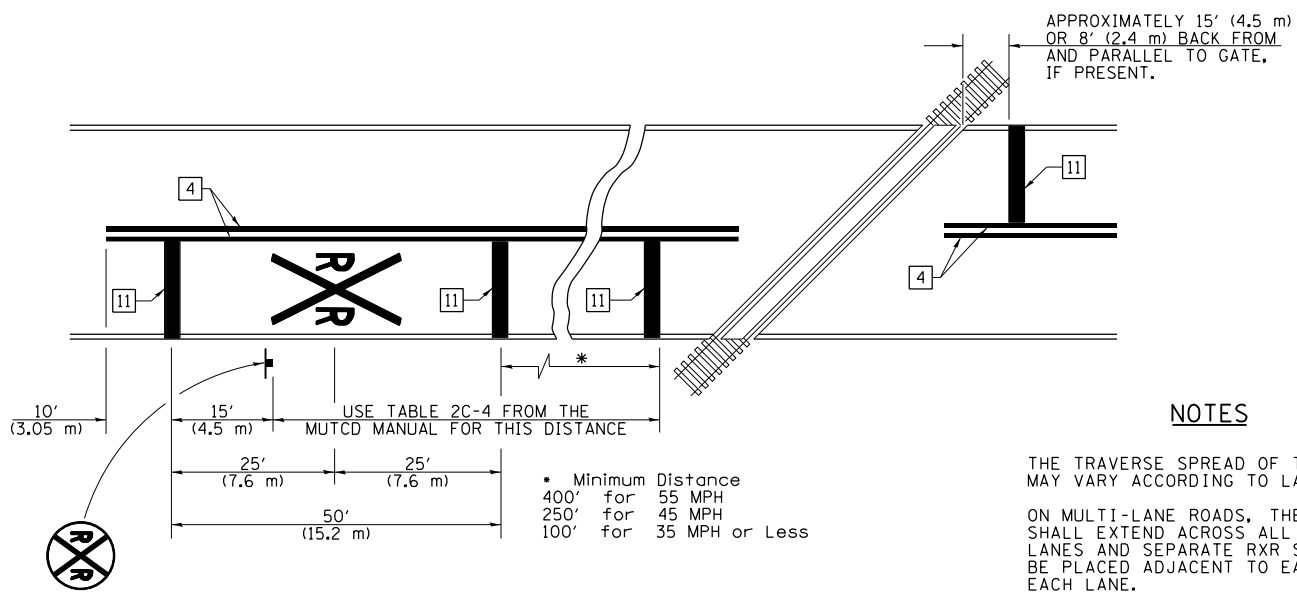
**STATE OF ILLINOIS
 DEPARTMENT OF TRANSPORTATION**

**PAVEMENT MARKING AND RAISED REFLECTIVE PAVEMENT MARKERS
 (RURAL & URBAN APPLICATIONS)**

SCALE: SHEET NO. 3 OF 4 SHEETS STA. TO STA.

F.A.P. RTE.	SECTION	COUNTY	TOTAL SHEETS	SHEET NO.
828	13RS-4	EFFINGHAM	16	15
CONTRACT NO. 74924				
ILLINOIS FED. AID PROJECT				

PAVEMENT MARKINGS AT RAILROAD-HIGHWAY GRADE CROSSING



NOTES

THE TRAVERSE SPREAD OF THE "X" MAY VARY ACCORDING TO LANE WIDTH.

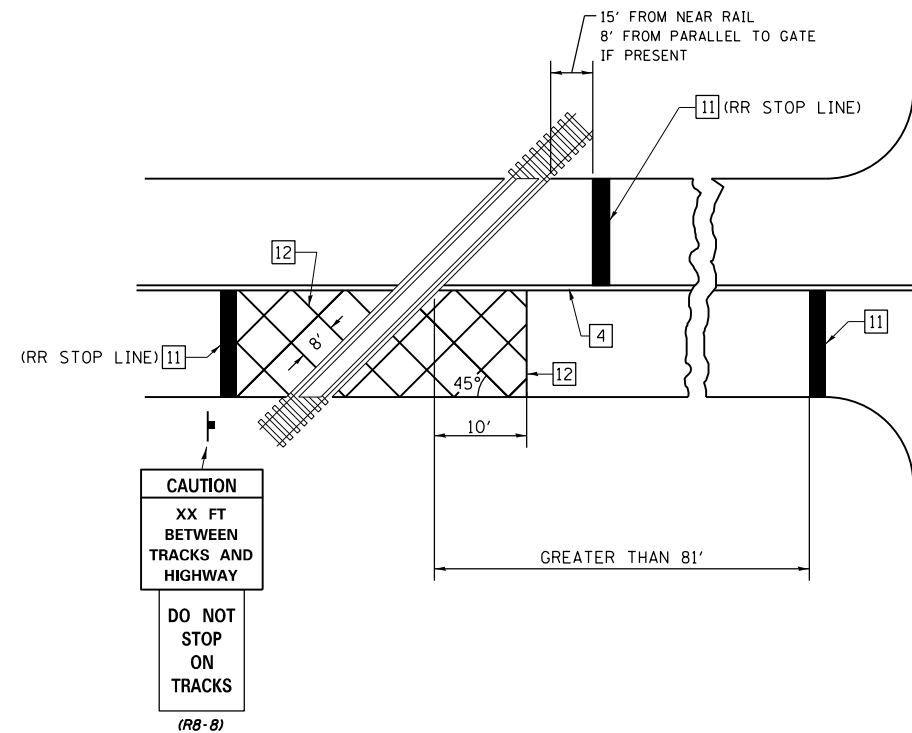
ON MULTI-LANE ROADS, THE STOP LINES SHALL EXTEND ACROSS ALL APPROACH LANES AND SEPARATE RXR SYMBOLS SHALL BE PLACED ADJACENT TO EACH OTHER IN EACH LANE.

WHEN THE PAVEMENT MARKING SYMBOL IS USED, A PORTION OF THE SYMBOL SHOULD BE LOCATED DIRECTLY ADJACENT TO THE ADVANCE WARNING SIGN (W10-1) AS PLACED BY TABLE II-1, CONDITION B OF THE MUTCD.

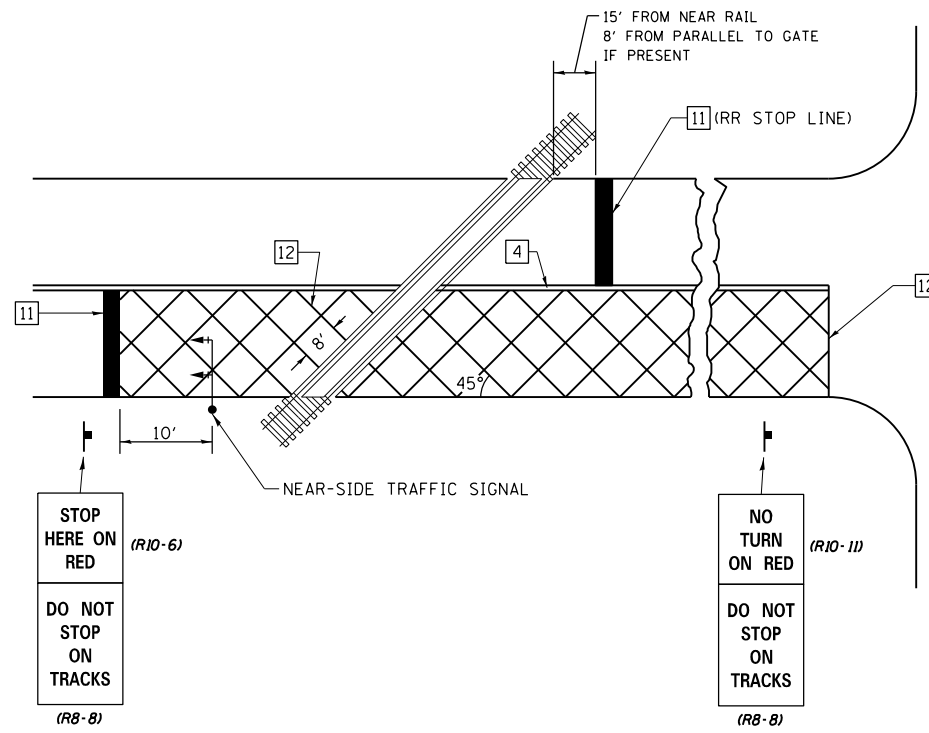
PAVEMENT MARKING LEGEND

- 1 4" (100) SKIP-DASH (YELLOW)
- 2 4" (100) SOLID (YELLOW)
- 3 12" (300) DIAGONAL (YELLOW)
- 4 4" (100) DOUBLE YELLOW (NARROW)
- 5 12" (300) SOLID WHITE
- 6 RESERVED
- 7 6" (150) SKIP-DASH (WHITE)
- 8 4" (100) SOLID (WHITE)
- 9 12" (300) DIAGONAL (WHITE)
- 10 6" (150) SOLID (WHITE)
- 11 24" (600) STOP BAR (WHITE)
- 12 8" (200) SOLID (WHITE)
- 13 4" (100) PARKING WHITE

RAILROAD CROSSING WITH INTERCONNECT ONLY



RAILROAD CROSSING WITH INTERCONNECT AND PRE-SIGNALS



GENERAL NOTES

- SUPPLEMENTAL PAVEMENT MARKINGS TO BE INSTALLED ONLY ON APPROACHES TO INTERSECTIONS CONTROLLED BY TRAFFIC SIGNALS WHICH ARE INTERCONNECTED WITH THE RAILROAD WARNING SIGNALS.
- EXTEND PAVEMENT MARKINGS TO THE INTERSECTION ONLY WHERE NEAR-SIDE TRAFFIC SIGNALS ARE USED.

SUPPLEMENTAL PAVEMENT MARKING TREATMENT FOR RAILROAD-HIGHWAY GRADE CROSSING

NOT TO SCALE

Note: All dimensions are in INCHES (millimeters) unless otherwise shown.

DISTRICT 7 DETAIL NO. 7800001

FILE NAME =	USER NAME = steffenmk	DESIGNED -	REVISED -	STATE OF ILLINOIS DEPARTMENT OF TRANSPORTATION	PAVEMENT MARKING AND RAISED REFLECTIVE PAVEMENT MARKERS (RURAL & URBAN APPLICATIONS)	F.A.P. RTE.	SECTION	COUNTY	TOTAL SHEETS	SHEET NO.
pw:\planroom.dot.illinois.gov\PIWIDOT\Documents\IDOT Offices\District 7\Projects\74924\DRAWN\CADsheets\0774924-sht-details.dgn	PLOT SCALE = 100.0000' / in.	CHECKED -	REVISED -			828	13RS-4	EFFINGHAM	16	16
	PLOT DATE = 12/12/2019	DATE -	REVISED -			CONTRACT NO. 74924				
						ILLINOIS FED. AID PROJECT				