

STATE OF ILLINOIS  
DEPARTMENT OF TRANSPORTATION

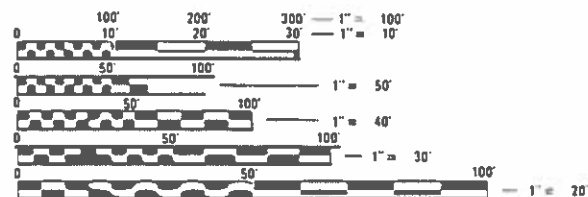
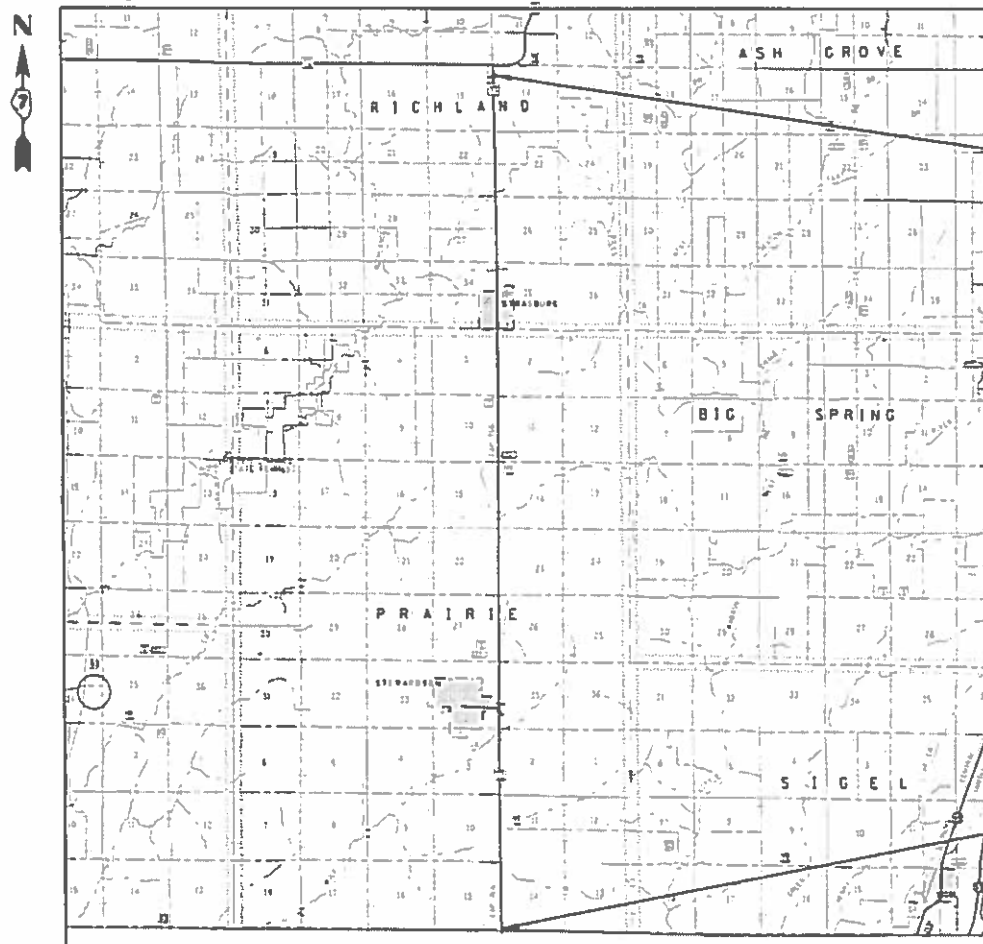
F & P R.T.E.	SECTION	COUNTY	TOTAL SHEETS	SHEET NO.
766	1105,106) PVMT PRSV	SHELBY	3	1
ILLINOIS CONTRACT NO. 74953				

FOR INDEX OF SHEETS, SEE SHEET NO. 2

**PROPOSED  
HIGHWAY PLANS**

FAP 766 (ILL ROUTE 32)  
SECTION (105,106) PVMT PRSV  
PROJECT STP-6VED(276)  
CAPE SEAL, PATCHING  
SHELBY COUNTY

C-97-030-20



FULL SIZE PLANS HAVE BEEN PREPARED USING STANDARD ENGINEERING SCALES. REDUCED SIZED PLANS WILL NOT CONFORM TO STANDARD SCALES. IN MAKING MEASUREMENTS ON REDUCED PLANS, THE ABOVE SCALES MAY BE USED.

J.U.L.I.E.  
JOINT UTILITY LOCATION INFORMATION FOR EXCAVATORS  
1-800-892-0123  
OR 811

PROJECT ENGINEER: DEBRA BARRETT  
PROJECT MANAGER: LEVI LUND

CONTRACT NO. 74953

GROSS LENGTH = 67,510.00 FT. = 12.786 MILE  
NET LENGTH = 67,510.00 FT. = 12.786 MILE

STATE OF ILLINOIS  
DEPARTMENT OF TRANSPORTATION

SUBMITTED December 5, 19  
*J. M. P. Myers*  
REGIONAL ENGINEER

Jan 31, 20  
*Samuel A. Quinn*  
ENGINEER OF DESIGN AND ENVIRONMENT

Jan 31, 20  
*Samuel A. Quinn*  
DIRECTOR OF HIGHWAYS PROJECT IMPLEMENTATION

PRINTED BY THE AUTHORITY  
OF THE STATE OF ILLINOIS

GENERAL NOTES

THIS SECTION SHALL BE CONSTRUCTED IN ACCORDANCE WITH THE PLANS; THE "STANDARD SPECIFICATIONS FOR ROAD AND BRIDGE CONSTRUCTION" ADOPTED JANUARY 1, 2016; THE "SUPPLEMENTAL SPECIFICATIONS AND RECURRING SPECIAL PROVISIONS" INDICATED ON THE CHECK SHEET, AND "THE SPECIAL PROVISIONS" INCLUDED IN THIS PROPOSAL.

THE PROPOSED WORK IS LOCATED ON ILL 32 IN SHELBY COUNTY FROM ILL 16 TO THE EFFINGHAM COUNTY LINE.

THE WORK INCLUDED IN THIS SECTION CONSISTS OF APPLYING CAPE SEAL TO IL 32, PLUS ANY OTHER NECESSARY WORK TO COMPLETE THE SECTION.

FOR THE CAPE SEAL, THE AGGREGATE GRADATION FOR THE A-1 BITUMINOUS SURFACE TREATMENT SHALL BE CRUSHED STONE, CA 16 AND FRICTION AGGREGATE MIXTURE C.

PAVEMENT MARKING SHALL BE APPLIED IN ACCORDANCE WITH SECTION 780 OF THE STANDARD SPECIFICATIONS. SHORT TERM PAVEMENT MARKING SHALL BE APPLIED TO THE A-1 TREATMENT AND THE MICROSURFACE. THE CENTERLINE STRIPES FOR SHORT TERM PAVEMENT MARKING SHALL BE PAINT AND CONSIST OF 10 FEET LONG AT 40 FEET CENTERS. THE TEMPORARY PAVEMENT MARKING SHALL BE APPLIED DIRECTLY OVER THE SHORT-TERM PAVEMENT MARKING. PAINT PAVEMENT MARKING LINE 4" SHALL BE PLACED AFTER A CURE TIME OF 30 DAYS. THE QUANTITY FOR PAINT PAVEMENT MARKING LINE 4" IS MADE UP OF 132406 FEET WHITE AND 18388 FEET YELLOW.

INDEX OF SHEETS

SHEET NO.	DESCRIPTION
1	COVER SHEET
2	INDEX OF SHEETS & GENERAL NOTES
3	SUMMARY OF QUANTITIES
4	TYPICAL SECTIONS
5	SCHEDULE AND LOCATION MAP

THE FOLLOWING STANDARDS ARE A PART OF THESE PLANS AND ARE INCLUDED FOLLOWING SHEET NUMBER 5:

701201-05	LANE CLOSURE, 2L, 2W, DAY ONLY, FOR SPEEDS > 45 MPH
701301-04	LANE CLOSURE, 2L, 2W, SHORT TIME OPERATIONS
701306-04	LANE CLOSURE, 2L, 2W, SLOW MOVING OPERATIONS DAY ONLY, FOR SPEEDS >= 45 MPH
701311-03	LANE CLOSURE, 2L, 2W, MOVING OPERATIONS - DAY ONLY
701901-08	TRAFFIC CONTROL DEVICES
780001-05	TYPICAL PAVEMENT MARKINGS
781001-04	TYPICAL APPLICATIONS OF RAISED REFLECTIVE PAVEMENT MARKERS

MODEL: Default  
FILE: h:\m\c\p\pub\h\m\room\dat\illinois\poc\p\ill\dot\Documents\IDOT\_Offices\IDOT\74953\CAAD\DATA\CAD\sheet\ID74953-sht-genote.dgn

USER NAME = steffenmk	DESIGNED -	REVISED -
	DRAWN -	REVISED -
PLOT SCALE = 100.0000' / in.	CHECKED -	REVISED -
PLOT DATE = 12/5/2019	DATE -	REVISED -

**STATE OF ILLINOIS  
DEPARTMENT OF TRANSPORTATION**

**GENERAL NOTES**

SCALE: SHEET OF SHEETS STA. TO STA.

F.A.P. RTE.	SECTION	COUNTY	TOTAL SHEETS	SHEET NO.
766	(105,106)PVMT PRSV	SHELBY	5	2
			CONTRACT NO. 74953	
		ILLINOIS	FED. AID PROJECT	

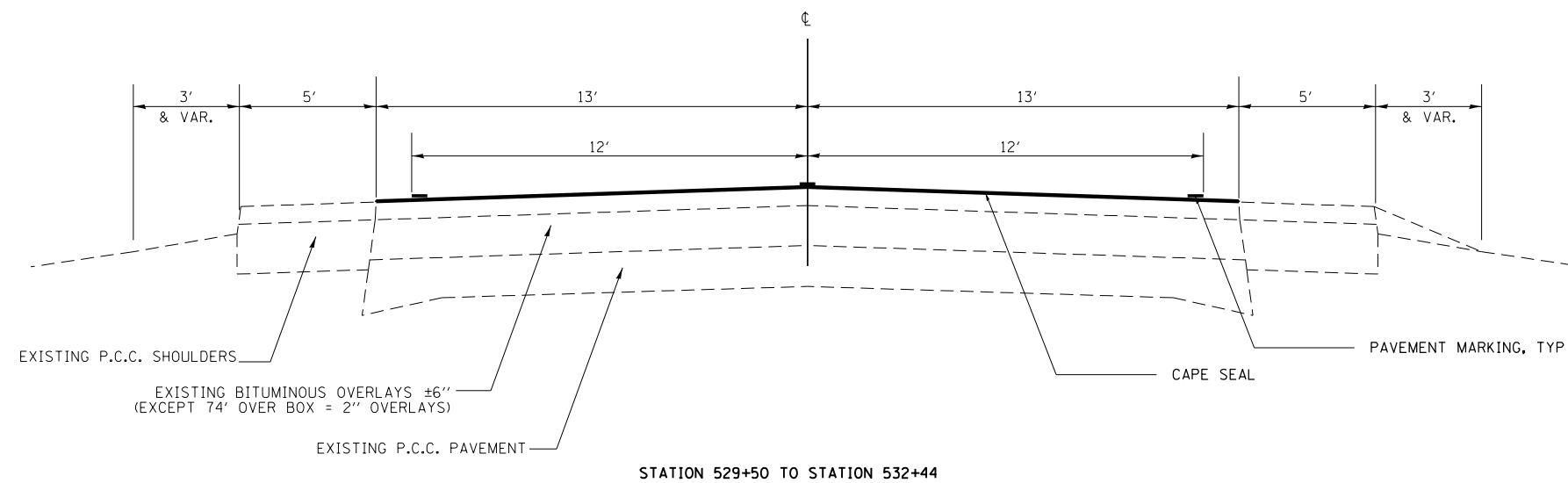
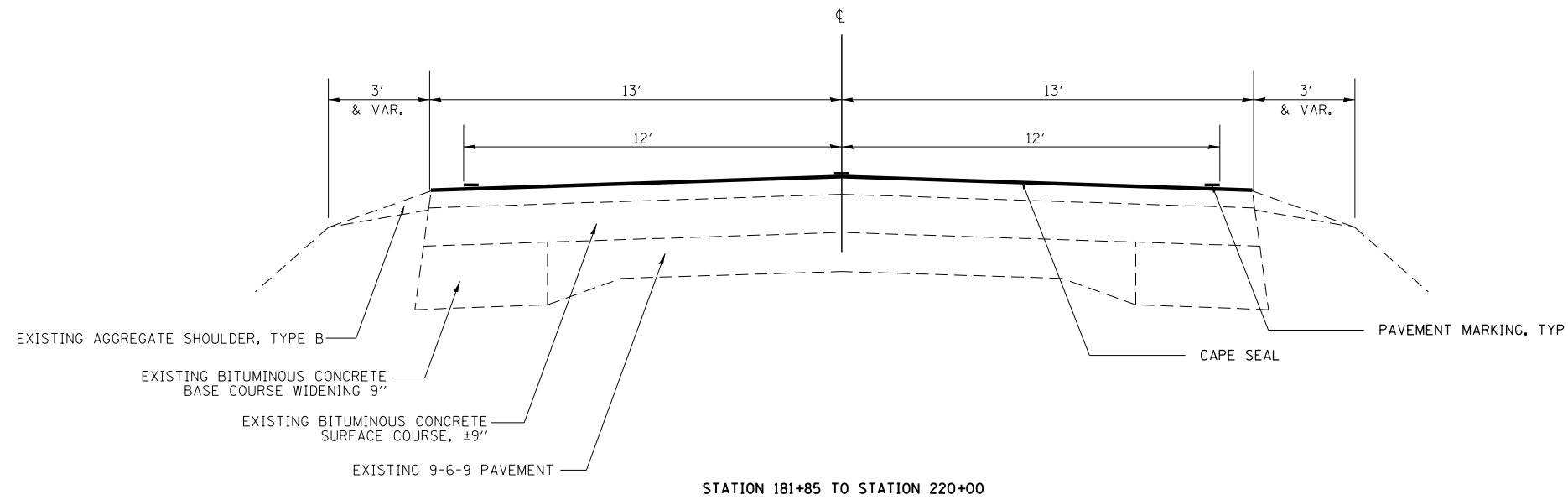
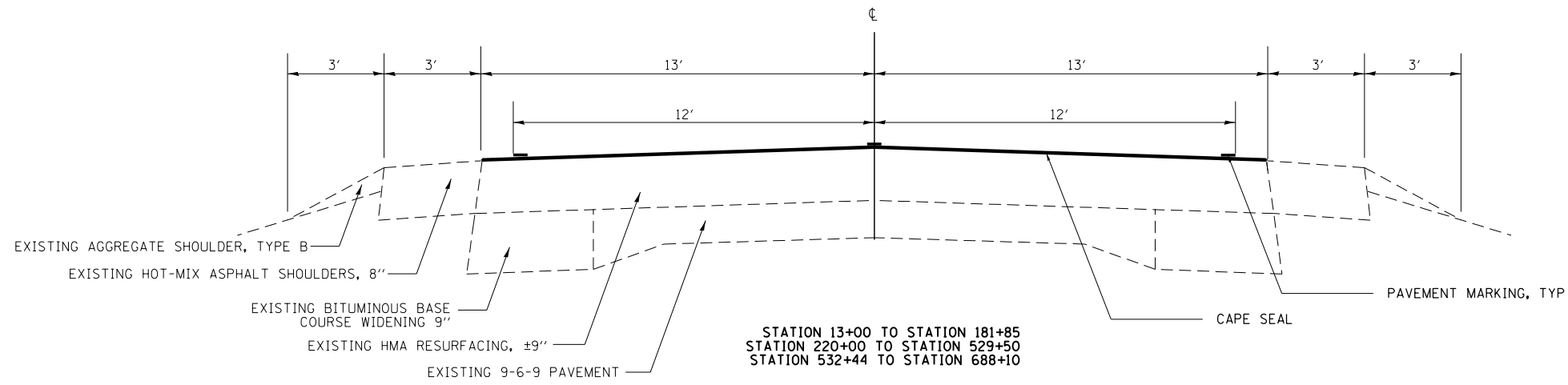
80% FED  
20% STATE

SUMMARY OF QUANTITIES			TOTAL QUANTITIES	CONSTRUCTION TYPE CODE		
CODE NO	ITEM	UNIT		0005		
40400020	BUMP REMOVAL	EACH	127	127		
40500061	CAPE SEAL, TYPE II	SO YD	195029	195029		
67100100	MOBILIZATION	L SUM	1	1		
70100450	TRAFFIC CONTROL AND PROTECTION, STANDARD	L SUM	1	1		
	701201					
70100460	TRAFFIC CONTROL AND PROTECTION, STANDARD	L SUM	1	1		
	701306					
70107025	CHANGEABLE MESSAGE SIGN	CAL DA	28	28		
70300100	SHORT TERM PAVEMENT MARKING	FOOT	32813	32813		
70300220	TEMPORARY PAVEMENT MARKING - LINE 4"	FOOT	150794	150794		
* 78001110	PAINT PAVEMENT MARKING - LINE 4"	FOOT	150794	150794		
* 78100100	RAISED REFLECTIVE PAVEMENT MARKER	EACH	844	844		
78300200	RAISED REFLECTIVE PAVEMENT MARKER REMOVAL	EACH	844	844		
Z0049799	PROTECTING OR RESETTING SURVEY MARKERS	EACH	18	18		
Z0070202	SURVEY MARKER VAULT	EACH	2	2		

\* SPECIALTY ITEM

MODEL: Default  
 FILE: Model: P:\pub\baronm.dwg  
 I:\links\pwr\PROJECTS\DOT\Office\Drawings\74953\CAAD\Drawings\74953-STS-S00.dgn

USER NAME = steffenmk	DESIGNED -	REVISED -	<b>STATE OF ILLINOIS DEPARTMENT OF TRANSPORTATION</b>	<b>SUMMARY OF QUANTITIES</b>			F.A.P. RTE.	SECTION	COUNTY	TOTAL SHEETS	SHEET NO.	
PLOT SCALE = 100.0000' / in.	DRAWN -	REVISED -					766	(105.106) PVMT PRSV	SHELBY	5	3	
PLOT DATE = 12/5/2019	CHECKED -	REVISED -		SCALE:	SHEET	OF	SHEETS	STA.	TO	STA.	ILLINOIS	CONTRACT NO. 74953
	DATE -	REVISED -										



MODEL: Default  
 FILE: h:\m\c\p\suplanroom\dat\illinois\p\w\DOT\Documents\DOT\_Offices\Dir\ctc\_7\Projects\74953\CADD\DATA\CAD\Sheets\ID74953-sheet\typical.dgn

USER NAME = steffemk	DESIGNED -	REVISED -
	DRAWN -	REVISED -
PLOT SCALE = 100.0000' / in.	CHECKED -	REVISED -
PLOT DATE = 12/5/2019	DATE -	REVISED -

**STATE OF ILLINOIS  
 DEPARTMENT OF TRANSPORTATION**

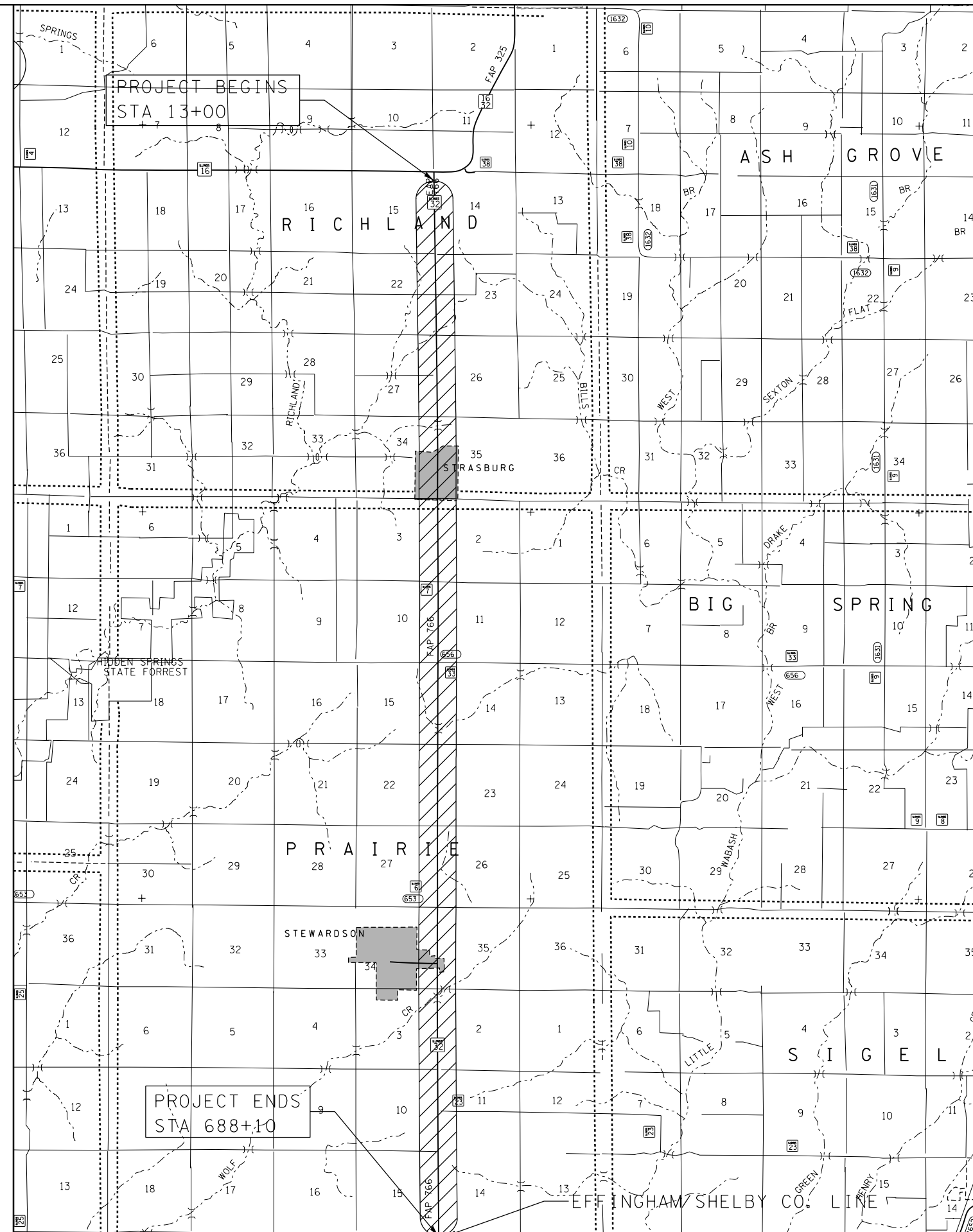
**TYPICALS**

SCALE: SHEET OF SHEETS STA. TO STA.

F.A.P. RTE.	SECTION	COUNTY	TOTAL SHEETS	SHEET NO.
766	(105,106) PVMT PRSV	SHELBY	5	4
CONTRACT NO. 74953			ILLINOIS FED. AID PROJECT	

SCHEDULE OF QUANTITIES										
STATION TO STATION		LENGTH (FOOT)	WIDTH (FOOT)	BUMP REMOVAL	CAPE SEAL, TYPE II	SHORT TERM PAVEMENT MARKING	TEMPORARY PAVEMENT MARKING LINE, 4"	PAINT PAVEMENT MARKING LINE, 4"	RAISED REFLECTIVE PAVEMENT MARKER	RAISED REFLECTIVE PAVEMENT MARKER REMOVAL
				40400020 (EACH)	40500061 (SQ YD)	70300100 (FOOT)	70300220 (FOOT)	78001110 (FOOT)	78100100 (EACH)	78300200 (EACH)
13+00.00	TO 494+50.00	48150.0	26.0	91	139100.0	23440.0	106288.5	106288.5	602	602
494+50.00	TO 502+15.00	765.0	26.0	1	2210.0	382.5	2486.3	2486.3	10	10
502+15.00	TO 505+90.00	375.0	26.0	1	1083.3	187.5	843.8	843.8	5	5
505+90.00	TO 513+35.00	745.0	26.0	1	2152.2	310.5	2297.3	2297.3	9	9
513+35.00	TO 688+10.00	17475.0	26.0	33	50483.3	8492.0	38877.8	38877.8	218	218
TOTALS				127	195029	32813	150794	150794	844	844

STATION	OFFSET FOOT	PROTECTING OR RESETTING SURVEY MARKERS	SURVEY MARKER VAULT
		Z0049799 EACH	Z0070202 EACH
26+49	0.4 LT	1	
53+07	7.2 RT	1	
159+23	6.9 RT	1	
185+73	2.0 RT	1	
212+21	6.6 LT	1	
265+26	4.2 LT	1	
291+70	0.8 LT	1	
318+14	1.4 RT	1	
344+53	0.3 LT	1	
423+70	0.0	1	1
423+70	2.8 RT	1	
450+13	0.5 RT	1	1
476+59	5.3 RT	1	
502+97	2.7 RT	1	
529+28	0.0	1	
529+28	14.5 RT	1	
634+22	0.4 LT	1	
TOTALS		17	2



FILE NAME =	USER NAME = steffennk	DESIGNED -	REVISED -
pw:\planroom.dot\illinois.gov\PIWIDOT\Documents\IDOT Offices\District 7\Projects\74953\DRAWN\CADsheets\0774953-shr-schedule.dwg		CHECKED -	REVISED -
Default	PLOT SCALE = 100.0000' / in.	DATE -	REVISED -
	PLOT DATE = 12/5/2019		

STATE OF ILLINOIS  
DEPARTMENT OF TRANSPORTATION

SCHEDULES &  
LOCATION MAP

SCALE: SHEET OF SHEETS STA. TO STA.

F.A.P. RTE.	SECTION	COUNTY	TOTAL SHEETS	SHEET NO.
766	(105,106) PVMT PRSV	SHELBY	5	5
CONTRACT NO. 74953				
ILLINOIS FED. AID PROJECT				