

092

03-06-2020 LETTING ITEM 092

STATE OF ILLINOIS
DEPARTMENT OF TRANSPORTATION

F.A.P. RTE.	SECTION	COUNTY	TOTAL SHEETS	SHEET NO.
789	56RS-3	MADISON	8	1
ILLINOIS			CONTRACT NO. 76N11	

D-98-037-20

FOR INDEX OF SHEETS, SEE SHEET NO. 2

PROPOSED HIGHWAY PLANS

FAP ROUTE 789 (IL 143)
SECTION 56RS-3
PROJECT STP-TJFY(216)
RESURFACING – SMART FROM E. SCHWARZ TO
0.1 MILES WEST OF GOVERNOR'S PARKWAY
MADISON COUNTY

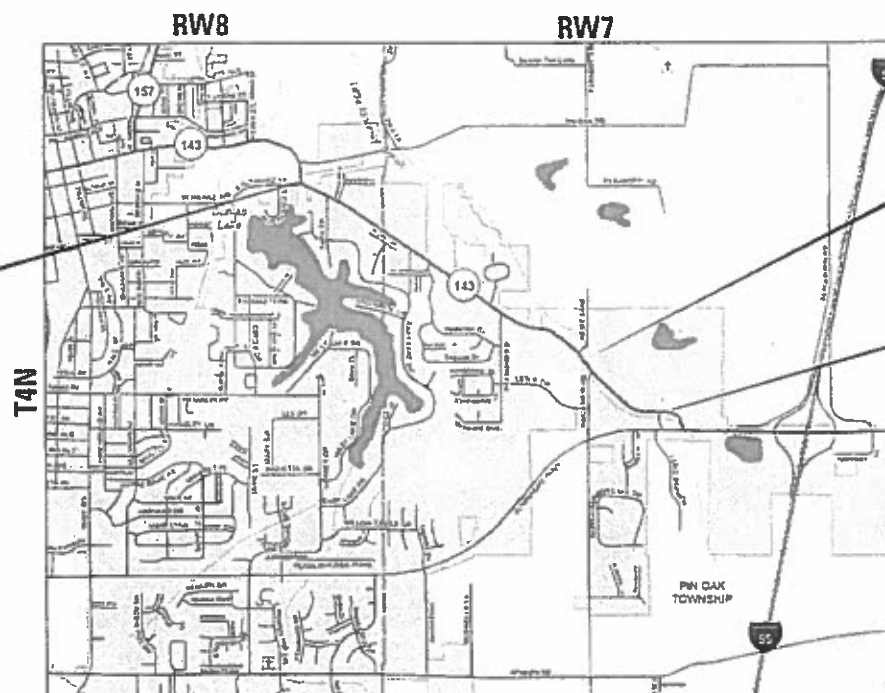
C-98-051-20



TRAFFIC DATA

FUNCTIONAL CLASSIFICATION: MINOR ARTERIAL

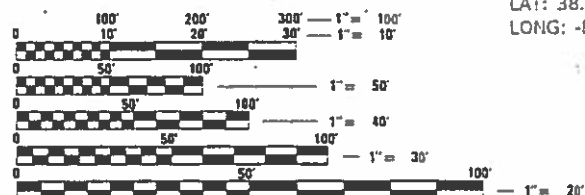
2017 ADT (ACTUAL): 5750
2019 ADT (ESTIMATED): 6000
2039 ADT (ESTIMATED): 8100
SU: 9.1%
MU: 2.3%



BEGIN IMPROVEMENT
STA. 0+00
LAT: 38.810920°N
LONG: -89.934557°W

BRIDGE OMISSION
SN 060-0147
STA. 70+07.71 TO
STA. 70+83.71
SEE SHEET 12

END IMPROVEMENT
STA. 96+98.19
LAT: 38.796904°N
LONG: -89.906315°W



FULL SIZE PLANS HAVE BEEN PREPARED USING STANDARD ENGINEERING SCALES. REDUCED SIZED PLANS WILL NOT CONFORM TO STANDARD SCALES. IN MAKING MEASUREMENTS ON REDUCED PLANS, THE ABOVE SCALES MAY BE USED.

J.U.L.I.E.
JOINT UTILITY LOCATION INFORMATION FOR EXCAVATORS
1-800-892-0123
OR 811



GROSS LENGTH = 9,698 FT. = 1.837 MILE
NET LENGTH = 9,622 FT. = 1.822 MILE

PROJECT ENGINEER TIM PADGETT 618-346-3325
PROJECT MANAGER PHILIP COPPERNOLL 618-346-3181

CONTRACT NO. 76N11

STATE OF ILLINOIS
DEPARTMENT OF TRANSPORTATION

SUBMITTED Dec 2, 2019
Kaith Roberts REGIONAL ENGINEER

Jan 31, 2020 E.A. ETS
ENGINEER OF DESIGN AND ENVIRONMENT

Jan 31, 2020 James J. [Signature] DIRECTOR OF HIGHWAYS PROJECT IMPLEMENTATION

PRINTED BY THE AUTHORITY
OF THE STATE OF ILLINOIS

INDEX OF SHEETS

- 1 COVER SHEET
- 2 INDEX OF SHEETS, HIGHWAY STANDARDS, GENERAL NOTES, COMMITMENTS
- 3 SUMMARY OF QUANTITIES
- 4-5 TYPICAL SECTIONS
- 6-7 SCHEDULE OF QUANTITIES
- 8 LOCATION MAP

HIGHWAY STANDARDS

- 000001-07 STANDARD SYMBOLS, ABBREVIATIONS AND PATTERNS
- 001006 DECIMAL OF AN INCH AND OF A FOOT
- 420001-09 PAVEMENT JOINTS
- 442201-03 CLASS C AND D PATCHES
- 701201-05 LANE CLOSURE, 2L, 2W, DAY ONLY
- 701301-04 LANE CLOSURE, 2L, 2W, SHORT TIME OPERATIONS
- 701306-04 LANE CLOSURE, 2L, 2W, SLOW MOVING OPERATIONS DAY ONLY, FOR SPEEDS >= 45 MPH
- 701311-03 LANE CLOSURE, 2L, 2W MOVING OPERATIONS-DAY ONLY
- 701336-07 LANE CLOSURE, 2L, 2W, WORK AREAS IN SERIES, FOR SPEEDS >= 45 MPH
- 701502-09 URBAN LANE CLOSURE, 2L, 2W WITH BIDIRECTIONAL LEFT TURN LANE
- 701901-08 TRAFFIC CONTROL DEVICES
- 780001-05 TYPICAL PAVEMENT MARKINGS
- 781001-04 TYPICAL APPLICATIONS RAISED REFLECTIVE PAVEMENT MARKERS

GENERAL NOTES

- ① ILLINOIS STATE LAW REQUIRES A 48-HOUR NOTICE TO BE GIVEN TO ALL UTILITIES WITHIN THE PROJECT AREA BEFORE DIGGING. FIELD MARKING OF FACILITIES MAY BE OBTAINED BY CONTACTING J.U.L.I.E. (1-800-892-0123 OR 811) OR FOR NON-MEMBERS, THE UTILITY COMPANY DIRECTLY.
- ② THE CONTRACTOR AND THE ENGINEER SHALL BE AWARE THAT NO SURVEY WAS PERFORMED FOR THIS PROJECT. THE STATIONING, TOPOGRAPHY, AND QUANTITIES SHOWN IN THE PLANS WERE CREATED USING MICROFILM AND FIELD MEASUREMENTS. ALL SHALL BE ASSUMED TO BE APPROXIMATE. THE CONTRACTOR SHALL VERIFY DIMENSIONS AND CONDITIONS IN THE FIELD PRIOR TO CONSTRUCTION AND ORDERING OF MATERIALS.
- ③ THE THICKNESS OF HOT-MIX ASPHALT SURFACE MIXTURES SHOWN ON THE PLANS IS THE NOMINAL THICKNESS. DEVIATIONS MAY OCCUR DUE TO IRREGULARITIES IN THE EXISTING SURFACE OR BASE ON WHICH THE BITUMINOUS MIXTURE IS PLACED.
- ④ AN ESTIMATED QUANTITY OF 2,375 TONS OF CUTTINGS FROM HMA REMOVAL IS ANTICIPATED.
- ⑤ THE PROPOSED PAVEMENT MARKINGS SHALL MATCH THE LOCATIONS OF THE EXISTING PAVEMENT MARKINGS, AS DIRECTED BY THE ENGINEER.
- ⑥ THE MATERIAL TRANSFER DEVICE CAN CROSS IN AN UNLOADED CONDITION ON ALL STRUCTURES WITHIN THE PROJECT LIMITS.
- ⑦ THE CONTRACTOR SHALL PROVIDE POSITIVE AND ADEQUATE DRAINAGE AT ALL TIMES. SEE ALSO SPECIAL PROVISIONS "HOT-MIX ASPHALT SURFACE REMOVAL WITH SKETCH OR ILLINOIS STANDARD W8-I107".
- ⑧ TWO CHANGEABLE MESSAGE SIGNS SHALL BE PLACED 14 DAYS IN ADVANCE OF CONSTRUCTION. EXACT LOCATION OF CHANGEABLE MESSAGE SIGNS SHALL BE DETERMINED BY THE ENGINEER.
- ⑨ THE DEPARTMENT STRONGLY ENCOURAGES THE PRIME CONTRACTOR AND THEIR APPROVED SUB-CONTRACTORS TO HIRE MINORITY, WOMEN AND DISADVANTAGED INDIVIDUALS FROM ITS FEDERALLY FUNDED HIGHWAY CONSTRUCTION CAREERS TRAINING PROGRAM (HCCTP) TO HELP MEET WORKFORCE AND TRAINEE GOALS. THIS PROGRAM IS TRAINING MINORITIES, WOMEN AND DISADVANTAGED INDIVIDUALS IN HIGHWAY CONSTRUCTION-RELATED SKILLS, E.G., MATH FOR THE TRADES, JOB READINESS, TECHNICAL SKILLS IN COURSEWORK (CARPENTRY, CONCRETE FLATWORK, BLUEPRINT READING, SITE PLANS, SITE WORK, TOOLS USE, ETC.) AND OSHA 10 HOUR CERTIFICATION, TO PREPARE THEM FOR A CAREER IN THE HIGHWAY CONSTRUCTION TRADES. GRADUATES ARE WELL-TRAINED AND READY TO BECOME PRODUCTIVE ENTRY-LEVEL CONSTRUCTION WORKERS. CONTACT THE DISTRICT 8 EEO OFFICE AT 618-346-3360 AND/OR THE HCCTP COORDINATOR AT 618-874-6528 TO LEARN MORE ABOUT THE PROGRAM AND FOR ASSISTANCE IN METTING WORKFORCE AND TRAINEE GOALS.
- ⑩ MILLING SHALL TRANSITION FROM 1½" TO 2" OVER 50' BEGINNING AT STATION 94+18.19. COST INCLUDED WITH HOT-MIX ASPHALT SURFACE REMOVAL, 1½".

GENERAL NOTES CONTINUED

- ⑩ TEMPORARY RAMPS SHALL BE CONSTRUCTED IN ACCORDANCE WITH ART 406.08(a), EXCEPT AT SIDEROADS WHERE THE TEMPORARY RAMPS SHALL BE 2 FEET LONG.
- ⑪ THE MIXTURE REQUIREMENTS ARE AS FOLLOWS:

ROUTE	FAP 789 (IL 143)
SECTION	56RS-3
COUNTY	MADISON
CONTRACT	76N11

DESCRIPTION:	SMART - RESURFACING FROM SCHWARZ DRIVE TO 0.1 MILES WEST OF GOVERNOR'S PARKWAY
--------------	--

ADT (Construction Yr)	5700
MU%	2.52
SU%	10.19
20 YR. ESAL'S:	1.63

MIXTURE USE	SURFACE			
AC/PG	PG 64-22			
RAP % (MAX)	SEE SPECIAL PROVISION			
DESIGN AIR VOIDS	4.0% @ Ndes=70			
MIX COMPOSITION (Gradation)	IL 9.5			
FRICITION AGG	MIXTURE "D"			
QUALITY MGMT PROGRAM	QCP			

MIXTURE USE	PATCHING			
AC/PG	PG 64-22			
RAP % (MAX)	SEE SPECIAL PROVISION			
DESIGN AIR VOIDS	4.0% @ Ndes=70			
MIX COMPOSITION (Gradation)	IL 19.0			
FRICITION AGG	MIXTURE "B"			
QUALITY MGMT PROGRAM	QC/QA			

Plan quantities for Bituminous Concrete Surface Course items are calculated using a unit weight of 112 lb/sq yd/in (59.8 kg/sq m/25 mm thickness).

COMMITMENTS

NONE

MODEL: Default
 FILE: Model: P:\pub\baronm.dwg
 PROJECT: D:\projects\DOT\Documents\DOT - Offices\District 8\Projects\DOT\76N11\CADD\DATA\CAD\Sheet\0776N11-1-1-1.dwg
 DATE: 12/9/2019 10:00:00 AM

USER NAME = coppemalpe	DESIGNED -	REVISED -
	DRAWN -	REVISED -
PLOT SCALE = 100.0000' / in.	CHECKED -	REVISED -
PLOT DATE = 12/9/2019	DATE -	REVISED -

**STATE OF ILLINOIS
DEPARTMENT OF TRANSPORTATION**

**INDEX OF SHEETS, HIGHWAY STANDARDS, GENERAL NOTES
COMMITMENTS, MIX TABLE**

SCALE: SHEET 1 OF 1 SHEETS STA. TO STA.

F.A.P. RTE.	SECTION	COUNTY	TOTAL SHEETS	SHEET NO.
789	56RS-3	MADISON	8	2
CONTRACT NO. 76N11				
			ILLINOIS	FED. AID PROJECT

CODE NO.	ITEM	UNIT	TOTAL QUANTITY	CONSTR. CODE	
				80% FED 20% STATE	
				ROADWAY	URBAN
40600290	BITUMINOUS MATERIALS (TACK COAT)	POUND	12639	12639	
40600982	HOT-MIX ASPHALT SURFACE REMOVAL - BUTT JOINT	SQ YD	127	127	
40600990	TEMPORARY RAMP	SQ YD	213	213	
40604062	HOT-MIX ASPHALT SURFACE COURSE, 1L-9.5, MIX "D", N70	TON	2375	2375	
44000155	HOT-MIX ASPHALT SURFACE REMOVAL, 1 1/2"	SQ YD	27347	27347	
44000157	HOT-MIX ASPHALT SURFACE REMOVAL, 2"	SQ YD	614	614	
44200156	PAVEMENT PATCHING, TYPE II, 13 INCH	SQ YD	83	83	
44200162	PAVEMENT PATCHING, TYPE IV, 13 INCH	SQ YD	51	51	
67100100	MOBILIZATION	L SUM	1	1	
70100450	TRAFFIC CONTROL AND PROTECTION, STANDARD 701201	L SUM	1	1	
70100600	TRAFFIC CONTROL AND PROTECTION, STANDARD 701336	L SUM	1	1	
70102622	TRAFFIC CONTROL AND PROTECTION, STANDARD 701502	L SUM	1	1	
70107025	CHANGEABLE MESSAGE SIGN	CAL DA	28	28	
70300100	SHORT TERM PAVEMENT MARKING	FOOT	31941	31941	

CODE NO.	ITEM	UNIT	TOTAL QUANTITY	CONSTR. CODE	
				80% FED 20% STATE	
				ROADWAY	URBAN
70300150	SHORT TERM PAVEMENT MARKING REMOVAL	SQ FT	10647	10647	
70300210	TEMPORARY PAVEMENT MARKING LETTERS AND SYMBOLS	SQ FT	32	32	
70300220	TEMPORARY PAVEMENT MARKING - LINE 4"	FOOT	31941	31941	
70300260	TEMPORARY PAVEMENT MARKING - LINE 12"	FOOT	87	87	
* 78000100	THERMOPLASTIC PAVEMENT MARKING - LETTERS AND SYMBOLS	SQ FT	32	32	
* 78000200	THERMOPLASTIC PAVEMENT MARKING - LINE 4"	FOOT	31941	31941	
* 78000600	THERMOPLASTIC PAVEMENT MARKING - LINE 12"	FOOT	87	87	
* 78100100	RAISED REFLECTIVE PAVEMENT MARKER	EACH	206	206	
78300200	RAISED REFLECTIVE PAVEMENT MARKER REMOVAL	EACH	206	206	
X7030005	TEMPORARY PAVEMENT MARKING REMOVAL	SQ FT	10766	10766	
Z0033700	LONGITUDINAL JOINT SEALANT	FOOT	10100	10100	
Z0034105	MATERIAL TRANSFER DEVICE	TON	2375	2375	

* SPECIALTY ITEM

MODEL: Default
 FILE: \\nrcs-pix\pub\room\dat\illinois.gov\PI\DOT\Documents\DOT_Offices\Dir\ctc @projects\076N11\CADD\DATA\CAD\Inres\076N11-1st-500.dgn

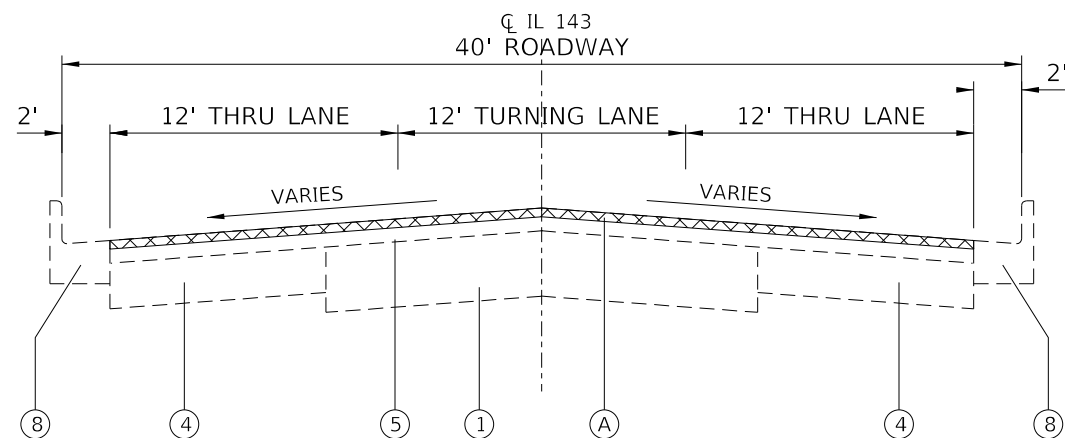
USER NAME = coppemllpe	DESIGNED -	REVISED -
	DRAWN -	REVISED -
PLOT SCALE = 100.0000' / in.	CHECKED -	REVISED -
PLOT DATE = 12/9/2019	DATE -	REVISED -

**STATE OF ILLINOIS
DEPARTMENT OF TRANSPORTATION**

SUMMARY OF QUANTITIES

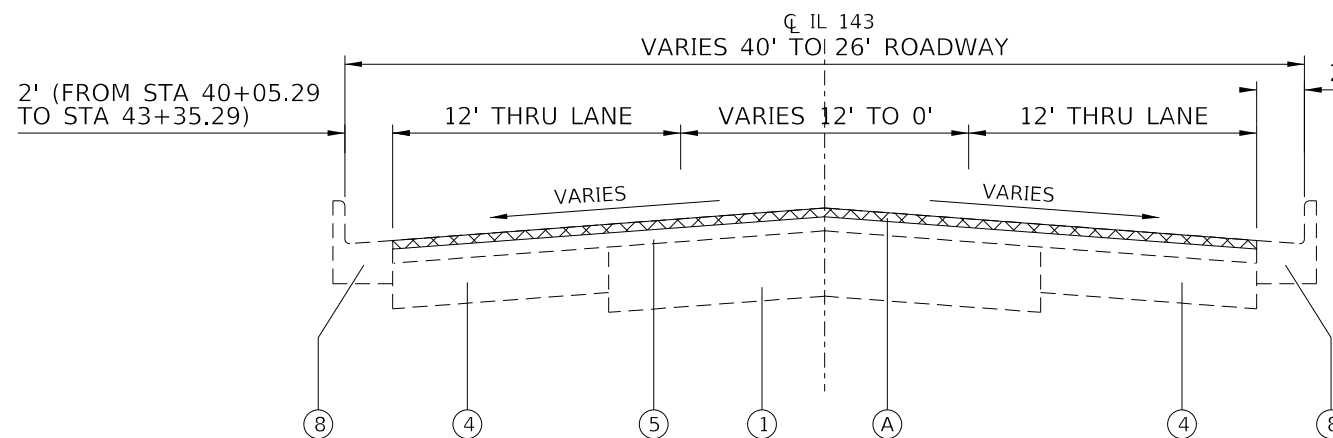
SCALE: SHEET 1 OF 1 SHEETS STA. TO STA.

F.A.P RTE.	SECTION	COUNTY	TOTAL SHEETS	SHEET NO.
789	56RS-3	MADISON	8	3
CONTRACT NO. 76N11			ILLINOIS FED. AID PROJECT	



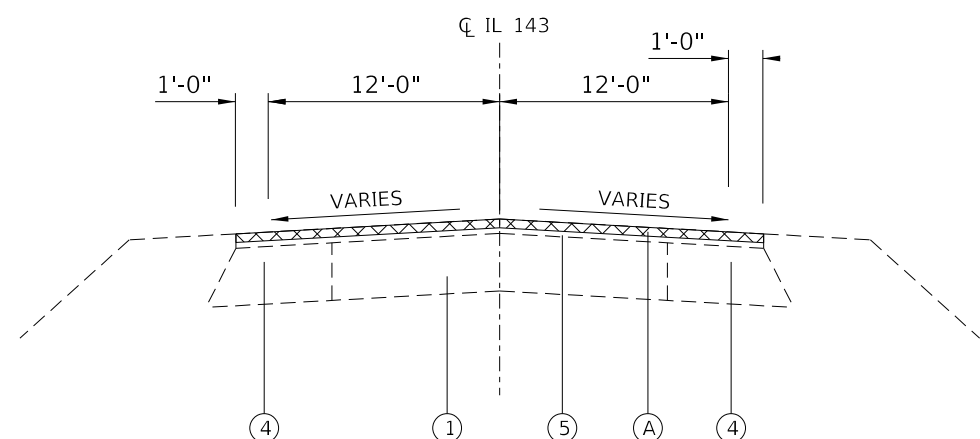
EXISTING TYPICAL SECTION

STA. 0+00 TO STA 1+78



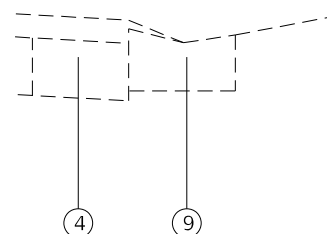
EXISTING TYPICAL SECTION

STA. 1+78 TO STA 4+78

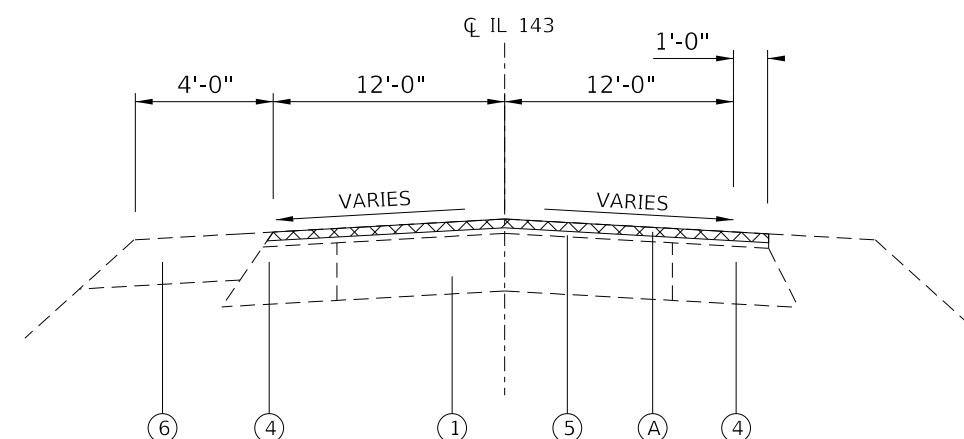
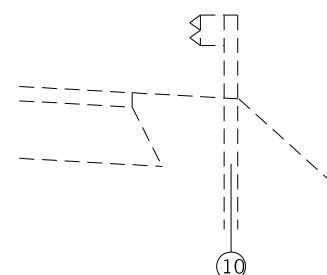


EXISTING TYPICAL SECTION

STA. 4+78 TO STA. 91+13.19

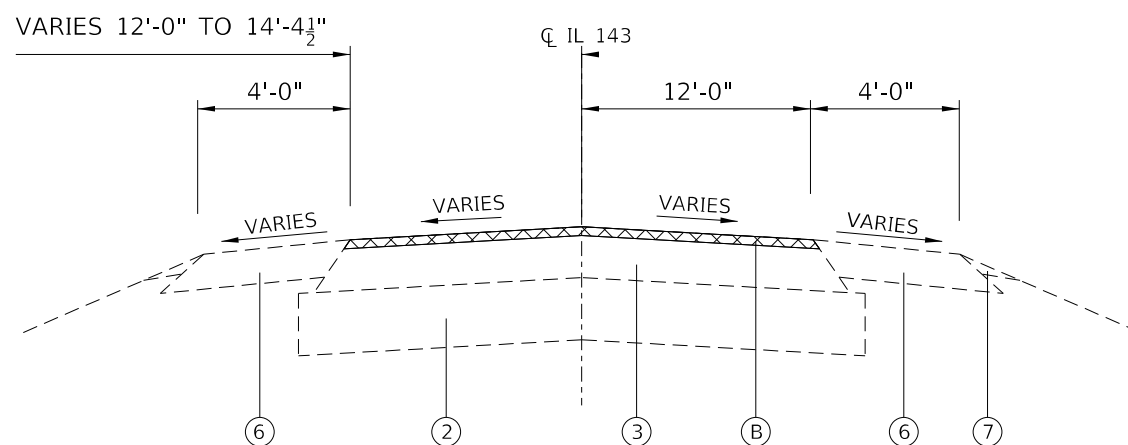


STA. 45+37.35 TO STA. 47+93.75 RIGHT
 STA. 94+72.08 TO STA. 100+41.78 LEFT
 STA. 102+0.23 TO STA. 103+51.78 RIGHT



EXISTING TYPICAL SECTION

STA. 91+13.19 TO STA. 94+68.19



EXISTING TYPICAL SECTION

STA. 94+68.19 TO STA. 96+98.19

LEGEND

- ① EXISTING PAVEMENT, 9"
- ② EXISTING LIME MODIFIED SOIL, 12"
- ③ EXISTING FULL-DEPTH HOT-MIX ASPHALT PAVEMENT, 10"
- ④ EXISTING HOT-MIX ASPHALT WIDENING, 9"
- ⑤ EXISTING HOT-MIX ASPHALT RESURFACING, VARIES
- ⑥ EXISTING HOT-MIX ASPHALT SHOULDERS, 8"
- ⑦ EXISTING AGGREGATE SHOULDER, TYPE B
- ⑧ EXISTING COMBINATION CONCRETE CURB AND GUTTER, TYPE B 6.24
- ⑨ EXISTING CONCRETE GUTTER, TYPE B
- ⑩ EXISTING GUARDRAIL
- (A) PROPOSED HOT-MIX ASPHALT SURFACE REMOVAL, 1.5"
- (B) PROPOSED HOT-MIX ASPHALT SURFACE REMOVAL, 2"
- (C) PROPOSED BITUMINOUS MATERIALS (TACK COAT)
- (D) PROPOSED LONGITUDINAL JOINT SEALANT
- (E) PROPOSED HOT-MIX ASPHALT SURFACE COURSE, MIX "D", 1.5"
- (F) PROPOSED HOT-MIX ASPHALT SURFACE COURSE, MIX "D", 2"
- (G) PROPOSED PAVEMENT MARKING

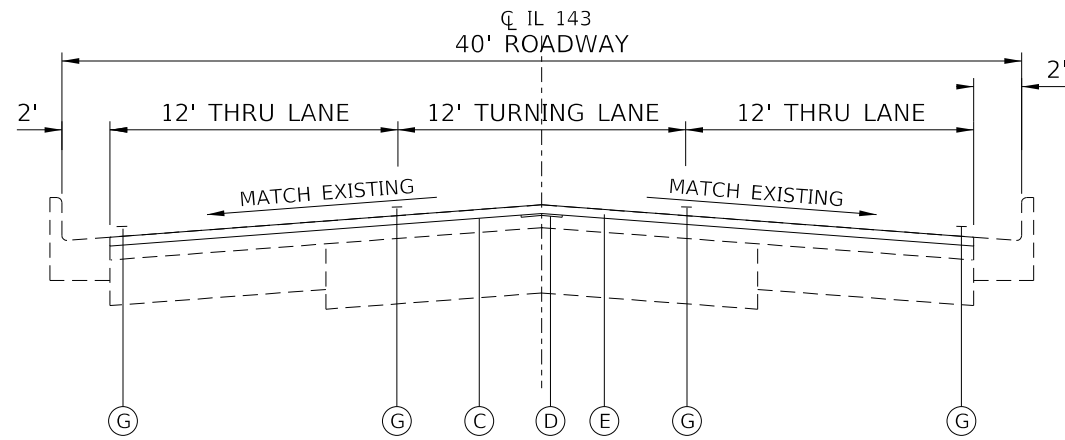
**STATE OF ILLINOIS
 DEPARTMENT OF TRANSPORTATION**

TYPICAL SECTIONS

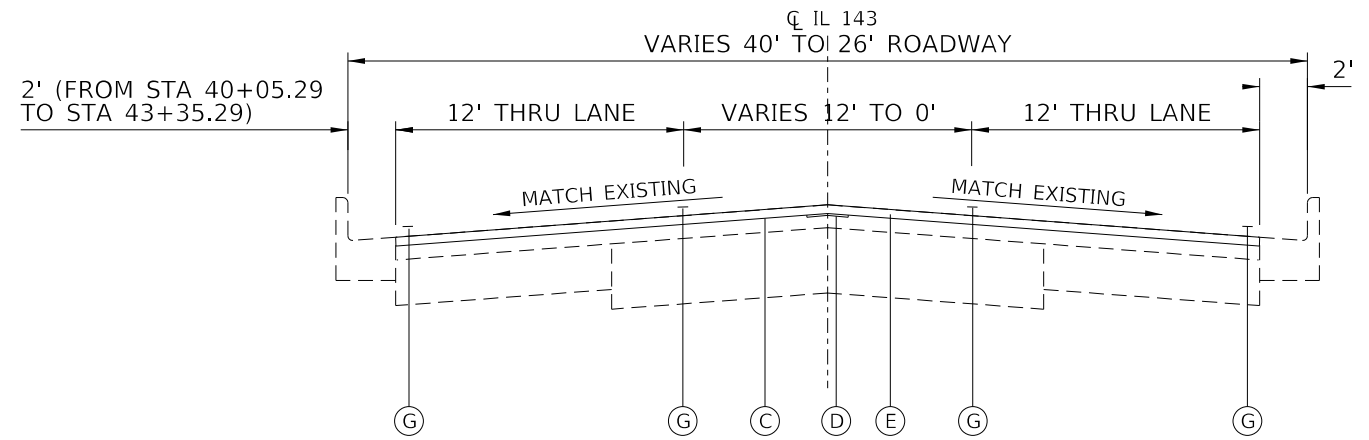
SCALE: SHEET 1 OF 2 SHEETS STA. TO STA.

F.A.P. RTE.	SECTION	COUNTY	TOTAL SHEETS	SHEET NO.
789	56RS-3	MADISON	8	4
CONTRACT NO. 76N11				
ILLINOIS FED. AID PROJECT				

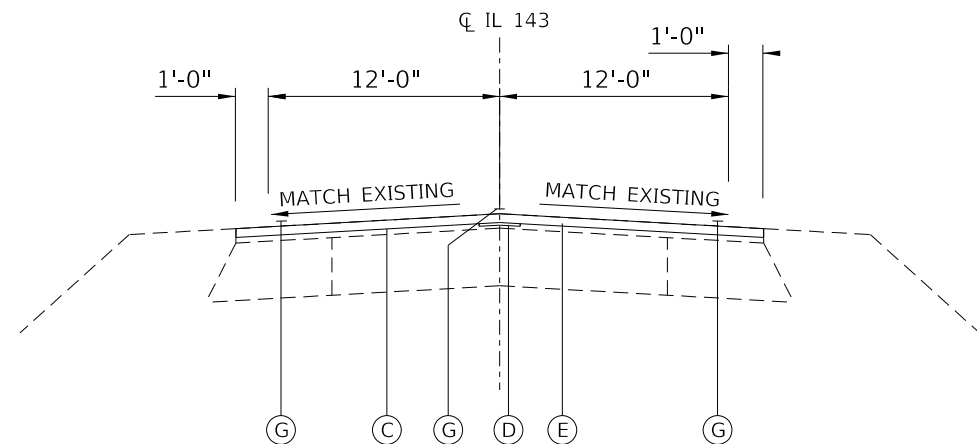
MODEL: Default
 FILE: \\nrcs-pix\pub\anr\room.d\at\illinois.gov\PI\DOT\Documents\DOT_Offices\Dir\et\ @\Projects\0676N11\CADD\Drawings\0676N11-51c\typical.dgn



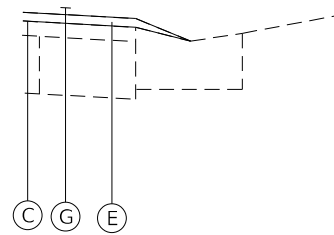
PROPOSED TYPICAL SECTION
STA. 0+00 TO STA 1+78



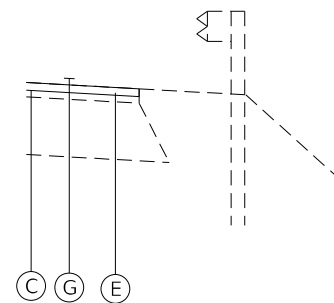
PROPOSED TYPICAL SECTION
STA 1+78 TO STA 4+78



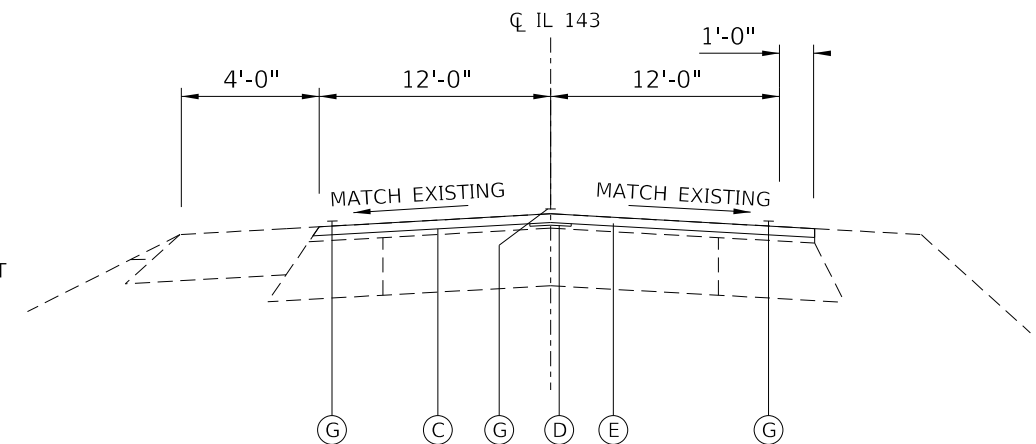
PROPOSED TYPICAL SECTION
STA. 4+78 TO STA. 91+13.19



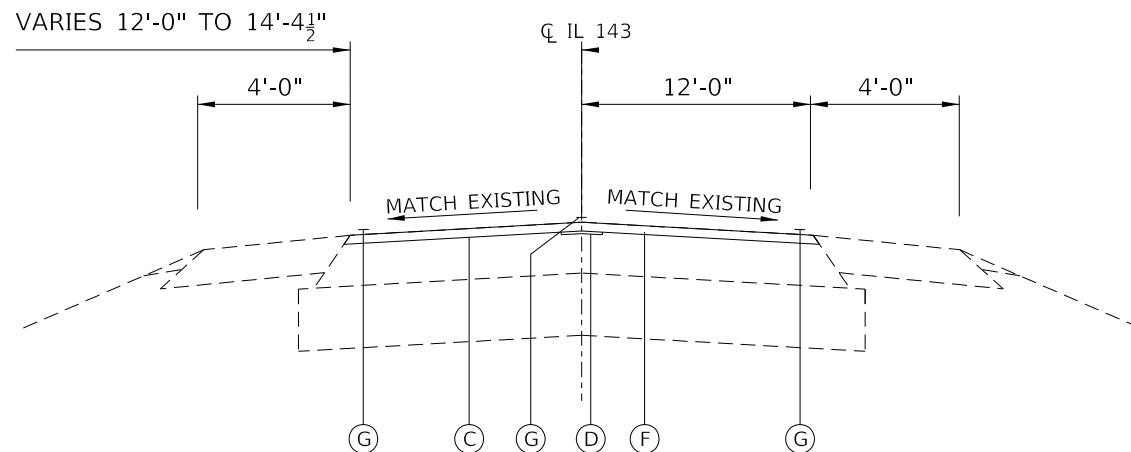
STA. 45+37.35 TO STA. 47+93.75 RIGHT
STA. 94+72.08 TO STA. 100+41.78 LEFT
STA. 102+0.23 TO STA. 103+51.78 RIGHT



STA. 58+27.31 TO STA. 61+58.58 RIGHT
STA. 65+21.93 TO STA. 67+18.80 RIGHT
STA. 65+21.93 TO STA. 66+80.39 LEFT
SAT. 67+72.37 TO STA. 72+83.65 LEFT
STA. 69+04.21 TO STA. 72+83.65 RIGHT
STA. 75+78.13 TO STA. 79+52.65 RIGHT
STA. 89+27.47 TO STA. 91+99.69 RIGHT
STA. 93+89.97 TO STA. 95+99.95 RIGHT



PROPOSED TYPICAL SECTION
STA. 91+13.19 TO STA. 94+68.19



PROPOSED TYPICAL SECTION
STA. 94+68.19 TO STA. 96+98.19

LEGEND

- ① EXISTING PAVEMENT, 9"
- ② EXISTING LIME MODIFIED SOIL, 12"
- ③ EXISTING FULL-DEPTH HOT-MIX ASPHALT PAVEMENT, 10"
- ④ EXISTING HOT-MIX ASPHALT WIDENING, 9"
- ⑤ EXISTING HOT-MIX ASPHALT RESURFACING, VARIES
- ⑥ EXISTING HOT-MIX ASPHALT SHOULDERS, 8"
- ⑦ EXISTING AGGREGATE SHOULDER, TYPE B
- ⑧ EXISTING COMBINATION CONCRETE CURB AND GUTTER, TYPE B 6.24
- ⑨ EXISTING CONCRETE GUTTER, TYPE B
- ⑩ EXISTING GUARDRAIL
- (A) PROPOSED HOT-MIX ASPHALT SURFACE REMOVAL, 1.5"
- (B) PROPOSED HOT-MIX ASPHALT SURFACE REMOVAL, 2"
- (C) PROPOSED BITUMINOUS MATERIALS (TACK COAT)
- (D) PROPOSED LONGITUDINAL JOINT SEALANT
- (E) PROPOSED HOT-MIX ASPHALT SURFACE COURSE, MIX "D", 1.5"
- (F) PROPOSED HOT-MIX ASPHALT SURFACE COURSE, MIX "D", 2"
- (G) PROPOSED PAVEMENT MARKING

**STATE OF ILLINOIS
DEPARTMENT OF TRANSPORTATION**

TYPICAL SECTIONS

SCALE: SHEET 2 OF 2 SHEETS STA. TO STA.

F.A.P RTE.	SECTION	COUNTY	TOTAL SHEETS	SHEET NO.
789	56RS-3	MADISON	8	5
				CONTRACT NO. 76N11
ILLINOIS FED. AID PROJECT				

MODEL: Default
 FILE: \\nrcs-pix\pub\haronom.dwg
 PROJECT: \\nrcs-pix\pub\haronom.dwg
 PLOT DATE: 12/9/2019

PAVEMENT MARKING SCHEDULE												
LOCATION			LENGTH FOOT	THERMOPLASTIC PAVEMENT MARKING					TEMPORARY PAVEMENT MARKING REMOVAL SQ FT	SHORT TERM PAVEMENT MARKING FOOT	SHORT TERM PAVEMENT MARKING REMOVAL SQ FT	
				4" YELLOW SKIP DASH FOOT	4" YELLOW SOLID FOOT	4" WHITE SOLID FOOT	12" YELLOW DIAGONAL FOOT	LETTERS & SYMBOLS SQ FT				
STA	TO	STA										
IL 143												
0+00.00	TO	0+09.00	9		50	9	9		29	59	20	
0+09.00	TO	0+68.00	59			59			20	59	20	
0+68.00	TO	0+84.00	16			32			11	32	11	
0+84.00	TO	1+88.00	104		208	312		32	205	520	173	
1+88.00	TO	5+08.00	320		1280	640	63		703	1920	640	
5+08.00	TO	6+30.00	122	31	122	244			132	397	132	
6+30.00	TO	7+11.00	81	20	81	81			61	182	61	
7+11.00	TO	9+14.00	203	51	203	406			220	660	220	
9+14.00	TO	9+72.00	58	15	58				24	73	24	
9+72.00	TO	12+86.00	314	79	314	628			340	1021	340	
12+86.00	TO	20+68.00	782	196		1564			587	1760	587	
20+68.00	TO	21+36.00	68	17		68			28	85	28	
21+36.00	TO	28+44.00	708	177		1416			531	1593	531	
28+44.00	TO	29+04.00	60	15		60			25	75	25	
29+04.00	TO	33+42.00	438	110		876			329	986	329	
33+42.00	TO	34+49.00	107	27		107			45	134	45	
34+49.00	TO	42+15.00	766	192		1532			575	1724	575	
42+15.00	TO	49+61.00	746	187	746	1492			808	2425	808	
49+61.00	TO	50+68.00	107	27	107	107			80	241	80	
50+68.00	TO	52+96.00	228	57	228	456			247	741	247	
52+96.00	TO	53+79.00	83	21	83	83			62	187	62	
53+79.00	TO	54+15.00	36	9	36	72			39	117	39	
54+15.00	TO	70+07.71	1593		3185	3185			2124	6371	2124	
70+07.71	TO	78+20.00	736		1473	1473			982	2945	982	
78+20.00	TO	79+37.00	117		234	117			117	351	117	
79+37.00	TO	95+79.00	1642		3284	3284			2189	6568	2189	
95+79.00	TO	96+98.19	119		477	238	15		253	715	238	
SUBTOTAL					1231	12169	18541					
TOTAL						31941		87	32	10766	31941	10647

MAINLINE PAVEMENT SCHEDULE										
LOCATION			BITUMINOUS MATERIALS (TACK COAT)	HMA SURFACE REMOVAL (BUTT JOINTS)	HMA SURFACE COURSE, MIX "D", N70, 1.5"	HMA SURFACE COURSE, MIX "D", N70, 2"	HMA SURFACE REMOVAL, 1 1/2"	HMA SURFACE REMOVAL, 2"	LONGITUDINAL JOINT SEALANT	
STA	TO	STA	POUNDS	SQ YD	TON	TON	SQ YD	SQ YD	FOOT	
IL 143										
0+00.00	TO	0+10.00	18	40	3				20	
0+10.00	TO	1+78.00	302		56		672		336	
1+78.00	TO	4+78.00	450		84		1000		600	
4+78.00	TO	69+97.71	8476		1582		18835		6520	
69+97.71	TO	70+07.71	13	29	2				10	
70+07.71	TO	70+83.71	OMISSION							
70+83.71	TO	70+93.71	13	29	2				10	
70+93.71	TO	92+92.19	2858		533		6351		2198	
92+92.19	TO	94+68.19	220		41		489		176	
94+68.19	TO	96+88.19	276			69		614	220	
96+88.19	TO	96+98.19	13	29		3			10	
TOTAL			12639	127	2303	72	27347	614	10100	

MODEL: Default
 FILE: Model: p:\pub\p\room.dwg
 I:\CADData\CAD\Projects\DOT - Offices\Dir\ctc - B\Projects\076N11\CADData\CAD\Projects\076N11-shc-schedule.dgn

USER NAME = coppemolpe	DESIGNED -	REVISED -
	DRAWN -	REVISED -
PLOT SCALE = 100.0000' / in.	CHECKED -	REVISED -
PLOT DATE = 12/9/2019	DATE -	REVISED -

STATE OF ILLINOIS
DEPARTMENT OF TRANSPORTATION

SCHEDULE OF QUANTITIES

SCALE: SHEET 1 OF 2 SHEETS STA. TO STA.

F.A.P RTE.	SECTION	COUNTY	TOTAL SHEETS	SHEET NO.
789	56RS-3	MADISON	8	6
CONTRACT NO. 76N11				
ILLINOIS FED. AID PROJECT				

RAISED REFLECTIVE PAVEMENT MARKER SCHEDULE							
LOCATION			LENGTH	RAISED REFLECTIVE PAVEMENT MARKER REMOVAL			RAISED REFLECTIVE PAVEMENT MARKER REMOVAL
				ONE WAY AMBER	ONE WAY CRYSTAL	TWO WAY AMBER	
STA	TO	STA	FOOT	EACH	EACH	EACH	EACH
IL 143							
0+00.00	TO	0+09.00	9	3			3
0+09.00	TO	0+84.00	75				
0+84.00	TO	2+13.00	129		3	6	9
2+13.00	TO	4+93.00	280	14			14
4+93.00	TO	6+13.00	120			6	6
6+13.00	TO	52+44.00	4631			58	58
52+44.00	TO	70+07.71	1764			44	44
70+07.71	TO	94+41.19	2357			59	59
94+41.19	TO	95+61.19	120	6			6
95+61.19	TO	96+98.19	137	7			7
SUBTOTAL				30	3	173	
TOTAL					206		206

TEMPORARY RAMP SCHEDULE		
LOCATION		TEMPORARY RAMP
STA.	LT/RT	SQ YD
IL 143		
0+10.00	LT/RT	20
PARK DR	RT	18
ANNIVERSARY LN	LT/RT	12
ELLSWORTH ST	RT	14
ST MARY DR	RT	14
REDWOOD DR	RT	28
RAYMOND RD	RT	27
* 70+07.71	LT/RT	14
* 70+83.71	LT/RT	14
WIESE LN	LT/RT	7
RIDGE VIEW RD	RT	30
* 96+88.19	LT/RT	15
TOTAL		213

*NOTE: LENGTH CALCULATED AS 40:1 PER ARTICLE 406.08(A) OF STANDARD SPECIFICATIONS

PAVEMENT PATCHING					
STATION	LOCATION	LENGTH	WIDTH	13"	
				TYPE II	TYPE IV
EB/WB	FEET	FEET	SQ YD	SQ YD	
IL 143					
37+32.00	EB	8	13	12	
37+32.00	WB	8	13	12	
47+91.00	EB	8	13	12	
47+91.00	WB	8	13	12	
58+57.00	EB	8	13	12	
58+57.00	WB	8	13	12	
79+24.00	WB	100	4		44
SUBTOTAL				72	44
ANTICIPATED FAILURES (15%)				11	7
TOTAL				83	51

MODEL: Default
FILE: h:\m\c:\pic\uplanroom.d\illinois.gov\PWIDOT\Documents\DOT_Offices\Dir\ctc @Projects\076N11\CAD\DATA\CAD\Inches\076N11-shc-schedule.dgn

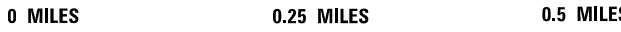
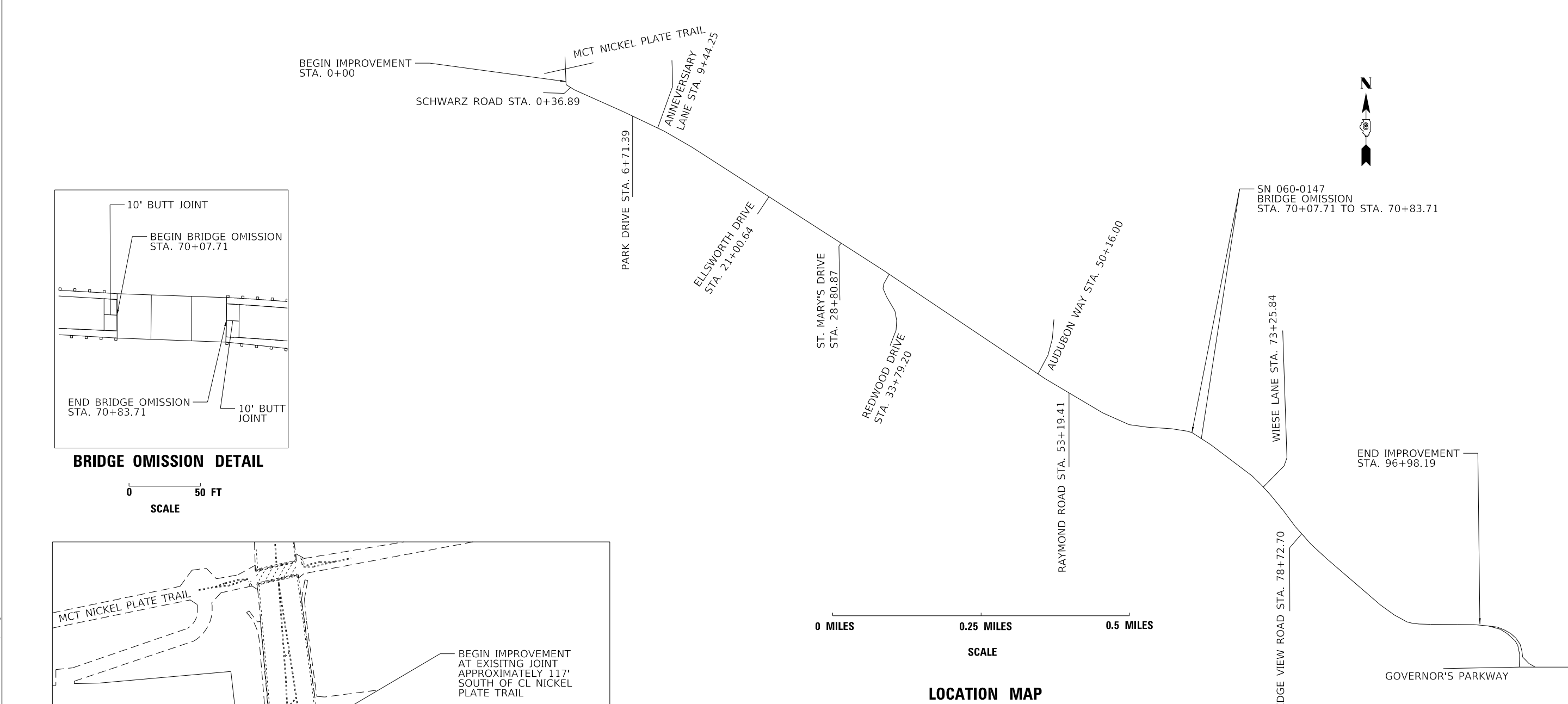
USER NAME = coppemolpe	DESIGNED -	REVISED -
	DRAWN -	REVISED -
PLOT SCALE = 100.0000' / in.	CHECKED -	REVISED -
PLOT DATE = 12/9/2019	DATE -	REVISED -

STATE OF ILLINOIS
DEPARTMENT OF TRANSPORTATION

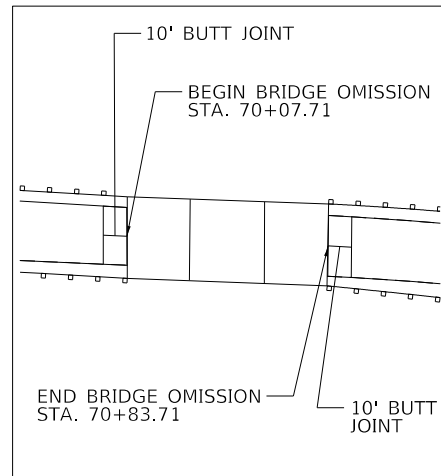
SCHEDULE OF QUANTITIES

SCALE: SHEET 2 OF 2 SHEETS STA. TO STA.

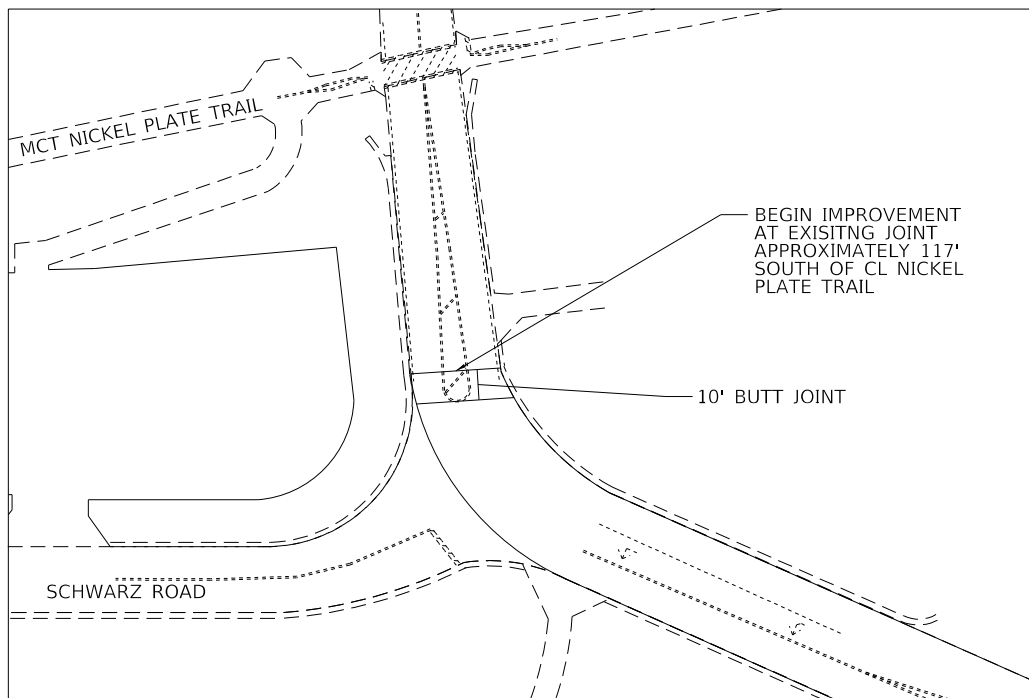
F.A.P RTE.	SECTION	COUNTY	TOTAL SHEETS	SHEET NO.
789	56RS-3	MADISON	8	7
CONTRACT NO. 76N11				
ILLINOIS FED. AID PROJECT				



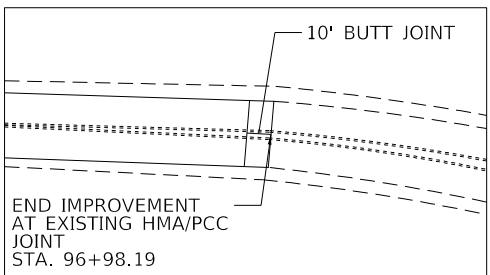
LOCATION MAP



BRIDGE OMISSION DETAIL



BEGINNING OF PROJECT DETAIL



END OF PROJECT DETAIL



MODEL: Default
 FILE: hml1e_pictureroom.dwg
 PROJECTS\DOT_Office\Bartlet Office\Bartlet\11CADData\CAD\hml1e\hml1e.dwg

USER NAME = coppemolpe	DESIGNED -	REVISED -
	DRAWN -	REVISED -
PLOT SCALE = 100,0000' / in.	CHECKED -	REVISED -
PLOT DATE = 12/9/2019	DATE -	REVISED -

STATE OF ILLINOIS
DEPARTMENT OF TRANSPORTATION

LOCATION MAP AND DETAILS

SCALE:	SHEET 1	OF 1	SHEETS	STA.	TO STA.
--------	---------	------	--------	------	---------

F.A.P. RTE.	SECTION	COUNTY	TOTAL SHEETS	SHEET NO.
789	56RS-3	MADISON	8	8
CONTRACT NO. 76N11				
ILLINOIS FED. AID PROJECT				