

STATE OF ILLINOIS
DEPARTMENT OF TRANSPORTATION

F.A.I. SITE	SECTION	COUNTY	TOTAL SHEETS	SHEET NO.
57/70	D7 PATCHING 2020-1	EFFINGHAM	5	1
ILLINOIS			CONTRACT NO. 74929	

D-97-005-20

FOR INDEX OF SHEETS, SEE SHEET NO. 2

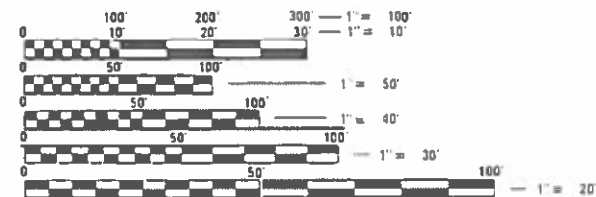
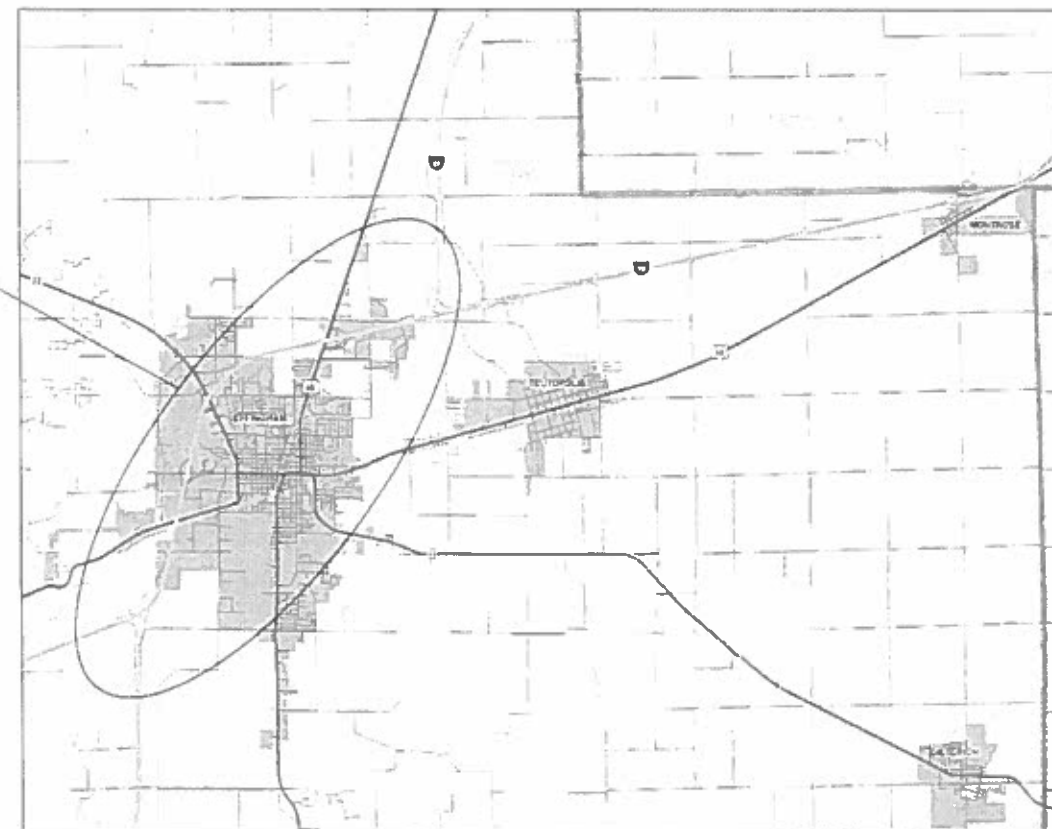
PROPOSED HIGHWAY PLANS

F.A.I. ROUTE 57/70 (I-57 / 70)
SECTION D7 PATCHING
2020-1 PATCHING
EFFINGHAM COUNTY

C-97-005-20



LOCATION OF WORK



FULL SIZE PLANS HAVE BEEN PREPARED USING STANDARD ENGINEERING SCALES. REDUCED SIZED PLANS WILL NOT CONFORM TO STANDARD SCALES. IN MAKING MEASUREMENTS ON REDUCED PLANS, THE ABOVE SCALES MAY BE USED.

J.U.L.I.E.
JOINT UTILITY LOCATION INFORMATION FOR EXCAVATORS
1-800-892-0123
OR 811

PROJECT ENGINEER: TOM RONAN
PROJECT MANAGER: TOM RONAN
PHONE NUMBER: (217) 342-8320
CONTRACT NO. 74929

STATE OF ILLINOIS
DEPARTMENT OF TRANSPORTATION

SUBMITTED DECEMBER 23, 2019

Jeffrey P. Meyer, Esq.
REGIONAL ENGINEER

Jan 31, 2020
E.A. ETK
ENGINEER OF DESIGN AND ENVIRONMENT

Jan 31, 2020
DIRECTOR OF HIGHWAYS / PROJECT IMPLEMENTATION

PRINTED BY THE AUTHORITY
OF THE STATE OF ILLINOIS

INDEX OF SHEETS

<u>SHEET NO.</u>	<u>TITLE</u>
1	COVER SHEET
2	INDEX OF SHEETS, GENERAL NOTES, AND DETECTOR LOOP TABLE
3	SUMMARY OF QUANTITIES
4	SCHEDULE OF QUANTITIES & LOCATION DESCRIPTIONS
5	LOCATION MAP

THE FOLLOWING STANDARDS ARE A PART OF THESE PLANS AND ARE INCLUDED AFTER SHEET NO. 5:

<u>STD. NO.</u>	<u>DESCRIPTION</u>
000001-07	STANDARD SYMBOLS, ABBREVIATIONS AND PATTERNS
001001-02	AREAS OF REINFORCEMENT BARS
001006	DECIMAL OF AN INCH AND A FOOT
420701-03	PAVEMENT WELDED WIRE REINFORCEMENT
421001-03	BAR REINFORCEMENT FOR CONTINUOUSLY REINFORCED CONCRETE PAVEMENT
442001-04	CLASS A PATCHES
442101-09	CLASS B PATCHES
442201-03	CLASS C AND D PATCHES
701101-05	OFF-RD OPERATIONS, MULTILANE, 15' TO 24" FROM PAVEMENT EDGE
701106-02	OFF-RD OPERATIONS, MULTILANE, MORE THAN 15' AWAY
701400-09	APPROACH TO LANE CLOSURE, FREEWAY/EXPRESSWAY
701401-12	LANE CLOSURE, FREEWAY/EXPRESSWAY
701411-09	LANE CLOSURE, MULTILANE, AT ENTRANCE OR EXIT RAMP, FOR SPEEDS > 45 MPH
701428-01	TRAFFIC CONTROL SETUP AND REMOVAL FREEWAY/EXPRESSWAY
701446-10	TWO LANE CLOSURE, FREEWAY/EXPRESSWAY
701456-05	PARTIAL EXIT RAMP CLOSURE FREEWAY/EXPRESSWAY
701602-10	URBAN LANE CLOSURE, MULTILANE, 2W WITH BIDIRECTIONAL LEFT TURN LANE
701701-10	URBAN LANE CLOSURE, MULTILANE INTERSECTION
701901-08	TRAFFIC CONTROL DEVICES
886001-01	DETECTOR LOOP INSTALLATIONS
886006-01	TYPICAL LAYOUTS FOR DETECTION LOOPS

GENERAL NOTES

ALL REINFORCEMENT BARS FOR CLASS A PATCHES SHALL BE #6 BARS.
 THE ACTUAL LOCATIONS OF PAVEMENT PATCHING AND FINAL QUANTITIES SHALL BE DETERMINED BY THE ENGINEER IN THE FIELD.
 AN ESTIMATED QUANTITY OF DETECTOR LOOPS, TYPE I HAS BEEN INCLUDED TO REPLACE ANY DETECTOR LOOPS THAT ARE WITHIN THE LIMITS OF A PATCH.
 THERE SHALL BE NO OPEN HOLES PERMITTED ON THE ROADWAY OUTSIDE OF NORMAL WORKING HOURS.
 IF THE RESIDENT HAS ANY QUESTIONS ABOUT LOCATIONS OR PATCHES THEY SHOULD CONTACT THE MAINTENANCE FIELD ENGINEER, DOUG RUDOLPHI, AT 217-299-4636.

NUMBER OF TURNS REQUIRED
IN DETECTOR LOOPS

<u>6 X 6</u>		<u>LOOP SIZE</u>
		2 TURNS
		3 TURNS
0	545	4 TURNS
546	818	5 TURNS
819	1145	6 TURNS
1146	1527	7 TURNS
1528	1964	8 TURNS
1965	2455	9 TURNS
2456	3000	10 TURNS

THE NUMBERS IN THE TABLE REPRESENT THE LENGTH OF ELECTRIC CABLE FROM THE LOOP TO THE CABINET

HOT-MIX ASPHALT MIX DESIGN	AC/PG	DESIGN AIR	MIXTURE	FRICTION	QUALITY
APPLICATION		VOIDS	COMPOSITION	AGGREGATE	MANAGEMENT
HMA PATCHING, CLASS D (SURFACE LIFT)	SBS PG 70-22	4.0% @ N=90	IL - 9.5	MIXTURE D	QC/QA
HMA PATCHING, CLASS D (BOTTOM LIFTS)	SBS PG 70-22	4.0% @ N=90	IL - 19.0	N/A	QC/QA

MODEL: Default
 FILE: hma1006_01.dwg
 PROJECT: 74929
 DRAWING: 74929-01-01
 SHEET: 1 OF 2
 DATE: 12/23/2019

USER NAME = steffenmk	DESIGNED -	REVISED -
	DRAWN -	REVISED -
PLOT SCALE = 100.0000 ' / in.	CHECKED -	REVISED -
PLOT DATE = 12/23/2019	DATE -	REVISED -

**STATE OF ILLINOIS
DEPARTMENT OF TRANSPORTATION**

**GENERAL NOTES AND
INDEX OF SHEETS**

SCALE: SHEET 1 OF 1 SHEETS STA. TO STA.

F.A.I. RTE.	SECTION	COUNTY	TOTAL SHEETS	SHEET NO.
57/70	D7 PATCHING 2020-1	EFFINGHAM	5	2
ILLINOIS FED. AID PROJECT			CONTRACT NO. 74929	

100%
STATE

100%
STATE

SUMMARY OF QUANTITIES			TOTAL QUANTITIES	CONSTRUCTION TYPE CODE		
CODE NO	ITEM	UNIT		0006 URBAN	0006 RURAL	
44200050	WELDED WIRE REINFORCEMENT	SQ YD	75	32	43	
44200608	CLASS A PATCHES, TYPE I, 13 INCH	SQ YD	5	5		
44200610	CLASS A PATCHES, TYPE II, 13 INCH	SQ YD	45	45		
44200612	CLASS A PATCHES, TYPE III, 13 INCH	SQ YD	16	16		
44200970	CLASS B PATCHES, TYPE II, 10 INCH	SQ YD	234	234		
44200974	CLASS B PATCHES, TYPE III, 10 INCH	SQ YD	32	32		
44201043	CLASS B PATCHES, TYPE II, 16 INCH	SQ YD	59	43	16	
44201047	CLASS B PATCHES, TYPE III, 16 INCH	SQ YD	16		16	
44201048	CLASS B PATCHES, TYPE IV, 16 INCH	SQ YD	27		27	
44201299	DOWEL BARS 1 1/2"	EACH	784	704	80	
44201765	CLASS D PATCHES, TYPE II, 10 INCH	SQ YD	43	43		
44201769	CLASS D PATCHES, TYPE III, 10 INCH	SQ YD	18	18		
44201798	CLASS D PATCHES, TYPE I, 13 INCH	SQ YD	8	8		
44201803	CLASS D PATCHES, TYPE II, 13 INCH	SQ YD	112	112		

SUMMARY OF QUANTITIES			TOTAL QUANTITIES	CONSTRUCTION TYPE CODE		
CODE NO	ITEM	UNIT		0006 URBAN	0006 RURAL	
44213000	PATCHING REINFORCEMENT	SQ YD	65	65		
44213200	SAW CUTS	FOOT	2045	1856	189	
44213204	TIE BARS 3/4"	EACH	37	28	9	
67100100	MOBILIZATION	L SUM	1	0.9	0.1	
70100420	TRAFFIC CONTROL AND PROTECTION, STANDARD 701411	EACH	6	6		
70100800	TRAFFIC CONTROL AND PROTECTION, STANDARD 701401	L SUM	1	0.75	0.25	
70100815	TRAFFIC CONTROL AND PROTECTION, STANDARD 701446	L SUM	1	1		
70100825	TRAFFIC CONTROL AND PROTECTION, STANDARD 701456	L SUM	1	1		
70102632	TRAFFIC CONTROL AND PROTECTION, STANDARD 701602	L SUM	1	1		
70107025	CHANGEABLE MESSAGE SIGN	CAL DA	140	28	112	
* 88600100	DETECTOR LOOP, TYPE I	FOOT	1500	1500		

* SPECIALTY ITEM

MODEL: Default
 FILE: \\bls01c01\pub\baronm.dwg
 PROJECT: 74929\CADD\DATA\CADD\Drawings\DOT Office\Drawings\74929\DOT\74929-110-S00.dgn

USER NAME = steffenmk	DESIGNED -	REVISED -
	DRAWN -	REVISED -
PLOT SCALE = 100.0000' / in.	CHECKED -	REVISED -
PLOT DATE = 12/23/2019	DATE -	REVISED -

STATE OF ILLINOIS
DEPARTMENT OF TRANSPORTATION

SUMMARY OF QUANTITIES

SCALE: SHEET 1 OF 1 SHEETS STA. TO STA.

F.A.I. RTE.	SECTION	COUNTY	TOTAL SHEETS	SHEET NO.
57/70	D7 PATCHING 2020-1	EFFINGHAM	5	3
			CONTRACT NO. 74929	
			ILLINOIS FED. AID PROJECT	

PATCHING SCHEDULE																		
LOCATION	CLASS A PATCHES, TYPE I, 13"	CLASS A PATCHES, TYPE II, 13"	CLASS A PATCHES, TYPE III, 13"	CLASS B PATCHES, TYPE II, 10"	CLASS B PATCHES, TYPE III, 10"	CLASS B PATCHES, TYPE II, 16"	CLASS B PATCHES, TYPE III, 16"	CLASS B PATCHES, TYPE IV, 16"	CLASS D PATCHES, TYPE II, 10"	CLASS D PATCHES, TYPE III, 10"	CLASS D PATCHES, TYPE I, 13"	CLASS D PATCHES, TYPE II, 13"	DOWEL BARS 1 1/2"	TIE BARS 3/4"	WELDED WIRE REINFORCEMENT	PATCHING REINFORCEMENT	SAW CUTS	
	SO YD	SO YD	SO YD	SO YD	SO YD	SO YD	SO YD	SO YD	SO YD	SO YD	SO YD	SO YD	EACH	EACH	SO YD	SO YD	FOOT	
A	5	45	16											28		65	349	
B				136	32								380		32		915	
C				44									104				185	
D				54									140				246	
E						16	16	27					80	9	43		189	
F						43							80				161	
G											8	112						
H									11	18								
I									32									
TOTALS	5	45	16	234	32	59	16	27	43	18	8	112	784	37	75	65	2045	

LOCATION DESCRIPTIONS		
A	URBAN	I-57/70 - KELLER DRIVE INTERCHANGE EAST TO END OF NEW CONSTRUCTION
B	URBAN	HENRIETTA & KELLER DRIVE FROM SOUTH HENRIETTA TO KELLER DRIVE INTERCHANGE
C	URBAN	WEST EVERGREEN
D	URBAN	I-57 SOUTHBOUND RAMP BY FLYING J TRUCKSTOP
E	RURAL	I-70 EAST OF THE NORTH TRI-LEVEL
F	URBAN	SOUTHBOUND I-57 AT SOUTH TRI-LEVEL (AT SPLIT WITH I-70 WESTBOUND)
G	URBAN	I-57/70 FROM THE FAYETTE AVENUE INTERCHANGE TO THE SOUTH TRI-LEVEL
H	URBAN	FAYETTE AVENUE INTERCHANGE RAMPS
I	URBAN	KELLER DRIVE INTERCHANGE RAMPS

MODEL: Default
 FILE: Model: P:\pub\harcourm.dta\illinois.gov\PI\DOT\Documents\DOT_Offices\District_7\Projects\74929\CAAD\BataCAD\sheet\DOT74929-shc-schedule.dgn

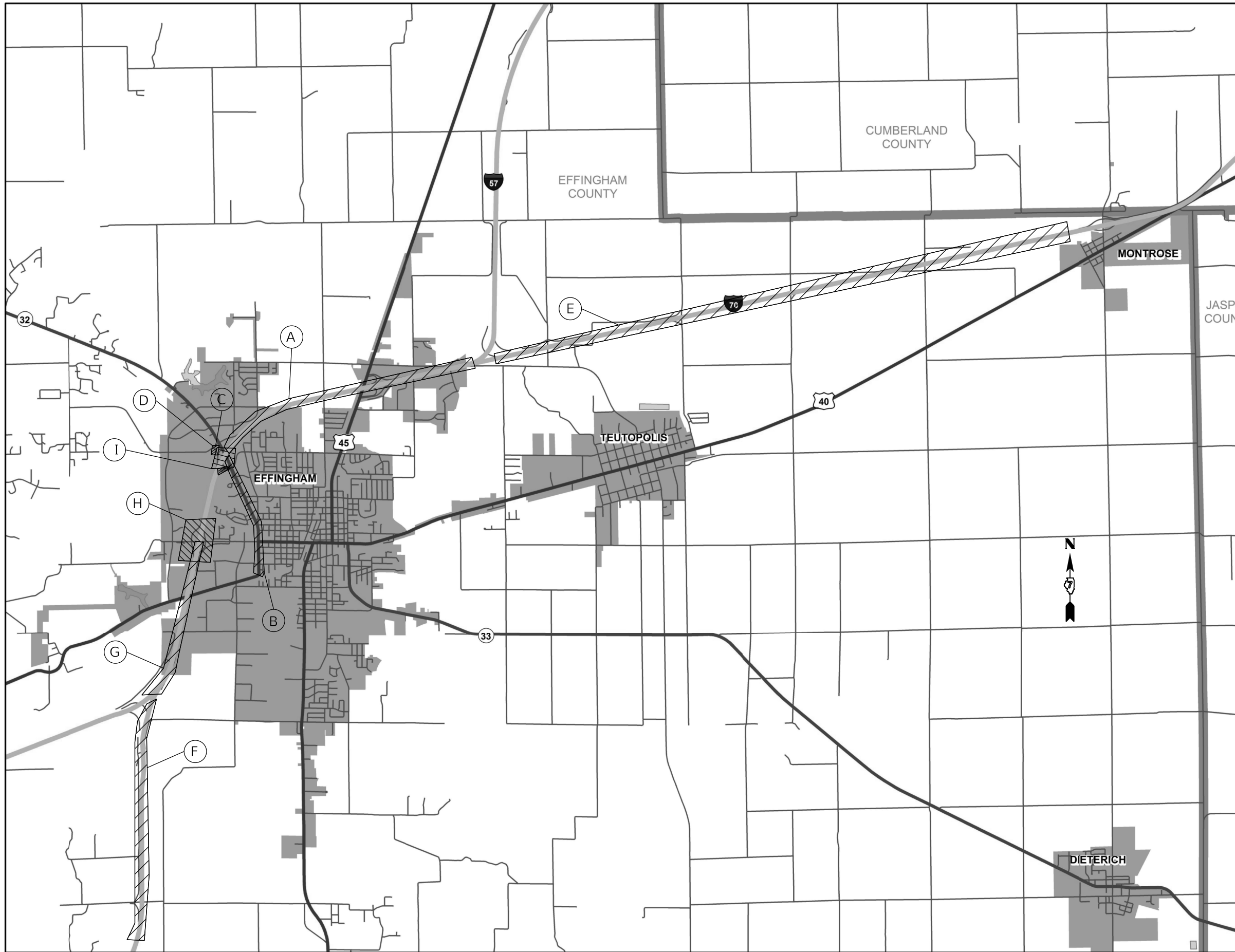
USER NAME = steffemk	DESIGNED -	REVISED -
	DRAWN -	REVISED -
PLOT SCALE = 100,0000' / in.	CHECKED -	REVISED -
PLOT DATE = 12/23/2019	DATE -	REVISED -

**STATE OF ILLINOIS
DEPARTMENT OF TRANSPORTATION**

**SCHEDULE OF QUANTITIES AND
LOCATION DESCRIPTIONS**

SCALE: SHEET 1 OF 1 SHEETS STA. TO STA.

F.A.I. RTE.	SECTION	COUNTY	TOTAL SHEETS	SHEET NO.
57/70	D7 PATCHING 2020-1	EFFINGHAM	5	4
CONTRACT NO. 74929			ILLINOIS FED. AID PROJECT	



MODEL: Default
 FILE: \\nas01c.pw.state.il.us\pub\baronm.d\at\illinois.gov\PI\DOT\Documents\DOT_Offices\District_7\Projects\74929\CADD\data\CADD\sheet\074929-shc-dets-lls.dgn

USER NAME = steffenmk	DESIGNED -	REVISED -
	DRAWN -	REVISED -
PLOT SCALE = 100,0000' / in.	CHECKED -	REVISED -
PLOT DATE = 12/23/2019	DATE -	REVISED -

STATE OF ILLINOIS
DEPARTMENT OF TRANSPORTATION

LOCATION MAP			
SCALE:	SHEET 1	OF 1	SHEETS
	STA.		TO STA.

F.A.I. RTE.	SECTION	COUNTY	TOTAL SHEETS	SHEET NO.
57/70	D7 PATCHING 2020-1	EFFINGHAM	5	5
CONTRACT NO. 74929			ILLINOIS FED. AID PROJECT	