

116

03-06-2020 LETTING ITEM 115

STATE OF ILLINOIS  
DEPARTMENT OF TRANSPORTATION

F.A.P. RTE.	SECTION	COUNTY	TOTAL SHEETS	SHEET NO.
793	R-1PP-1	MADISON	12	1
		ILLINOIS	CONTRACT NO. 76N26	

FOR INDEX OF SHEETS, SEE SHEET NO. 2

# PROPOSED HIGHWAY PLANS

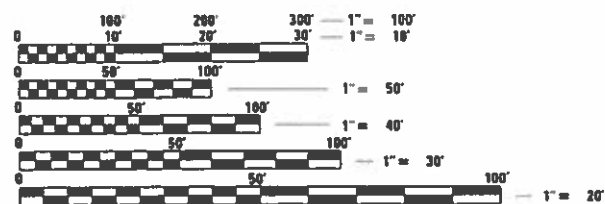
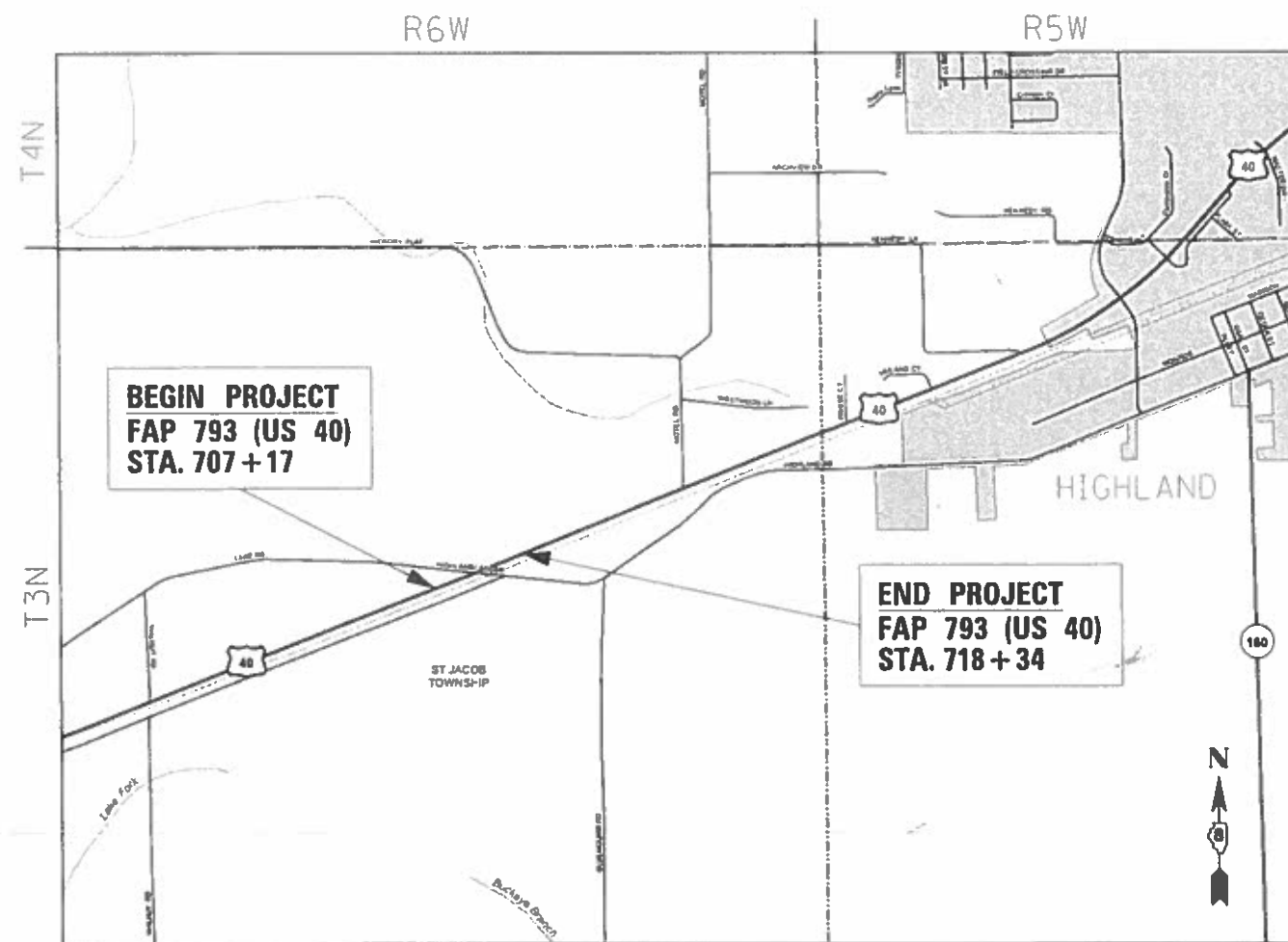
FAP ROUTE 793 (US 40)  
SECTION R-1PP-1  
PATCHING - CM  
MADISON COUNTY

C-98-066-20

FAP 793 (SW LEG) ADT  
 2020 = 7,150 (ESTIMATED)  
 SU = 7.0% MU = 4.6%

FAP 793 (NE LEG) ADT  
 2020 = 5,300 (ESTIMATED)  
 SU = 6.7% MU = 4.1%

FUNCTIONAL CLASSIFICATION:  
OTHER ARTERIAL



FULL SIZE PLANS HAVE BEEN PREPARED USING STANDARD ENGINEERING SCALES. REDUCED SIZED PLANS WILL NOT CONFORM TO STANDARD SCALES. IN MAKING MEASUREMENTS ON REDUCED PLANS, THE ABOVE SCALES MAY BE USED.

J.U.L.I.E.  
 JOINT UTILITY LOCATION INFORMATION FOR EXCAVATORS  
 1-800-892-0123  
 OR 811

PROJECT ENGINEER: HERVE GELIN (618) 346-3179  
PROJECT MANAGER: HERVE GELIN (618) 346-3179

CONTRACT NO. 76N26

LOCATION MAP  
NOT TO SCALE

GROSS LENGTH = 1117 FT. = 0.212 MILE  
NET LENGTH = 1117 FT. = 0.212 MILE

STATE OF ILLINOIS  
DEPARTMENT OF TRANSPORTATION

SUBMITTED Dec 2 20 19  
*Karl K. Roberts*  
 REGIONAL ENGINEER

Jan 31 20 20  
*[Signature]*  
 ENGINEER OF DESIGN AND ENVIRONMENT

Jan 31 20 20  
*[Signature]*  
 DIRECTOR OF HIGHWAYS PROJECT IMPLEMENTATION

PRINTED BY THE AUTHORITY  
OF THE STATE OF ILLINOIS

## INDEX OF SHEETS

1. COVER SHEET
2. INDEX OF SHEETS, GENERAL NOTES, HIGHWAY STANDARDS, & COMMITMENTS
3. SUMMARY OF QUANTITIES
- 4-7. TYPICAL SECTIONS
8. SCHEDULE OF QUANTITIES
9. PLAN SHEET
- 10-12. PAVEMENT MARKING DETAILS

## HIGHWAY STANDARDS

000001-07	STANDARD SYMBOLS, ABBREVIATIONS AND PATTERNS
001006	DECIMAL OF AN INCH AND OF A FOOT
442201-03	CLASS C AND D PATCHES
701001-02	OFF-RD OPERATIONS, 2L, 2W, MORE THAN 15' AWAY
701006-05	OFF-RD OPERATIONS, 2L, 2W, 15' TO 24" FROM PAVEMENT EDGE
701011-04	OFF-RD MOVING OPERATIONS, 2L, 2W, DAY ONLY
701201-05	LANE CLOSURE, 2L, 2W, DAY ONLY, FOR SPEEDS > 45 MPH
701301-04	LANE CLOSURE, 2L, 2W, SHORT TIME OPERATIONS
701306-04	LANE CLOSURE, 2L, 2W, SLOW MOVING OPERATIONS DAY ONLY, FOR SPEEDS > 45 MPH
701311-03	LANE CLOSURE, 2L, 2W, MOVING OPERATIONS-DAY ONLY
701901-08	TRAFFIC CONTROL DEVICES
780001-05	TYPICAL PAVEMENT MARKINGS
781001-04	TYPICAL APPLICATIONS RAISED REFLECTIVE PAVEMENT MARKERS

## GENERAL NOTES

1. ILLINOIS STATE LAW REQUIRES A 48-HOUR NOTICE TO BE GIVEN TO UTILITIES BEFORE DIGGING. FIELD MARKING OF FACILITIES MAY BE OBTAINED BY CONTACTING J.U.L.I.E. (1-800-892-0123 OR 811) OR FOR NON-MEMBERS, THE UTILITY COMPANY DIRECTLY.
2. THE CONTRACTOR AND THE ENGINEER SHALL BE AWARE THAT NO SURVEY WAS PERFORMED FOR THIS PROJECT. THE STATIONING, TOPOGRAPHY, AND QUANTITIES SHOWN IN THE PLANS WERE CREATED USING MICROFILM AND FIELD MEASUREMENTS.
3. THE DEPARTMENT STRONGLY ENCOURAGES THE PRIME CONTRACTOR AND THEIR APPROVED SUB-CONTRACTORS TO HIRE MINORITY, WOMEN AND DISADVANTAGED INDIVIDUALS FROM ITS FEDERALLY FUNDED HIGHWAY CONSTRUCTION CAREERS TRAINING PROGRAM (HCCTP) TO HELP MEET WORKFORCE AND TRAINEE GOALS. THIS PROGRAM IS TRAINING MINORITIES, WOMEN AND DISADVANTAGED INDIVIDUALS IN HIGHWAY CONSTRUCTION-RELATED SKILLS, E.G., MATH FOR THE TRADES, JOB READINESS, TECHNICAL SKILLS COURSEWORK (CARPENTRY, CONCRETE FLATWORK, BLUEPRINT READING, SITE PLANS, SITE WORK, TOOLS USE, ETC.) AND OSHA 10 HOUR CERTIFICATION, TO PREPARE THEM FOR A CAREER IN THE HIGHWAY CONSTRUCTION TRADES. GRADUATES ARE WELL-TRAINED AND READY TO BECOME PRODUCTIVE ENTRY-LEVEL CONSTRUCTION WORKERS. CONTACT THE DISTRICT 8 EEO OFFICE AT 618-346-3360 AND/OR THE HCCTP COORDINATOR AT 618-874-6528 TO LEARN MORE ABOUT THE PROGRAM AND FOR ASSISTANCE IN MEETING WORKFORCE AND TRAINEE GOALS.
4. NO OVERNIGHT LANE CLOSURES WILL BE PERMITTED.
5. THE FOLLOWING MIXTURE REQUIREMENTS ARE APPLICABLE FOR THIS PROJECT:

MIXTURE USE	SURFACE
AC/PG	PG 64-22
RAP %(MAX)	SEE SPECIAL PROVISION
DESIGN AIR VOIDS	4.0% @ Ndes=70
MIX COMPOSITION (GRADATION)	IL 9.5
FRICTION AGG	MIXTURE "D"
QUALITY MGMT PROGRAM	QC/QA

PLAN QUANTITIES FOR BITUMINOUS CONCRETE SURFACE COURSE ITEMS ARE CALCULATED USING A UNIT WEIGHT OF 112 LBS/SQ YD/IN (59.8 KG/SQ M/25 MM THICKNESS)

## COMMITMENTS

NONE

MODEL: Default  
 FILE: \\harris-pc\pub\harris\room\data\illinois.gov\PI\DOT\Documents\DOT\_Offices\District\_8\Projects\0776N26\CADD\DATA\CAD\Sheet\0776N26-111-gemnote.dgn

USER NAME = humphreysb	DESIGNED -	REVISED -
	DRAWN -	REVISED -
PLOT SCALE = 40.0000 ' / in.	CHECKED -	REVISED -
PLOT DATE = 11/26/2019	DATE -	REVISED -

**STATE OF ILLINOIS**  
**DEPARTMENT OF TRANSPORTATION**

**INDEX OF SHEETS, HIGHWAY STANDARDS,**  
**GENERAL NOTES, AND COMMITMENTS**

SCALE: NTS      SHEET 1 OF 1 SHEETS      STA.      TO STA.

F.A.P. RTE.	SECTION	COUNTY	TOTAL SHEETS	SHEET NO.
793	R-1PP-1	MADISON	12	2
CONTRACT NO. 76N26			ILLINOIS FED. AID PROJECT	

MODEL: Default  
 FILE: \\nlsr1c1\pub\lhamroom.dwg  
 PROJECT: \\nlsr1c1\pub\lhamroom.dwg  
 PLOT DATE: 11/26/2019

CODE NO.	ITEM	UNIT	TOTAL QUANTITY	CONSTR. CODE
				STATE 100% ROADWAY
				0006 RURAL
40600290	BITUMINOUS MATERIALS (TACK COAT)	POUND	2990	2990
40600990	TEMPORARY RAMP	SQ YD	176	176
40604062	HOT-MIX ASPHALT SURFACE COURSE, 1L-9.5, MIX "D", N70	TON	520	520
44000157	HOT-MIX ASPHALT SURFACE REMOVAL, 2"	SQ YD	4616	4616
67100100	MOBILIZATION	L SUM	1	1
70100460	TRAFFIC CONTROL AND PROTECTION, STANDARD 701306	L SUM	1	1
70300100	SHORT TERM PAVEMENT MARKING	FOOT	320	320
70300150	SHORT TERM PAVEMENT MARKING REMOVAL	SQ FT	108	108
70300210	TEMPORARY PAVEMENT MARKING LETTERS AND SYMBOLS	SQ FT	94	94
70300220	TEMPORARY PAVEMENT MARKING - LINE 4"	FOOT	3031	3031
70300250	TEMPORARY PAVEMENT MARKING - LINE 8"	FOOT	181	181
70300260	TEMPORARY PAVEMENT MARKING - LINE 12"	FOOT	125	125
70300280	TEMPORARY PAVEMENT MARKING - LINE 24"	FOOT	69	69
* 78000100	THERMOPLASTIC PAVEMENT MARKING - LETTERS AND SYMBOLS	SQ FT	94	94

\* SPECIALTY ITEM

CODE NO.	ITEM	UNIT	TOTAL QUANTITY	CONSTR. CODE
				STATE 100% ROADWAY
				0006 RURAL
* 78000200	THERMOPLASTIC PAVEMENT MARKING - LINE 4"	FOOT	3031	3031
* 78000500	THERMOPLASTIC PAVEMENT MARKING - LINE 8"	FOOT	181	181
* 78000600	THERMOPLASTIC PAVEMENT MARKING - LINE 12"	FOOT	125	125
* 78000650	THERMOPLASTIC PAVEMENT MARKING - LINE 24"	FOOT	69	69
* 78100100	RAISED REFLECTIVE PAVEMENT MARKER	EACH	21	21
78300200	RAISED REFLECTIVE PAVEMENT MARKER REMOVAL	EACH	21	21
Z0033700	LONGITUDINAL JOINT SEALANT	FOOT	1901	1901
Z0048665	RAILROAD PROTECTIVE LIABILITY INSURANCE	L SUM	1	1

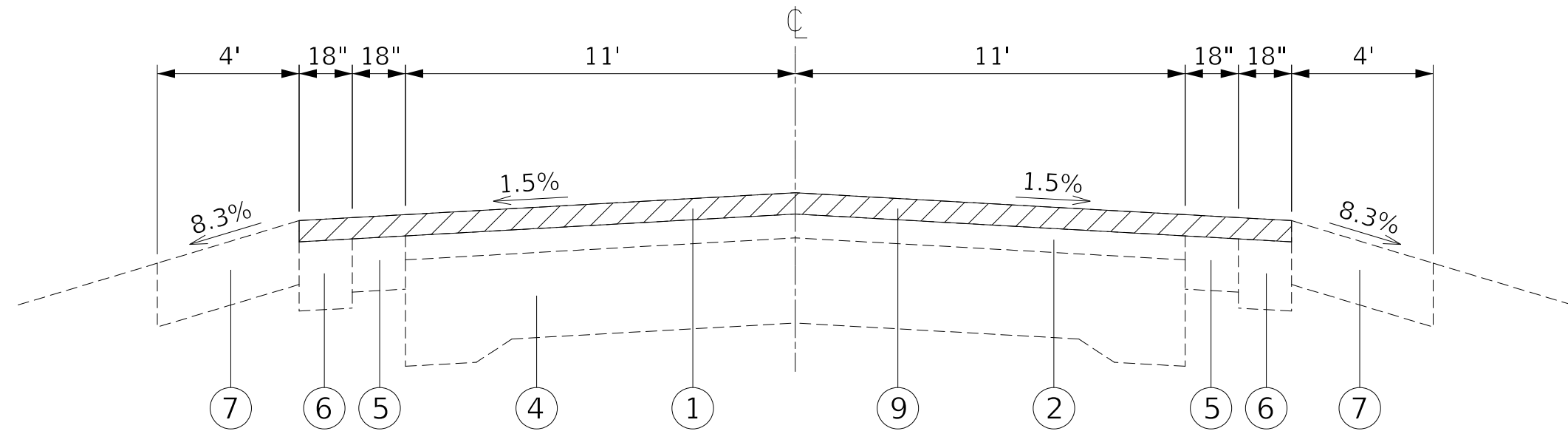
USER NAME = humphreysb	DESIGNED -	REVISED -
DRAWN -	REVISIONS -	
PLOT SCALE = 40.0000 ' / in.	CHECKED -	REVISED -
PLOT DATE = 11/26/2019	DATE -	REVISED -

**STATE OF ILLINOIS  
DEPARTMENT OF TRANSPORTATION**

**SUMMARY OF QUANTITIES**

SCALE: NTS      SHEET 1    OF 1    SHEETS    STA.                      TO STA.

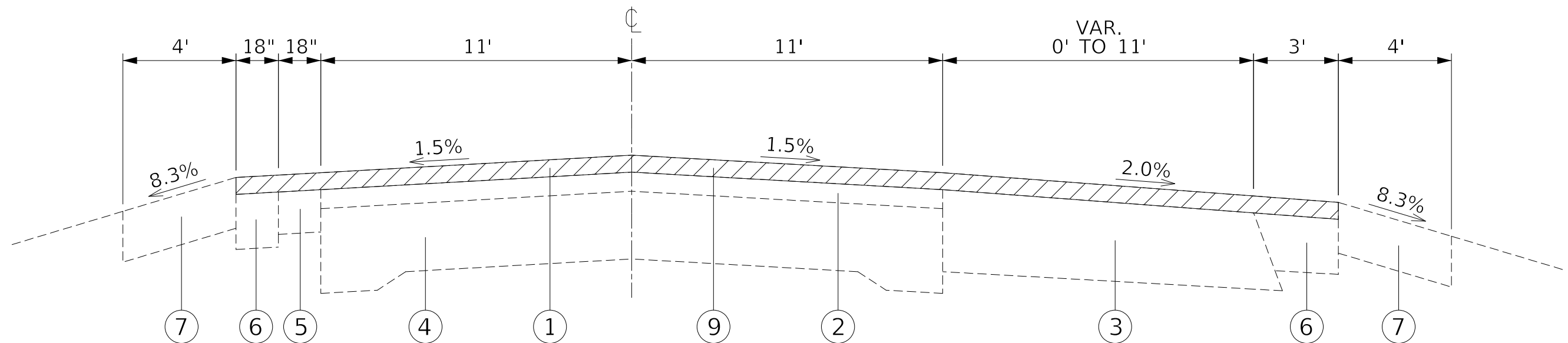
F.A.P. RTE.	SECTION	COUNTY	TOTAL SHEETS	SHEET NO.
793	R-1PP-1	MADISON	12	3
CONTRACT NO. 76N26			ILLINOIS FED. AID PROJECT	



**EXISTING TYPICAL SECTION**

**FAP 793 (US 40)**

STA. 707+17 TO STA. 707+87  
STA. 712+27 TO STA. 718+34



**EXISTING TYPICAL SECTION**

**FAP 793 (US 40)**

STA. 707+87 TO STA. 712+27

**LEGEND**

- ① EXISTING BITUMINOUS RESURFACING LAYER, 2" (SURFACE 1 1/2", BINDER 1/2")
- ② EXISTING BITUMINOUS RESURFACING LAYER, 2 1/4" (SURFACE 1 1/2", BINDER 3/4")
- ③ EXISTING BINDER COURSE, 9"
- ④ EXISTING P.C.C. PAVEMENT (10"-8"-10")
- ⑤ EXISTING BITUMINOUS SHOULDER, 5"
- ⑥ EXISTING BITUMINOUS SHOULDER, 6 1/2"
- ⑦ EXISTING AGGREGATE SHOULDER, 6"
- ⑧ EXISTING PAVEMENT, 10"
- ⑨ PROPOSED BITUMINOUS SURFACE REMOVAL, 2"
- ⑩ PROPOSED HOT-MIX ASPHALT SURFACE COURSE, 2"
- ⑪ PROPOSED TACK COAT
- ⑫ PROPOSED LONGITUDINAL JOINT SEALANT

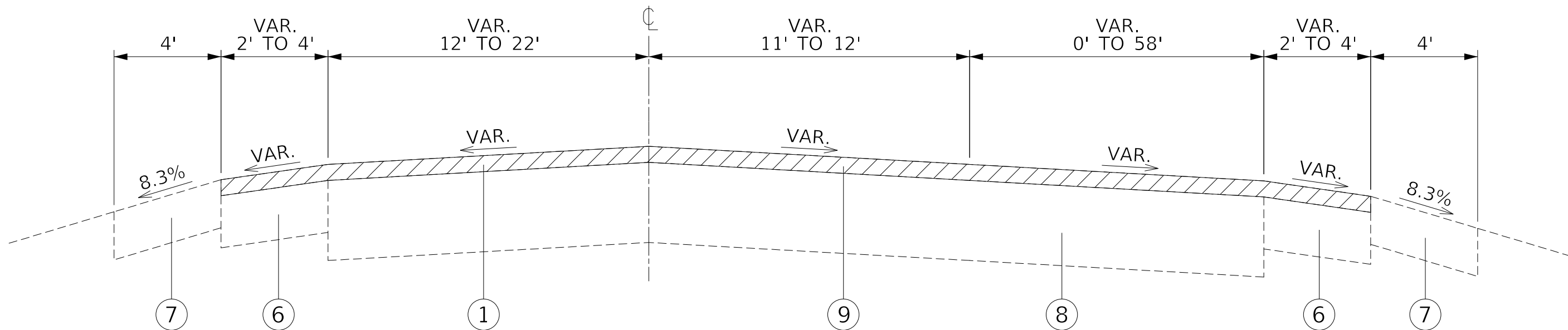
MODEL: Default  
FILE: Model: P:\pub\haronom.dta\illinois.gov\PROJECTS\DOT Documents\DOT Offices\District 8\Projects\0776N26\0776N26-shc-typ1.ctb.dgn

USER NAME = humphreysb	DESIGNED -	REVISED -
	DRAWN -	REVISED -
PLOT SCALE = 40.0000 ' / in.	CHECKED -	REVISED -
PLOT DATE = 11/26/2019	DATE -	REVISED -

**STATE OF ILLINOIS  
DEPARTMENT OF TRANSPORTATION**

<b>TYPICAL SECTIONS</b>			
SCALE: NTS	SHEET 1	OF 4 SHEETS	STA. TO STA.

F.A.P. RTE.	SECTION	COUNTY	TOTAL SHEETS	SHEET NO.
793	R-1PP-1	MADISON	12	4
CONTRACT NO. 76N26				
ILLINOIS FED. AID PROJECT				



**EXISTING TYPICAL SECTION  
HIGHLAND ROAD**

STA. 0+21 TO STA. 1+84

**LEGEND**

- |   |  |   |
|---|--|---|
| ① EXISTING BITUMINOUS RESURFACING LAYER, 2" (SURFACE 1 1/2", BINDER 1/2")     | ⑤ EXISTING BITUMINOUS SHOULDER, 5"     | ⑨ PROPOSED BITUMINOUS SURFACE REMOVAL, 2"     |
| ② EXISTING BITUMINOUS RESURFACING LAYER, 2 1/4" (SURFACE 1 1/2", BINDER 3/4") | ⑥ EXISTING BITUMINOUS SHOULDER, 6 1/2" | ⑩ PROPOSED HOT-MIX ASPHALT SURFACE COURSE, 2" |
| ③ EXISTING BINDER COURSE, 9"  | ⑦ EXISTING AGGREGATE SHOULDER, 6"      | ⑪ PROPOSED TACK COAT                          |
| ④ EXISTING P.C.C. PAVEMENT (10"-8"-10")                                       | ⑧ EXISTING PAVEMENT, 10"               | ⑫ PROPOSED LONGITUDINAL JOINT SEALANT         |

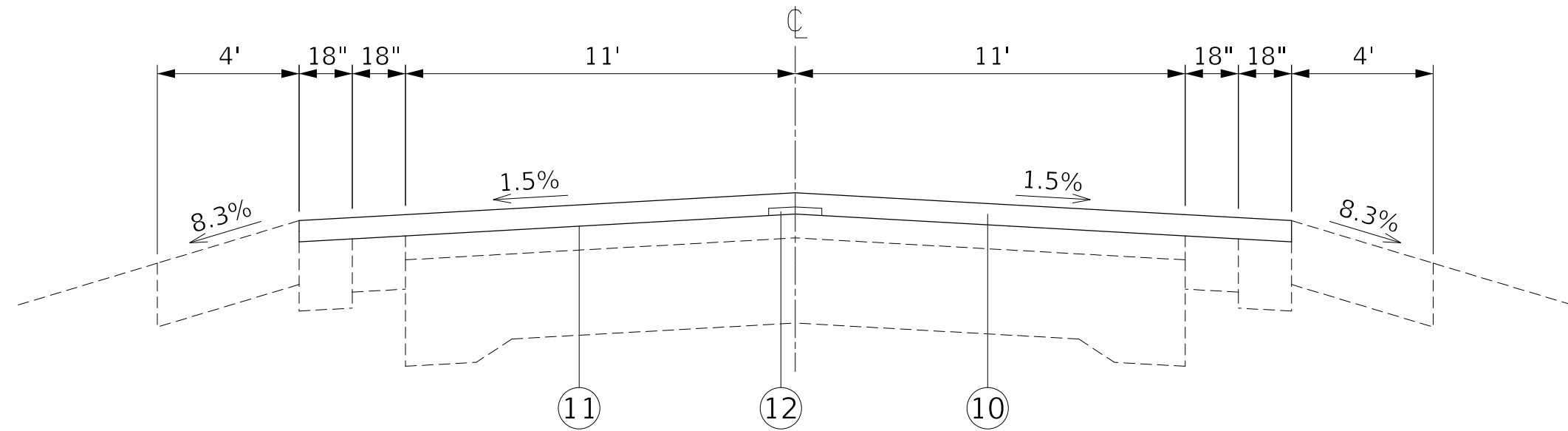
MODEL: Default  
 FILE: Model: P:\planningroom\data\illinois\pwr\DOT\Documents\DOT Office\Drawings\Projects\0776N26\CADD\data\CAD\Drawings\0776N26-shc-typical.dgn

USER NAME = humphreysb	DESIGNED -	REVISED -
	DRAWN -	REVISED -
PLOT SCALE = 40.0000' / in.	CHECKED -	REVISED -
PLOT DATE = 11/26/2019	DATE -	REVISED -

**STATE OF ILLINOIS  
DEPARTMENT OF TRANSPORTATION**

<b>TYPICAL SECTIONS</b>	
SCALE: NTS	SHEET 2 OF 4 SHEETS
STA.	TO STA.

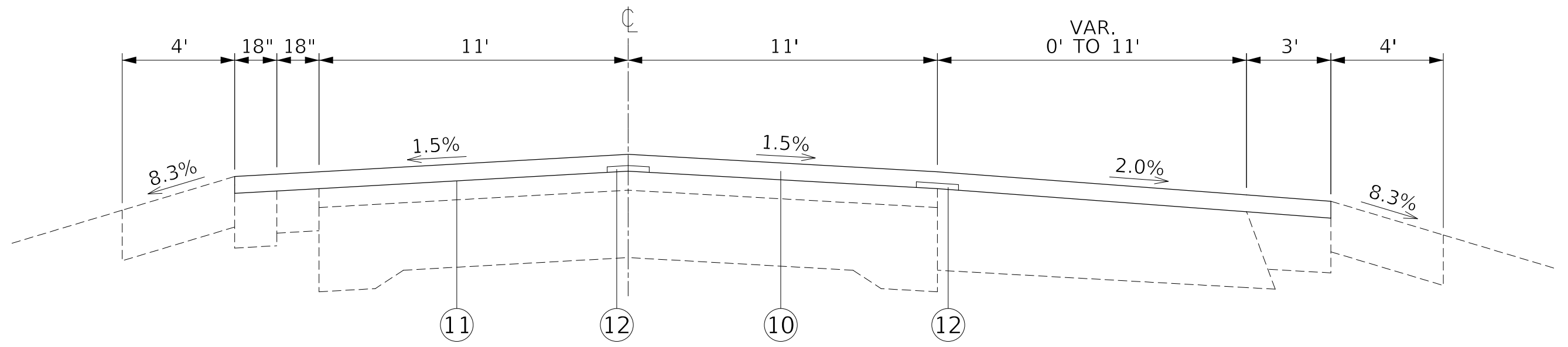
F.A.P. RTE. 793	SECTION R-1PP-1	COUNTY MADISON	TOTAL SHEETS 12	SHEET NO. 5
ILLINOIS FED. AID PROJECT			CONTRACT NO. 76N26	



**PROPOSED TYPICAL SECTION**

**FAP 793 (US 40)**

STA. 707+17 TO STA. 707+87  
 STA. 712+27 TO STA. 718+34



**PROPOSED TYPICAL SECTION**

**FAP 793 (US 40)**

STA. 707+87 TO STA. 712+27

**LEGEND**

- ① EXISTING BITUMINOUS RESURFACING LAYER, 2" (SURFACE 1 1/2", BINDER 1/2")
- ⑤ EXISTING BITUMINOUS SHOULDER, 5"
- ⑨ PROPOSED BITUMINOUS SURFACE REMOVAL, 2"
- ② EXISTING BITUMINOUS RESURFACING LAYER, 2 1/4" (SURFACE 1 1/2", BINDER 3/4")
- ⑥ EXISTING BITUMINOUS SHOULDER, 6 1/2"
- ⑩ PROPOSED HOT-MIX ASPHALT SURFACE COURSE, 2"
- ③ EXISTING BINDER COURSE, 9"
- ⑦ EXISTING AGGREGATE SHOULDER, 6"
- ⑪ PROPOSED TACK COAT
- ④ EXISTING P.C.C. PAVEMENT (10"-8"-10")
- ⑧ EXISTING PAVEMENT, 10"
- ⑫ PROPOSED LONGITUDINAL JOINT SEALANT

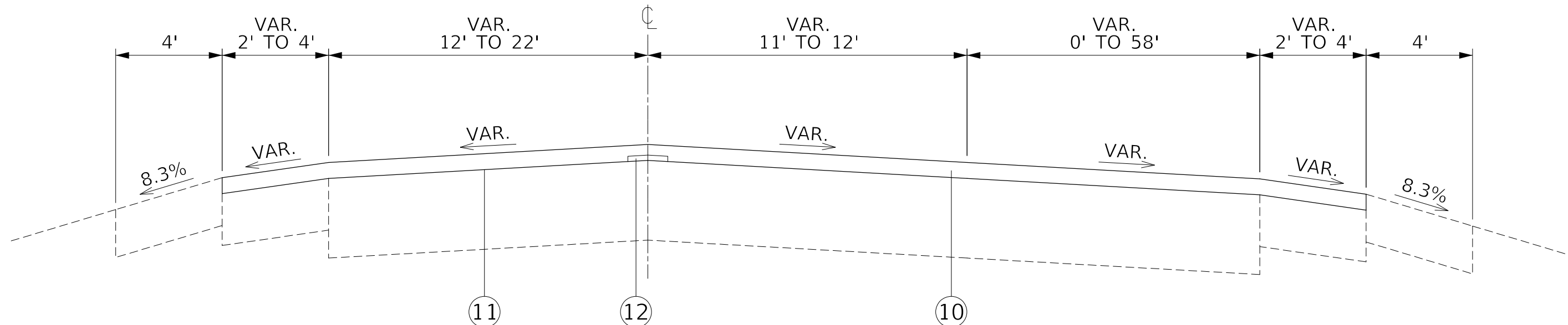
MODEL: Default  
 FILE: Model - Plot - Typical Sections - R-1PP-1 - 793 - 11/26/2019.dgn  
 PROJECT: 793 - R-1PP-1 - 11/26/2019

USER NAME = humphreysb	DESIGNED -	REVISED -
	DRAWN -	REVISED -
PLOT SCALE = 40.0000' / in.	CHECKED -	REVISED -
PLOT DATE = 11/26/2019	DATE -	REVISED -

**STATE OF ILLINOIS  
 DEPARTMENT OF TRANSPORTATION**

<b>TYPICAL SECTIONS</b>			
SCALE: NTS	SHEET 3	OF 4 SHEETS	STA. TO STA.

F.A.P. RTE.	SECTION	COUNTY	TOTAL SHEETS	SHEET NO.
793	R-1PP-1	MADISON	12	6
CONTRACT NO. 76N26				
ILLINOIS FED. AID PROJECT				



**PROPOSED TYPICAL SECTION  
HIGHLAND ROAD**

STA. 0+21 TO STA. 1+84

**LEGEND**

- |   |  |   |
|---|--|---|
| ① EXISTING BITUMINOUS RESURFACING LAYER, 2" (SURFACE 1 1/2", BINDER 1/2")     | ⑤ EXISTING BITUMINOUS SHOULDER, 5"     | ⑨ PROPOSED BITUMINOUS SURFACE REMOVAL, 2"     |
| ② EXISTING BITUMINOUS RESURFACING LAYER, 2 1/4" (SURFACE 1 1/2", BINDER 3/4") | ⑥ EXISTING BITUMINOUS SHOULDER, 6 1/2" | ⑩ PROPOSED HOT-MIX ASPHALT SURFACE COURSE, 2" |
| ③ EXISTING BINDER COURSE, 9"  | ⑦ EXISTING AGGREGATE SHOULDER, 6"      | ⑪ PROPOSED TACK COAT                          |
| ④ EXISTING P.C.C. PAVEMENT (10"-8"-10")                                       | ⑧ EXISTING PAVEMENT, 10"               | ⑫ PROPOSED LONGITUDINAL JOINT SEALANT         |

MODEL: Default  
FILE: \\ms1c2.pic1.pbl\hlanom.dwg\illinois\gov\PHUDOT\Documents\DOT\_Offices\District\_8\Projects\0776N26\CADD\DATA\CAD\Sheet\0776N26-shc-typ1.ctb.dgn

USER NAME = humphreysb	DESIGNED -	REVISED -
	DRAWN -	REVISED -
PLOT SCALE = 40.0000 ' / in.	CHECKED -	REVISED -
PLOT DATE = 11/26/2019	DATE -	REVISED -

**STATE OF ILLINOIS  
DEPARTMENT OF TRANSPORTATION**

**TYPICAL SECTIONS**

SCALE: NTS    SHEET 4 OF 4 SHEETS    STA.    TO STA.

F.A.P. RTE. 793	SECTION R-1PP-1	COUNTY MADISON	TOTAL SHEETS 12	SHEET NO. 7
CONTRACT NO. 76N26				
ILLINOIS FED. AID PROJECT				

PAVEMENT MARKING SCHEDULE																	
LOCATION						THERMOPLASTIC PAVEMENT MARKING						SHORT TERM PAVEMENT MARKING REMOVAL (SQ FT)	SHORT TERM PAVEMENT MARKING (FOOT)	RAISED REFLECTIVE PAVEMENT MARKER (EACH)	RAISED REFLECTIVE PAVEMENT MARKER		NOTES
						YELLOW 4-INCH (FOOT)	WHITE 4-INCH (FOOT)	WHITE 8-INCH (FOOT)	WHITE 12-INCH (FOOT)	WHITE 24-INCH (FOOT)	WHITE LETTERS & SYMBOLS (SQ FT)				TWO-WAY AMBER (EACH)	ONE-WAY CRYSTAL (EACH)	
ROADWAY	STATION	OFFSET	TO	STATION	OFFSET												
US 40	707+17	26.0' RT	TO	718+34	26.0' RT	280						70	208	14	14		SKIP-DASH YELLOW
US 40	707+17	38.0' RT	TO	707+87	38.0' RT		70										SOLID WHITE
US 40	707+17	14.0' RT	TO	711+15	14.0' RT		398										SOLID WHITE
US 40	707+87	38.0' RT	TO	710+37	38.0' RT		64				16	48					DOTTED LINE WHITE
US 40	707+87	38.0' RT	TO	710+37	50.0' RT		250										SOLID WHITE
US 40	710+37	38.0' RT	TO	712+27	38.0' RT		190				14	40	5		5		SOLID WHITE
US 40	710+37	50.0' RT	TO	712+27	50.0' RT		190										SOLID WHITE
US 40	710+91	41.0' RT								16							RIGHT TURN
US 40	711+73	41.0' RT								16							RIGHT TURN
US 40	712+47	14.0' RT	TO	718+34	14.0' RT		587										SOLID WHITE
US 40	713+89	38.0' RT	TO	718+34	38.0' RT		445										SOLID WHITE
HIGHLAND RD	0+04	23.0' RT	TO	1+66	11.6' RT		156										SOLID WHITE
HIGHLAND RD	0+41	12.0' LT	TO	1+04	49.4' LT												ISLAND WHITE
HIGHLAND RD	0+41	12.0' LT	TO	1+10	12.0' LT												ISLAND WHITE
HIGHLAND RD	0+53		TO	1+76		246					8	24	2	2			SOLID DOUBLE YELLOW
HIGHLAND RD	0+53	0.5' LT	TO	0+55	12.0' LT					12							STOP BAR
HIGHLAND RD	0+53	0.5' RT	TO	0+55	14.5' RT					15							SOLID WHITE
HIGHLAND RD	0+47	12.0' LT	TO	0+50	17.2' LT					6							SOLID WHITE CHEVRON
HIGHLAND RD	0+58	12.0' LT	TO	0+67	27.5' LT					19							SOLID WHITE CHEVRON
HIGHLAND RD	0+70	12.0' LT	TO	0+84	37.8' LT					31							SOLID WHITE CHEVRON
HIGHLAND RD	0+82	12.0' LT	TO	0+01	48.1' LT					43							SOLID WHITE CHEVRON
HIGHLAND RD	0+94	12.0' LT	TO	0+04	26.7' LT					19							SOLID WHITE CHEVRON
HIGHLAND RD	1+04	12.0' LT	TO	0+08	17.3' LT					7							SOLID WHITE CHEVRON
HIGHLAND RD	0+70	1.9' RT								54							RAILROAD "X"
HIGHLAND RD	0+77	1.9' RT								8							RAILROAD "R"
HIGHLAND RD	1+03	0.5' RT	TO	1+05	12.0' RT					12							SOLID WHITE
HIGHLAND RD	1+04	30.5' LT	TO	1+23	33.6' LT					18							RR 24 INCH SOLID LINE
HIGHLAND RD	1+23	0.5' RT	TO	1+25	12.0' RT					12							RR 24 INCH SOLID LINE
HIGHLAND RD	1+04	49.4' LT	TO	1+11	12.0' LT												ISLAND WHITE
HIGHLAND RD	1+38	70.0' LT	TO	2+04	11.6' LT												SOLID WHITE
TOTALS						526	2505	181	125	69	94	108	320	21	16	5	

PAVING SCHEDULE												
LOCATION						HOT-MIX ASPHALT SURFACE REMOVAL, 2"	HOT-MIX ASPHALT SURFACE COURSE, IL-9.5, MIX "D", N70	BITUMINOUS MATERIALS (TACK COAT)	LONGITUDINAL JOINT SEALANT	TEMPORARY RAMPS	NOTES	
ROADWAY	STATION	TO	STATION	DIRECTION	LENGTH	(SQ YD)	(TON)	(POUND)	(FOOT)	(SQ YD)		
US 40	707+17	TO	707+87	EB	70	113	13	71		11	TRAVEL LANE	
US 40	707+87	TO	713+89	EB	602	736	83	461	176	42	TRAVEL LANE	
US 40	707+87	TO	710+37	EB	250	202	23	126	250		RIGHT-TURN LANE TAPER	
US 40	710+37	TO	712+27	EB	190	307	35	192	194		RIGHT-TURN LANE	
US 40	713+89	TO	718+34	EB	445	717	81	449		11	TRAVEL LANE	
US 40	707+17	TO	718+34	WB	1117	1800	202	1126	1117	112	TRAVEL LANE	
HIGHLAND RD	0+21	TO	1+85		164	741	83	464	164		US 40 TO 5' FROM RR TRACKS	
TOTALS						4616	520	2889	1901	176		

MODEL: Default  
 FILE: Model\_PlanUploadRoom.dwg  
 PROJECT: 076N26-CADDDataCAD\Projects\076N26-PlanSchedule.dgn  
 OFFICE: 076N26-CADDDataCAD\Projects\076N26-PlanSchedule.dgn

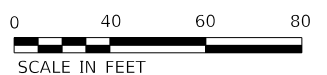
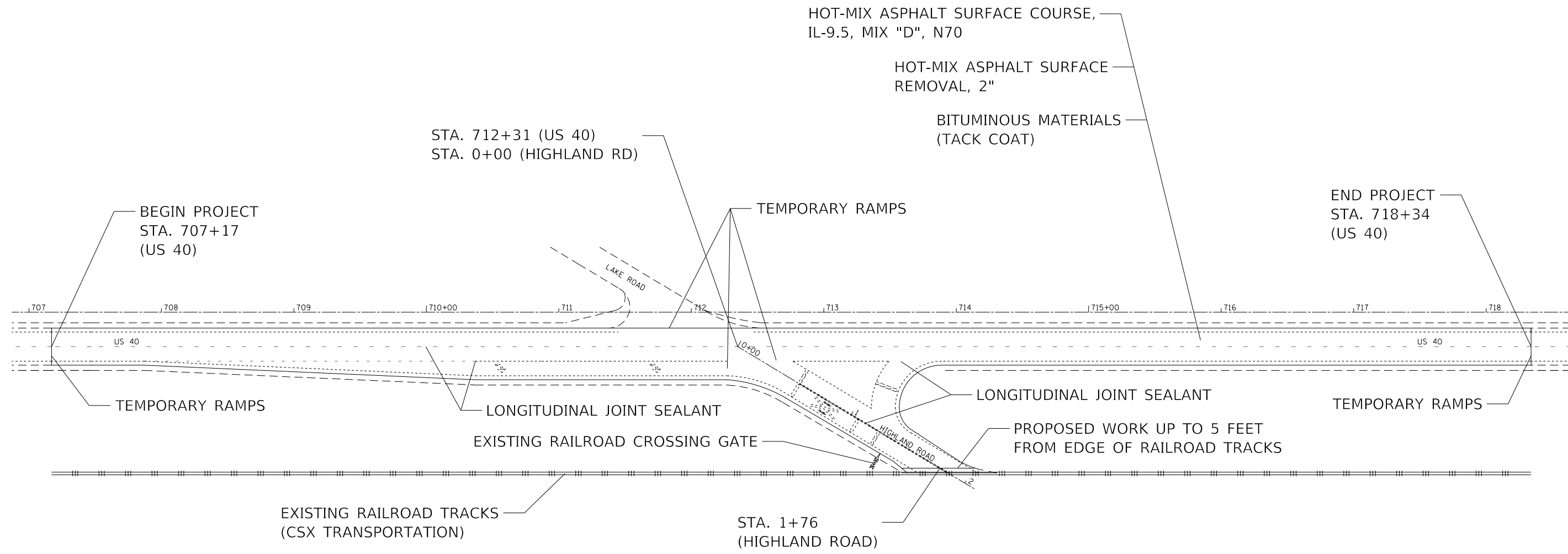
USER NAME = humphreysb	DESIGNED -	REVISED -
	DRAWN -	REVISED -
PLOT SCALE = 40.0000 ' / in.	CHECKED -	REVISED -
PLOT DATE = 11/26/2019	DATE -	REVISED -

**STATE OF ILLINOIS  
DEPARTMENT OF TRANSPORTATION**

SCHEDULE OF QUANTITIES			
SCALE: NTS	SHEET 1	OF 1 SHEETS	STA. TO STA.

F.A.P. RTE.	SECTION	COUNTY	TOTAL SHEETS	SHEET NO.
793	R-1PP-1	MADISON	12	8
CONTRACT NO. 76N26				
ILLINOIS FED. AID PROJECT				





MODEL: Default  
 FILE: h:\m\c:\pic\uplanroom.dat\illinois.gov\PIV\DOT\Documents\DOT\_Offices\District 8\Projects\076N26\CADD\data\CAD\pieces\076N26-sh-detailed.dgn

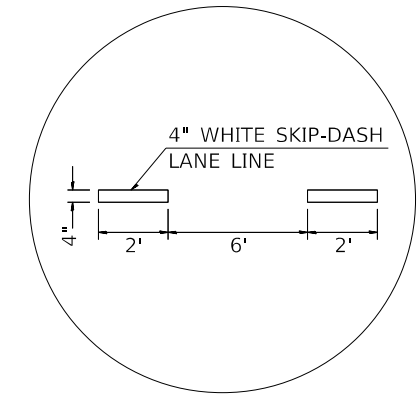
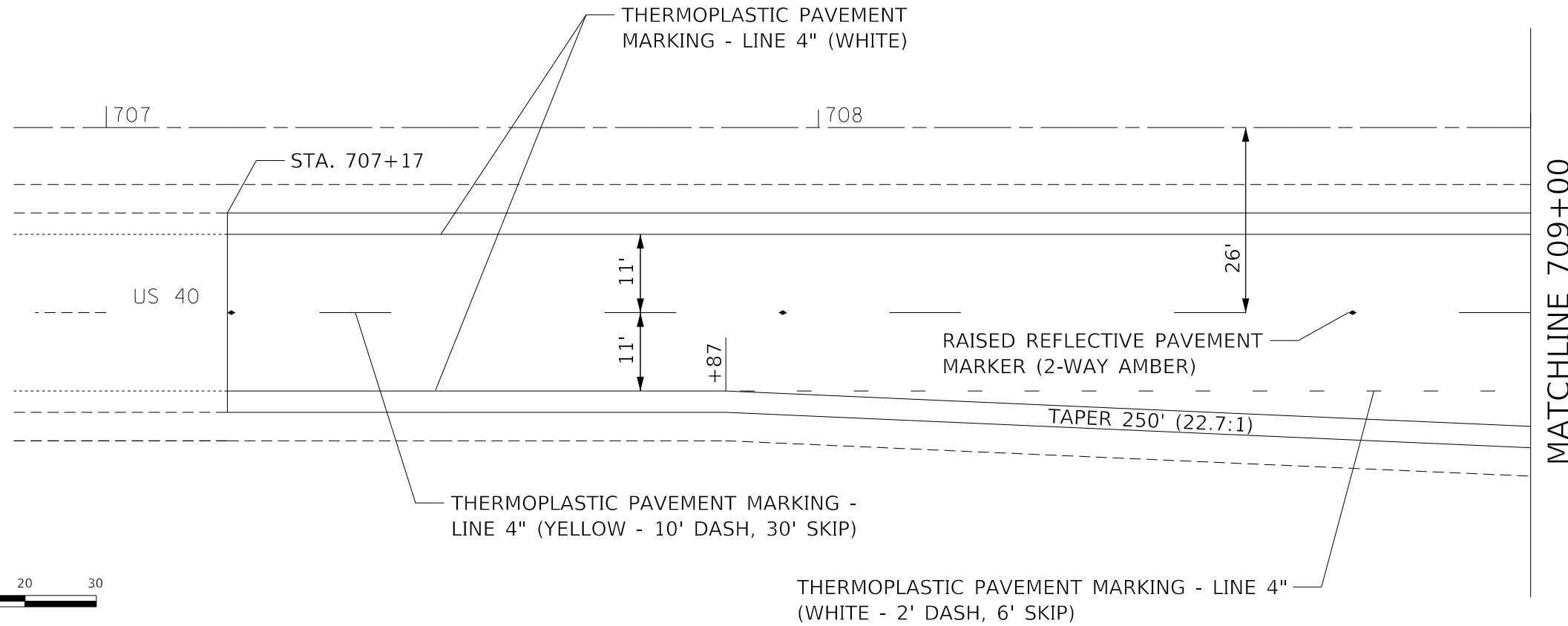
USER NAME = humphreysb	DESIGNED -	REVISED -
DRAWN -	REVISED -	
PLOT SCALE = 40.0000 ' / in.	CHECKED -	REVISED -
PLOT DATE = 11/26/2019	DATE -	REVISED -

**STATE OF ILLINOIS  
DEPARTMENT OF TRANSPORTATION**

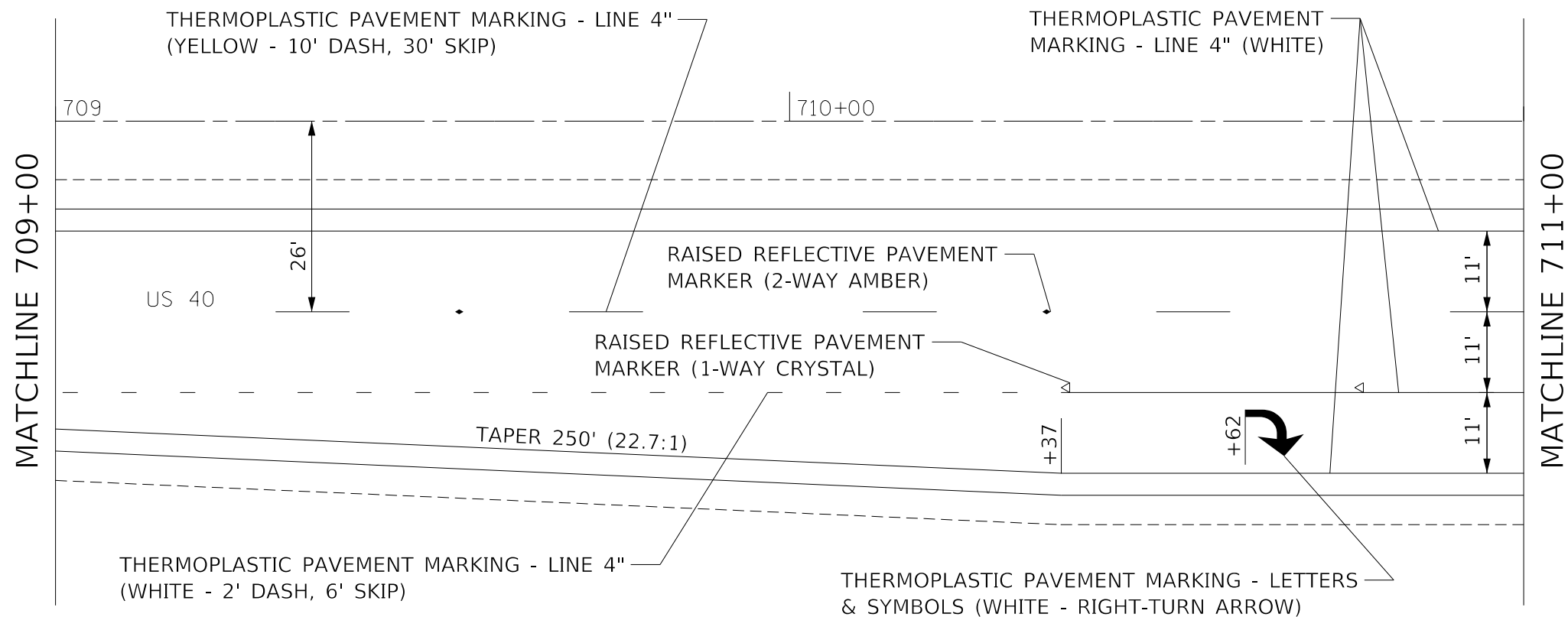
**PLAN SHEET**

SCALE: 1" = 40'    SHEET 1    OF 1    SHEETS    STA. 707+17    TO STA. 718+34

F.A.P. RTE.	SECTION	COUNTY	TOTAL SHEETS	SHEET NO.
793	R-1PP-1	MADISON	12	9
CONTRACT NO. 76N26				
ILLINOIS FED. AID PROJECT				



**TYPICAL WHITE ABBREVIATED SKIP-DASH LANE LINES DETAIL**



MODEL: Default  
FILE: N:\11111111\11111111\11111111\11111111\11111111\11111111\11111111\11111111\11111111\11111111.dgn

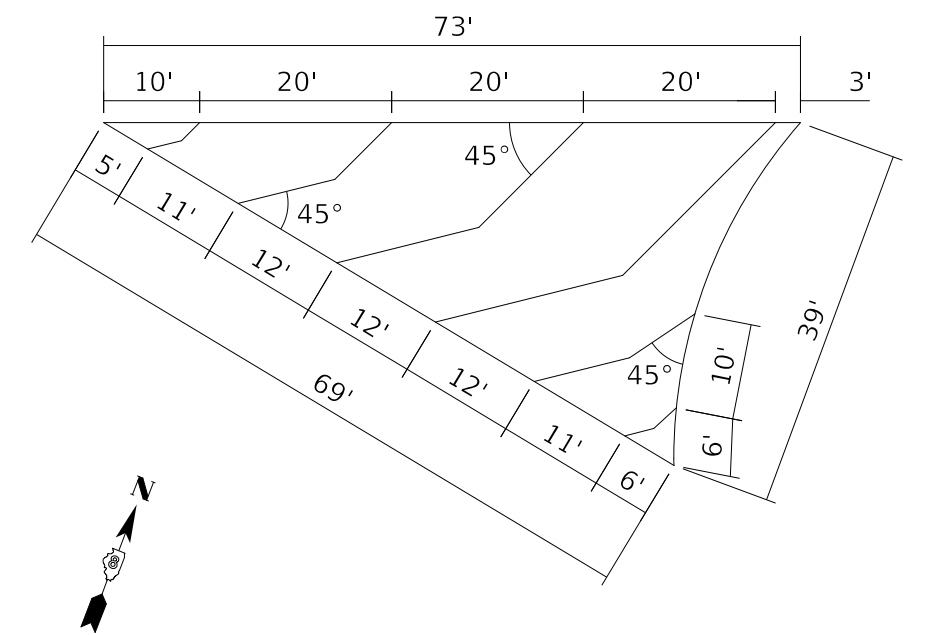
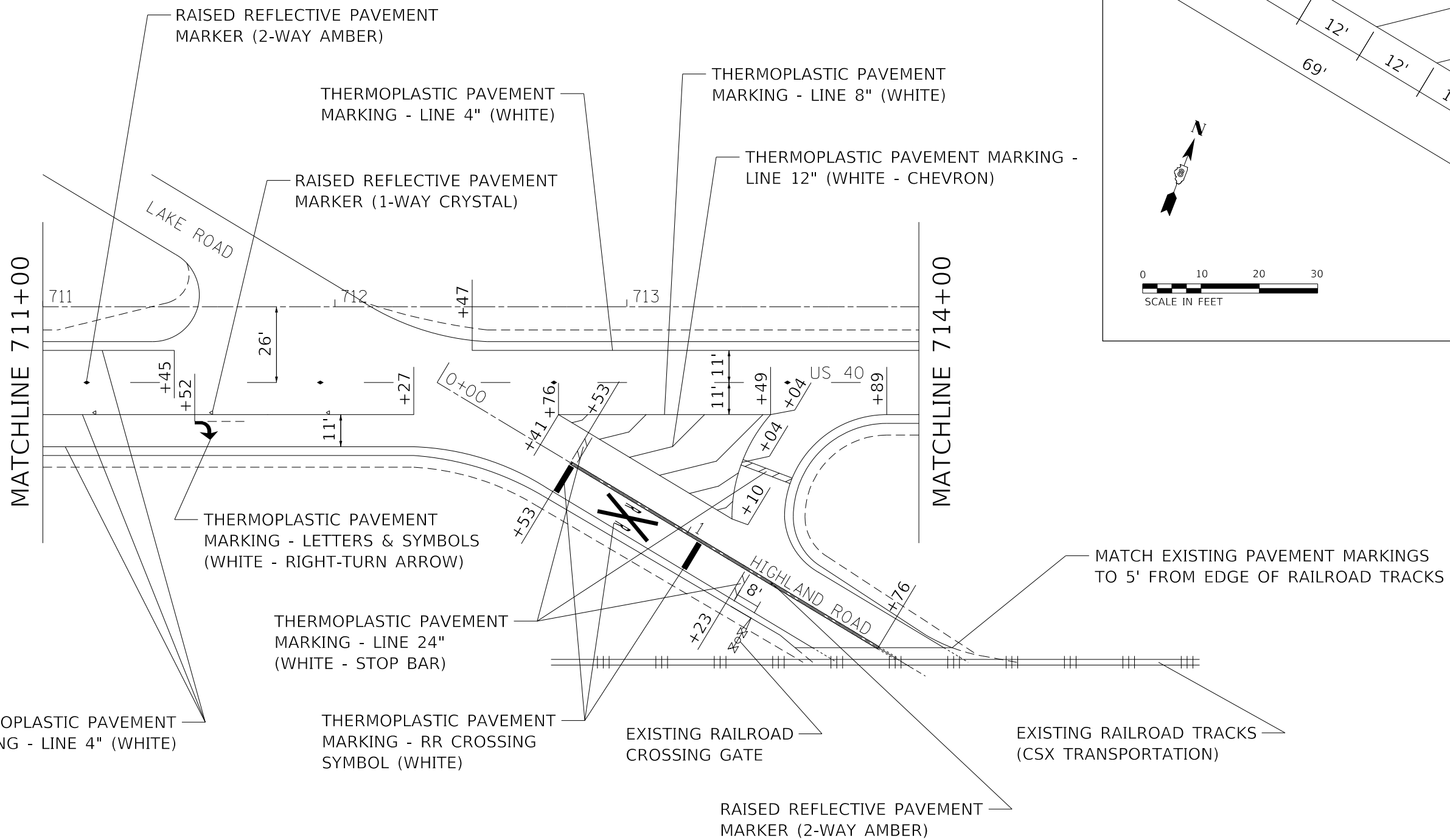
USER NAME = humphreysb	DESIGNED -	REVISED -
DRAWN -	REVISOR -	
PLOT SCALE = 40.0000 ' / in.	CHECKED -	REVISOR -
PLOT DATE = 11/26/2019	DATE -	REVISOR -

**STATE OF ILLINOIS  
DEPARTMENT OF TRANSPORTATION**

**PAVEMENT MARKING DETAILS**

SCALE: 1" = 10' SHEET 1 OF 3 SHEETS STA. 707+17 TO STA. 711+00

F.A.P. RTE.	SECTION	COUNTY	TOTAL SHEETS	SHEET NO.
793	R-1PP-1	MADISON	12	10
CONTRACT NO. 76N26				
ILLINOIS FED. AID PROJECT				



**HIGHLAND ROAD  
ISLAND DETAIL**



MODEL: Default  
 FILE: \\harc\p\pub\harcroom\dat\illinois\gov\p\w\DOT\Documents\DOT\_Offices\Dir\ct @ Projects\076N26\CADD\Drawings\DOT\_Offices\Dir\ct @ Projects\076N26\hrc-detailed.dgn

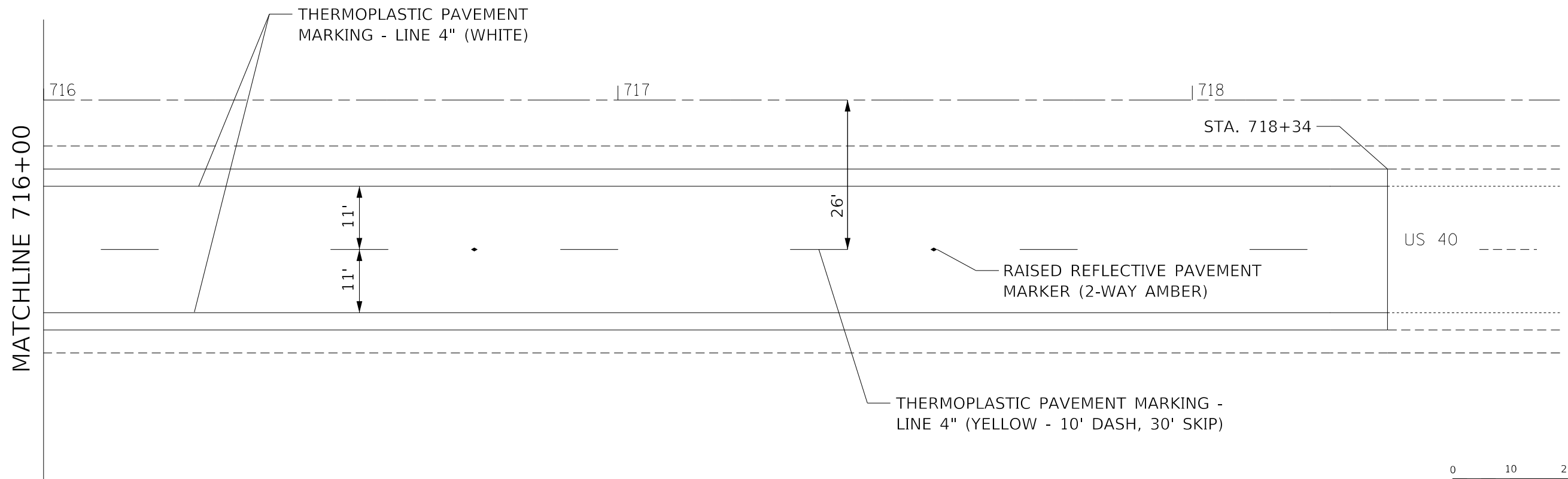
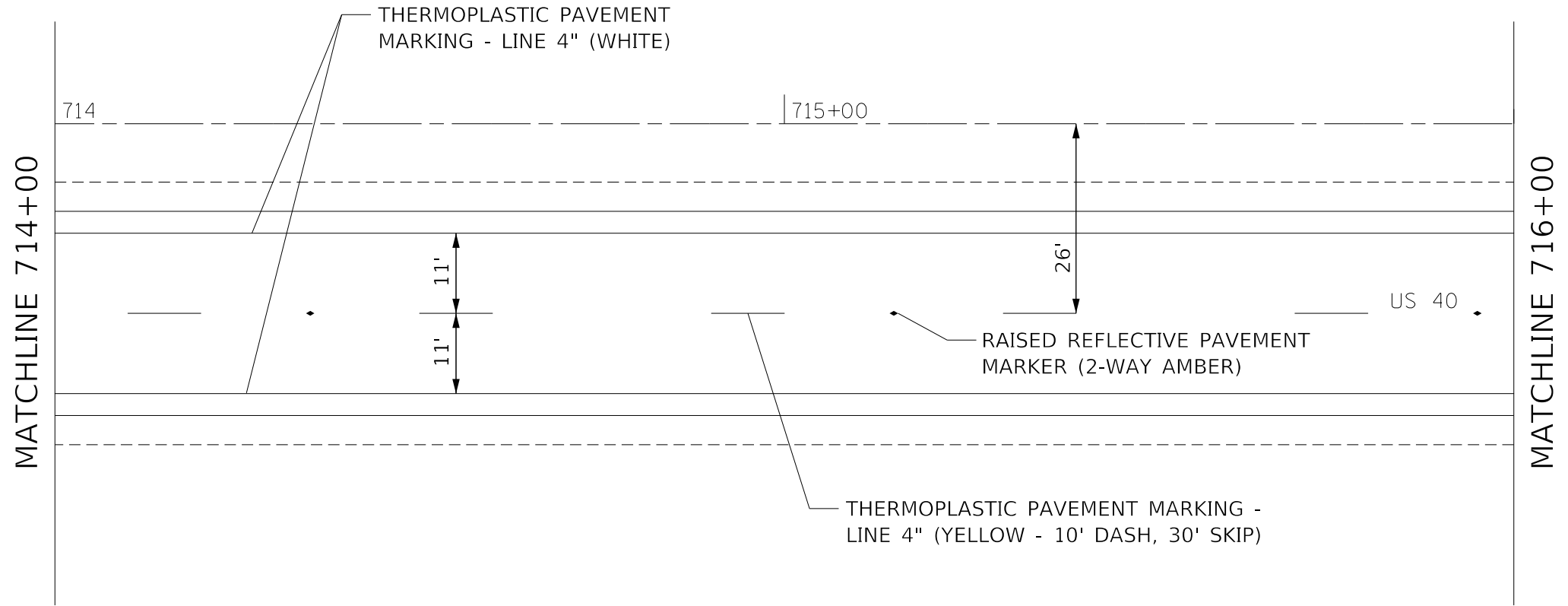
USER NAME = humphreysb	DESIGNED -	REVISED -
	DRAWN -	REVISED -
PLOT SCALE = 40.0000 ' / in.	CHECKED -	REVISED -
PLOT DATE = 11/26/2019	DATE -	REVISED -

**STATE OF ILLINOIS  
DEPARTMENT OF TRANSPORTATION**

**PAVEMENT MARKING DETAILS**

SCALE: 1" = 20' SHEET 2 OF 3 SHEETS STA. 711+00 TO STA. 714+00

F.A.P. RTE.	SECTION	COUNTY	TOTAL SHEETS	SHEET NO.
793	R-1PP-1	MADISON	12	11
CONTRACT NO. 76N26				
ILLINOIS FED. AID PROJECT				



MODEL: Default  
FILE: \\nrc\p\pub\p\room\dat\illinois.gov\p\w\DOT\Documents\DOT\_Offices\District\_8\Projects\076N26\CADD\ataCAD\sheet\076N26-shc-detailed.dgn

USER NAME = humphreysb	DESIGNED -	REVISED -
	DRAWN -	REVISED -
PLOT SCALE = 40.0000 ' / in.	CHECKED -	REVISED -
PLOT DATE = 11/26/2019	DATE -	REVISED -

**STATE OF ILLINOIS  
DEPARTMENT OF TRANSPORTATION**

**PAVEMENT MARKING DETAILS**

SCALE: 1" = 10' SHEET 1 OF 1 SHEETS STA. 714+00 TO STA. 718+34

F.A.P. RTE.	SECTION	COUNTY	TOTAL SHEETS	SHEET NO.
793	R-1PP-1	MADISON	12	12
CONTRACT NO. 76N26				
ILLINOIS FED. AID PROJECT				