

STATE OF ILLINOIS
DEPARTMENT OF TRANSPORTATION

**PROPOSED
HIGHWAY PLANS**

ROUTE: VARIOUS
ROUTE: VARIOUS (PROJECT RELATED)
SECTION: 2019-179-LS
TREE REMOVAL
VARIOUS COUNTIES

C-91-145-20

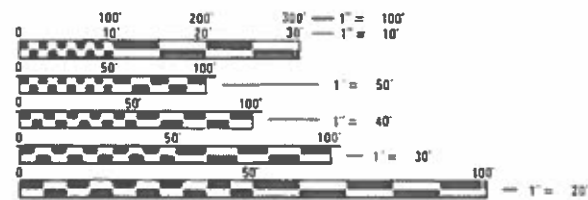
| F.A. RTE. | SECTION | COUNTY | TOTAL SHEETS | SHEET NO. |
|-----------------------------|-------------|---------|--------------|-----------|
| VAR | 2019-179-LS | VARIOUS | 8 | 1 |
| ILLINOIS CONTRACT NO. 62K52 | | | | |

D-91-346-20



FOR INDEX OF SHEETS, SEE SHEET NO. 2

IMPROVEMENT IS IN VARIOUS
LOCATIONS WITHIN DISTRICT
ONE

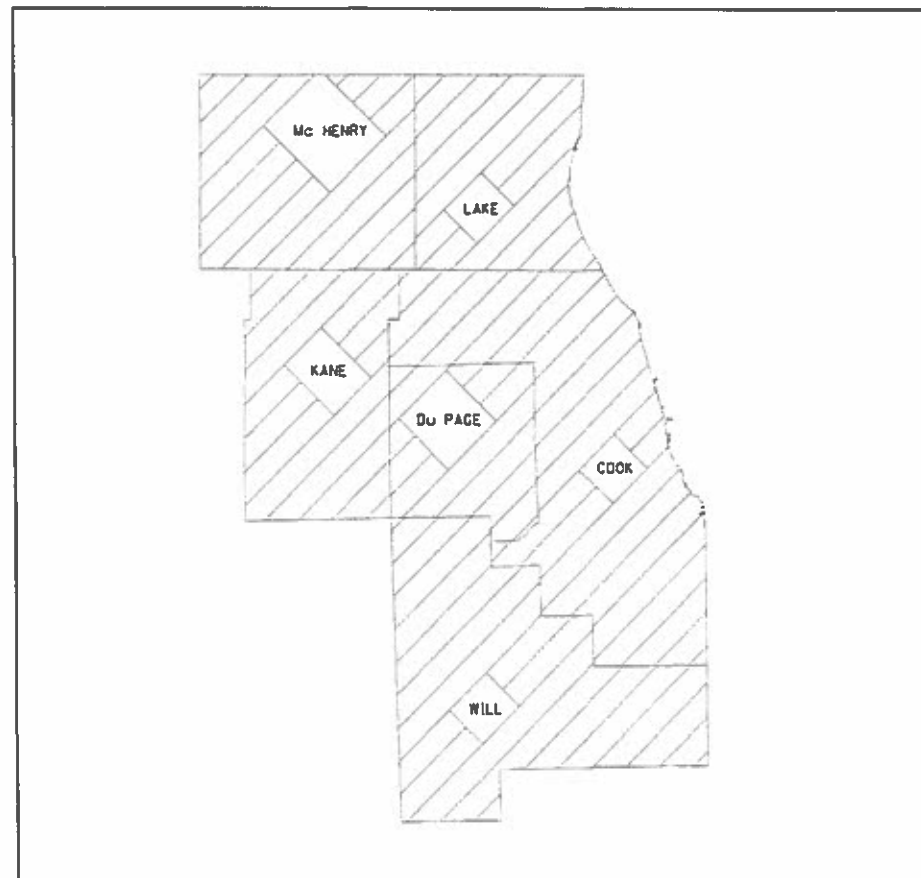


FULL SIZE PLANS HAVE BEEN PREPARED USING STANDARD ENGINEERING SCALES. REDUCED SIZED PLANS WILL NOT CONFORM TO STANDARD SCALES IN MAKING MEASUREMENTS ON REDUCED PLANS, THE ABOVE SCALES MAY BE USED.

J.U.L.I.E.
JOINT UTILITY LOCATION INFORMATION FOR EXCAVATION
1-800-892-0123
OR 811

PROJECT ENGINEER J. ALAIN MIDY (847)221-3056
PROJECT MANAGER FAWAD AQUEEL (847)705-4247

CONTRACT NO. 62K52



STATE OF ILLINOIS
DEPARTMENT OF TRANSPORTATION

SUBMITTED DECEMBER 12, 2019

Anthony D. ...
REGIONAL ENGINEER

Jan 31, 2020
ENGINEER OF DESIGN AND ENVIRONMENT

Jan 31, 2020
DIRECTOR OF HIGHWAYS PROJECT IMPLEMENTATION

PRINTED BY THE AUTHORITY
OF THE STATE OF ILLINOIS

INDEX OF SHEETS

| SHEET NO. | DESCRIPTION |
|-----------|---|
| 1. | TITLE SHEET |
| 2. | INDEX OF SHEETS, STATE STANDARDS, AND GENERAL NOTES |
| 3. | SUMMARY OF QUANTITIES |
| 4. | SAMPLE STANDARD WORK ORDER |
| 5. | TRAFFIC CONTROL AND PROTECTION FOR SIDE ROADS, INTERSECTIONS, AND DRIVEWAYS (TC-10) |
| 6. | TRAFFIC CONTROL DETAIL FOR FREEWAY SHOULDER CLOSURES AND PARTIAL RAMP CLOSURE (TC-17) |

STATE STANDARDS

| STANDARD NO | DESCRIPTION |
|-------------|--|
| 701001-02 | OFF-RD OPERATIONS, 2L, 2W, MORE THAN 15' AWAY |
| 701006-05 | OFF-RD OPERATIONS, 2L, 2W, 15' TO 24" FROM PAVEMENT EDGE |
| 701101-05 | OFF-RD OPERATIONS, MULTILANE, 15' TO 24" FROM PAVEMENT EDGE |
| 701106-02 | OFF-RD OPERATIONS, MULTILANE, MORE THAN 15' AWAY |
| 701201-05 | LANE CLOSURE, 2L, 2W, DAY ONLY, FOR SPEEDS ≥ 45 MPH |
| 701301-04 | LANE CLOSURE, 2L, 2W, SHORT TIME OPERATIONS |
| 701421-08 | LANE CLOSURE, MULTILANE, DAY OPERATIONS ONLY FOR SPEEDS ≥ 45 MPH TO 55 MPH |
| 701501-06 | URBAN LANE CLOSURE, 2L, 2W, UNDIVIDED |
| 701601-09 | URBAN LANE CLOSURE, MULTILANE, 1W OR 2W WITH NONTRAVERSABLE MEDIAN |
| 701606-10 | URBAN SINGLE LANE CLOSURE, MULTILANE, 2W WITH MOUNTABLE MEDIAN |
| 701701-10 | URBAN LANE CLOSURE, MULTILANE INTERSECTION |
| 701801-06 | SIDEWALK, CORNER OR CROSSWALK CLOSURE |
| 701901-08 | TRAFFIC CONTROL DEVICES |

GENERAL NOTES:

BEFORE STARTING ANY EXCAVATION, THE CONTRACTOR SHALL CALL "JULIE" AT 800-892-0123 OR 811 FOR FIELD LOCATIONS OF BURIED ELECTRIC, TELEPHONE AND GAS FACILITIES (48 HOUR NOTIFICATION IS REQUIRED).

THE CONTRACTOR SHALL CONTACT THE DISTRICT ONE TRAFFIC CONTROL SUPERVISOR AT (847) 705-4470, A MINIMUM OF 72 HOURS IN ADVANCE OF BEGINNING OF WORK.

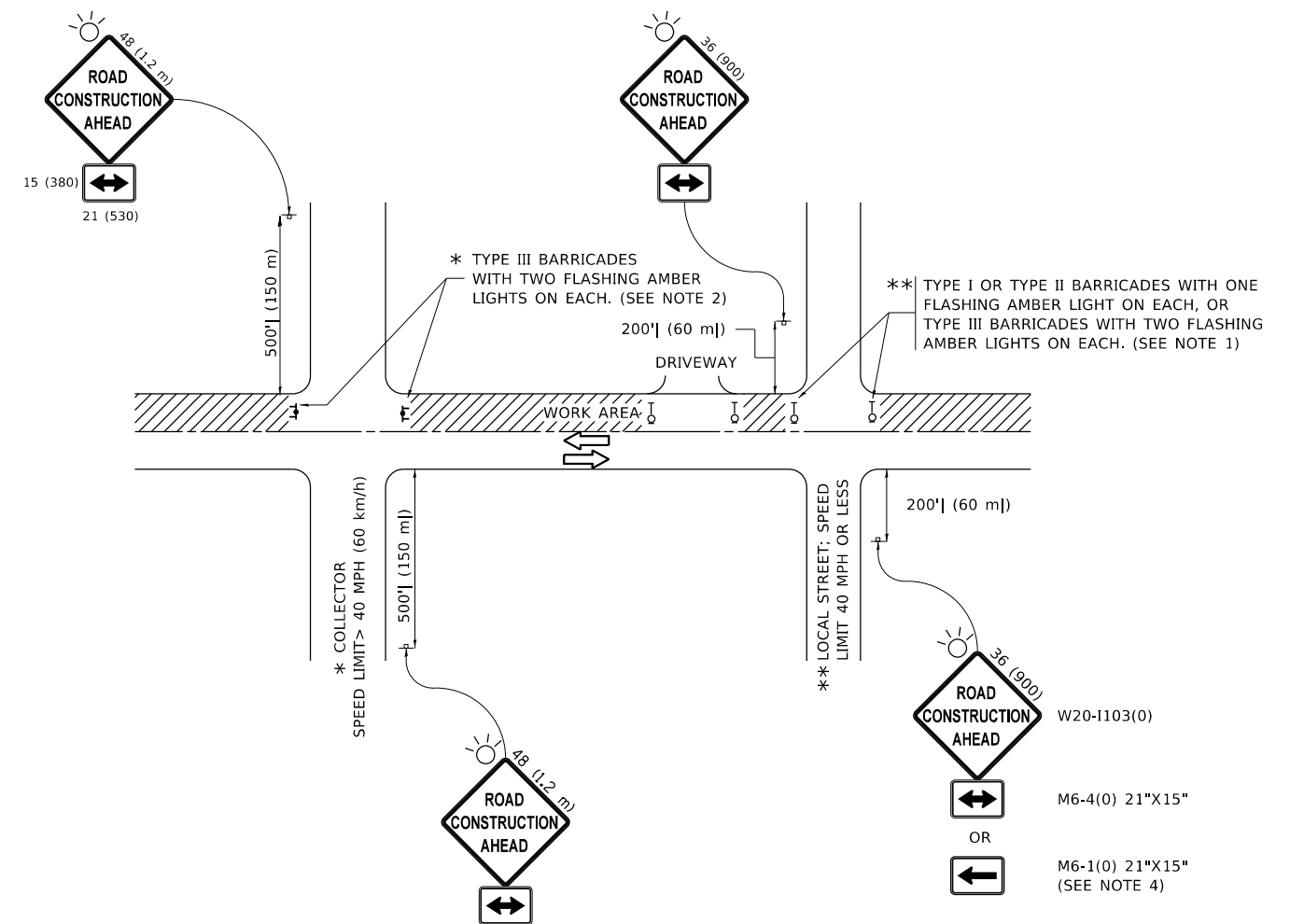
THE CONTRACTOR WILL NOT BE ALLOWED TO SET UP YARD OR FIELD OFFICE ON STATE PROPERTY WITHOUT WRITTEN PERMISSION FROM THE DEPARTMENT.

THE CONTRACTOR SHALL BE REQUIRED TO PROVIDE ACCESS TO ABUTTING PROPERTY AT ALL TIMES DURING THE CONSTRUCTION OF THIS PROJECT.

THE CONSTRUCTION LIMITS WILL BE STAKED AND APPROVED BY THE ENGINEER PRIOR TO COMMENCING CONSTRUCTION. THE CONSTRUCTION LIMITS MAY BE ADJUSTED BY THE ENGINEER TO PRESERVE TREES AND NO ADDITIONAL COMPENSATION WILL BE PAID TO THE CONTRACTOR FOR CHANGES IN CONSTRUCTION LIMITS.

DURING CONSTRUCTION OPERATIONS, WHEN ANY LOOSE MATERIAL IS DEPOSITED IN THE FLOW LINE OF DITCHES, GUTTERS, OR DRAINAGE STRUCTURES SO THAT THE NATURAL FLOW OF WATER IS OBSTRUCTED, THE MATERIAL SHALL BE REMOVED AT THE CLOSE OF EACH WORKING DAY. THIS WORK IS CONSIDERED AS PART OF CLEAN-UP.

| | | | | | | | | | | | | |
|---|------------------------------|------------|-----------|---|--|-------|----|---------------------------|-------------|---------|--------------|-----------|
| FILE NAME = | USER NAME = midyja | DESIGNED - | REVISED - | STATE OF ILLINOIS DEPARTMENT OF TRANSPORTATION | INDEX OF SHEETS, STATE STANDARDS, AND GENERAL NOTES | | | F.A. RTÉ. | SECTION | COUNTY | TOTAL SHEETS | SHEET NO. |
| p:\planroom.dot.illinois.gov\PIDOT\Documents\IDOT Offices\District 1\Projects\0134016\DRAWN\Design\0134016-Design.dgn | | CHECKED - | REVISED - | | | | | VAR | 2019-179-LS | VARIOUS | 6 | 2 |
| Default | PLOT SCALE = 100.0000' / in. | DATE - | REVISED - | | CONTRACT NO. 62K52 | | | ILLINOIS FED. AID PROJECT | | | | |
| | PLOT DATE = 12/13/2019 | | | | SCALE: | SHEET | OF | SHEETS | STA. | TO | STA. | |



NOTES:

- SIDE ROAD WITH A SPEED LIMIT OF 40 MPH (60 km/h) OR LESS AS SHOWN ON THE DRAWING AND AS DIRECTED BY THE ENGINEER:
 - ONE "ROAD CONSTRUCTION AHEAD" SIGN 36 x 36 (900x900) WITH A FLASHER MOUNTED ON IT APPROXIMATELY 200' (60 m) IN ADVANCE OF THE MAIN ROUTE.
 - THE CLOSED PORTION OF THE MAIN ROUTE SHALL BE PROTECTED BY BLOCKING WITH TYPE I, TYPE II OR TYPE III BARRICADES, 1/3 OF THE CROSS SECTION OF THE CLOSED PORTION.
- SIDE ROAD WITH A SPEED LIMIT GREATER THAN 40 MPH (60 km/h) AS SHOWN ON THE DRAWING AND AS DIRECTED BY THE ENGINEER:
 - ONE "ROAD CONSTRUCTION AHEAD" SIGN 48 x 48 (1.2 m x 1.2 m) WITH A FLASHER MOUNTED ON IT APPROXIMATELY 500' (150 m) IN ADVANCE OF THE MAIN ROUTE.
 - THE CLOSED PORTION OF THE MAIN ROUTE SHALL BE PROTECTED BY BLOCKING WITH TYPE III BARRICADES, 1/2 OF THE CROSS SECTION OF THE CLOSED PORTION.
- CONES MAY BE SUBSTITUTED FOR BARRICADES OR DRUMS AT HALF THE SPACING DURING DAY OPERATIONS. CONES SHALL BE A MINIMUM OF 28 (710) IN HEIGHT.
- SIGNING AND THE WORK ZONE, A SINGLE HEADED ARROW (M6-1) SHALL BE USED IN LIEU OF THE DOUBLE HEADED ARROW (M6-4).
- WHEN WORK IS BEING PERFORMED ON A SIDE ROAD OR DRIVEWAY, FOLLOW THE APPLICABLE STANDARD(S). THE DIRECTIONAL ARROW (M6-1 OR M6-4) SHALL BE COVERED OR REMOVED WHEN NO LONGER CONSISTENT WITH THE TRAFFIC CONTROL SET-UP.
- ADVANCE WARNING SIGNS ARE TO BE OMITTED ON DRIVEWAYS UNLESS OTHERWISE SPECIFIED IN THE PLANS OR BY THE ENGINEER.
- THE TRAFFIC CONTROL AND PROTECTION FOR SIDE ROADS, INTERSECTIONS, AND DRIVEWAYS SHALL BE INCLUDED IN THE COST OF SPECIFIED TRAFFIC CONTROL STANDARDS OR ITEMS.

All dimensions are in inches (millimeters) unless otherwise shown.

MODEL: Default
FILE: \\nrcs\p\pub\p\room\dat\illinois\gov\p\w\dot\Documents\DOT_Offices\Director_1\Projects\134016\CADD\Drawings\134016-Design.dgn

| | | |
|------------------------------|-------------------|---------------------------------|
| USER NAME = midyja | DESIGNED - L.H.A. | REVISED - A. HOUSEH 10-15-96 |
| PLOT SCALE = 100.0000' / in. | CHECKED - | REVISED - T. RAMMACHER 01-06-00 |
| PLOT DATE = 12/13/2019 | DATE - 06-89 | REVISED - A. SCHUETZE 07-01-13 |
| | | REVISED - A. SCHUETZE 09-15-16 |

**STATE OF ILLINOIS
DEPARTMENT OF TRANSPORTATION**

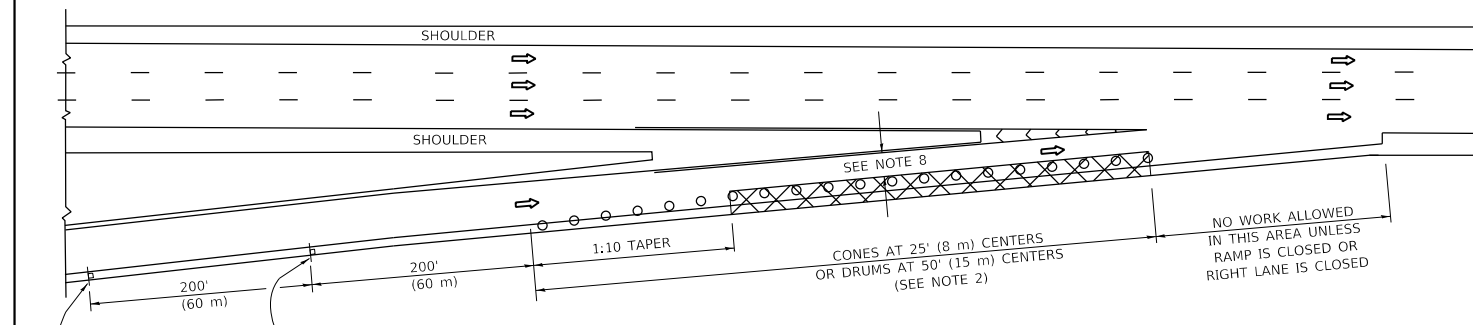
**TRAFFIC CONTROL AND PROTECTION FOR
SIDE ROADS, INTERSECTIONS, AND DRIVEWAYS**

SCALE: NONE SHEET 1 OF 1 SHEETS STA. TO STA.

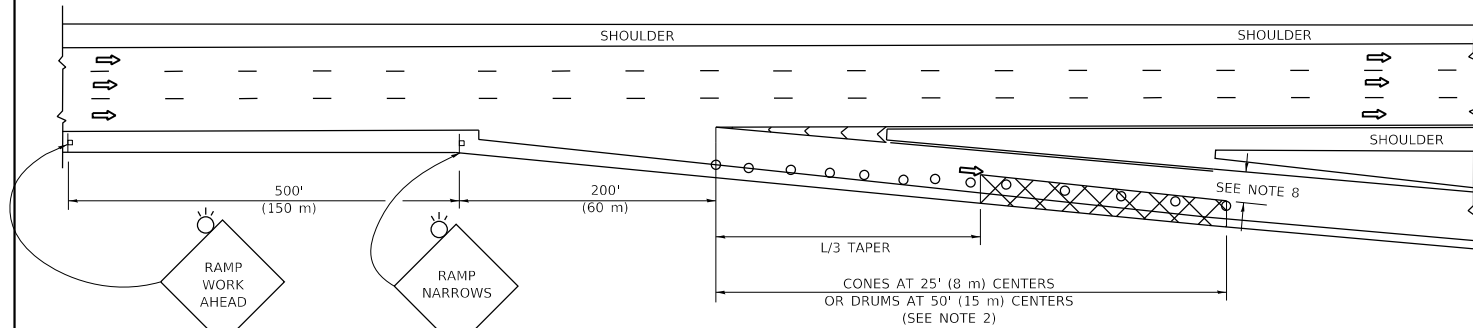
| | | | | |
|---------------------------|-------------|---------|--------------------|-----------|
| F.A. RTE. | SECTION | COUNTY | TOTAL SHEETS | SHEET NO. |
| VAR | 2019-179-LS | VARIOUS | 6 | 5 |
| TC-10 | | | CONTRACT NO. 62K52 | |
| ILLINOIS FED. AID PROJECT | | | | |

PARTIAL RAMP CLOSURE DETAILS

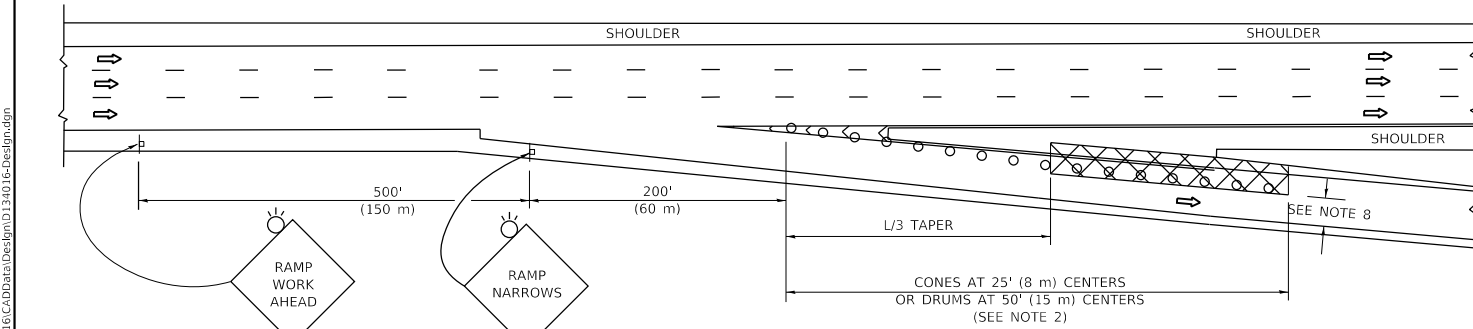
SHOULDER CLOSURE DETAILS



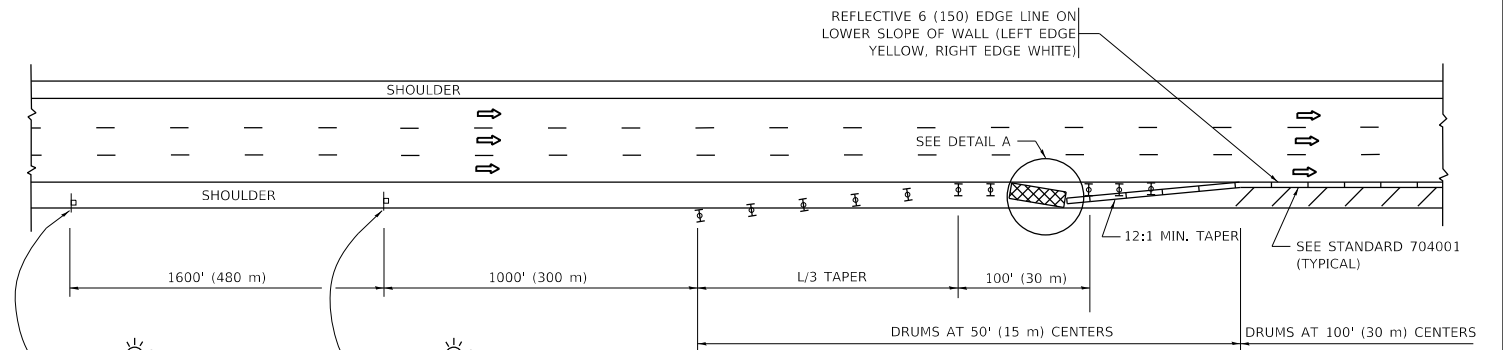
TYPICAL ENTRANCE RAMP



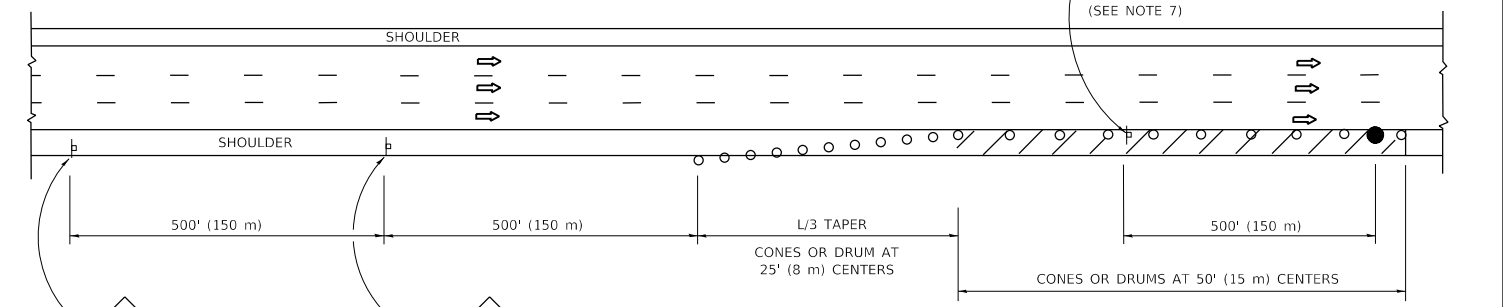
TYPICAL EXIT RAMP



TYPICAL EXIT RAMP



PERMANENT SHOULDER CLOSURE



DAYTIME SHOULDER CLOSURE

THIS DETAIL IS USED WHERE:
 1. VEHICLES, EQUIPMENT, WORKERS OR THEIR ACTIVITIES ENCR OACH IN AN AREA CLOSER THAN 15' (4.5 m) TO THE EDGE OF PAVEMENT FOR A PERIOD IN EXCESS OF 15 MINUTES.



ARRAY DESIGN PER MANUFACTURER TO BE NCHRP 350/MASH COMPLIANT.

**DETAIL "A"
 IMPACT ATTENUATOR, TEMPORARY
 (SEE NOTE 5)**

ALL DIMENSIONS ARE IN INCHES (MILLIMETERS) UNLESS OTHERWISE SHOWN.

SYMBOLS

- ACTIVE WORK AREA
- SIGN ON PORTABLE OR PERMANENT SUPPORT
- FLAGGER WITH CONTROL SIGN
- TYPE II BARRICADE OR DRUM
- CONE, DRUM OR BARRICADE
- IMPACT ATTENUATOR OF TYPE AND TEST LEVEL SPECIFIED

GENERAL NOTES:

1. THE "L" DISTANCE EQUALS:

| | |
|------------------|--------------------------------------|
| SPEED LIMIT | FORMULAS |
| 45 mph (80 km/h) | METRIC ENGLISH |
| OR GREATER: | $L = 0.65(WXS)$ $L = (WXS)$ |
| | W = WIDTH OF OFFSET IN FEET (METERS) |
| | S = NORMAL POSTED SPEED MPH (KM/H) |
2. TYPE II BARRICADES OR DRUMS ARE REQUIRED FOR ALL NIGHTTIME CLOSURES. TYPE II BARRICADES OR DRUMS WITH MONODIRECTIONAL STEADY BURN LIGHTS ARE REQUIRED FOR DELINEATING OBSTACLES, EXCAVATIONS, OR HAZARDS EXCEEDING 100 FT (30m) IN LENGTH AT NIGHT.
3. ALL SIGNS SHALL BE POST MOUNTED IF THE CLOSURE TIME EXCEEDS FOUR DAYS.
4. FLASHING LIGHTS SHALL BE USED DURING THE HOURS OF DARKNESS AND SHALL BE INSTALLED ABOVE THE FIRST TWO SETS OF SIGNS.

5. THE IMPACT ATTENUATOR, TEMPORARY IS NOT REQUIRED WHEN THE TEMPORARY CONCRETE BARRIER WALL IS PROTECTED BY OR IS TIED INTO THE EXISTING GUARDRAIL. IF OFFSET IS LESS THAN 5 FEET USE NARROW USE TYPE DEVICE TO MEET NCHRP350/MASH.
6. AUTHORIZATION FROM THE DISTRICT'S BUREAU OF TRAFFIC IS REQUIRED FOR ALL FREEWAY CLOSURES.
7. THE FLAGGER AND FLAGGER SIGN ARE REQUIRED AT THE ABOVE WORK SITES WHEN:
 - a. FOUR OR MORE WORK VEHICLES ENTER THE TRAFFIC LANES IN A ONE HOUR PERIOD.
 - b. THE WORK AVTTIVITY REQUIRES FREQUENT ENCR OACHMENT INTO THE LANE OPEN TO TRAFFIC.
 THE FLAGGER SHALL BE STATIONED APPROXIMATELY 100' (30 m) TO 200' (60 m) IN ADVANCE OF THE WORKERS.
8. 12' MIN. WIDTH TANGENT SECTION
 16' MIN. WIDTH CURVE SECTION.

MODEL: Default
 FILE: \\nchrp.com\data\illinois\pww\DOT\Documents\DOT - Offices\Distctc - 1\Projects\4134016\CADD\Design\0134016-Design.dgn

| | | |
|------------------------------|----------------|------------------------|
| USER NAME = midyja | DESIGNED - | REVISED - S.P.B. 01-07 |
| | DRAWN - D.W.S. | REVISED - S.P.B. 12-09 |
| PLOT SCALE = 100.0000' / in. | CHECKED - | REVISED - M.D. 06-13 |
| PLOT DATE = 12/13/2019 | DATE - 11-96 | REVISED - M.D. 01-18 |

**STATE OF ILLINOIS
 DEPARTMENT OF TRANSPORTATION**

| | | | |
|---|---------|-------------|--------------|
| TRAFFIC CONTROL DETAILS FOR FREEWAY SHOULDER CLOSURES AND PARTIAL RAMP CLOSURES | | | |
| SCALE: NONE | SHEET 1 | OF 1 SHEETS | STA. TO STA. |

| | | | | |
|---------------------------|-------------|--------------------|--------------|-----------|
| F.A. RTE. | SECTION | COUNTY | TOTAL SHEETS | SHEET NO. |
| VAR | 2019-179-LS | VARIOUS | 6 | 6 |
| TC-17 | | CONTRACT NO. 62K52 | | |
| ILLINOIS FED. AID PROJECT | | | | |