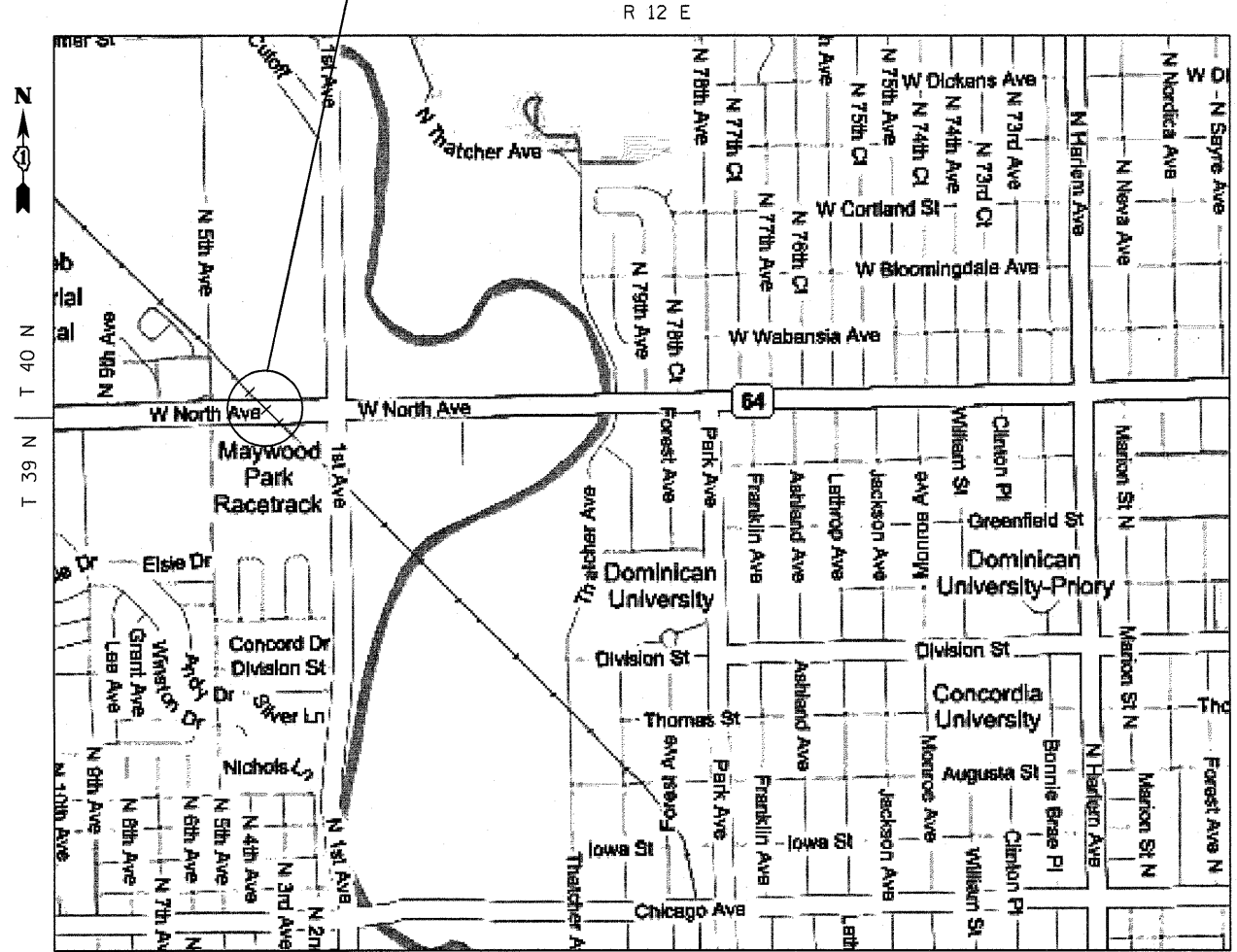


LOCATION 3: W.C. RR
OVER IL 64 (NORTH AVE.)
SN 016-0500 EAST BRIDGE
SN 016-1126 WEST BRIDGE

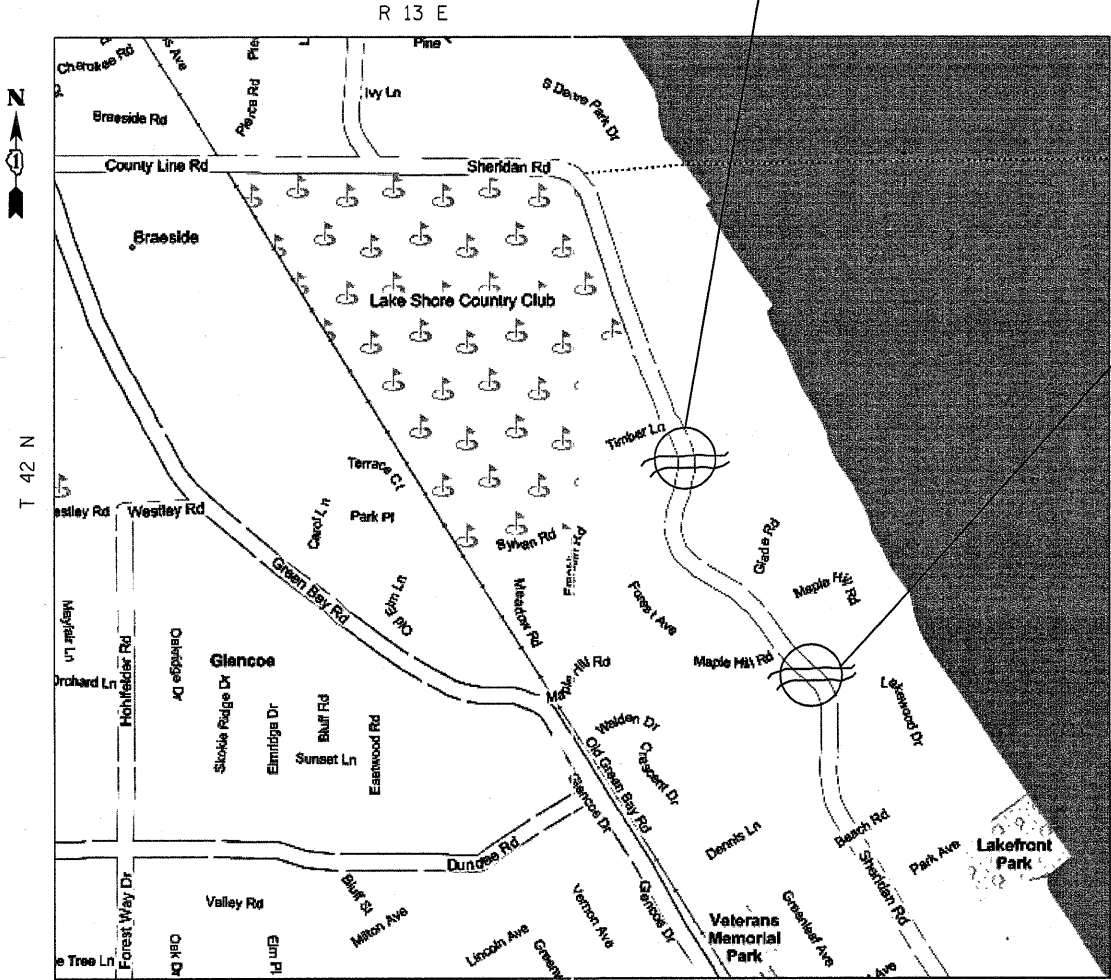
LOCATION 4: SHERIDAN RD
OVER RAVINE No 1
SN 016-0617

LOCATION 5: SHERIDAN RD
OVER RAVINE No 2
SN 016-0618



LEYDEN TOWNSHIP
CITY OF MELROSE PARK, COOK COUNTY

(IL 64-NORTH AVE.)
TRAFFIC DATA:
2005 ADT= 19350
POSTED SPEED LIMIT: 40 MPH



NEW TRIER TOWNSHIP
VILLAGE OF GLENCOE, COOK COUNTY

(SHERIDAN RD.)
TRAFFIC DATA:
2005 ADT= 3500
POSTED SPEED LIMIT: 30 MPH

FILE NAME = c:\proje\cts\dl20507\1171847.thdgn	USER NAME = midyja	DESIGNED -	REVISED -	STATE OF ILLINOIS DEPARTMENT OF TRANSPORTATION	LOC 3, LOC 4 & LOC 5 LOCATION MAPS			F.A. RTE. =	SECTION	COUNTY	TOTAL SHEETS	SHEET NO.			
	PLOT SCALE = 50.0000' / IN.	DRAWN -	REVISED -		SCALE:	SHEET NO.	OF	SHEETS	STA.	TO STA.	VARIOUS	2007-0071	VARIOUS	25	3
	PLOT DATE = 12/28/2007	CHECKED -	REVISED -												
		DATE -	REVISED -												
											CONTRACT NO. 60C36				
											FED. ROAD DIST. NO. 1 ILLINOIS FED. AID PROJECT				