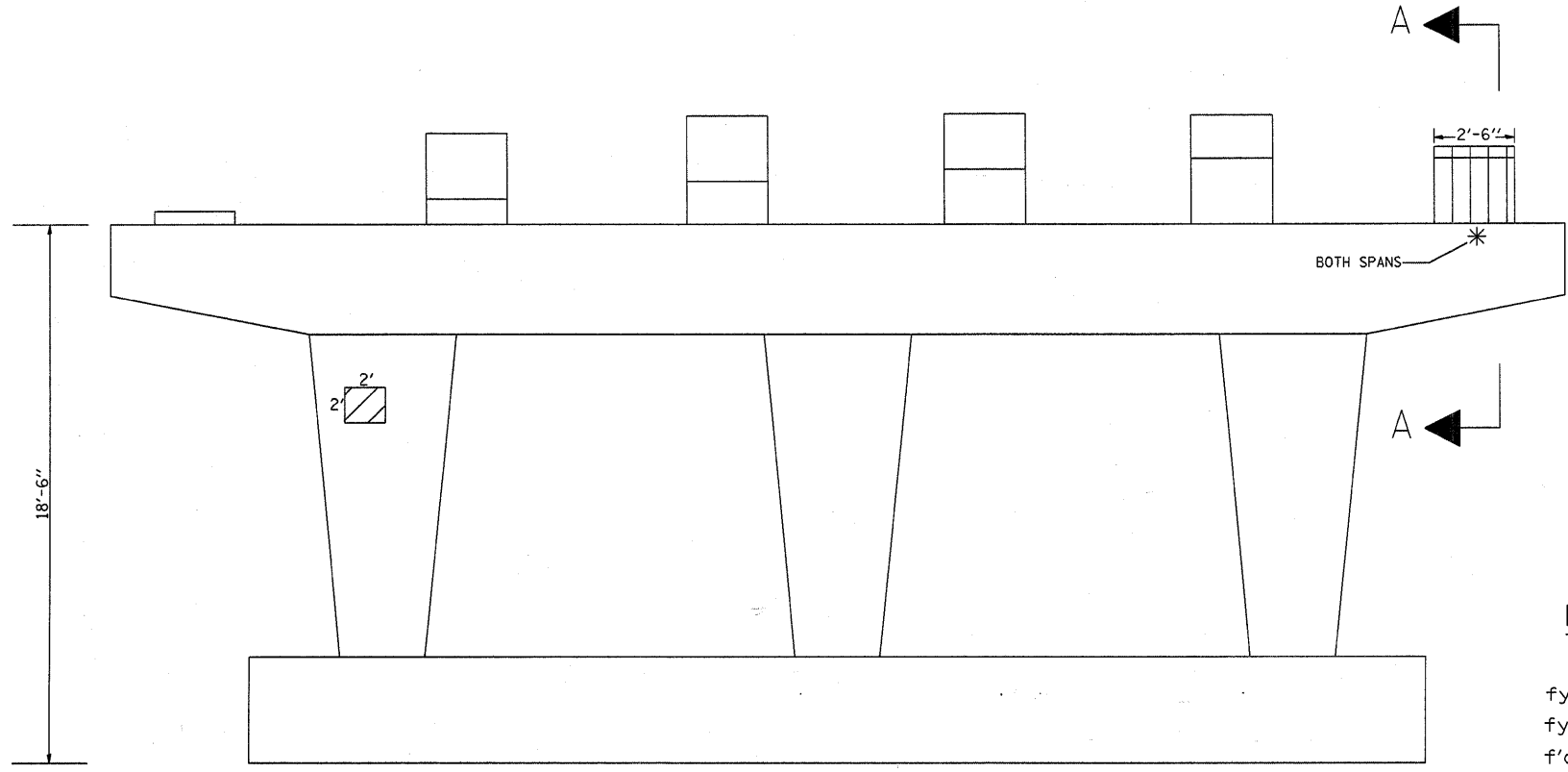


PIER 1 (NORTH FACE)
(LOOKING SOUTH)



PIER 2 (SOUTH FACE)
(LOOKING NORTH)

* TEMPORARY SHORING AND CRIBBING

PIER 1 BILL OF MATERIAL	UNIT	QUANTITY
STRUCTURAL REPAIR OF CONCRETE > 5"	SQ FT	16
TEMPORARY SHORING AND CRIBBING	EA	4

BEAM REACTIONS TABLE

D.L.	62.6 K
L.L.	43.5 K
IMP.	9.7 K
TOTAL	115.8 K

PIER 1 & 2
SPAN 2

BEAM REACTIONS TABLE

D.L.	22 K
L.L.	36.8 K
IMP.	11 K
TOTAL	69.8 K

PIER 1 & 2
SPAN 1 & 3

PIER 2 BILL OF MATERIAL	UNIT	QUANTITY
STRUCTURAL REPAIR OF CONCRETE > 5"	SQ FT	15
STRUCTURAL REPAIR OF CONCRETE ≤ 5"	SQ FT	4
TEMPORARY SHORING AND CRIBBING	EA	2
CONCRETE REMOVAL	CU YD	.3
CONCRETE STRUCTURES	CU YD	.3
REINFORCEMENT BARS, EPOXY COATED	POUND	70
FURNISHING & ERECTING STRUCTURAL STEEL	POUND	200
ANCHOR BOLTS, 1"Ø	EACH	4

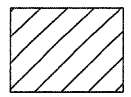
DESIGN STRESSES

FIELD UNITS
 $f_y = 60,000^*$ (REINFORCEMENT)
 $f_y = 36,000^*$ (AASHTO M-270 GR 36)
 $f'_c = 3,500$ psi

* psi



STRUCTURAL REPAIR OF CONCRETE > 5"



STRUCTURAL REPAIR OF CONCRETE ≤ 5"



CONCRETE REMOVAL & CONCRETE STRUCTURES