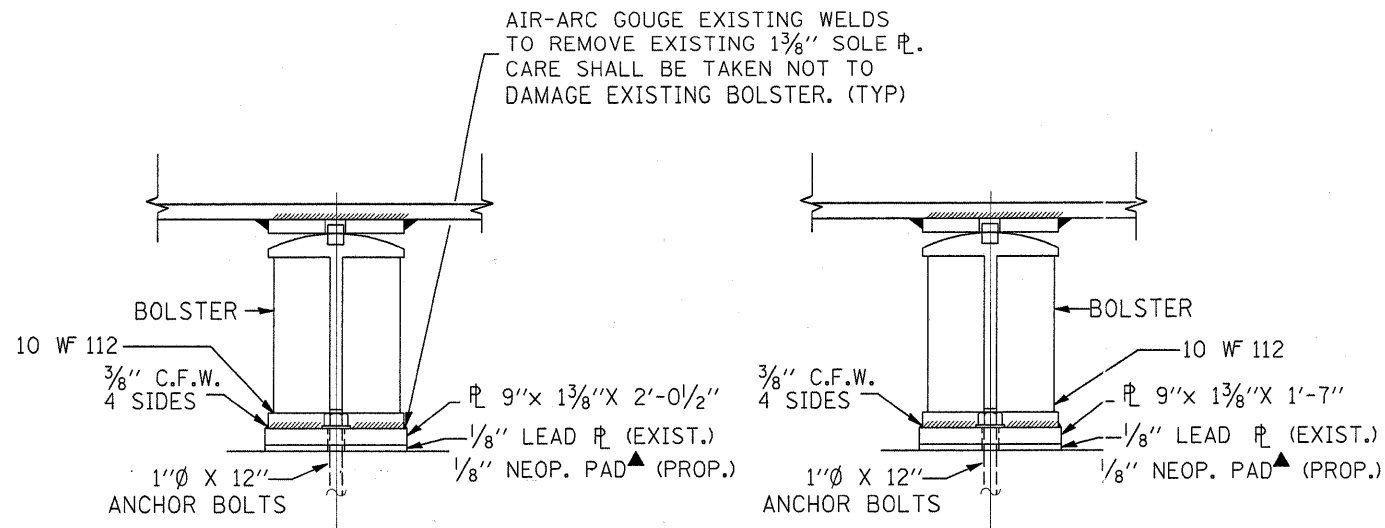


SECTION A-A



ELEVATION  
AT PIER 2 SPAN 2

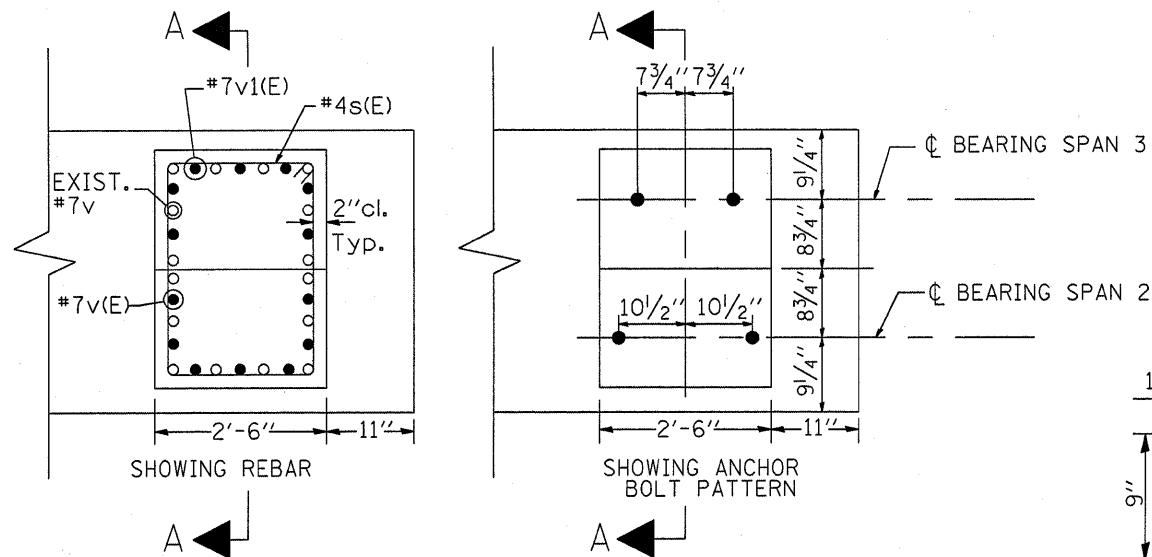
ELEVATION  
AT PIER 2 SPAN 3

▲ New 1/8" elastomeric neoprene leveling pad according to Article 1052.02 of the Standard Specifications. Cost included with Structural Steel.

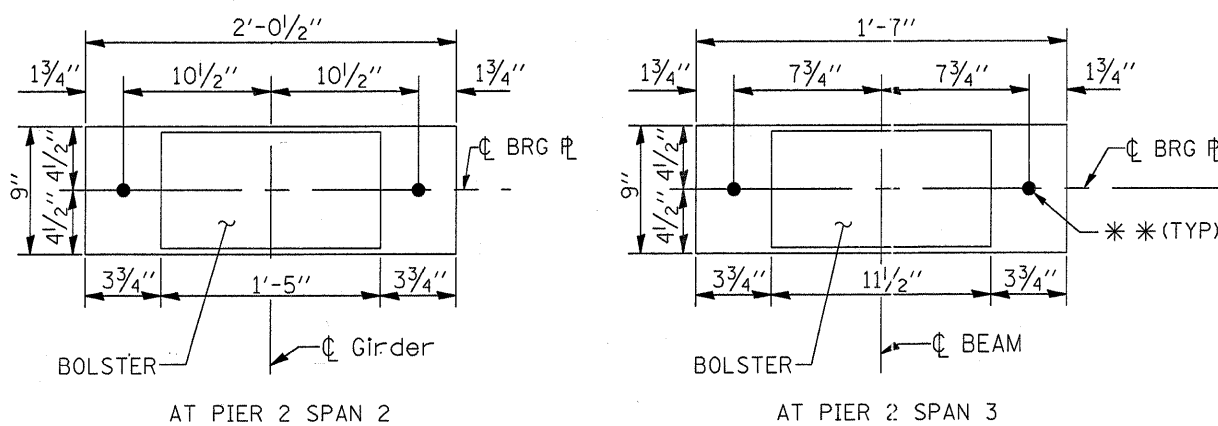
BAR LIST

BAR	NO	SIZE	LENGTH	SHAPE
s(E)	3	#4	9'-10"	
v(E)	7	#7	1'-7"	
v1(E)	7	#7	1'-10"	

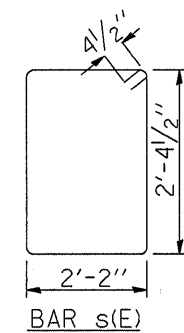
REINFORCEMENT BARS DESIGNATED (E) SHALL BE EPOXY COATED



DETAIL A  
PLAN VIEW



PLAN VIEW  
SHOWING SOLE PLATE



\* DRILL & EPOXY GROUT 9" MINIMUM INTO THE EXISTING CONCRETE ACCORDING TO ART. 584 OF THE STD. SPECS.

▲▲ CLEAN, STRAIGHTEN & INCORPORATE EXISTING VERTICAL REINFORCEMENT INTO NEW CONSTRUCTION.

NOTE:

REMOVE EXIST. SOLE-PS, LEAD PS AND ANCHOR BOLTS. COST OF REMOVAL INCLUDED IN THE COST OF CONCRETE REMOVAL. INSTALL NEW SOLE PS, 1/8" NEOP. PADS & ANCHOR BOLTS WITH PL WASHERS & NUTS.

PRIOR TO ORDER ANY MATERIAL, THE CONTRACTOR SHALL VERIFY IN THE FIELD ALL BEARING HEIGHT AND SHIM THICKNESS DIMENSIONS

\* \* 1 1/2" Ø HOLES FOR 1" Ø ANCHOR BOLTS  
2 1/2" X 2 1/2" X 5/16" PL WASHERS UNDER NUT.

FILE NAME = c:\proje\jcts\d120507\11171047.thdgn	USER NAME = mdyja	DESIGNED -	REVISED -	<b>STATE OF ILLINOIS DEPARTMENT OF TRANSPORTATION</b>	<b>LOCATION 1: SN 016-1000 STRUCTURAL DETAILS</b>	F.A. RTE. -	SECTION	COUNTY	TOTAL SHEETS	SHEET NO.
PLOT SCALE = 5/8" = 1' / IN.	CHECKED -	REVISED -	VARIOUS			2007-0071	VARIOUS	25	9	
PLOT DATE = 12/20/2007	DATE -	REVISED -	SHEET 3 OF 4			CONTRACT NO. 60C36				
			SCALE: SHEET NO. OF SHEETS STA. TO STA.			FED. ROAD DIST. NO. 1 ILLINOIS FED. AID PROJECT				