

F.A. RTE.	SECTION	COUNTY	TOTAL SHEETS	SHEET NO.
VAR.	2007-007I	Cook & Dupage	23	1
FED. ROAD DIST. NO.	ILLINOIS	CONTRACT NO. 60C36		

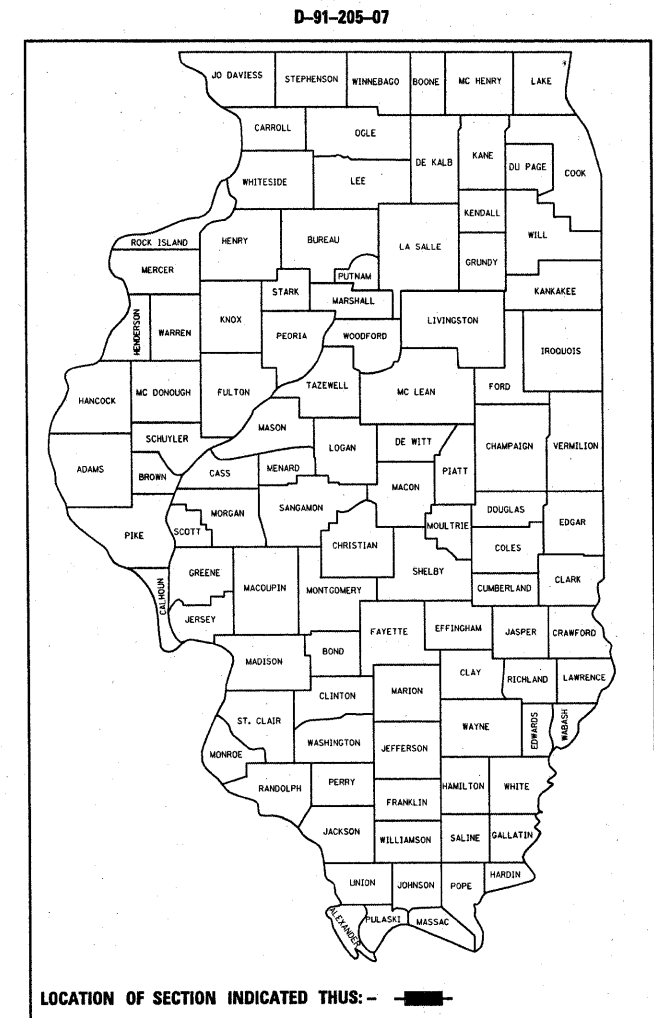
STATE OF ILLINOIS  
DEPARTMENT OF TRANSPORTATION  
DIVISION OF HIGHWAYS

**PROPOSED  
HIGHWAY PLANS**

VARIOUS ROUTE  
SECTION 2007-007 I  
STRUCTURE REPAIR OF CONCRETE  
COUNTY: COOK & DUPAGE  
C-91-205-07

FOR INDEX OF SHEETS, SEE SHEET NO. 5

IMPROVEMENTS ARE LOCATED IN THE CITIES OF MELROSE PARK AND ELMHURST AND IN THE VILLAGES OF McCOOK, ROLLING MEADOWS AND GLENCOE



- LOC 1 SN 016-1000,-1001 (IL 171 OVER 47th STREET)
- LOC 2 SN 016-0376,-1121 (IL 53 OVER KIRCHOFF RD.)
- LOC 3 SN 016-0500,-1126 (W.C. RR OVER IL 64)
- LOC 4 SN 016-0617 (SHERIDAN RD. OVER RAVINE No 1)
- LOC 5 SN 016-0618 (SHERIDAN RD. OVER RAVINE No 2)
- LOC 6 SN 022-0026 (IL 38 OVER SALT CREEK)

FOR LOCATION MAPS SEE SHEETS 2 - 4

J.U.L.I.E.  
JOINT UTILITY LOCATION INFORMATION FOR EXCAVATION  
1-800-892-0123

PROJECT ENGINEER: ROBERT BORO (847)705-4178  
PROJECT MANAGER: KEN ENG

CONTRACT NO. 60C36

STATE OF ILLINOIS  
DEPARTMENT OF TRANSPORTATION  
DIVISION OF HIGHWAYS

SUBMITTED Dec. 18 20 07

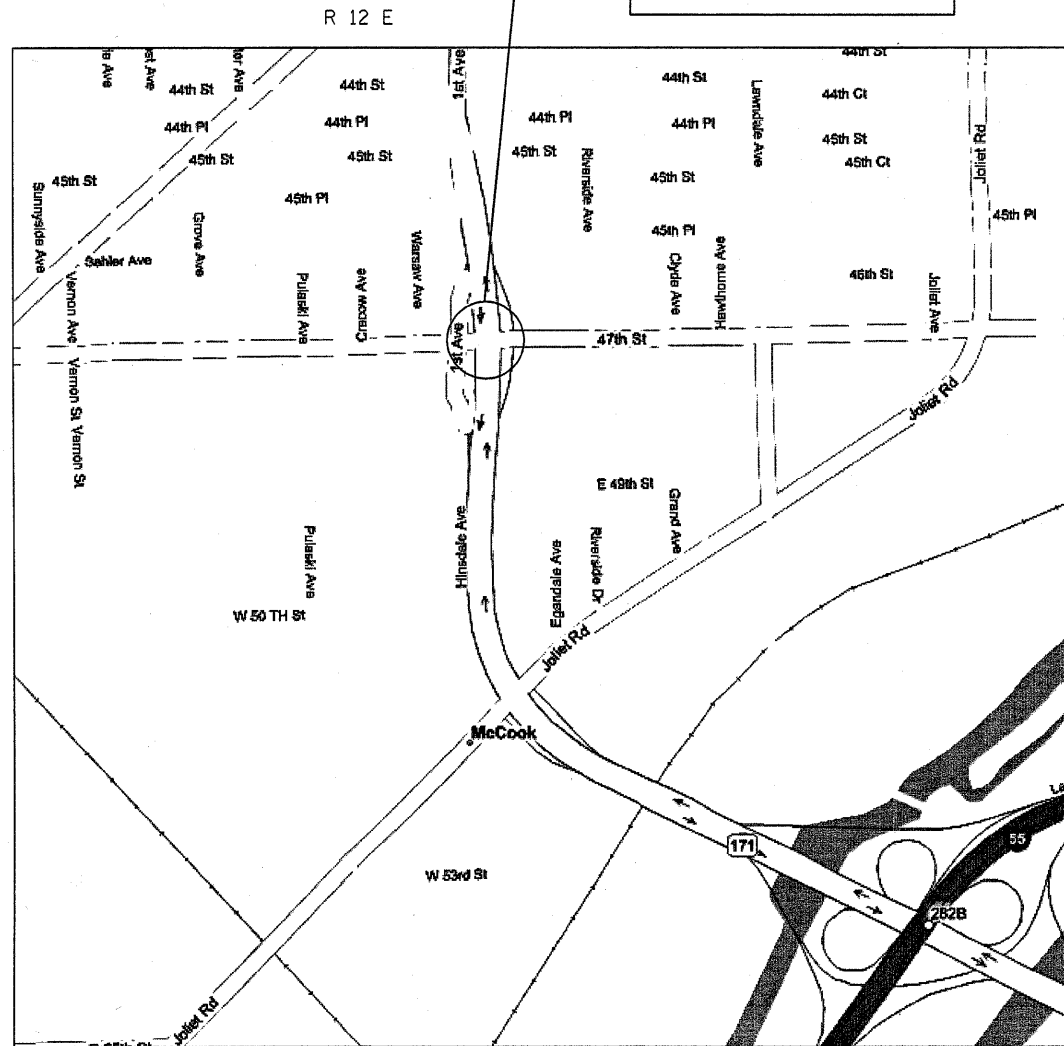
Diane O'Keefe  
DEPUTY DIRECTOR OF HIGHWAYS, REGION ENGINEER

February 1, 2008  
Eric E. Harms  
Interim ENGINEER OF DESIGN AND ENVIRONMENT

February 1, 2008  
Christine M. Reed  
DIRECTOR OF HIGHWAYS, CHIEF ENGINEER

PRINTED BY THE AUTHORITY  
OF THE STATE OF ILLINOIS

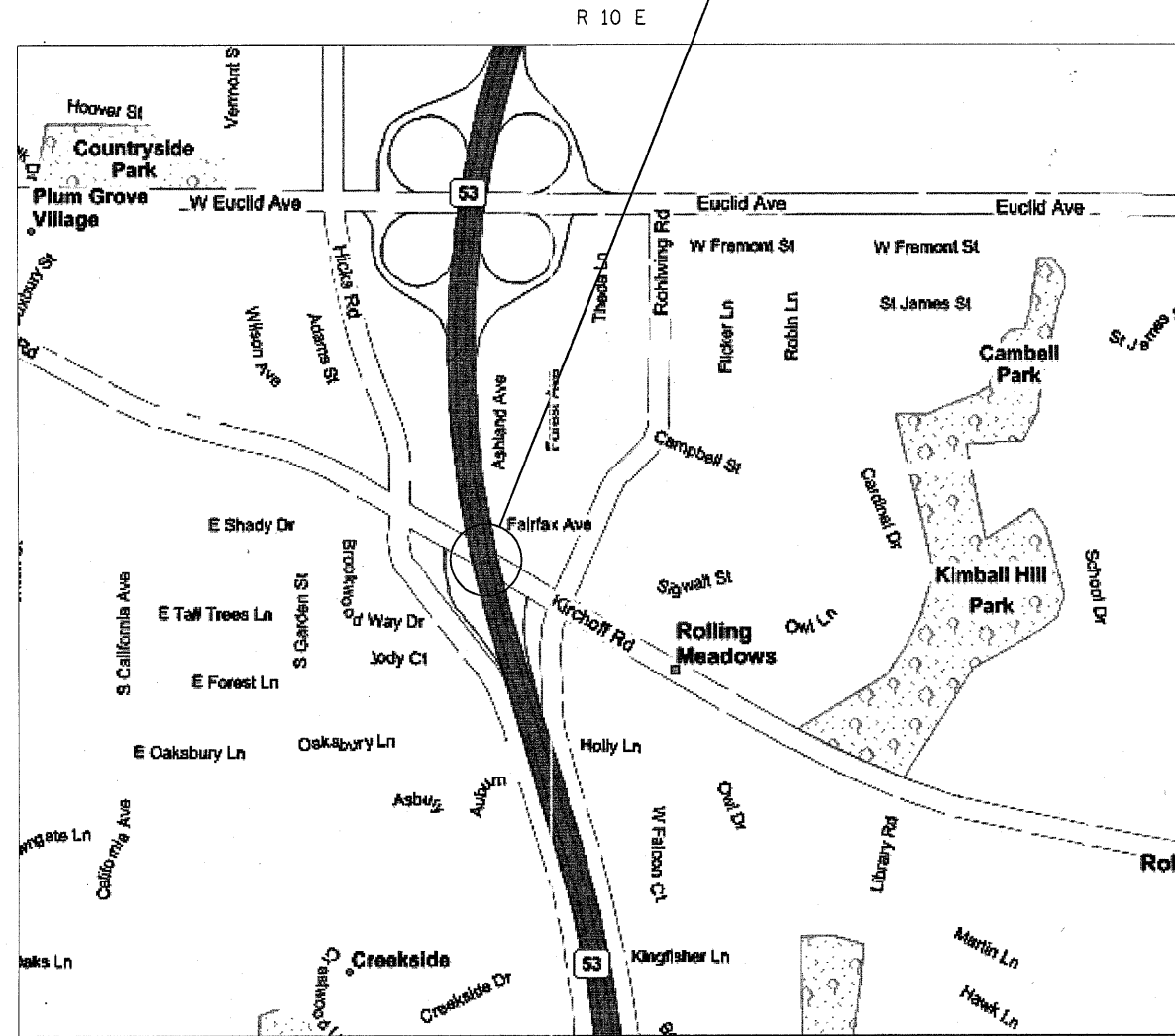
LOCATION 1: IL 171 (1st AVENUE)  
OVER 47TH STREET  
SN 016-1000 SB  
SN 016-1001 NB



LYONS TOWNSHIP  
VILLAGE OF MCCOOK, COOK COUNTY

(47th St.)  
TRAFFIC DATA:  
2006 ADT= 8900  
POSTED SPEED LIMIT: 35 MPH

LOCATION 2: IL 53  
OVER KIRCHOFF RD.  
SN 016-1121 SB  
SN 016-0376 NB



PALATINE TOWNSHIP  
VILLAGE OF ROLLING MEADOWS, COOK COUNTY

(KIRCHOFF RD.)  
TRAFFIC DATA:  
2006 ADT= 12,000  
POSTED SPEED LIMIT: 35 MPH

FILE NAME =  
c:\projects\1171\1171e47.dgn

USER NAME = mdyjo  
PLOT SCALE = 50.0000' / IN.  
PLOT DATE = 12/28/2007

DESIGNED -  
DRAWN -  
CHECKED -  
DATE -

REVISED -  
REVISED -  
REVISED -  
REVISED -

STATE OF ILLINOIS  
DEPARTMENT OF TRANSPORTATION

LOC 1 & LOC 2  
LOCATION MAPS

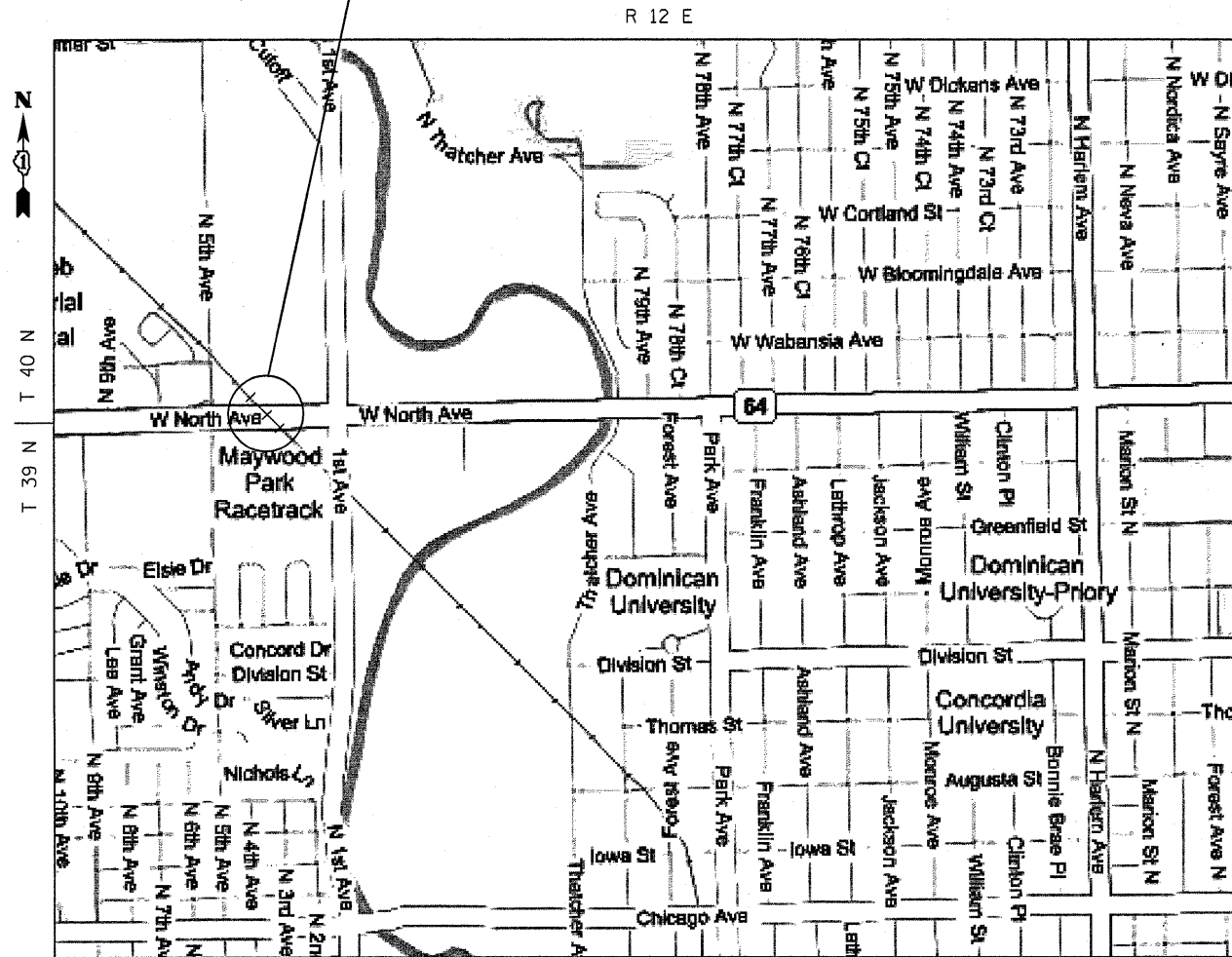
SCALE: SHEET NO. OF SHEETS STA. TO STA.

F.A. RTE.	SECTION	COUNTY	TOTAL SHEETS	SHEET NO.
VARIOUS	2007-0071	VARIOUS	25	2
CONTRACT NO. 60C36				
FED. ROAD DIST. NO. 1 ILLINOIS FED. AID PROJECT				

LOCATION 3: W.C. RR  
OVER IL 64 (NORTH AVE.)  
SN 016-0500 EAST BRIDGE  
SN 016-1126 WEST BRIDGE

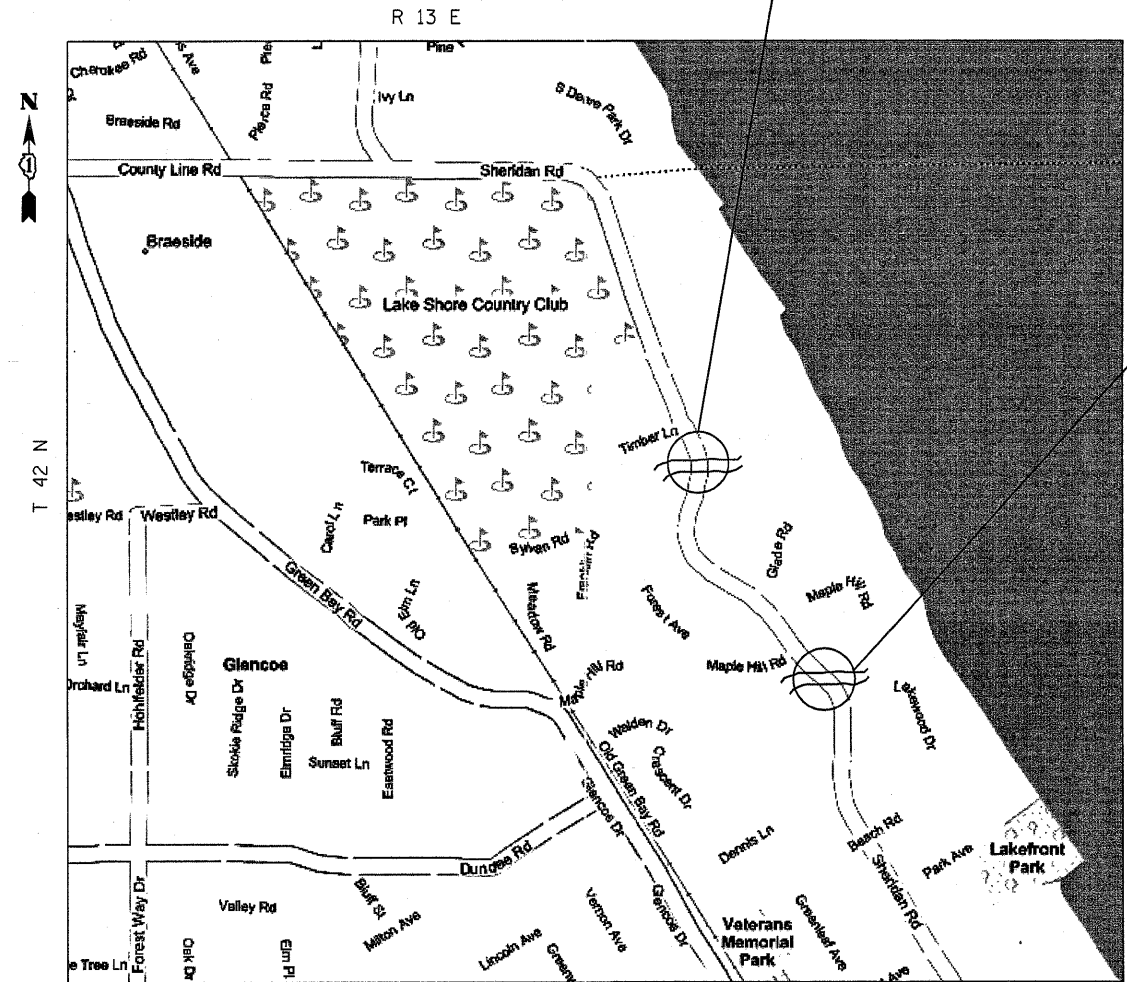
LOCATION 4: SHERIDAN RD  
OVER RAVINE No 1  
SN 016-0617

LOCATION 5: SHERIDAN RD  
OVER RAVINE No 2  
SN 016-0618



LEYDEN TOWNSHIP  
CITY OF MELROSE PARK, COOK COUNTY

(IL 64-NORTH AVE.)  
TRAFFIC DATA:  
2005 ADT= 19350  
POSTED SPEED LIMIT: 40 MPH



NEW TRIER TOWNSHIP  
VILLAGE OF GLENCOE, COOK COUNTY

(SHERIDAN RD.)  
TRAFFIC DATA:  
2005 ADT= 3500  
POSTED SPEED LIMIT: 30 MPH

FILE NAME =  
c:\proje\cts\dl20507\1171847.thdgn

USER NAME = midyja  
PLOT SCALE = 50.0000 "/ IN.  
PLOT DATE = 12/28/2007

DESIGNED -  
DRAWN -  
CHECKED -  
DATE -

REVISED -  
REVISED -  
REVISED -  
REVISED -

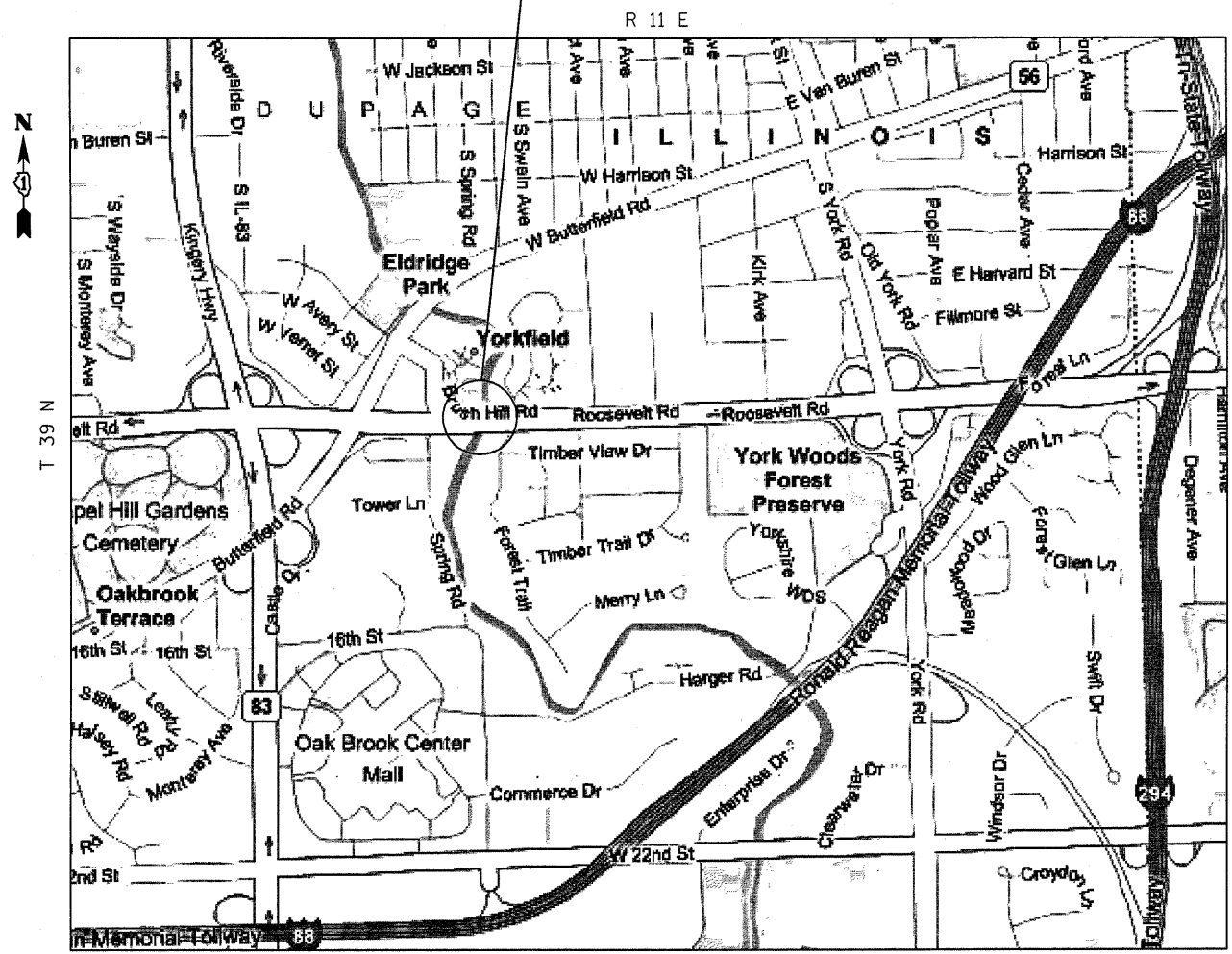
STATE OF ILLINOIS  
DEPARTMENT OF TRANSPORTATION

LOC 3, LOC 4 & LOC 5  
LOCATION MAPS

SCALE: SHEET NO. OF SHEETS STA. TO STA.

F.A. RTE.	SECTION	COUNTY	TOTAL SHEETS	SHEET NO.
VARIOUS	2007-0071	VARIOUS	25	3
CONTRACT NO. 60C36				
FED. ROAD DIST. NO. 1 ILLINOIS FED. AID PROJECT				

LOCATION 6: IL 38 (ROOSEVELT RD.)  
OVER SALT CREEK  
SN 022-0026



YORK TOWNSHIP  
CITY OF ELMHURST, DUPAGE COUNTY

(IL 38-ROOSEVELT RD.)  
TRAFFIC DATA:  
2005 ADT= 58000  
POSTED SPEED LIMIT: 55 MPH

FILE NAME = c:\projects\dl20507\1171847.thdgn	USER NAME = msdyje	DESIGNED -	REVISED -	<b>STATE OF ILLINOIS</b> <b>DEPARTMENT OF TRANSPORTATION</b>	<b>LOC 6</b> <b>LOCATION MAP</b>			F.A. RTE. =	SECTION	COUNTY	TOTAL SHEETS	SHEET NO.			
	PLOT SCALE = 50.0000' / IN.	DRAWN -	REVISED -		SCALE:	SHEET NO.	OF	SHEETS	STA.	TO STA.	VARIOUS	2007-0071	VARIOUS	25	4
	PLOT DATE = 12/28/2007	CHECKED -	REVISED -								CONTRACT NO. 60C36				
	DATE -	REVISED -								FED. ROAD DIST. NO. 1 ILLINOIS FED. AID PROJECT					

## INDEX OF SHEETS

1	TITLE SHEET
2-4	LOCATION MAPS
5	INDEX OF SHEETS, STATE STANDARDS & GENERAL NOTES
6	SUMMARY OF QUANTITIES
7-10	STRUCTURAL REPAIRS LOC 1 (SN 016-1000, -1001)
11-16	STRUCTURAL REPAIRS LOC 2 (SN 016-0376, -1121)
17-19	STRUCTURAL REPAIRS LOC 3 (SN 016-0500, -1126)
20-21	STRUCTURAL REPAIRS LOC 4 (SN 016-0617)
22	STRUCTURAL REPAIRS LOC 5 (SN 016-0618)
23-24	STRUCTURAL REPAIRS LOC 6 (SN 022-0026)
25	TRAFFIC CONTROL AND PROTECTION FOR SIDE ROADS, INTERSECTIONS AND DRIVEWAYS

## STATE STANDARDS

701006-02	OFF-ROAD OPERATIONS, 2L, 2W, MORE THAN 4.5M (15') AWAY
701301-02	LANE CLOSURE, 2L, 2W, SHORT TIME OPERATIONS
701501-04	URBAN LANE CLOSURE, 2L, 2W, UNDIVIDED
701601-05	URBAN LANE CLOSURE, MULTILANE, 1W OR 2W WITH NONTRAVERSABLE MEDIAN
701606-05	URBAN LANE CLOSURE, MULTILANE, 2W WITH MOUNTABLE MEDIAN
701801-03	LANE CLOSURE MULTILANE 1W OR 2W CROSSWALK OR SIDEWALK CLOSURE
701901	TRAFFIC CONTROL DEVICES

## GENERAL NOTES

BEFORE STARTING ANY EXCAVATION, THE CONTRACTOR SHALL CALL "J.U.L.I.E." (JOINT UTILITY LOCATION INFORMATION FOR EXCAVATION) AT (1-800)-892-0123 FOR FIELD LOCATIONS OF BURIED ELECTREIC, TELEPHONE AND GAS UTILITIES, (48 HOUR NOTIFICATION IS REQUIRED).

DO NOT SCALE PLANS FOR CONSTRUCTION DIMENSIONS

THE CONTRATOR SHALL CONTRACT THE DISTRICT ONE TRAFFIC CONTROL SUPERVISOR AT (847) 705-4470 A MINIMUM OF 72 HOURS IN ADVANCE OF BEGINNING WORKS.

THESE PLANS HAVE BEEN PREPARED FROM NOTES RECEIVE FROM BRIDGE INSPECTORS.

THE CONTRACTOR SHALL BE REQUIRED TO PROVIDE ACCESS TO ABUTTING PROPERTY AT ALL TIMES DURING THE CONSTRUCTION OF THIS PROJECT.

THE CONTRACTOR SHALL COORDINATE CONSTRUCTION ACTIVITIES WITH UTILITY COMPANIES.

THE CONTRACTOR WILL NOT BE ALLOWED TO SET UP A YARD OR FIELD OFFICE ON STATE PROPERTY WITHOUT WRITTEN PERMISSION FROM THE DEPARTMENT.

PLAN DIMENSIONS AND DETAILS RELATIVE TO EXISTING PLANS ARE SUBJECT TO ROUTINE VARIATIONS THE CONTRACTOR SHALL FIELD VERIFY EXISTING DIMENSIONS AND DETAILS AFFECTING NEW CONSTRUCTION AND MAKE NECESSARY APPROVED ADJUSTMENTS PRIOR TO CONSTRUCTION OR ORDERING OF MATEIRIALS. SUCH VARIATIONS SHALL NOT BE CAUSE FOR ADDITIONAL COMPENSATION FOR A CHANGE IN SCOPE OF THE WORK, HOWEVER, THE CONTRACTOR WILL BE PAID FOR THE QUANTITY ACTUALLY FURNISED BASED UPON THE UNIT PRICE BID FOR THE WORK.

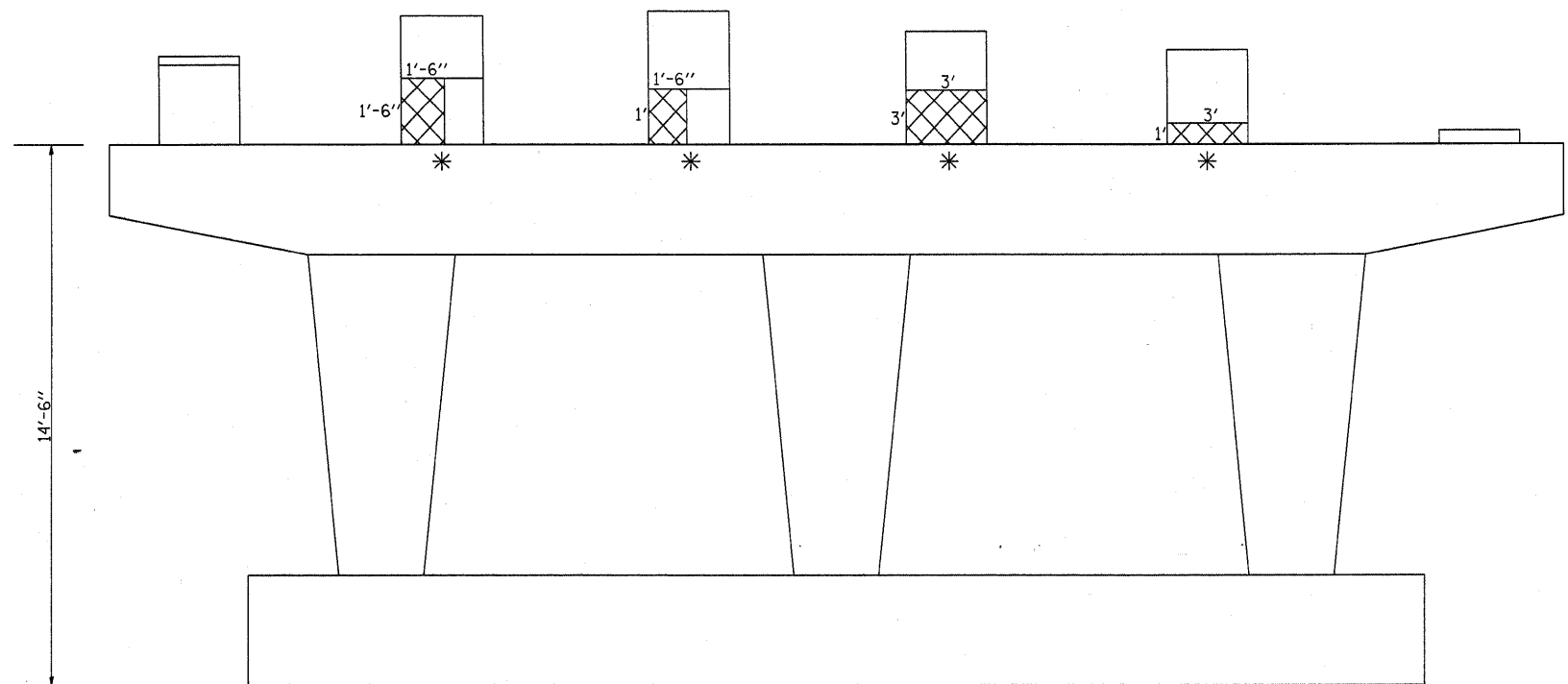
ALL STRUCTURAL STEEL SHALL CONFORM TO AASHTO CLASSIFICATION M-270 GR 36, UNLESS OTHERWISE NOTED.

REINFORCEMENT BARS SHALL CONFORM TO THE REQUIREMENTS OF ASTM A706 GR 60 (IL MODIFIED), SEE SPECIAL PROVISIONS.

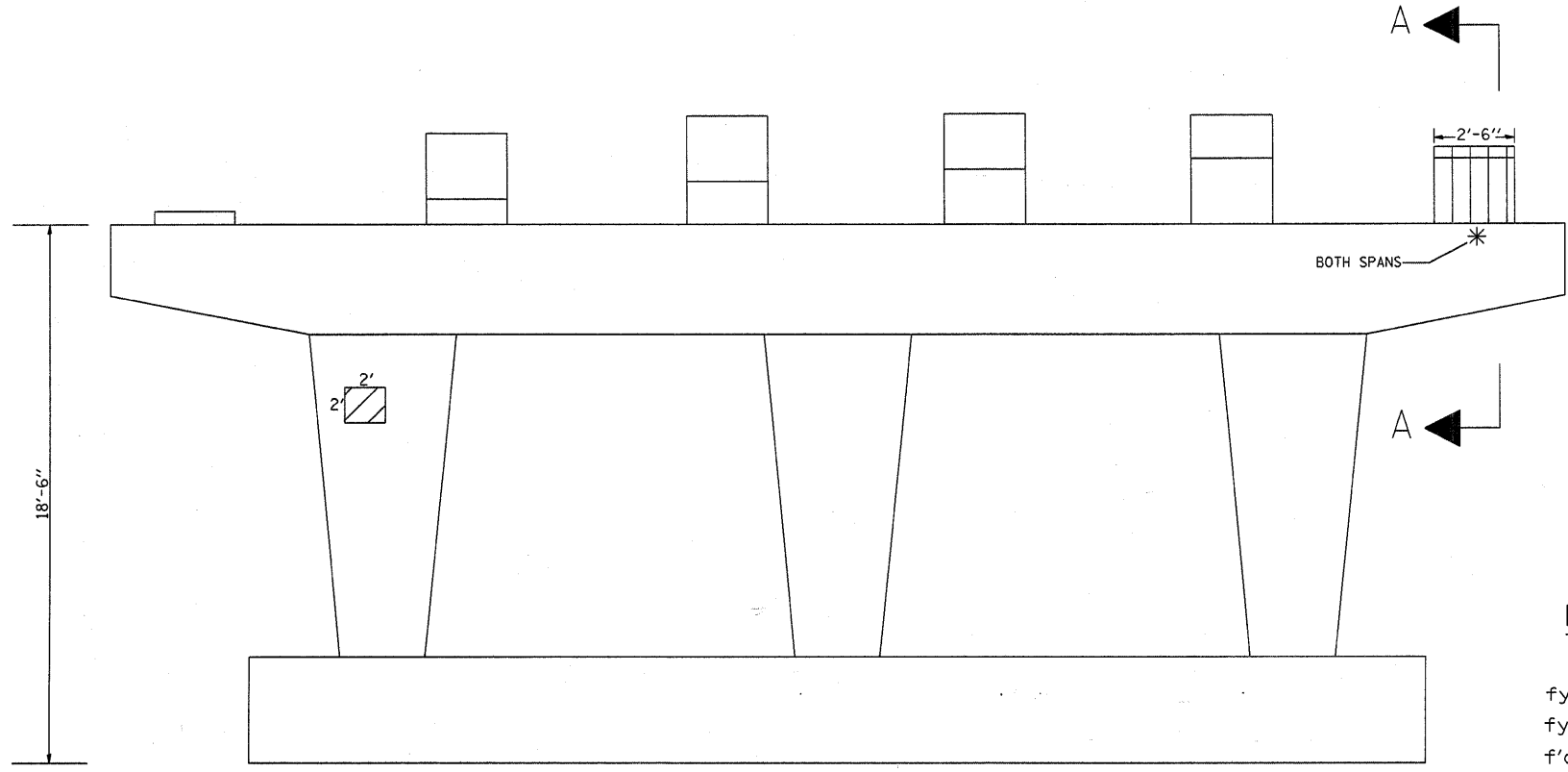
ALL STRUCTURAL STEEL SHALL BE PAINTED WITH THE INORGANIC ZINC RICH PRIMER PER AASHTO M300, TYPE 1, COST INCLUDED IN FURNISHING & ERECTING STRUCTURAL STEEL.

FILE NAME = c:\projects\dl20507\1171847\hdgn	USER NAME = mxdjjo	DESIGNED -	REVISED -	<b>STATE OF ILLINOIS DEPARTMENT OF TRANSPORTATION</b>	<b>INDEX OF SHEETS, STATE STANDARDS AND GENERAL NOTES</b>	F.A. RTE.	SECTION	COUNTY	TOTAL SHEETS	SHEET NO.
		DRAWN -	REVISED -			VARIOUS	2007-0071	VARIOUS	25	5
	PLOT SCALE = 50.0000 "/ IN.	CHECKED -	REVISED -							
	PLOT DATE = 12/27/2007	DATE -	REVISED -		SCALE:	SHEET NO.	OF	SHEETS	STA.	TO STA.
						CONTRACT NO. 60C36				
<small>FED. ROAD DIST. NO. 1 ILLINOIS FED. AID PROJECT</small>										





PIER 1 (NORTH FACE)  
(LOOKING SOUTH)



PIER 2 (SOUTH FACE)  
(LOOKING NORTH)

\* TEMPORARY SHORING AND CRIBBING

PIER 1 BILL OF MATERIAL	UNIT	QUANTITY
STRUCTURAL REPAIR OF CONCRETE > 5"	SQ FT	16
TEMPORARY SHORING AND CRIBBING	EA	4

BEAM REACTIONS TABLE

D.L.	62.6 K
L.L.	43.5 K
IMP.	9.7 K
TOTAL	115.8 K

PIER 1 & 2  
SPAN 2

BEAM REACTIONS TABLE

D.L.	22 K
L.L.	36.8 K
IMP.	11 K
TOTAL	69.8 K

PIER 1 & 2  
SPAN 1 & 3

PIER 2 BILL OF MATERIAL	UNIT	QUANTITY
STRUCTURAL REPAIR OF CONCRETE > 5"	SQ FT	15
STRUCTURAL REPAIR OF CONCRETE ≤ 5"	SQ FT	4
TEMPORARY SHORING AND CRIBBING	EA	2
CONCRETE REMOVAL	CU YD	.3
CONCRETE STRUCTURES	CU YD	.3
REINFORCEMENT BARS, EPOXY COATED	POUND	70
FURNISHING & ERECTING STRUCTURAL STEEL	POUND	200
ANCHOR BOLTS, 1"Ø	EACH	4

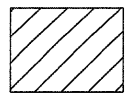
DESIGN STRESSES

FIELD UNITS  
 $f_y = 60,000^*$  (REINFORCEMENT)  
 $f_y = 36,000^*$  (AASHTO M-270 GR 36)  
 $f'_c = 3,500$  psi

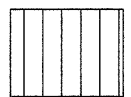
\* psi



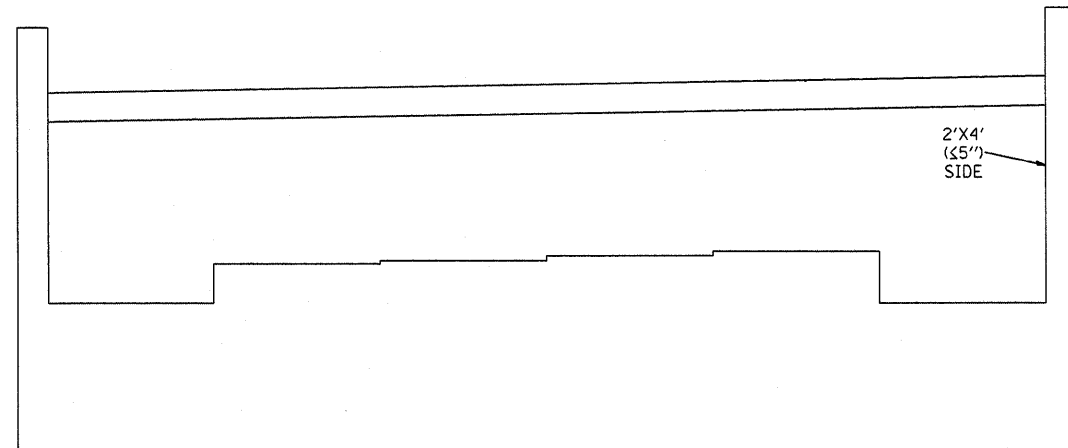
STRUCTURAL REPAIR OF CONCRETE > 5"



STRUCTURAL REPAIR OF CONCRETE ≤ 5"

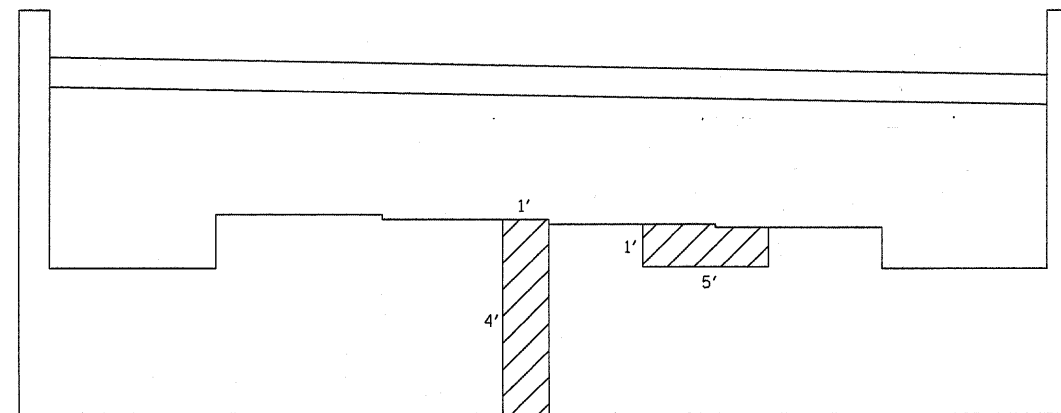


CONCRETE REMOVAL & CONCRETE STRUCTURES



NORTH ABUTMENT  
(LOOKING NORTH)

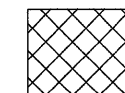
NORTH ABUTMENT BILL OF MATERIAL	UNIT	QUANTITY
STRUCTURAL REPAIR OF CONCRETE ≤ 5"	SQ FT	8



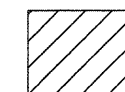
SOUTH ABUTMENT  
(LOOKING SOUTH)

SOUTH ABUTMENT BILL OF MATERIAL	UNIT	QUANTITY
STRUCTURAL REPAIR OF CONCRETE ≤ 5"	SQ FT	9

SN 016-1000 TOTAL BILL OF MATERIAL	UNIT	QUANTITY
STRUCTURAL REPAIR OF CONCRETE > 5"	SQ FT	31
STRUCTURAL REPAIR OF CONCRETE ≤ 5"	SQ FT	21
TEMPORARY SHORING AND CRIBBING	EA	6

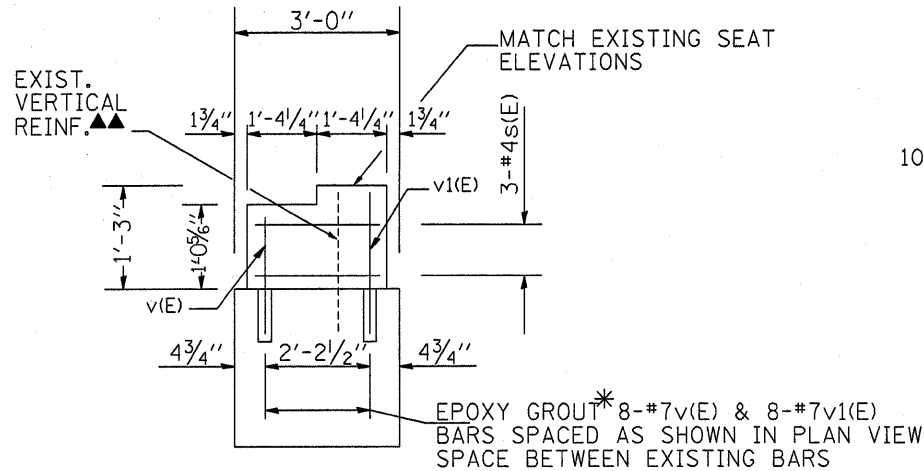


STRUCTURAL REPAIR OF CONCRETE > 5"

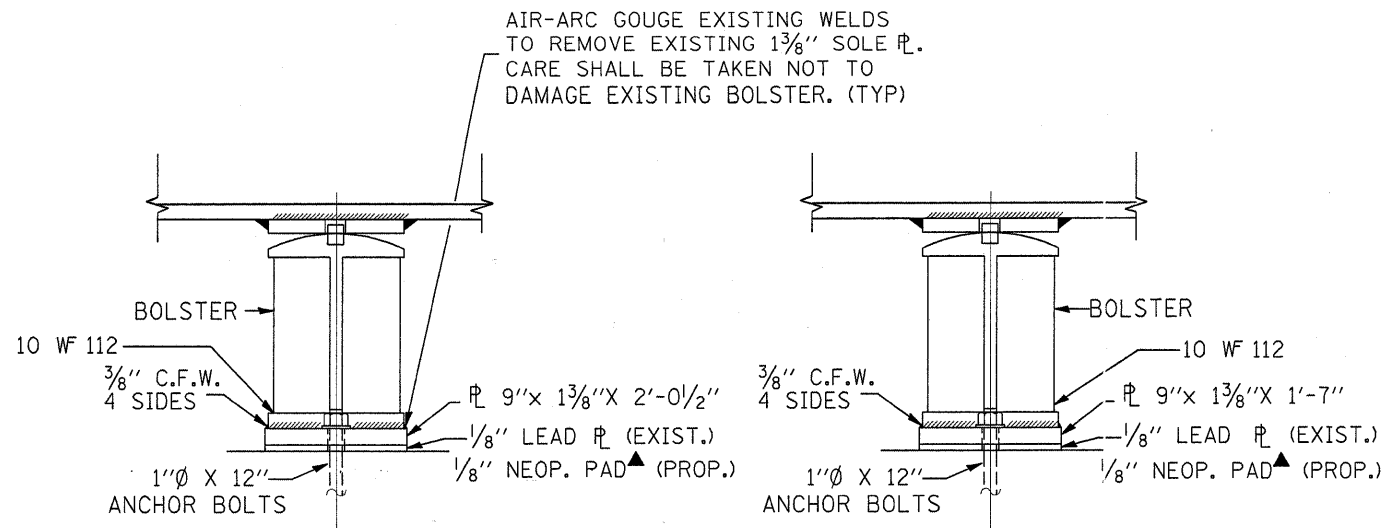


STRUCTURAL REPAIR OF CONCRETE ≤ 5"





SECTION A-A



ELEVATION  
AT PIER 2 SPAN 2

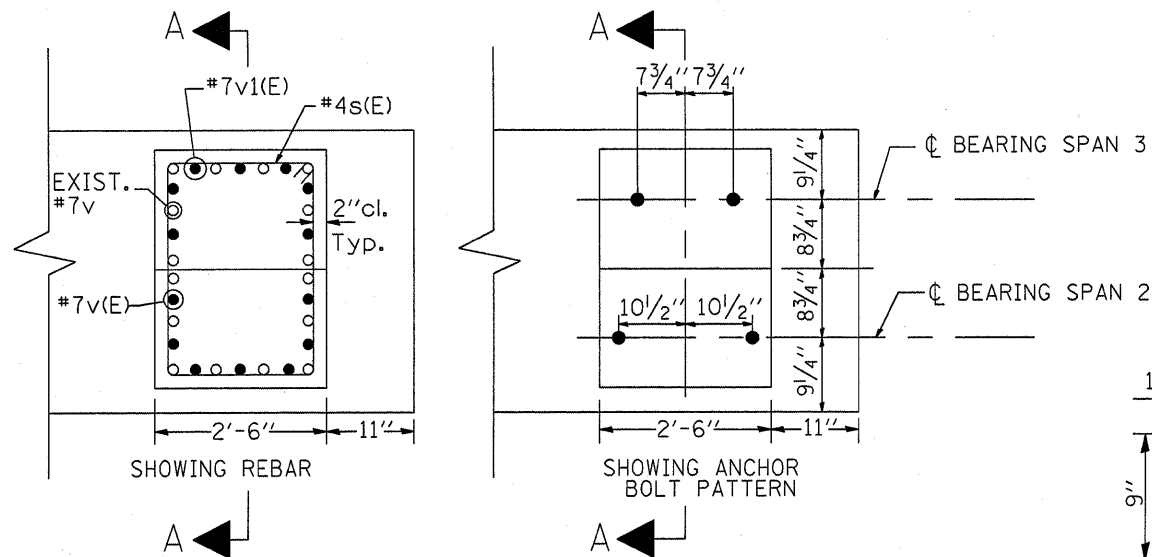
ELEVATION  
AT PIER 2 SPAN 3

▲ New 1/8" elastomeric neoprene leveling pad according to Article 1052.02 of the Standard Specifications. Cost included with Structural Steel.

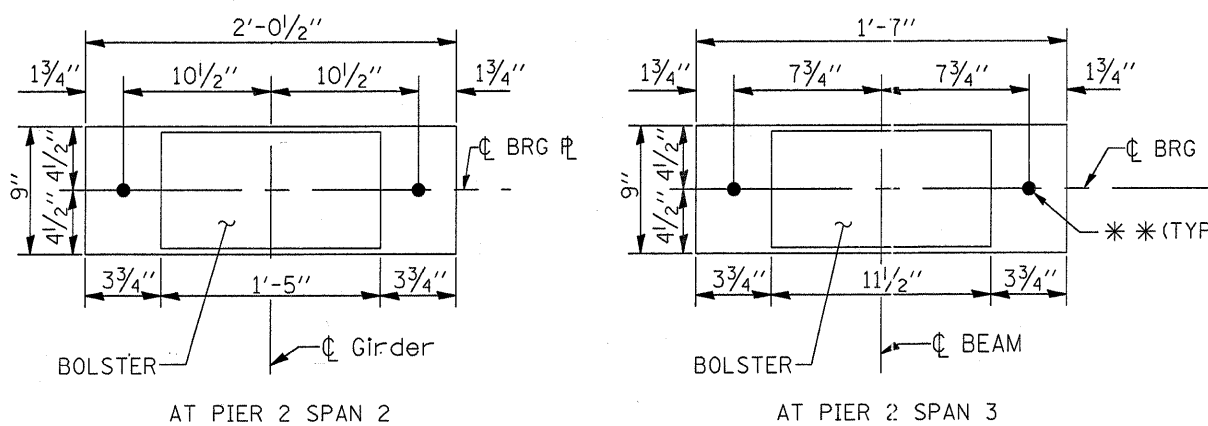
BAR LIST

BAR	NO	SIZE	LENGTH	SHAPE
s(E)	3	#4	9'-10"	
v(E)	7	#7	1'-7"	
v1(E)	7	#7	1'-10"	

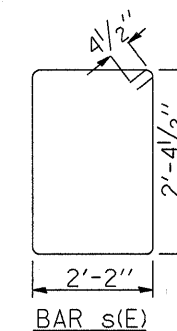
REINFORCEMENT BARS DESIGNATED (E) SHALL BE EPOXY COATED



DETAIL A  
PLAN VIEW



PLAN VIEW  
SHOWING SOLE PLATE



\* DRILL & EPOXY GROUT 9" MINIMUM INTO THE EXISTING CONCRETE ACCORDING TO ART. 584 OF THE STD. SPECS.

▲▲ CLEAN, STRAIGHTEN & INCORPORATE EXISTING VERTICAL REINFORCEMENT INTO NEW CONSTRUCTION.

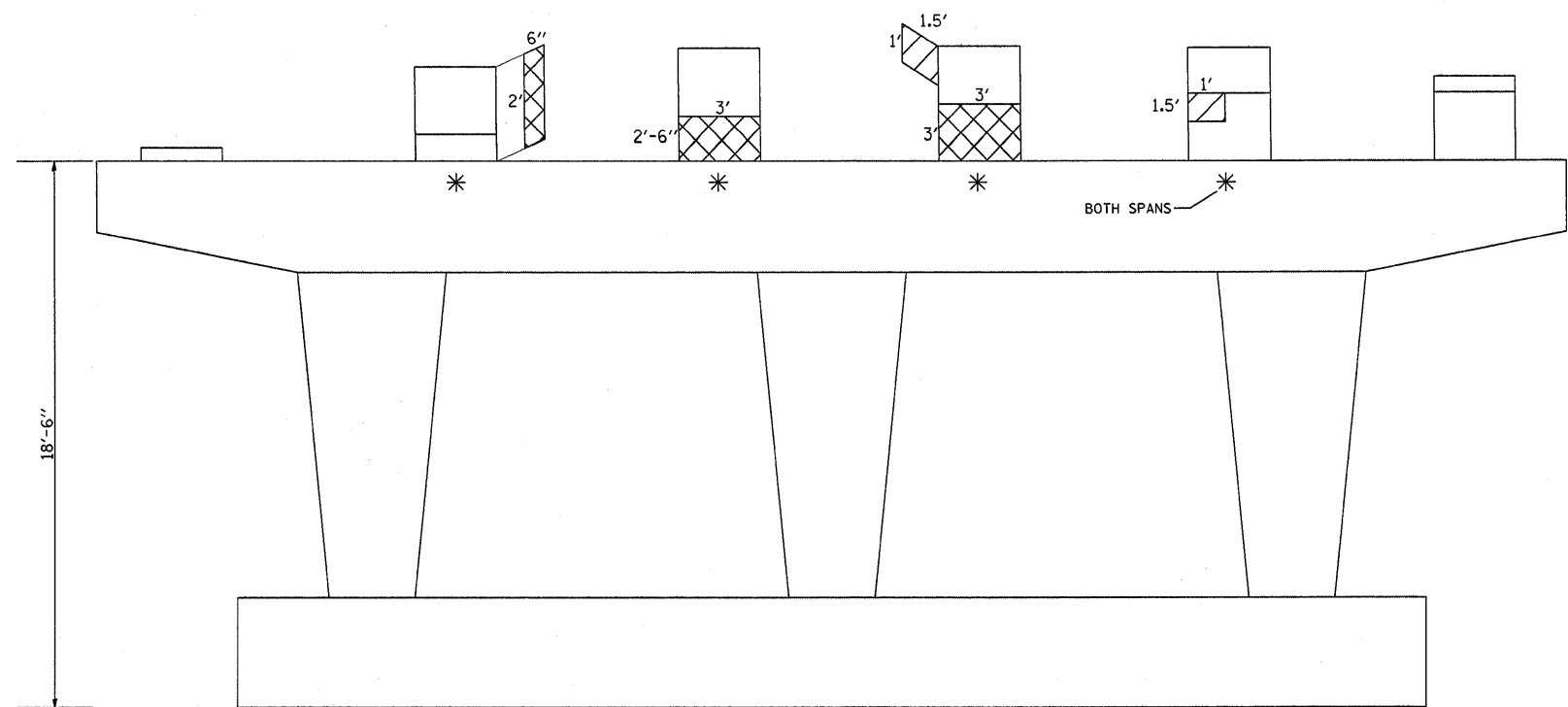
NOTE:

REMOVE EXIST. SOLE-PLS, LEAD PLS AND ANCHOR BOLTS. COST OF REMOVAL INCLUDED IN THE COST OF CONCRETE REMOVAL. INSTALL NEW SOLE PLS, 1/8" NEOP. PADS & ANCHOR BOLTS WITH PL WASHERS & NUTS.

PRIOR TO ORDER ANY MATERIAL, THE CONTRACTOR SHALL VERIFY IN THE FIELD ALL BEARING HEIGHT AND SHIM THICKNESS DIMENSIONS

\* 1 1/2 inch diameter HOLES FOR 1 inch ANCHOR BOLTS  
2 1/2 inch x 2 1/2 inch x 5/16 inch PL WASHERS UNDER NUT.

FILE NAME = c:\proje\jcts\d120507\11171047.thdgn	USER NAME = mdyja	DESIGNED -	REVISED -	<b>STATE OF ILLINOIS DEPARTMENT OF TRANSPORTATION</b>	<b>LOCATION 1: SN 016-1000 STRUCTURAL DETAILS</b>	F.A. RTE. -	SECTION	COUNTY	TOTAL SHEETS	SHEET NO.
PLOT SCALE = 5/8" = 1' / IN.	CHECKED -	REVISED -	VARIOUS			2007-007I	VARIOUS	25	9	
PLOT DATE = 12/20/2007	DATE -	REVISED -	SHEET 3 OF 4			CONTRACT NO. 60C36				
			SCALE: SHEET NO. OF SHEETS STA. TO STA.			FED. ROAD DIST. NO. 1 ILLINOIS FED. AID PROJECT				



PIER 2 (SOUTH FACE)  
(LOOKING NORTH)

BEAM REACTIONS TABLE

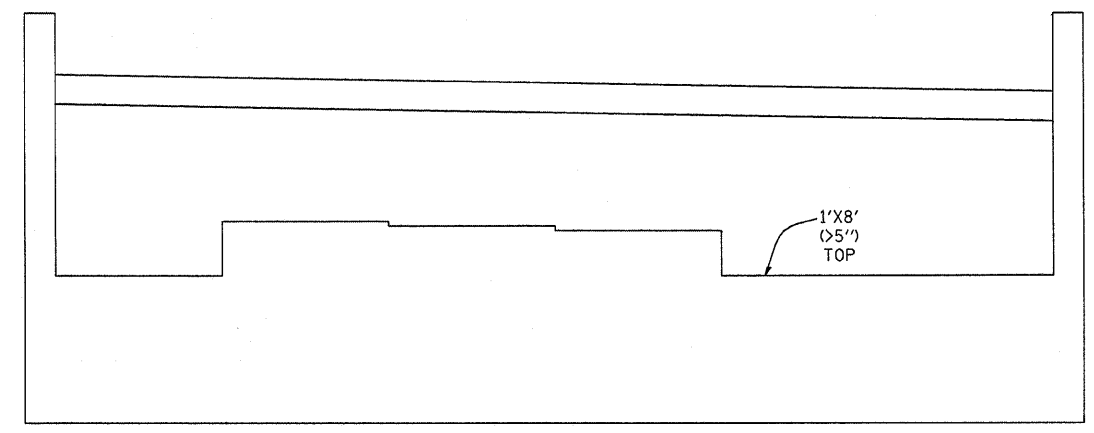
D.L.	62.6 K
L.L.	43.5 K
IMP.	9.7 K
TOTAL	115.8 K

PIER 2  
SPAN 2

BEAM REACTIONS TABLE

D.L.	22 K
L.L.	36.8 K
IMP.	11 K
TOTAL	69.8 K

PIER 2  
SPAN 3



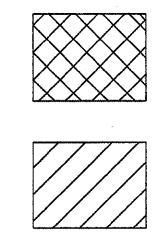
SOUTH ABUTMENT  
(LOOKING SOUTH)

PIER 2 BILL OF MATERIAL	UNIT	QUANTITY
STRUCTURAL REPAIR OF CONCRETE > 5"	SQ FT	19
STRUCTURAL REPAIR OF CONCRETE ≤ 5"	SQ FT	3
TEMPORARY SHORING AND CRIBBING	EA	5

SOUTH ABUTMENT BILL OF MATERIAL	UNIT	QUANTITY
STRUCTURAL REPAIR OF CONCRETE > 5"	SQ FT	8

SN 016-1001 TOTAL BILL OF MATERIAL	UNIT	QUANTITY
STRUCTURAL REPAIR OF CONCRETE > 5"	SQ FT	27
STRUCTURAL REPAIR OF CONCRETE ≤ 5"	SQ FT	3
TEMPORARY SHORING AND CRIBBING	EA	5

\* TEMPORARY SHORING AND CRIBBING



STRUCTURAL REPAIR OF CONCRETE > 5"  
STRUCTURAL REPAIR OF CONCRETE ≤ 5"

FILE NAME =  
e:\projects\dl20507\1171847.thdgn

USER NAME = miduja  
PLOT SCALE = 50.0000' / IN.  
PLOT DATE = 12/28/2007

DESIGNED -  
DRAWN -  
CHECKED -  
DATE -

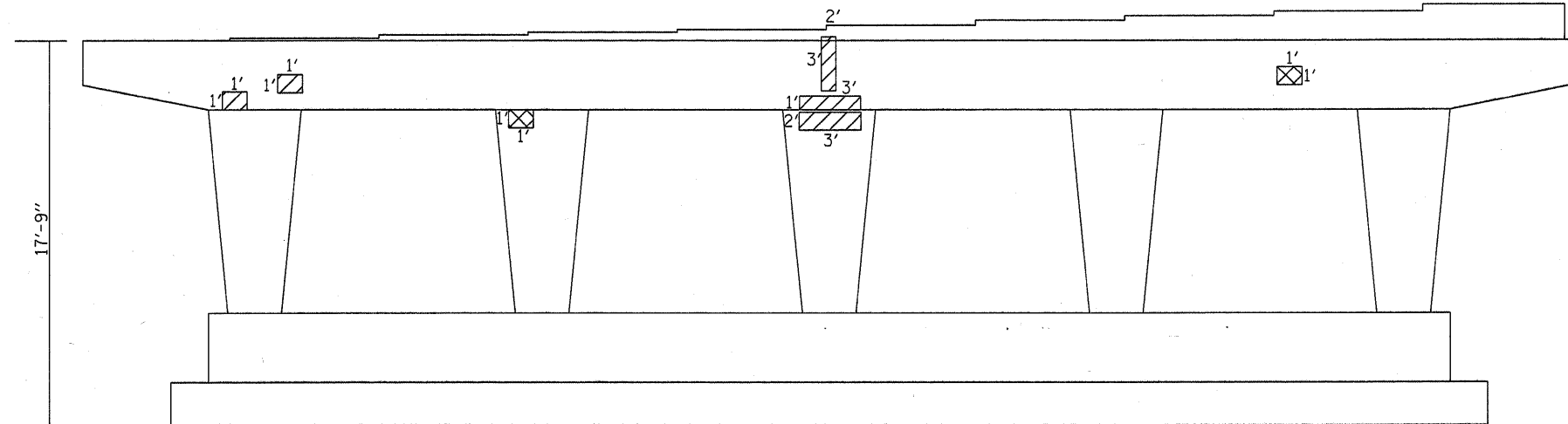
REVISED -  
REVISED -  
REVISED -  
REVISED -

STATE OF ILLINOIS  
DEPARTMENT OF TRANSPORTATION

LOCATION 1: SN 016-1001  
STRUCTURAL REPAIR SHEET 4 OF 4

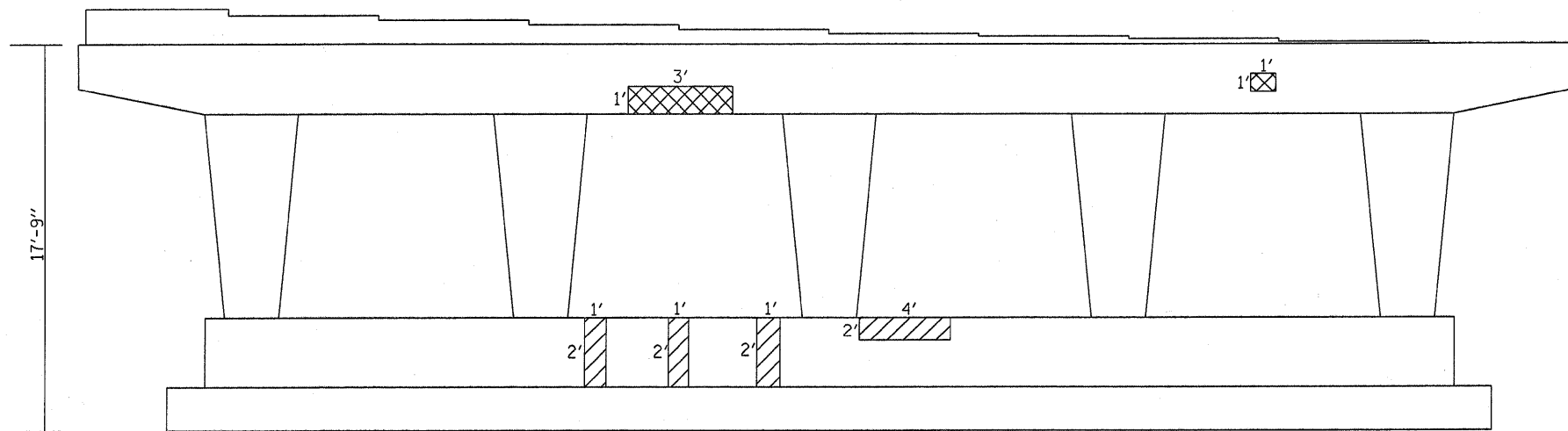
SCALE: SHEET NO. OF SHEETS STA. TO STA.

F.A. RTE.	SECTION	COUNTY	TOTAL SHEETS	SHEET NO.
VARIOUS	2007-007I	VARIOUS	25	10
CONTRACT NO. 60C36				
FED. ROAD DIST. NO. 1 ILLINOIS FED. AID PROJECT				



PIER 2  
NORTH FACE  
(LOOKING SOUTH)

PIER 2 BILL OF MATERIAL	UNIT	QUANTITY
STRUCTURAL REPAIR OF CONCRETE > 5"	SQ FT	6
STRUCTURAL REPAIR OF CONCRETE ≤ 5"	SQ FT	31



PIER 2  
SOUTH FACE  
(LOOKING NORTH)

LEGEND

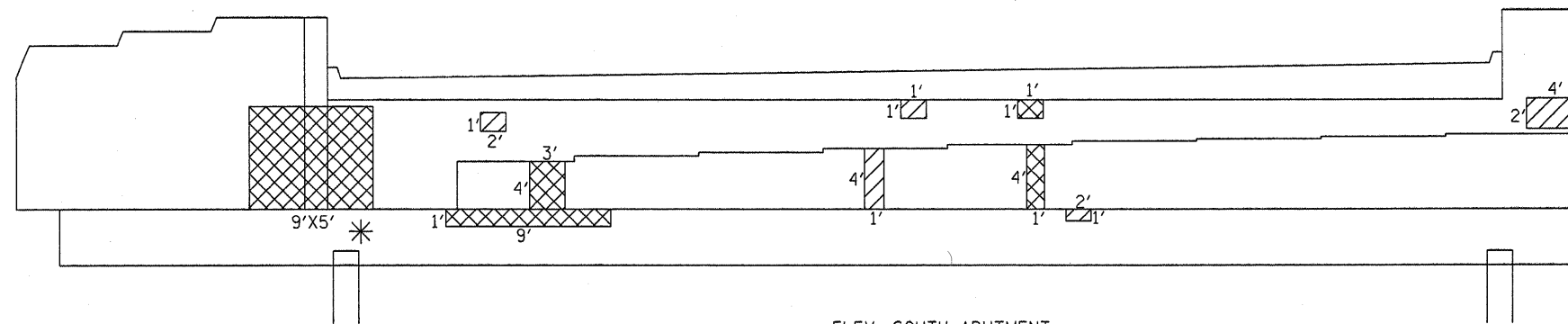


STRUCTURAL REPAIR OF CONCRETE > 5"

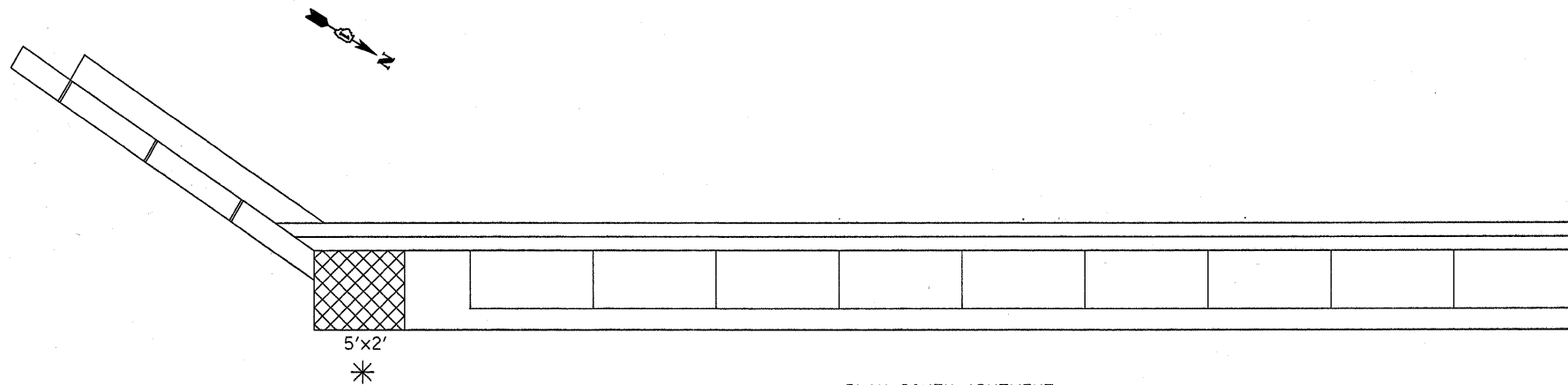


STRUCTURAL REPAIR OF CONCRETE ≤ 5"

FILE NAME = c:\projects\dl20507\1153\krohoff.dgn	USER NAME = mcdjja	DESIGNED -	REVISED -	<b>STATE OF ILLINOIS DEPARTMENT OF TRANSPORTATION</b>	<b>LOCATION 2: SN 016-0376 PIER STRUCTURAL REPAIR</b>	F.A. RTE.	SECTION	COUNTY	TOTAL SHEETS	SHEET NO.	
		DRAWN -	REVISED -			VARIOUS	2007-0071	VARIOUS	25	11	
		PLOT SCALE = 72.0000' / IN.	CHECKED -			REVISED -	<b>SHEET 1 OF 6</b>		CONTRACT NO. 60C36		
		PLOT DATE = 12/28/2007	DATE -			REVISED -	SCALE:	SHEET NO.	OF	SHEETS	STA.
						FED. ROAD DIST. NO. 1 ILLINOIS FED. AID PROJECT					



ELEV. SOUTH ABUTMENT  
(LOOKING SOUTH)



PLAN SOUTH ABUTMENT

BEAM  
REACTIONS  
TABLE

D.L.	15.8 K
L.L.	30.6 K
IMP.	9.2 K
TOTAL	55.6 K

SOUTH ABUT.  
SPAN 1

S. ABUT. BILL OF MATERIAL	UNIT	QUANTITY
STRUCTURAL REPAIR OF CONCRETE > 5"	SQ FT	81
STRUCTURAL REPAIR OF CONCRETE ≤ 5"	SQ FT	17
TEMPORARY SHORING AND CRIBBING	EA	1

LEGEND



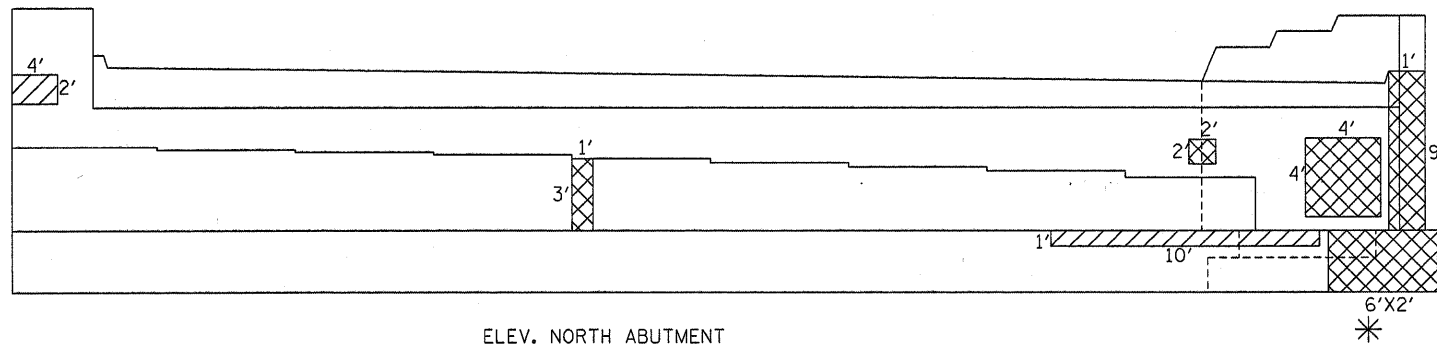
STRUCTURAL REPAIR OF CONCRETE > 5"



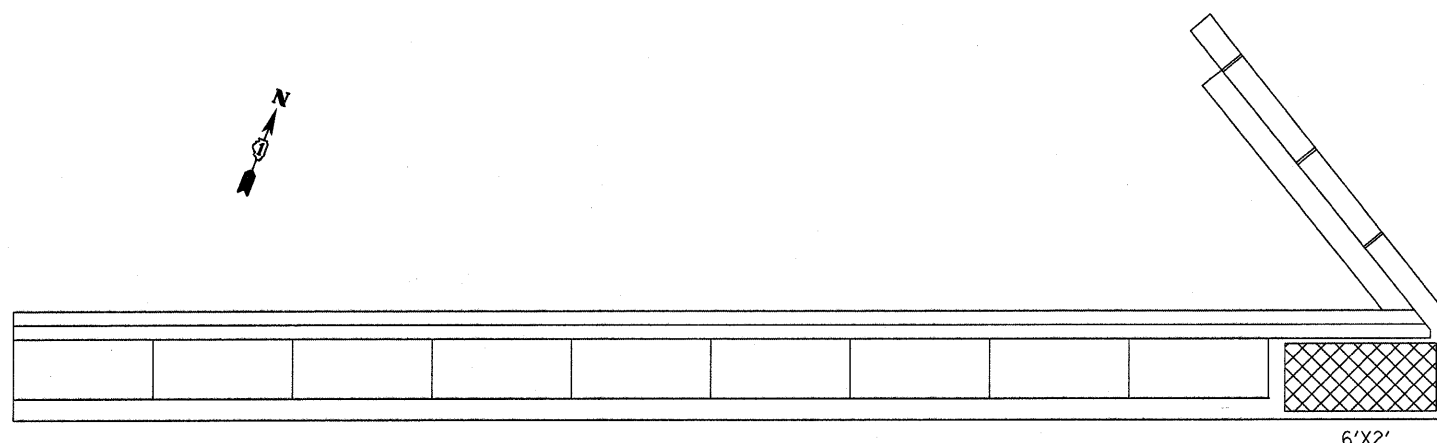
STRUCTURAL REPAIR OF CONCRETE ≤ 5"

\* LOCATION FOR TEMPORARY SHORING AND CRIBBNG

SHEET 2 OF 3



ELEV. NORTH ABUTMENT  
(LOOKING NORTH)



PLAN NORTH ABUTMENT

N. ABUT. BILL OF MATERIAL	UNIT	QUANTITY
STRUCTURAL REPAIR OF CONCRETE > 5"	SQ FT	56
STRUCTURAL REPAIR OF CONCRETE ≤ 5"	SQ FT	18
TEMPORARY SHORING AND CRIBBING	EA	1

SN 016-0376 TOTAL BILL OF MATERIAL	UNIT	QUANTITY
STRUCTURAL REPAIR OF CONCRETE > 5"	SQ FT	143
STRUCTURAL REPAIR OF CONCRETE ≤ 5"	SQ FT	66
TEMPORARY SHORING AND CRIBBING	EA	2

BEAM REACTIONS TABLE

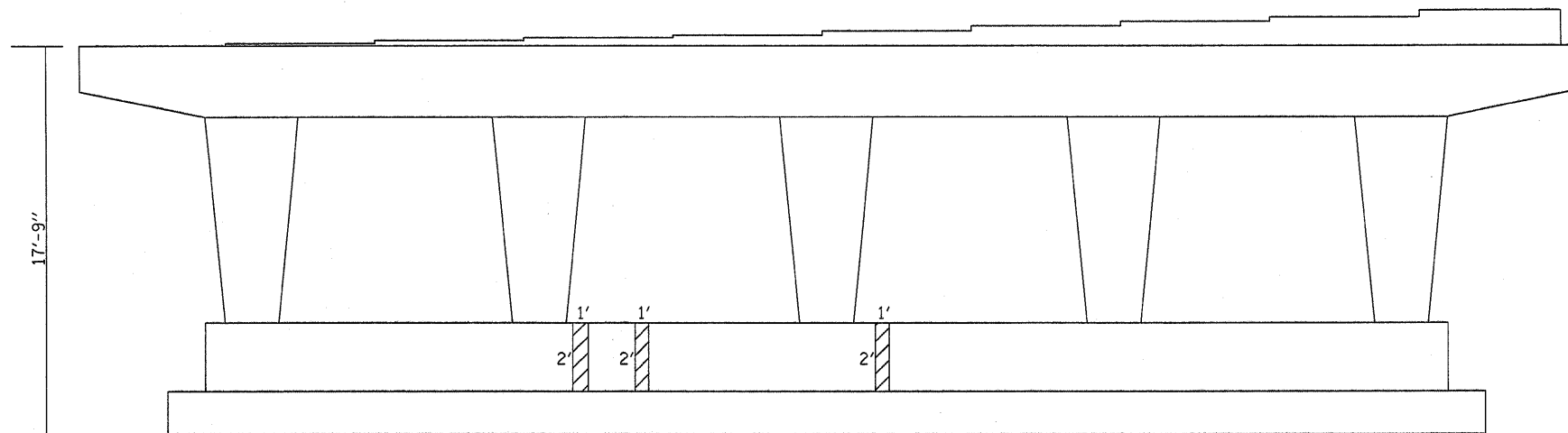
D.L.	15.8 K
L.L.	30.6 K
IMP.	9.2 K
TOTAL	55.6 K

NORTH ABUT.  
SPAN 3

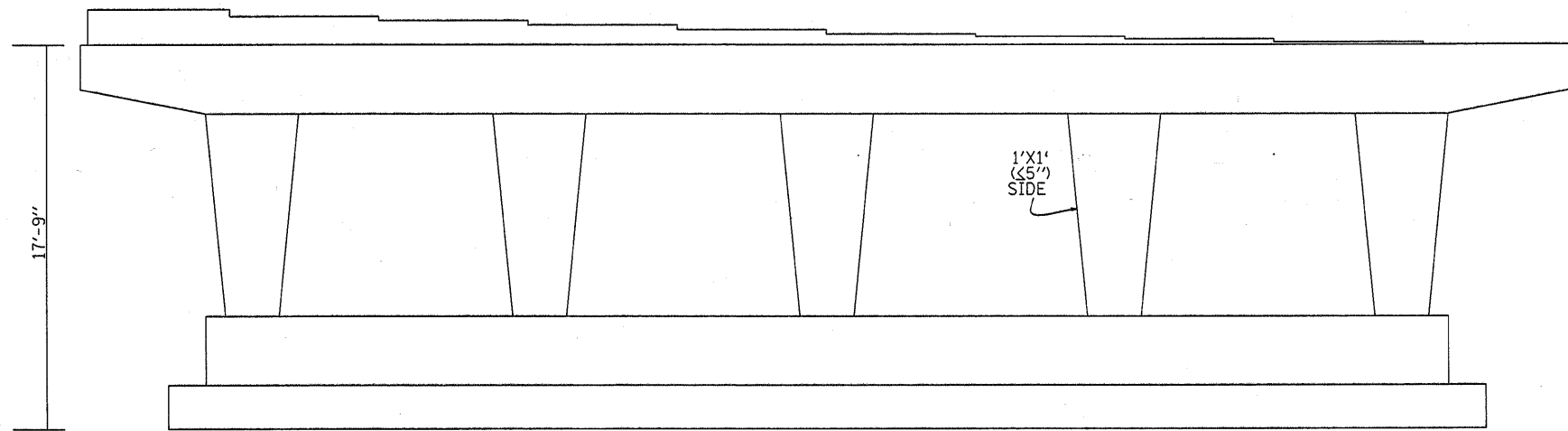
LEGEND

	STRUCTURAL REPAIR OF CONCRETE > 5"
	STRUCTURAL REPAIR OF CONCRETE ≤ 5"

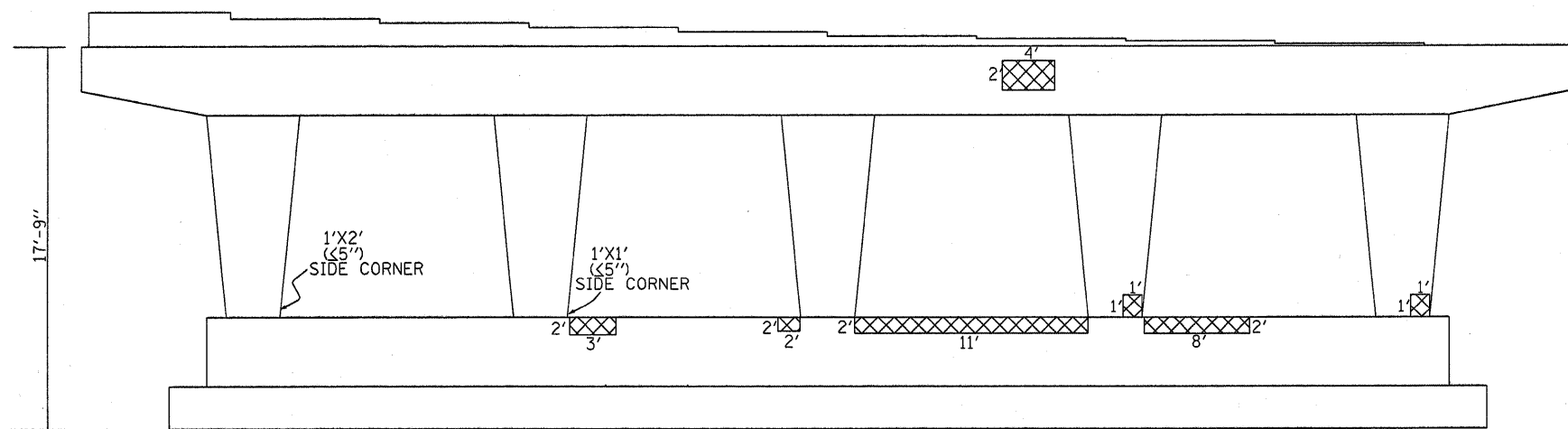
\* LOCATION FOR TEMPORARY SHORING AND CRIBBNG



PIER 1  
NORTH FACE  
(LOOKING SOUTH)



PIER 1  
SOUTH FACE  
(LOOKING NORTH)



PIER 2  
SOUTH FACE  
(LOOKING NORTH)

PIER 1 & 2 BILL OF MATERIAL	UNIT	QUANTITY
STRUCTURAL REPAIR OF CONCRETE > 5"	SQ FT	58
STRUCTURAL REPAIR OF CONCRETE ≤ 5"	SQ FT	10

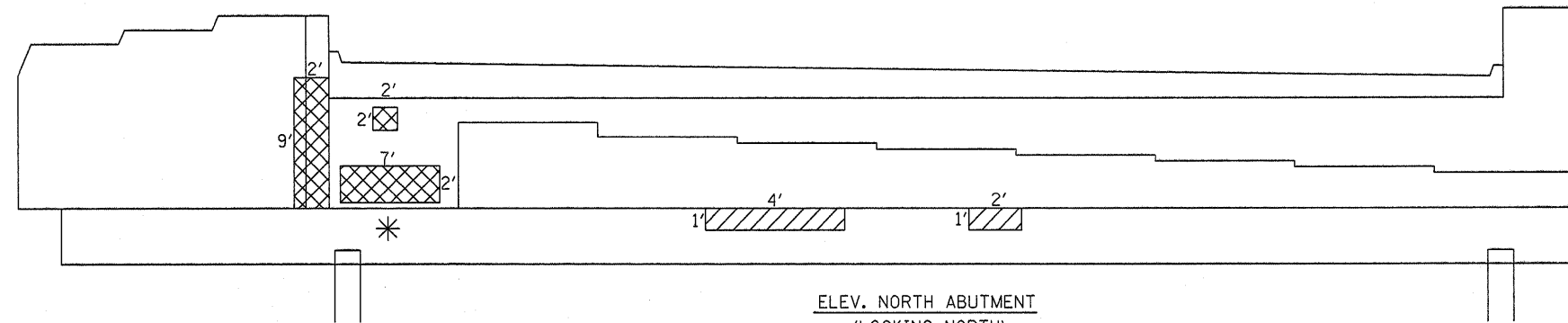
LEGEND



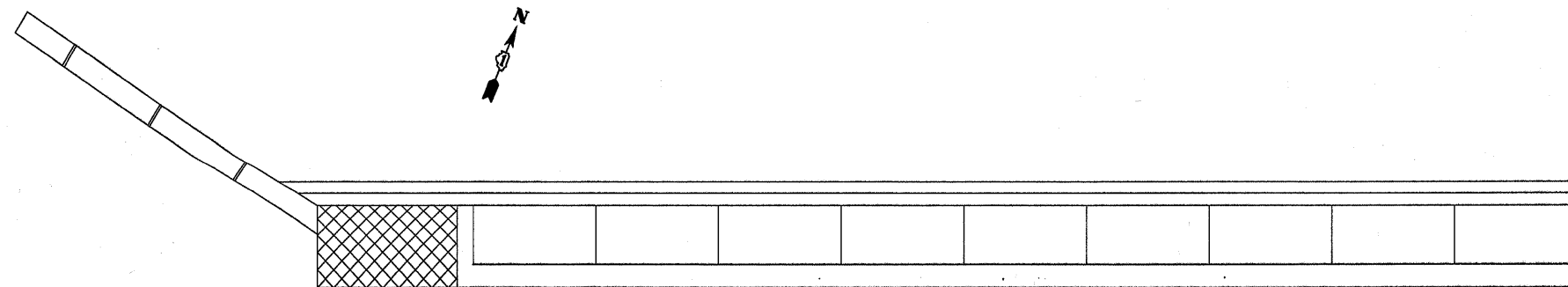
STRUCTURAL REPAIR OF CONCRETE > 5"



STRUCTURAL REPAIR OF CONCRETE ≤ 5"



ELEV. NORTH ABUTMENT  
(LOOKING NORTH)



PLAN NORTH ABUTMENT

N. ABUT. BILL OF MATERIAL	UNIT	QUANTITY
STRUCTURAL REPAIR OF CONCRETE > 5"	SQ FT	50
STRUCTURAL REPAIR OF CONCRETE ≤ 5"	SQ FT	6
TEMPORARY SHORING AND CRIBBING	EA	1

BEAM  
REACTIONS  
TABLE

D.L.	15.8 K
L.L.	30.6 K
IMP.	9.2 K
TOTAL	55.6 K

NORTH ABUT.  
SPAN 3

LEGEND



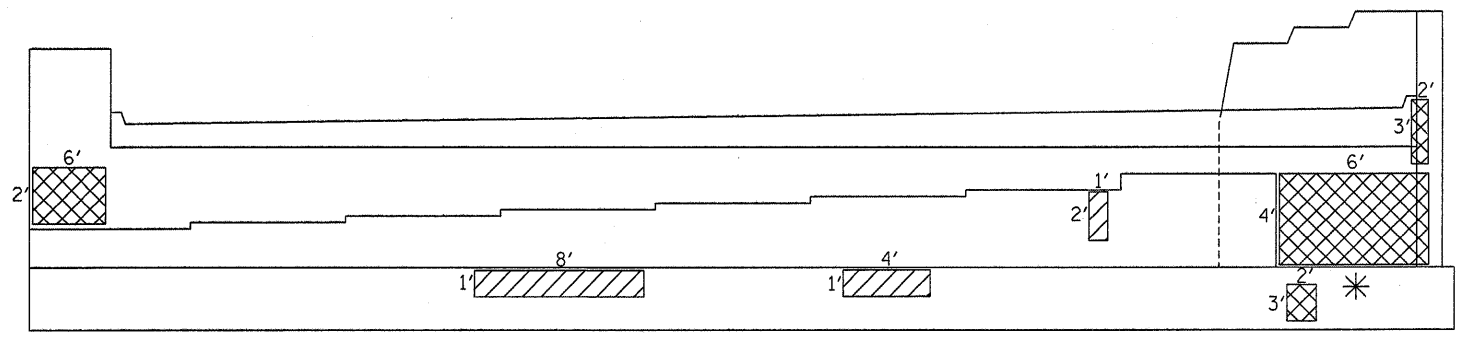
STRUCTURAL REPAIR OF CONCRETE > 5"



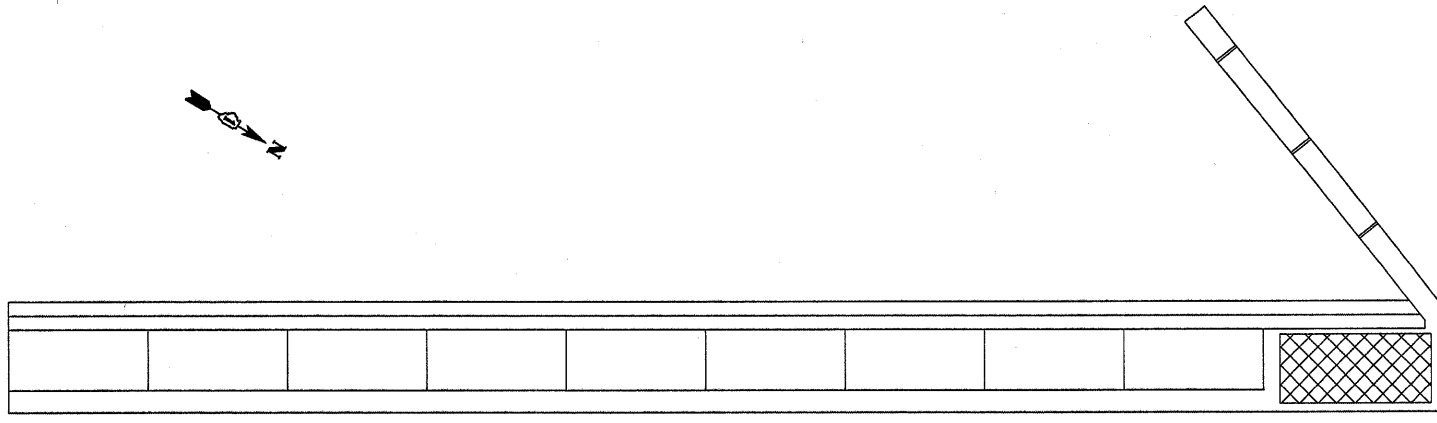
STRUCTURAL REPAIR OF CONCRETE ≤ 5"

\* LOCATION FOR TEMPORARY SHORING AND CRIBBNG

SHEET 2 OF 3



ELEV. SOUTH ABUTMENT  
(LOOKING SOUTH)



PLAN SOUTH ABUTMENT

S. ABUT. BILL OF MATERIAL	UNIT	QUANTITY
STRUCTURAL REPAIR OF CONCRETE > 5"	SQ FT	66
STRUCTURAL REPAIR OF CONCRETE ≤ 5"	SQ FT	14
TEMPORARY SHORING AND CRIBBING	EA	1

SN 016-1121 TOTAL BILL OF MATERIAL	UNIT	QUANTITY
STRUCTURAL REPAIR OF CONCRETE > 5"	SQ FT	174
STRUCTURAL REPAIR OF CONCRETE ≤ 5"	SQ FT	30
TEMPORARY SHORING AND CRIBBING	EA	2

BEAM REACTIONS TABLE

D.L.	15.8 K
L.L.	30.6 K
IMP.	9.2 K
TOTAL	55.6 K

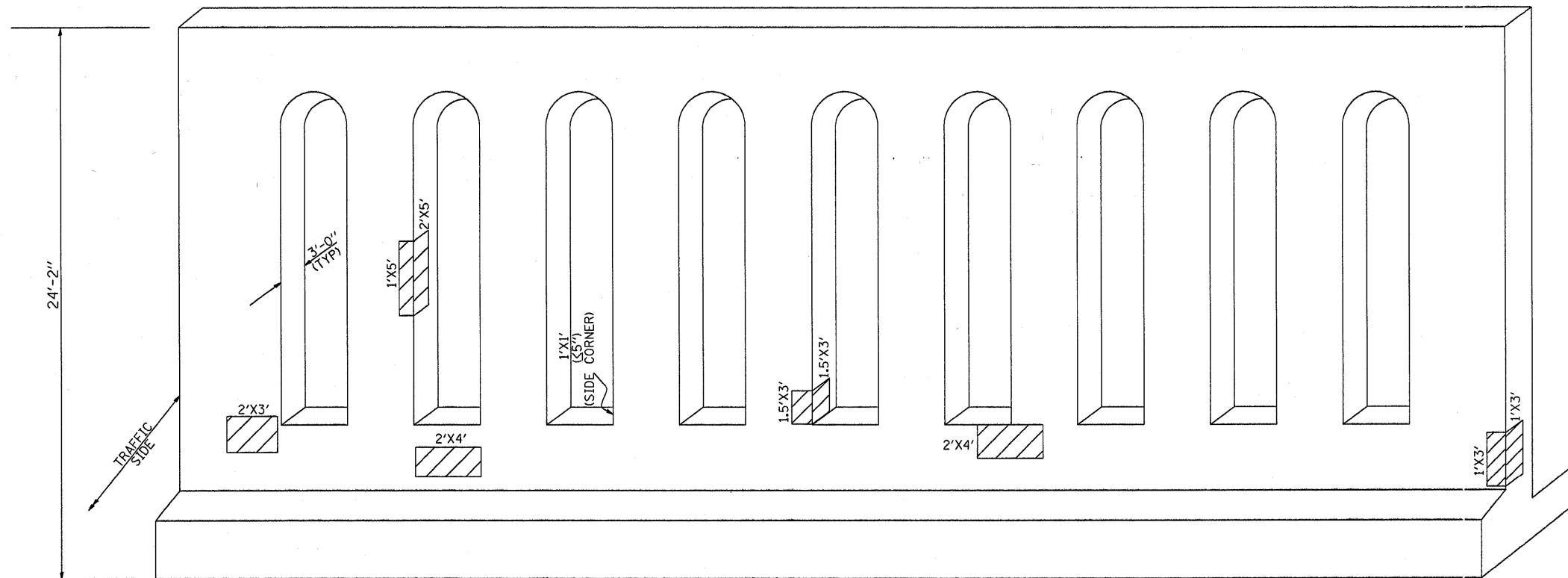
SOUTH ABUT. SPAN 1

LEGEND

- STRUCTURAL REPAIR OF CONCRETE > 5"
- STRUCTURAL REPAIR OF CONCRETE ≤ 5"

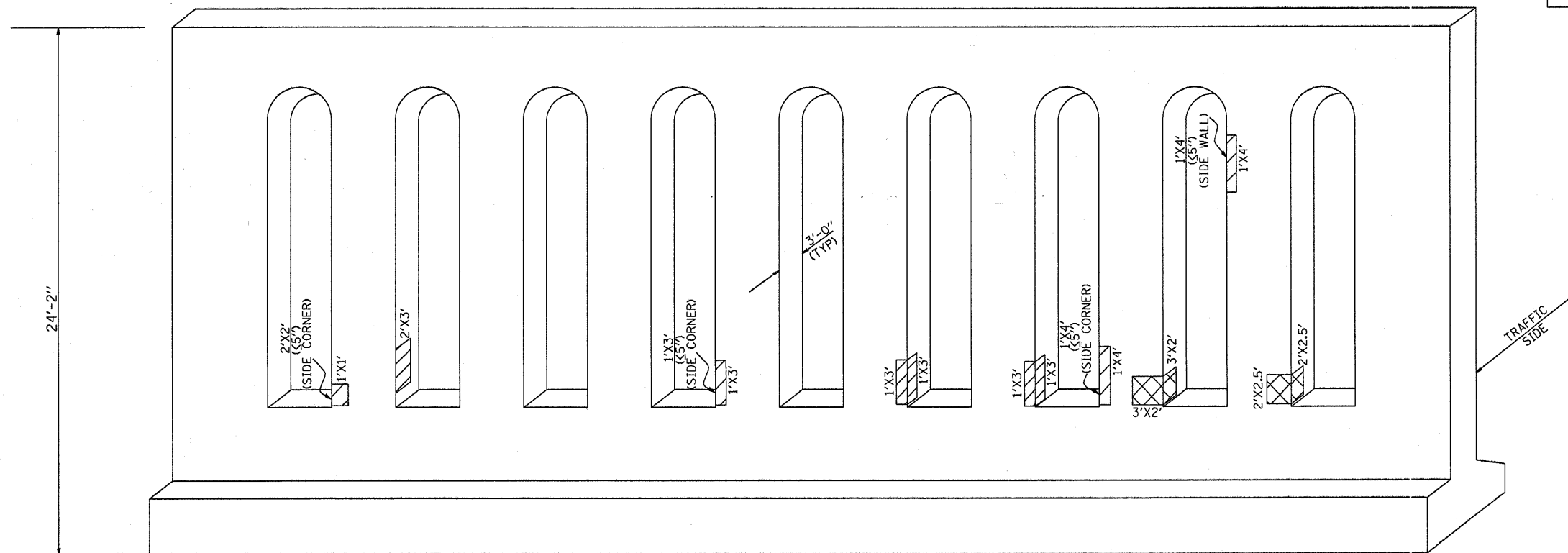
\* LOCATION FOR TEMPORARY SHORING AND CRIBBING



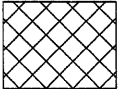



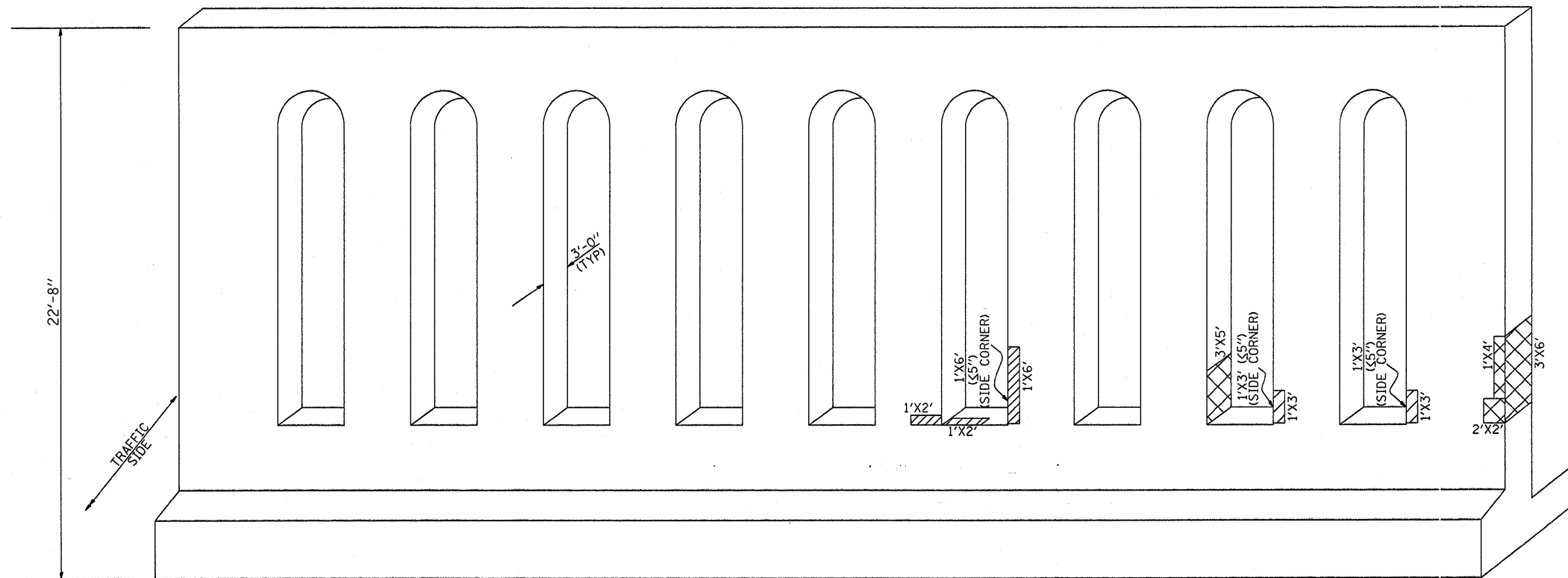
SOUTH ABUTMENT FRONT WALL (NORTH FACE)  
(LOOKING SOUTH)

SOUTH ABUT. FRONT WALL BILL OF MATERIAL	UNIT	QUANTITY
STRUCTURAL REPAIR OF CONCRETE > 5"	SQ FT	22
STRUCTURAL REPAIR OF CONCRETE ≤ 5"	SQ FT	99



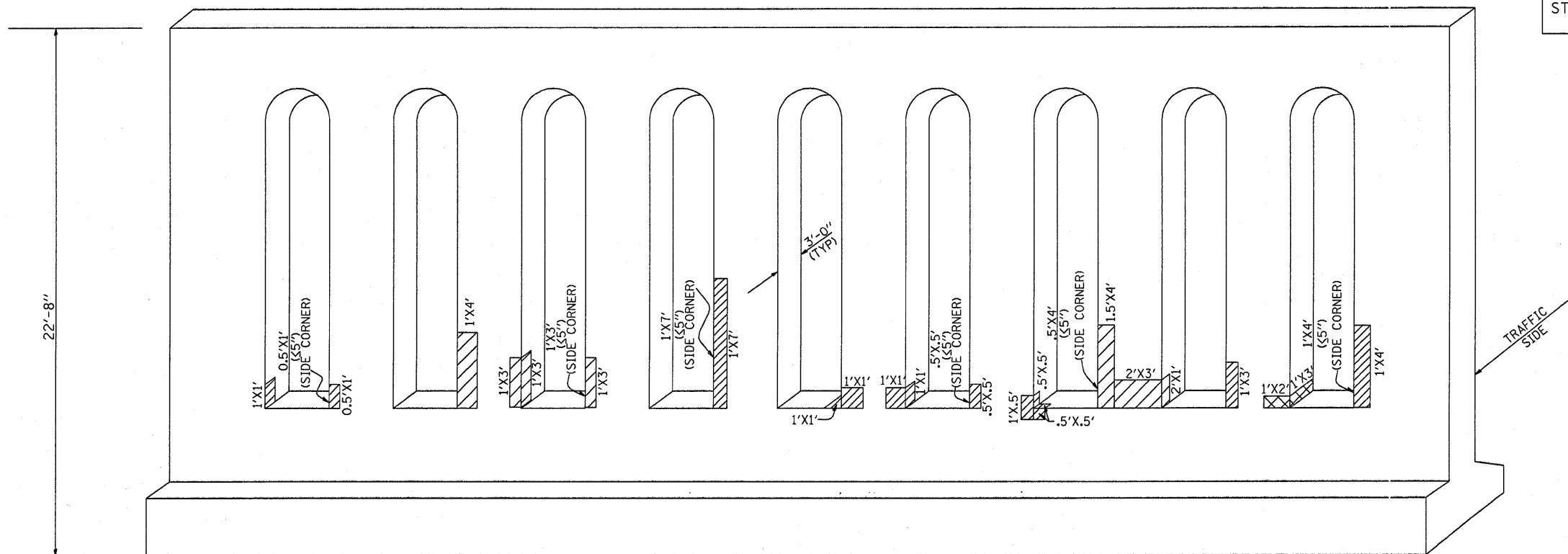
SOUTH ABUTMENT FRONT WALL (SOUTH FACE)  
(LOOKING NORTH)

	STRUCTURAL REPAIR OF CONCRETE > 5"
	STRUCTURAL REPAIR OF CONCRETE ≤ 5"

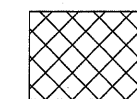


NORTH ABUTMENT FRONT WALL (SOUTH FACE)  
(LOOKING NORTH)

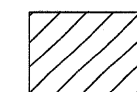
NORTH ABUT. FRONT WALL BILL OF MATERIAL	UNIT	QUANTITY
STRUCTURAL REPAIR OF CONCRETE > 5"	SQ FT	46
STRUCTURAL REPAIR OF CONCRETE ≤ 5"	SQ FT	93



NORTH ABUTMENT FRONT WALL (NORTH FACE)  
(LOOKING SOUTH)



STRUCTURAL REPAIR OF CONCRETE > 5"

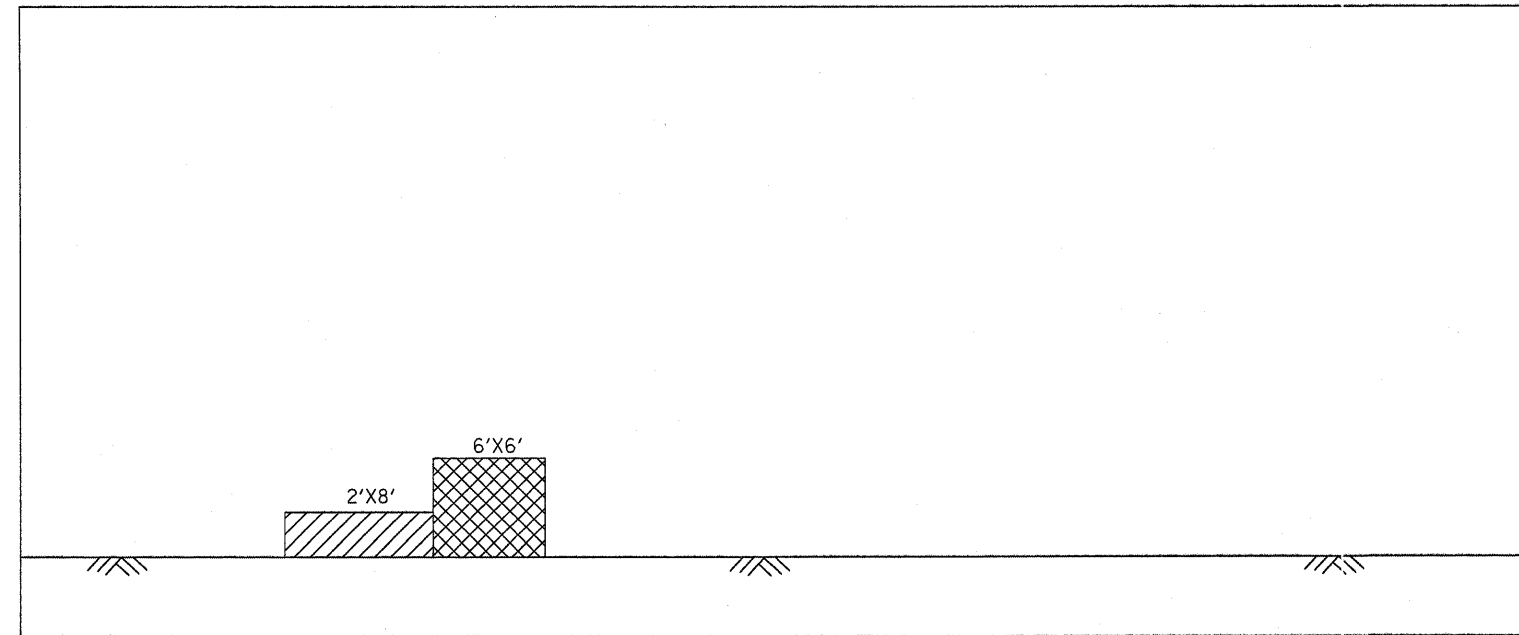


STRUCTURAL REPAIR OF CONCRETE ≤ 5"

SHEET 2 OF 3

FILE NAME = c:\projects\dl20507\wc_r_r_over_1164.dgn	USER NAME = mcdjje	DESIGNED -	REVISED -	<b>STATE OF ILLINOIS DEPARTMENT OF TRANSPORTATION</b>	<b>LOCATION 3: SN 016-0500, -1126 NORTH ABUTMENT STRUCTURAL REPAIR SHEET 2 OF 3</b>	F.A. RTE. SECTION	COUNTY	TOTAL SHEETS	SHEET NO.
PLOT SCALE = 50.0000' / IN.	CHECKED -	REVISED -	VARIOUS			2007-0071	VARIOUS	25	18
PLOT DATE = 12/28/2007	DATE -	REVISED -	CONTRACT NO. 60C36						
						FED. ROAD DIST. NO. 1 ILLINOIS FED. AID PROJECT			

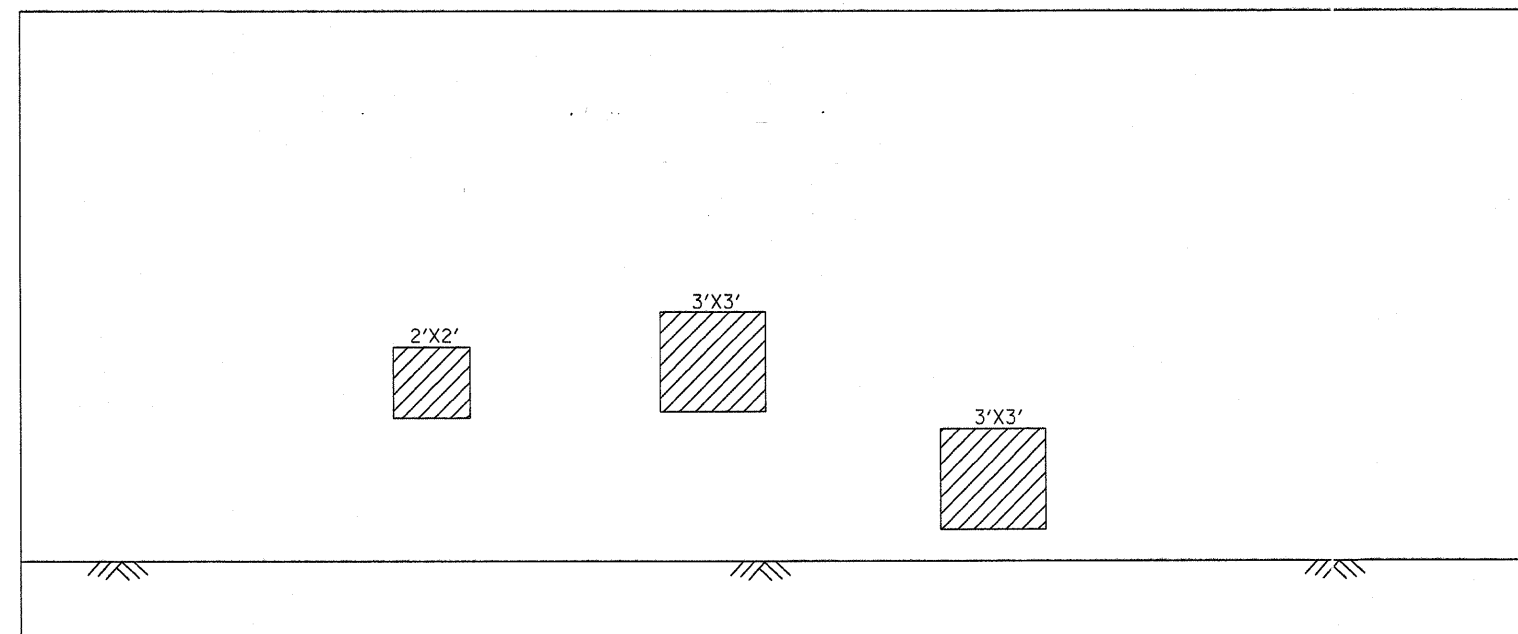
SOUTH ABUT. BACK WALL BILL OF MATERIAL	UNIT	QUANTITY
STRUCTURAL REPAIR OF CONCRETE > 5"	SQ FT	36
STRUCTURAL REPAIR OF CONCRETE ≤ 5"	SQ FT	16



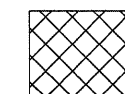
SOUTH ABUTMENT BACK WALL  
(LOOKING SOUTH)

SN 016-0500 & -1126 TOTAL BILL OF MATERIAL	UNIT	QUANTITY
STRUCTURAL REPAIR OF CONCRETE > 5"	SQ FT	104
STRUCTURAL REPAIR OF CONCRETE ≤ 5"	SQ FT	230

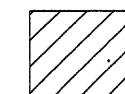
PIER 1 BILL OF MATERIAL	UNIT	QUANTITY
STRUCTURAL REPAIR OF CONCRETE ≤ 5"	SQ FT	22



PIER 1 (SOUTH FACE)  
(LOOKING NORTH)



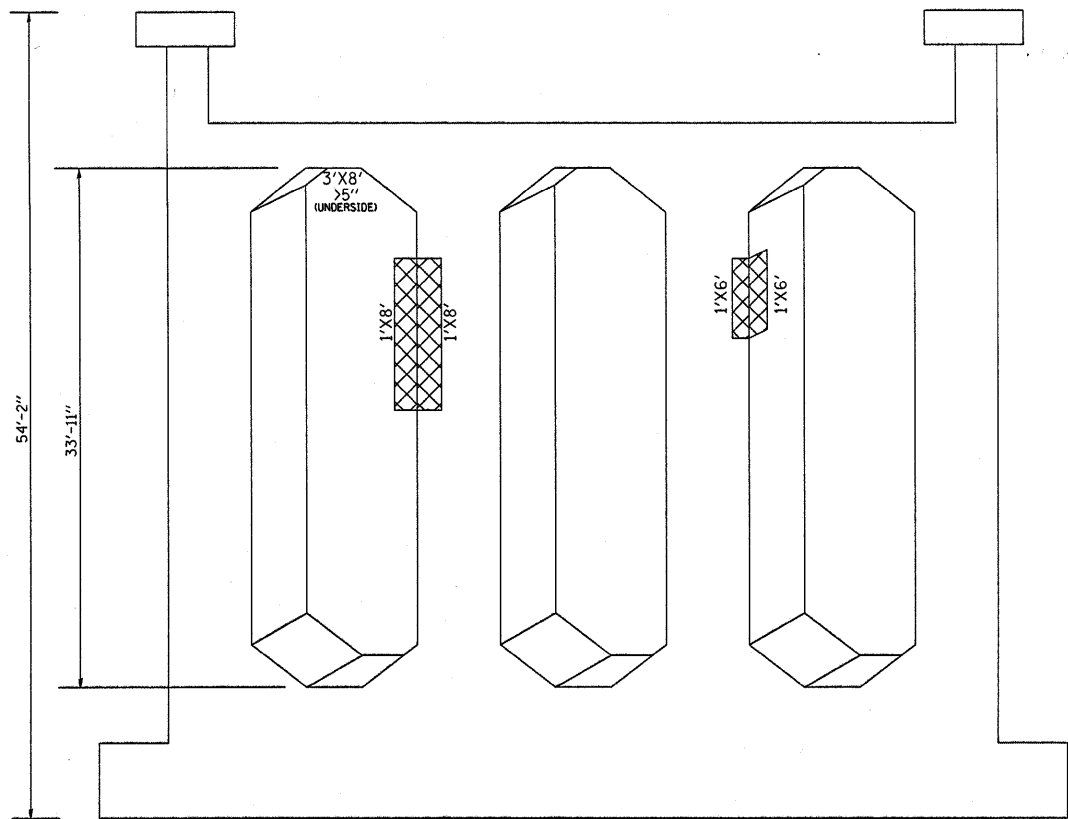
STRUCTURAL REPAIR OF CONCRETE > 5"



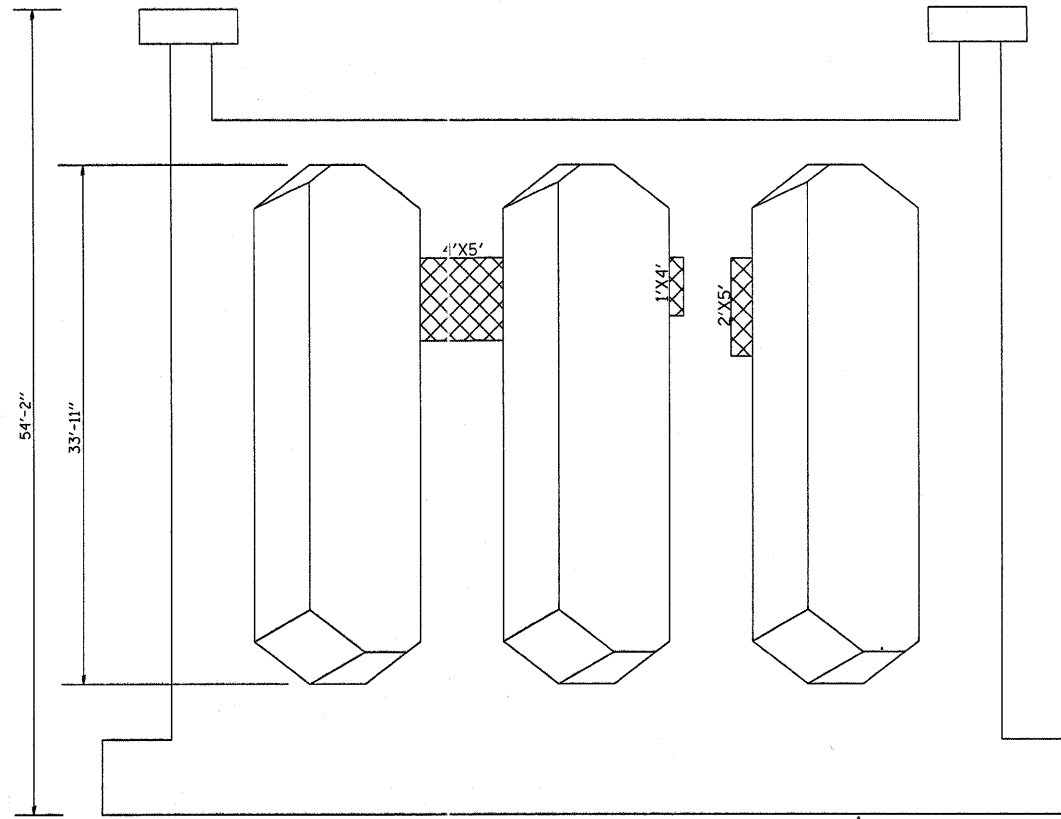
STRUCTURAL REPAIR OF CONCRETE ≤ 5"

SHEET 3 OF 3

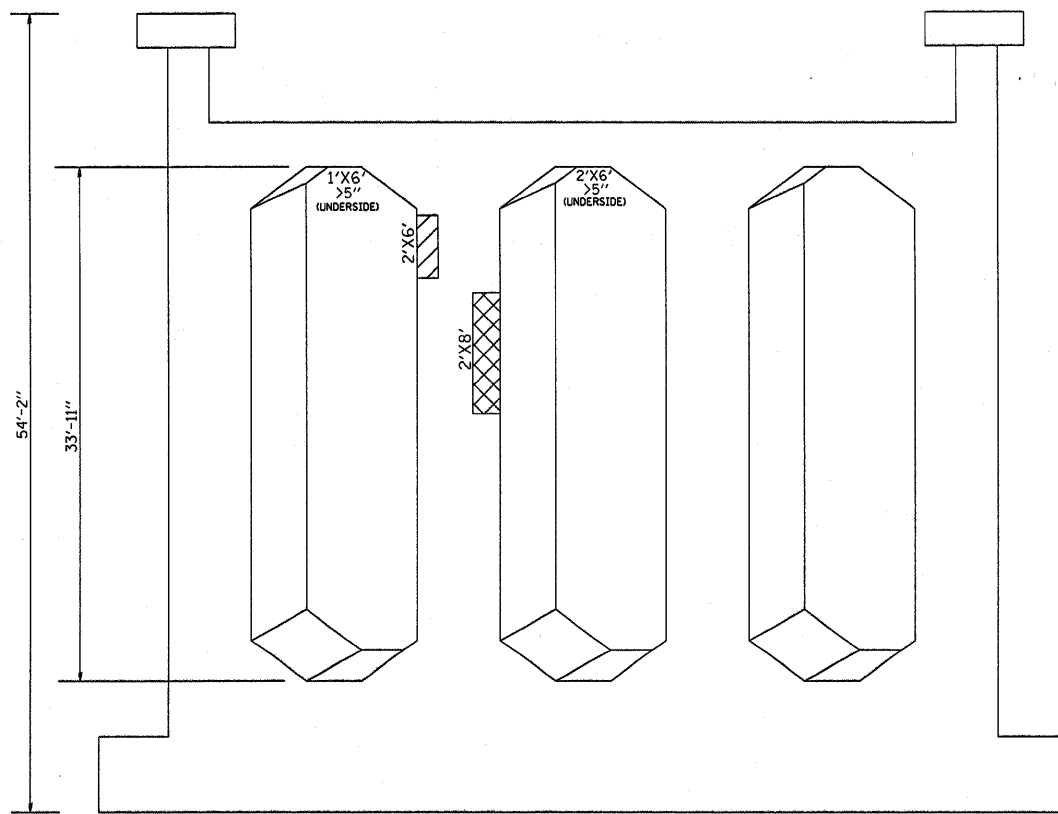
FILE NAME =	USER NAME = midjja	DESIGNED -	REVISED -	<b>STATE OF ILLINOIS DEPARTMENT OF TRANSPORTATION</b>	<b>LOCATION 3: SN 016-0500, -1126 PIER 1 AND SOUTH ABUTMENT STRUCTURAL REPAIR SHEET 3 OF 3</b>	F.A. RTE. =	SECTION	COUNTY	TOTAL SHEETS	SHEET NO.	
ei:\projects\dl20507\wo_rr_cover_1164.dgn		DRAWN -	REVISED -			VARIOUS	2007-007I	VARIOUS	25	19	
		CHECKED -	REVISED -			CONTRACT NO. 60C36					
		PLOT SCALE = 50.0000' / IN.	REVISED -			FED. ROAD DIST. NO. 1 ILLINOIS FED. AID PROJECT					
		PLOT DATE = 12/28/2007	DATE -	REVISED -	SCALE:	SHEET NO.	OF	SHEETS	STA.	TO STA.	



PIER 1  
SOUTH FACE  
(LOOKING NORTH)



PIER 1  
NORTH FACE  
(LOOKING SOUTH)



PIER 2  
SOUTH FACE  
(LOOKING NORTH)

PIER 1 & 2 BILL OF MATERIAL	UNIT	QUANTITY
STRUCTURAL REPAIR OF CONCRETE > 5"	SQ FT	132
STRUCTURAL REPAIR OF CONCRETE ≤ 5"	SQ FT	12

- STRUCTURAL REPAIR OF CONCRETE > 5"
- STRUCTURAL REPAIR OF CONCRETE ≤ 5"

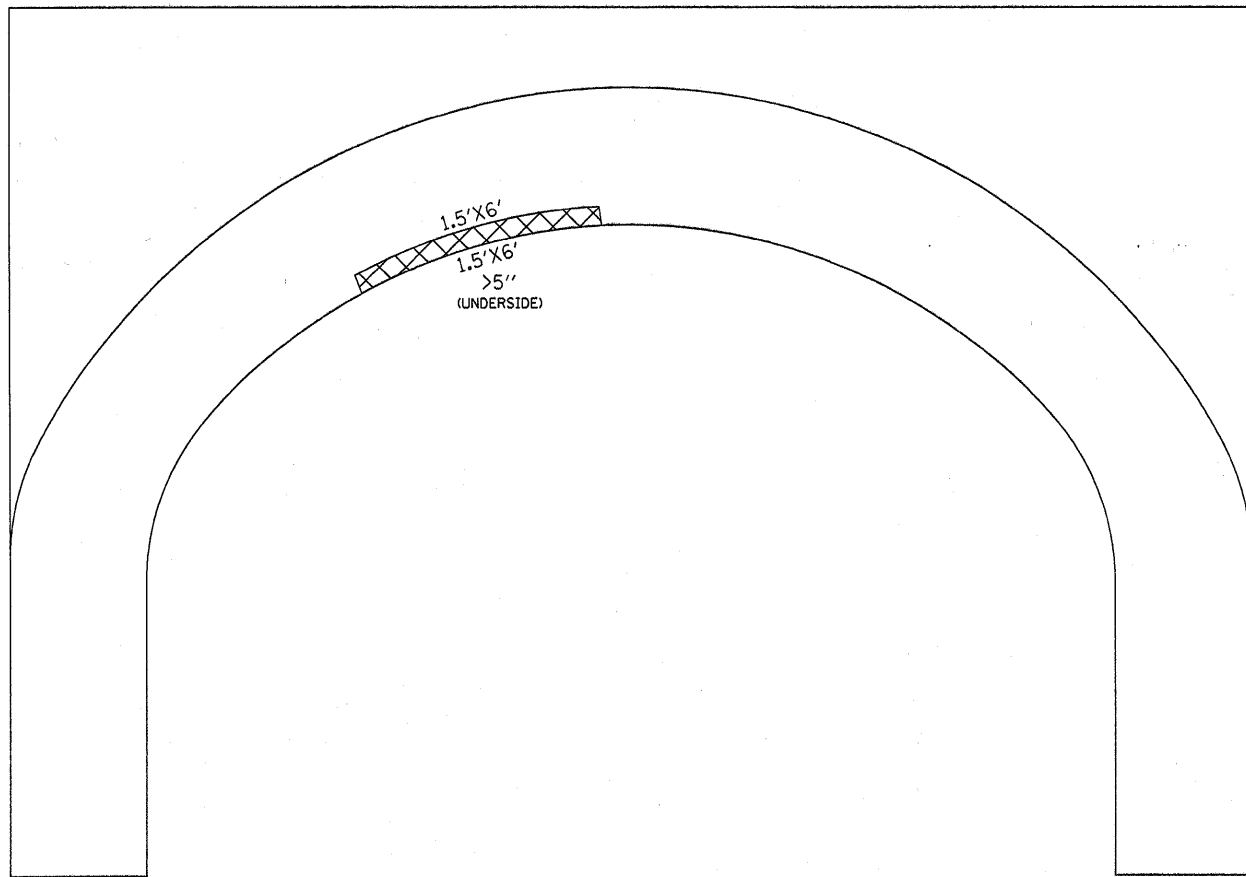
FILE NAME =	USER NAME = msdy.je	DESIGNED -	REVISED -
ci:\projects\dl20507\sherdan@ravines.dgn		DRAWN -	REVISED -
PLOT SCALE = 68.4000' / IN.		CHECKED -	REVISED -
PLOT DATE = 12/28/2007		DATE -	REVISED -

STATE OF ILLINOIS  
DEPARTMENT OF TRANSPORTATION

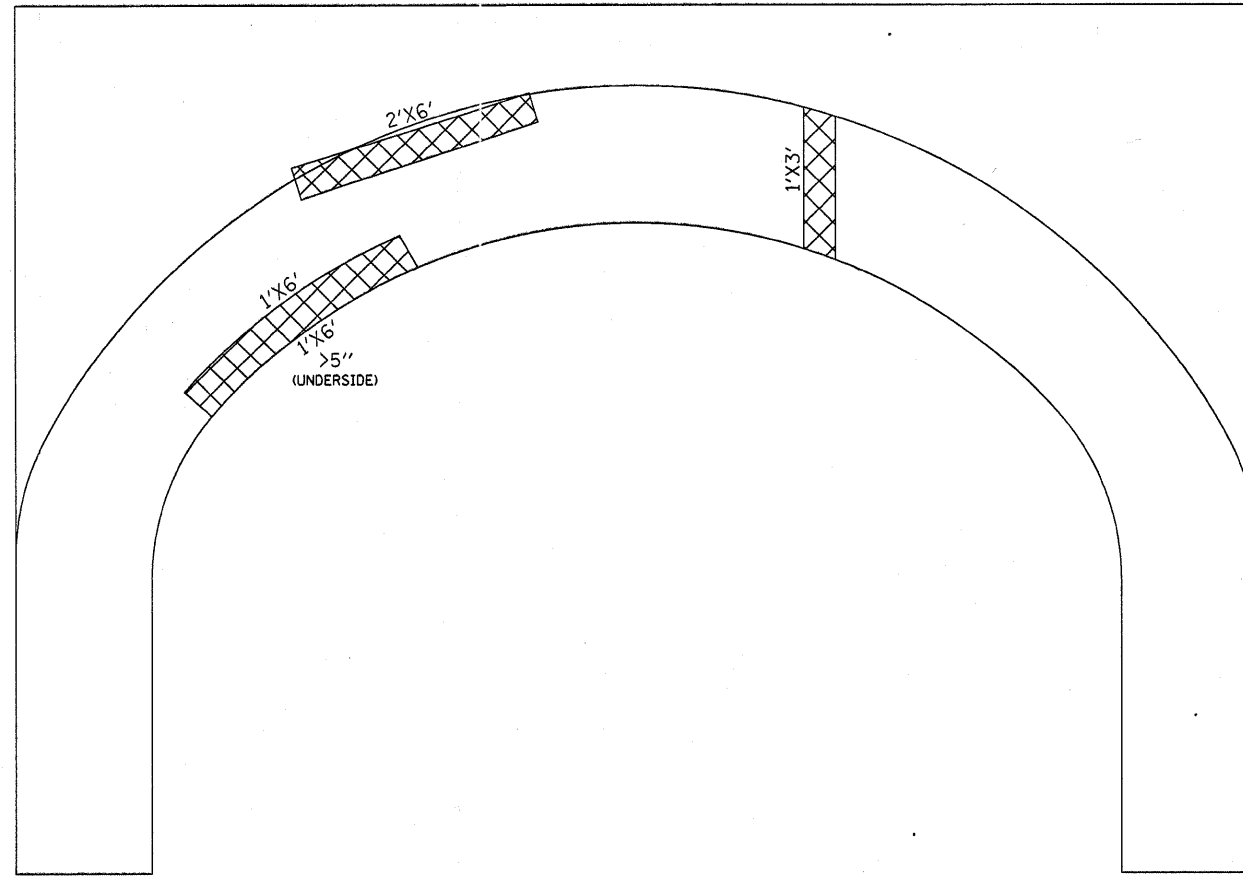
LOCATION 4: SN 016-0617  
PIER STRUCTURAL REPAIR SHEET 1 OF 2

SCALE: SHEET NO. OF SHEETS STA. TO STA.

F.A. RTE.	SECTION	COUNTY	TOTAL SHEETS	SHEET NO.
VARIOUS	2007-0071	VARIOUS	25	20
FED. ROAD DIST. NO. 1 ILLINOIS FED. AID PROJECT			CONTRACT NO. 60C36	



INSIDE VIEW (EAST FACE) OF WEST ARCH SPAN 3



INSIDE VIEW (WEST FACE) OF EAST ARCH SPAN 3

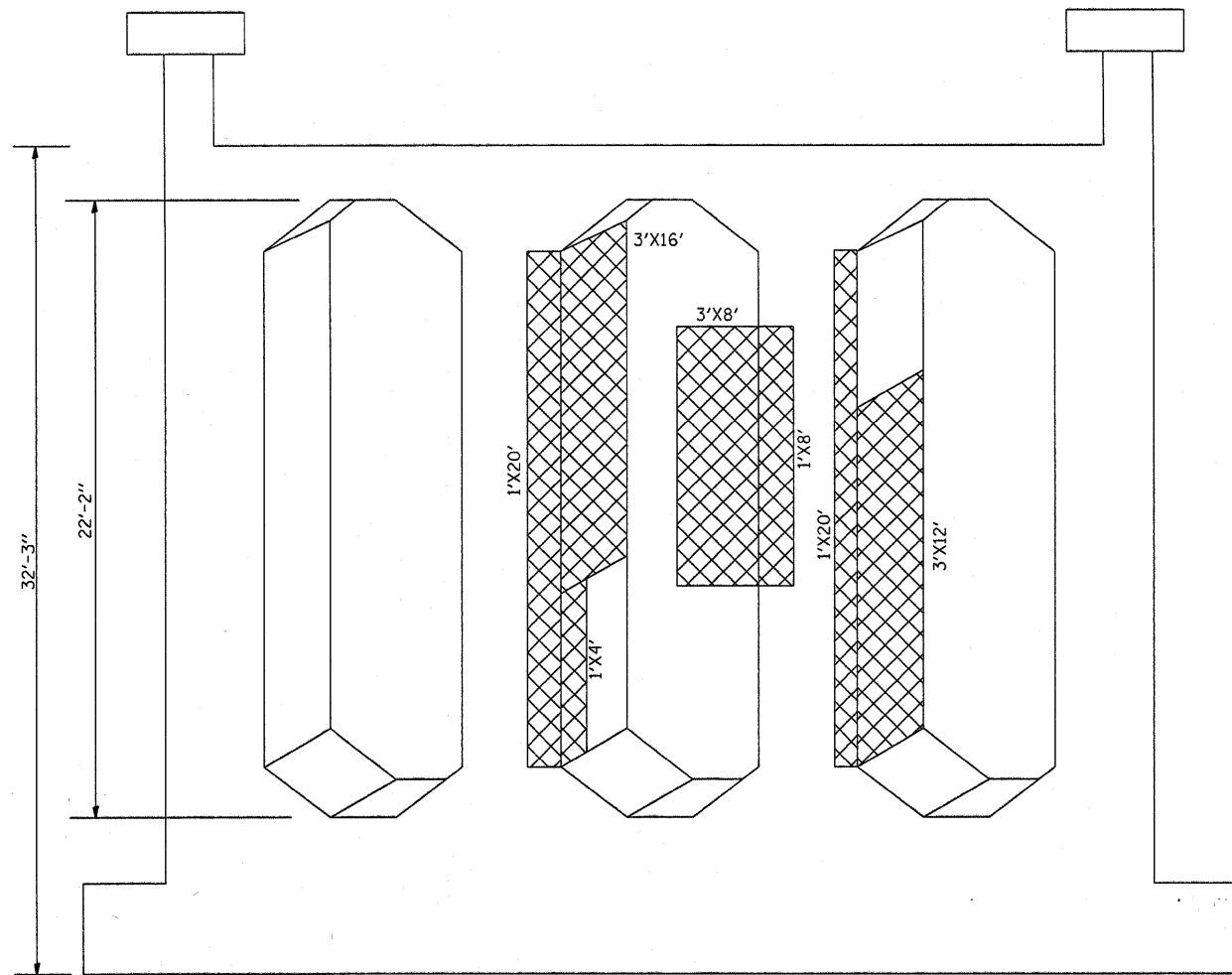
EAST & WEST ARCH BILL OF MATERIAL	UNIT	QUANTITY
STRUCTURAL REPAIR OF CONCRETE > 5"	SQ FT	45

SN 016-0617 TOTAL BILL OF MATERIAL	UNIT	QUANTITY
STRUCTURAL REPAIR OF CONCRETE > 5"	SQ FT	165
STRUCTURAL REPAIR OF CONCRETE ≤ 5"	SQ FT	12

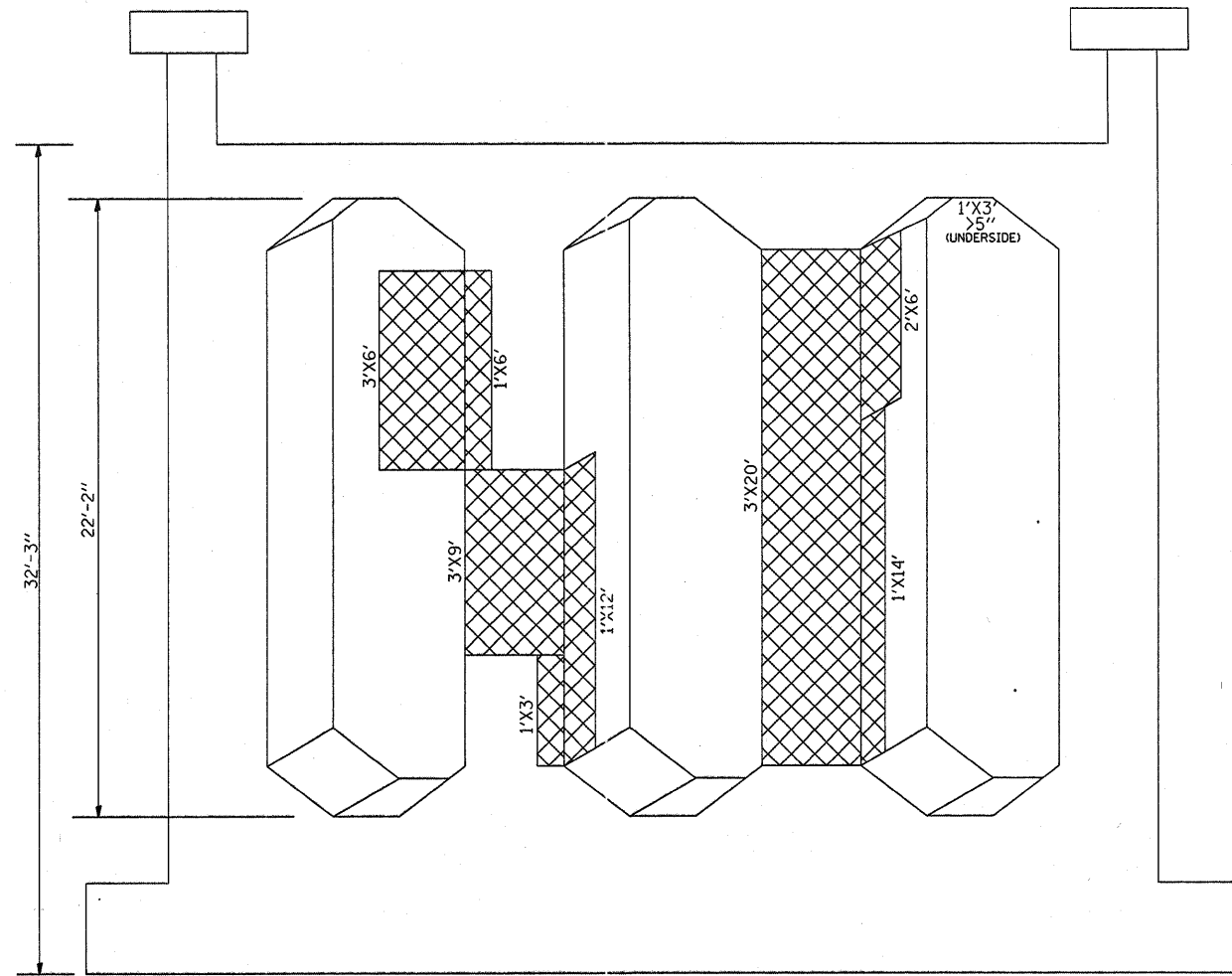


STRUCTURAL REPAIR OF CONCRETE > 5"

SHEET 2 OF 2

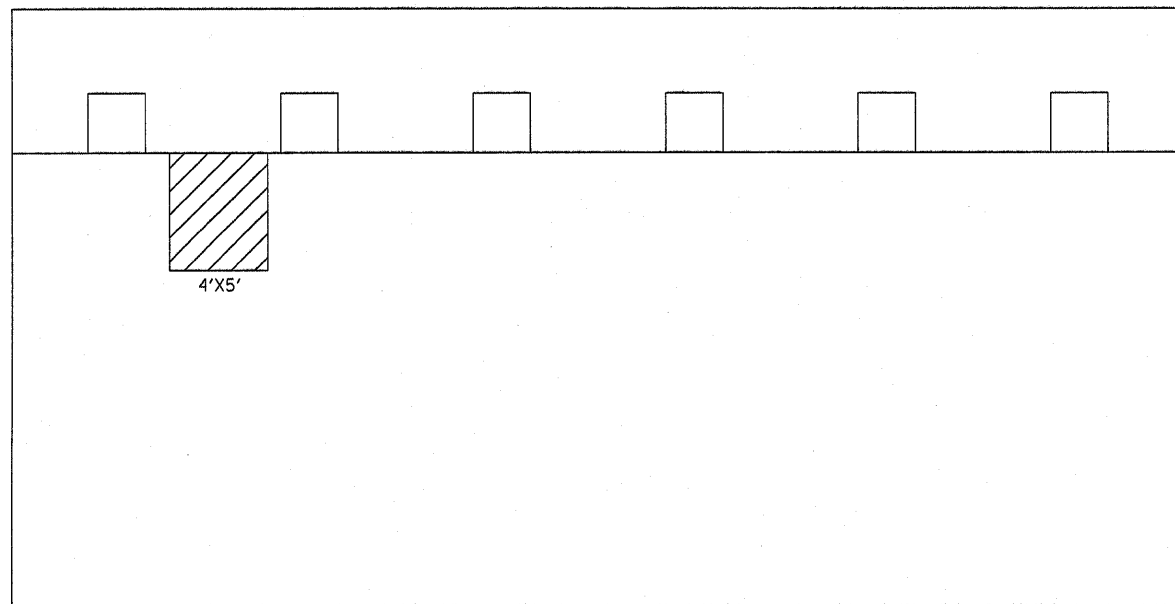


PIER 1  
NORTH FACE  
(LOOKING SOUTH)



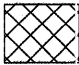
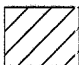
PIER 1  
SOUTH FACE  
(LOOKING NORTH)

WORK ON INTERIOR COLUMN FACES SHOULD BE DONE IN SEQUENCE SO ADJACENT FACES OF THE SAME COLUMN ARE NOT DONE SIMULTANEOUSLY.



SOUTH ABUTMENT  
LOOKING SOUTH

SN 016-0618 TOTAL BILL OF MATERIAL	UNIT	QUANTITY
STRUCTURAL REPAIR OF CONCRETE > 5"	SQ FT	315
STRUCTURAL REPAIR OF CONCRETE ≤ 5"	SQ FT	20

-  STRUCTURAL REPAIR OF CONCRETE > 5"
-  STRUCTURAL REPAIR OF CONCRETE ≤ 5"

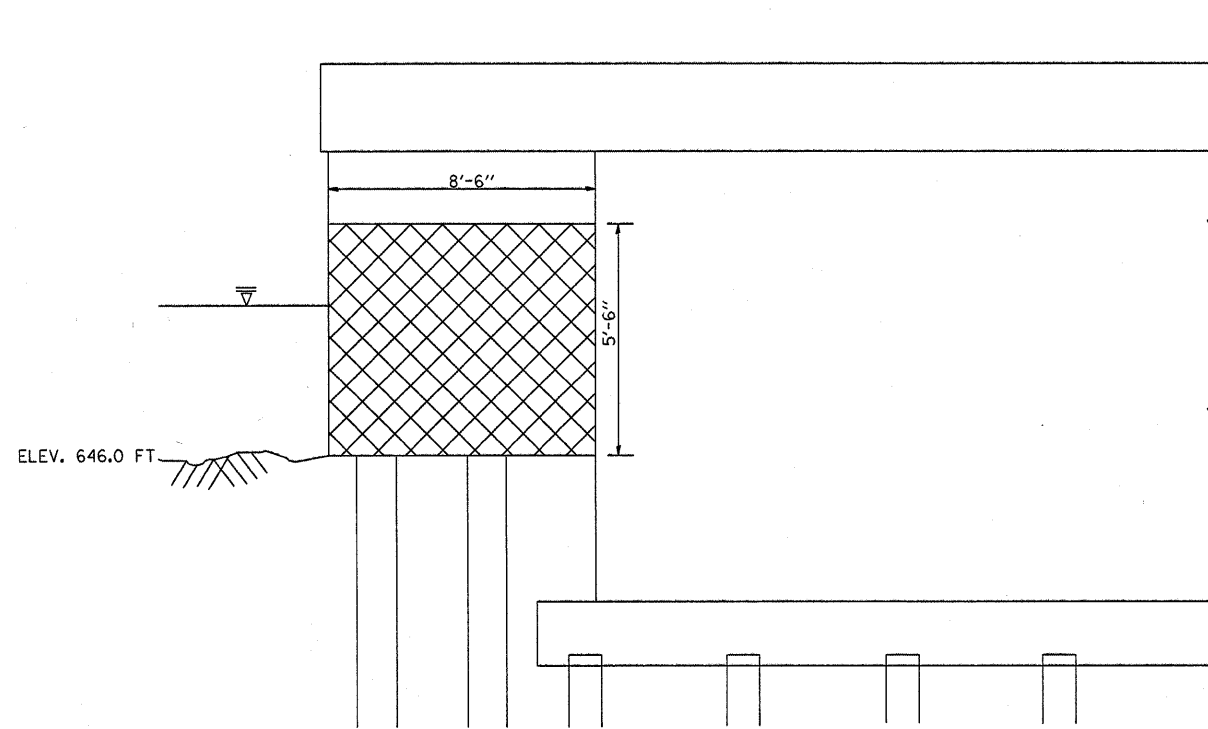
FILE NAME =	USER NAME = midyja	DESIGNED -	REVISED -
c:\projects\dl20507\sherdan@ravines.dgn		DRAWN -	REVISED -
		CHECKED -	REVISED -
		DATE -	REVISED -

STATE OF ILLINOIS  
DEPARTMENT OF TRANSPORTATION

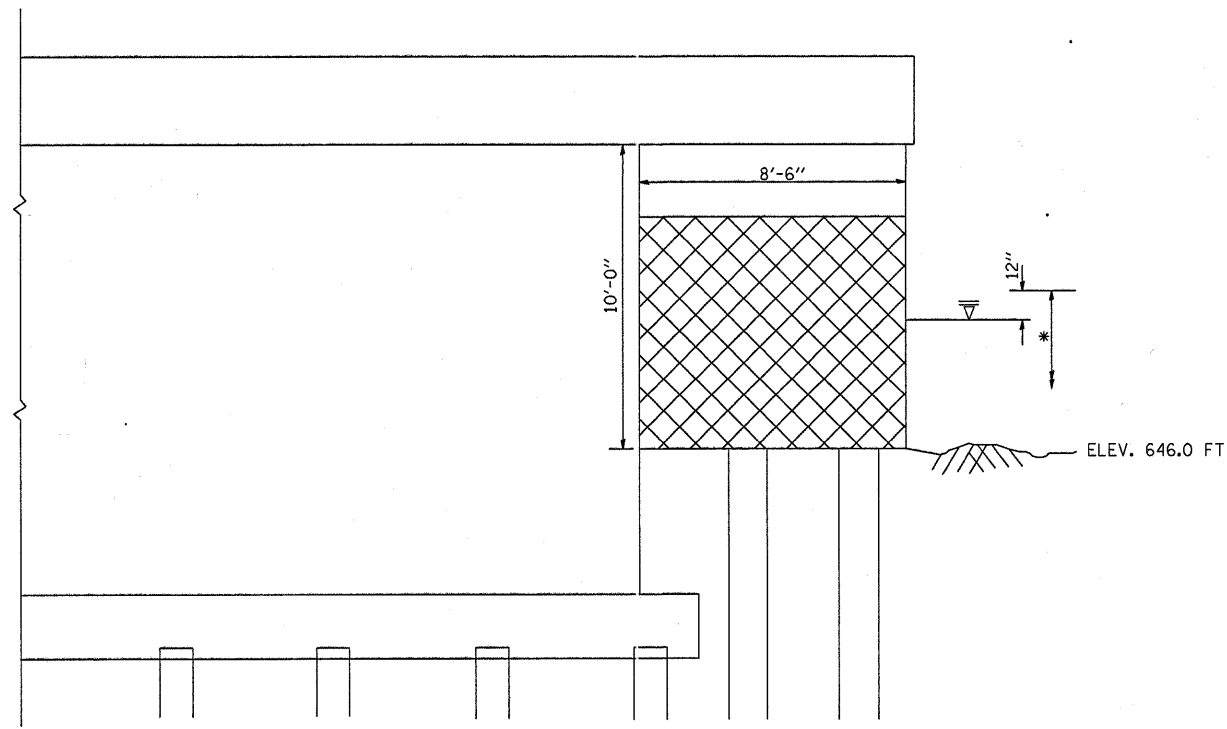
LOCATION 5: SN 016-0618  
STRUCTURAL REPAIR

SCALE: SHEET NO. OF SHEETS STA. TO STA.

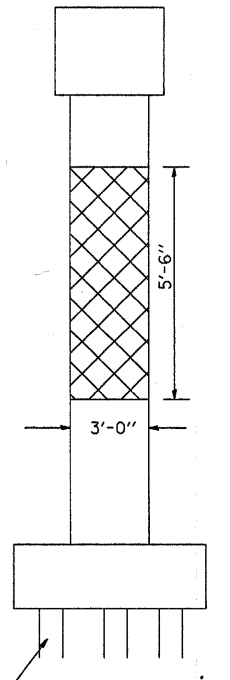
F.A. RTE.	SECTION	COUNTY	TOTAL SHEETS	SHEET NO.
VARIOUS	2007-0071	VARIOUS	25	22
CONTRACT NO. 60C36				
FED. ROAD DIST. NO. 1 ILLINOIS FED. AID PROJECT				



WEST ELEVATION PIER 1  
(LOOKING EAST)



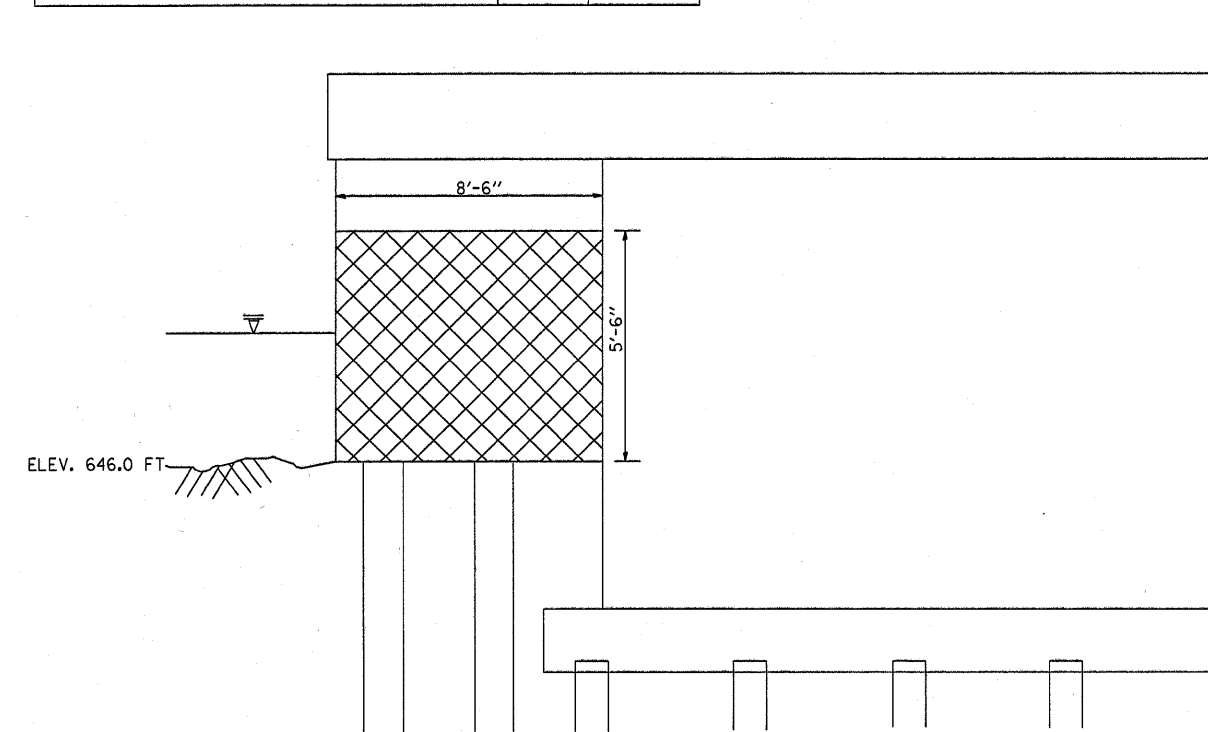
EAST ELEVATION PIER 1  
(LOOKING WEST)



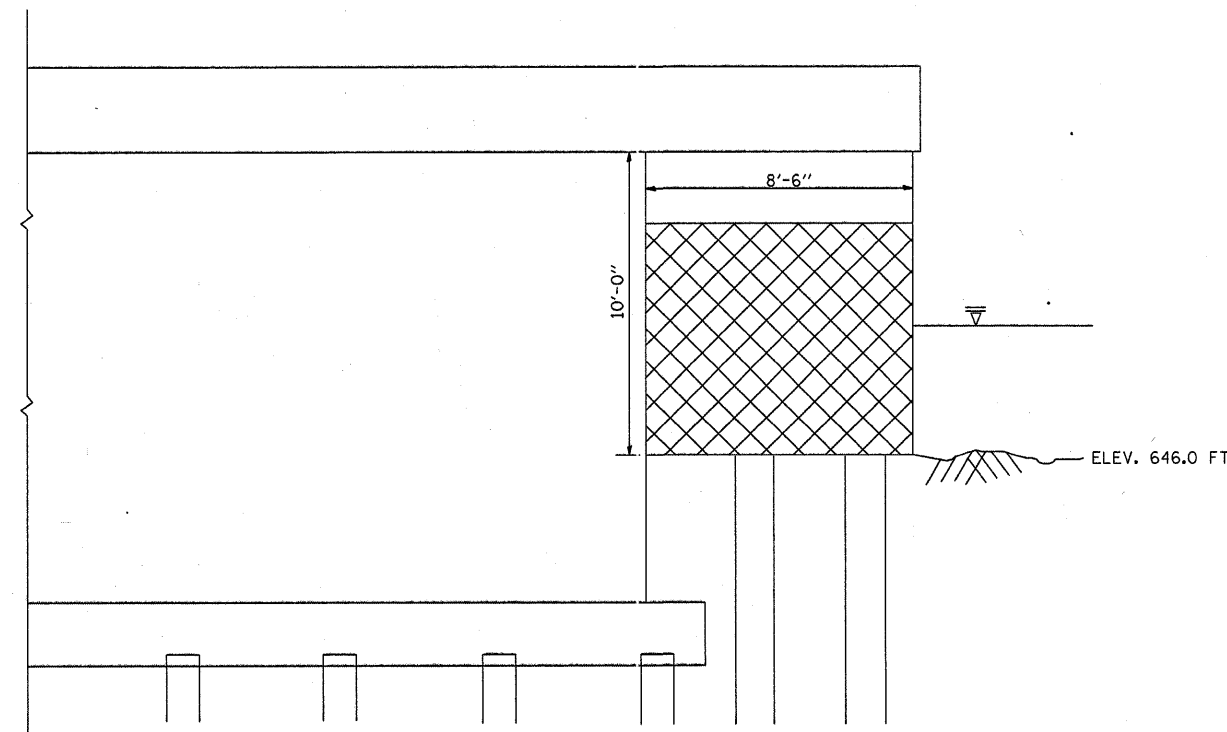
EXISTING PILES (TYP.)

PIER 1 BILL OF MATERIAL	UNIT	QUANTITY
STRUCTURAL REPAIR OF CONCRETE > 5"	SQ FT	220

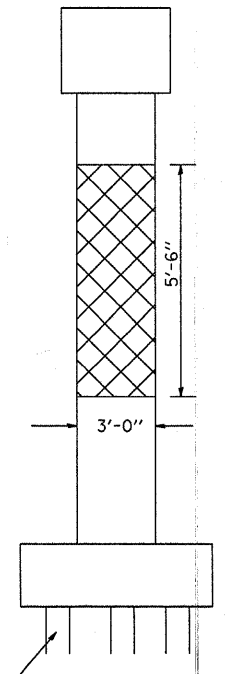
\* TREMIE CONCRETE IN ACCORDANCE TO ARTICLE 503.08 OF THE STD. SPECS. (TYPICAL AT ALL LOCATIONS)



EXISTING PILES (TYP.)



EAST ELEVATION PIER 1  
(LOOKING WEST)



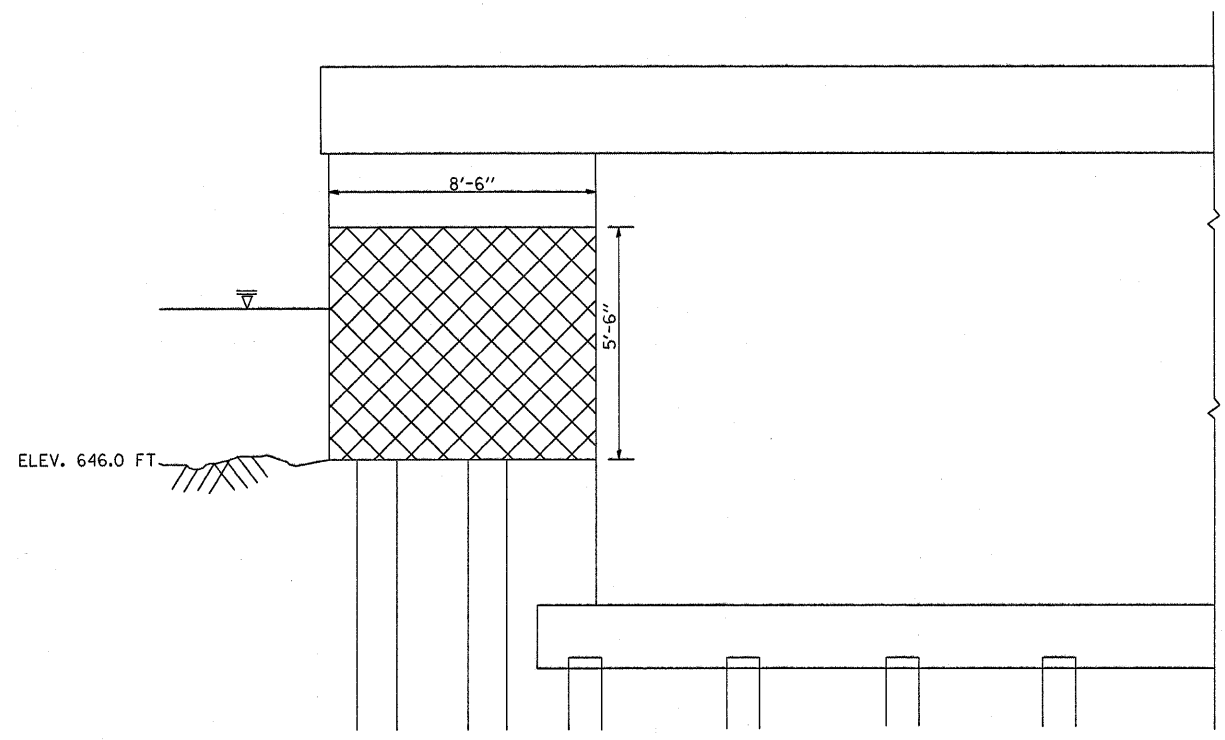
EXISTING PILES (TYP.)



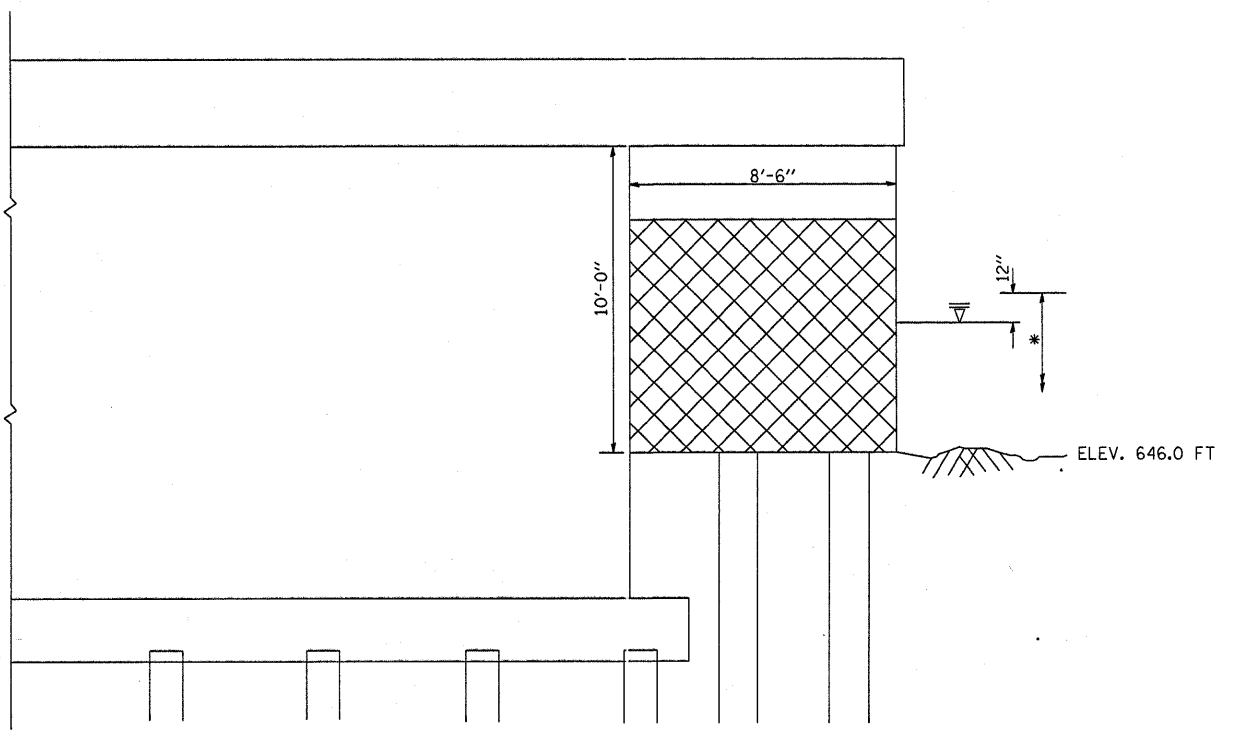
STRUCTURAL REPAIR OF CONCRETE > 5"

SHEET 1 OF 2

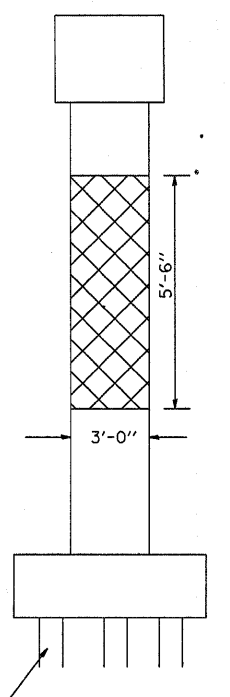
FILE NAME =	USER NAME = mdyja	DESIGNED -	REVISED -	<b>STATE OF ILLINOIS DEPARTMENT OF TRANSPORTATION</b>	<b>LOCATION 6: SN 022-0026 PIER 1 STRUCTURAL REPAIR</b>	<b>SHEET 1 OF 2</b>	F.A. RTE.	SECTION	COUNTY	TOTAL SHEETS	SHEET NO.
01\projects\dl20507\1130salt.creek.dgn		DRAWN -	REVISED -				VARIOUS	2007-0071	VARIOUS	25	23
PLOT SCALE = 50,0000' / IN.		CHECKED -	REVISED -				CONTRACT NO. 60C36				
PLOT DATE = 12/28/2007		DATE -	REVISED -				FED. ROAD DIST. NO. 1 ILLINOIS FED. AID PROJECT				
				SCALE:	SHEET NO. OF SHEETS STA.	TO STA.					



WEST ELEVATION PIER 2  
(LOOKING EAST)



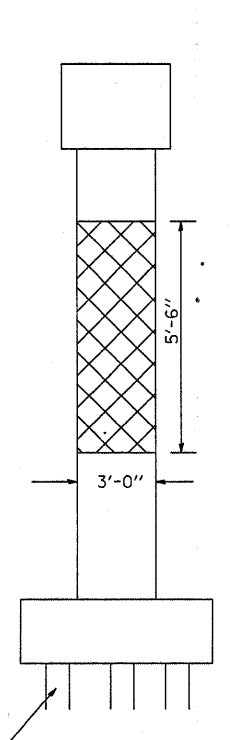
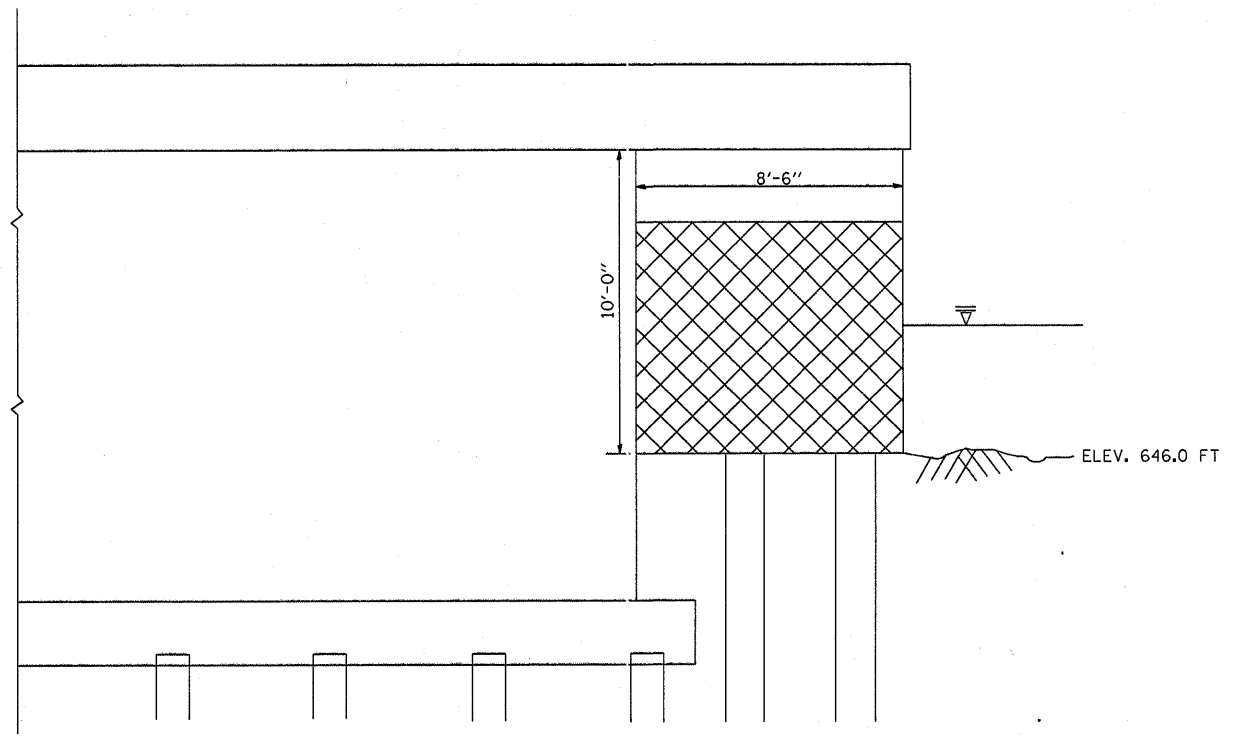
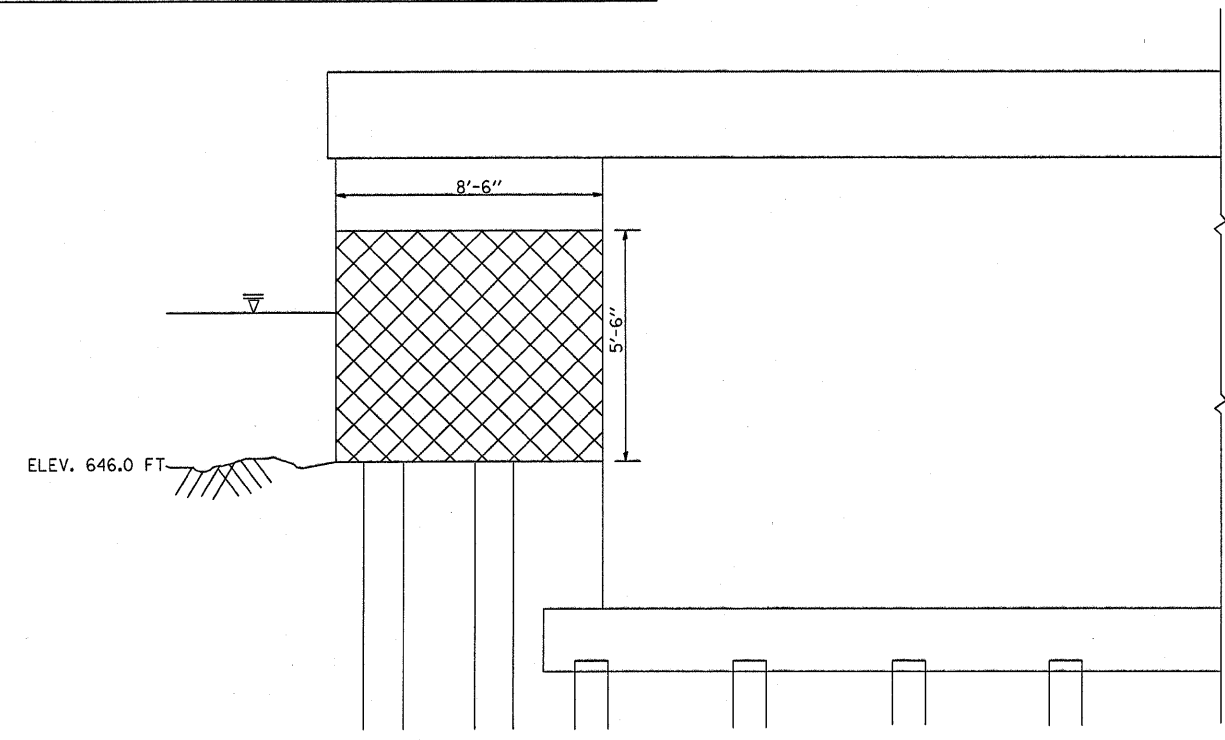
EAST ELEVATION PIER 2  
(LOOKING WEST)



EXISTING PILES (TYP.)

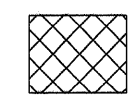
PIER 2 BILL OF MATERIAL	UNIT	QUANTITY
STRUCTURAL REPAIR OF CONCRETE > 5"	SQ FT	220

\* TREMIE CONCRETE IN ACCORDANCE TO ARTICLE 503.08 OF THE STD. SPECS. (TYPICAL AT ALL LOCATIONS)



EXISTING PILES (TYP.)

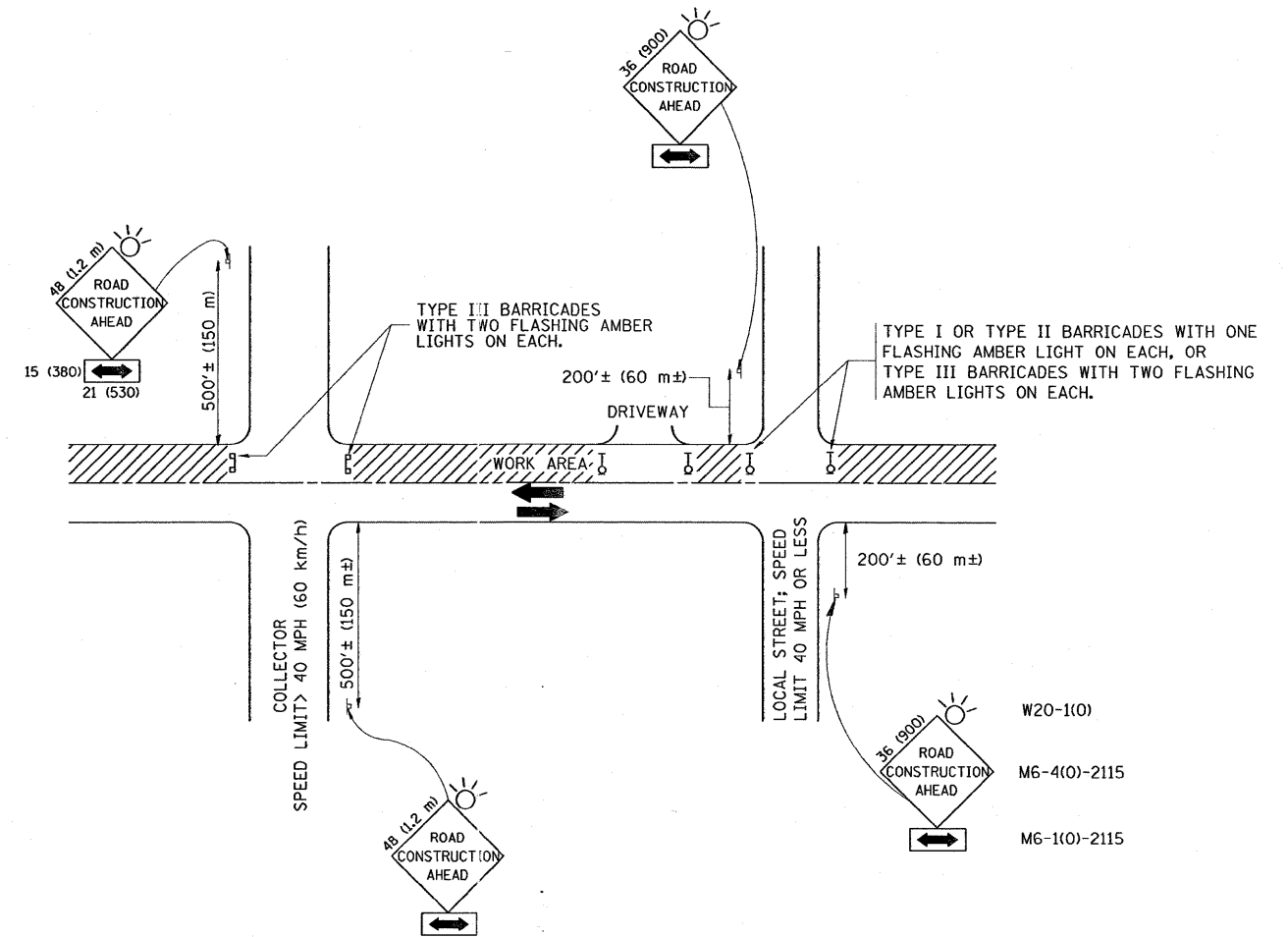
SN 022-0026 TOTAL BILL OF MATERIAL	UNIT	QUANTITY
STRUCTURAL REPAIR OF CONCRETE > 5"	SQ FT	440



STRUCTURAL REPAIR OF CONCRETE > 5"

SHEET 2 OF 2





TRAFFIC CONTROL AND PROTECTION FOR SIDE ROADS, INTERSECTIONS, AND DRIVEWAYS

NOTES:

A. FOR NO LANE RESTRICTION ON THE SIDE ROAD OR DRIVEWAYS

1. SIDE ROAD WITH A SPEED LIMIT OF 40 MPH (60 km/h) OR LESS AS SHOWN ON THE DRAWING AND AS DIRECTED BY THE ENGINEER:

a) ONE ROAD CONSTRUCTION AHEAD SIGN 36 x 36 (900x900) WITH A FLASHER AND FLAG MOUNTED ON IT APPROXIMATELY 200' (60 m) IN ADVANCE OF THE MAIN ROUTE.

b) THE CLOSED PORTION OF THE MAIN ROUTE SHALL BE PROTECTED BY BLOCKING WITH TYPE I, TYPE II OR TYPE III BARRICADES, 1/3 OF THE CROSS SECTION OF THE CLOSED PORTION.

2. SIDE ROAD WITH A SPEED LIMIT GREATER THAN 40 MPH (60 km/h) AS SHOWN ON THE DRAWING AND AS DIRECTED BY THE ENGINEER:

a) ONE ROAD CONSTRUCTION AHEAD SIGN 48 x 48 (1.2 m x 1.2 m) WITH A FLASHER MOUNTED ON IT APPROXIMATELY 500' (150 m) IN ADVANCE OF THE MAIN ROUTE.

b) THE CLOSED PORTION OF THE MAIN ROUTE SHALL BE PROTECTED BY BLOCKING WITH TYPE III BARRICADES, 1/2 OF THE CROSS SECTION OF THE CLOSED PORTION.

3. WHEN THE SIDE ROAD LIES BETWEEN THE BEGINNING OF THE MAINLINE SIGNING AND THE WORK ZONE, A SINGLE HEADED ARROW (M6-1) SHALL BE USED IN LIEU OF THE DOUBLE HEADED ARROW (M6-4).

B. FOR A LANE CLOSURE ON A SIDE ROAD OR DRIVEWAY:

USE APPLICABLE PORTIONS OF THE TYPICAL APPLICATION OF TRAFFIC CONTROL DEVICES (STD. 701501, STD. 701606 OR THE APPROPRIATE STANDARD). THE SPACING OF SIGNS AND BARRICADES SHALL BE ADJUSTED FOR FIELD CONDITIONS AS DIRECTED BY THE ENGINEER. THE DIRECTIONAL ARROW SHALL BE COVERED OR REMOVED WHEN NO LONGER CONSISTENT WITH THE SIDE ROAD LANE CLOSURE.

C. ADVANCE WARNING SIGNS ARE TO BE OMITTED ON DRIVEWAY UNLESS OTHERWISE NOTED.

D. THE TRAFFIC CONTROL AND PROTECTION FOR SIDE ROADS, INTERSECTIONS, AND DRIVEWAYS SHALL BE INCIDENTAL TO THE COST OF SPECIFIED TRAFFIC CONTROL STANDARDS OR ITEMS.

All dimensions are in millimeters (Inches) unless otherwise shown.

FILE NAME =	USER NAME = lszekrf	DESIGNED - LHA	REVISED - J. OBERLE 10-18-95
ct:\Projects\diststd2007\tcl0.dgn		DRAWN -	REVISED - A. HOUSEH 03-06-96
PLOT SCALE = 50.000 / IN.		CHECKED -	REVISED - A. HOUSEH 10-15-96
PLOT DATE = 12/28/2007		DATE - 06-89	REVISED - T. RAMMACHER 01-06-00

STATE OF ILLINOIS  
DEPARTMENT OF TRANSPORTATION

TRAFFIC CONTROL AND PROTECTION FOR  
SIDE ROADS, INTERSECTIONS, AND DRIVEWAYS

SCALE: NONE SHEET NO. 1 OF 1 SHEETS STA. TO STA.

F.A. RTE.	SECTION	COUNTY	TOTAL SHEETS	SHEET NO.
VARIOUS	2007-007 I	VARIOUS	25	25
TC-10			CONTRACT NO. 60C36	
FED. ROAD DIST. NO. 1 ILLINOIS FED. AID PROJECT				