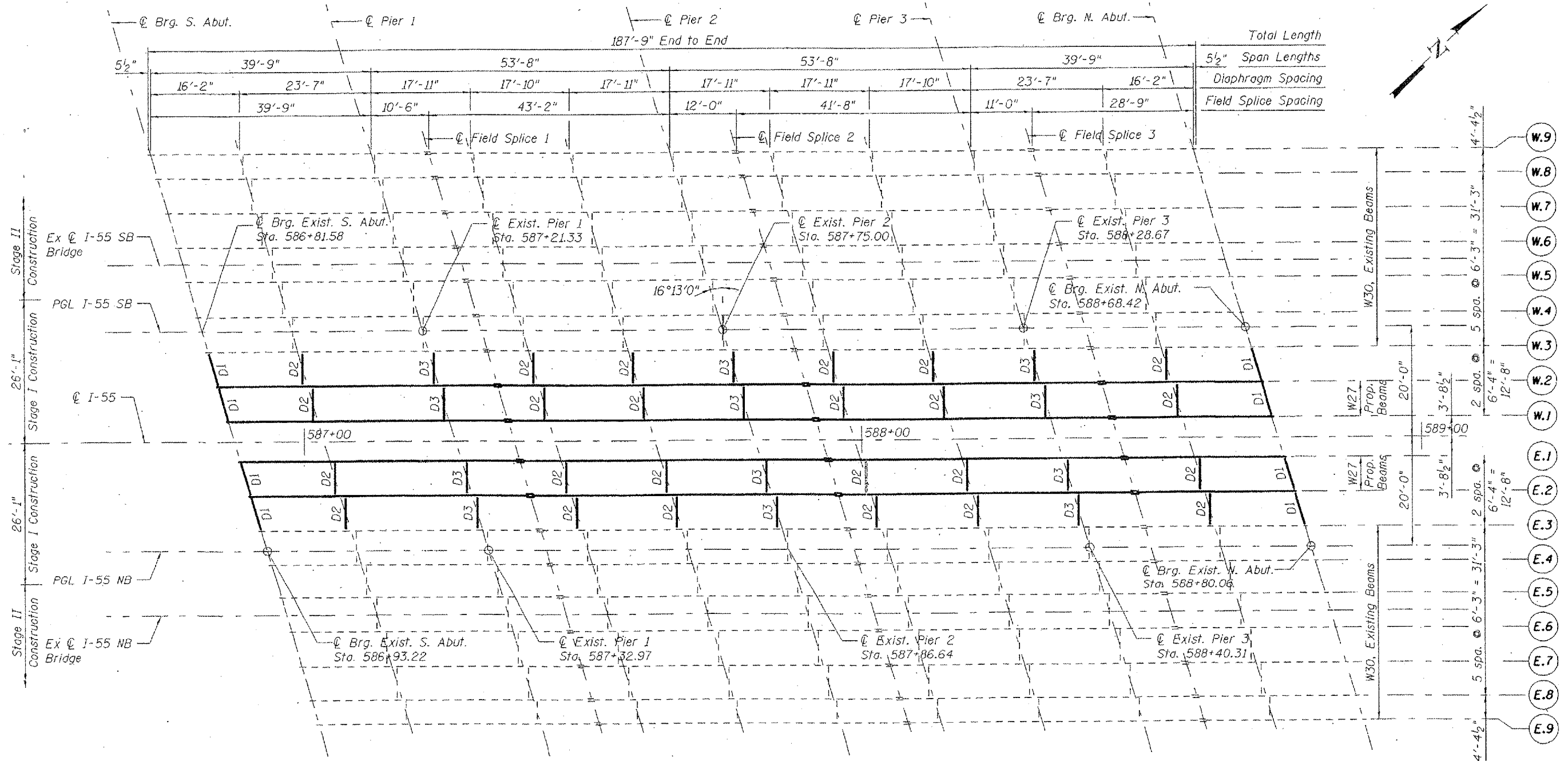


ROUTE	SECTION	COUNTY	TOTAL SHEETS	SHEET NUMBER
VARIOUS	2007-041 BP	VARIOUS	25	9

CONTRACT NO. 60D31



FRAMING PLAN

END DIAPHRAGMS

PROPOSED W12X40
D1.
EXISTING W12X40

PROPOSED W27X129
BEAMS
EXISTING W30X108

SHEET 2 OF 2

LOCATION NO.1

**EXIST. BRIDGE PLANS
I-55 NB & SB OVER US 30
SN: 099-0016, -0017**