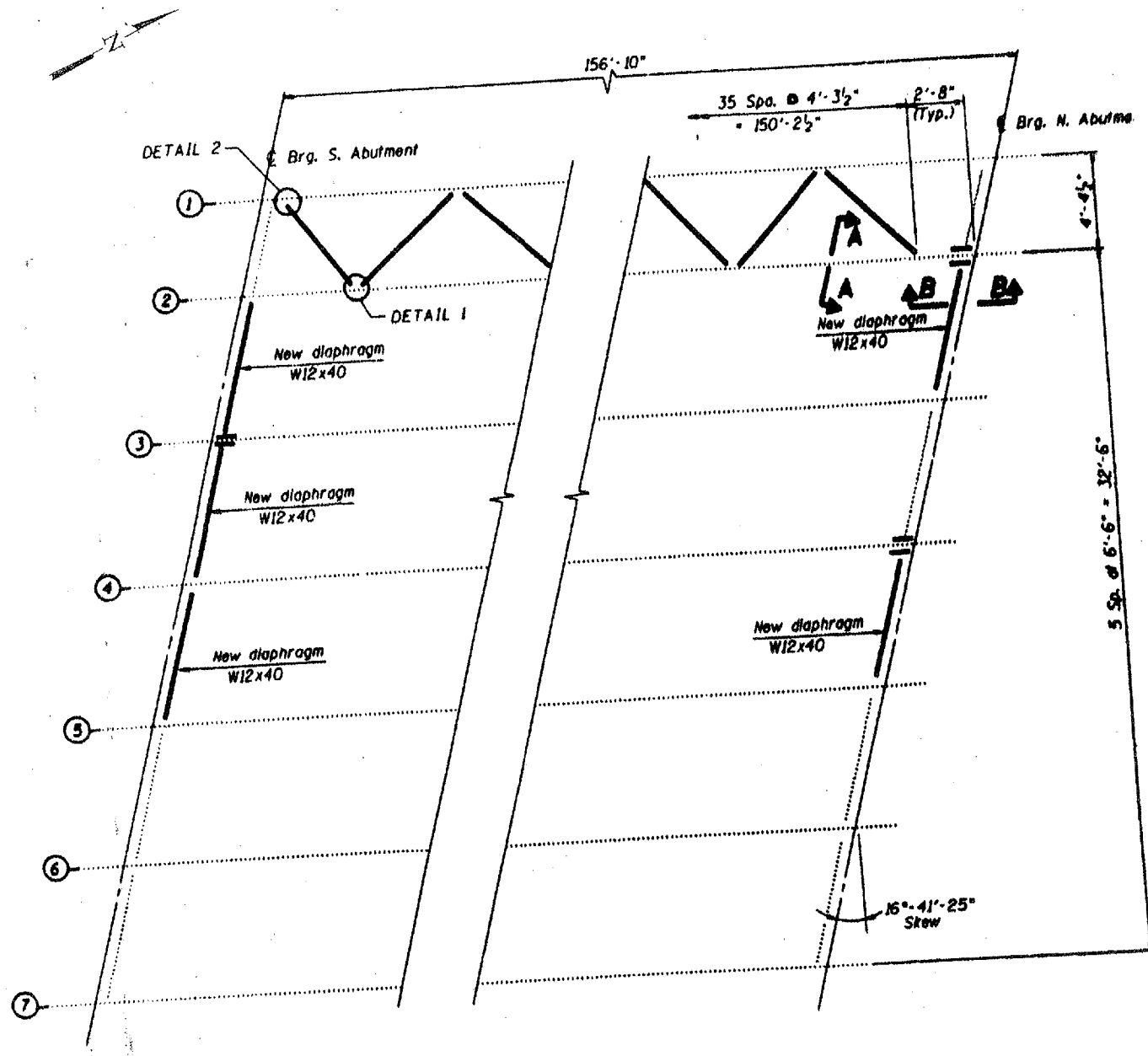
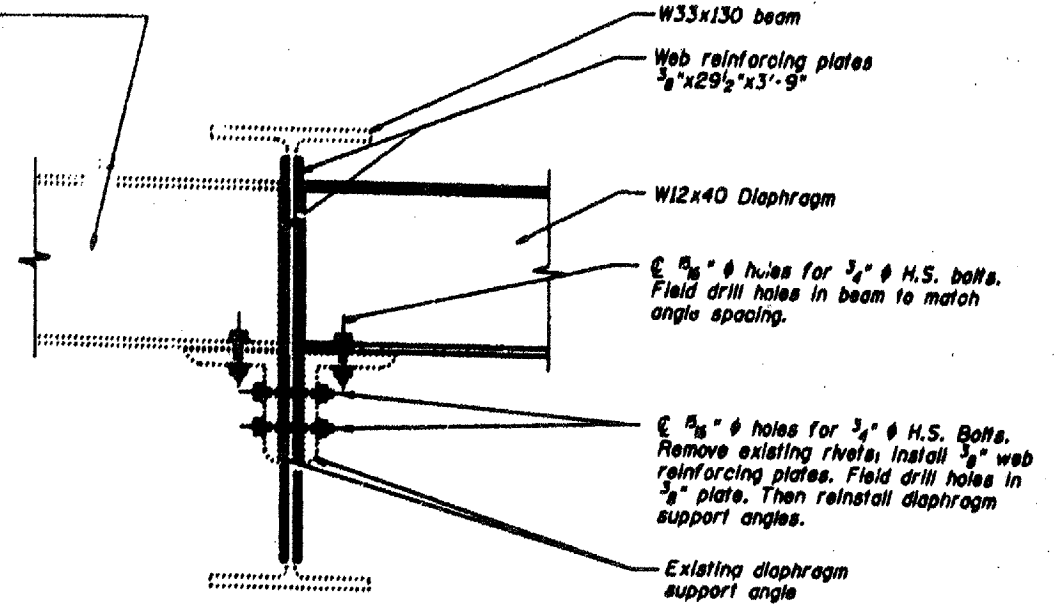


ROUTE	SECTION	COUNTY	TOTAL SHEETS	SHEET NUMBER
VARIOUS	2007-041 BP	VARIOUS	25	12

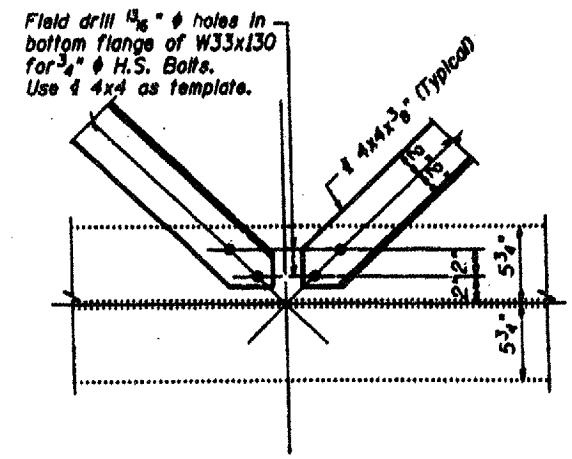
CONTRACT NO. 60D31



Existing W12x40 diaphragm. Remove as required to install new web reinforcing plates. Cut 1/2" from diaphragm end. Redrill 5/8" holes in bottom flange. Reinstall using 3/4" H.S. Bolts and oversize rectangular 1 1/2"x2" washers to completely cover holes in flange.



**SECTION A-A**



**DETAIL 1**  
Detail 2 Similar

**LOCATION NO.2**  
**EXIST. BRIDGE PLANS**  
**I-55 NB & SB**  
**SN: 099-0018, -0019**