

ROUTE	SECTION	COUNTY	TOTAL SHEETS	SHEET NUMBER
VARIOUS	2007-041 BP	Will, Kane, McHenry	24 25	1

FOR INDEX OF SHEETS SEE SHEET 2

CONTRACT NO. 60D31

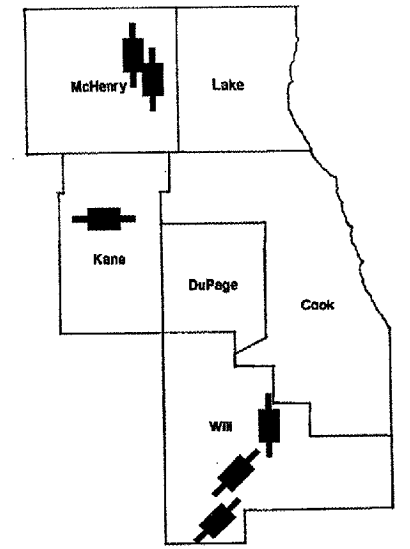
STATE OF ILLINOIS
DEPARTMENT OF TRANSPORTATION
DIVISION OF HIGHWAYS
DISTRICT ONE
PROPOSED HIGHWAY PLANS

D-91-002-08

IMPROVEMENT ARE LOCATED
IN THE CITIES OF JOLIET
AND ELGIN AND IN
PLAINFIELD, RICHMOND AND
MCHENRY TOWNSHIPS

VARIOUS ROUTES
 VARIOUS LOCATIONS
 SECTION 2007-041 BP
 BRIDGE PAINTING

WILL, KANE & MCHENRY COUNTIES
 C-91-002-08



LOCATION OF IMPROVEMENT INDICATED THUS:

- LOCATION 1) SN 099-0016, -0017
- LOCATION 2) SN 099-0018, -0019
- LOCATION 3) SN 099-0022, -0023
- LOCATION 4) SN 045-0004
- LOCATION 5) SN 056-0037
- LOCATION 6) SN 056-0057

STATE OF ILLINOIS
DEPARTMENT OF TRANSPORTATION
DIVISION OF HIGHWAYS
 SUBMITTED: JANUARY 30, 20 08
Diane M. O'Keefe
 DEPUTY DIRECTOR OF HIGHWAYS, REGION ENGINEER
February 1, 2008
Eric E. Harm
 INTERIM ENGINEER OF DESIGN AND ENVIRONMENT
February 1, 20 08
Christine M. Reed
 DIRECTOR OF HIGHWAYS, CHIEF ENGINEER

PRINTED BY THE AUTHORITY
OF THE STATE OF ILLINOIS

J.U.L.I.E.: JOINT UTILITY LOCATION
 INFORMATION FOR EXCAVATION
 (800) 892-0123

DISTRICT ONE BUREAU OF DESIGN
 DESIGN ENGINEER: K. ENG/R. BORO (847) 705-4178

CONTRACT NO. 60D31

ROUTE	SECTION	COUNTY	TOTAL SHEETS	SHEET NUMBER
VARIOUS	2007-041 BP	VARIOUS	25	2

Contract 60D31

INDEX OF SHEETS

- 1 TITLE SHEET
- 2 INDEX OF SHEETS, STATE STANDARDS AND GENERAL NOTES
- 3 GENERAL PAINT NOTES
- 4-6 LOCATION MAPS
- 7 SUMMARY OF QUANTITIES
- 8-9 EXISTING BRIDGE PLANS (SN 099-0016, -0017: LOCATION 1)
- 10-12 EXISTING BRIDGE PLANS (SN 099-0018, -0019: LOCATION 2)
- 13-14 EXISTING BRIDGE PLANS (SN 099-0022, -0023: LOCATION 3)
- 15-18 EXISTING BRIDGE PLANS (SN 045-0004: LOCATION 4)
- 19-20 EXISTING BRIDGE PLANS (SN 056-0037: LOCATION 5)
- 21-22 EXISTING BRIDGE PLANS (SN 056-0057: LOCATION 6)
- 23 TRAFFIC CONTROL AND PROTECTION FOR SIDE ROADS, INTERSECTIONS AND DRIVEWAYS
- 24 TRAFFIC CONTROL AND PROTECTION AND TURN BAYS (TO REMAIN OPEN TO TRAFFIC)
- 25 TRAFFIC CONTROL DETAILS FOR FREEWAY SHOULDER CLOSURES PARTIAL RAMP CLOSURES

STATE STANDARDS

- 701006-02 2L, 2W, OFF-ROAD OPERATIONS, 15' TO 24" FROM PAVEMENT EDGE
- 701101-01 MULTI-LANE OFF-ROAD OPERATIONS
- 701301-02 LANE CLOSURE 2L, 2W SHORT TIME OPERATIONS
- 701601-05 URBAN LANE CLOSURE, MULTILANE, 1W OR 2W WITH NONTRAVERSABLE MEDIAN
- 701606-05 URBAN LANE CLOSURE, MULTILANE, 2W WITH MOUNTABLE MEDIAN
- 701901 TRAFFIC CONTROL DEVICES

GENERAL NOTES

IT SHALL BE THE CONTRACTOR'S RESPONSIBILITY TO VERIFY ALL DIMENSIONS & CONDITIONS EXISTING IN THE FIELD PRIOR TO CONSTRUCTION & ORDERING OF MATERIALS.

THE CONTRACTOR WILL NOT BE ALLOWED TO SET UP A YARD OR FIELD OFFICE ON STATE PROPERTY WITHOUT WRITTEN PERMISSION FROM THE DEPARTMENT.

THE CONTRACTOR SHALL CONTACT THE DISTRICT ONE TRAFFIC CONTROL SUPERVISOR AT (847) 705-4470 (FOR ARTERIALS) OR (847)705-4151 (FOR EXPRESSWAYS). A MINIMUM OF 72 HOURS IN ADVANCE OF BEGINNING WORK.

THE CONTRACTOR SHALL BE REQUIRED TO PROVIDE ACCESS TO ABUTTING PROPERTY AT ALL TIMES DURING THE CONSTRUCTION OF THIS PROJECT.

DO NOT SCALE PLANS FOR CONSTRUCTION DIMENSIONS.

REMOVAL, STORAGE AND REINSTALLATION OF CHAIN-LINK FENCE AT LOCATION 3 (SN 099-0022, -0023), IF REQUIRED FOR ACCESS, IS INCLUDED IN THE COST OF "CLEAN AND PAINTING STEEL BRIDGE NO'S 5 AND 6."

NO LANE CLOSURES SHALL BE ALLOWED ON I-55 AT LOCATIONS 1 (SN 099-0016, -0017), LOC 2 (SN 099-0018, -0019) AND LOCATION 3 (SN 099-0022, -0023). THE CONTRACTOR SHALL COORDINATE THEIR WORK WITH OTHER I-55 CONSTRUCTION CONTRACTS INCLUDING 62896.

NO LANE CLOSURES SHALL BE ALLOWED ON IL-31 AT LOCATION 5 (SN 056-0037).

THE "ADVANCE WARNING SIGN DETAIL FOR ARTERIAL TRAFFIC" LOCATED IN THE SPECIAL PROVISIONS FOR "TEMPORARY INFORMATION SIGNING FOR LANE CLOSURES" IS APPLICABLE ONLY TO ARTERIAL ROADS AND SHALL NOT BE APPLIED TO EXPRESSWAYS.

ILLINOIS DEPARTMENT OF TRANSPORTATION

**INDEX OF SHEETS
STATE STANDARDS
GENERAL NOTES**

ROUTE	SECTION	COUNTY	TOTAL SHEETS	SHEET NUMBER
VARIOUS	2007-041 BP	VARIOUS	25	3

Contract 60D31

GENERAL NOTES FOR PAINT

CLEANING AND PAINTING OF THE EXISTING STRUCTURAL STEEL SHALL BE AS SPECIFIED IN THE SPECIAL PROVISION FOR "CLEANING AND PAINTING EXISTING STEEL STRUCTURES".

A MINIMUM OF FOUR (4) AIR MONITORS WILL BE REQUIRED TO MONITOR ABRASIVE BLASTING OPERATIONS PER LOCATION. FOR LOCATIONS 1 (SN'S 099-0016,-0017), 2 (SN'S 099-0018,-0019), 3 (SN'S 099-0022,-0023) AND 4 (SN 045-0004) SEE SPECIAL PROVISION FOR CONTAINMENT AND DISPOSAL OF LEAD PAINT CLEANING RESIDUE. LOCATIONS 5 (SN 056-0037) AND 6 (SN 056-0057) DO NOT CONTAIN LEAD. FOR LOCATIONS 5 & 6 SEE SPECIAL PROVISION FOR CONTAINMENT AND DISPOSAL OF NON-LEAD PAINT CLEANING RESIDUE.

THE SSPC-QP1 AND SSPC-QP2 PAINTING CONTRACTOR CERTIFICATIONS WILL BE REQUIRED FOR THESE BRIDGES.

THE AREAS DESIGNATED TO BE CLEANED PER NEAR WHITE BLAST CLEANING SSPC-SP10 SHALL BE PAINTED ACCORDING TO THE REQUIREMENTS OF PAINT SYSTEM 1 - OZ/E/U. THE COLOR OF THE FINAL FINISH COAT FOR ALL INTERIOR STEEL SURFACES SHALL BE GRAY, MUNSELL NO 5B 7/1. THE COLOR OF THE FINAL FINISH COAT FOR THE EXTERIOR AND BOTTOM FLANGE OF THE FASCIA BEAMS SHALL BE REDDISH BROWN, MUNSELL NO 2.5YR 3/4.

ALL ITEMS (SUCH AS, BUT NOT LIMITED TO; CONDUITS, BRACKETS AND DECK DRAINS) ATTACHED TO THE OUTSIDE OF THE FASCIA BEAMS SHOULD BE CLEANED AND PAINTED.

LOCATIONS 1(SN'S 099-0016,-0017), 2(SN'S 099-0018, -0019) AND 3(SN'S 099-0022, -0023)

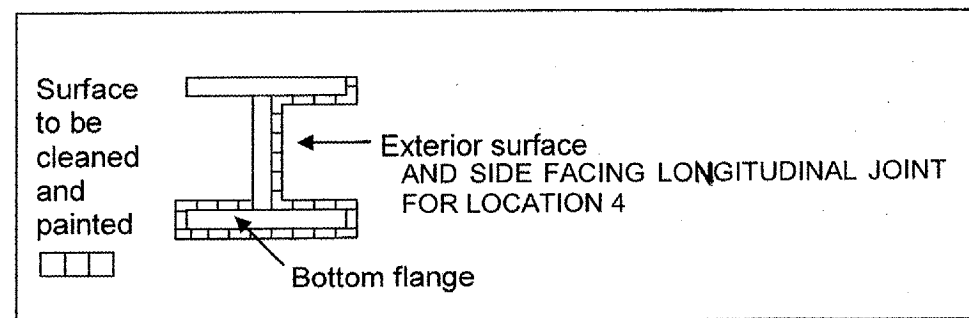
ALL ORIGINAL BEAMS, BEARINGS AND OTHER STRUCTURAL STEEL WITHIN FIVE (5) FT., (MEASURED ALONG THE BEAM) OF EITHER SIDE OF THE DECK JOINTS, SHALL BE CLEANED PER NEAR WHITE BLAST CLEANING SSPC-SP10. THE EXTERIOR SURFACES AND TOP AND BOTTOM OF THE BOTTOM FLANGE OF THE ORIGINAL FASCIA BEAMS (SEE FIGURE 1) SHALL BE CLEANED PER NEAR WHITE BLAST CLEANING SSPC-SP10. BEAMS, ETC. INSTALLED DURING THE 2007 WIDENING CONTRACT 60B86 SHALL NOT BE CLEANED.

LOCATION 4 [SN 045-0004]

ALL BEAMS, BEARINGS AND OTHER STRUCTURAL STEEL WITHIN FIVE FEET SIX INCHES (5'-6"), (MEASURED ALONG THE BEAM/GIRDER) OF EITHER SIDE OF THE DECK JOINTS, SHALL BE CLEANED PER NEAR WHITE BLAST CLEANING SSPC-SP10. THE EXTERIOR SURFACES AND TOP AND BOTTOM OF THE BOTTOM FLANGE OF THE FASCIA BEAMS AND BEAMS 1 AND 5 EITHER SIDE OF LONGITUDINAL JOINT (INSIDE FACE AS EXTERIOR SURFACE) (SEE FIGURE 1) SHALL BE CLEANED PER NEAR WHITE BLAST CLEANING SSPC-SP10.

LOCATIONS 5 ([SN 056-0037) AND 6 (SN 056-0057)

ALL BEAMS, BEARINGS AND OTHER STRUCTURAL STEEL WITHIN FIVE (5) FT., (MEASURED ALONG THE BEAM) OF EITHER SIDE OF THE DECK JOINTS, SHALL BE CLEANED PER NEAR WHITE BLAST CLEANING SSPC-SP10. THE EXTERIOR SURFACES AND TOP AND BOTTOM OF THE BOTTOM FLANGE OF THE FASCIA BEAMS (SEE FIGURE 1) SHALL BE CLEANED PER NEAR WHITE BLAST CLEANING SSPC-SP10.



FASCIA BEAM PAINTING DETAIL

FIGURE 1

*	SN	FACIA LOCATION
LOC 1	099-0016	EAST ONLY
	099-0017	WEST ONLY
LOC 2	099-0018	EAST ONLY
	099-0019	NO FACIAS
LOC 3	099-0022	EAST ONLY
	099-0023	WEST ONLY

ORIGINAL FACIA LOCATIONS TO BE CLEANED

ILLINOIS DEPARTMENT OF TRANSPORTATION

GENERAL PAINT NOTES

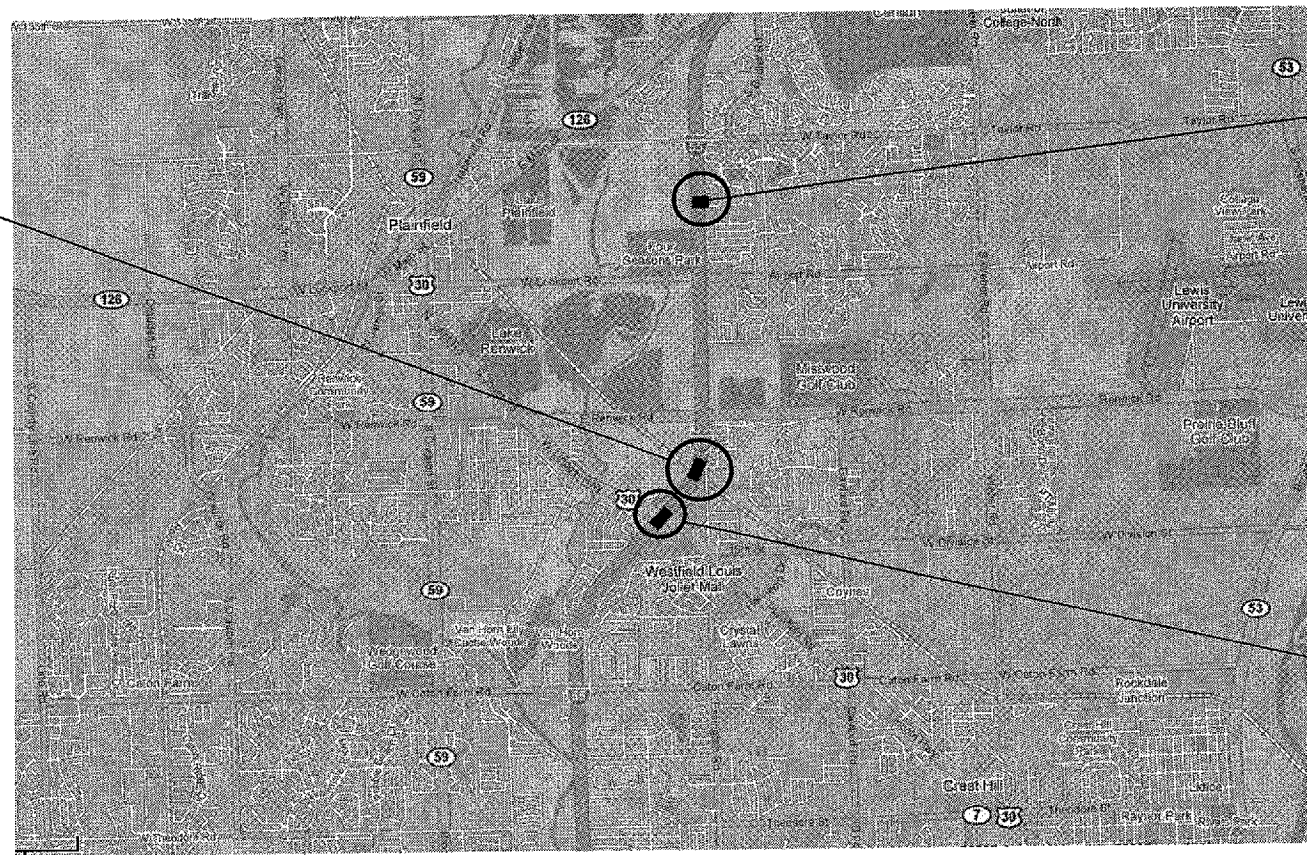
ROUTE	SECTION	COUNTY	TOTAL SHEETS	SHEET NUMBER
VARIOUS	2007-041 BP	VARIOUS	25	4

CONTRACT NO. 60D31

R 9 E

LOCATION 2:
 SN 099-0018, 0019
 I-55 OVER EJ&E RR
 PLAINFIELD TOWNSHIP

LOCATION 3:
 SN 099-0022, 0023
 I-55
 OVER ABANDONED MATERIAL SERVICE RR
 PLAINFIELD TOWNSHIP



LOCATION 1:
 SN 099-0016, 0017
 I-55
 OVER US 30
 CITY OF JOLIET

PLAINFIELD TOWNSHIP
 WILL COUNTY

TRAFFIC DATA: I-55

2005 ADT	= 46,500
SPEED LIMIT	= 55 MPH

TRAFFIC DATA: US-30

2005 ADT	= 26,100
SPEED LIMIT	= 45 MPH

ILLINOIS DEPARTMENT OF TRANSPORTATION

LOCATION OF IMPROVEMENT

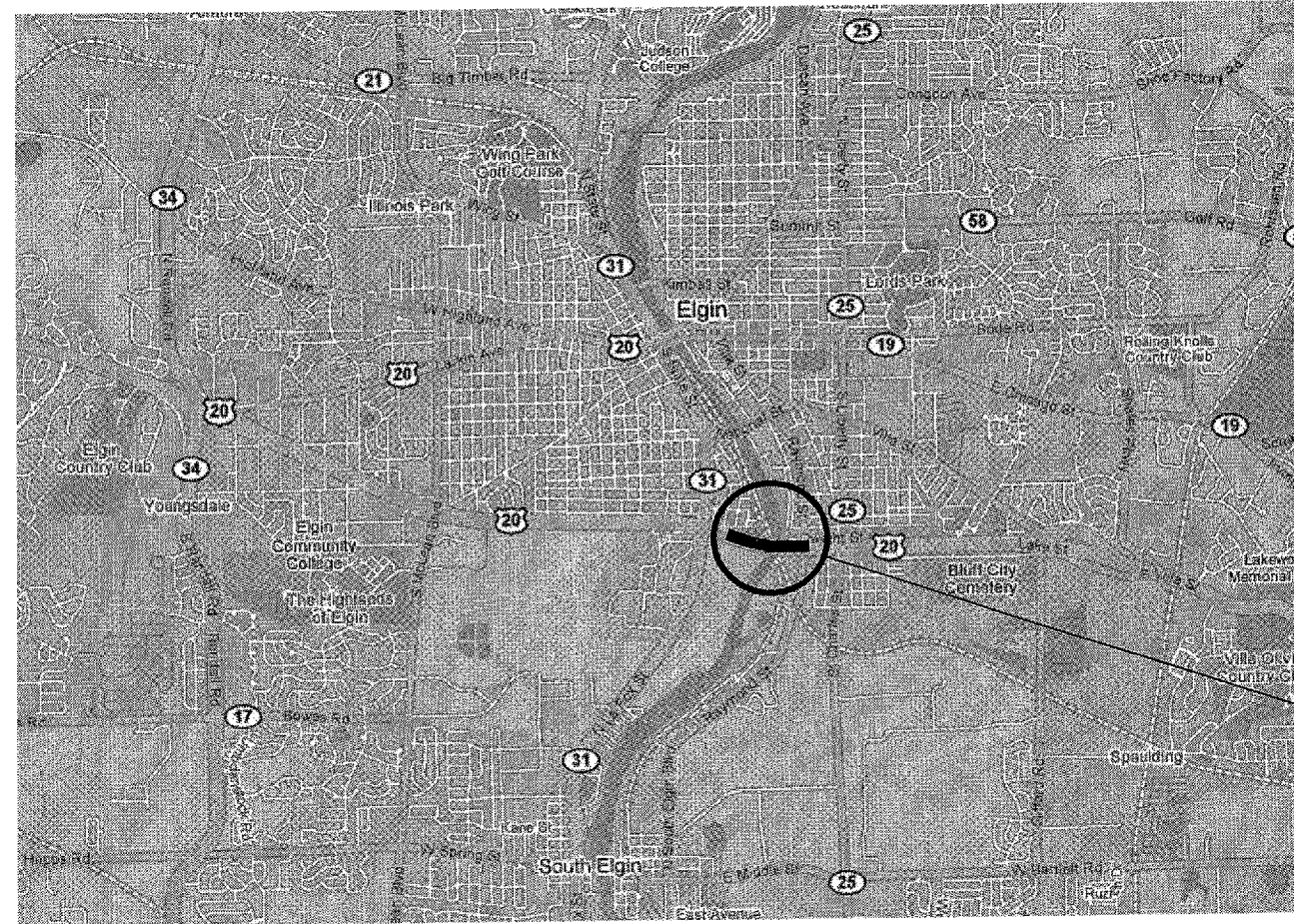
LOCATION 1: I-55 OVER US 30
 LOCATION 2: I-55 OVER EJ&ERR
 LOCATION 3: I-55 OVER MATERIAL SERVICE RR

ROUTE	SECTION	COUNTY	TOTAL SHEETS	SHEET NUMBER
VARIOUS	2007-041 BP	VARIOUS	25	5

CONTRACT NO.: 60D31

R 8 E

T 41 N



LOCATION 4:
SN 045-0004
 US 20 BY PASS
 OVER FOX RIVER, RR, BIKE PATH
 & HIGH POWER LINES
 CITY OF ELGIN

ELGIN TOWNSHIP
 KANE COUNTY

TRAFFIC DATA: US 20
 2005 ADT = 43,000
 SPEED LIMIT = 55 MPH

ILLINOIS DEPARTMENT OF TRANSPORTATION
 LOCATION OF IMPROVEMENT
 LOCATION 4: US 20 BY PASS
 OVER FOX RIVER, RR, BIKE PATH & HIGH POWER LINES

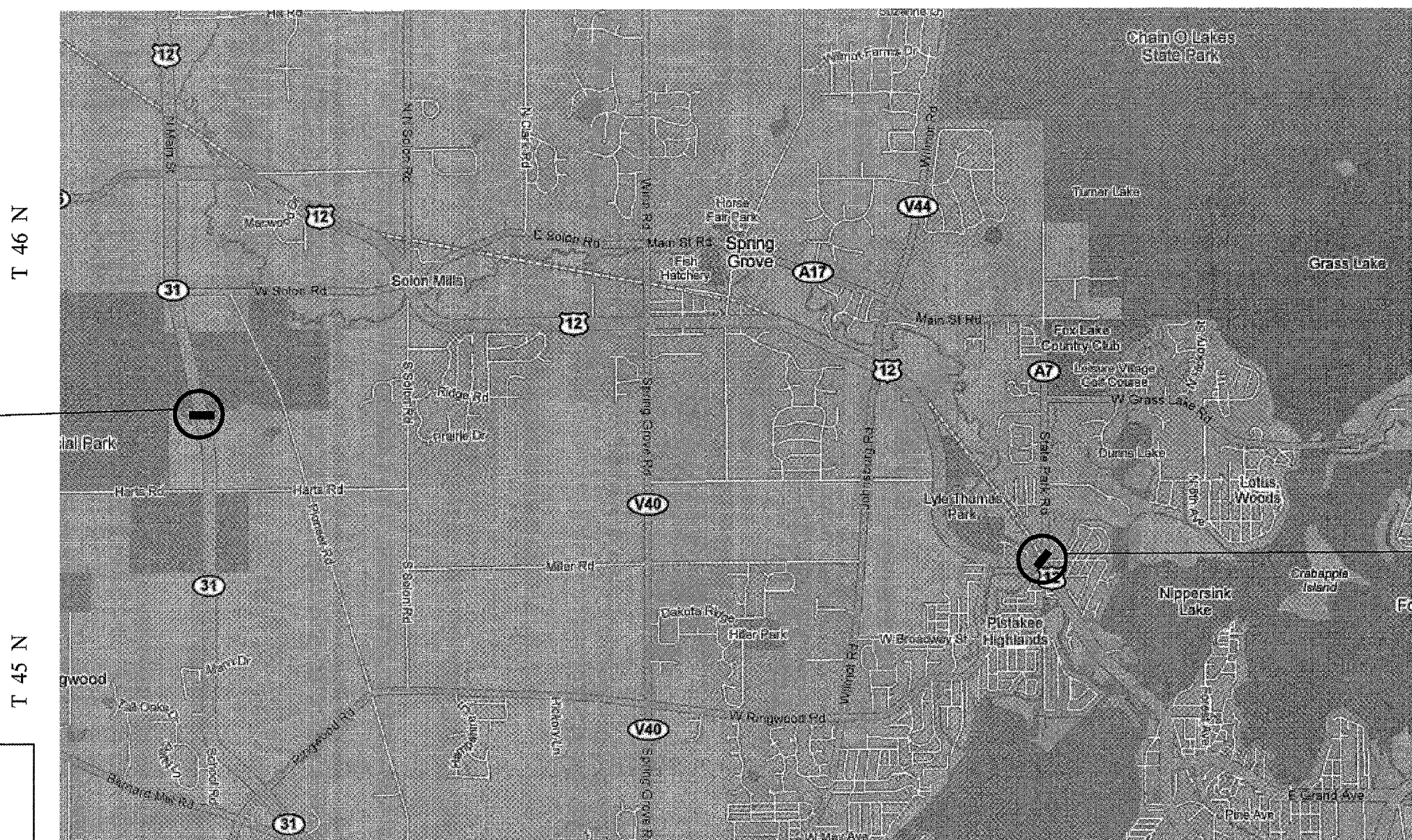
ROUTE	SECTION	COUNTY	TOTAL SHEETS	SHEET NUMBER
VARIOUS	2007-041 BP	VARIOUS	25	6

CONTRACT NO.: 60D31

R 8 E

MCHENRY CO. LAKE CO.

R 9 E



LOCATION 5:
SN 056-0037
 ILL 31
 OVER NIPPERSINK
 CREEK
 RICHMOND TOWNSHIP
 MCHENRY COUNTY

LOCATION 6:
SN 056-0057
 US 12
 OVER NIPPERSINK CREEK
 MCHENRY TOWNSHIP
 MCHENRY COUNTY

TRAFFIC DATA: IL 31
 2005 ADT = 7,700
 SPEED LIMIT = 45 MPH

TRAFFIC DATA: US 12
 2005 ADT = 19,600
 SPEED LIMIT = 45 MPH

RICHMOND & MCHENRY TOWNSHIPS

ILLINOIS DEPARTMENT OF TRANSPORTATION
 LOCATION OF IMPROVEMENT
 LOCATION 5: ILL 31
 LOCATION 6: US 12
 OVER NIPPERSINK CREEK

	ROUTE	SECTION	COUNTY	TOTAL SHEETS	SHEET NUMBER
	VARIOUS	2007-041 BP	Will, Kane, McHenry	24	7

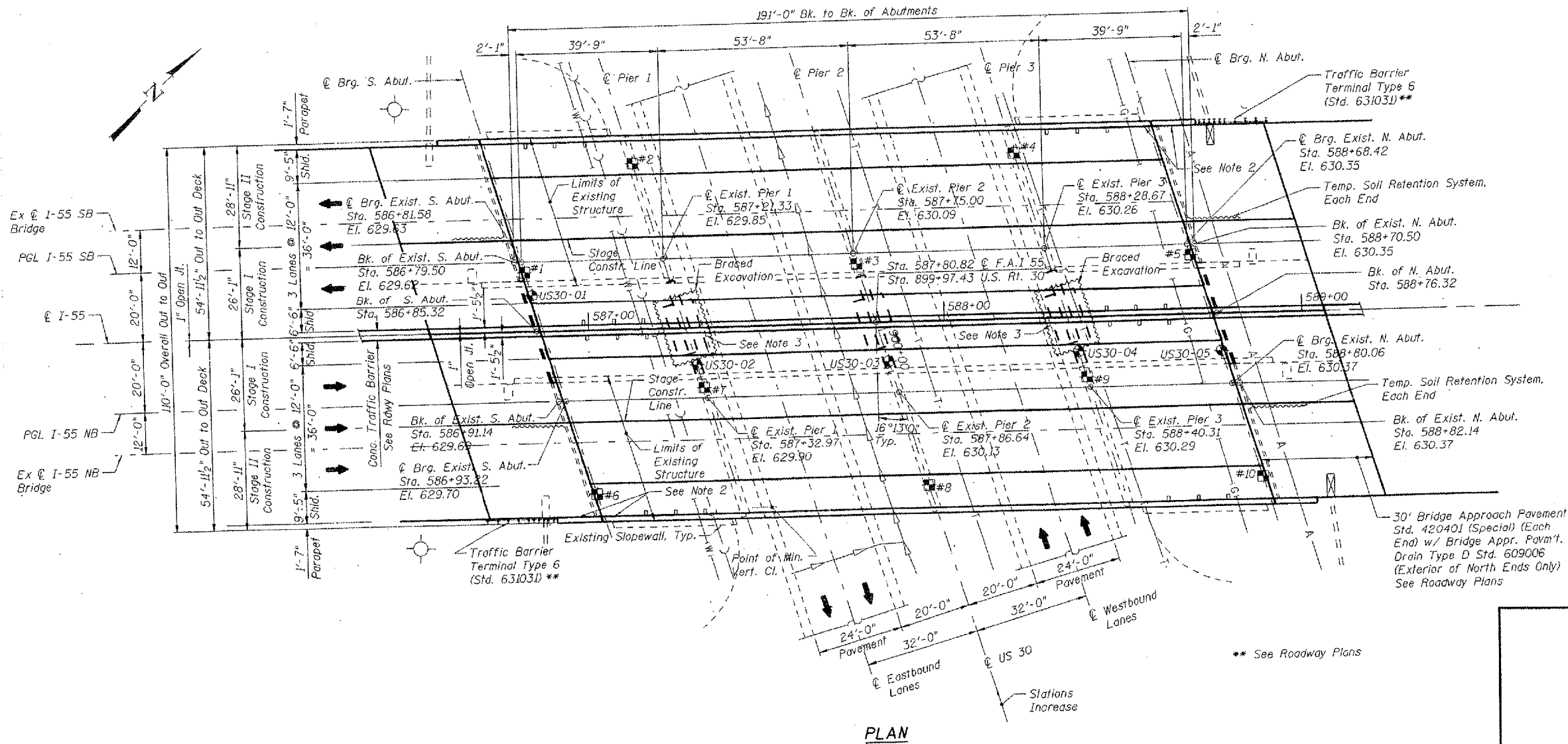
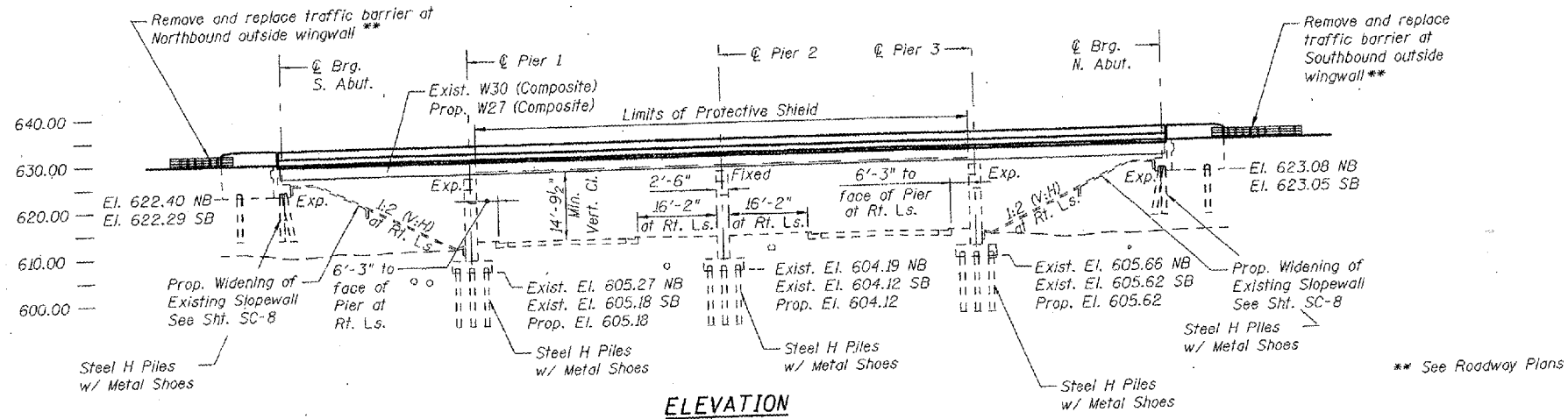
SUMMARY OF QUANTITIES

Code No	Description	Unit	Total Quantities	CONSTRUCTION TYPE CODE: SFTY - 2A								
				WILL COUNTY						KANE CO	MC HENRY CO	
				LOCATION 1		LOCATION 2		LOCATION 3		LOCATION 4	LOCATION 5	LOCATION 6
				099-0016	099-0017	099-0018	099-0019	099-0022	099-0023	045-0004	056-0037	056-0057
50606400	CONTAINMENT AND DISPOSAL OF LEAD PAINT CLEANING RESIDUES	L SUM	1	0.04	0.04	0.05	0.02	0.03	0.03	0.79		
50606600	CONTAINMENT AND DISPOSAL OF NON-LEAD PAINT CLEANING RESIDUES	LSUM	1								0.5	0.5
50600600	CLEANING AND PAINTING STEEL BRIDGE NO 1	L SUM	1	1								
50600700	CLEANING AND PAINTING STEEL BRIDGE NO 2	L SUM	1		1							
50600800	CLEANING AND PAINTING STEEL BRIDGE NO 3	L SUM	1			1						
50600900	CLEANING AND PAINTING STEEL BRIDGE NO 4	L SUM	1				1					
50601000	CLEANING AND PAINTING STEEL BRIDGE NO 5	L SUM	1					1				
50601100	CLEANING AND PAINTING STEEL BRIDGE NO 6	L SUM	1						1			
50601200	CLEANING AND PAINTING STEEL BRIDGE NO 7	L SUM	1							1		
50601300	CLEANING AND PAINTING STEEL BRIDGE NO 8	L SUM	1									1
50601400	CLEANING AND PAINTING STEEL BRIDGE NO 9	L SUM	1									1.9
67000400	ENGINEER'S FIELD OFFICE, TYPE A	CAL MO	18	0.9	0.9	0.9	0.9	0.9	0.9	8.8	1.9	
67100100	MOBILIZATION	L SUM	1	0.1	0.1	0.1	0.1	0.1	0.1	0.5		1
70102625	TRAFFIC CONTROL AND PROTECTION, STANDARD 701606	L SUM	1							0.5		
70102630	TRAFFIC CONTROL AND PROTECTION, STANDARD 701601	L SUM	1	0.25	0.25					48		48
X0322467	TEMPORARY INFORMATION SIGNING FOR LANE CLOSURE	SQ FT	192	24	24					48	48	
X7011015	TRAFFIC CONTROL AND PROTECTION (EXPRESSWAYS)	L SUM	1	0.16	0.16	0.17	0.17	0.17	0.17			
Z0048665	RAILROAD PROTECTIVE LIABILITY INSURANCE	L SUM	1			0.25	0.25			0.5		

ILLINOIS DEPARTMENT OF TRANSPORTATION
SUMMARY OF QUANTITIES

ROUTE	SECTION	COUNTY	TOTAL SHEETS	SHEET NUMBER
VARIOUS	2007-041 BP	VARIOUS	25	8

CONTRACT NO. 60D31



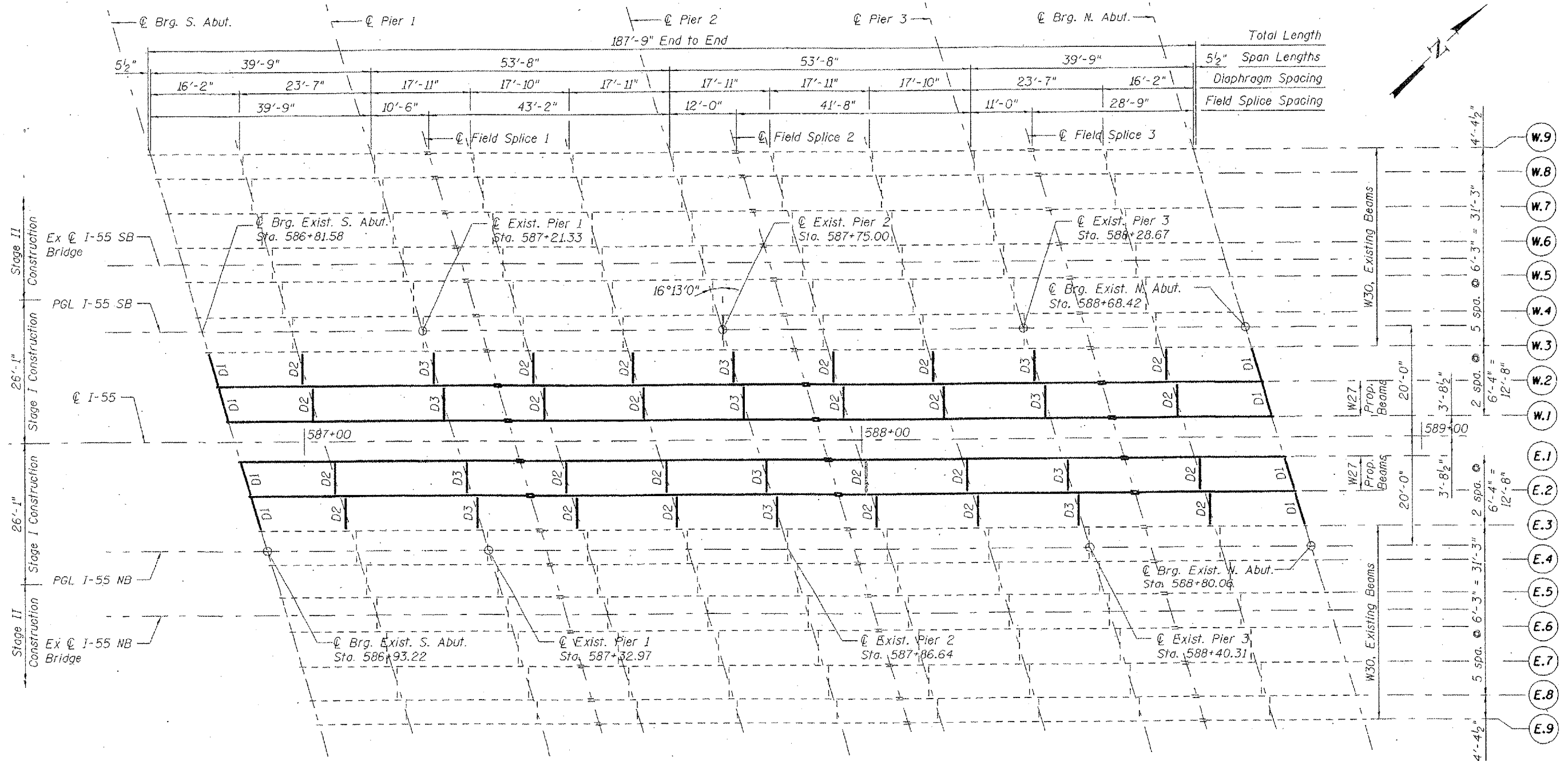
SHOWING
CONTRACT 60B86

FOR
INFORMATION
ONLY

LOCATION NO.1
EXIST. BRIDGE PLANS
I-55 NB & SB OVER US 30
SN: 099-0016, -0017

ROUTE VARIOUS	SECTION 2007-041 BP	COUNTY VARIOUS	TOTAL SHEETS 25	SHEET NUMBER 9
-------------------------	-------------------------------	--------------------------	---------------------------	--------------------------

CONTRACT NO. 60D31



FRAMING PLAN

END DIAPHRAGMS
 PROPOSED W12X40
 D1, EXISTING W12X40

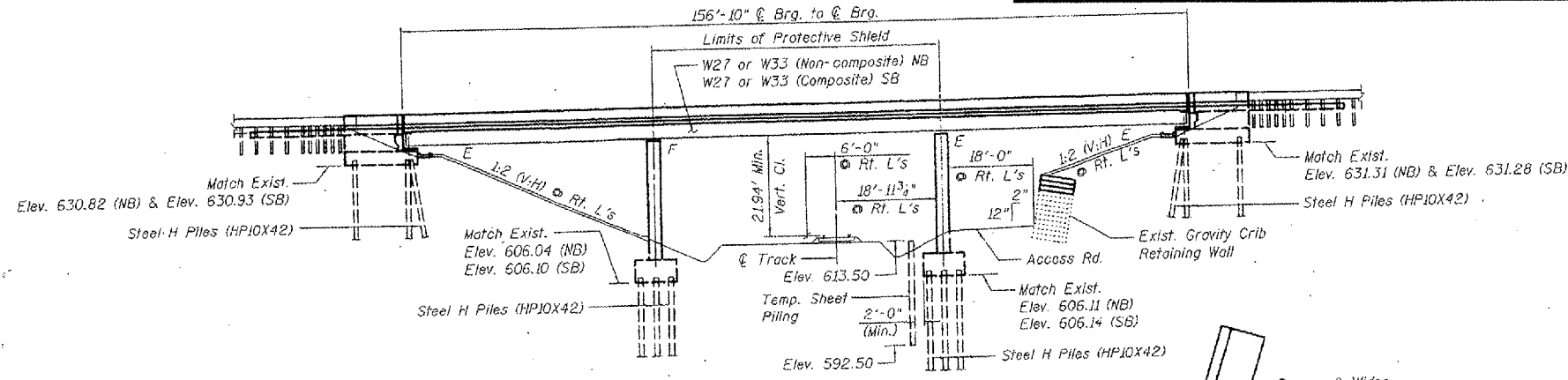
BEAMS
 PROPOSED W27X129
 EXISTING W30X108

SHEET 2 OF 2

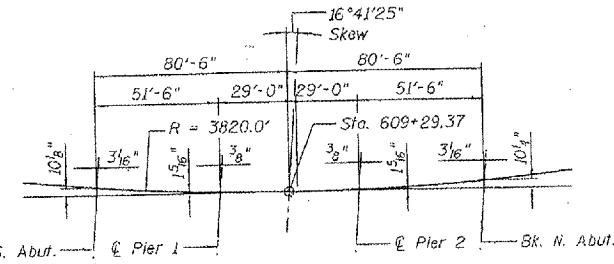
LOCATION NO.1
EXIST. BRIDGE PLANS
I-55 NB & SB OVER US 30
SN: 099-0016, -0017

ROUTE	SECTION	COUNTY	TOTAL SHEETS	SHEET NUMBER
VARIOUS	2007-041 BP	VARIOUS	25	10

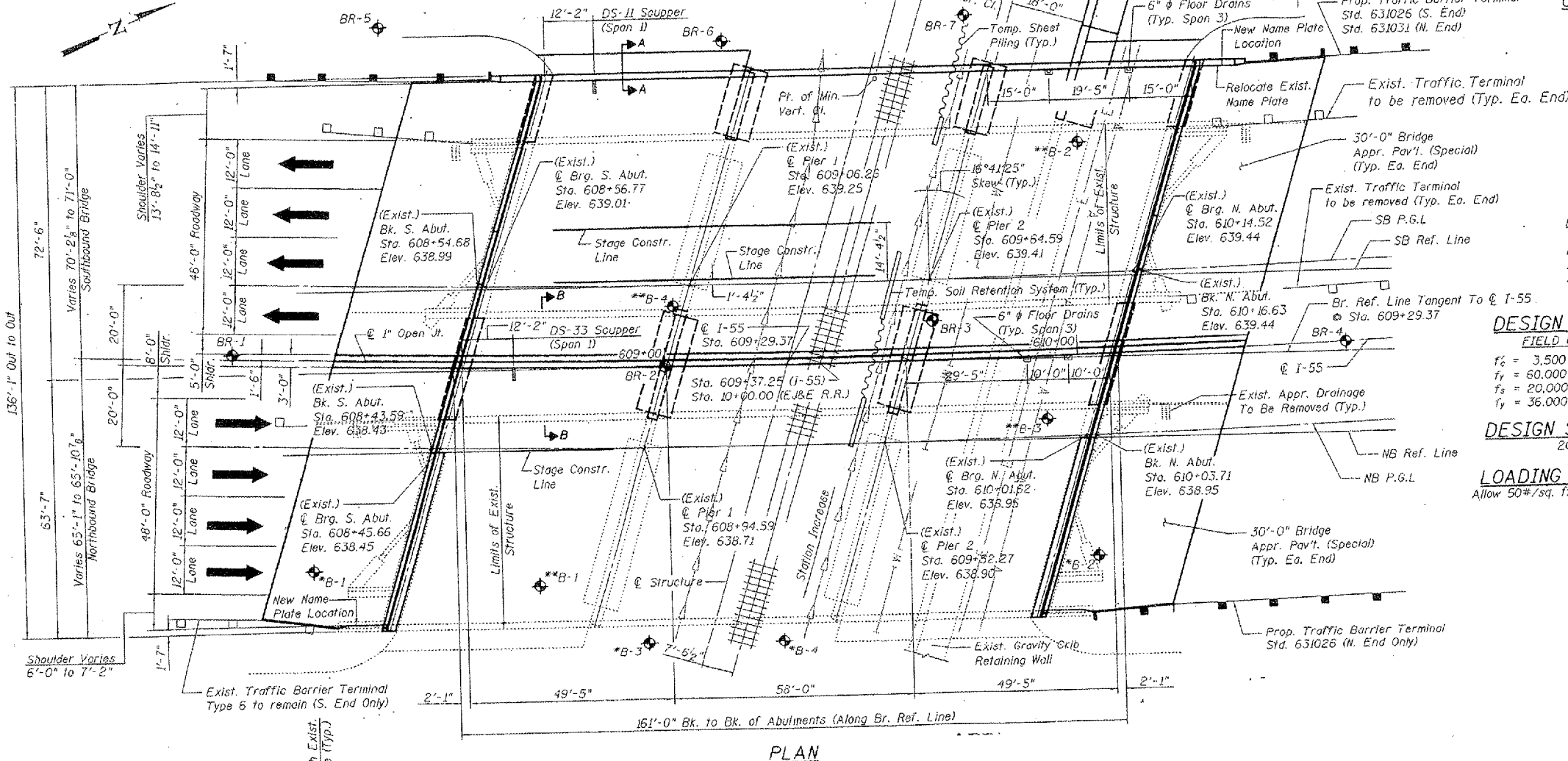
CONTRACT NO. 60D31



ELEVATION VIEW
(Looking West)



OFFSET SKETCH



PLAN

Note:
Mile post 7 is approximately 30' west of station 10+00.00 along E&E Railroad.

DESIGN STRESSES
FIELD UNITS

- $f'_c = 3,500$ psi
- $f_y = 60,000$ psi (reinforcement)
- $f_s = 20,000$ psi (exist. structural steel)
- $f_y = 36,000$ psi (new structural steel)

DESIGN SPECIFICATIONS
2002 AASHTO

LOADING HS20-44 & ALT.
Allow 50#/sq. ft. for future wearing surface.

TOP OF RAIL ELEVATIONS
EJ&E RAILROAD

Sta. 8+22.50	Elev. 613.03
Sta. 10+00.00	Elev. 613.21
Sta. 11+43.25	Elev. 613.33

SHOWING
CONTRACT 60B86

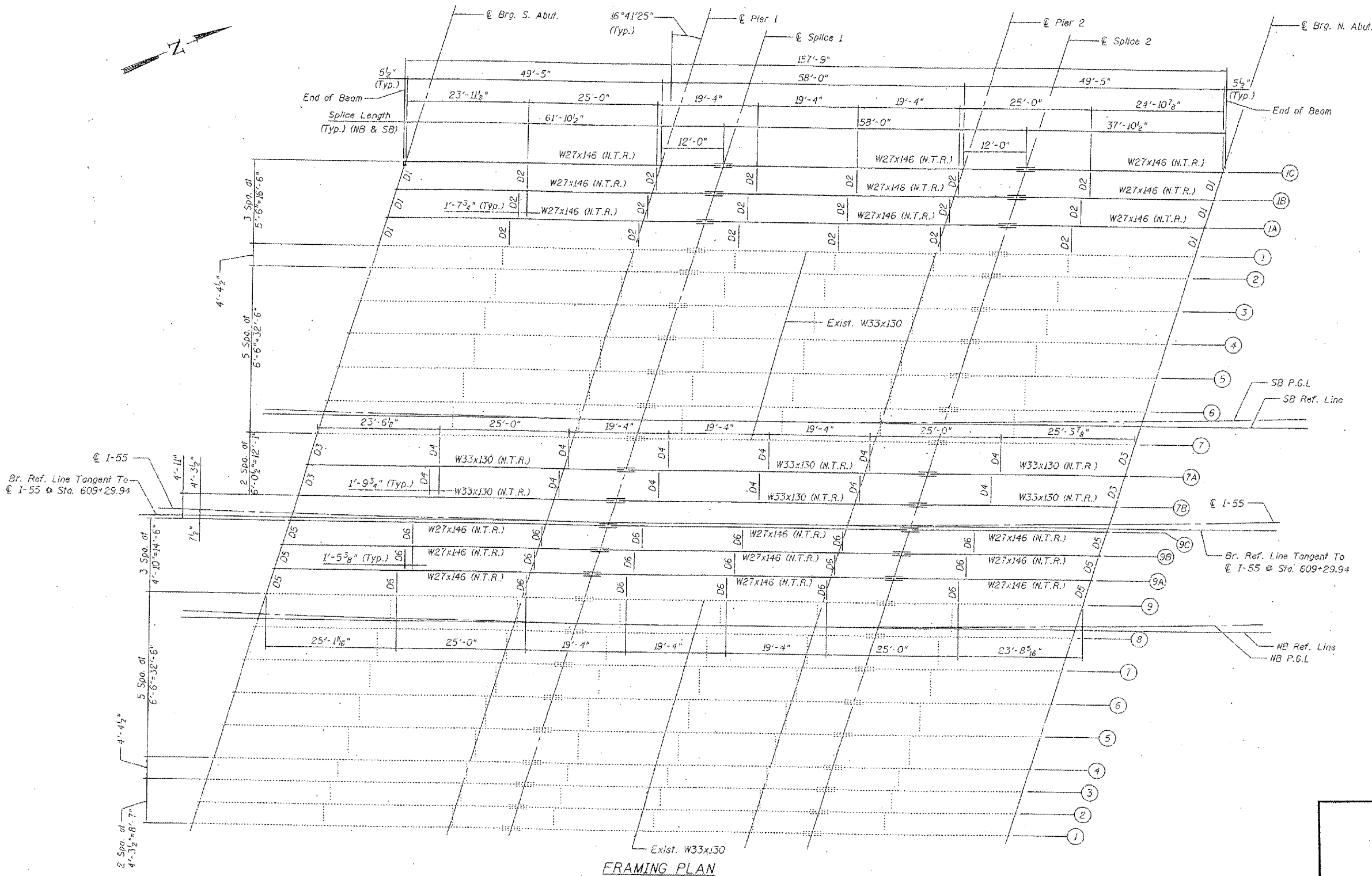
FOR
INFORMATION
ONLY

LOCATION NO.2

EXIST. BRIDGE PLANS
I-55 NB & SB
SN: 099-0018, -0019

ROUTE VARIOUS	SECTION 2007-041 BP	COUNTY VARIOUS	TOTAL SHEETS 25	SHEET NUMBER 11
------------------	------------------------	-------------------	-----------------------	-----------------------

CONTRACT NO. 60D31



FRAMING PLAN

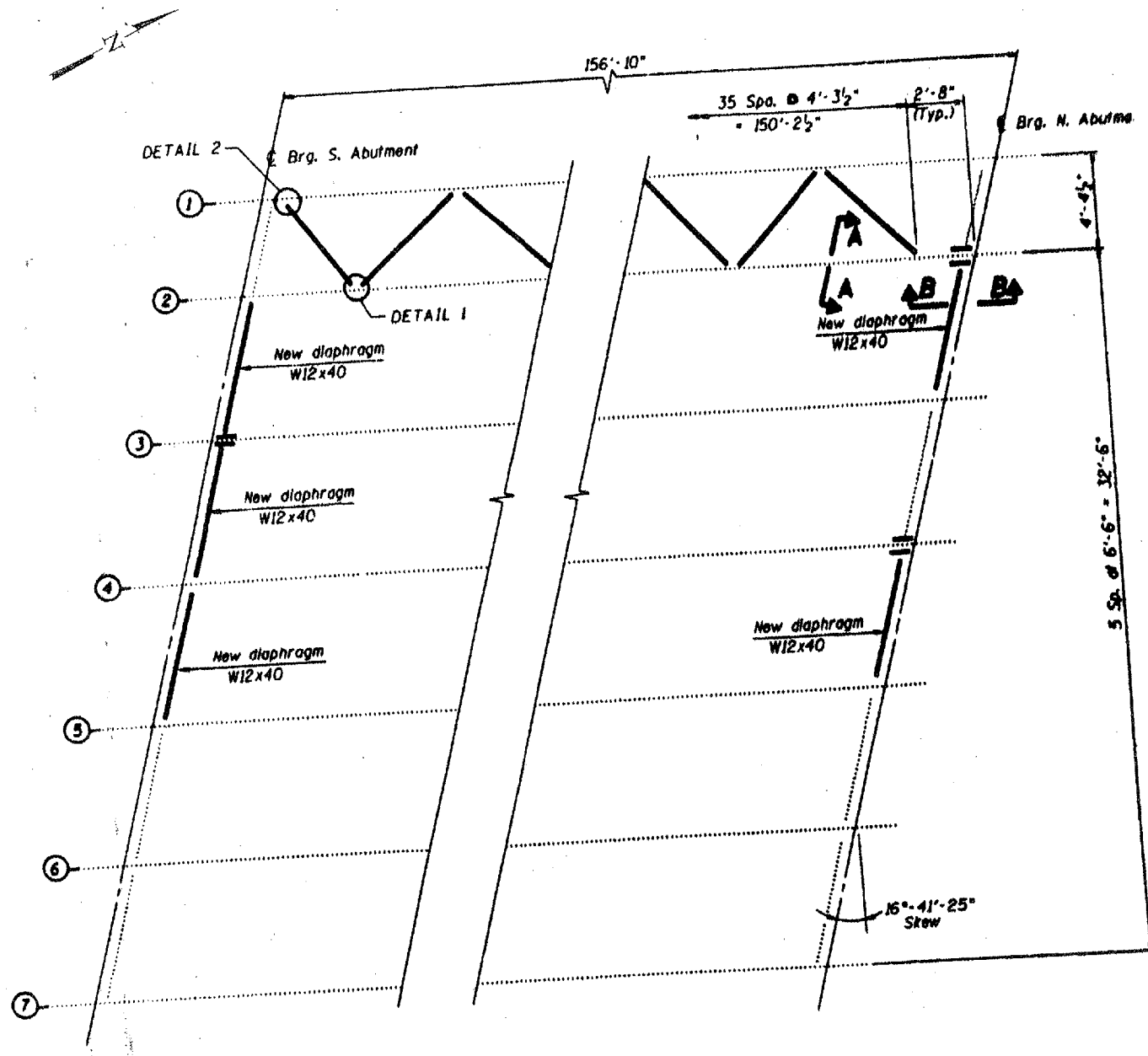
FOR EXISTING DIAPHRAGM DETAILS SEE SHEET 3 OF 3

LOCATION NO.2

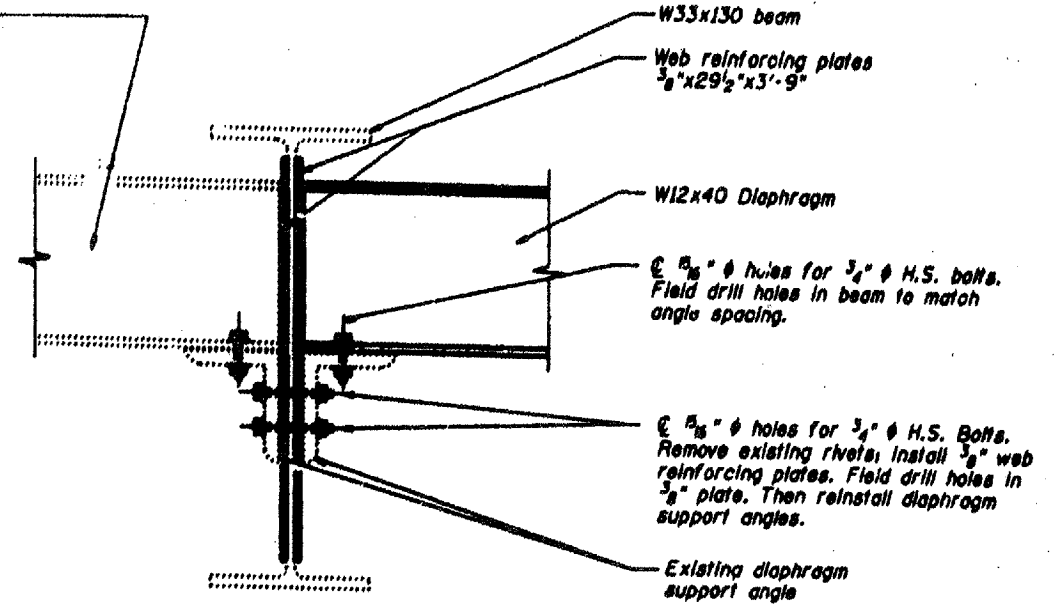
EXIST. BRIDGE PLANS
I-55 NB & SB
SN: 099-0018, -0019

ROUTE	SECTION	COUNTY	TOTAL SHEETS	SHEET NUMBER
VARIOUS	2007-041 BP	VARIOUS	25	12

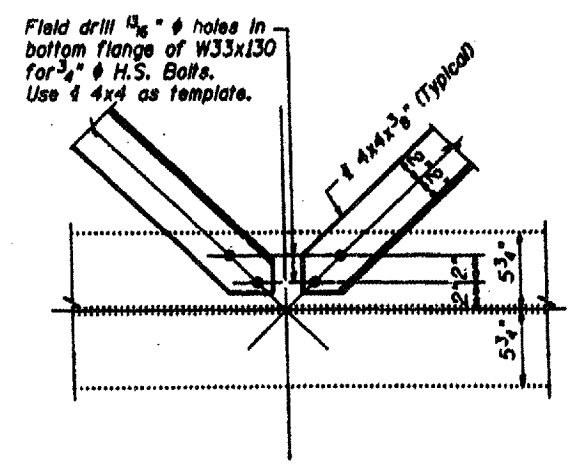
CONTRACT NO. 60D31



Existing W12x40 diaphragm. Remove as required to install new web reinforcing plates. Cut 1/2" from diaphragm end. Redrill 5/8" holes in bottom flange. Reinstall using 3/4" H.S. Bolts and oversize rectangular 1/2"x2" washers to completely cover holes in flange.



SECTION A-A

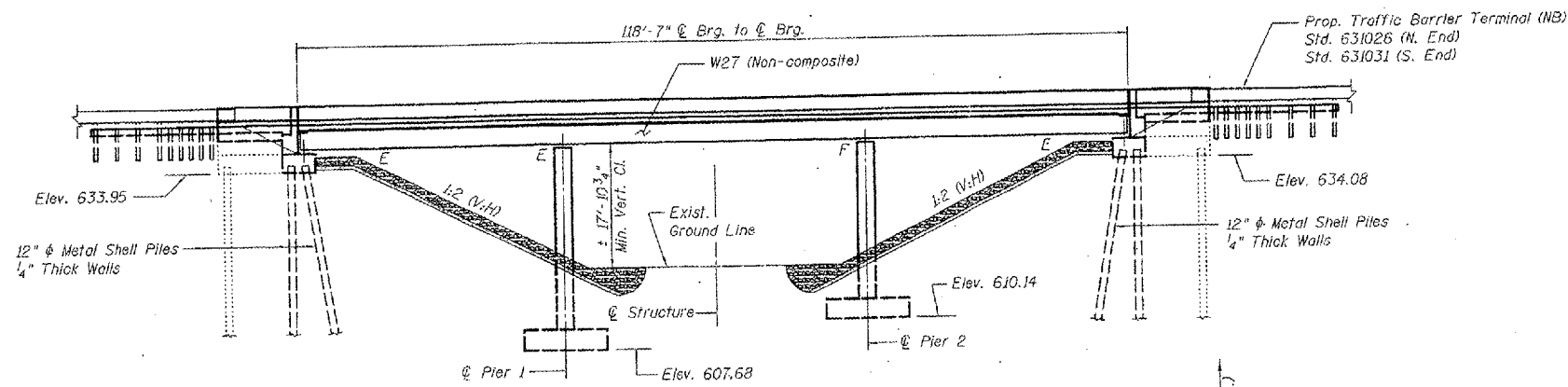


DETAIL 1
Detail 2 Similar

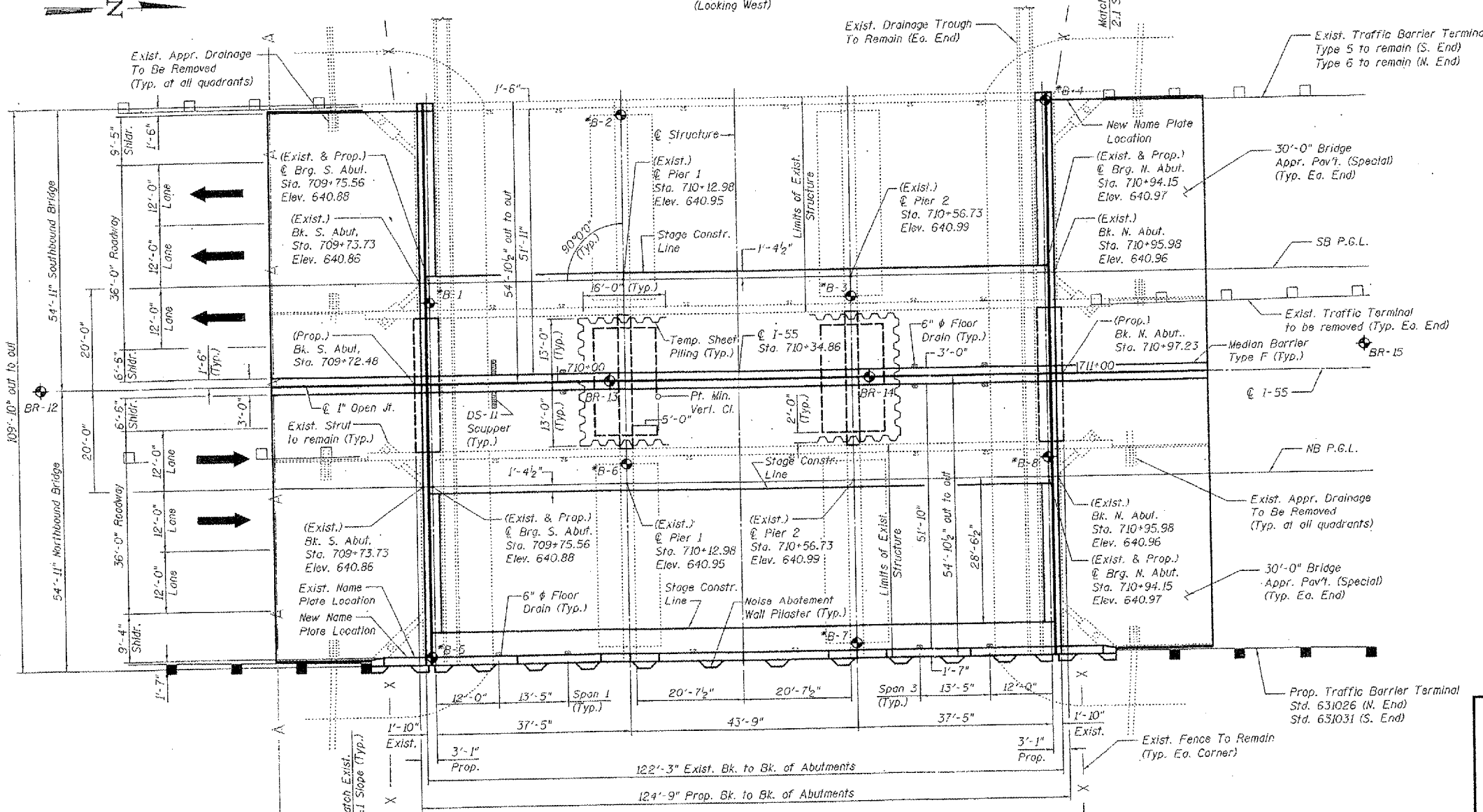
LOCATION NO.2
EXIST. BRIDGE PLANS
I-55 NB & SB
SN: 099-0018, -0019

ROUTE	SECTION	COUNTY	TOTAL SHEETS	SHEET NUMBER
VARIOUS	2007-041 BP	VARIOUS	25	13

CONTRACT NO. 60D31



ELEVATION
(Looking West)



PLAN

SHOWING
CONTRACT 60B86

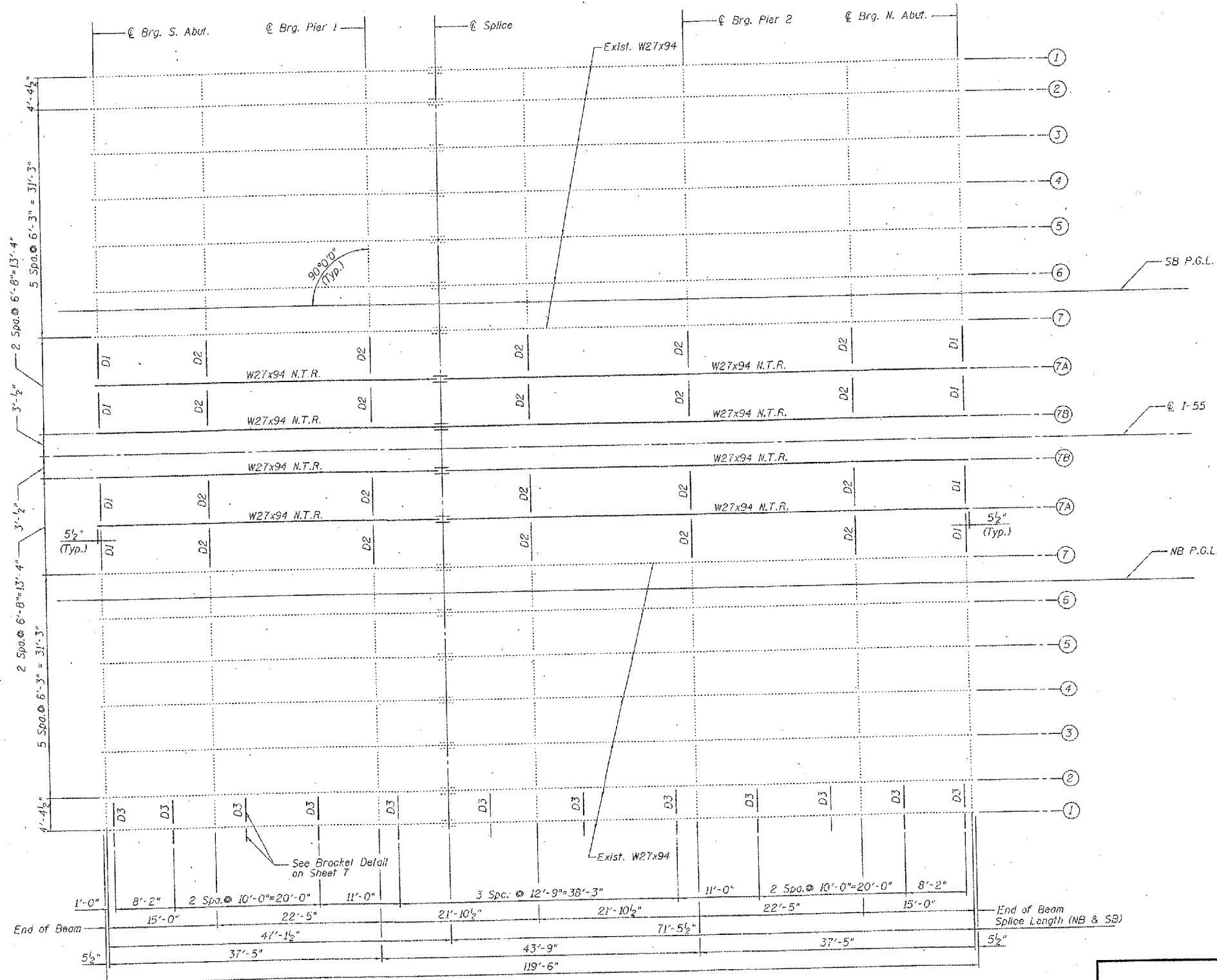
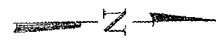
FOR
INFORMATION
ONLY

LOCATION NO.3

**EXIST. BRIDGE PLANS
I-55 OVER MS ABANDONED RR
SN: 099-0022, -0023**

ROUTE VARIOUS	SECTION 2007-041 BP	COUNTY VARIOUS	TOTAL SHEETS 25	SHEET NUMBER 14
------------------	------------------------	-------------------	-----------------------	-----------------------

CONTRACT NO. 60D31



FRAMING PLAN

END DIAPHRAGMS

PROPOSED W12X40

D1.

EXISTING W12X40

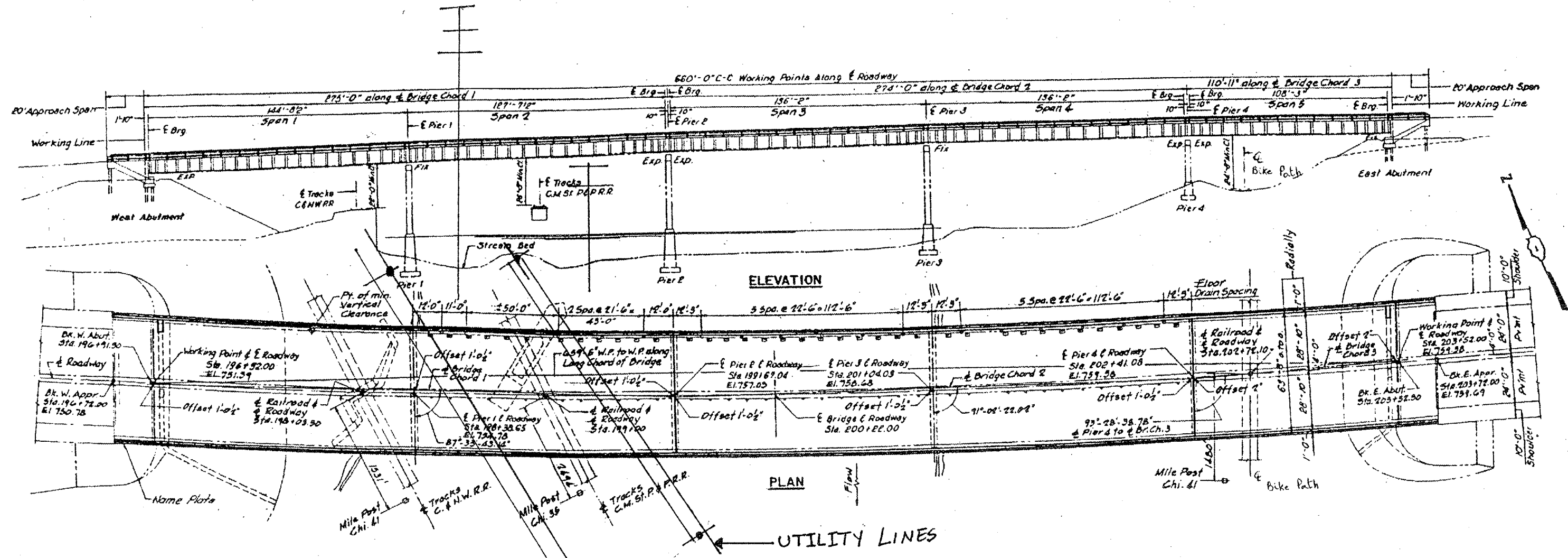
SHEET 2 OF 2

LOCATION NO.3

**EXIST. BRIDGE PLANS
I-55 OVER MS ABANDONED RR
SN: 099-0022, -0023**

ROUTE VARIOUS	SECTION 2007-041 BP	COUNTY VARIOUS	TOTAL SHEETS 25	SHEET NUMBER 15
------------------	------------------------	-------------------	--------------------	--------------------

CONTRACT NO. 60D31



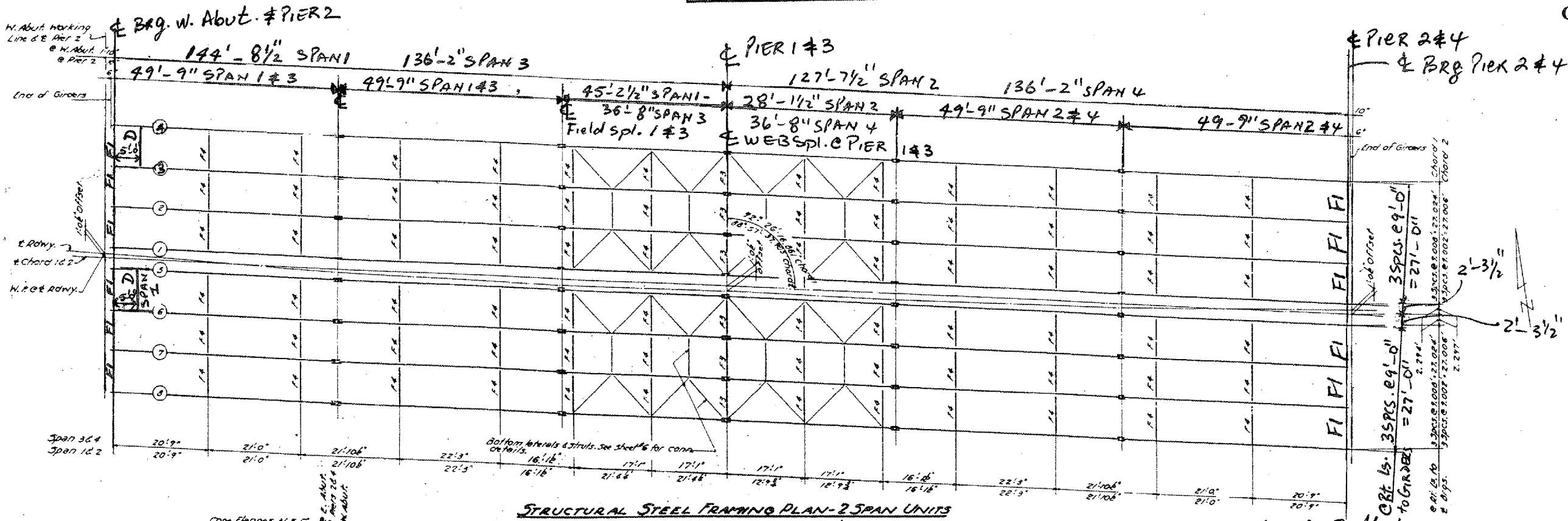
High Power Lines

FOR INFORMATION ONLY

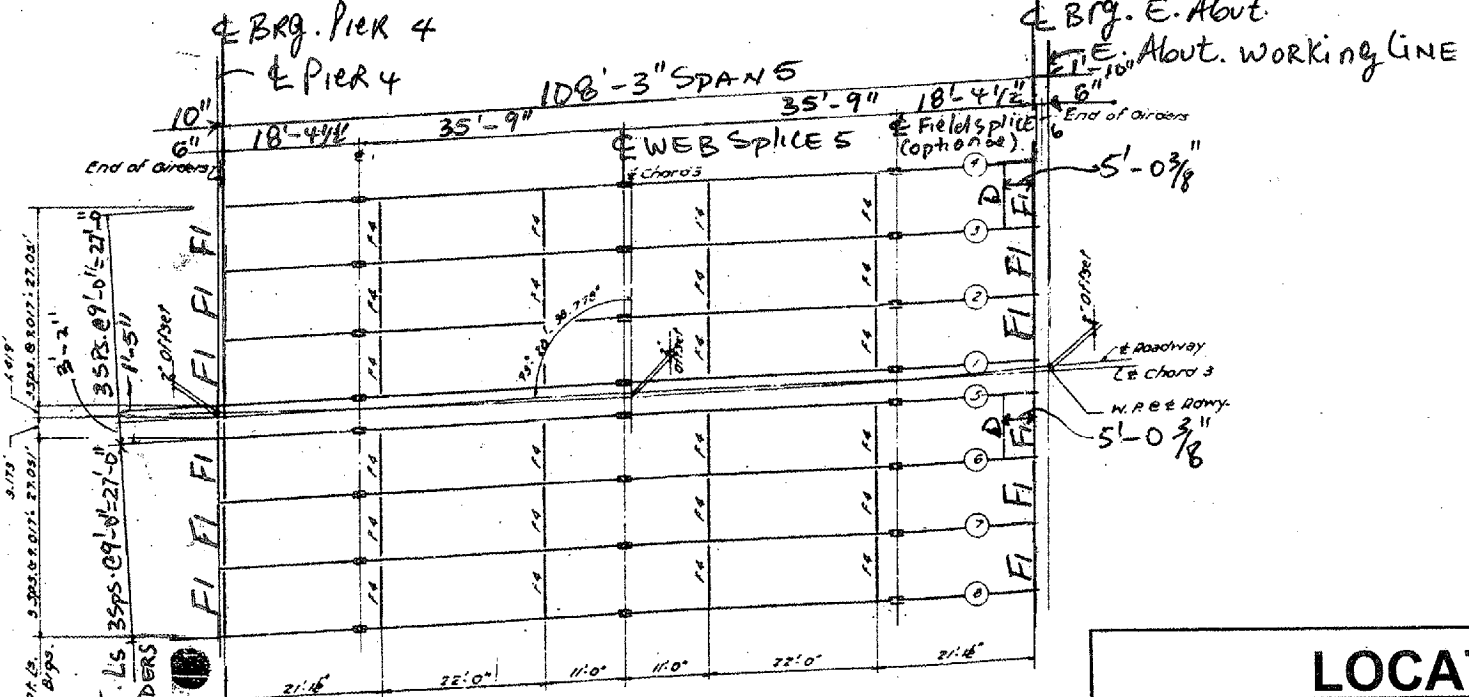
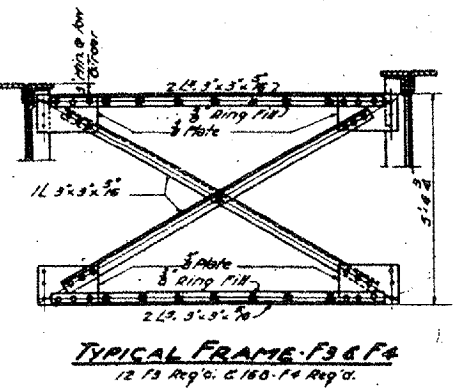
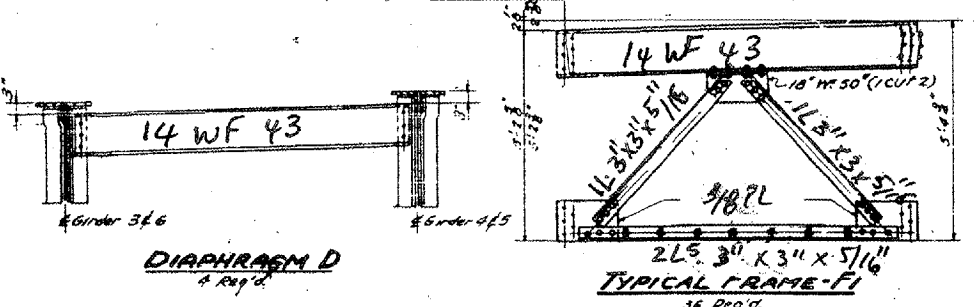
LOCATION NO.4
EXIST. BRIDGE PLANS
US 20 OVER FOX RIVER
SN: 045-0004

ROUTE	SECTION	COUNTY	TOTAL SHEETS	SHEET NUMBER
VARIOUS	2007-041 BP	VARIOUS	25	16

CONTRACT NO. 60D31



STRUCTURAL STEEL FRAMING PLAN - 2 SPAN UNITS

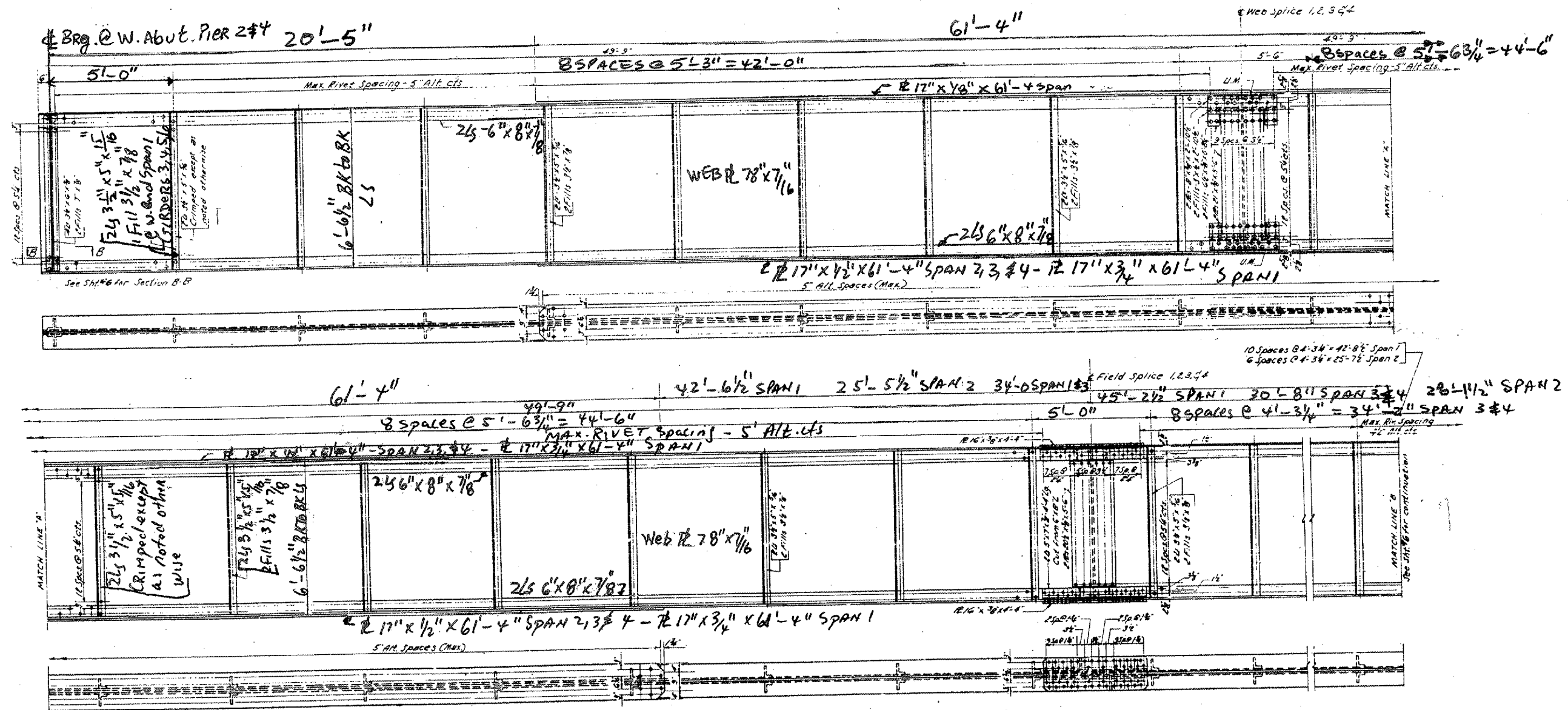


STRUCTURAL STEEL FRAMING PLAN - SINGLE SPAN UNIT

LOCATION NO.4
EXIST. BRIDGE PLANS
US 20 OVER FOX RIVER
SN: 045-0004

ROUTE	SECTION	COUNTY	TOTAL SHEETS	SHEET NUMBER
VARIOUS	2007-041 BP	VARIOUS	24	17

CONTRACT NO. 60D31



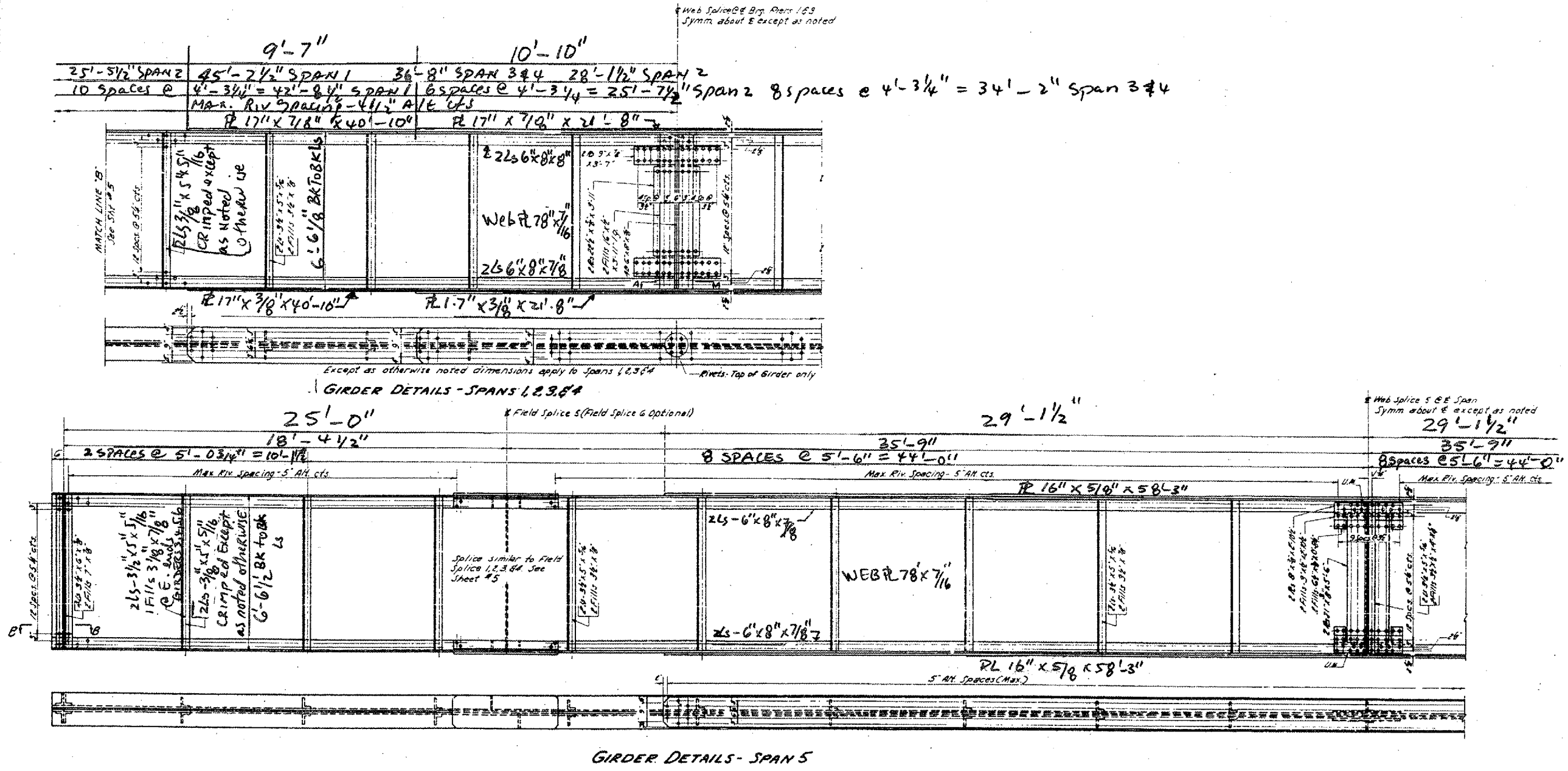
GIRDER DETAILS - SPANS 1, 2, 3 & 4
 Except as otherwise noted dimensions shown apply to Spans 1, 2, 3, & 4

LOCATION NO. 4

**EXIST. BRIDGE PLANS
 US 20 OVER FOX RIVER
 SN: 045-0004**

ROUTE VARIOUS	SECTION 2007-041 BP	COUNTY VARIOUS	TOTAL SHEETS 24	SHEET NUMBER 18
------------------	------------------------	-------------------	-----------------------	-----------------------

CONTRACT NO. 60D31



LOCATION NO.4

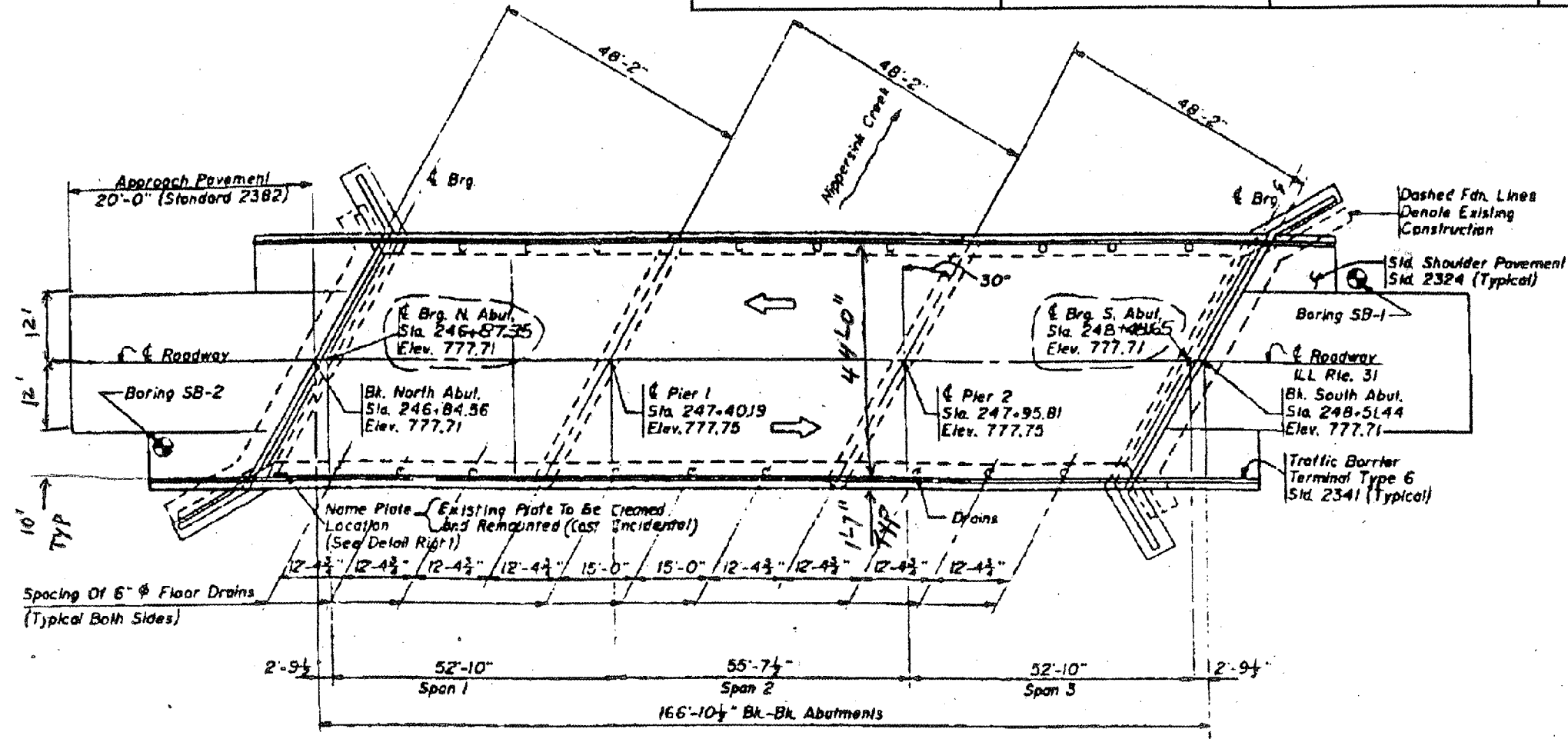
EXIST. BRIDGE PLANS

US 20 OVER FOX RIVER

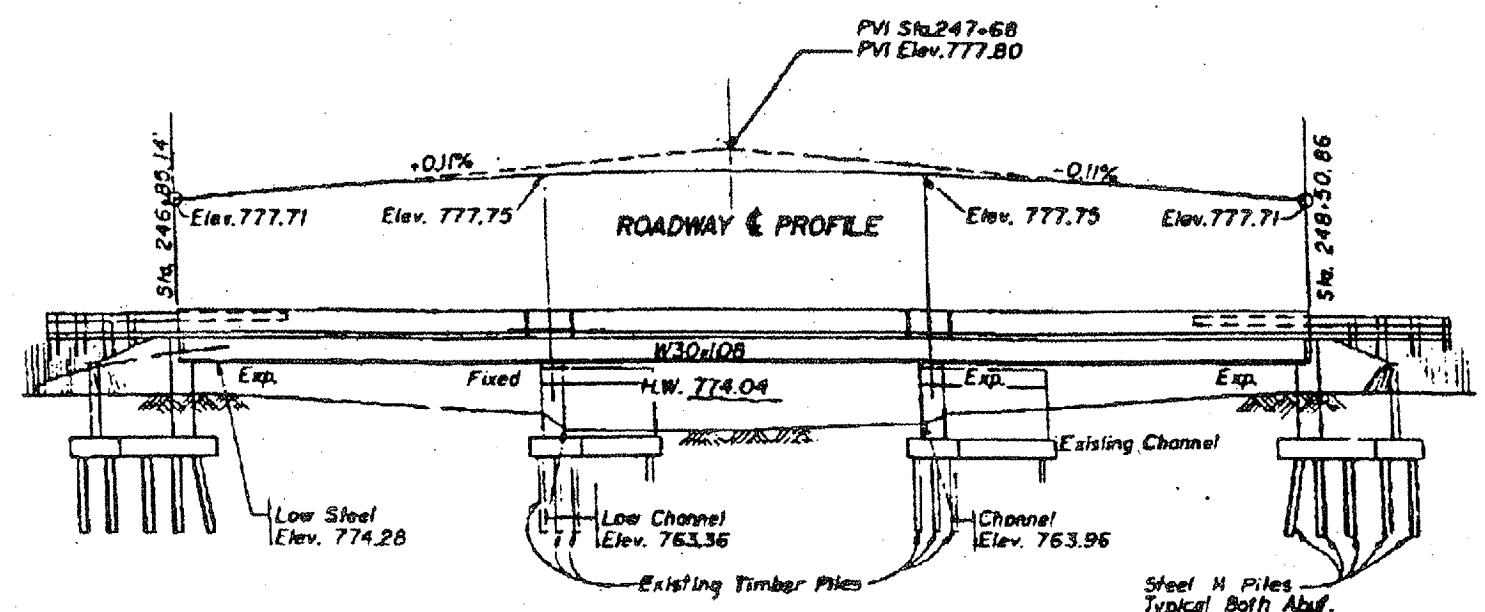
SN: 045-0004

ROUTE VARIOUS	SECTION 2007-041 BP	COUNTY VARIOUS	TOTAL SHEETS 25	SHEET NUMBER 19
------------------	------------------------	-------------------	-----------------------	-----------------------

CONTRACT NO. 60D31



PLAN



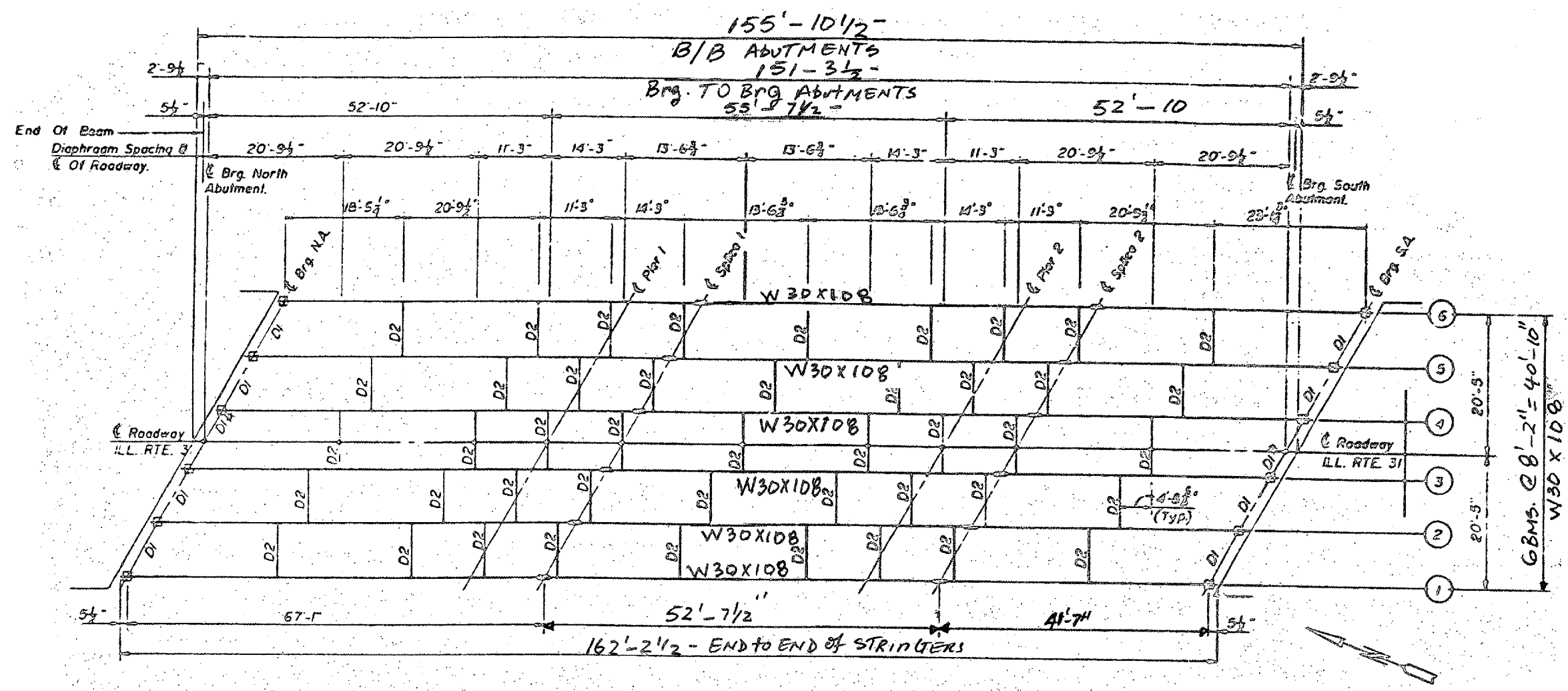
ELEVATION

FOR
INFORMATION
ONLY

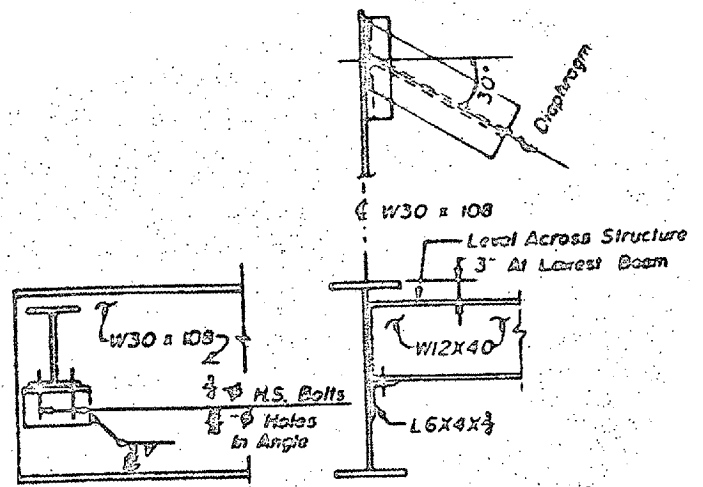
LOCATION NO.5
EXIST. BRIDGE PLANS
IL 31 OVER NIPPERSINK CREEK
SN: 056-0037

ROUTE	SECTION	COUNTY	TOTAL SHEETS	SHEET NUMBER
VARIOUS	2007-041 BP	VARIOUS	25	20

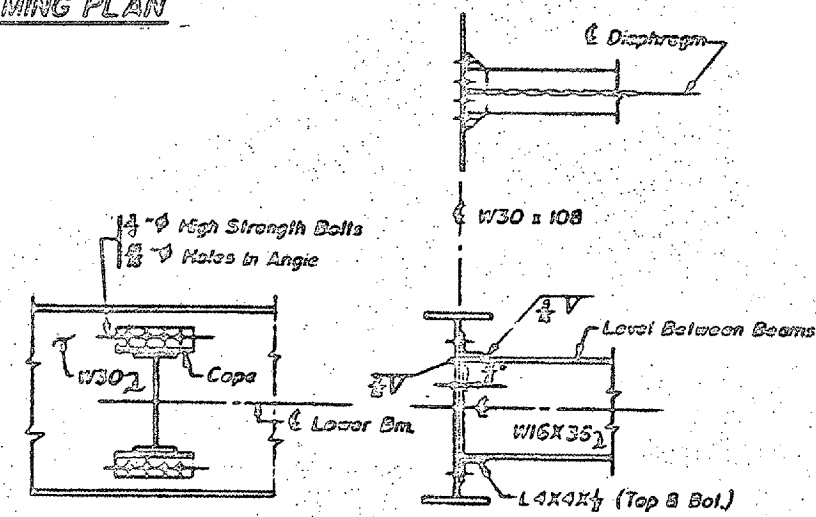
CONTRACT NO. 60D31



FRAMING PLAN



END DIAPHRAGM D1

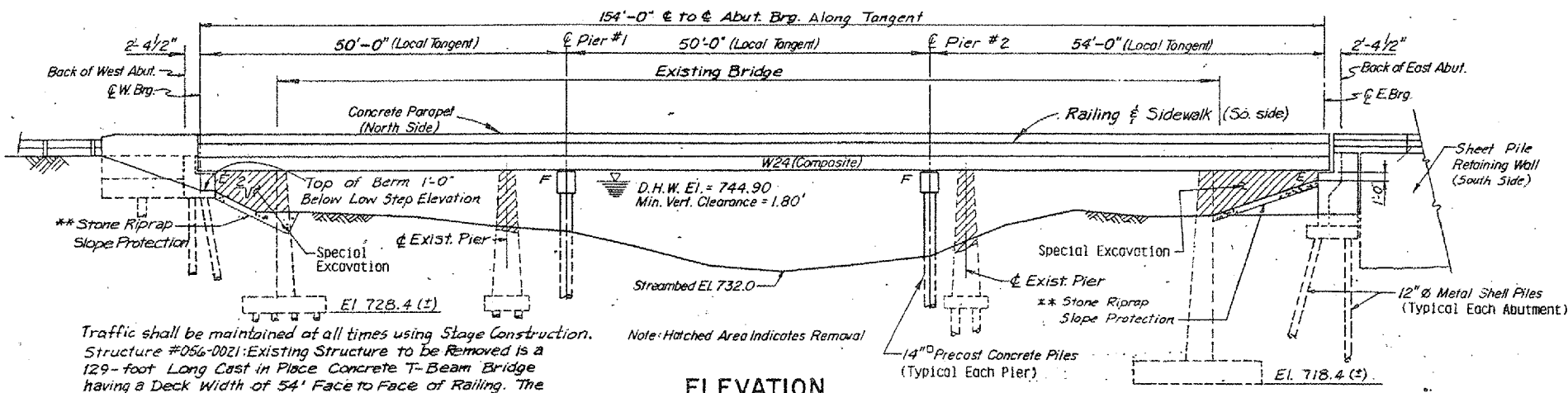


INTERIOR DIAPHRAGM D2

LOCATION NO.5
EXIST. BRIDGE PLANS
IL 31 OVER NIPPERSINK CREEK
SN: 056-0037

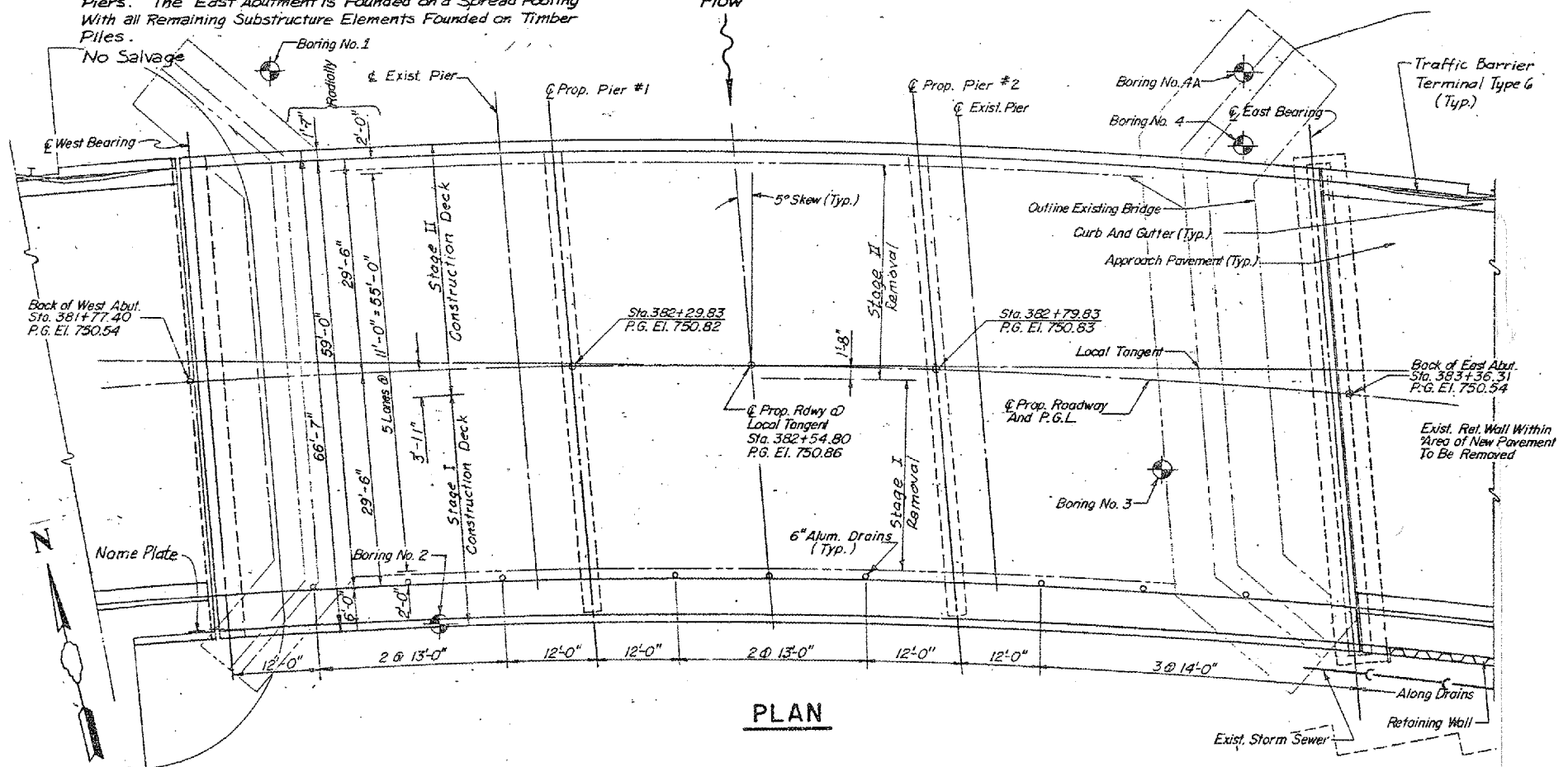
ROUTE VARIOUS	SECTION 2007-041 BP	COUNTY VARIOUS	TOTAL SHEETS 25	SHEET NUMBER 21
-------------------------	-------------------------------	--------------------------	---------------------------	---------------------------

CONTRACT NO. 60D31



Traffic shall be maintained at all times using Stage Construction. Structure #056-0021 Existing Structure to be Removed is a 129-foot Long Cast in Place Concrete T-Beam Bridge having a Deck Width of 54' Face to Face of Railing. The Structure Consists of 3 Simple Spans Supported on Full Height Abutments with Flared Wingwalls and Solid Shaft Concrete Piers. The East Abutment is Founded on a Spread Footing With all Remaining Substructure Elements Founded on Timber Piles.

ELEVATION



PLAN

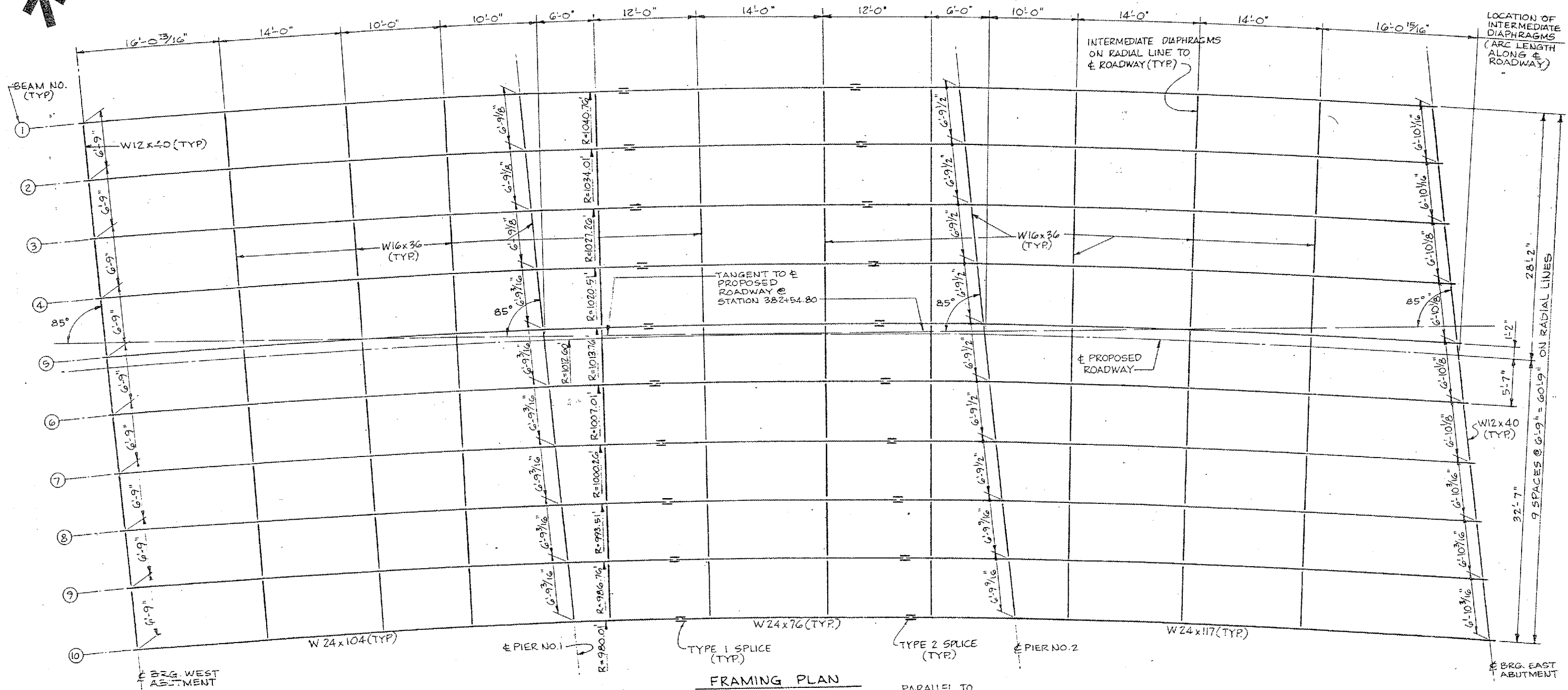
FOR
INFORMATION
ONLY

LOCATION NO.6

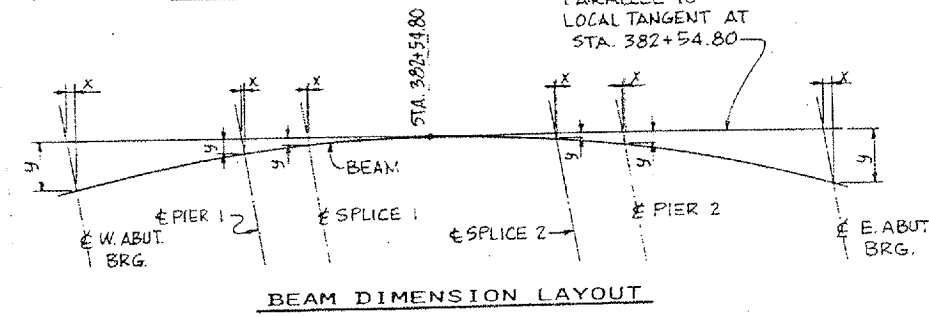
**EXIST. BRIDGE PLANS
US 12 OVER NIPPERSINK CREEK
SN: 056-0057**

ROUTE	SECTION	COUNTY	TOTAL SHEETS	SHEET NUMBER
VARIOUS	2007-041 BP	VARIOUS	25	22

CONTRACT NO. 60D31



FRAMING PLAN



BEAM DIMENSION LAYOUT

LOCATION NO.6

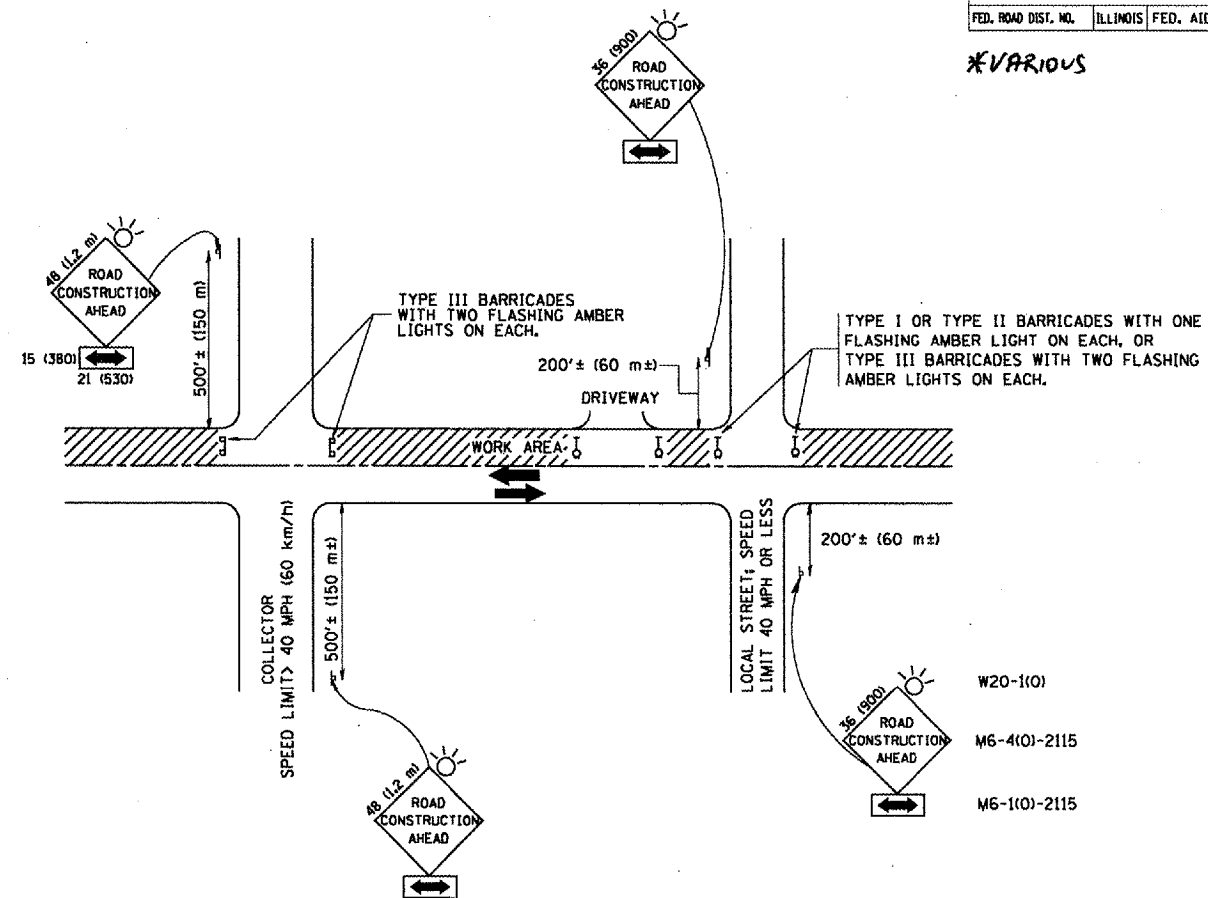
EXIST. BRIDGE PLANS

US 12 OVER NIPPERSINK CREEK

SN: 056-0057

F.A. RTE.	SECTION	COUNTY	TOTAL SHEETS	SHEET NO.
* 2007-0418P *			25	23
STA.	TO STA.			
FED. ROAD DIST. NO.	ILLINOIS	FED. AID PROJECT		

*VARIOUS



TRAFFIC CONTROL AND PROTECTION FOR SIDE ROADS, INTERSECTIONS, AND DRIVEWAYS

NOTES:

A. FOR NO LANE RESTRICTION ON THE SIDE ROAD OR DRIVEWAYS

1. SIDE ROAD WITH A SPEED LIMIT OF 40 MPH (60 km/h) OR LESS AS SHOWN ON THE DRAWING AND AS DIRECTED BY THE ENGINEER:

a) ONE ROAD CONSTRUCTION AHEAD SIGN 36 x 36 (900x900) WITH A FLASHER AND FLAG MOUNTED ON IT APPROXIMATELY 200' (60 m) IN ADVANCE OF THE MAIN ROUTE.

b) THE CLOSED PORTION OF THE MAIN ROUTE SHALL BE PROTECTED BY BLOCKING WITH TYPE I, TYPE II OR TYPE III BARRICADES, 1/3 OF THE CROSS SECTION OF THE CLOSED PORTION.

2. SIDE ROAD WITH A SPEED LIMIT GREATER THAN 40 MPH (60 km/h) AS SHOWN ON THE DRAWING AND AS DIRECTED BY THE ENGINEER:

a) ONE ROAD CONSTRUCTION AHEAD SIGN 48 x 48 (1.2 m x 1.2 m) WITH A FLASHER MOUNTED ON IT APPROXIMATELY 500' (150 m) IN ADVANCE OF THE MAIN ROUTE.

b) THE CLOSED PORTION OF THE MAIN ROUTE SHALL BE PROTECTED BY BLOCKING WITH TYPE III BARRICADES, 1/2 OF THE CROSS SECTION OF THE CLOSED PORTION.

3. WHEN THE SIDE ROAD LIES BETWEEN THE BEGINNING OF THE MAINLINE SIGNING AND THE WORK ZONE, A SINGLE HEADED ARROW (M6-1) SHALL BE USED IN LIEU OF THE DOUBLE HEADED ARROW (M6-4).

B. FOR A LANE CLOSURE ON A SIDE ROAD OR DRIVEWAY:

USE APPLICABLE PORTIONS OF THE TYPICAL APPLICATION OF TRAFFIC CONTROL DEVICES (STD. 701501, STD. 701606 OR THE APPROPRIATE STANDARD). THE SPACING OF SIGNS AND BARRICADES SHALL BE ADJUSTED FOR FIELD CONDITIONS AS DIRECTED BY THE ENGINEER. THE DIRECTIONAL ARROW SHALL BE COVERED OR REMOVED WHEN NO LONGER CONSISTENT WITH THE SIDE ROAD LANE CLOSURE.

C. ADVANCE WARNING SIGNS ARE TO BE OMITTED ON DRIVEWAY UNLESS OTHERWISE NOTED.

D. THE TRAFFIC CONTROL AND PROTECTION FOR SIDE ROADS, INTERSECTIONS, AND DRIVEWAYS SHALL BE INCIDENTAL TO THE COST OF SPECIFIED TRAFFIC CONTROL STANDARDS OR ITEMS.

All dimensions are in millimeters (inches) unless otherwise shown.

REVISIONS	
NAME	DATE
LHA	6/89
T. RAMMACHER	09/08/94
J. OBERLE	10/18/96
A. HOUSEH	03/06/96
A. HOUSEH	10/15/96
T. RAMMACHER	01/06/00

ILLINOIS DEPARTMENT OF TRANSPORTATION
TRAFFIC CONTROL AND PROTECTION
FOR
SIDE ROADS, INTERSECTIONS, AND
DRIVEWAYS

SCALE: NONE

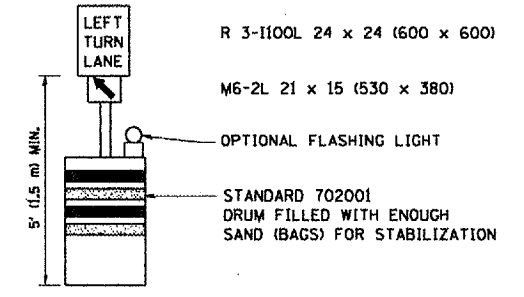
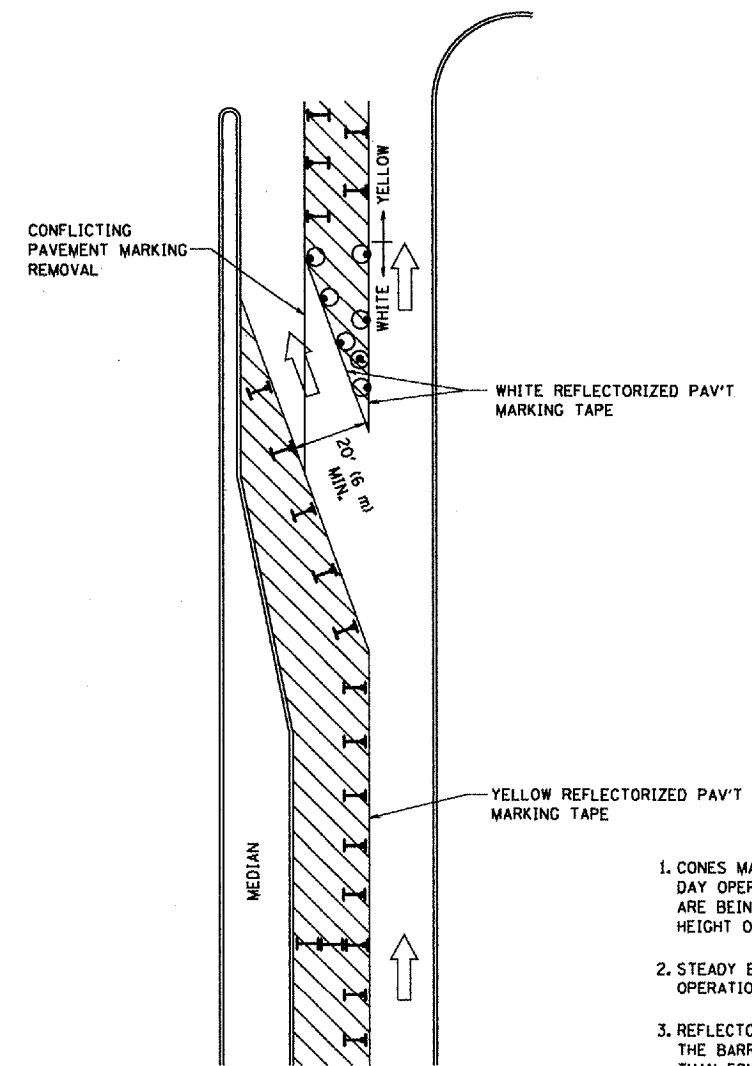
DRAWN BY

CHECKED BY

TC-10

F.A. RTE.	SECTION	COUNTY	TOTAL SHEETS	SHEET NO.
* 2007-041B *			25	24
STA.	TO STA.			
FED. ROAD DIST. NO.	ILLINOIS	FED. AID PROJECT		

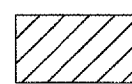
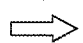
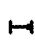


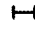
* VARIOUS



GENERAL NOTES

1. CONES MAY BE SUBSTITUTED FOR BARRICADES OR DRUMS AT HALF THE SPACING DURING DAY OPERATIONS. CONES SHALL BE A MINIMUM OF 28 (710) IN HEIGHT. WHEN CONES ARE BEING USED, THE "LEFT TURN LANE" SIGN MAY BE SKID MOUNTED AT A MINIMUM HEIGHT OF 5' (1.5 m).
2. STEADY BURNING LIGHTS WILL NOT BE REQUIRED ON BARRICADES OR DRUMS FOR DAY OPERATIONS. ALL LIGHTS SHALL BE MONODIRECTIONAL.
3. REFLECTORIZED TEMPORARY PAVEMENT MARKING TAPE SHALL BE PLACED THROUGHOUT THE BARRICADED AREA OF EACH TURN BAY WHERE THE CLOSURE TIME IS GREATER THAN FOURTEEN DAYS.
4. THIS APPLICATION ALSO APPLIES WHEN WORK IS BEING PERFORMED IN THE RIGHT LANE(S) AND THE RIGHT TURN BAY IS TO REMAIN OPEN. UNDER THIS CONDITION, "RIGHT TURN LANE" R3-100 24 x 24 (600 x 600) AND M6-2R 21 x 15 (530 x 380) SHALL BE USED.
5. THESE CONTROLS SHALL SUPPLEMENT MAINLINE TRAFFIC CONTROL FOR LANE CLOSURES.
6. LONGITUDINAL DIMENSIONS MAY BE ADJUSTED TO FIT FIELD CONDITIONS.
7. FORM BT 725 IS REQUIRED.
8. TRAFFIC CONTROL AND PROTECTION AT TURN BAYS (TO REMAIN OPEN TO TRAFFIC) SHALL BE INCLUDED IN THE COST SPECIFIED TRAFFIC CONTROL STANDARDS OR ITEMS.

LEGEND

-  WORK AREA
-  LANE OPEN TO TRAFFIC
-  TYPE I OR II BARRICADE WITH STEADY BURN LIGHT
-  DRUM WITH STEADY BURN LIGHT
-  DRUM WITH SIGN (WITH OPTIONAL FLASHING LIGHT) SEE DETAIL
-  TYPE I OR II CHECK BARRICADE WITH FLASHING LIGHT

All dimensions are in inches (millimeters) unless otherwise shown.

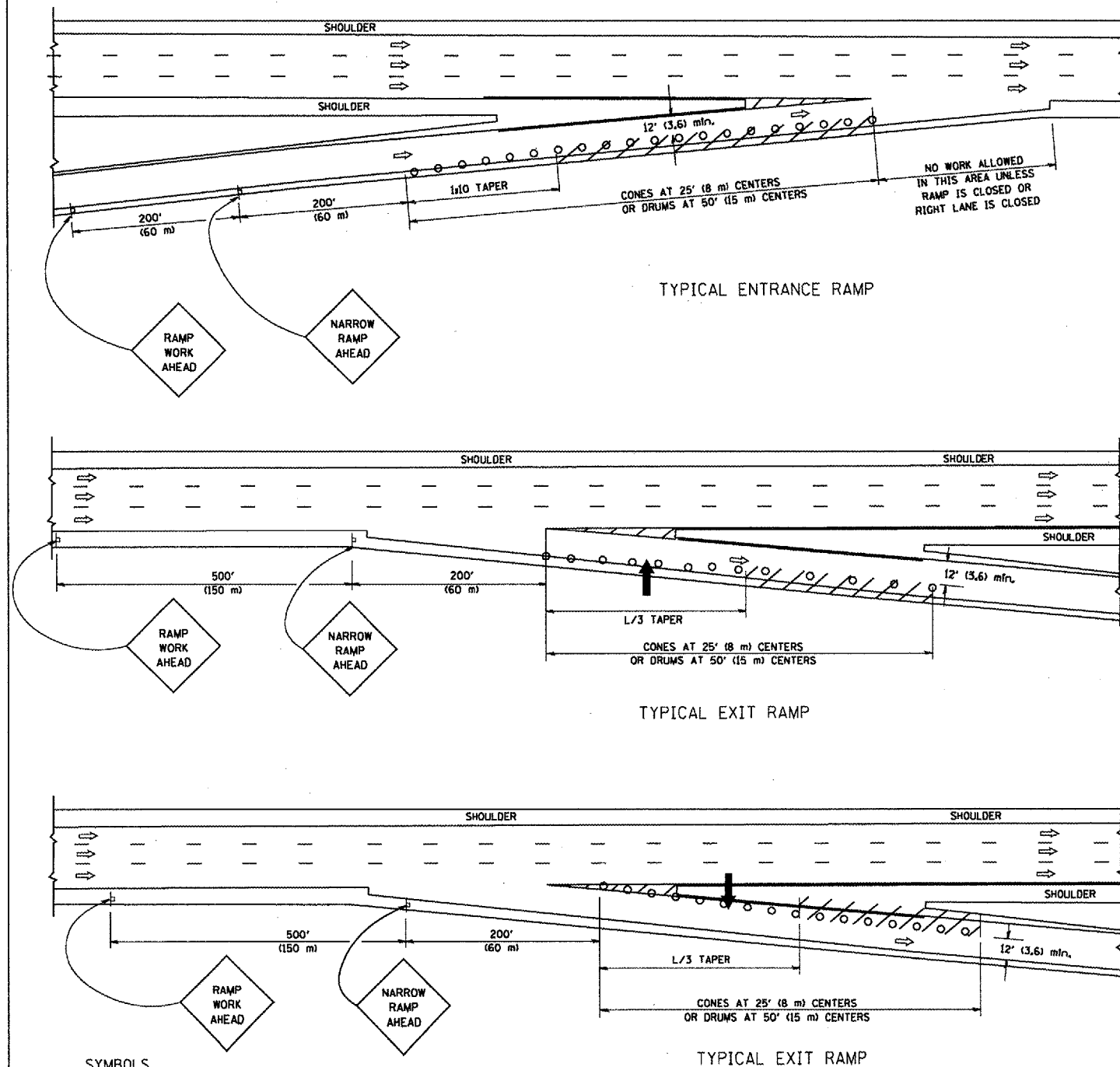
REVISIONS	
NAME	DATE
T. RAMWACHER	09/08/94
A. HOUSEH	11/07/95
A. HOUSEH	10/12/96
T. RAMWACHER	01/06/00

ILLINOIS DEPARTMENT OF TRANSPORTATION
**TRAFFIC CONTROL AND PROTECTION
 AT TURN BAYS
 (TO REMAIN OPEN TO TRAFFIC)**

SCALE: NONE

DRAWN BY
 CHECKED BY LHA
 TC-14

PARTIAL RAMP CLOSURE DETAILS



SYMBOLS

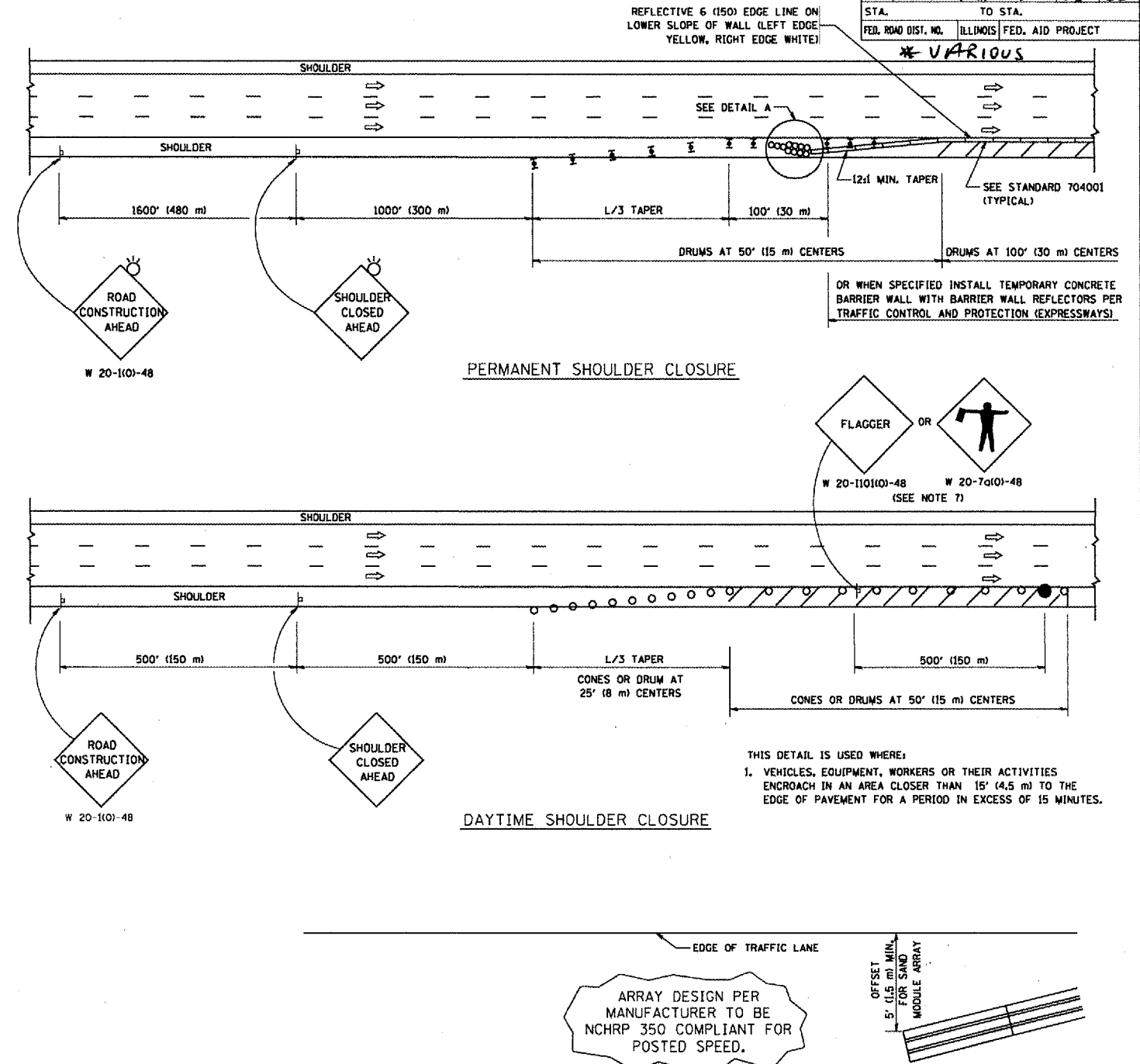
- ➔ ARROWBOARD
- ▨ WORK AREA
- ⊥ SIGN ON PORTABLE OR PERMANENT SUPPORT
- FLAGGER WITH CONTROL SIGN
- ☒ TYPE II BARRICADE, DRUM OR VERTICAL BARRICADE WITH STEADY BURN MONO-DIRECTIONAL LIGHT
- CONE, DRUM OR BARRICADE

GENERAL NOTES

1. THE "L" DISTANCE EQUALS:

SPEED LIMIT	FORMULAS
45 mph (80 km/h) OR GREATER	METRIC: $L=0.65(W)(S)$ ENGLISH: $L=(W)(S)$
	W = WIDTH OF OFFSET IN FEET (METERS)
	S = NORMAL POSTED SPEED MPH (KM/H)
2. PLASTIC DRUMS WITH HIGH PERFORMANCE REFLECTIVE SHEETING AND STEADY BURNING LIGHTS ARE REQUIRED FOR ALL NIGHTTIME CLOSURES.
3. ALL SIGNS SHALL BE POST MOUNTED IF THE CLOSURE TIME EXCEEDS FOUR DAYS.
4. FLASHING LIGHTS SHALL BE USED DURING THE HOURS OF DARKNESS AND SHALL BE INSTALLED ABOVE THE FIRST TWO SETS OF SIGNS.

SHOULDER CLOSURE DETAILS



F.A. RTE.	SECTION	COUNTY	TOTAL SHEETS	SHEET NO.
* 2007-0418P *			25	25
STA.	TO STA.			
FED. ROAD DIST. NO.	ILLINOIS	FED. AID PROJECT	* VARIOUS	

PERMANENT SHOULDER CLOSURE

DAYTIME SHOULDER CLOSURE

THIS DETAIL IS USED WHERE:
 1. VEHICLES, EQUIPMENT, WORKERS OR THEIR ACTIVITIES ENCR OACH IN AN AREA CLOSER THAN 15' (4.5 m) TO THE EDGE OF PAVEMENT FOR A PERIOD IN EXCESS OF 15 MINUTES.

ARRAY DESIGN PER MANUFACTURER TO BE NCHRP 350 COMPLIANT FOR POSTED SPEED.

DETAIL "A"
 IMPACT ATTENUATOR, TEMPORARY
 (SEE NOTE 5)

ALL DIMENSIONS ARE IN INCHES (MILLIMETERS) UNLESS OTHERWISE SHOWN.

REVISIONS	
NAME	DATE
DWS	11/96
JAF	12/02
NCHRP 350	04/03
JAF	2/06
SPB	1/07

ILLINOIS DEPARTMENT OF TRANSPORTATION
 TRAFFIC CONTROL DETAILS
 FOR FREEWAY
 SHOULDER CLOSURES
 PARTIAL RAMP CLOSURES
 DESIGNED BY: DWS
 DRAWN BY
 CHECKED BY
 TC-17

PLOT DATE = 3/7/2007
 FILE NAME = K:\vms\mst\7.dgn
 PLOT SCALE = 0.00000 1/1
 USER NAME = bman-01