

STATE OF ILLINOIS
DEPARTMENT OF TRANSPORTATION
DIVISION OF HIGHWAYS
PROPOSED
HIGHWAY PLANS

F.A.P. RTE.	SECTION	COUNTY	TOTAL SHEETS	SHEET NO.
332	2007-034 I	COOK & WILL	53	1
FED. ROAD DIST. NO.	ILLINOIS CONTRACT NO.	60D34		

53
+1
54

FOR INDEX OF SHEETS, SEE SHEET NO. 2

TRAFFIC DATA
 ADT (2005) = 11,200 TO 48,600
 POSTED SPEED LIMIT = 55 MPH

THE PROJECT IS LOCATED IN THE VILLAGES OF CRETE, STEGER, SAUK VILLAGE, FORD HEIGHTS, LYNWOOD AND LANSING

FAP 332 (IL 394)
SECTION 2007-044 I
ILLINOIS 1 TO SOUTH OF INTERSTATE 80
HIGH TENSION MEDIAN CABLE, GUARDRAIL REPAIRS
SHOULDER RUMBLE STRIPS AND LIGHTING INSTALLATION
PROJECT: ACHSIP-0332 (089)
COOK & WILL COUNTIES
C-91-006-08



GRAEF, ANHALT, SCHLOEMER & ASSOCIATES, INC.
 ENGINEERS & SCIENTISTS
 8501 W. Higgins Road; Suite 280
 Chicago, Illinois 60631
 (773) 399-0112

STATE OF ILLINOIS
DEPARTMENT OF TRANSPORTATION
DIVISION OF HIGHWAYS

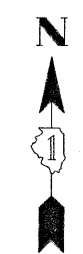
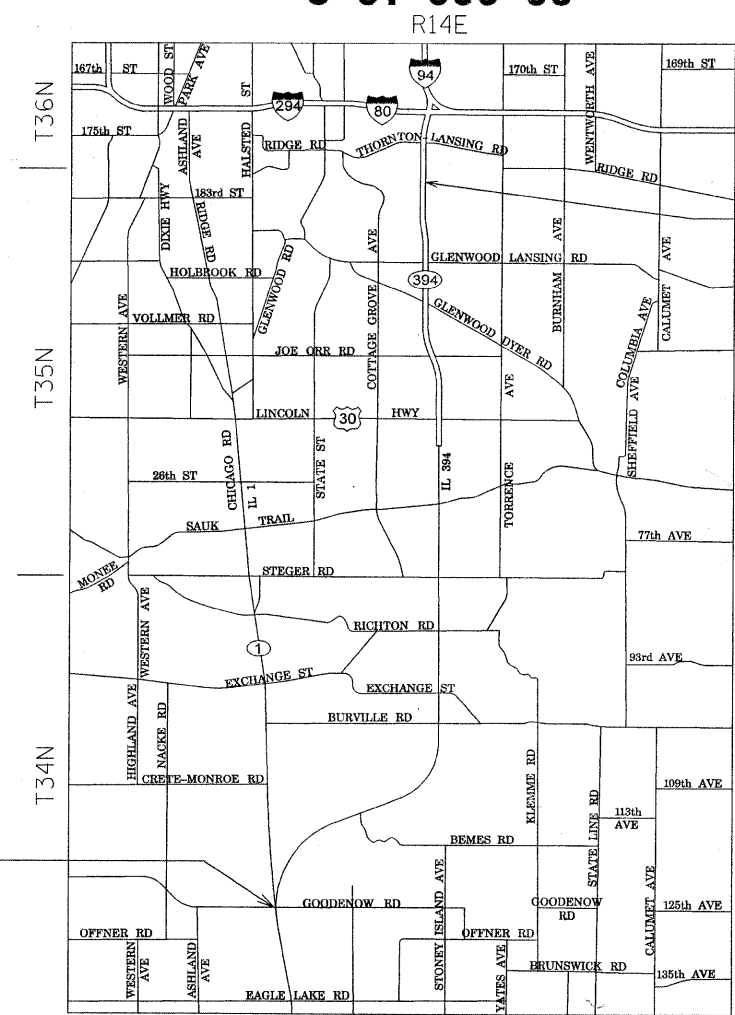
SUBMITTED Dec. 20 20 07

Diane O'Keefe / ca
 DEPUTY DIRECTOR OF HIGHWAYS, REGION ENGINEER

February 4, 20 08
Eric E. Harn / RE
 INTERIM ENGINEER OF DESIGN AND ENVIRONMENT

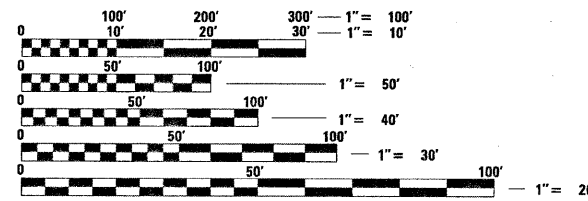
February 1, 20 08
Christine M. Reed / RE
 DIRECTOR OF HIGHWAYS, CHIEF ENGINEER

PRINTED BY THE AUTHORITY
OF THE STATE OF ILLINOIS



PROJEC ENDS
 STATION 173+00

Peter M. Johnston
 12-19-07
 PETER M. JOHNSTON
 062-047647
 REGISTERED
 PROFESSIONAL
 ENGINEER
 OF
 ILLINOIS
 Exp 11-30-09



FULL SIZE PLANS HAVE BEEN PREPARED USING STANDARD ENGINEERING SCALES. REDUCED SIZED PLANS WILL NOT CONFORM TO STANDARD SCALES. IN MAKING MEASUREMENTS ON REDUCED PLANS, THE ABOVE SCALES MAY BE USED.

J.U.L.I.E.
 JOINT UTILITY LOCATION INFORMATION FOR EXCAVATION
 1-800-892-0123
 OR 811

PROJECT ENGINEER: PETER JOHNSTON P.E. (773) 399-1112
 PROJECT MANAGER: KEN ENG, P.E. (847) 701-1247

CONTRACT NO. 60D34

THORNTON, BLOOM & CRETE TOWNSHIPS
 NOT TO SCALE
 GROSS AND NET LENGTH OF PROJECT: 68,800 FT (13.03 MILES)