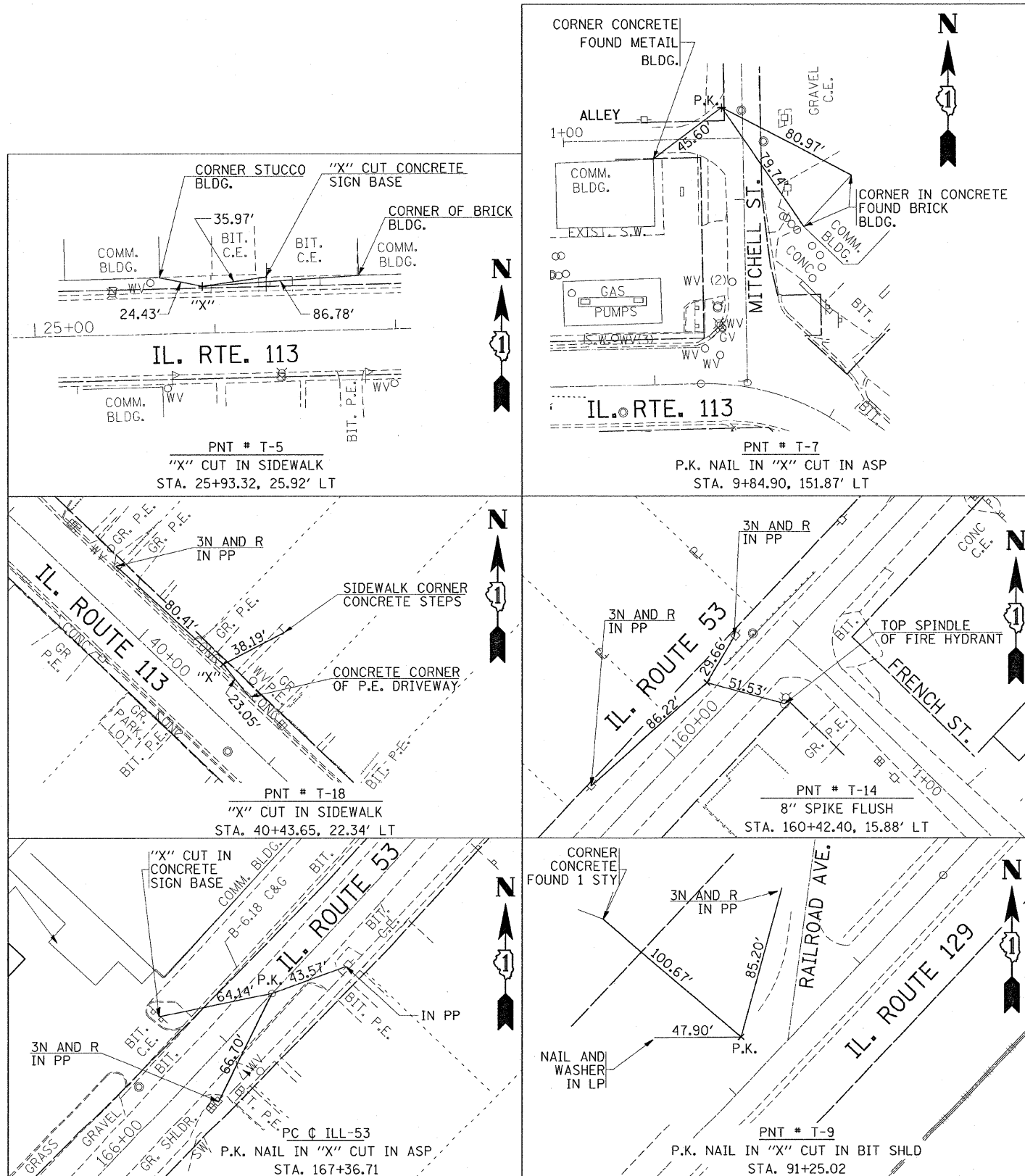


F.A.S. RTE.	SECTION	COUNTY	TOTAL SHEETS	SHEET NO.
2320	113X-N	WILL	133	17
STA.		TO STA.		
FED. ROAD DIST. NO. 1 ILLINOIS		FED. AID PROJECT		



DESCRIPTION

- BM # 27A SPIKE IN P.P. @ SOUTHEAST CORNER OF ILL- 113 AND ILL- 129
ELEV. = 580.71'
- BM # 100 X - CUT IN SLY BOLT
FH. STA. 105 + 00 ± 75' L ON ILL 129
ELEV. = 577.80
- BM # 101 X - CUT IN SLY BOLT
FH. @ NORTHEAST CORNER OF ILL 113 & RAILROAD ST.
ELEV. = 580.96
- BM # 102 SET 8" SPIKE IN P.P. @ NORTHWEST CORNER OF ILL- 129 & RAILROAD ST.
ELEV. = 580.69
- BM # 103 X - CUT IN SLY BOLT
FH. STA. 44 + ± 30' L ON ILL 113
ELEV. = 582.71

REVISIONS	
NAME	DATE

ILLINOIS DEPARTMENT OF TRANSPORTATION
ILLINOIS 113 AT
ILLINOIS 129 AND ILLINOIS 53
TIES AND BENCHMARKS PLAN

SCALE: VERT. _____
HORIZ. _____
DATE _____ DRAWN BY _____
CHECKED BY _____