

F.A.P. RT.	SECTION	COUNTY	TOTAL SHEETS	SHEET NO.
308	1#B-1, 1#B-2 R	ROCK ISLAND	210	23
STA. N/A TO STA. N/A				
FED. ROAD DIST. NO. 2 ILLINOIS FED. AID PROJECT				

HORIZONTAL CONTROL POINTS

POINT	NORTH	EAST	ELEVATION	CHAIN	STATION	OFFSET	DESCRIPTION
1	1753419.5640	2176754.8780	565.384	IL92	1457+93.8580	7.5699 RT	GPS CONTROL POINT
2	1754403.1990	2177483.4710	563.368	IL92	1469+99.0903	221.5809 RT	GPS CONTROL POINT
3	1754721.8350	2177155.9290	563.064	IL92	1471+38.4120	213.6226 LT	GPS CONTROL POINT
9	1758542.0600	2179933.8800	569.599	IL92	1518+25.8231	194.9847 RT	GPS CONTROL POINT
10	1758481.9190	2179539.9120	563.070	IL92	1517+24.5870	190.5157 LT	GPS CONTROL POINT
12	1759919.5360	2179734.5980	562.658	IL92	1531+85.9942	38.0468 LT	GPS CONTROL POINT
14	1761348.3420	2180098.0880	553.846	IL92	1546+78.5583	231.4721 RT	GPS CONTROL POINT
15	1761536.9650	2179679.5050	554.539	IL92	1547+54.5730	221.3702 LT	GPS CONTROL POINT
90394	1754489.9230	2177270.5360	581.492	IL92	1469+81.8558	7.6904 LT	GPS CONTROL POINT
90395	1755757.1410	2178009.7390	565.068	IL92	1484+56.2089	40.5569 RT	GPS CONTROL POINT
90396	1757236.2990	2179315.1220	586.780	IL92	1504+30.3694	30.4201 RT	GPS CONTROL POINT, PK NAIL
90397	1757687.0050	2179565.8670	591.524	IL92	1509+40.3003	41.3568 RT	GPS CONTROL POINT, PK NAIL
90398	1758633.2500	2179786.1390	580.197	IL92	1519+02.6121	40.8584 RT	GPS CONTROL POINT, PIN
90399	1761368.2360	2179824.9860	571.605	IL92	1546+32.4830	38.7149 LT	GPS CONTROL POINT, PIN
903100	1762244.4930	2180168.5590	566.524	IL92	1555+62.5807	54.4937 LT	GPS CONTROL POINT, PK NAIL

BENCH MARKS AND VERTICAL CONTROL POINTS

POINT	NORTH	EAST	ELEVATION	CHAIN	STATION	OFFSET	DESCRIPTION
400	1762337.3710	2180217.0690	570.010	IL92	1556+64.8459	63.8008 LT	BOLT, TOP
401	1762822.7410	2180711.7340	587.034	IL92	1563+48.9915	0.4261 LT	WALL, CHISELED SQUARE
494	1754536.2560	2177244.2830	583.664	IL92	1470+11.6384	51.8375 LT	WALL, CHISELED SQUARE
497	1757548.7090	2179496.5130	595.137	IL92	1507+87.7362	35.0542 RT	WALL, CHISELED SQUARE
498	1758585.9490	2179777.7070	583.126	IL92	1518+55.4716	35.7189 RT	WALL, CHISELED SQUARE
499	1761383.7380	2179831.1920	574.049	IL92	1546+48.7807	36.2206 LT	WALL, CHISELED SQUARE

SURVEY WORK POINTS

POINT	NORTH	EAST	ELEVATION	CHAIN	STATION	OFFSET	DESCRIPTION
91	1757766.3950	2179614.7240	587.961	IL92	1510+30.6239	57.1319 RT	TOPO SURVEY POINT
92	1757947.3390	2179700.1150	580.870	IL92	1512+24.9335	78.9183 RT	TOPO SURVEY POINT
93	1754560.9490	2177622.9040	567.285	IL92	1472+02.4419	276.1223 RT	TOPO SURVEY POINT
94	1754745.4580	2177607.4930	571.091	IL92	1473+60.7578	180.1164 RT	TOPO SURVEY POINT
95	1757174.2250	2179465.9120	565.253	IL92	1504+58.5188	190.8463 RT	TRAVERSE STATION
100	1758496.2510	2179235.6910	562.515	IL92	1516+96.5737	494.0777 LT	TOPO SURVEY POINT
104	1757543.5280	2179425.4830	564.027	IL92	1507+51.7950	26.3997 LT	TOPO SURVEY POINT
105	1757663.6740	2179440.7560	573.038	IL92	1508+68.7523	64.0975 LT	TOPO SURVEY POINT
106	1757359.1030	2179408.2190	573.747	IL92	1505+81.7156	45.7189 RT	TOPO SURVEY POINT
107	1757405.5030	2179332.3020	589.702	IL92	1505+84.0466	43.2248 LT	TOPO SURVEY POINT
108	1757245.2010	2179240.5050	583.930	IL92	1503+96.7790	36.8207 LT	TOPO SURVEY POINT
109	1757097.3280	2179137.5650	576.781	IL92	1502+14.3003	34.7974 LT	TOPO SURVEY POINT
110	1757867.4530	2179538.4960	585.224	IL92	1510+98.9088	49.4035 LT	TOPO SURVEY POINT

REFERENCE TIES

POINT	CHAIN	STATION	OFFSET	DESCRIPTION
500	IL92	1469+97.1114	11.6795 LT	WALL, CHISELED "X"
501	IL92	1469+84.0978	12.056 RT	WALL, CHISELED "X"
502	IL92	1484+35.7044	52.7986 LT	POLE-LIGHT
503	IL92	1485+53.9547	0.3026 RT	SPBGR, END
504	IL92	1505+16.1173	44.5999 RT	POLE-LIGHT
505	IL92	1504+30.4376	1.3905 RT	ISLAND, CROSS CUT
506	IL92	1504+30.9347	38.2295 LT	CATCH BASIN, CORNER
507	IL92	1508+84.0585	48.275 RT	SIGN FDN, CORNER
508	IL92	1509+68.3737	55.474 LT	POLE-LIGHT
509	IL92	1510+82.1835	67.1091 RT	POLE-LIGHT
510	IL92	1519+34.6216	64.7341 RT	POLE-SIGN
511	IL92	1520+91.0942	46.2824 RT	POLE-LIGHT
512	IL92	1518+72.5242	45.3394 LT	POLE-LIGHT
513	IL92	1546+16.6859	46.4937 RT	POLE-LIGHT
514	IL92	1544+70.7699	46.0317 LT	POLE-LIGHT
515	IL92	1546+58.5785	30.1714 LT	BRIDGE DECK, CORNER
516	IL92	1555+61.2901	1.7302 LT	ISLAND, CHISELED "X"
517	IL92	1554+27.4188	75.5648 LT	POLE-LIGHT
518	IL92	1556+65.2309	63.7207 LT	POLE-LIGHT

CURVE POINT NUMBERS

CURVE	PI	CC	PC	PT
300	300	301	302	303
310	310	311	312	313
320	320	321	322	323
330	330	331	332	333

SIDE ROADS INFORMATION

POINT	NORTH	EAST	CHAIN	STATION	OFFSET
6015	1761421.1590	2179974.5720	IL92	1547+20.7478	93.7224 RT
6065	1761472.4530	2179794.8980	IL92	1547+24.2382	93.0974 LT
6085	1758511.4630	2179822.2700	IL92	1517+69.9941	83.1635 LT
6135	1758514.4090	2179651.7030	IL92	1517+84.8909	86.7770 RT
6174	1754477.5640	2177391.3030	IL92	1470+24.5998	105.9334 RT
6194	1754659.1570	2177237.8470	IL92	1471+18.7984	112.3586 LT

Chain IL92 contains:
CUR 300 CUR 310 CUR 320 CUR 330 1205

Beginning chain IL92 description

Curve Data
 Curve 300
 P.I. Station 1356+86.2067 N 1,744,335.9743 E 2,172,225.6373
 Delta = 25° 25' 06.20" (RT)
 Degree = 1° 00' 02.21"
 Tangent = 1,291.3911
 Length = 2,540.2825
 Radius = 5,726.0699
 External = 143.8166
 Long Chord = 2,519.5022
 Mid. Ord. = 140.2930
 P.C. Station 1343+94.8155 N 1,743,044.7961 E 2,172,202.1856
 P.T. Station 1369+35.0981 N 1,745,492.0972 E 2,172,801.0247
 C.C. = N 1,742,940.8107 E 2,177,927.3113
 Back = N 1° 02' 25.97" E
 Ahead = N 26° 27' 32.17" E
 Chord Bear = N 13° 44' 59.07" E

Course from PT 300 to PC 310 N 26° 27' 32.17" E Dist 10,982.9456

Curve Data
 Curve 310
 P.I. Station 1483+61.6490 N 1,755,721.7617 E 2,177,892.1964
 Delta = 17° 19' 40.89" (RT)
 Degree = 1° 58' 05.21"
 Tangent = 443.6052
 Length = 880.4378
 Radius = 2,911.2013
 External = 33.6041
 Long Chord = 877.0862
 Mid. Ord. = 33.2206
 P.C. Station 1479+18.0437 N 1,755,324.6224 E 2,177,694.5453
 P.T. Station 1487+98.4815 N 1,756,042.0082 E 2,178,199.1619
 C.C. = N 1,754,027.5184 E 2,180,300.8097
 Back = N 26° 27' 32.17" E
 Ahead = N 43° 47' 13.06" E
 Chord Bear = N 35° 07' 22.61" E

Course from PT 310 to PC 320 N 43° 47' 13.06" E Dist 1,092.6783

Curve Data
 Curve 320
 P.I. Station 1510+08.6470 N 1,757,637.5659 E 2,179,728.5498
 Delta = 42° 40' 47.21" (LT)
 Degree = 2° 00' 11.25"
 Tangent = 1,117.4872
 Length = 2,130.6606
 Radius = 2,860.3206
 External = 210.5443
 Long Chord = 2,081.7402
 Mid. Ord. = 196.1090
 P.C. Station 1498+91.1598 N 1,756,830.8321 E 2,178,955.2722
 P.T. Station 1520+21.8204 N 1,758,754.8444 E 2,179,750.1427
 C.C. = N 1,758,810.1136 E 2,176,890.3561
 Back = N 43° 47' 13.06" E
 Ahead = N 1° 06' 25.85" E
 Chord Bear = N 22° 26' 49.45" E

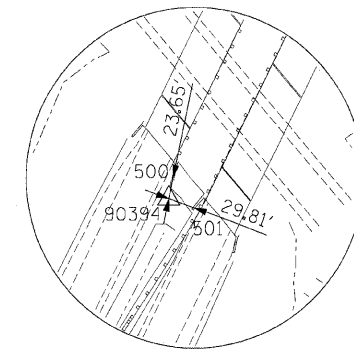
Course from PT 320 to PC 330 N 1° 06' 25.85" E Dist 2,012.3308

Curve Data
 Curve 330
 P.I. Station 1551+90.3551 N 1,761,922.7875 E 2,179,811.3674
 Delta = 43° 55' 30.63" (RT)
 Degree = 1° 59' 54.21"
 Tangent = 1,156.2039
 Length = 2,198.0256
 Radius = 2,867.0937
 External = 224.3515
 Long Chord = 2,144.5923
 Mid. Ord. = 208.0700
 P.C. Station 1540+34.1512 N 1,760,766.7995 E 2,179,789.0264
 P.T. Station 1562+32.1768 N 1,762,739.8853 E 2,180,629.3885
 C.C. = N 1,760,711.3994 E 2,182,655.5848
 Back = N 1° 06' 25.85" E
 Ahead = N 45° 01' 56.47" E
 Chord Bear = N 23° 04' 11.16" E

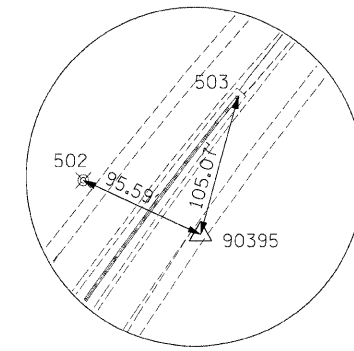
Course from PT 330 to 1205 N 45° 01' 56.47" E Dist 1,597.3002

Point 1205 N 1,763,868.7091 E 2,181,759.4879 Sta 1578+29.4770

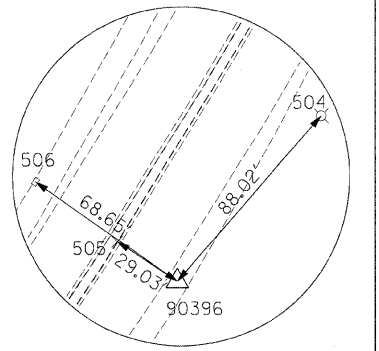
Ending chain IL92 description



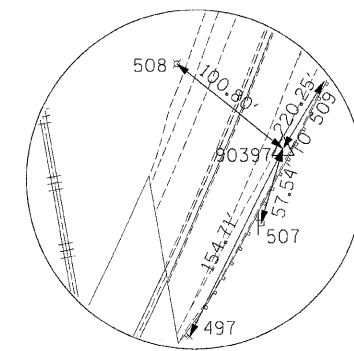
HORIZONTAL CONTROL POINT POINT NO. 90394



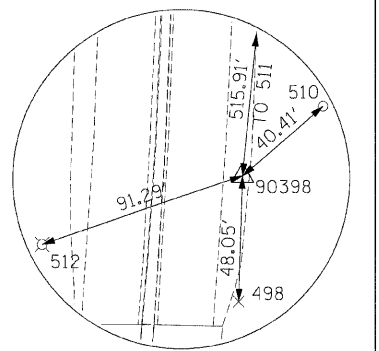
HORIZONTAL CONTROL POINT POINT NO. 90395



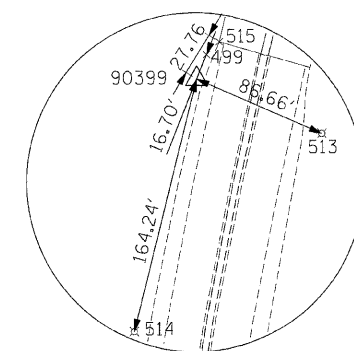
HORIZONTAL CONTROL POINT POINT NO. 90396



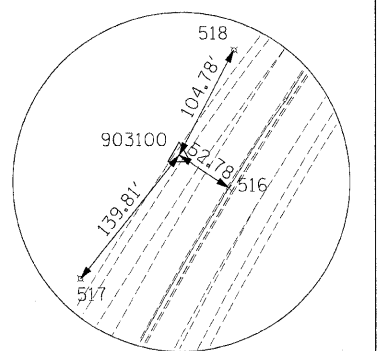
HORIZONTAL CONTROL POINT POINT NO. 90397



HORIZONTAL CONTROL POINT POINT NO. 90398



HORIZONTAL CONTROL POINT POINT NO. 90399



HORIZONTAL CONTROL POINT POINT NO. 903100

NOTES:

- COORDINATES ARE BASED ON THE ILLINOIS STATE PLANE COORDINATE SYSTEM - WEST ZONE.
- CENTERLINE OF ROUTE 308 (IL-92) ESTABLISHED BY IDOT.

REVISIONS	
NAME	DATE

ILLINOIS DEPARTMENT OF TRANSPORTATION

HORIZONTAL AND VERTICAL CONTROL PLAN

SCALE: N.T.S.
DATE: 12/08/06

DRAWN BY: TLL
CHECKED BY: MGZ

IL 92 HORIZONTAL AND VERTICAL CONTROL

DATE = 12/08/06
FILE NAME = ILL92
PLOT SCALE = 1"=100'
USER NAME = TLL