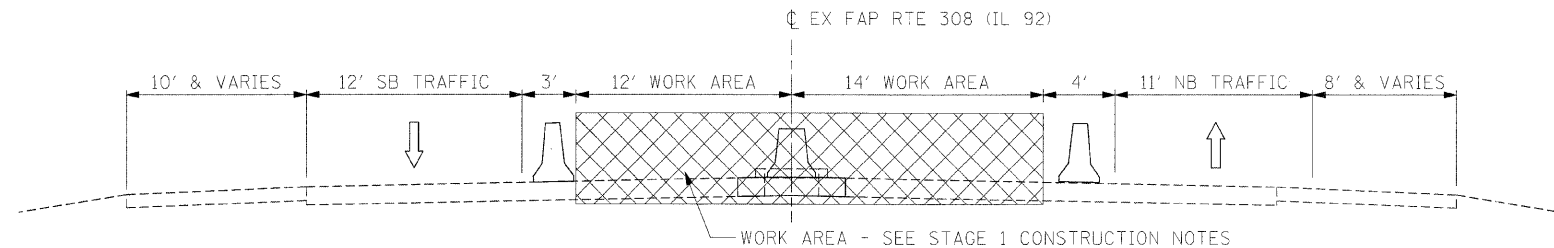
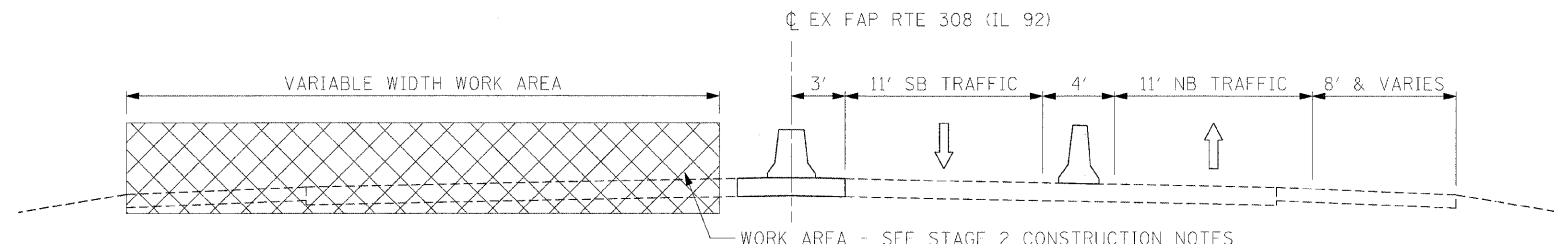


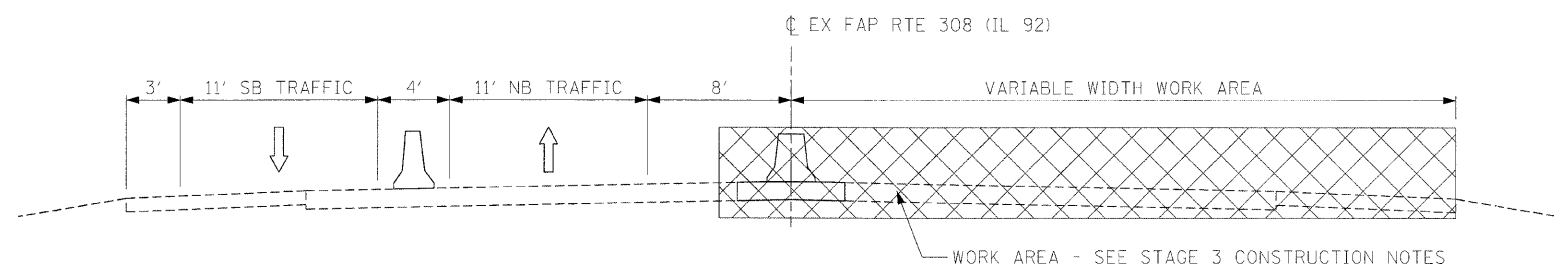
F.A.P. RTE.	SECTION	COUNTY	TOTAL SHEETS	SHEET NO.
308	1 (NB, SB, WB, EB-2) R	ROCK ISLAND	210	46
STA. N/A		TO STA. N/A		
FED. ROAD DIST. NO. 2		ILLINOIS FED. AID PROJECT		



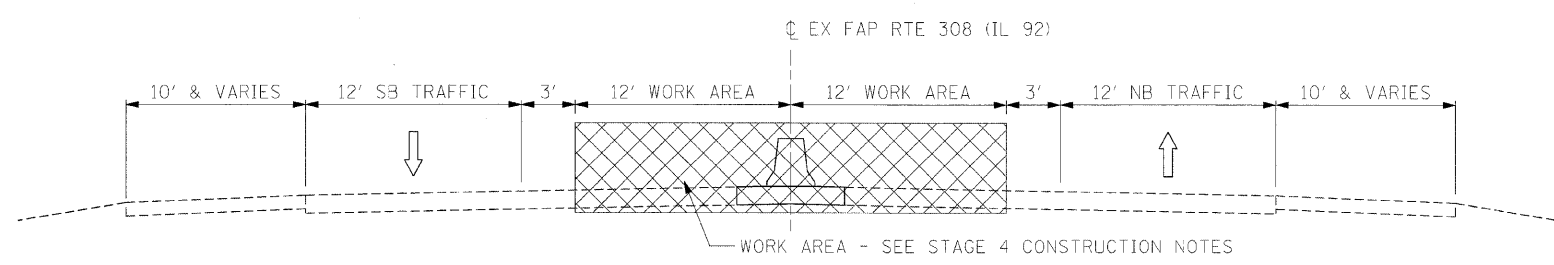
STAGE 1
LOOKING NORTH



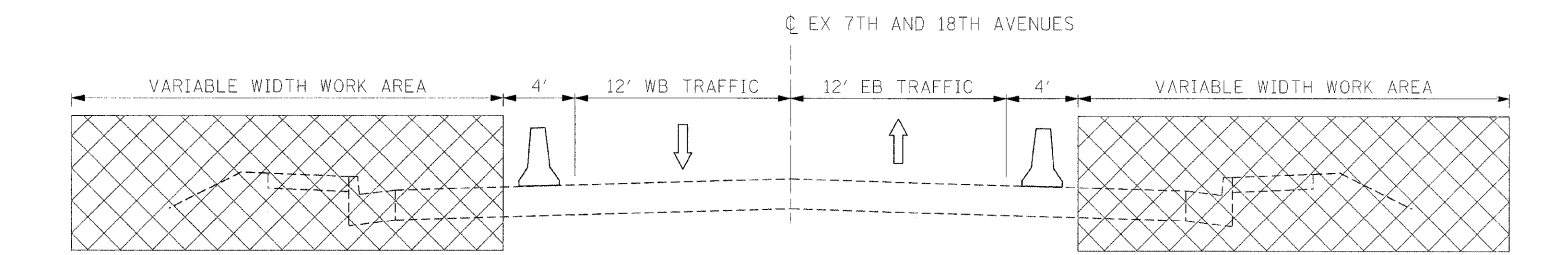
STAGE 2
LOOKING NORTH



STAGE 3
LOOKING NORTH



STAGE 4
LOOKING NORTH



7TH AVENUE AND 18TH AVENUE CONSTRUCTION
LOOKING EAST

PRE-STAGE 1

MILL AND RESURFACE NORTHBOUND LANES ON 31ST AVE, 18TH AVE, AND 7TH AVE BRIDGE DECKS ONE LANE AT A TIME USING IDOT STANDARDS 701400 AND 701401

STAGE 1

CLOSE NORTHBOUND INSIDE LANE UTILIZING IDOT STANDARDS 701400 AND 701401.
CLOSE SOUTHBOUND INSIDE LANE UTILIZING IDOT STANDARDS 701606
CONSTRUCT MEDIAN PAVEMENT AND DRAINAGE STRUCTURES.

REMOVE EXISTING RAISED CONCRETE MEDIAN AND CONSTRUCT 11" PCC PAVEMENT AT THE FOLLOWING LOCATIONS:

- STA. 1485+51.03 TO IAIS BRIDGE APPROACH
- IAIS BRIDGE APPROACH TO 18TH AVENUE BRIDGE APPROACH
- 18TH AVENUE BRIDGE APPROACH TO 7TH AVENUE BRIDGE APPROACH
- 7TH AVENUE BRIDGE APPROACH TO STA. 1561+63.55

CONSTRUCT CONCRETE BARRIER, DOUBLE FACE, 32 INCH HEIGHT AT THE FOLLOWING LOCATIONS: STA. 1491+00.00 TO STA. 1504+66.73
STA. 1509+50.85 TO STA. 1515+85.36
STA. 1519+73.29 TO STA. 1545+27.29
STA. 1549+17.98 TO STA. 1556+00.00

INSTALL 262.5 FEET OF TEMPORARY STEEL PLATE BEAM GUARDRAIL, TYPE A WITH 30:1 TAPER FROM NORTHWEST PARAPET WALL OF EX NB BRIDGE OVER 31ST AVENUE. INSTALL TEMPORARY TRAFFIC BARRIER TERMINAL, TYPE 6A TO CONNECT GUARDRAIL TO PARAPET WALL AND TEMPORARY TRAFFIC BARRIER TERMINAL, TYPE 1 (SPECIAL) AT NORTH END OF GUARDRAIL.

STAGE 2

SHIFT TRAFFIC TO NORTHBOUND LANES UTILIZING IDOT STANDARDS 701400, 701411, 701416, AND 701606.

CONSTRUCT SOUTHBOUND BRIDGE AND APPROACH OVER 31ST AVENUE AND SOUTHBOUND LANES OF BRIDGES AND APPROACHES OVER IAIS RAILROAD, 18TH AVENUE, AND 7TH AVENUE.

RESURFACE SOUTHBOUND LANES ADJACENT TO BRIDGE APPROACH SLABS AT LOCATIONS SHOWN ON THE PLAN AND PROFILE SHEETS. RECONSTRUCT SHOULDERS ALONG SOUTHBOUND LANES AT LOCATIONS SHOWN ON THE PLAN AND PROFILE SHEETS.

CONSTRUCT STEEL PLATE BEAM GUARDRAIL AND ASSOCIATED END TERMINALS ASSOCIATED WITH SOUTHBOUND LANES AT LOCATIONS SHOWN ON THE PLAN AND PROFILE SHEETS.

INSTALL 262.5 FEET OF TEMPORARY STEEL PLATE BEAM GUARDRAIL, TYPE A WITH 30:1 TAPER FROM SOUTHEAST PARAPET WALL OF PR SB BRIDGE OVER 31ST AVENUE. INSTALL TEMPORARY TRAFFIC BARRIER TERMINAL, TYPE 6A TO CONNECT GUARDRAIL TO PARAPET WALL AND TEMPORARY TRAFFIC BARRIER TERMINAL, TYPE 1 (SPECIAL) AT SOUTH END OF GUARDRAIL.

STAGE 3

SHIFT TRAFFIC TO SOUTHBOUND LANES UTILIZING IDOT STANDARDS 701400, 701411, 701416, AND 701606.

CONSTRUCT NORTHBOUND BRIDGE AND APPROACH OVER 31ST AVENUE AND NORTHBOUND LANES OF BRIDGES AND APPROACHES OVER IAIS RAILROAD, 18TH AVENUE, AND 7TH AVENUE.

RESURFACE NORTHBOUND LANES ADJACENT TO BRIDGE APPROACH SLABS AT LOCATIONS SHOWN ON THE PLAN AND PROFILE SHEETS. RECONSTRUCT SHOULDERS ALONG NORTHBOUND LANES AT LOCATIONS SHOWN ON THE PLAN AND PROFILE SHEETS.

INSTALL STEEL PLATE BEAM GUARDRAIL AND ASSOCIATED END TERMINALS ASSOCIATED WITH NORTHBOUND LANES AT LOCATIONS SHOWN ON THE PLAN AND PROFILE SHEETS.

REMOVE TEMPORARY STEEL PLATE BEAM GUARDRAIL AND ASSOCIATED TERMINALS CONSTRUCTED IN STAGE 1.

STAGE 4

CLOSE NORTHBOUND AND SOUTHBOUND INSIDE LANES UTILIZING IDOT STANDARDS 701400, 701401, AND 701606.

CONSTRUCT CONCRETE BARRIER, DOUBLE FACE, 32 INCH HEIGHT AT THE FOLLOWING LOCATIONS:

- STA. 1485+57.00 TO STA. 1491+00.00
- STA. 1504+66.73 TO IAIS BRIDGE APPROACH
- IAIS BRIDGE APPROACH TO STA. 1509+50.85
- STA. 1515+85.36 TO 18TH AVENUE BRIDGE APPROACH
- 18TH AVENUE BRIDGE APPROACH TO STA. 1519+73.29
- STA. 1545+27.29 TO 7TH AVENUE BRIDGE APPROACH
- 7TH AVENUE BRIDGE APPROACH TO STA. 1549+17.98
- STA. 1556+00.00 TO STA. 1561+63.55

INSTALL STEEL PLATE BEAM GUARDRAIL AND ASSOCIATED TERMINALS FROM STA. 1481+71.14 TO STA. 1485+51.03.

REMOVE TEMPORARY STEEL PLATE BEAM GUARDRAIL AND ASSOCIATED TERMINALS CONSTRUCTED IN STAGE 2.

7TH AVENUE AND 18TH AVENUE CONSTRUCTION

CLOSE EASTBOUND AND WESTBOUND OUTSIDE LANES UTILIZING IDOT STANDARD 701606.

REMOVE EXISTING SIDEWALK, CURB AND GUTTER, AND PAVEMENT AS NECESSARY TO REMOVE EXISTING PIER FOUNDATIONS. REMOVE EXISTING PIER FOUNDATIONS, CONSTRUCT PROPOSED PIERS, AND CONSTRUCT NEW SIDEWALK, CURB AND GUTTER, AND PAVEMENT TO REPLACE REMOVED PORTIONS.

NIGHTTIME CLOSURES AS NEEDED TO REMOVE AND SET BRIDGE BEAMS.

31ST AVENUE CONSTRUCTION

CLOSE EASTBOUND AND WESTBOUND SHOULDERS UTILIZING IDOT STANDARD 701006.

NIGHTTIME CLOSURES AS NEEDED TO REMOVE AND SET BRIDGE BEAMS.

REVISIONS	
NAME	DATE

ILLINOIS DEPARTMENT OF TRANSPORTATION

IL 92 STAGING
TYPICAL SECTIONS
AND NOTES

SCALE: N.T.S.
DATE: 12/08/06

DRAWN BY: WAJ
CHECKED BY: MGZ

PLOT DATE = 01/08/06
PLOT NAME = 010806
PLOT SCALE = 0.5000
USER NAME = USER