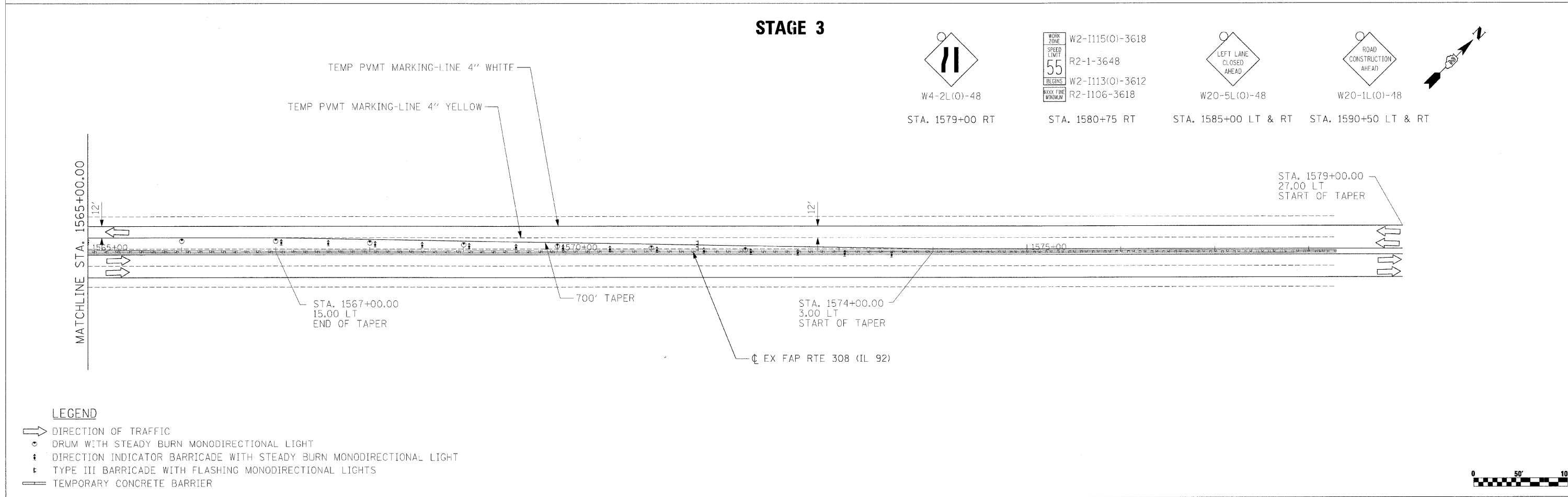
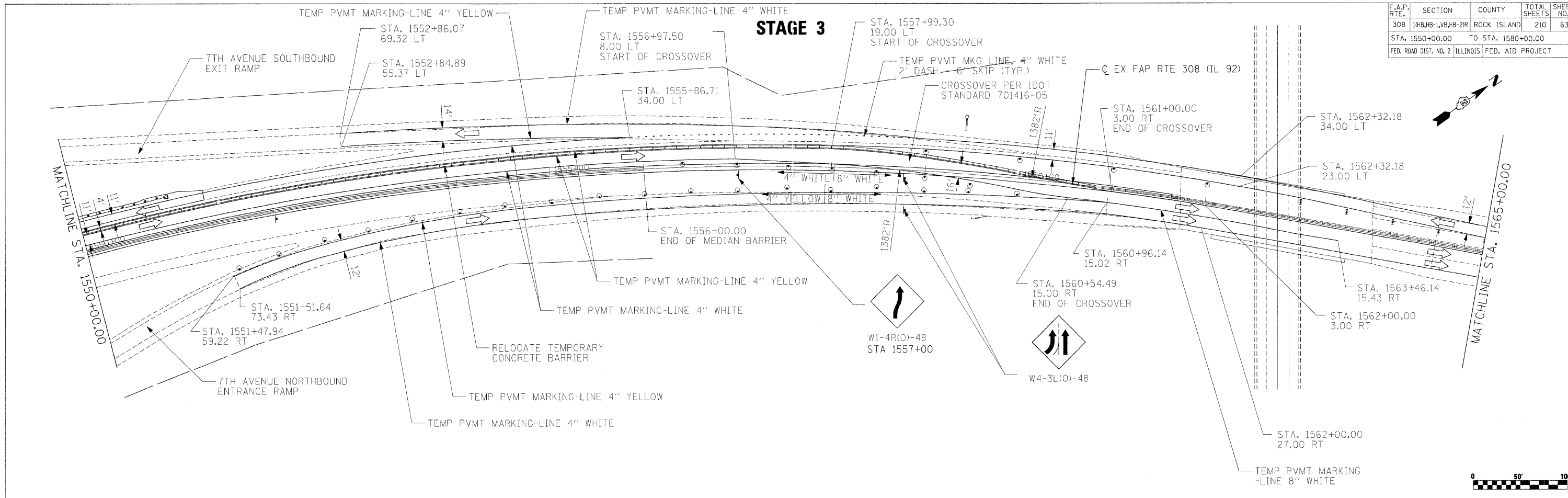


F.A.P. RTE.	SECTION	COUNTY	TOTAL SHEETS	SHEET NO.
308	10B,10B-1,10B,10B-2R	ROCK ISLAND	210	63
STA. 1550+00.00 TO STA. 1580+00.00				
FED. ROAD DIST. NO. 2 ILLINOIS FED. AID PROJECT				



**LEGEND**

- DIRECTION OF TRAFFIC
- DRUM WITH STEADY BURN MONODIRECTIONAL LIGHT
- DIRECTION INDICATOR BARRICADE WITH STEADY BURN MONODIRECTIONAL LIGHT
- TYPE III BARRICADE WITH FLASHING MONODIRECTIONAL LIGHTS
- TEMPORARY CONCRETE BARRIER

PLOT DATE = 8/24/15  
 FILE NAME = 8/15/15  
 PLOT SCALE = 1/8"=1'-0"  
 USER NAME = JG/STW